



AVK PLUNGER CONTROL VALVE, DUCTILE IRON, PN10/16

870/0001-001

SS trim/piston, bronze guides, A4/A2 bolts, Rotork gearbox/handwheel, ON-OFF, 250µm blue RAL5017 EP

AVK series 870 are designed as plunger control valves for inline applications. Unlike butterfly- or gate valves, that should only be in either fully open or fully closed position, plunger valves are designed to operate in between and perform control functions in water supply systems.

The design consists of a single-piece body made of epoxy coated ductile iron. Internal components in contact with water are made of either stainless steel or bronze; materials that guarantee a good anti-corrosion performance and a long service life.

Product description:

Plunger control valve for flow rate control and pressure reducing applications. For water and other neutral and hydrocarbon-free media to max. 70°C.

Design standards:

- Face-to-face dimension according to EN 558 Table 2 Basic Series 15
- Flange drilling to EN1092, PN10/16
- Designed according to EN 1074-1/5 & EN1349

Test/Approvals:

- Hydraulic test according to EN 1074-1 and 5/ EN12266

Features:

- One-piece body construction
- T-shape main seal located in safety flow area ensuring minimal wear and long service life
- Maintenance access is conveniently provided by the downstream retaining ring and the upstream cover being attached with screws
- Low operating torque due to pressure balance in chamber inside
- Gearbox with handwheel for ON/OFF operation
- Low head loss coefficient in fully open position due to optimized internal body shape
- Double O-ring sealed drive shaft with all other shafts and bearings protected against corrosion with O-ring combinations
- 4 guide rails ensure no vibration during operation and accurate alignment throughout full valve stroke
- Body in ductile iron with internal parts in stainless steel and bronze guide rails for high corrosion resistance
- Internally and externally corrosion protected with a coating of blue RAL 5017 fusion bonded epoxy to DIN 3476 and applied in a GSK approved process.

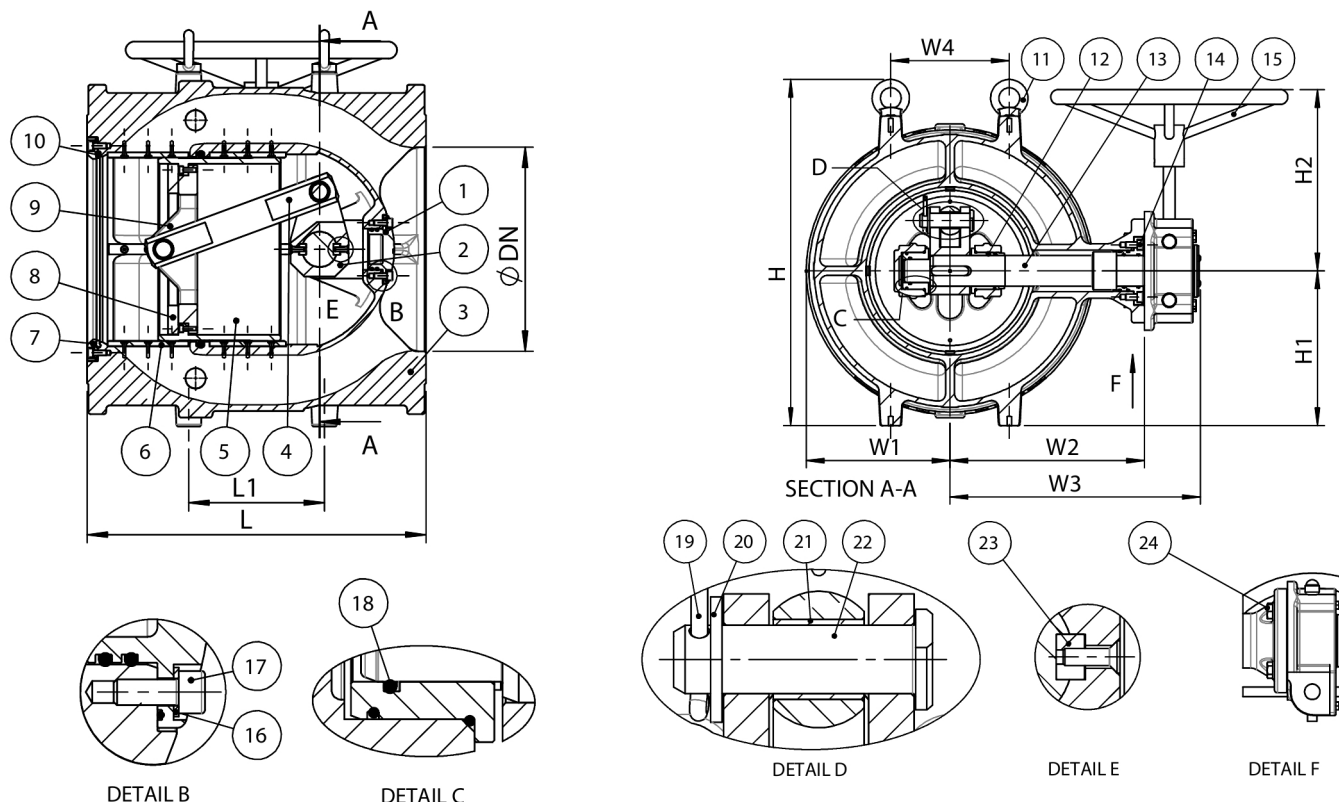


Expect ... **AVR**

AVK PLUNGER CONTROL VALVE, DUCTILE IRON, PN10/16

870/0001-001

SS trim/piston, bronze guides, A4/A2 bolts, Rotork gearbox/handwheel, ON-OFF, 250µm blue RAL5017 EP



Component list:

1. Upstream cover	Stainless steel, cast	13. Shaft, drive	Stainless steel 1.4021
2. Crank	Stainless steel 1.4308 (CF8), cast	14. Seal housing	Bronze CC499K
3. Body	Ductile iron GJS-500-7 (GGG-50)	15. Gearbox	Ductile Iron
4. Push rod	Stainless steel	16. Washer	Bronze CC499K
5. Piston	Stainless steel	17. Bolt	Stainless steel A4
6. Guide rail	Bronze CC499K	18. O-ring	EPDM rubber
7. Retainer ring	Stainless steel	19. Split pin	Stainless steel A4
8. Lock ring	Stainless steel	20. Washer	Stainless steel A4
9. Piston flange	Stainless steel 1.4308 (CF8), cast	21. Bush	Bronze CC499K
10. Main seal	EPDM rubber	22. Clevis pin	Stainless steel A4
11. Lifting eye	Stainless steel A4	23. Key	Stainless steel A4
12. Bush	Bronze CC499K	24. Bolt	Stainless steel A2

Components may be substituted with equivalent or higher class materials without prior notification.

Reference nos. and dimensions:

AVK ref. no.	DN	Flange	L	L1	H	H1	H2	W1	W2	W3	W4	Theoretical weight/kg
	mm	drilling	mm	mm	mm	mm	mm	mm	mm	mm	mm	
870-0200-00-046401	200	PN10	400	140	433	190	270	180	225	328	140	95
870-0200-00-146401	200	PN16	400	140	433	190	270	180	225	328	140	95
870-0250-00-046401	250	PN10	450	230	503	225	270	213	300	413	230	157
870-0250-00-146401	250	PN16	450	230	503	225	270	213	300	413	230	157
870-0300-00-046401	300	PN10	500	200	584	261	306	243	328	435	200	198
870-0300-00-146401	300	PN16	500	200	584	261	306	243	328	435	200	198
870-0350-00-046401	350	PN10	550	200	664	301	306	278	370	462	240	257
870-0350-00-146401	350	PN16	550	200	664	301	306	278	370	462	240	257
870-0400-00-046401	400	PN10	600	240	755	342	356	323	430	530	300	380
870-0400-00-146401	400	PN16	600	240	755	342	356	323	430	530	300	380
870-0450-00-046401	450	PN10	650	340	811	370	356	349	460	560	340	508
870-0450-00-146401	450	PN16	650	340	811	370	356	349	460	560	340	508

The designs, materials and specifications shown are subject to change without notice due to the continuous development of our product range.

AVK PLUNGER CONTROL VALVE, DUCTILE IRON, PN10/16**870/0001-001****SS trim/piston, bronze guides, A4/A2 bolts, Rotork gearbox/handwheel, ON-OFF, 250µm blue RAL5017 EP****Reference nos. and dimensions:**

AVK ref. no.	DN	Flange	L	L1	H	H1	H2	W1	W2	W3	W4	Theoretical weight/kg
	mm	drilling	mm	mm	mm	mm	mm	mm	mm	mm	mm	
870-0500-00-046401	500	PN10	700	340	884	397	356	379	490	620	340	598
870-0500-00-146401	500	PN16	700	340	884	397	356	379	490	620	340	598
870-0600-00-046401	600	PN10	800	400	1050	480	356	441	560	690	500	953
870-0600-00-146401	600	PN16	800	400	1050	480	356	441	560	690	500	953

