

ABOUT.

1

observation 觀察

開始觀察日常生活，尋找自己跟空間的關聯。

在城市中生活，對都市沒有喜歡、也沒有討厭，只是習慣了都會生活。一直以來，都市生活的節奏很快，平時不太在意周遭發生的事物，也不太有機會思考他們對我帶來的意義。

Initially, reviewing my daily life, I was wondering about the connection between the space and myself.

Personally speaking, as a person who lives in cities for my whole life, I cannot tell if I prefer or dislike the lives in cities. I just use to this way of living. Because living in busy cities, I seldom look into things that happen around me and think about the meaning of them.

整體作品雖以抽象幾何開始發想設計，再加入生活機能考量，融入生活卻又讓人暫時脫離現實，這系列的作品從玄關到臥室，牽繫了家中的動線與空間的連結。

The works mainly focus on the arrangement of geometric elements and colors, and the function of them designed by considering the needs of using places.

Three works in the series set in entrance, living room and bedroom.

2

research 研究

拍下很多生活、街景、任何我所看到的畫面，思考分析城市的形狀、顏色、節奏。

將生活中看得見及看不見的情報可視化。

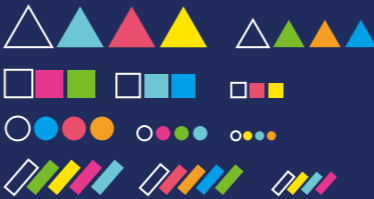
In this light, I start to observe and take pictures of my daily life, thinking of the shapes, colors, rhythm of this real world.

Eventually, I visualize all of the emotion and observation in my daily life.

3

intelligence 收集分類

依照形狀、顏色及大小整理並分類。Then, according to the shapes, colors and volume, I sort out every information that collected.



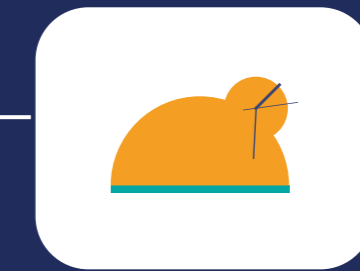
4

rearrangement 重新排列

將整理好的資料變形重新排列組合。

In this way, I can create different graphic, transforms and combinations based on my research.

5



creation 創造

planet formula 就跟小行星帶一樣，一個一個獨立的幾何元素，時而平行時而交錯，我們的生活也是，都市也是、家也是，各自存在彼此相互聯繫著。這系列中主要以幾何形狀與色彩組合，加上依據設置場域的機能性所設計而成，一共有三件作品，分別設置於玄關、客廳及房間。

They seem to connect together, but they also individually exist. Planet Formula is an asteroid belt, which combining with individual geometric elements, but connecting together. Our life, home, and a city which sometimes work parallel or cross-linked are following the same formula.

