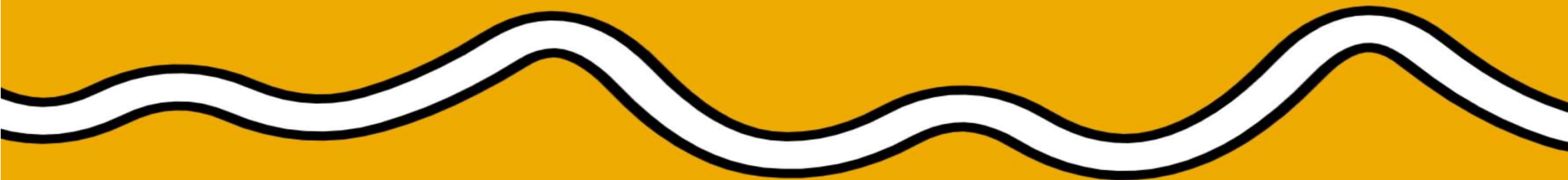


Future State of SAP Development

#SITBNE 12/07/2024



Sponsors

Shout out to Alex Bauer & Team



1st Ticket Holder

Satyaveer Krovvidi

Agenda

- **Talk a bunch of stuff**
- **Eat some pizza 6.15**
- **Talk a bunch more stuff**
- **8.00 Wrap Up & Head to the Pub**

House Rules

- **Be open**
- **Ask for clarification**
- **Give people a chance to talk (we'll help that happen)**
- **Be courteous and listen**
- **Have fun**

Join us on Mentimeter....

General

Questions	Topic Area
What are other companies doing to start their journey to BTP & clean core?	
What kind of changes have organisations made to help better support moving to cloud to benefit from cloud capabilities?	
Who is a BTP Developer? How it is different from a Full stack SAP Developer?	

Architecture

Questions	Topic Area
What are BTP credits and how long do they last for?	BTP
Where can I find reference architectures for common use cases and where have these been applied?	BTP
Which one should learn Kyma or cloud foundry ?	BTP
Differences in functionality between public and private cloud, e.g. for extensibility	General

Reporting

Questions	Topic Area
To know more about review booklet designer, cds views, KPIs and reports	

Development

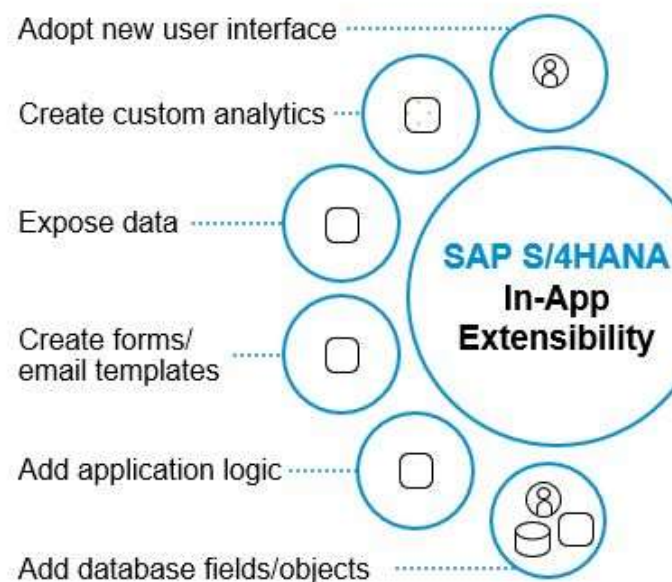
Questions	Topic Area
To know more about RAP and BAS in 3SL public cloud	ABAP
How to write BaDIs in custom logic?	ABAP
Classic Badis vs key user extensibility	ABAP
Most of the ECC systems and already migrated S/4 systems are heavily customized? Is clean core possible?	ABAP
Deep dive into custom business objects and search helps	General
What are the best places to find resources to help me learn SAP Cloud technologies?	General
Is there support available for free/low cost hands on learning?	General
SAP has moved to faster innovation cycle. Learning under the hood is not possible as it consumes a lot of time. What should be a developer's learning strategy?	General

Development

Questions	Topic Area
Should I stop working on ABAP and complete move towards BTP platform and become a BTP developer?	General
I am tired of learning continuously for the past 4 years as the adaptation from the customer is slow. I can't implement what I have learned. How do I keep myself motivated and have a hands on with the latest frameworks and tech.	General
What are the open source technologies I should learn ?	General
Is low code no code the future of development?	General
Should I start using Type Script in my UI5/ Fiori Developments?	Javascript
What is UI5 Web Components? Where does it fit in and its usage	UI5
Maturity of key user extensibility framework and roadmap	

SAP S/4HANA Extensibility Model

In-App Extensions

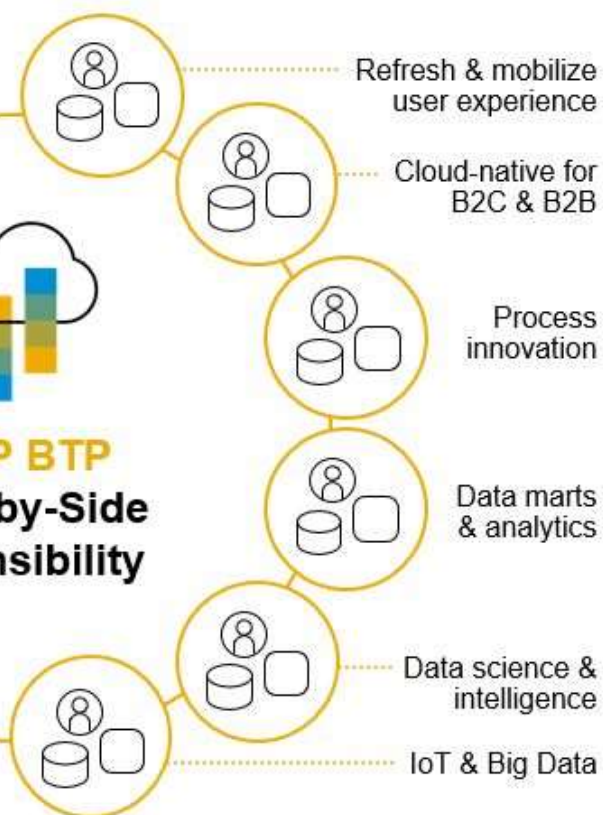


Integration



Cloud Extensions

SAP BTP Side-by-Side Extensibility



SAP Development Tech Radar

<https://tobiashofmann.github.io/sap-dev-tech-radar/>

SAP Development Tech Radar

2024.06

UI

ADOPT

1. FPM
2. WD15
3. Web Components

USE

4. Fiori Launchpad
5. Fiori UX
6. MDK
7. Personas
8. UI Flexibility

HOLD

9. Mobile Cards
10. SAP BTP SDK for Android
11. SAP BTP SDK for iOS
12. UI5 freestyle
13. WDA

STOP

14. BSP
15. CRM-WebClient-UI
16. Dynpro
17. J2EE
18. WDJ

Frameworks

ADOPT

32. ABAP Cloud
33. RAP managed draft

USE

34. ABAP Unit
35. BRF+
36. CAP JS
37. Clean ABAP
38. Custom Fields & Logic
39. Fiori Elements
40. OpenUI5
41. RAP managed
42. RAP unmanaged
43. SAPUI5

HOLD

44. BOPF Fiori
45. CAP Java

STOP

46. BOPF
47. Reports

Technology

ADOPT

19. BTP
20. OData v4
21. Workzone

USE

22. CDS View Entity
23. FES embedded
24. OData v2

HOLD

25. CDS Views
26. SOAP

STOP

27. FES hub
28. Neo
29. Portal
30. XSA
31. XSC

Tools

ADOPT

48. Cloud ALM
49. gCTS
50. UI5 linter

USE

51. ABAP Cleaner
52. abapGit
53. ADT
54. ATC
55. BAS
56. eCATT
57. UI5 tooling
58. VS Code

HOLD

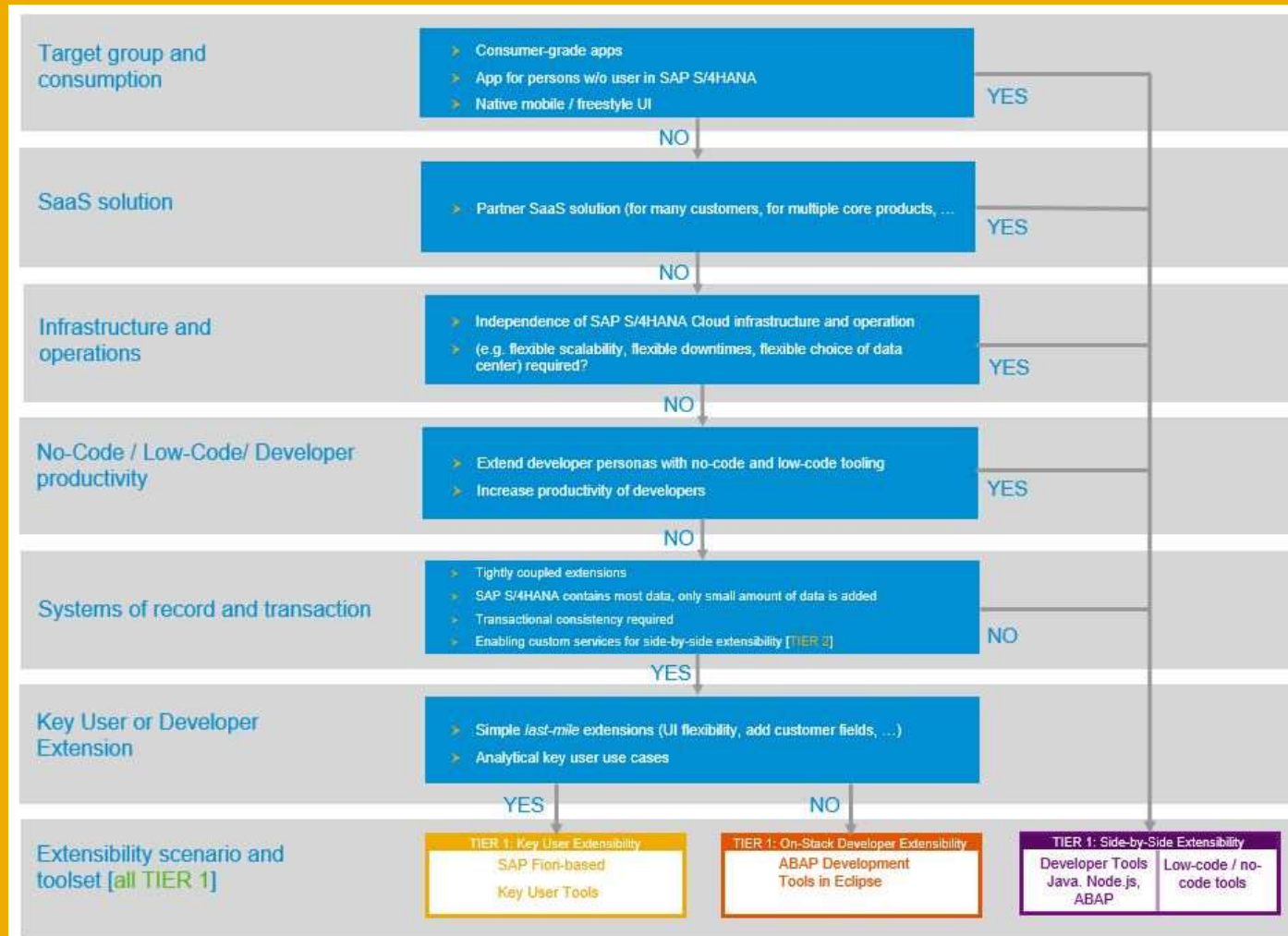
59. SolMan

STOP

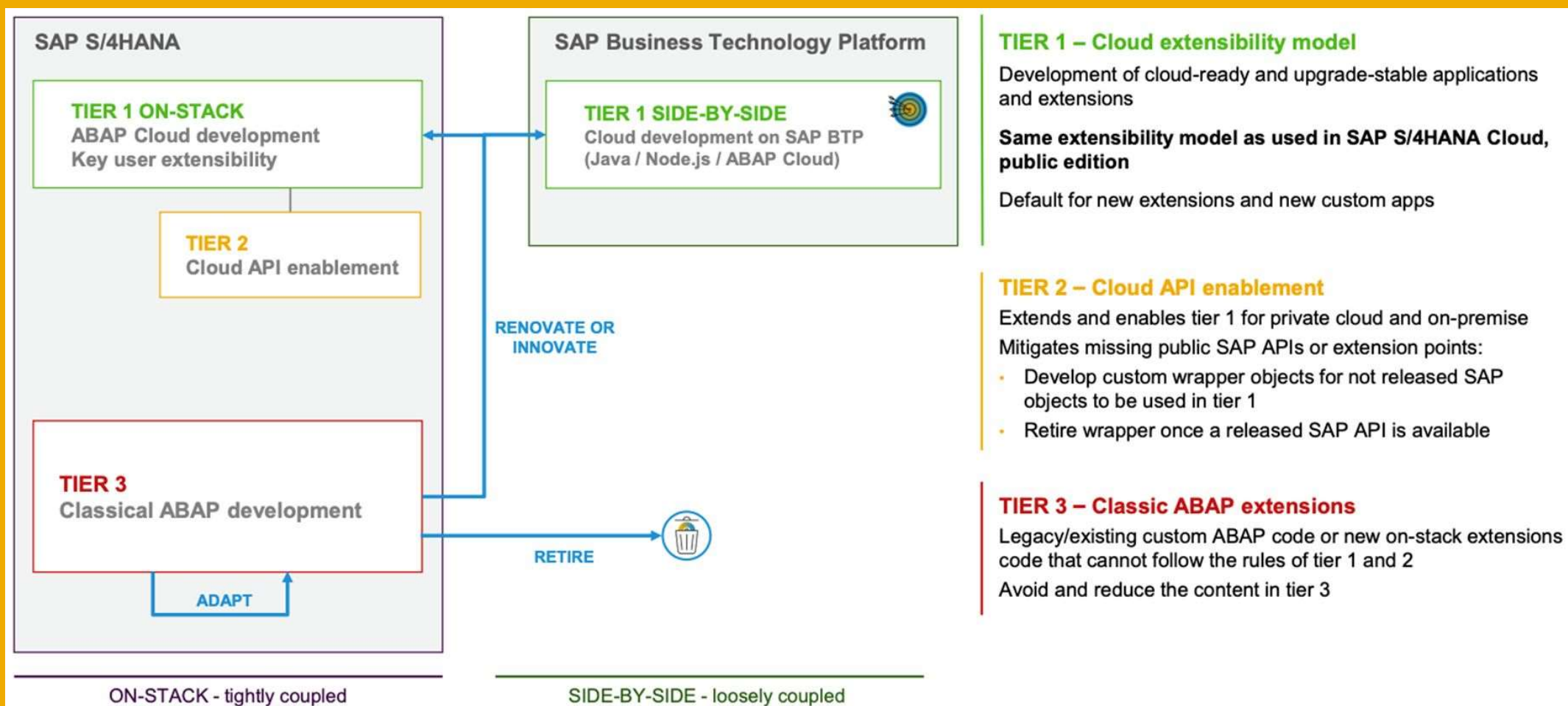
60. Kapsel
61. SAP GUI
62. SE80
63. SEGW
64. WebIDE



The Right Extensibility Option



3 Tier Extensibility Model: Private Cloud



SAP BTP Runtime Choice

	ABAP	Cloud Foundry	Kyma
RAP	X		
CAP		X	X
Microservices		X	X
Very “particular” programming language	(ABAP)	any	any
Simplicity vs. empowerment	S	S	E



Tooling: BAS vs VS Code

The image compares two development environments: SAP Business Application Studio (BAS) and Visual Studio Code (VS Code).

SAP Business Application Studio (BAS): The interface shows the "Create a New Dev Space" wizard. The "Demo_Fiori" space is selected. The "What kind of application do you want to create?" section lists options: Basic, SAP Fiori, SAP Cloud Business Application, and SAP Cloud Platform Mobile Services. The "SAP Fiori Dev Space" section describes the environment and lists predefined extensions (Basic Tools, Fiori Freestyle Tools, MTA Tools, Basic SAP version of Theia IDE, SAP Fiori tools) and additional extensions (SAPUI5 Adaptation Pack, Launchpad Module, Development Tools for SAP Fiori, Workflow Management, Extension Factory Service).

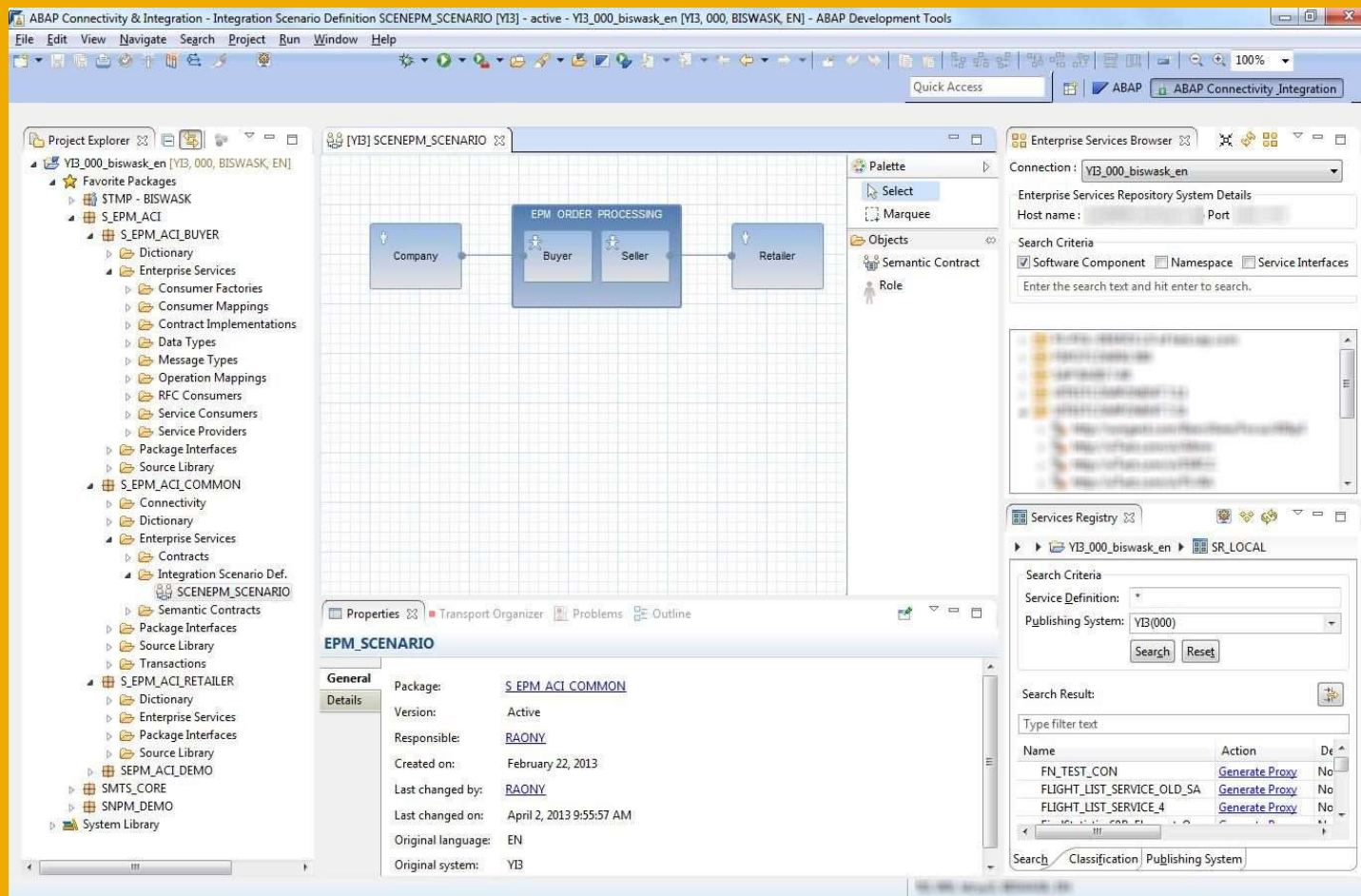
Visual Studio Code (VS Code): The interface shows the "EXPLORER" view with the "CREATE-REACT-APP" project structure. The "src" folder contains files: App.css, App.js, App.test.js, index.css, index.js, logo.svg, serviceWorker.js, .gitignore, package-lock.json, package.json, README.md, and yarn.lock. The "serviceWorker.js" file is open in the editor, showing the following code:

```
src > JS serviceWorker.js
28 // OUR SERVICE WORKER WON'T WORK IF PUBLIC_URL IS ON A DIFFERENT ORIGIN
29 // from what our page is served on. This might happen if a CDN is used
30 // serve assets; see https://github.com/facebook/create-react-app/issues/1032
31 return;
32
33
34 window.addEventListener('load', () => {
35   const addEventListener = (method) => {
36     alert
37     if (isApplicationCache
38       // T
39       check
40       AbortController
41       // A
42       AbortSignal
43       // S
44       AbstractRange
45       navi
46       co
47       AnalyseNode
48       Animation
49       AnimationEffect
50   });
51   // Is not localhost. Just register service worker
52   registerValidSW(swUrl, config);
53 }
```

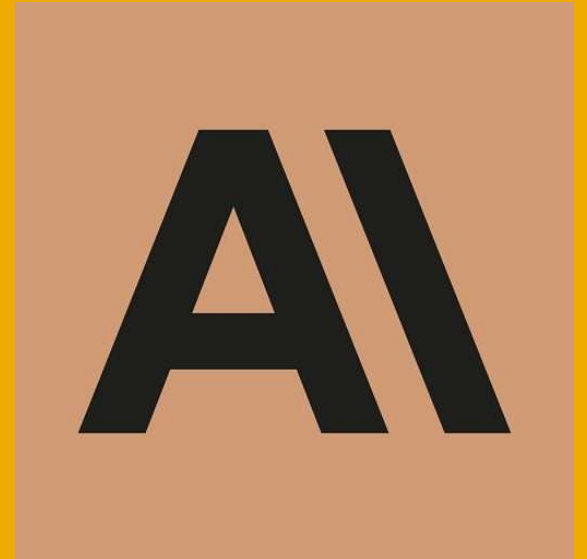
The "TERMINAL" view shows the output of the command:

```
Compiled successfully!
You can now view create-react-app in the browser.
Local: http://localhost:3000/
On Your Network: http://192.168.86.138:3000/
Note that the development build is not optimized.
To create a production build, use yarn build.
```

Tooling: Eclipse???



AI for Tooling:



SAP Learning Resources

Resource	Detail	URL
SAP Learning	Learning Journeys	https://learning.sap.com/
SAP BTP Trial	Trial most BTP Services (Free)	https://account.hanatrial.ondemand.com/
SAP Discovery Center	Missions, Reference Architectures	https://discovery-center.cloud.sap/
SAP BTP Developers Guide		https://help.sap.com/docs/btp/btp-developers-guide/what-is-btp-developers-guide
SAP Help		https://help.sap.com/docs/
CAP Help		https://cap.cloud.sap/docs/
SAP Samples Github		https://github.com/SAP-samples/
SAP Press	Subscriptions	https://www.sap-press.com/

Other Learning Resources

Resource	Detail	URL
Cloud Design Patterns (Azure)		https://learn.microsoft.com/en-us/azure/architecture/patterns/

Time to Wrap Up 8.00

Thanks for dropping by

Join us at the pub for the after party