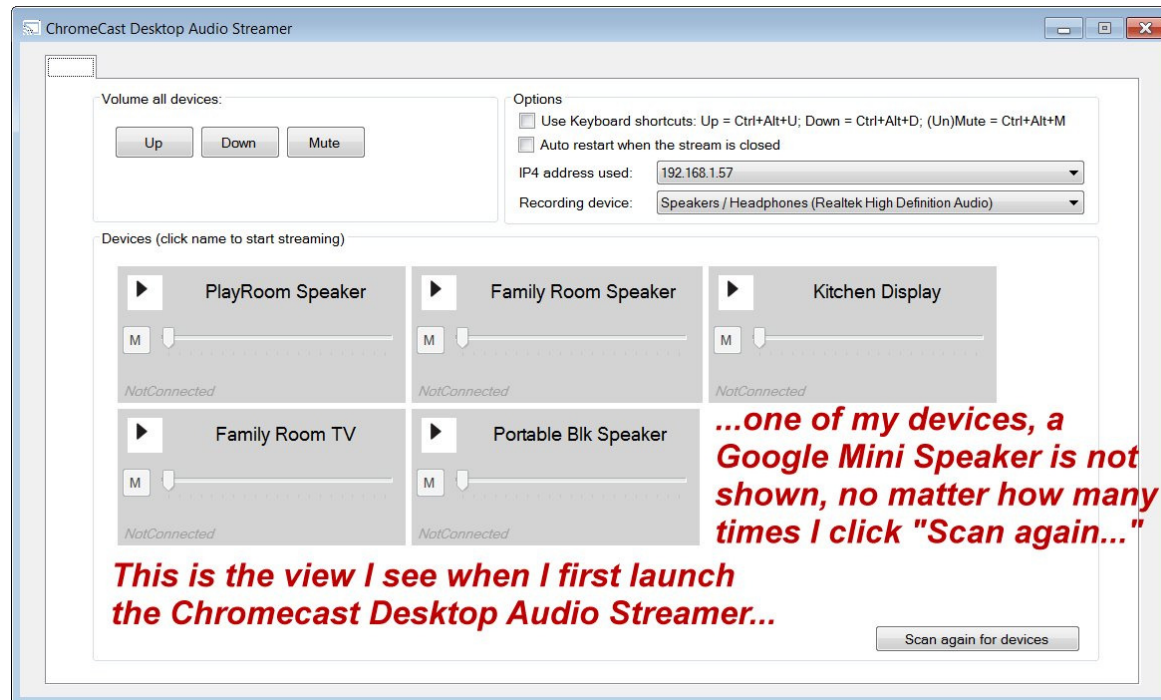


Some interesting observations after using the ChromeCast Desktop Audio Streamer for a few days...

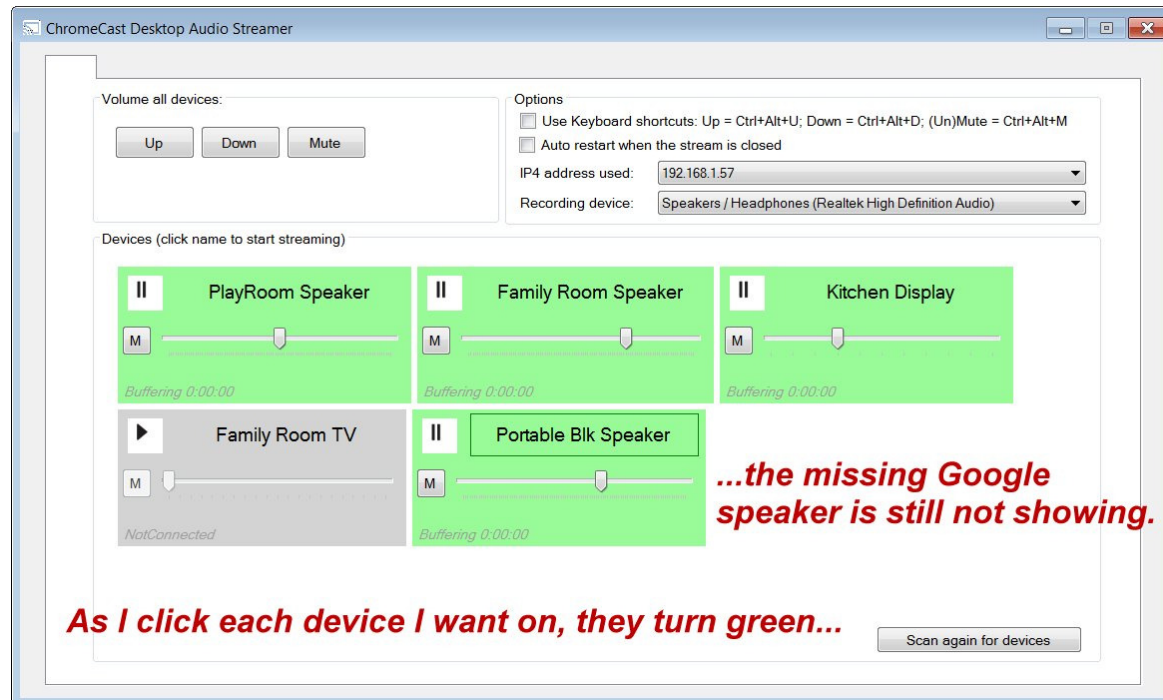
This first screen shot is the App when it is first launched...

It finds some, but not all, Google Devices. Clicking the "Scan again for devices" button does not reveal any more. The display is concise, with the Device Boxes arranged in a small grid.



continues on next page

This second screen shot shows the Device List just after I have selected some devices to stream to (an iTunes Playlist is playing). The volume controls enabled me to adjust the volume of each device, and some of the speakers have their own local volume control. I tried the “Scan again...” button, but the missing device is still not found. The display is concise, with the Device Boxes arranged in a small grid, enabling me easy access to adjust volumes or pause devices from a central location.



continues on next page

After about an hour of continuous play, the Device boxes have re-aligned, and have widened. A vertical scrollbar appears on the right to enable scrolling to view each Device control box. I suppose this new arrangement enables setting volumes to similar levels (by aligning the volume cursors), assuming all speakers are of equal power... (I stitched a few screen shots together, vertically, to show this as one image)

**After about an hour, the device boxes have rearranged, and are larger...**

Volume all devices: [Up] [Down] [Mute]

Options  
 Use Keyboard shortcuts: Up = Ctrl+Alt+U; Down = Ctrl+Alt+D; (Un)Mute = Ctrl+Alt+M  
 Auto restart when the stream is closed  
IP4 address used: 192.168.1.57  
Recording device: Speakers / Headphones (Realtek High Definition Audio)

Devices (click name to start streaming)

- PlayRoom Speaker (Playing 0:58:18)
- Family Room Speaker (Playing 0:58:18)
- Kitchen Display (Playing 0:58:28)
- Family Room TV (NotConnected)
- Portable Blk Speaker (Playing 0:58:28)

**The missing Google Speaker is still absent.**

**I stitched multiple screen shots together to show how the device list expanded.**

Scan again for devices

I tried the “Scan again...” button, but the missing Google Speaker was not found...

continues on next page

A few hours later, the Device Boxes have widened even more, causing a horizontal scrollbar to appear. (I stitched multiple screen shots again (both, horizontally & vertically) to show all of this as one image.)

The screenshot shows the ChromeCast Desktop Audio Streamer interface. At the top, there are volume controls for all devices (Up, Down, Mute) and options for keyboard shortcuts and auto-restart. Below this, the IP4 address is 192.168.1.57 and the recording device is Speakers / Headphones (Realtek High Definition Audio). The main area displays a list of devices, each with a play/pause button, a mute button, and a volume slider. The devices are: PlayRoom Speaker, Family Room Speaker, Kitchen Display, Family Room TV, Portable Blk Speaker, and Office Speaker. The PlayRoom Speaker, Family Room Speaker, Kitchen Display, and Portable Blk Speaker are all active (green background) and their volume sliders are wide. The Family Room TV and Office Speaker are inactive (grey background) and their volume sliders are small. A horizontal scrollbar is visible at the bottom of the device list. A 'Scan again for devices' button is at the bottom right.

*After a few hours, the device boxes grew wider and varied in width...*

*They out-grew the window, and a horizontal scrollbar appeared*

*...the inactive devices remained small...*

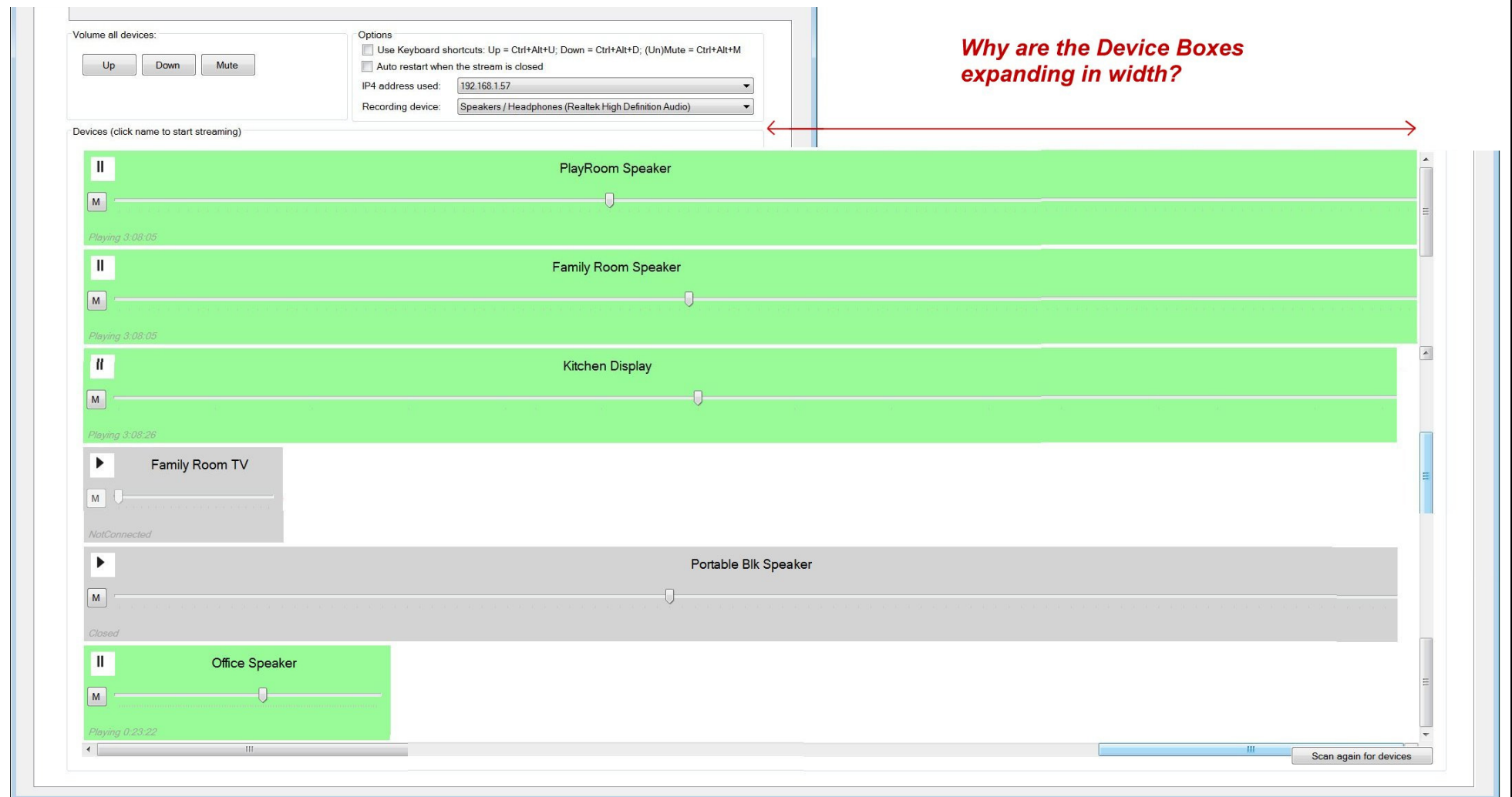
*...and the missing Google Speaker has appeared (without clicking "Scan again..."*

...and the missing Google Speaker appeared, even though I last clicked the "Scan again..." button about 2 hours ago.

continues on next page

I enabled the "Office Speaker", and turned off the "Portable Blk Speaker"...

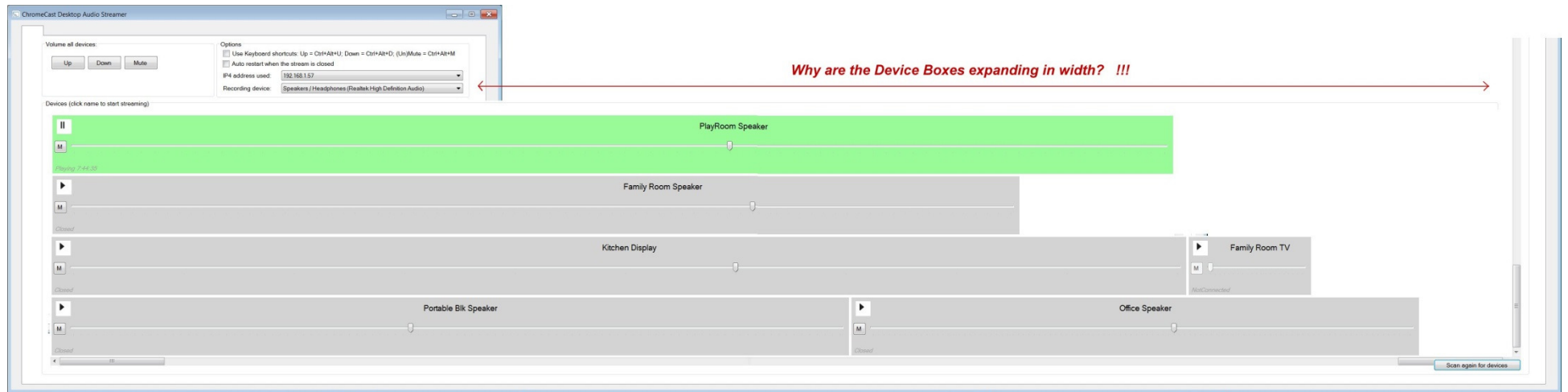
The width of the Device Boxes continues to expand!!!



I'm not sure what purpose that serves, but in my opinion, I don't see a need for the Device Boxes to be wider than the Application Window; in fact it makes it more difficult to manage the volume controls...

continues on next page...

A few hours later, the Device Boxes expanded even more... Too wide to display at this same scale; so this image is reduced to about half of above previous scale:



I would certainly prefer the Device Boxes to be limited in width to the width of the Application Window, and stacked to scroll vertically as needed.

Also noted: At least two Device Boxes changed to gray, indicating they were off line, but audio continued to play from both of those speakers... This was over a span of about 9 hours; perhaps there are some memory issues? Task Manager showed ChromeCast.Desktop.AudioStreamer.exe to be using about 39,000k at this time.

After shutting the system down & restarting it, casting to 6 speakers, the Device Box window was again in the 'concise' layout, and Task Manager showed ChromeCast.Desktop.AudioStreamer.exe to be using about 29,000k.

However, the longer this App runs, the WIDER the Device Boxes get... I am guessing this is not the intended result, but some anomaly... I do not see any benefit for the device Boxes to exceed the App Window width.

Bottom line: I LOVE what this App does, and I hope this feedback can help improve it!!!

PS: This was on a PC running 64-Bit Windows 7 Pro; Intel Core i7-4900MQ CPU @ 2.80 GHz; 16 GB RAM