

2.4.6 Credentials Issuance Use Case

This use case describes an example of interaction between the different OSIA components to capture identity data, generate a UIN, process the identity data and issue both a physical and digital credential.

This use case also demonstrates what a middleware could do when connected to multiple OSIA compatible systems. In this example the middleware is acting as an enrollment server, scheduling all the processing when the data collection is finalized.

This use case was implemented for demonstrating OSIA and is presented in this [video](#).

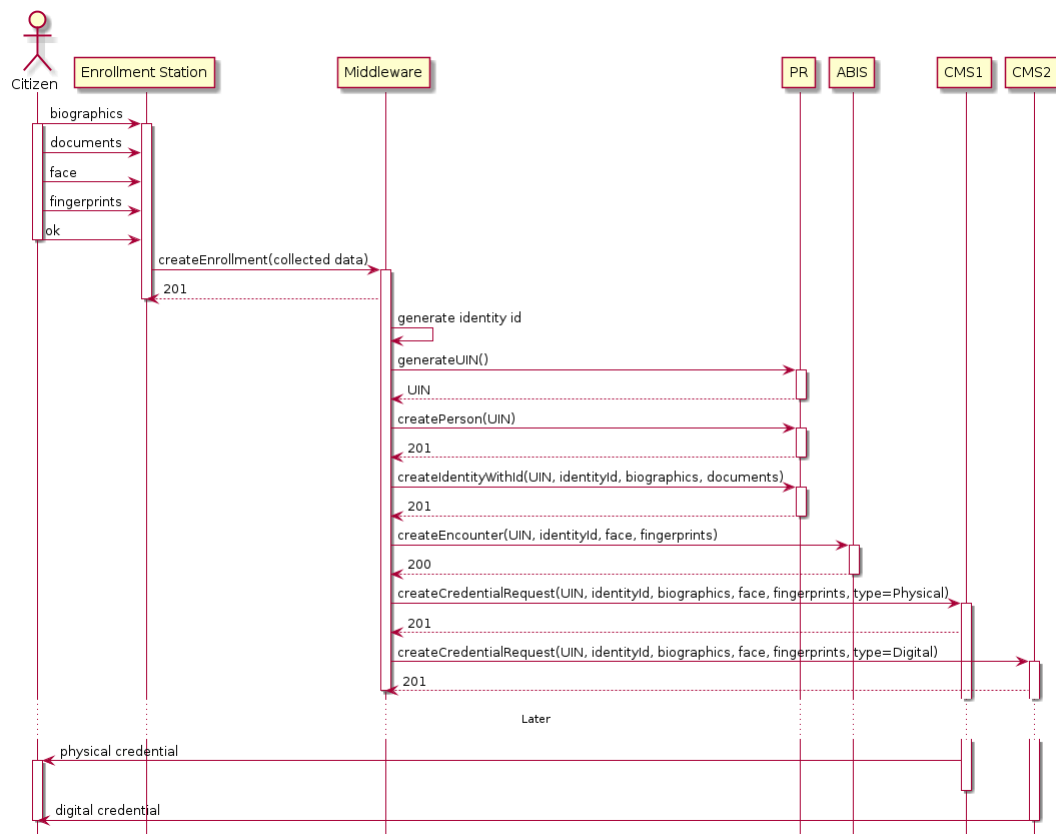


Fig. 2.7: Credentials Issuance Use Case

The main steps are:

1. The citizen interacts with the enrollment station to provide the biographic data, the supporting document images, a portrait and a set of fingerprints.
2. When all the data is collected, the full data set is pushed to the middleware using the OSIA `createEnrollment` service.
3. Backend processing includes:
 - interactions with the population registry to generate a UIN and insert the collected data,
 - interaction with the ABIS to insert the face and fingerprints,
 - interactions with multiple Credential Management System to request the issuance of different types of credentials.