

Welcome to the Invisible Internet

The Invisible Internet is a privacy by design, people-powered network. It is a truly free and anonymizing Internet alternative. Get I2P.

[Get Started](#)

What is I2P?

The Invisible Internet Project (I2P) is a fully encrypted private network layer. It protects your activity and location. Every day people use the network to connect with people without worry of being tracked or their data being collected. In some cases people rely on the network when they need to be discrete or are doing sensitive work.

I2P Cares About Privacy

I2P hides the server from the user and the user from the server. All I2P traffic is internal to the I2P network. Traffic inside I2P does not interact with the Internet directly. It is a layer on top of the Internet. It uses encrypted unidirectional tunnels between you and your peers. No one can see where traffic is coming from, where it is going, or what the contents are. Additionally I2P offers resistance to pattern recognition and blocking by censors. Because the network relies on peers to route traffic, location blocking is also reduced.

Peer-to-Peer

The network is people powered . Peers make a portion of their resources, particularly bandwidth, available to other network participants. This allows the network to function with relying on centralized servers. [Learn more about the Protocol Stack.](#)

Privacy and Security By Design

I2P has created transport protocols that resist DPI censorship, and continuously improves its end to end encryption. [Read the I2P Transport Overview.](#)

Built For Communication

I2P has an application layer with easy to use APIs for creating your own privacy - aware apps.

News & Updates



2021-05-17 - 0.9.50 Release

2021-02-17 - 0.9.49 Release

2020-12-10 - Hello Git, Goodbye Monotone

2020-11-30 - 0.9.48 Release

2020-08-24 - 0.9.47 Release

2020-06-07 - Help your Friends Join I2P by Sharing Reseed Bundles

2020-05-25 - 0.9.46 Release

2020-03-18 - Using a git bundle to fetch the I2P source code

[More blog posts...](#)

Text in the call-to-action button is changed. Leads to Getting Started page.

Step 1: Download

- Windows
- Mac OS X
- GNU / Linux / BSD / Solaris
- Debian / Ubuntu
- Android
- Source Package
- Automatic Updates
- Manual Updates

Java download is prominent as the first step for Windows, Mac, Linux



I2P for Windows

Latest version: [0.9.50.jar](#)



Download [Java](#) to run I2P

Download I2P

select alternate mirror sig

[What is this?](#)

SHA256:

34902d2a7e678fda9261d489ab31566

[What is this?](#)



I2P for Mac OS X

Latest version: [0.9.50.jar](#)



Download [Java](#) to run I2P

Download I2P

select alternate mirror sig

[What is this?](#)

SHA256:

34902d2a7e678fda9261d489ab31566

[What is this?](#)



I2P for Linux

Latest version: [0.9.50.jar](#)



Download [Java](#) to run I2P

Download I2P

Step 1: Download

- Windows
- Mac OS X
- GNU / Linux / BSD / Solaris
- Debian / Ubuntu
- Android
- Source Package
- Automatic Updates
- Manual Updates

[select alternate mirror sig](#)

[What is this?](#)

SHA256:

34902d2a7e678fda9261d489ab31566

[What is this?](#)



I2P for Android

Latest version: 0.9.50.jar

[Google Play](#)

Requires Android 4.0 (Ice Cream Sandwich) or higher. If you earlier installed I2P, unfortunately this release fixes some IPC issues which will force you to uninstall your current installation before installing this.

[Outside I2P](#)

[Google Play](#)

[F-Droid](#)

[select alternate mirror sig](#)

[What is this?](#)

SHA256:

34902d2a7e678fda9261d489ab31566

[What is this?](#)

Your download will begin shortly. If it doesn't start within 5 seconds, click [here](#).

When your download is complete, choose the instructions for your operating system and follow the steps in the Installation Instructions. You will also configure your browser and take additional steps in the [Configuration](#) page after you have completed the installation.

Choose the installation instructions for your operating system:

Mac OS
Instructions

Linux
Instructions

Docker
Instructions

Windows
Instructions

Android
Instructions

Debian and Ubuntu
Instructions

This page needs be re-worked.
Thinking through it...

Mac, Windows, and Linux

Java is required the run I2P. Download it [here](#).
Directions for [terminal and command line \(headless\)](#) install.

Android

Android comes with a Java virtual machine as part of the platform, which I2P for Android uses. Therefore it is not necessary to install Java to use I2P for Android

Debian and Ubuntu

On Debian and Ubuntu when using a .deb package to install, the system will automatically install and configure a Java environment for you.

Updates

- [Release Notes](#)
- [Change Log](#)
- [Debian Change Log](#)
- [Android Change Log](#)

Added release notes section
here

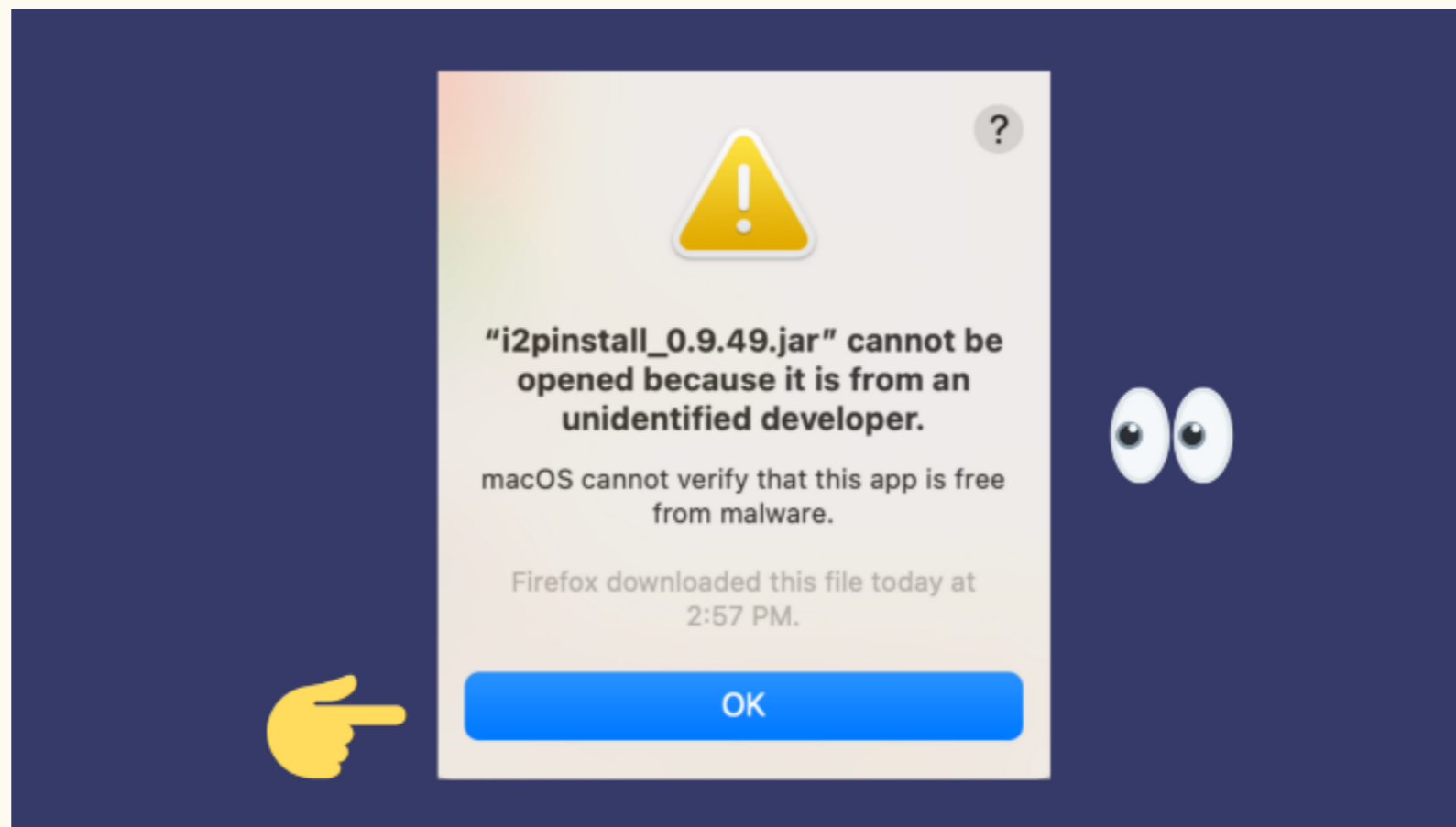
Step 2: Installation

- I2P Installation
- Launching I2P
- Wizard Walk-through

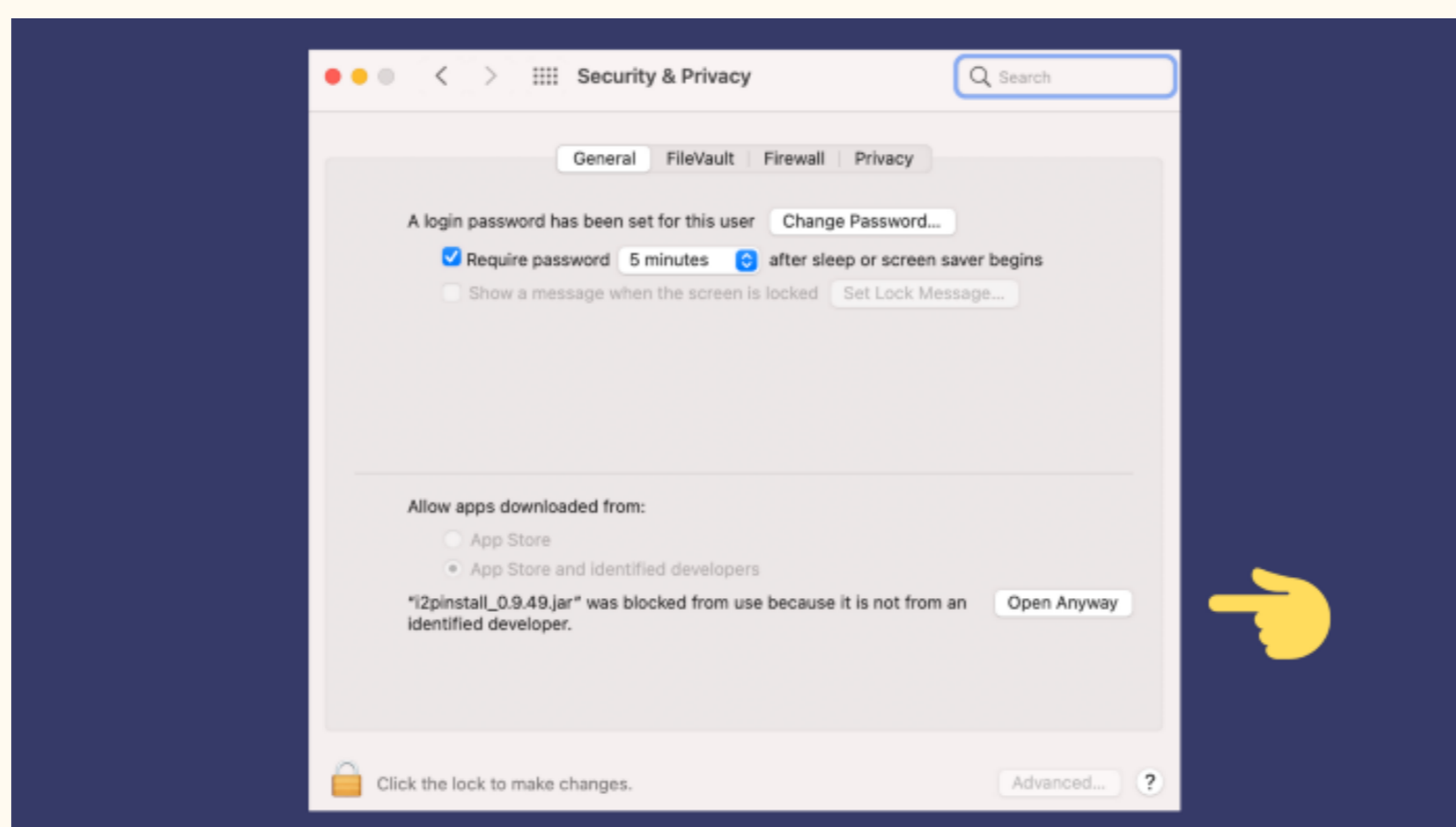
Installation Instructions for Mac OS

I2P Installation

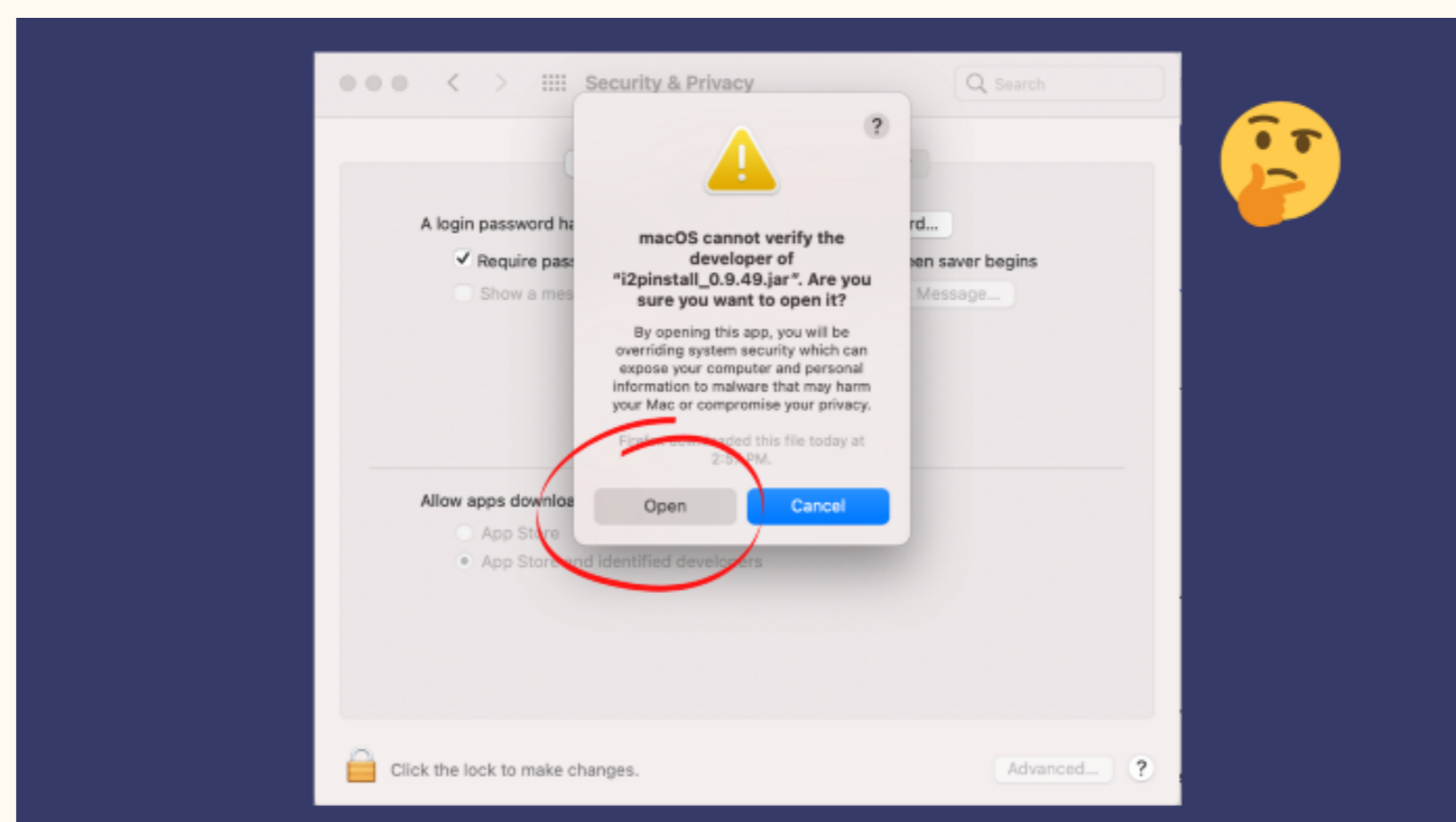
- 1 Download and install [Java](#) if you have not already. Step by step installation instructions for Java can be found [here](#).
- 2 Since the I2P software is not from the app store, Apple lets us know that. The message warns us that the developer is not known, but we can go ahead and click okay. The I2P software is open source, and we can see who maintains it and active development. Once we get comfortable, we might even want to help them out!



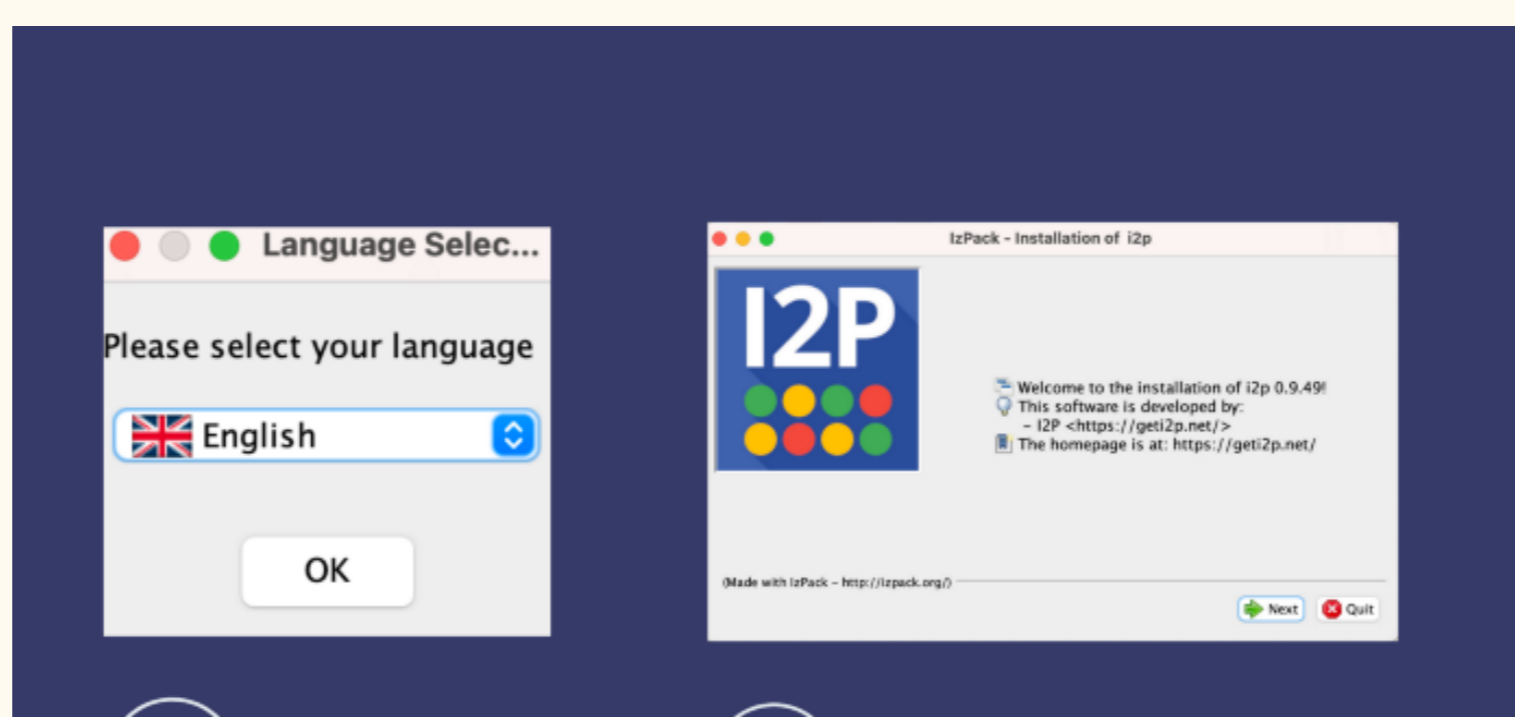
- 3 To install the software on our computer, we need to confirm that we are making an informed choice to open it. To do this, go to your Apple icon, then to System Preferences, and then to Security and Privacy. You will end up here where a message that your I2P install process has been blocked. Click on "Open Anyway."



- 4 We appreciate the abundance of caution, and the message letting us know what our consequences are. The message options here will default to "Cancel," but we will choose "Open" instead.



- 5 Start with choosing your preferred language, and we will choose "Next" as we move through this next install process.



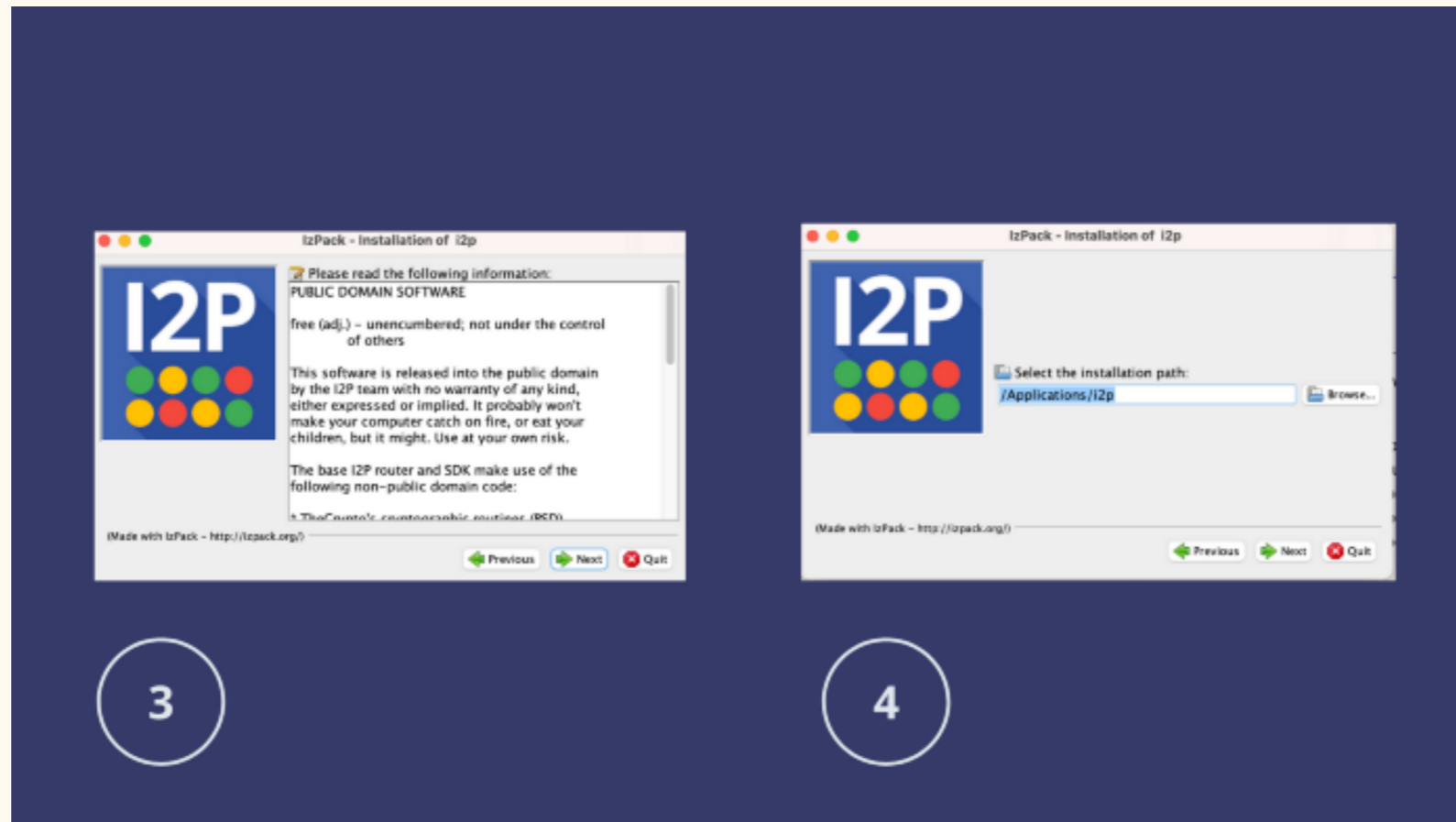
Cleaned up the side menu bar. Made the instructions clearer, removed the Java error and Java download steps. Added numbers for the steps.

Changed "Opening I2P" to "Launching I2P" ...maybe not.

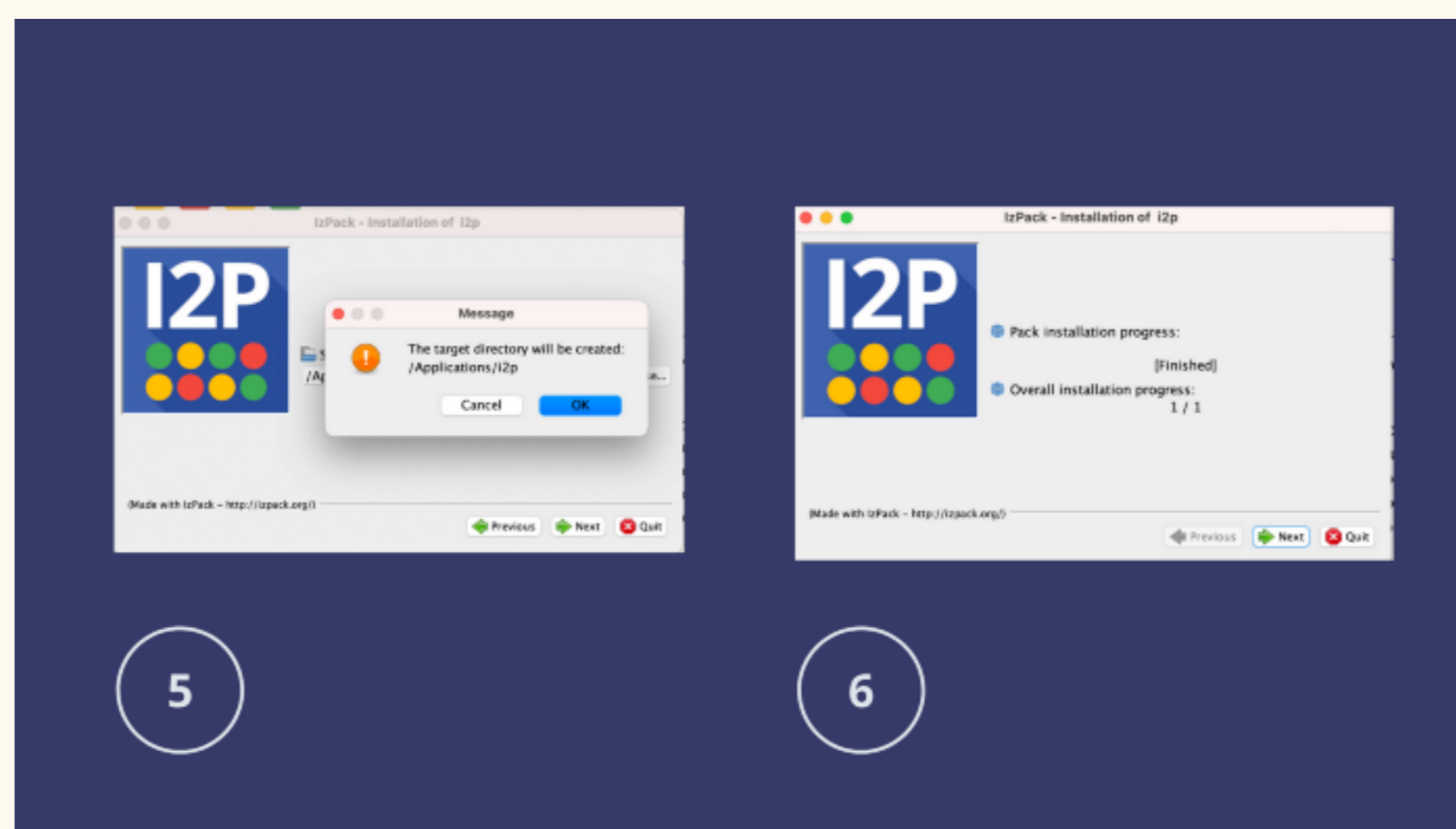
Step 2: Installation

- I2P Installation
- Launching I2P
- Wizard Walk-through

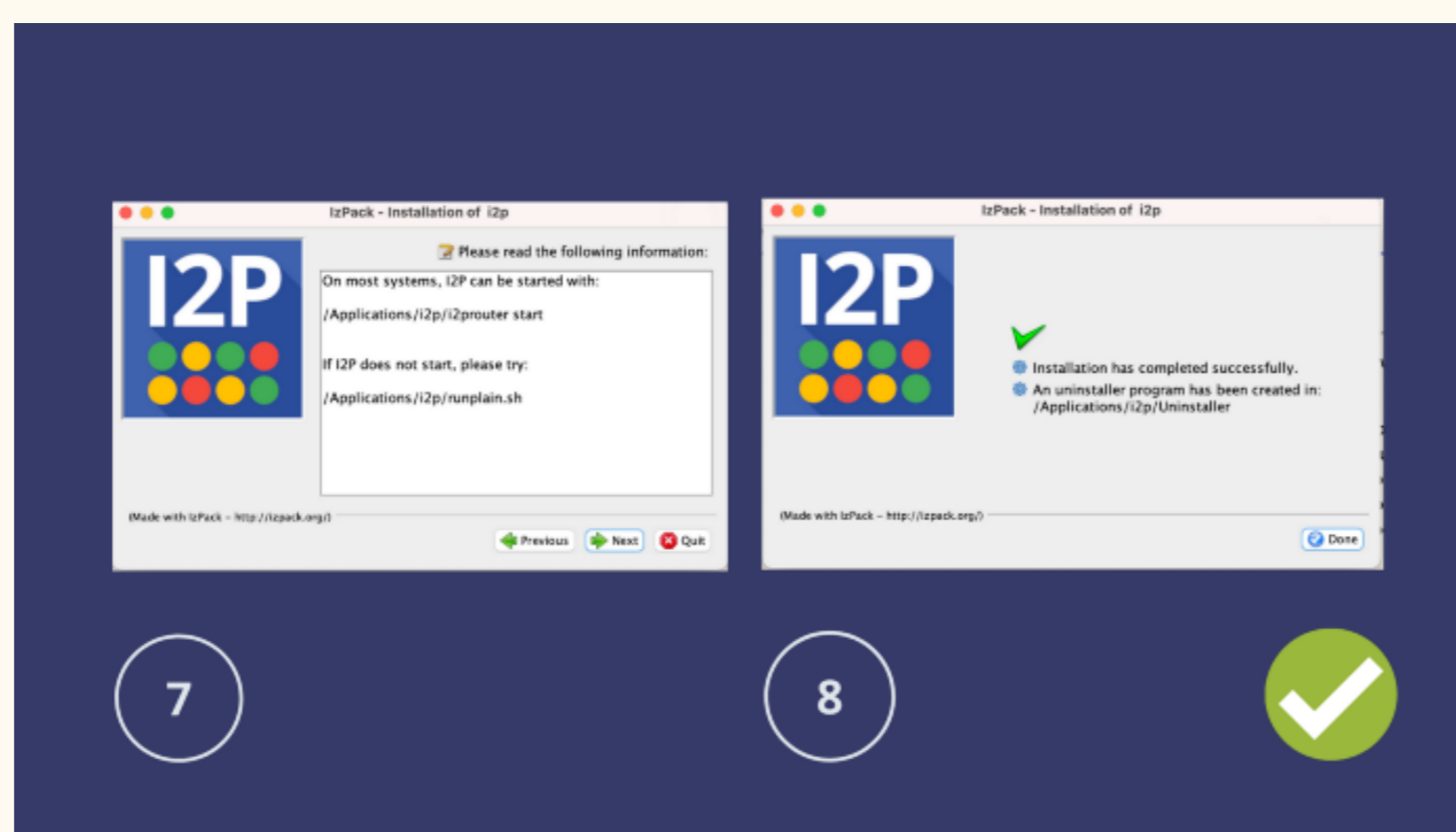
6 Here is more information about the software, and the default installation path will be in your applications. This is correct. Choose "Next" to keep moving along.



7 Here is a message letting us know that the target directory is going to be created. Choose "OK" and it will get set up for you.

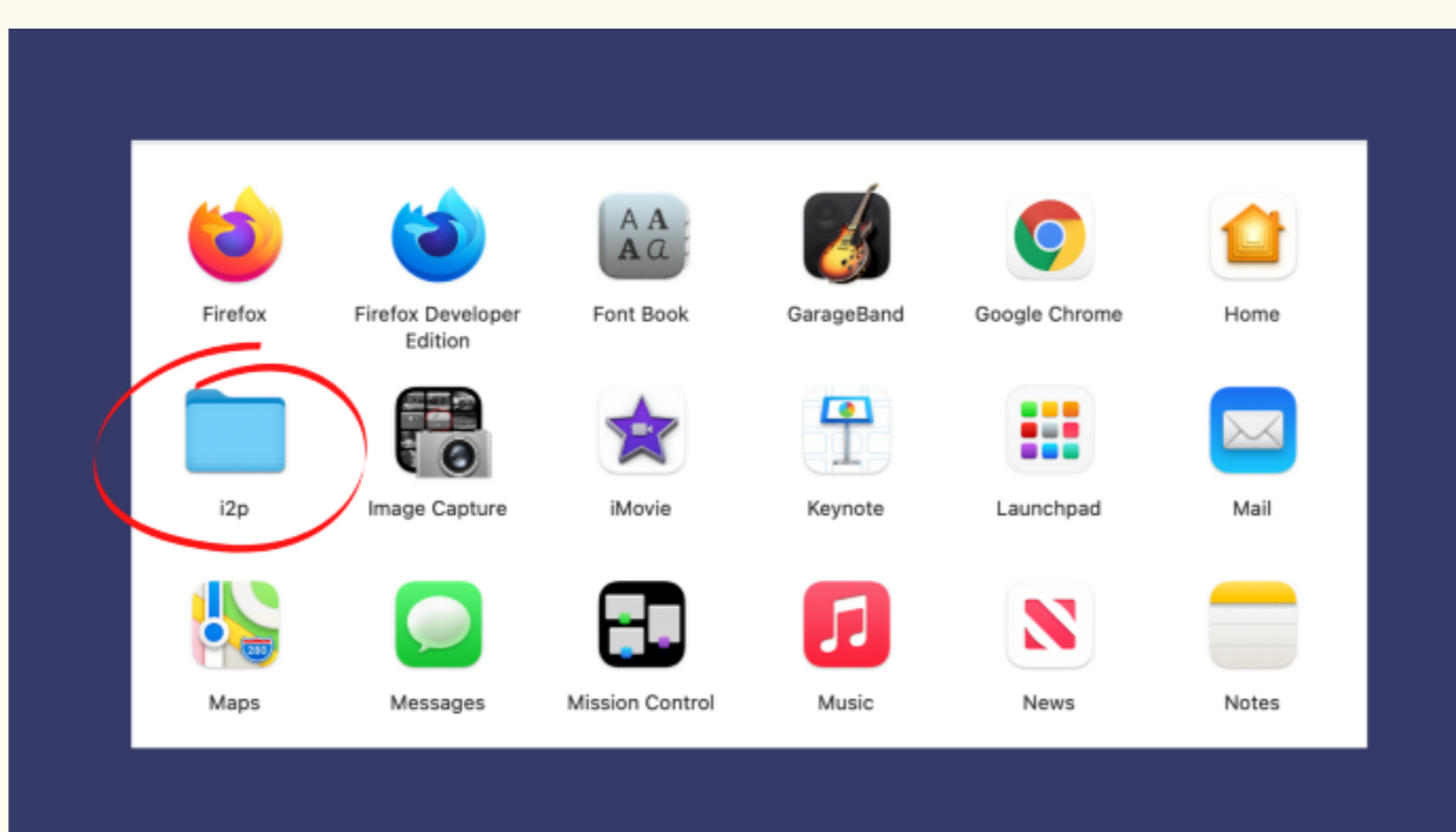


8 The next message is important to know if you need to or want to start I2P using Terminal. Copy paste this information, and keep it where you can find it later. If you forget, that is okay. Searching for "start I2P" on your mac will highlight this document for you if you ever need it. And, with one final "Next" we have finished installing the I2P software!



Launching I2P

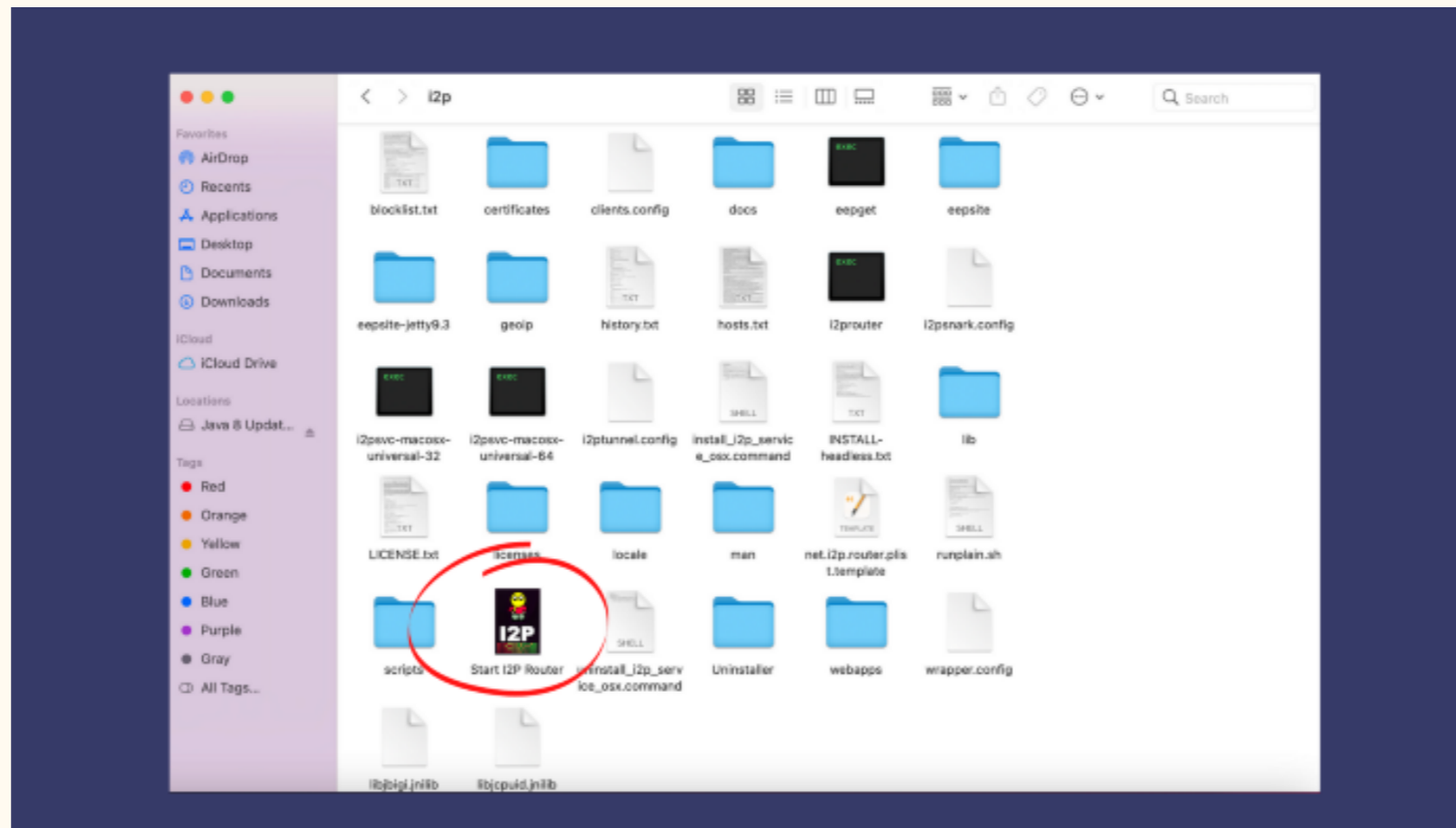
1 Go to Finder, and open your Applications. Here is the I2P folder:



Step 2: Installation

- I2P Installation
- Launching I2P
- Wizard Walk-through

2 When we open the folder, we see the full contents of the software. This includes an icon with a little yellow creature in a red shirt and green pants. This is Toopie, and you can click on this to start the I2P router.



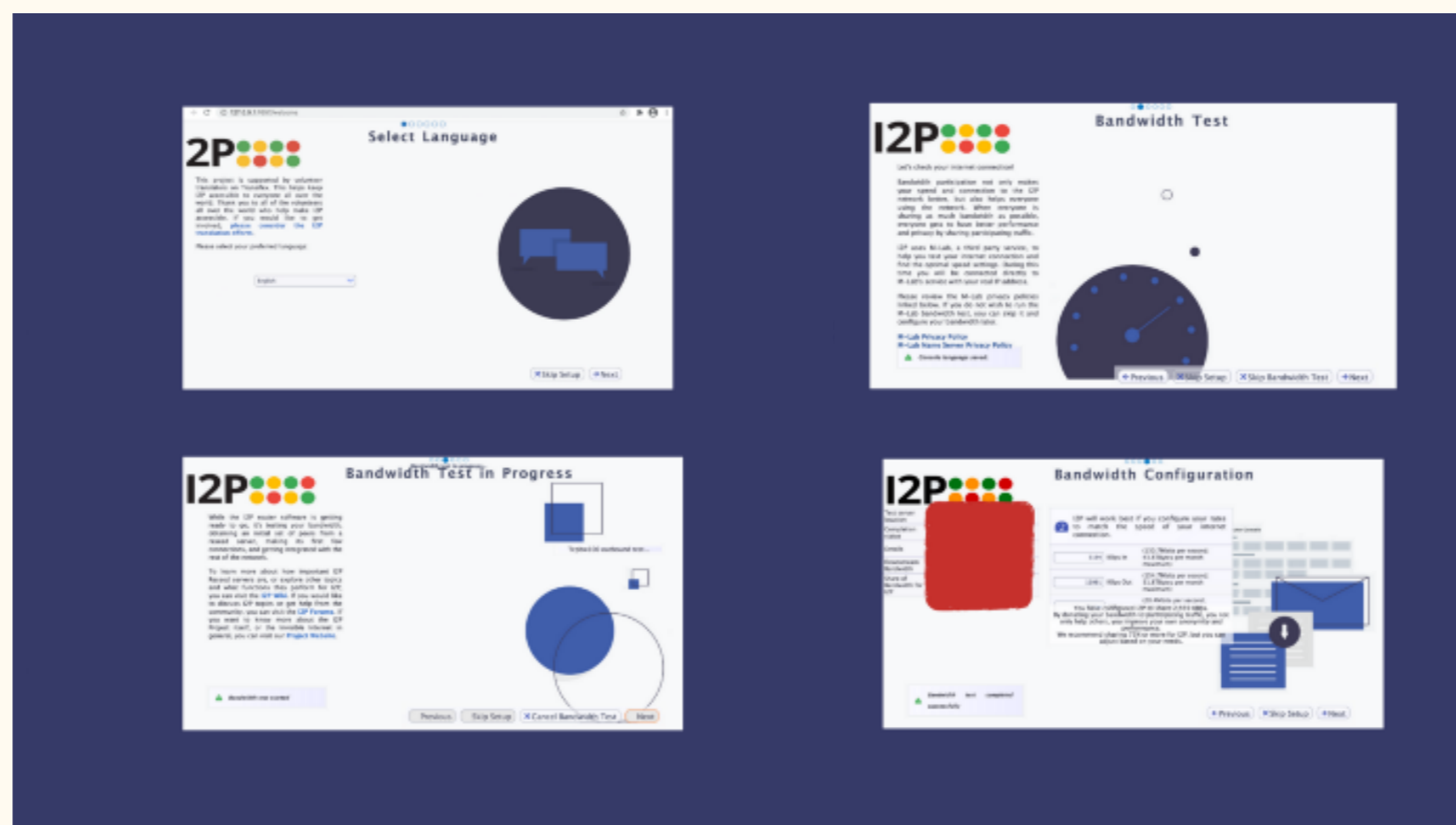
3 Manually drag this icon into our dock.



Wizard Walk-through

1 The wizard was created for a few reasons. One, to choose your router console language, the next to test and set your bandwidth for network participation, and finally, to allow your I2P network connection to get started so that you have some peers ready for you when it is done. Follow the prompts!

For the bandwidth settings, the software has good default sharing percentages in place, so no need to worry about picking the right amount. You can also adjust this later.



2 You've completed the installation process! Proceed to configure your browser [here](#). ➔

Removed numbers in walk-through to reduce confusing it for steps to follow. Alternatively, just have a screenshot of the first page.

Added a step for moving onto Step 3: Configuration

Step 3: Configuration

Browser Configuration

- [Firefox](#)
- [Chrome](#)
- [Android](#)
- [Internet Explorer](#)

Configuring Your I2P Network Connections

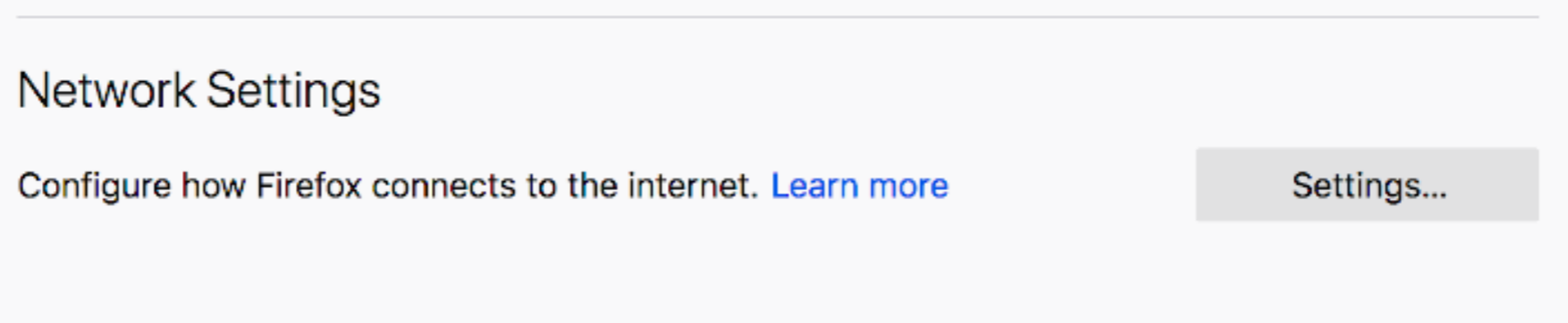
Browser Configuration

You must configure your browser in order to use I2P. Choose your browser below for instructions.

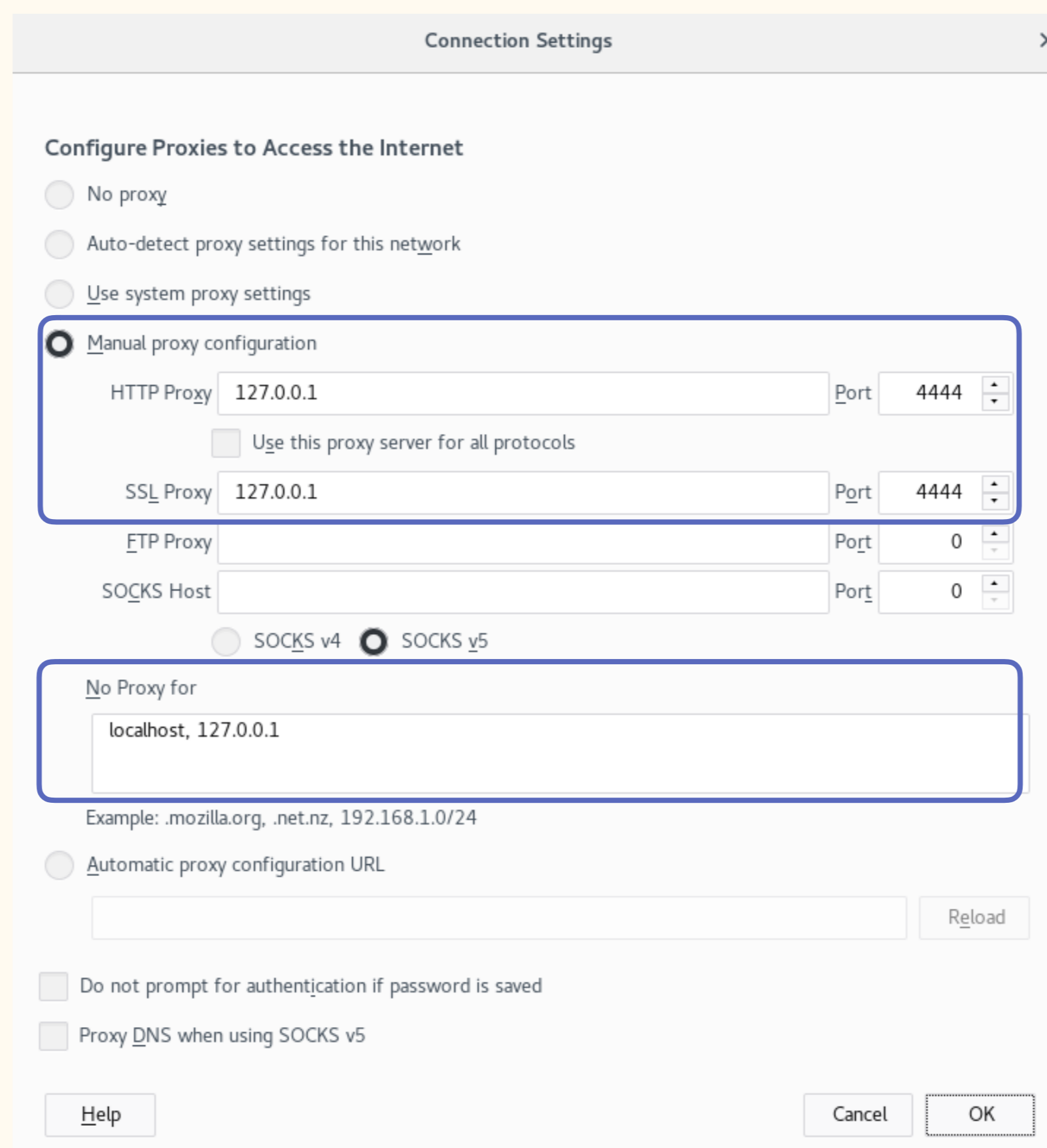
- [Firefox](#)
- [Chrome](#)
- [Android](#)
- [Internet Explorer 8](#)

Instructions for Firefox 57 and above:

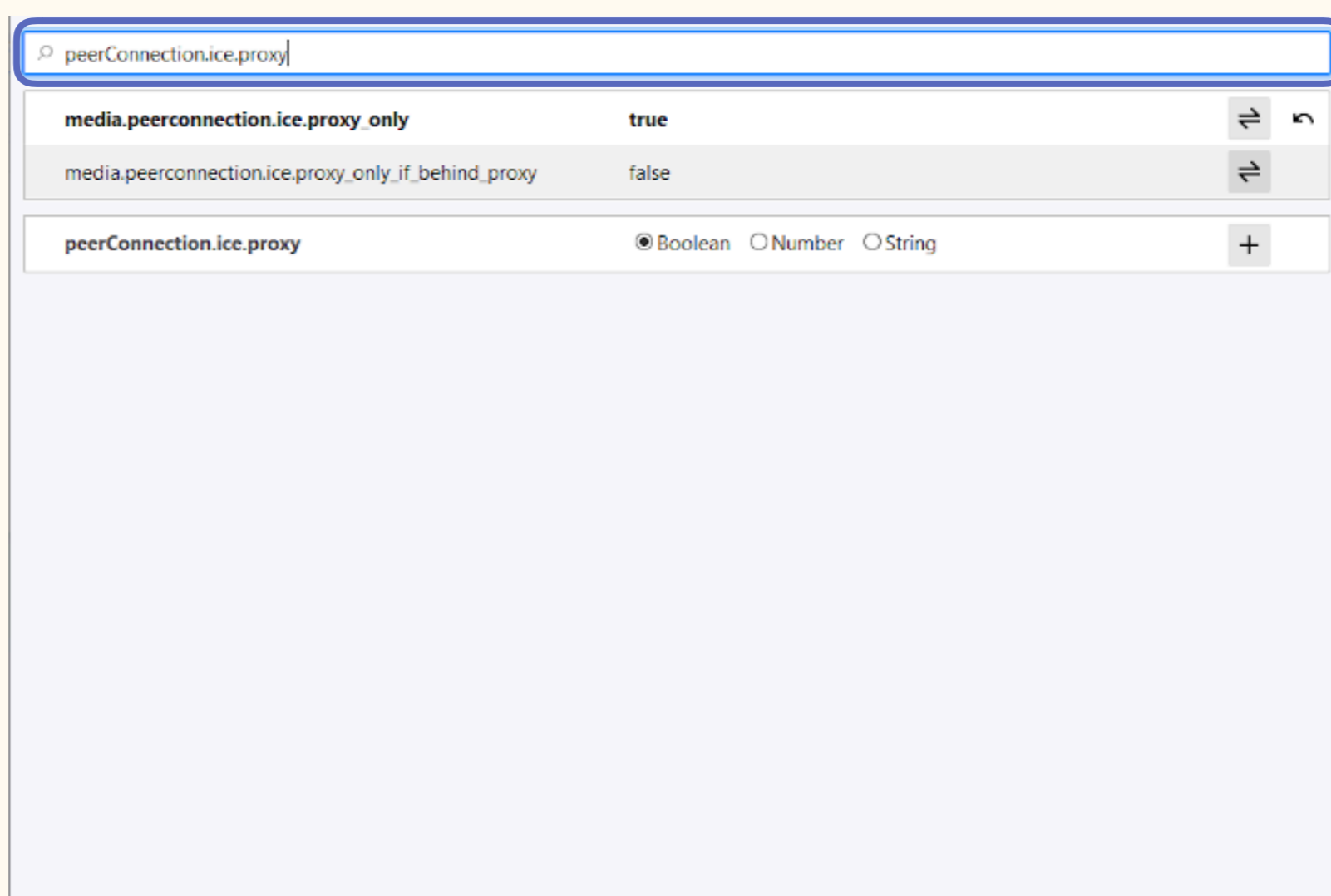
From the Menu button in the top right, select *Preferences*. Scroll down until you see the *Network Proxy* section, as shown in the screenshot below. Click on *Settings*



In the *Connection Settings* pop-up, select *Manual proxy configuration*. Set both the HTTP and SSL Proxy to address 127.0.0.1 with port 4444 as shown in the following screenshot.



Finally, go to the address *about:config* and find the property *media.peerConnection.ice.proxy_only*. Ensure that this setting is True.



Cleaned up side menu bar.

Is there a better page for these sections, since they are optional?

Firefox Privacy Add-on
NAT and Bandwidth
Outproxy Terms of Service

An idea for the Firefox Privacy Add-On is to add it as part of the instructions.

Added boxes on exactly where to click or enter info.

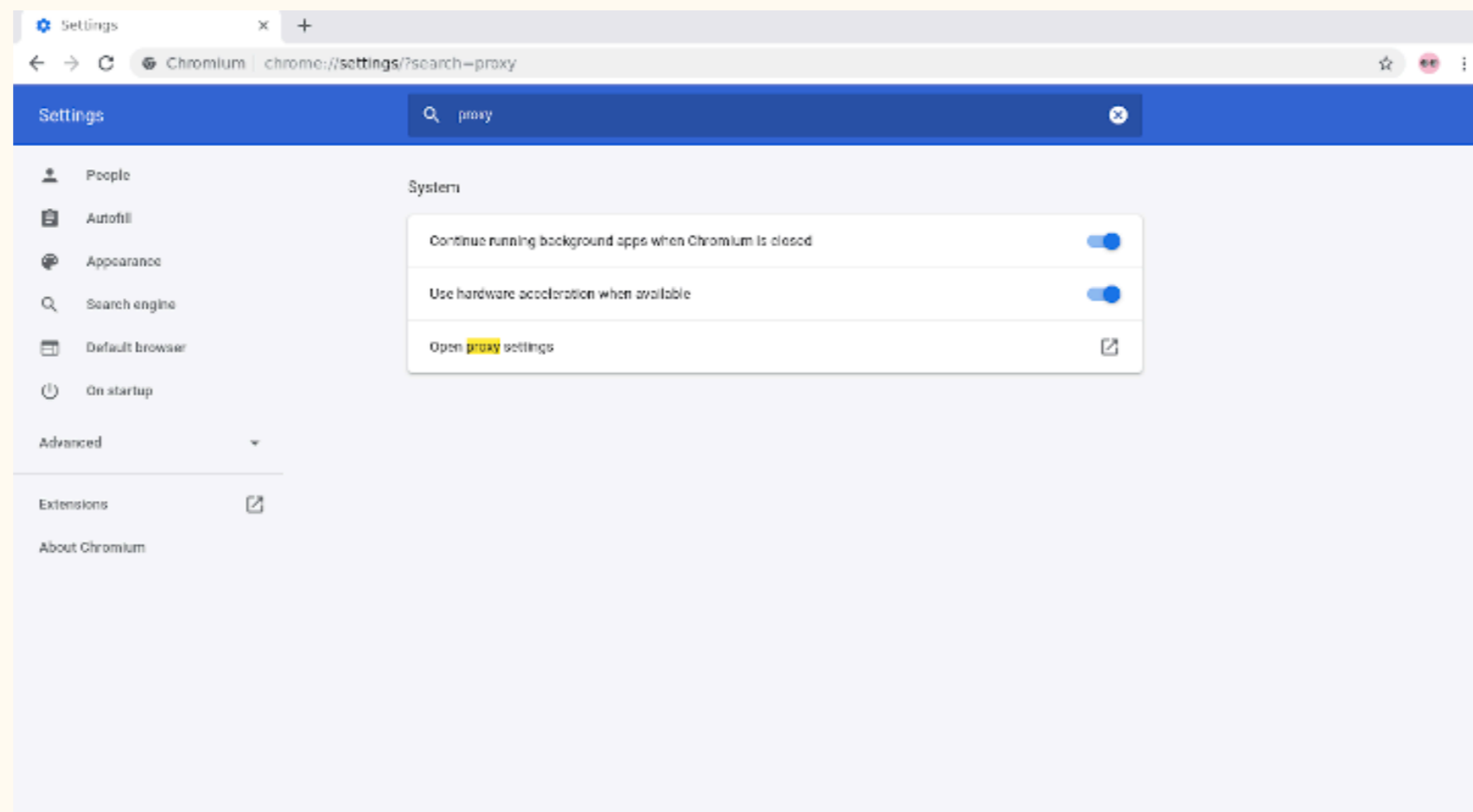
Step 3: Configuration

Browser Configuration

- Firefox
- Chrome
- Android
- Internet Explorer

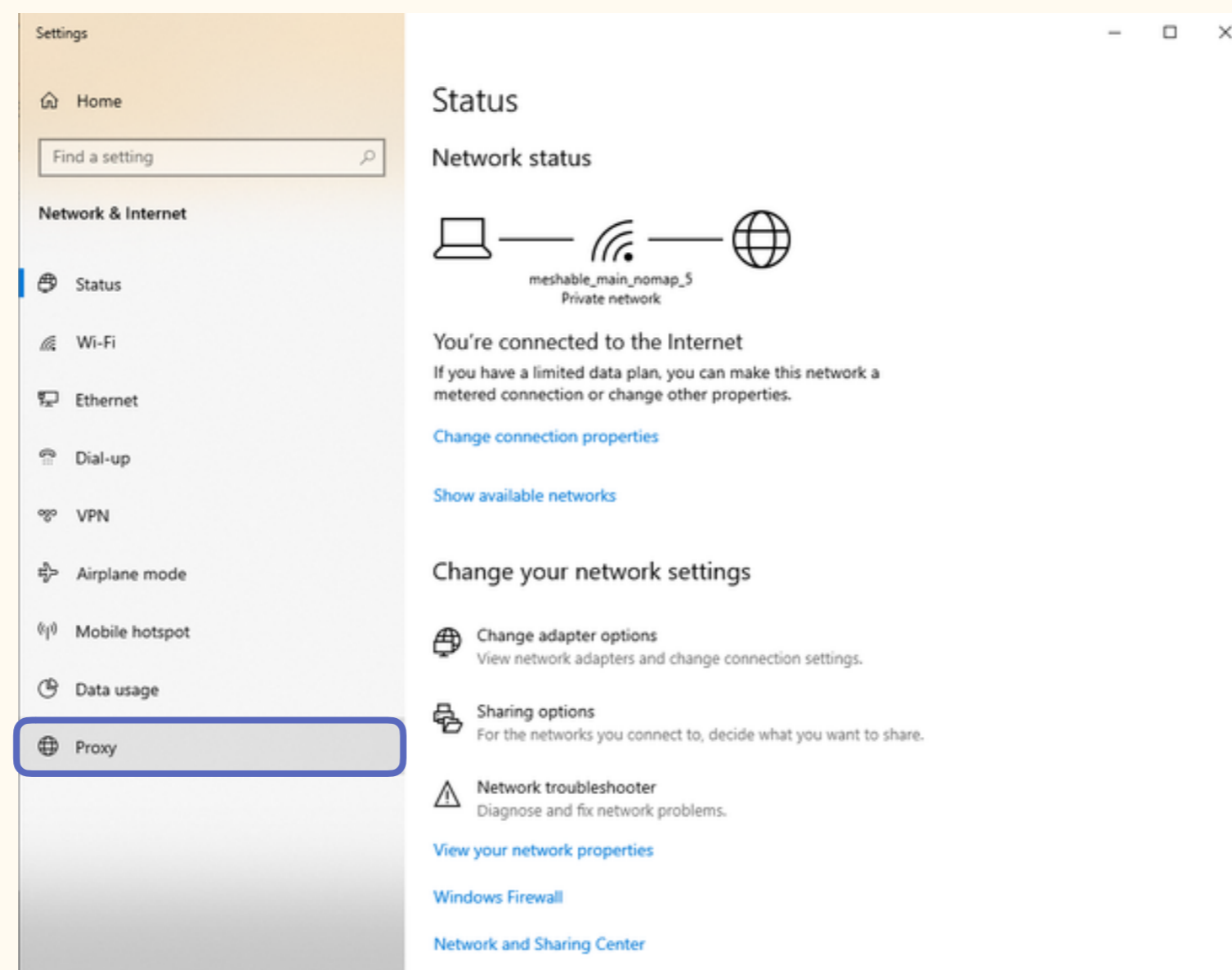
Instructions for Chrome

From the *Main* menu, navigate to the *Settings*, and search for the menu item. Clicking it will open the right settings for your platform.

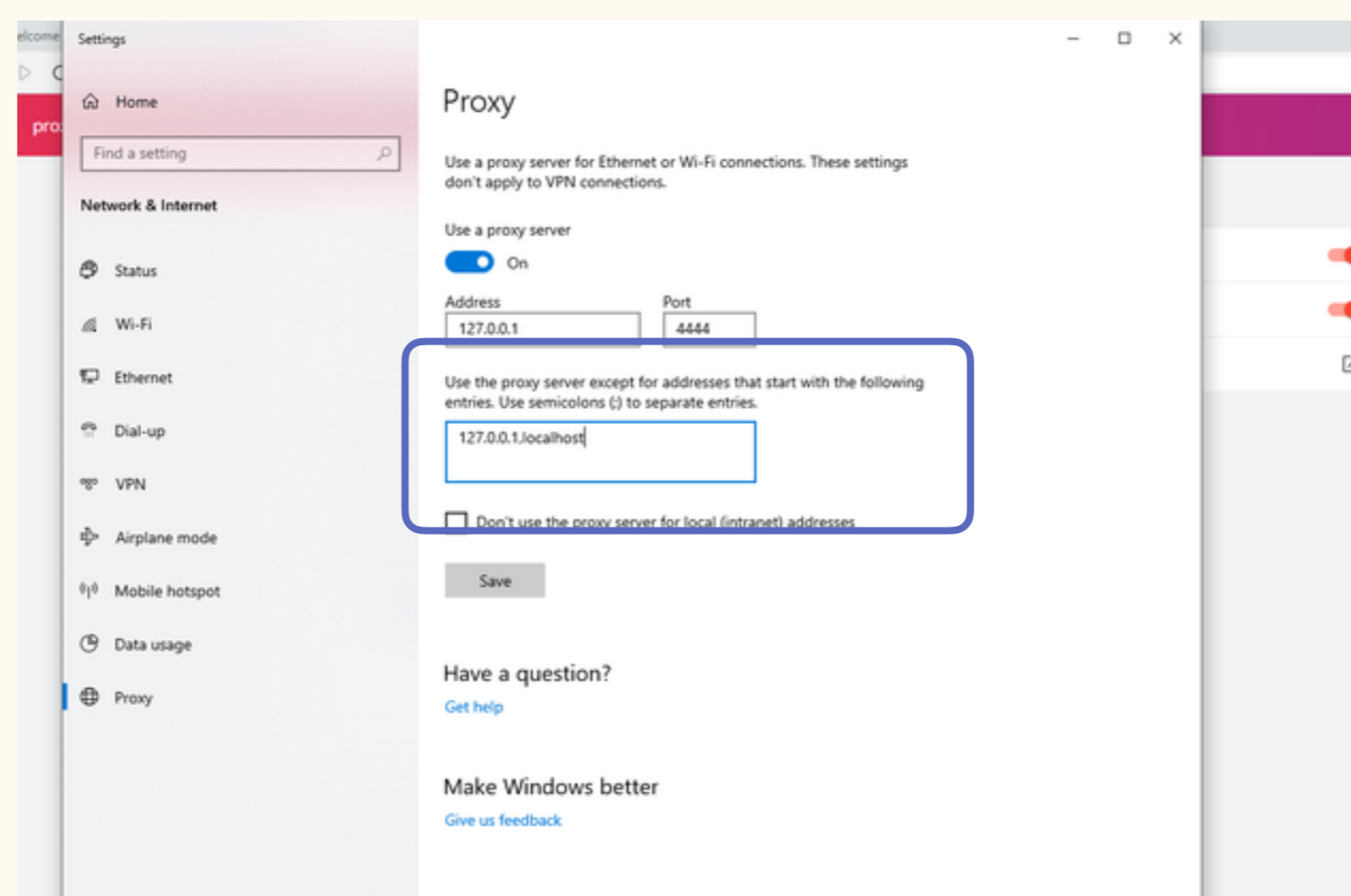


Instructions for Internet Explorer

In the start menu search for the the "Network and Internet Settings" to open the settings. The last entry in the menu is the Proxy Settings, click it to your proxy to connect to I2P.



Now set the checkmark at "use a proxy server for your LAN" and at the "Bypass proxy server for local addresses". With a click on Advanced-button you open the window to open the ports. Enter the values like on the picture, IP 127.0.0.1 and port 4444 for HTTP, port 4445 for HTTPS. With clicks on OK you save the settings and your browser is set to use the I2P proxy.



Added a "You've completed!" final step. User can go onto optional step, Explore.

You've completed the Configuration process! Learn how to use and explore I2P [here](#).