

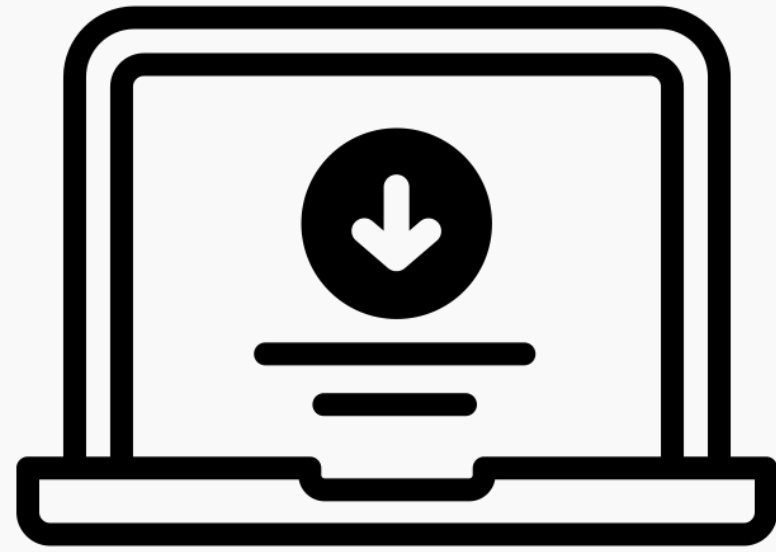
Getting Started

System Requirements

For Windows, Mac, and Linux:
Java is required to run I2P. Download it [here](#).

For Android:
Android comes with a Java virtual machine as part of the platform, which I2P for Android uses. Therefore it is not necessary to install Java to use I2P for Android.

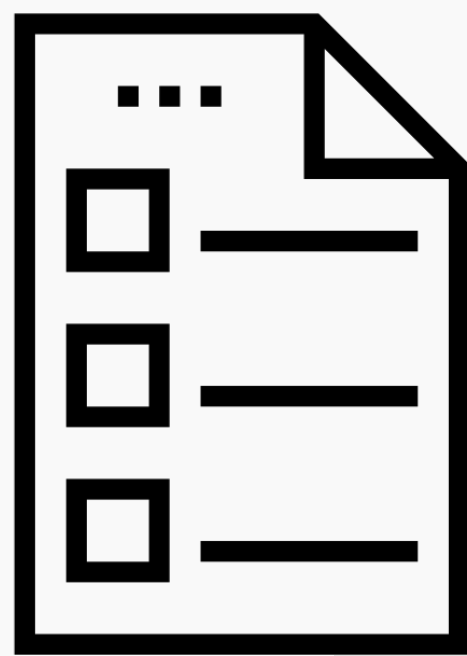
Debian and Ubuntu:
On Debian and Ubuntu when using a .deb package to install, the system will automatically install and configure a Java environment for you.



Z

1. Download the Software

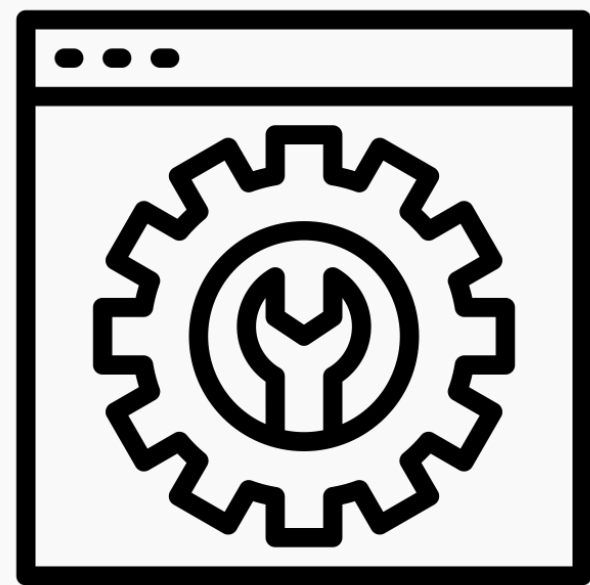
Windows, Mac and Linux users will need to download and install Java as well.



Z

2. Follow the Installation Instructions

A detailed installation guide will walk you through both the Java and I2P install process.



Z

3. Configure your Browser

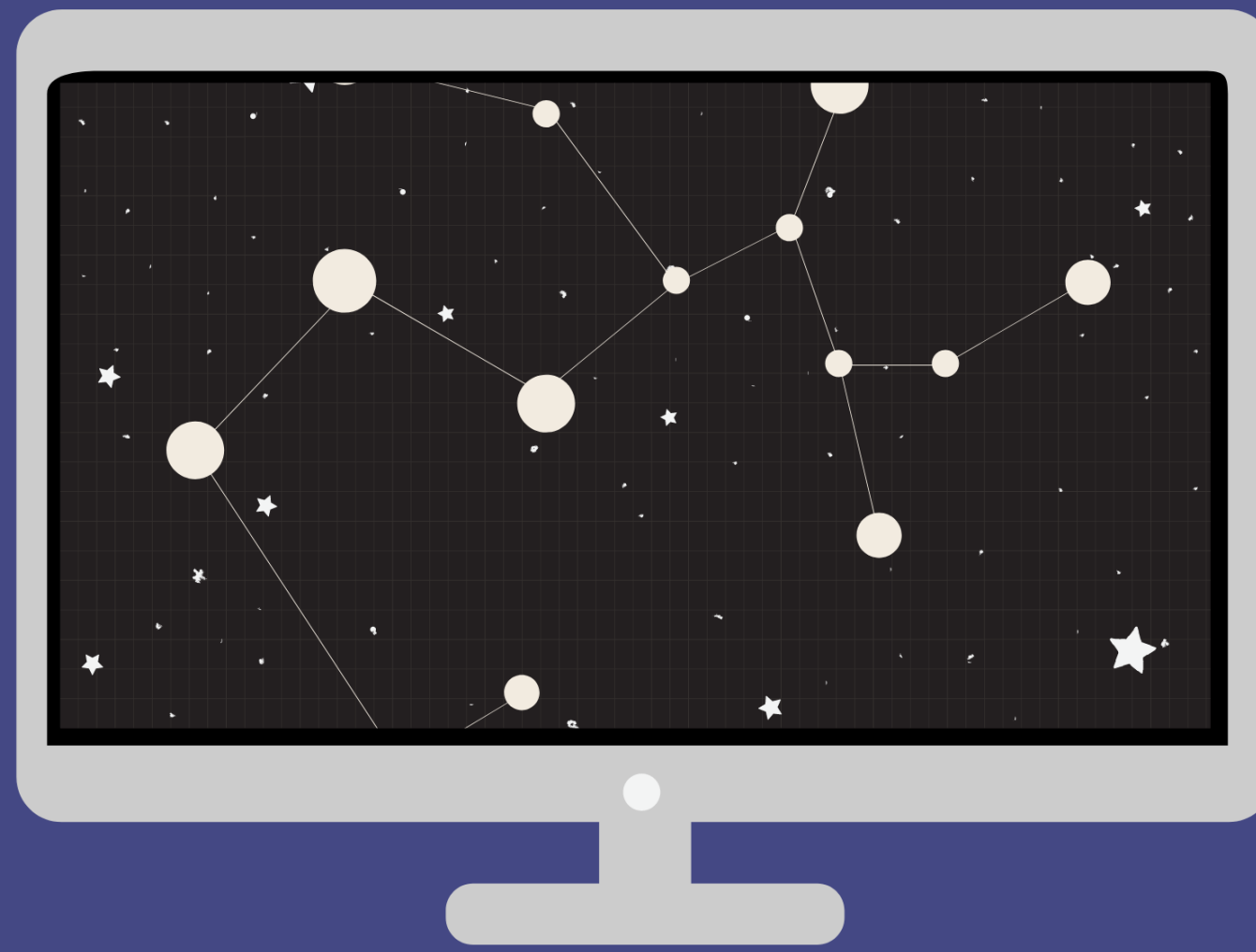
To access I2P sites, you will need to make a few configurations to your browser.

The project has Privacy Add-Ons and a Windows profile that work with Firefox. If you prefer to manually configure your browser, instructions are included for Chrome, Internet Explorer and more.

[Download I2P](#)

I2P for Windows

Latest version: [0.9.50](#)

[Download I2P](#)

 [Java is required](#) run I2P

[select alternate mirror](#)[verify signature](#)

[What is this?](#)

SHA256:
34902d2a7e678fda9261d489ab31566

[What is this?](#)

[Windows](#)[Mac](#)[Ubuntu](#)[Debian](#)[Linux](#)[Android](#)[Docker](#)

Installation Requirements

Once you've got I2P downloaded, getting I2P installed and running will consist of up to three steps:

1 Download Java

I2P needs Java to run for Windows, Mac, and Linux.

Go to [java.com](#) to download.

2 Installation Guide

Step-by-step installation guide include setting up Java, installing I2P, and using the I2P set-up wizard.

Follow the [guide](#).

3 Browser Configuration

Configure your browser settings to be compatible with the I2P network.

[Firefox](#)
[Chrome](#)

Terminal Instructions

The most reliable way to launch the installer is from a terminal like this: `java -jar i2pinstall_1.5.0.jar`. This will launch the GUI installer. Depending on how your computer is set up, you may be able to start the installer by double-clicking the "i2pinstall_1.5.0.jar" file or right-clicking the file and selecting "Open with Java". Unfortunately, this behaviour is difficult to predict.

Command Line (Headless) Install

I2P can also be installed in a terminal environment, which may be especially useful for servers, containers, or certain virtual machines. If you wish to use the installer without a GUI, you can use the command `java -jar i2pinstall_1.5.0.jar -console` to follow the install procedure in your terminal.

DMG Bundle (BETA)

If you do not want to use the installer or do not have a Java Runtime Environment available on your Mac, you can try our latest DMG bundle.

[Windows DMG Bundle \(BETA\)](#)

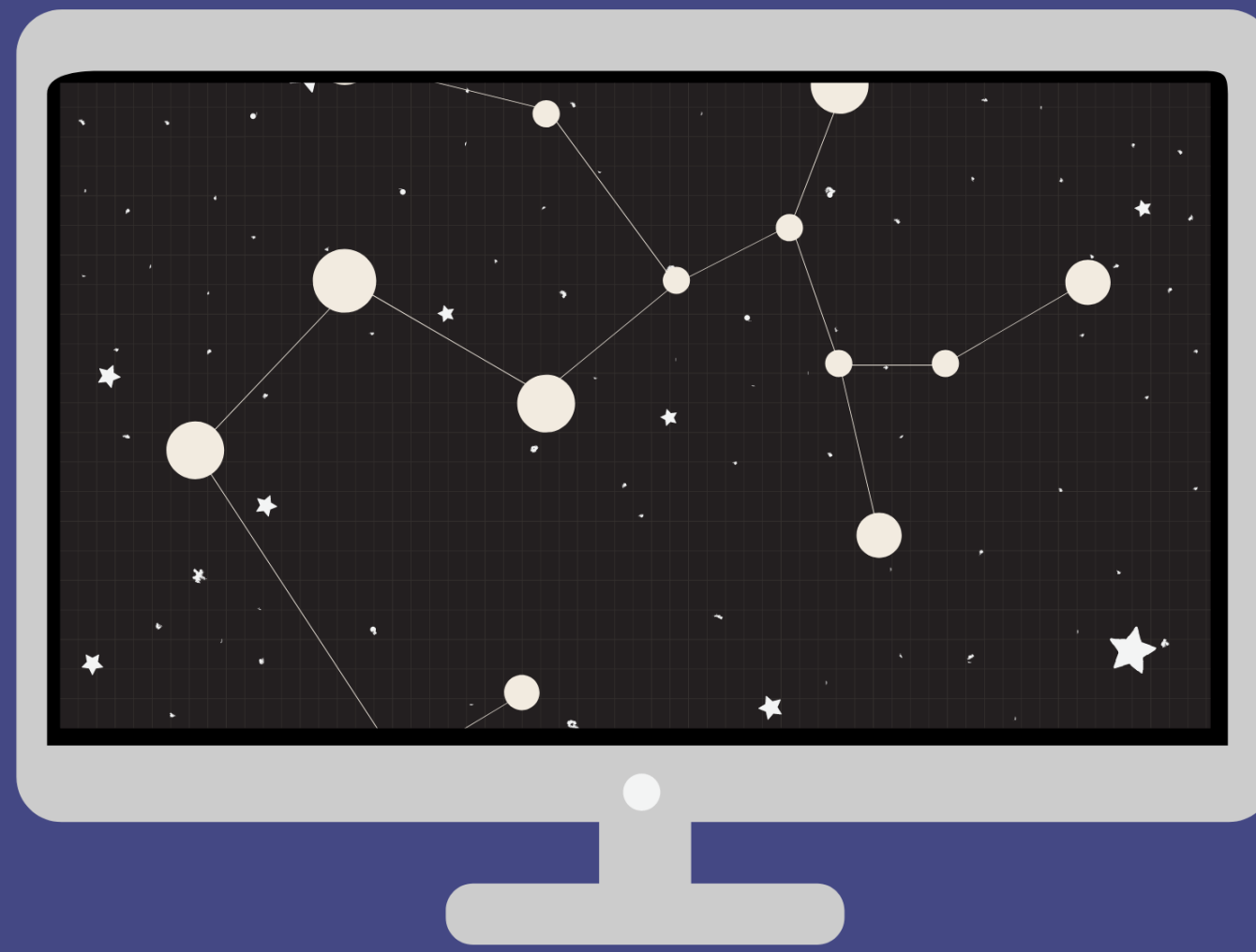
Additional Resources

If you are having issues on downloading, see the [Troubleshooting](#) page.

Get to know the I2P software [here](#).

I2P for Mac

Latest version: [0.9.50](#)



 [Java](#) is required run I2P

[select alternate mirror](#)

[verify signature](#)

[What is this?](#)

SHA256:
34902d2a7e678fda9261d489ab31566

[What is this?](#)

 [Windows](#)

 [Mac](#)

 [Ubuntu](#)

 [Debian](#)

 [Linux](#)

 [Android](#)

 [Docker](#)

Installation Requirements

Once you've got I2P downloaded, getting I2P installed and running will consist of up to three steps:

1 Download Java

I2P needs Java to run for Windows, Mac, and Linux.

Go to [java.com](#) to download.

2 Installation Guide

Step-by-step installation guide include setting up Java, installing I2P, and using the I2P set-up wizard.

Follow the [guide](#).

3 Browser Configuration

Configure your browser settings to be compatible with the I2P network.

[Firefox](#)
[Chrome](#)

Terminal Instructions

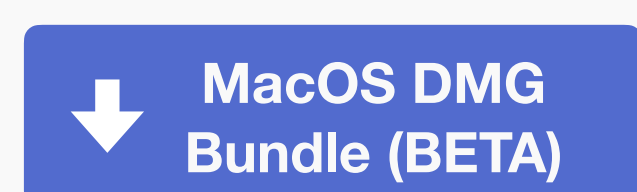
The most reliable way to launch the installer is from a terminal like this: `java -jar i2pinstall_1.5.0.jar`. This will launch the GUI installer. Depending on how your computer is set up, you may be able to start the installer by double-clicking the "i2pinstall_1.5.0.jar" file or right-clicking the file and selecting "Open with Java". Unfortunately, this behaviour is difficult to predict.

Command Line (Headless) Install

I2P can also be installed in a terminal environment, which may be especially useful for servers, containers, or certain virtual machines. If you wish to use the installer without a GUI, you can use the command `java -jar i2pinstall_1.5.0.jar -console` to follow the install procedure in your terminal.

DMG Bundle (BETA)

If you do not want to use the installer or do not have a Java Runtime Environment available on your Mac, you can try our latest DMG bundle.

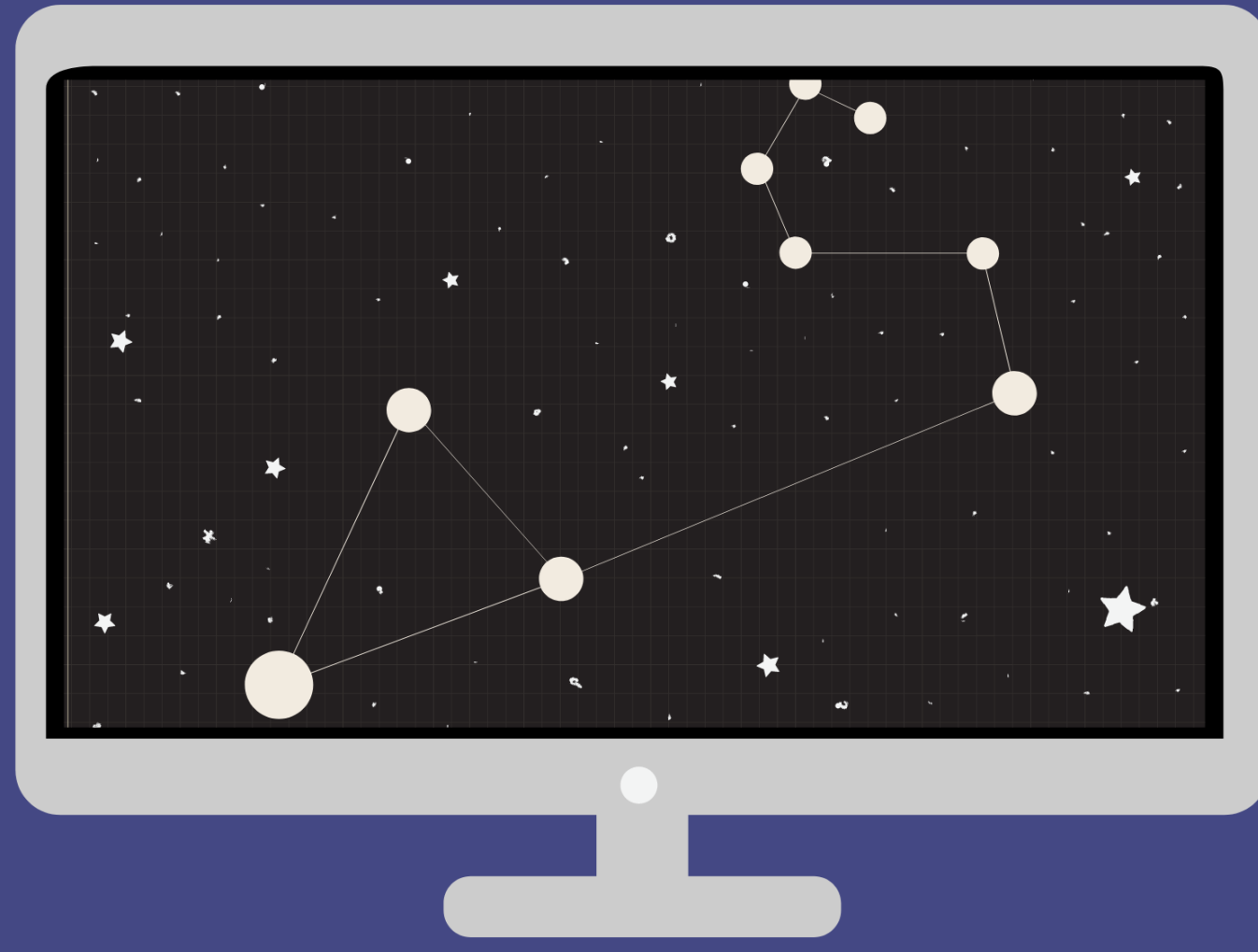


Additional Resources

If you are having issues on downloading, see the [Troubleshooting](#) page.

Get to know the I2P software [here](#).

I2P for Ubuntu

Latest version: [0.9.50](#)
[Packages for Ubuntu](#)
[select alternate mirror](#)
[verify signature](#)
[What is this?](#)

SHA256:
34902d2a7e678fda9261d489ab31566

[What is this?](#)
[Windows](#)
[Mac](#)
[Ubuntu](#)
[Debian](#)
[Linux](#)
[Android](#)
[Docker](#)

Ubuntu

I2P is available in the official repositories for Ubuntu Bionic and later. However, Ubuntu Bionic (LTS) distributions will have older I2P versions. If you are not running the latest Ubuntu release, use our [Launchpad](#) to ensure you're running the latest I2P version.

On Ubuntu when using a .deb package to install, the system will automatically install and configure a Java environment for you.

Installation Requirements

Once you've got I2P downloaded, getting I2P installed and running will consist of up to two steps:

1 Installation Guide

See below to follow the step-by-step installation instructions for Ubuntu and derivatives like Linux Mint & Trisquel

2 Browser Configuration

Configure your browser settings to be compatible with the I2P network.

[Firefox](#)
[Chrome](#)

Instructions for Ubuntu and derivatives like Linux Mint & Trisquel

Adding the PPA via the command line and installing I2P

1. Open a terminal and enter:
`sudo apt-add-repository ppa:i2p-maintainers/i2p`
2. This command will add the PPA to `/etc/apt/sources.list.d` and fetch the gpg key that the repository has been signed with. The GPG key ensures that the packages have not been tampered with since being built.
3. Notify your package manager of the new PPA by entering:
`sudo apt-get update`
4. This command will retrieve the latest list of software from each repository that is enabled on your system, including the I2P PPA that was added with the earlier command.
5. You are now ready to install I2P!
`sudo apt-get install i2p`

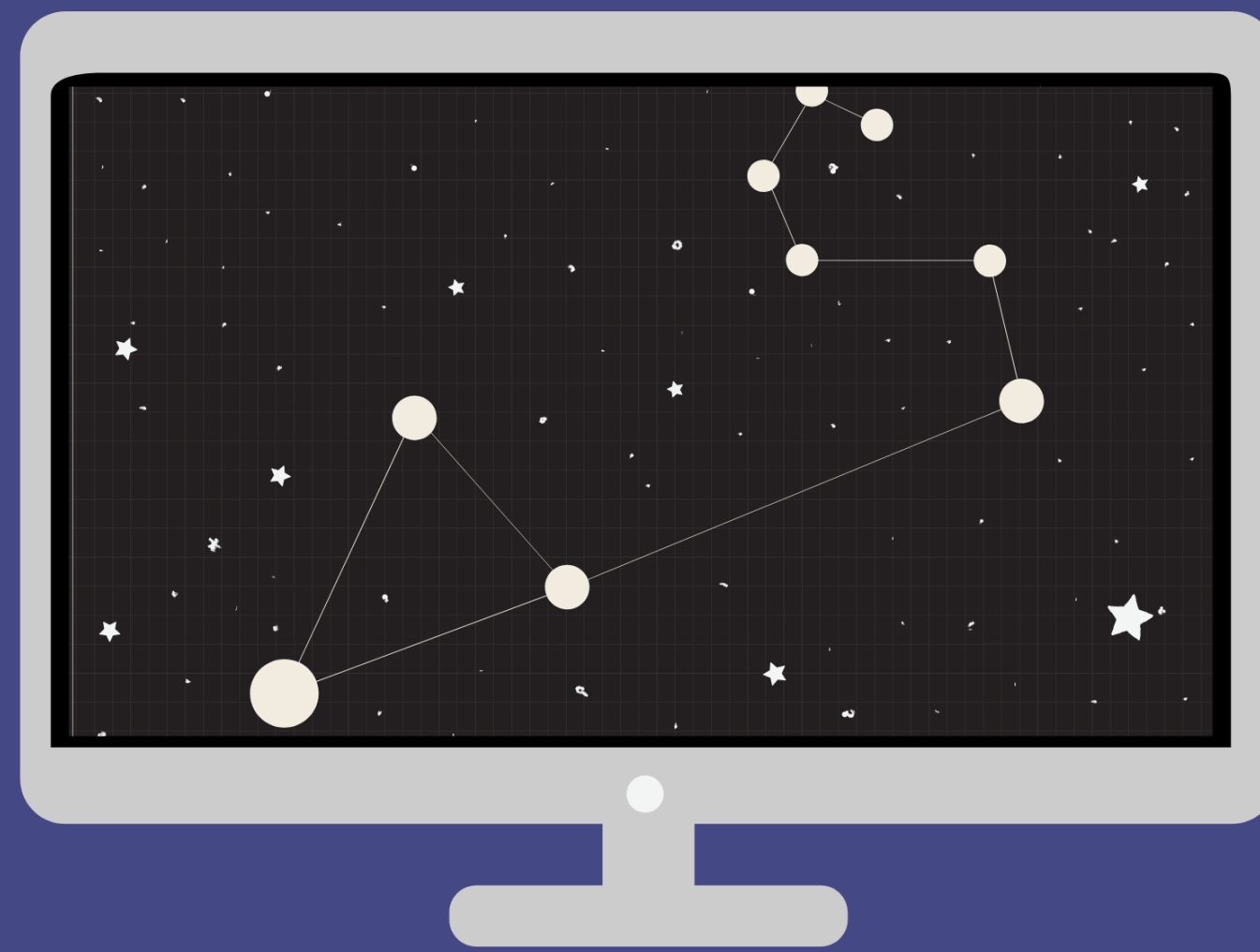
Prioritize command line instructions

Adding the PPA Using Synaptic

1. Open Synaptic (System -> Administration -> Synaptic Package Manager).
2. Once Synaptic opens, select *Repositories* from the *Settings* menu.
3. Click the *Other Sources* tab and click *Add*. Paste `ppa:i2p-maintainers/i2p` into the APT-line field and click *Add Source*. Click the *Close* button then *Reload*.
4. In the Quick Filter box, type in `i2p` and press enter. When `i2p` is returned in the results list, right click `i2p` and select *Mark for Installation*. After doing so you may see a *Mark additional required changes?* popup. If so, click *Mark* then *Apply*.

After the installation process completes you can move on to the next part of starting I2P and configuring it for your system.

I2P for Debian

Latest version: [0.9.50](#)
[Packages for Debian](#)
[select alternate mirror](#)
[verify signature](#)
[What is this?](#)

 SHA256:
 34902d2a7e678fda9261d489ab31566

[What is this?](#)

Windows

Mac

Ubuntu

Debian

Linux

Android

Docker

Debian

I2P is available in the official repositories for Debian Buster. However, Debian Buster will have older I2P versions. If you are not running Debian Sid, use our [Debian repo](#) to ensure you're running the latest I2P version.

On Debian when using a .deb package to install, the system will automatically install and configure a Java environment for you.

Installation Requirements

Once you've got I2P downloaded, getting I2P installed and running will consist of up to two steps:

1 Installation Guide

See below to follow the step-by-step installation instructions for Debian.

2 Browser Configuration

Configure your browser settings to be compatible with the I2P network.

[Firefox](#)
[Chrome](#)

Instructions for Debian

Currently supported architectures: amd64, i386, armhf, arm64, powerpc, ppc64el, s390x

Note: The steps below should be performed with root access (i.e., switching user to root with su or by prefixing each command with sudo).

1. Ensure that apt-transport-https and curl are installed.

```
sudo apt-get update
sudo apt-get install apt-transport-https curl
```

2. Check which version of Debian you are using on this page at the Debian wiki and verify with /etc/debian_version on your system. Then, for all Current Debian distributions run the following command to create /etc/apt/sources.list.d/i2p.list.

```
echo "deb [signed-by=/usr/share/keyrings/i2p-archive-keyring.asc] https://deb.i2p2.de/ $(lsb_release -sc) main" \
| sudo tee /etc/apt/sources.list.d/i2p.list
```

3. Download the key used to sign the repository:

```
curl -o i2p-archive-keyring.asc https://geti2p.net/_static/i2p-debian-repo.key.asc
```

4. Check the fingerprint and owner of the key without importing anything:

```
sudo mv ~/i2p-archive-keyring.asc /usr/share/keyrings
```

5. Notify your package manager of the new repository by entering

```
sudo apt-get update
```

This command will retrieve the latest list of software from every repository enabled on your system, including the I2P repository added in step 1.

6. You are now ready to install I2P! Installing the i2p-keyring package will ensure that you receive updates to the repository's GPG key.

```
sudo apt-get install i2p i2p-keyring
```

After the installation process completes you can move on to the next part of starting I2P and configuring it for your system.

Keep instructions on page. "See below for instructions"

I2P for Linux

Latest version: [0.9.50](#)

[Download I2P](#)

 [Java](#) is required run I2P

[select alternate mirror](#)[verify signature](#)

[What is this?](#)

SHA256:
34902d2a7e678fda9261d489ab31566

[What is this?](#)

[Windows](#)[Mac](#)[Ubuntu](#)[Debian](#)[Linux](#)[Android](#)[Docker](#)

Installation Requirements

Once you've got I2P downloaded, getting I2P installed and running will consist of up to three steps:

1 Download Java

I2P needs Java to run for Windows, Mac, and Linux.

Go to java.com to download.

2 Installation Guide

Step-by-step installation guide include setting up Java, installing I2P, and using the I2P set-up wizard.

Follow the [guide](#).

3 Browser Configuration

Configure your browser settings to be compatible with the I2P network.

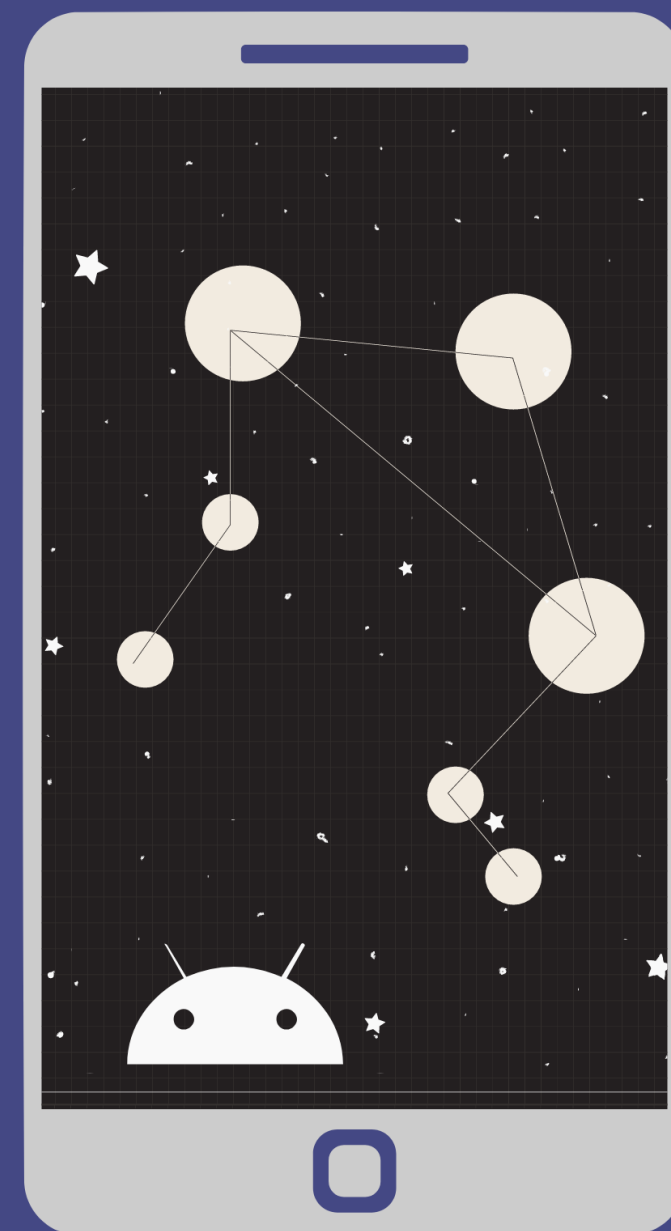
[Firefox](#)
[Chrome](#)

Terminal Instructions

The most reliable way to launch the installer is from a terminal like this: `java -jar i2pinstall_1.5.0.jar`. This will launch the GUI installer. Depending on how your computer is set up, you may be able to start the installer by double-clicking the "i2pinstall_1.5.0.jar" file or right-clicking the file and selecting "Open with Java". Unfortunately, this behaviour is difficult to predict.

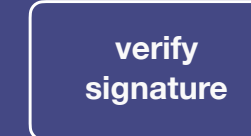
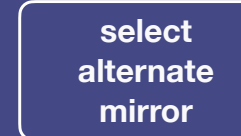
Command Line (Headless) Install

I2P can also be installed in a terminal environment, which may be especially useful for servers, containers, or certain virtual machines. If you wish to use the installer without a GUI, you can use the command `java -jar i2pinstall_1.5.0.jar -console` to follow the install procedure in your terminal.



I2P for Android

Latest version: [0.9.50](#)



[What is this?](#)

SHA256:
34902d2a7e678fda9261d489ab31566

[What is this?](#)



System Requirements

Requires Android 4.0 (Ice Cream Sandwich) or higher. If you earlier installed I2P, unfortunately this release fixes some IPC issues which will force you to uninstall your current installation before installing this.

512 MB RAM minimum; 1 GB recommended. The releases are not compatible with each other, as they have different signatures. Uninstall them completely before installing any other version. The apk's from [download.i2p2.de](#) are signed by idk.

Additional Resources

If you are having issues on downloading, see the [Troubleshooting](#) page.

Get to know the I2P software [here](#).

Installation Guide

Follow the step-by-step installation guide.

[Instructions](#)

Browser Set-Up

These browsers work best in Android:
[Privacy Browser by F-Droid](#)
[Privacy Browser by Stoutner](#)



I2P for Docker

Latest version: [0.9.50](#)

Get it at
DockerHub

You may retrieve the image by running the 'docker pull' command:

```
docker pull geti2p/i2p
```

SHA256:
34902d2a7e678fda9261d489ab31566

[What is this?](#)

 Windows

 Mac

 Ubuntu

 Debian

 Linux

 Android

 Docker

System Requirements

Requires Docker to be installed on any host system.

For Windows and OSX go to <https://www.docker.com/products/docker-desktop>

Additional Resources

If you are having issues on downloading, see the [Troubleshooting](#) page.

Get to know the I2P software [here](#).

Advanced Installation Instructions

Docker instructions for those that are curious about composing Docker containers together.

[Instructions](#) [Link coming soon!](#)

Browser Configuration

Configure your browser settings to be compatible with the I2P network:

[Firefox](#)
[Chrome](#)
[Internet Explorer](#)

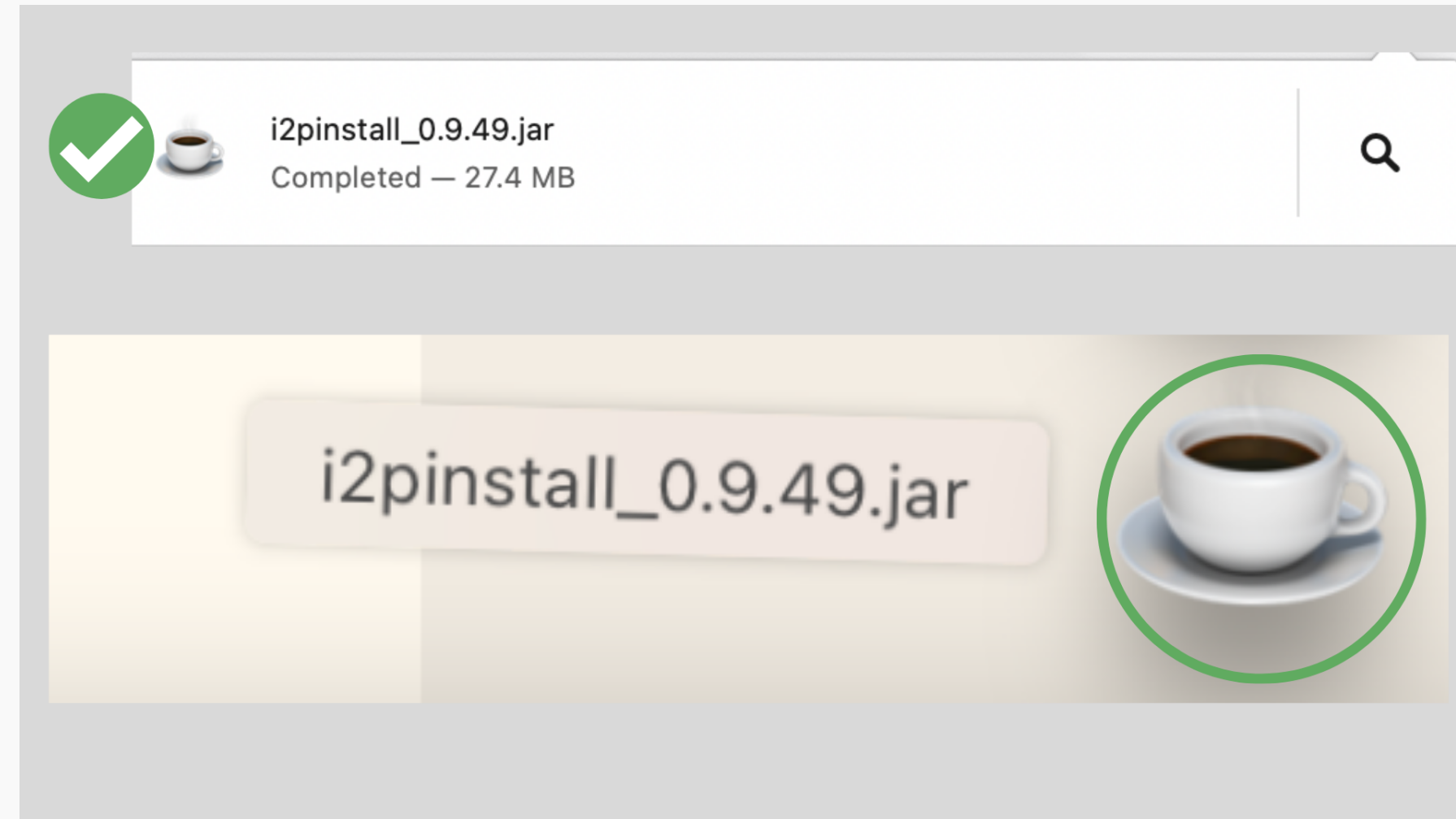
For a pure Docker webflow:

```
xhost + local:docker
docker run -it --rm \
  --net=host \
  -e DISPLAY=unix$(DISPLAY) \
  -v /tmp/.X11-unix:/tmp/.X11-unix \
  geti2p/i2p.firefox firefox --profile /src/build/profile
```


Installation Instructions for Mac OS

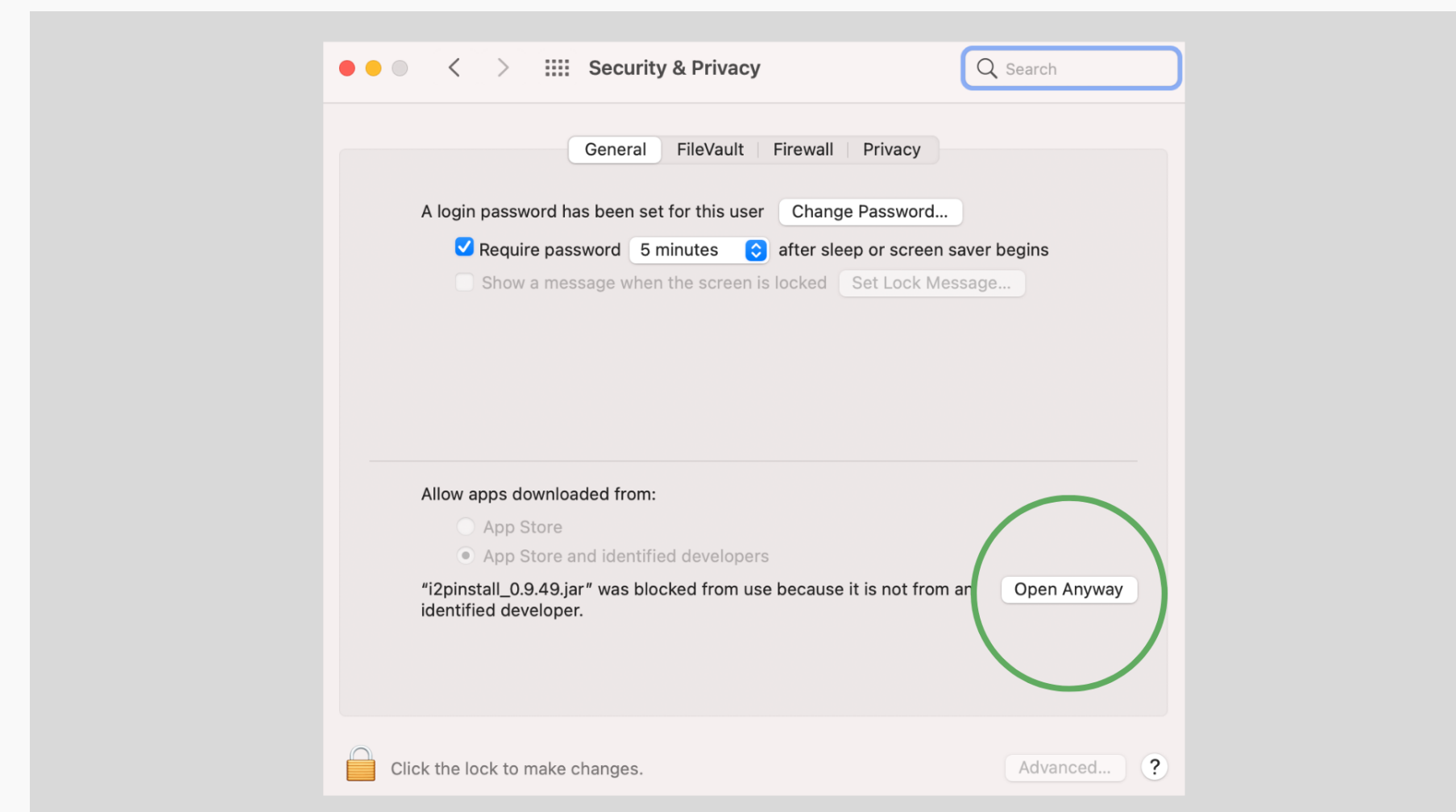
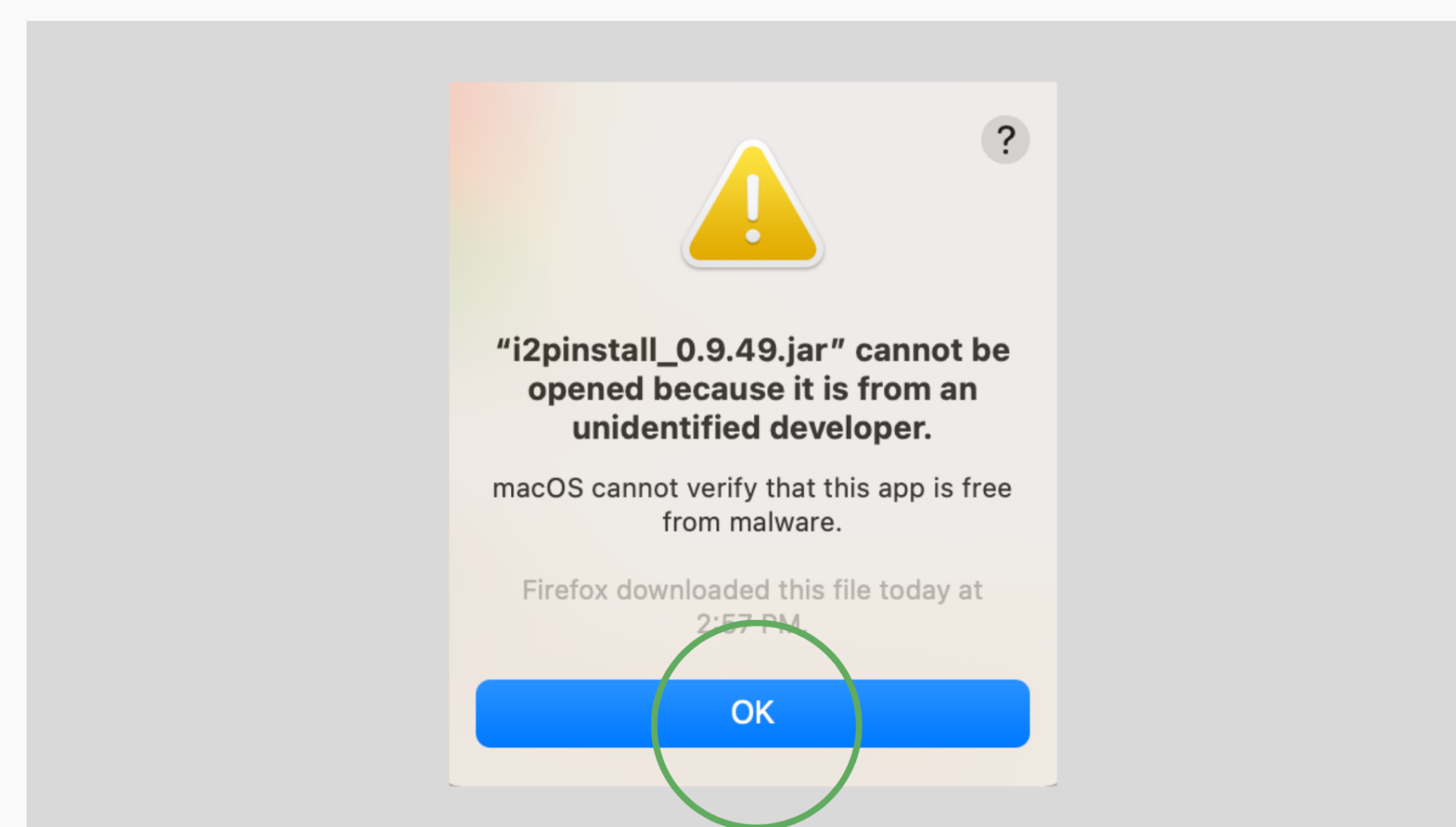
I2P Installation

- 1 Download and install [Java](#) if you have not already. Step by step installation instructions for Java can be found [here](#).
- 2 Open the .jar file. Notice the coffee cup icon, which means it can be opened since Java is installed.

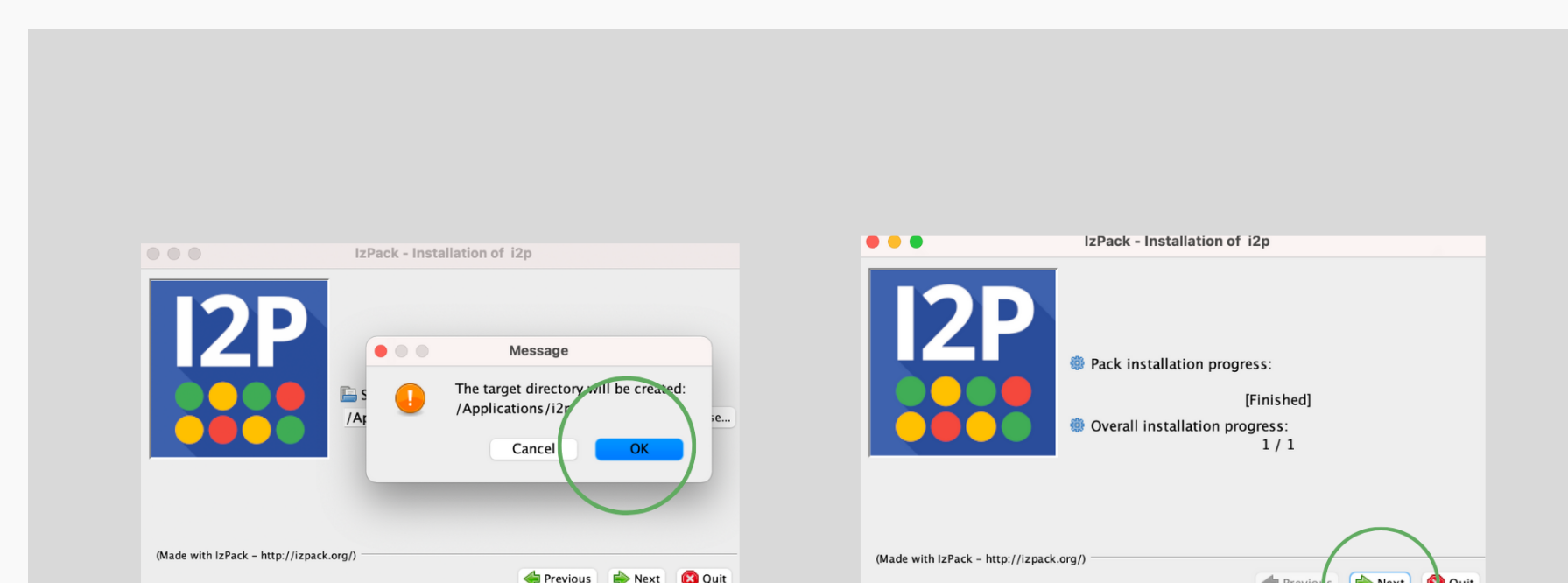
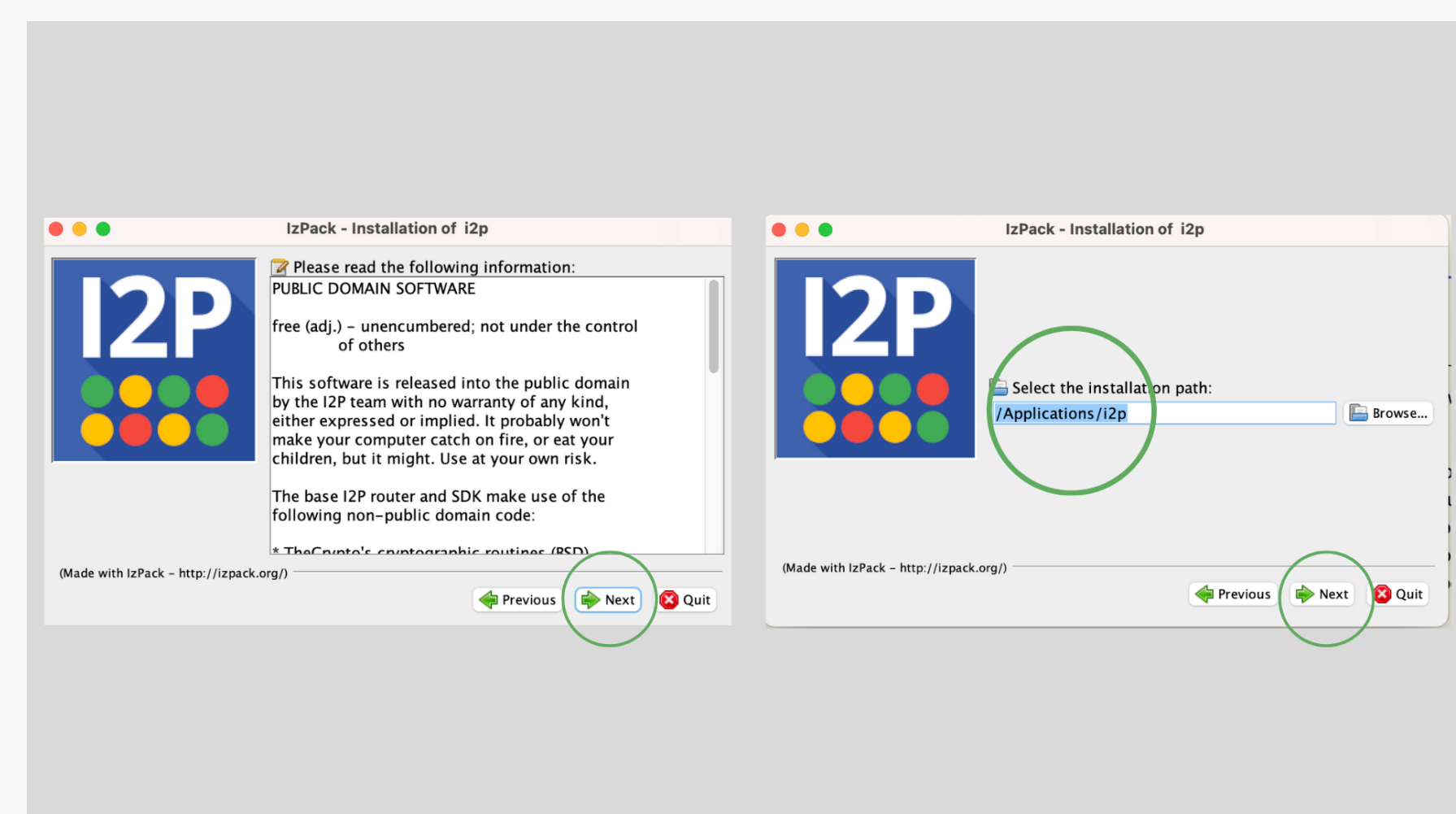
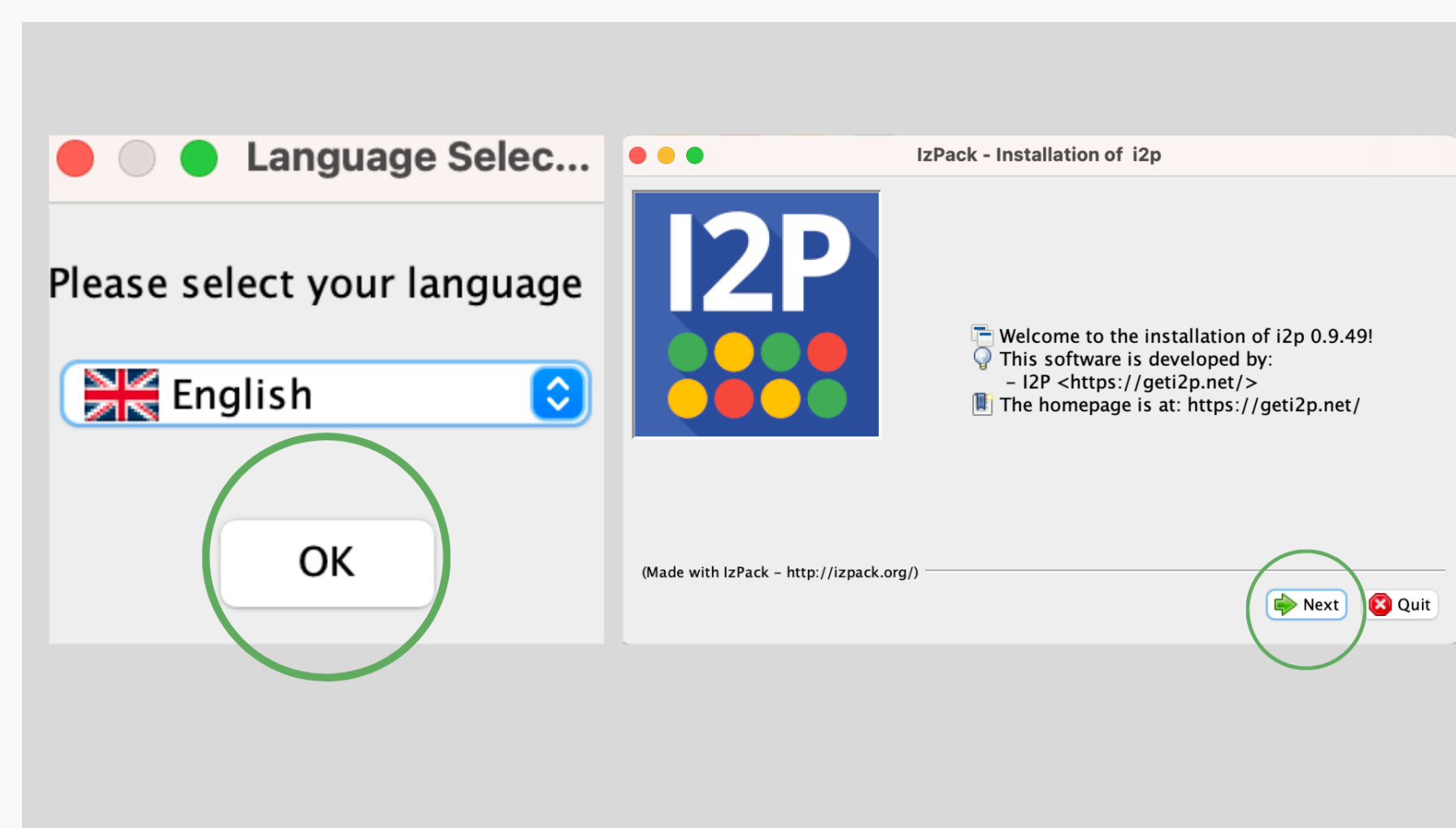


- 3 Mac will ask you to allow permissions to open the file.

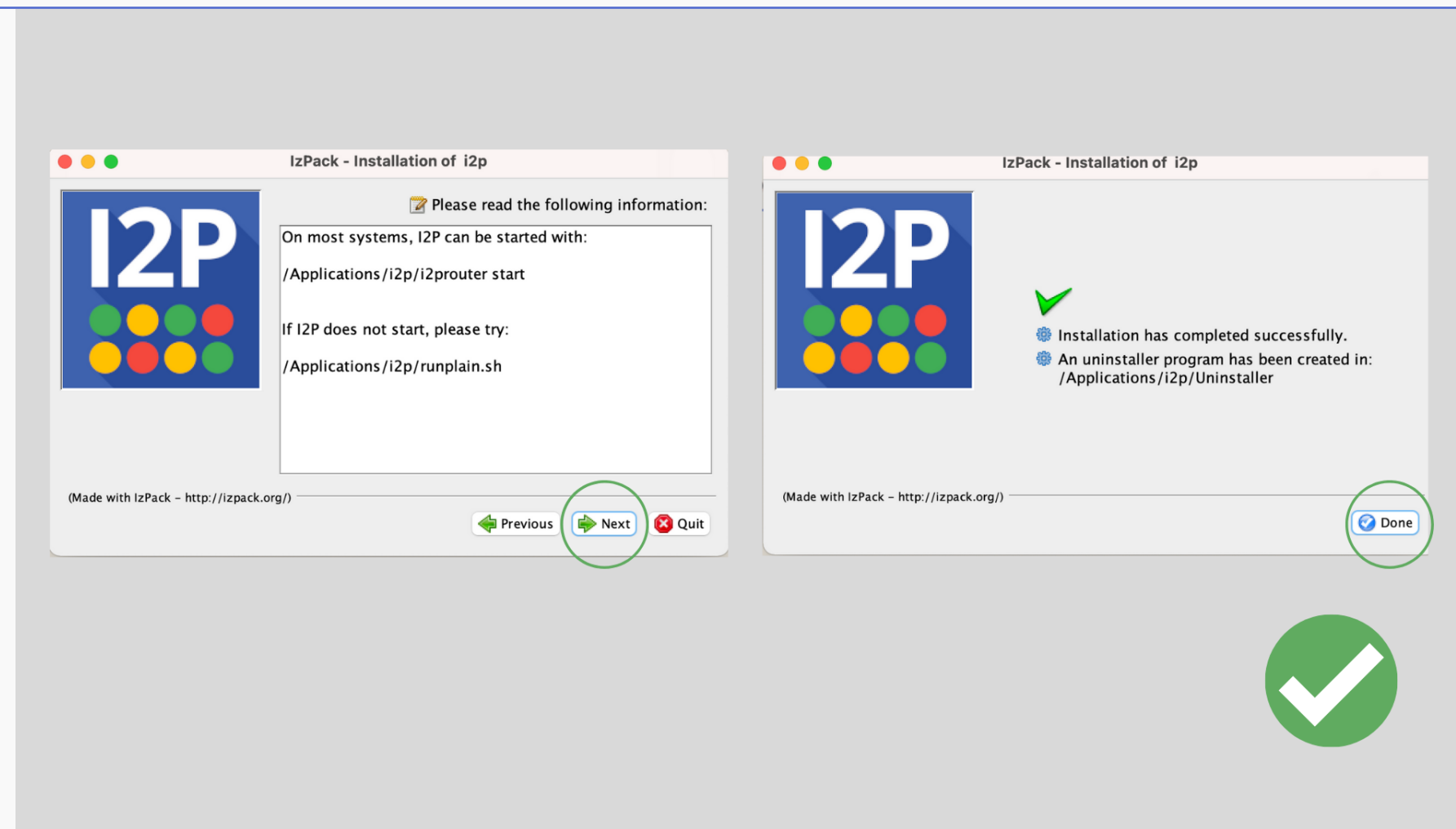
Tool Tip: Since the I2P software is not from the app store, Apple lets us know that. The message warns us that the developer is not known, but we can go ahead and click okay. The I2P software is open source, and we can see who maintains it and active development. Once we get comfortable, we might even want to help them out!



- 4 Follow the steps for installation.

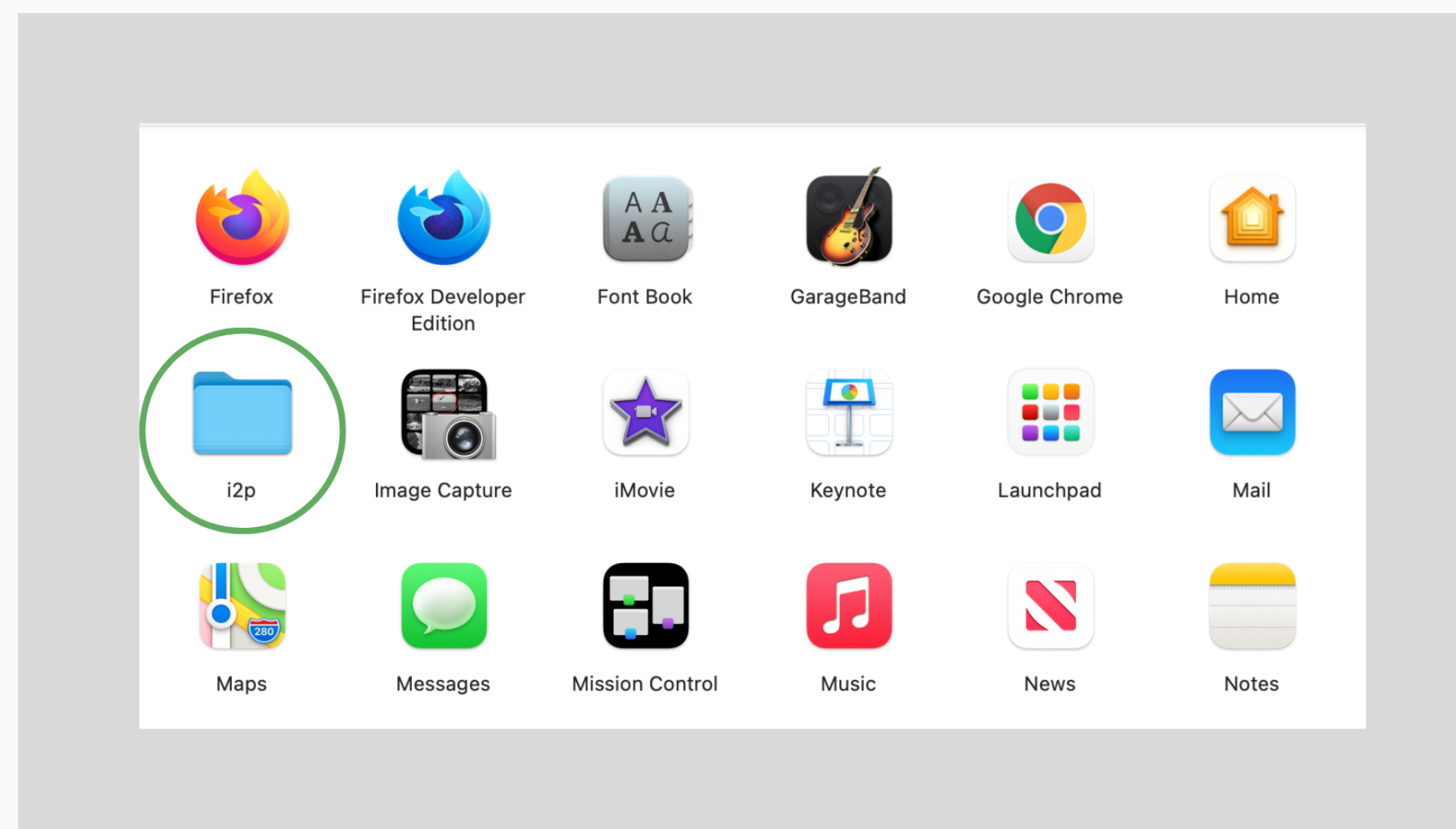


Installation
 I2P Installation
 Launching I2P
 Wizard Walk-through

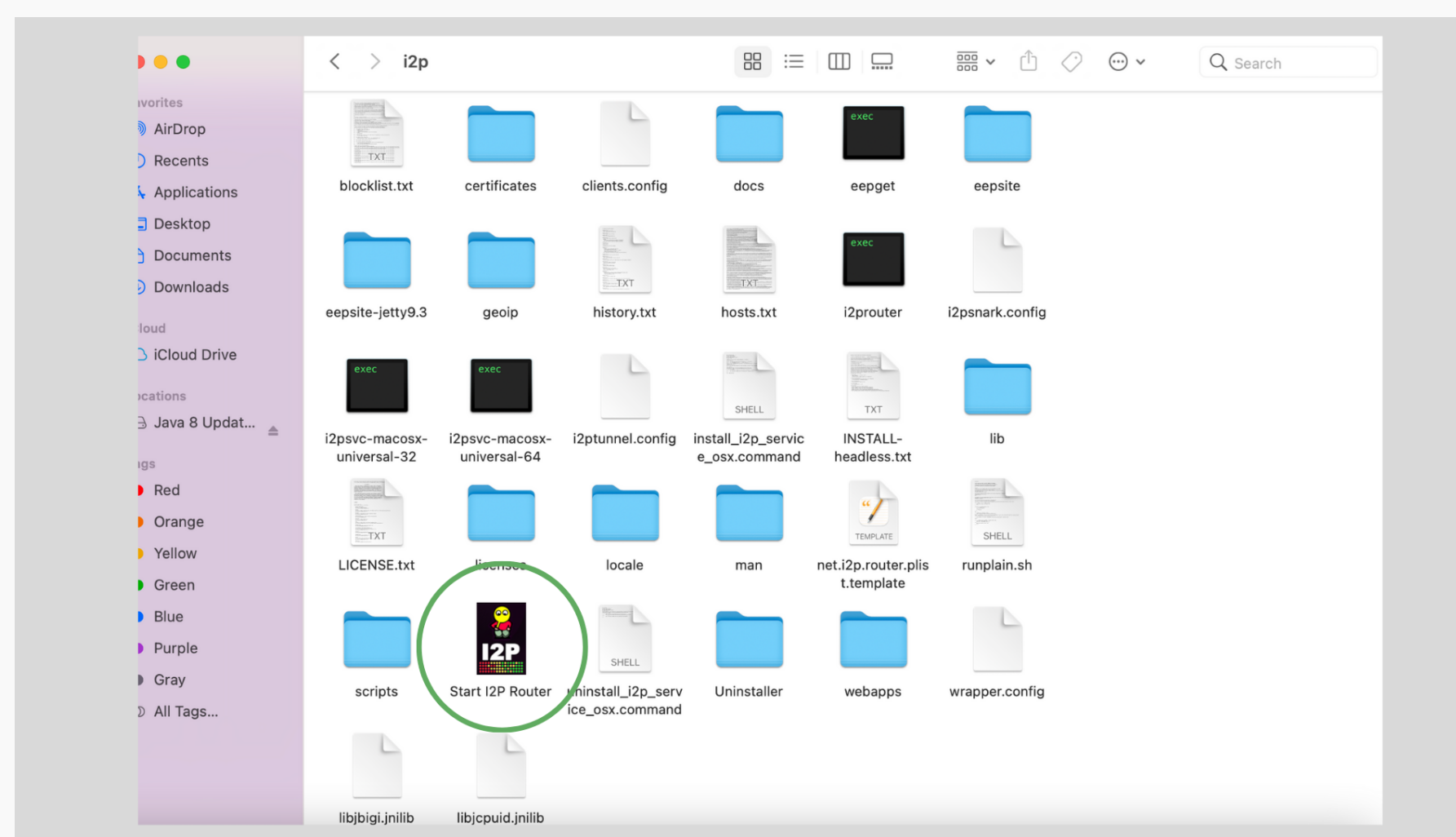


Launching I2P

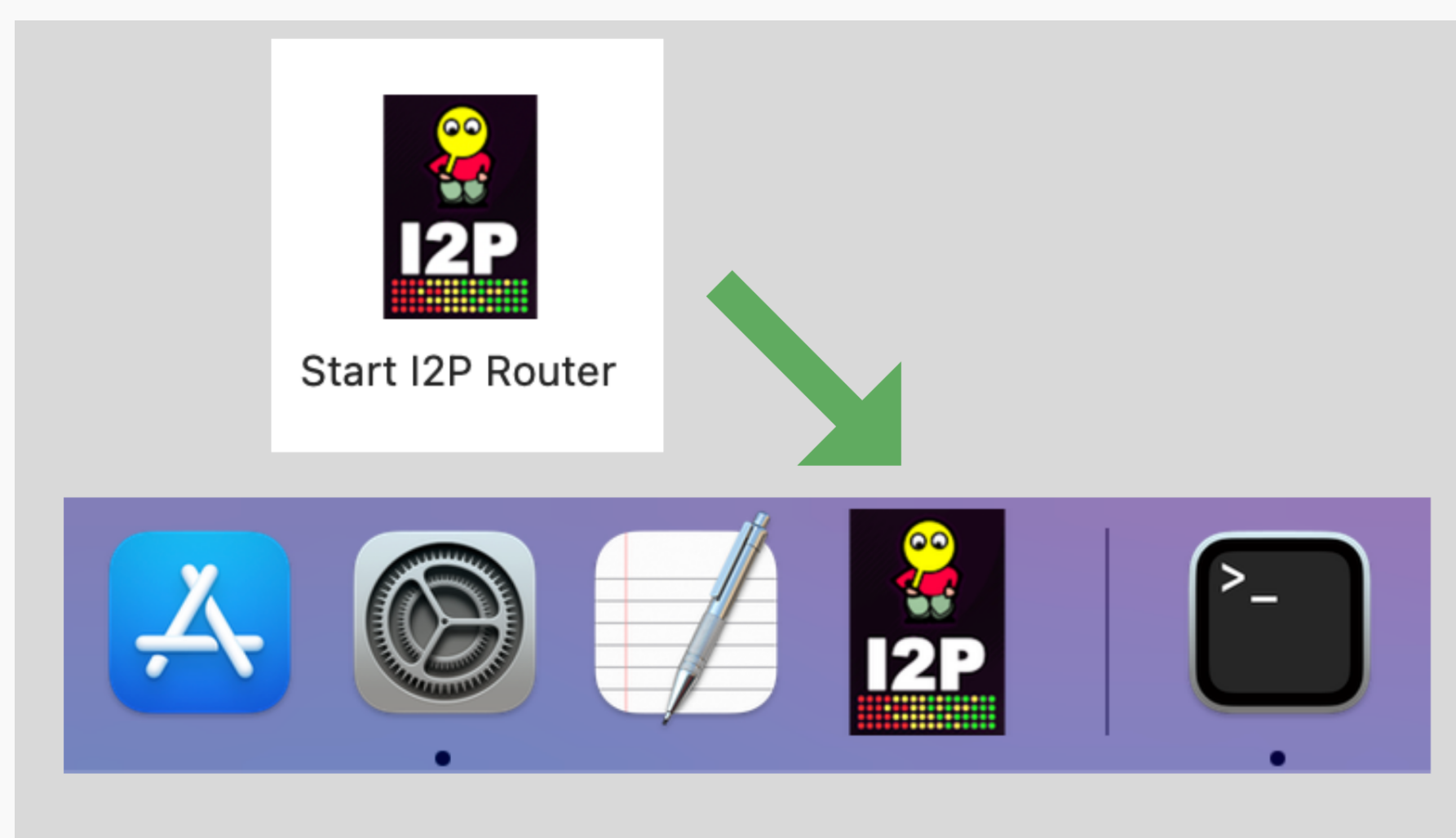
- 1 Go to Finder, and open your Applications to locate the I2P folder.



- 2 Go to Finder, and open your Applications to locate the I2P folder.

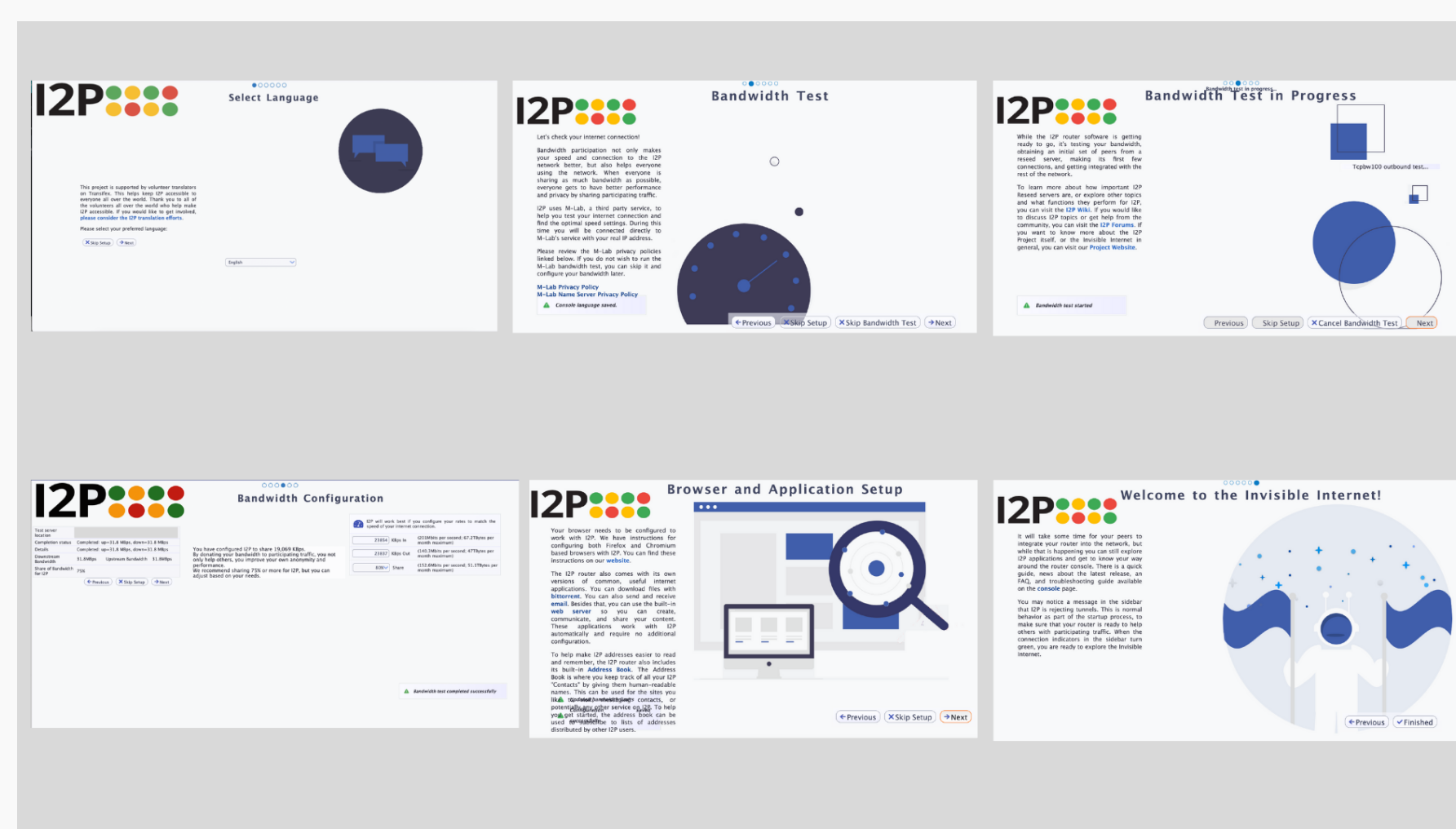


- 3 Go to Finder, and open your Applications to locate the I2P folder.

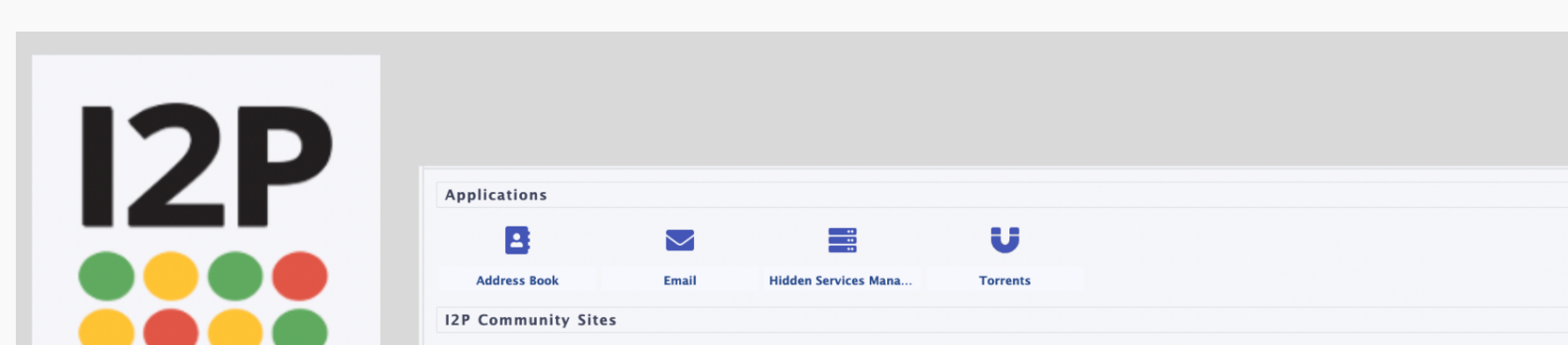


Wizard Walk-through

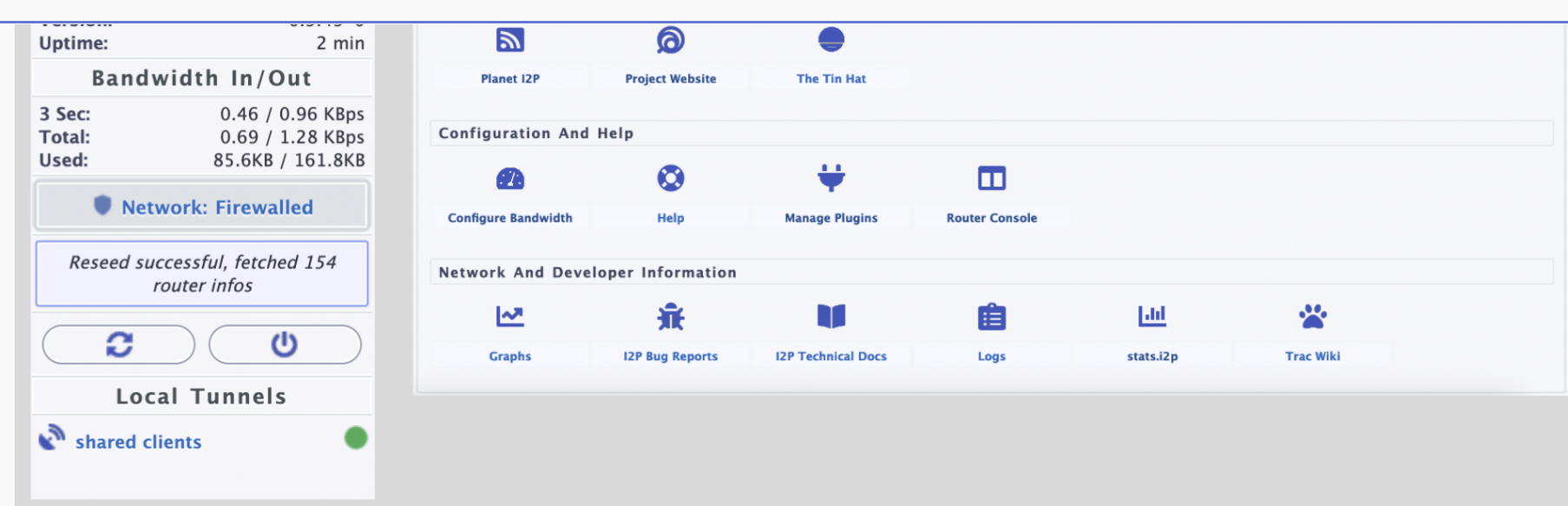
- 1 Go to Finder, and open your Applications to locate the I2P folder.



- 2 The router console will look like this:



Installation
I2P Installation
Launching I2P
Wizard Walk-through



You've completed the installation process! You must configure your browser in order to use I2P. Choose your browser below for instructions.

[Firefox](#)
[Chrome](#)

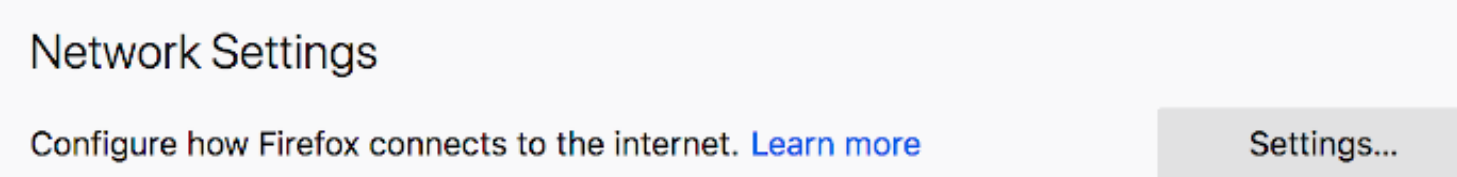
Configuration

- Firefox
- Chrome
- Internet Explorer

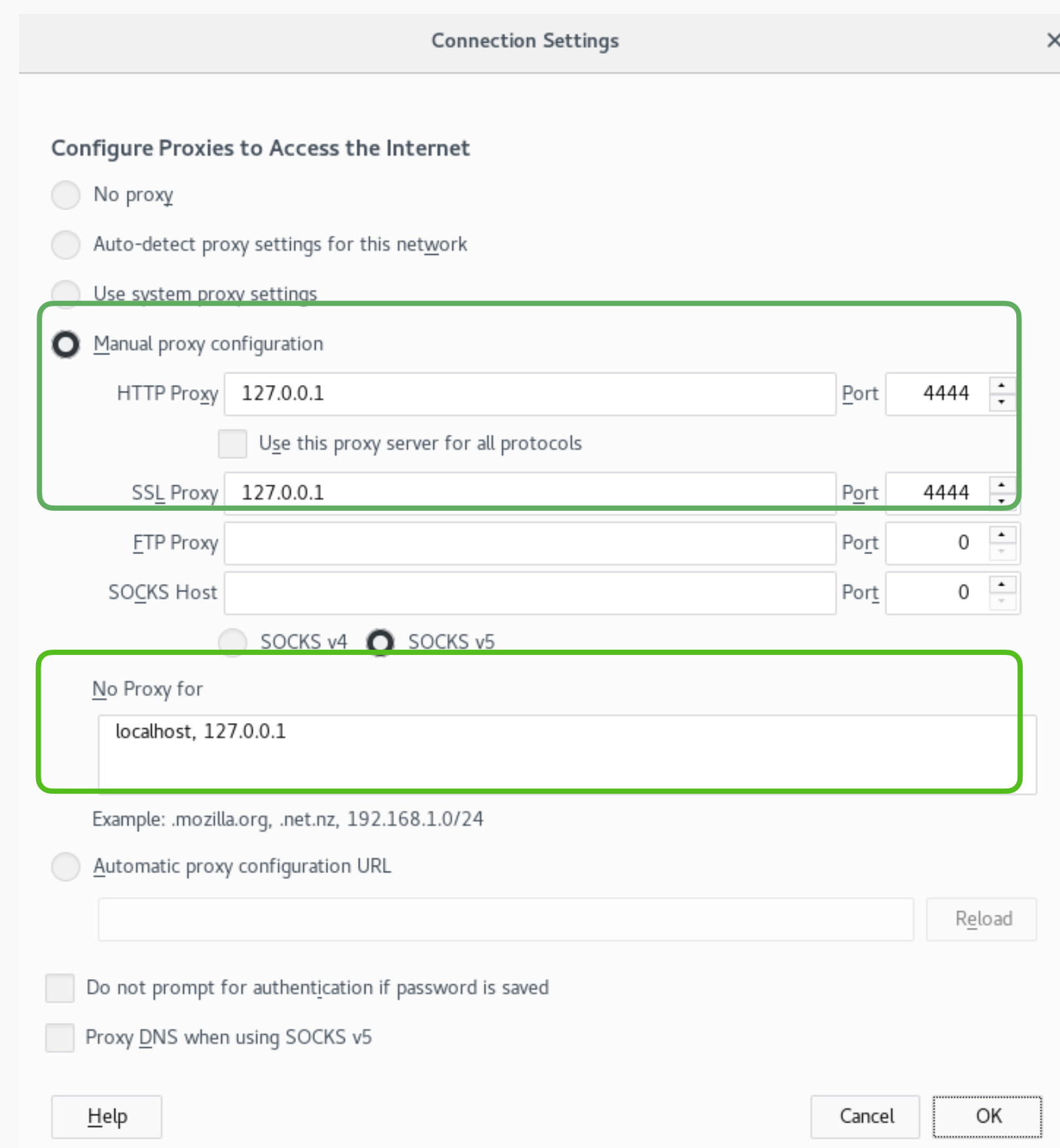
Configuring Your I2P Network Connections

Browser Configuration for Firefox 57 and above

- 1 From the Menu button in the top right, select *Preferences*. Scroll down until you see the *Network Proxy* section, as shown in the screenshot below. Click on *Settings*

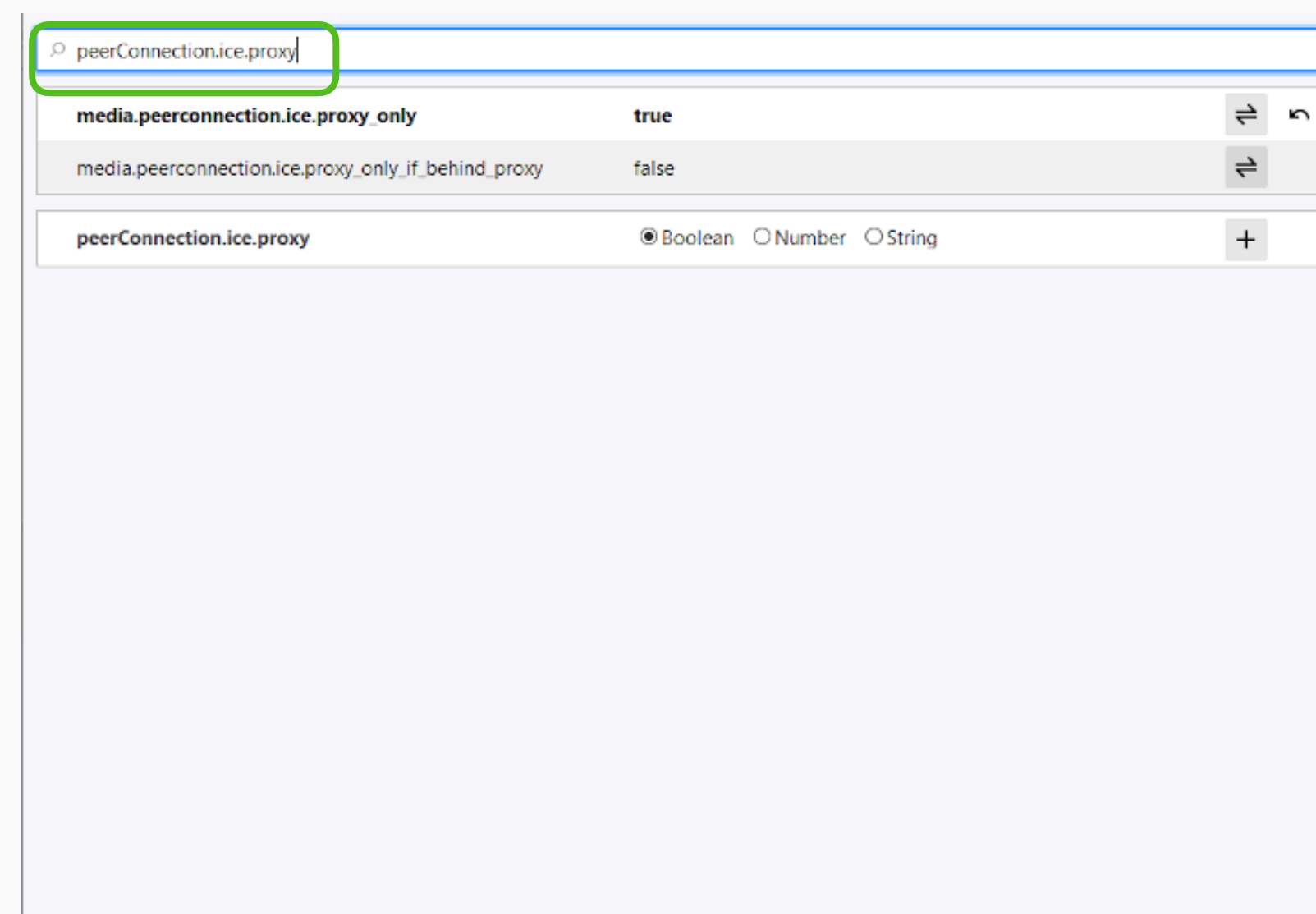


- 2 In the *Connection Settings* pop-up, select *Manual proxy configuration*. Set both the HTTP and SSL Proxy to address 127.0.0.1 with port 4444 as shown in the following screenshot.



New screenshots

- 3 Finally, go to the address *about:config* and find the property *media.peerConnection.ice.proxy_only*. Ensure that this setting is True.



Tool tip for warning

You've completed the configuration and all required steps for I2P Installation!

- What's Next?
- [Get to Know I2P Software](#)
 - [Get Involved and Contribute](#)

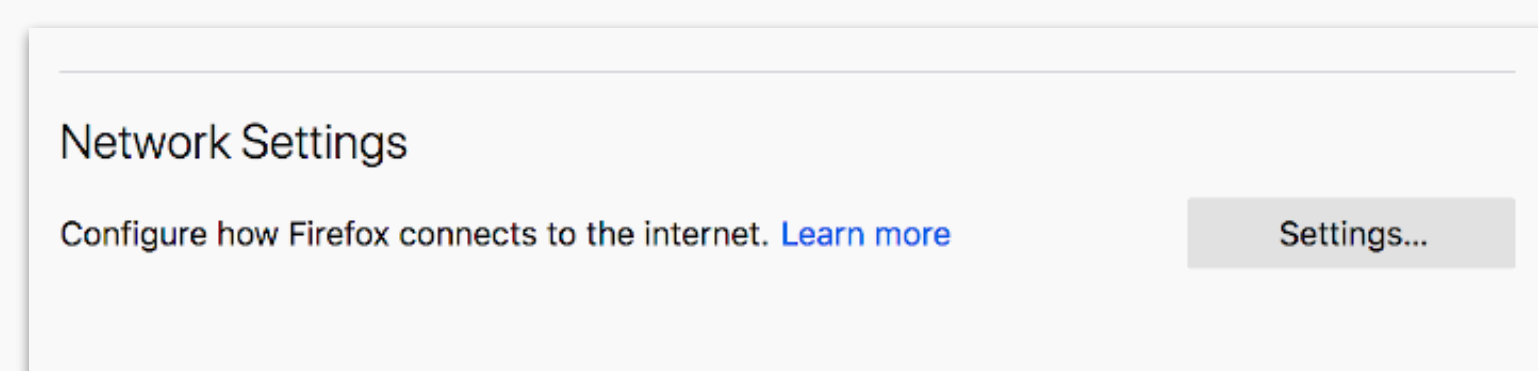
Configuration

Firefox
Chrome
Internet Explorer

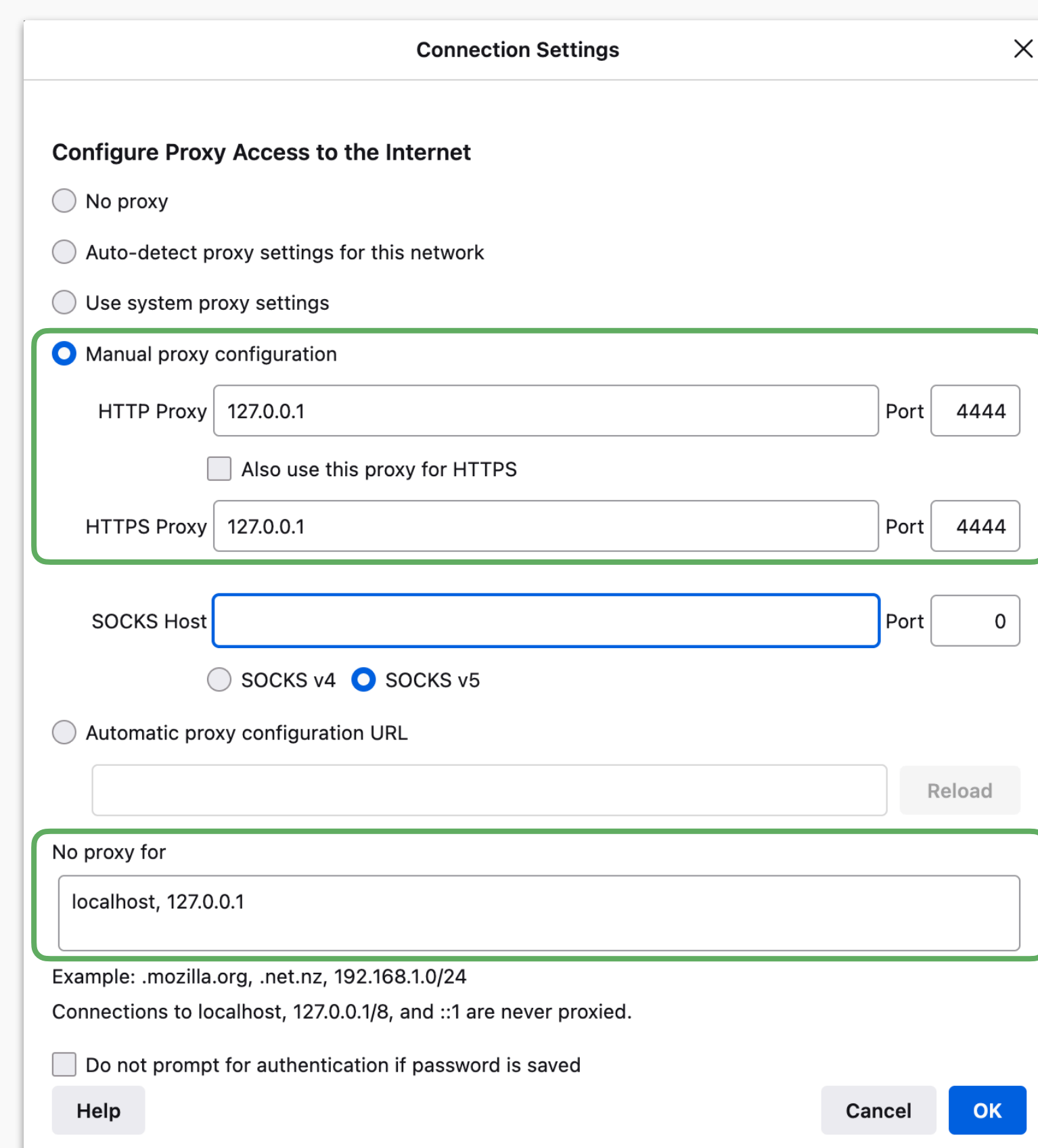
Configuring Your I2P Network Connections

Browser Configuration for Firefox 57 and above

- 1 From the Menu button in the top right, select *Preferences*. Scroll down until you see the *Network Proxy* section, as shown in the screenshot below. Click on *Settings*

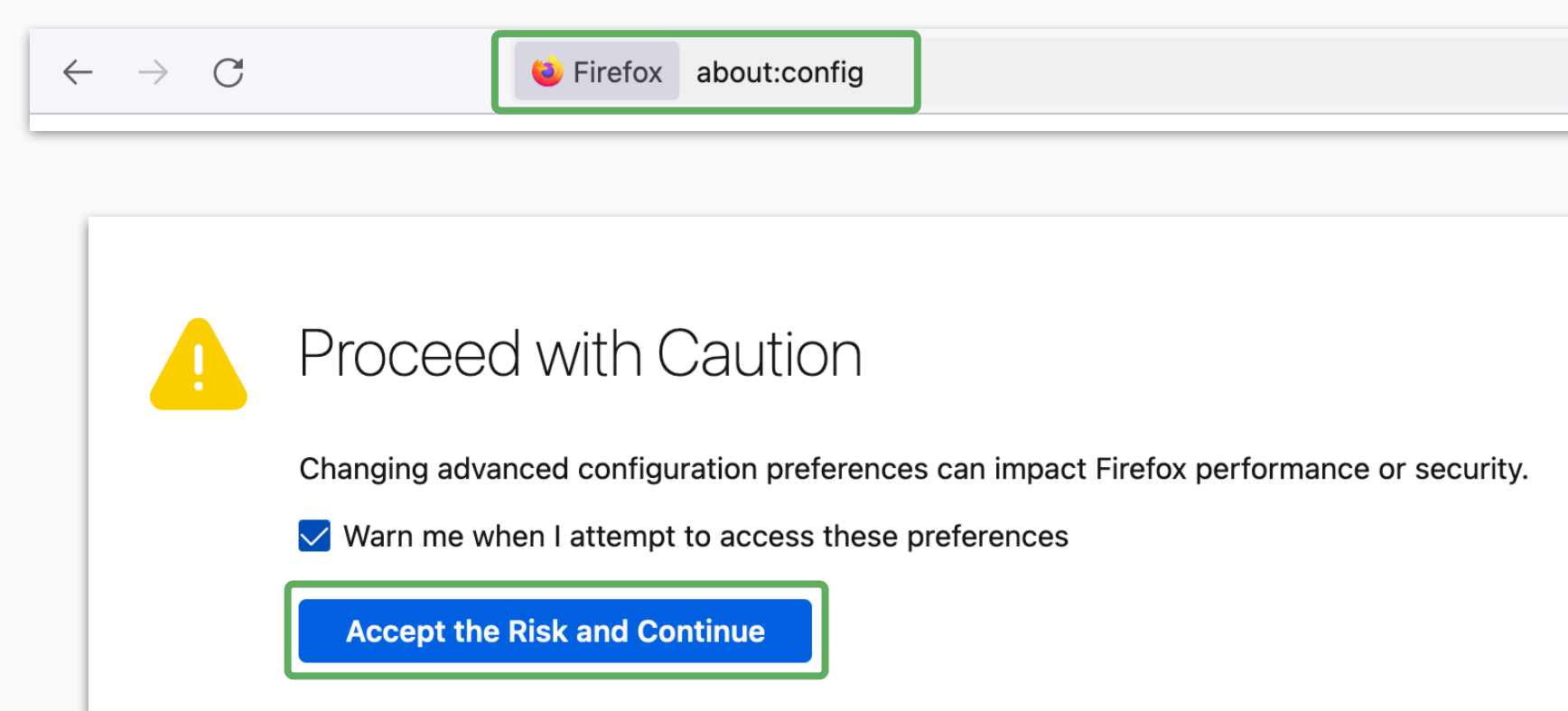


- 2 In the *Connection Settings* pop-up, select *Manual proxy configuration*. Set both the HTTP and SSL Proxy to address 127.0.0.1 with port 4444 as shown in the following screenshot.

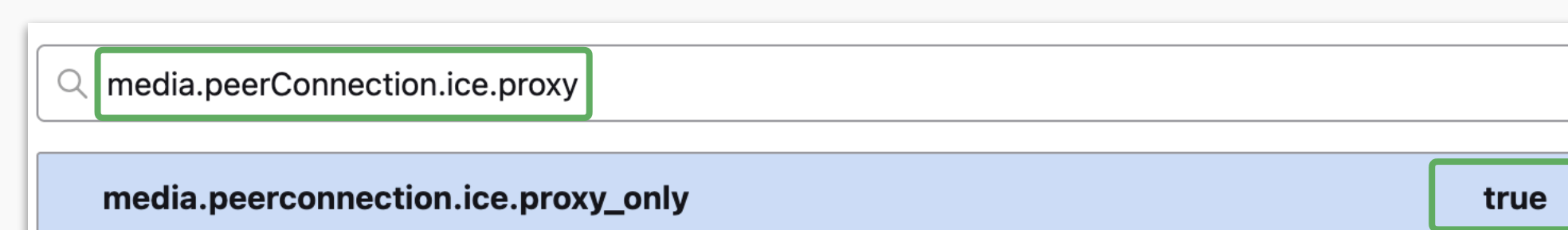


- 3 Finally, go to the address *about:config*

Tool Tip: You will get a *Proceed with Caution* warning when you go to this address. That is okay. Click *Accept*.



- 4 Find the property *media.peerConnection.ice.proxy_only*. Ensure that this setting is True.



You've completed the configuration and all required steps for I2P Installation!

What's Next?

[An Intro to I2P Software](#)

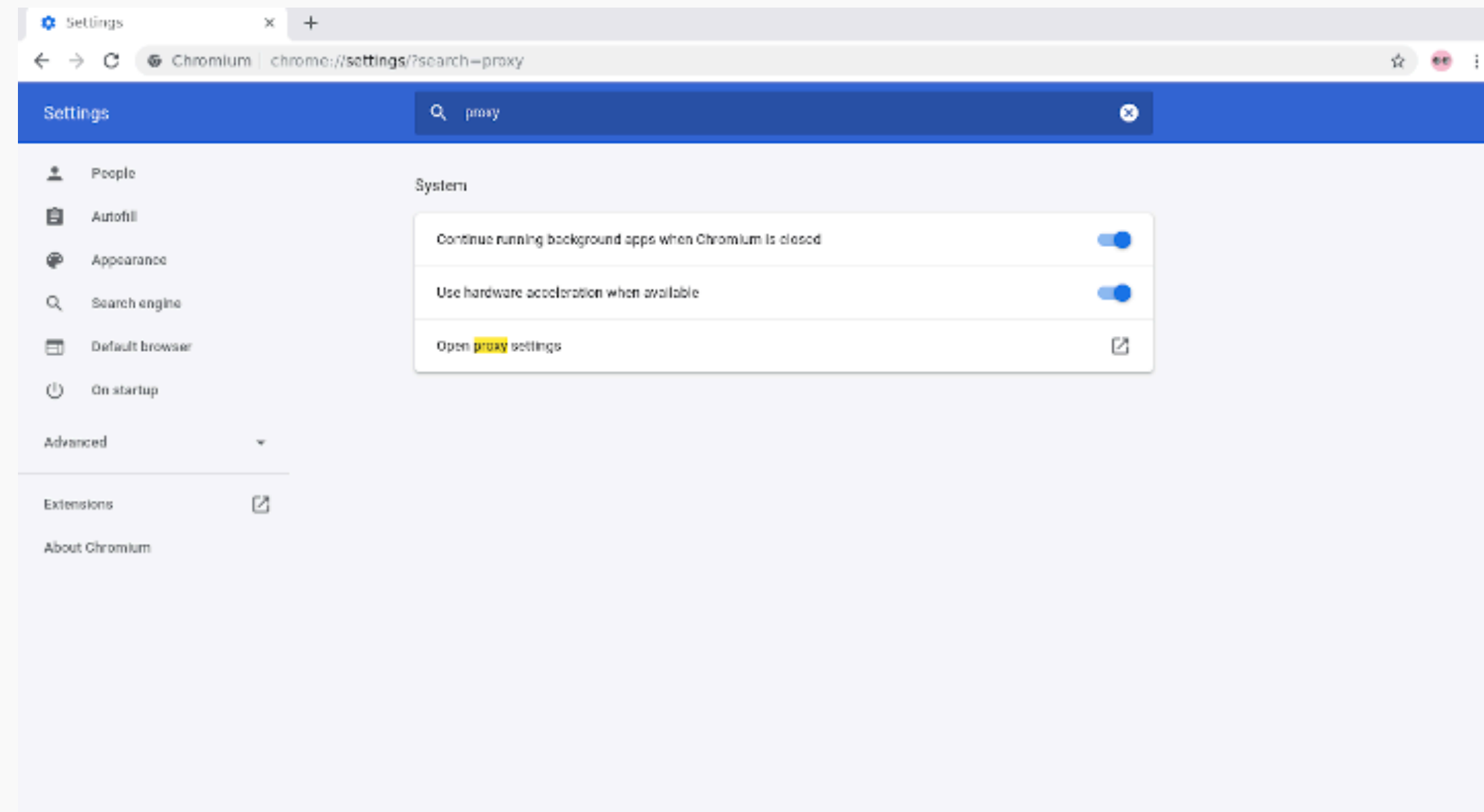
[Get Involved and Contribute](#)

ConfigurationFirefox
Chrome
Internet Explorer

Configuring Your I2P Network Connections

Browser Configuration for Chrome

- 1 Chromium-Based Browsers like Chrome have slightly different places for their proxy settings depending on variant and platform. These instructions may be slightly different in Brave or Iridium, for instance. From the *Main* menu, navigate to the *Settings*, and search for the menu item. Clicking it will open the right settings for your platform.

Idk will think about
Chrome. Browser ext is
preferred (put on top)

New screenshots

Re-do the steps?

Experimental, Extension-Based Configuration

- 1 An experimental, partially-automated configuration process for Chrome is available. In order to configure it, create a new *Profile* especially for your I2P browsing, separate from the default profile. Then install this *Extension* in your newly-created profile. This profile is now configured to use I2P. Highly detailed instructions are available at the homepage.

You've completed the configuration and all required steps for I2P Installation!

What's Next?

[Get to Know I2P Software](#)

[Get Involved and Contribute](#)