



Performance



Accessibility



Best Practices



SEO



Progressive Web App



- Print Summary
- Print Expanded
- Copy JSON
- Save as HTML
- Save as JSON
- Open in Viewer
- Toggle Dark Theme

There were issues affecting this run of Lighthouse:

- Chrome extensions negatively affected this page's load performance. Try auditing the page in incognito mode or from a Chrome profile without extensions.



Performance

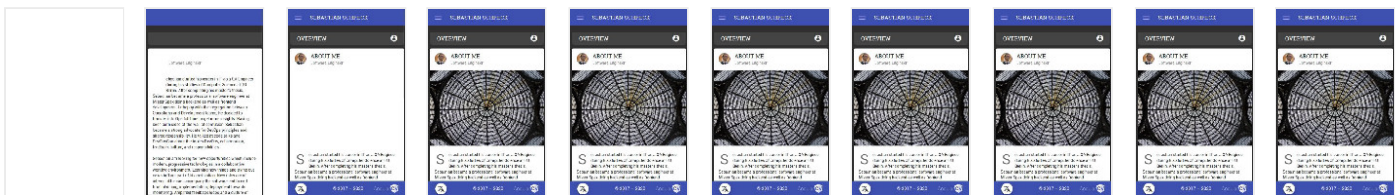
Metrics



▲ First Contentful Paint	7.4 s	▲ First Meaningful Paint	7.5 s
▲ Speed Index	7.4 s	▲ First CPU Idle	7.8 s
▲ Time to Interactive	9.2 s	▲ Max Potential First Input Delay	280 ms

[View Trace](#)

Values are estimated and may vary. The performance score is based only on these metrics.



Opportunities — These suggestions can help your page load faster. They don't directly affect the Performance score.

Opportunity	Estimated Savings
▲ Preload key requests	12.75 s
▲ Properly size images	9.3 s
Eliminate render-blocking resources	0.75 s
Remove unused CSS	0.6 s

Diagnostics — More information about the performance of your application. These numbers don't directly affect the Performance score.

- ▲ Serve static assets with an efficient cache policy — 11 resources found
- ▲ Ensure text remains visible during webfont load
- ▲ Avoid enormous network payloads — Total size was 4,736 KB
- Minimize main-thread work — 2.4 s
- Avoid chaining critical requests — 6 chains found
- User Timing marks and measures — 28 user timings
- Keep request counts low and transfer sizes small — 12 requests • 4,736 KB
- Passed audits (13)



Accessibility

These checks highlight opportunities to [improve the accessibility of your web app](#). Only a subset of accessibility issues can be automatically detected so manual testing is also encouraged.

Names and labels — These are opportunities to improve the semantics of the controls in your application. This may enhance the experience for users of assistive technology, like a screen reader.

- ▲ Buttons do not have an accessible name

Navigation — These are opportunities to improve keyboard navigation in your application.

- ▲ The page does not contain a heading, skip link, or landmark region

Additional items to manually check (11) — These items address areas which an automated testing tool cannot cover. Learn more in our guide on [conducting an accessibility review](#).

Passed audits (16)

Not applicable (17)



Best Practices

Passed audits (15)



SEO

These checks ensure that your page is optimized for search engine results ranking. There are additional factors Lighthouse does not check that may affect your search ranking. [Learn more.](#)

Content Best Practices — Format your HTML in a way that enables crawlers to better understand your app's content.

▲ Document does not have a meta description

Crawling and Indexing — To appear in search results, crawlers need access to your app.

▲ robots.txt is not valid — 30 errors found

Additional items to manually check (1) — Run these additional validators on your site to check additional SEO best practices.

Passed audits (10)

Not applicable (1)



Progressive Web App

These checks validate the aspects of a Progressive Web App. [Learn more.](#)

Fast and reliable

Page load is fast enough on mobile networks

▲ Current page does not respond with a 200 when offline

▲ start_url does not respond with a 200 when offline **No usable web app manifest found on page.**

Installable

Uses HTTPS

▲ Does not register a service worker that controls page and start_url

▲ Web app manifest does not meet the installability requirements **Failures: No manifest was fetched.**

PWA Optimized

Redirects HTTP traffic to HTTPS

▲ Is not configured for a custom splash screen **Failures: No manifest was fetched.**

- ▲ Does not set a theme color for the address bar.
Failures: No manifest was fetched, No ` - Content is sized correctly for the viewport ✓
 - Has a `<meta name="viewport">` tag with width or initial-scale ✓
 - Does not provide fallback content when JavaScript is not available
▲ The page body should render some content if its scripts are not available. ✓
 - ▲ Does not provide a valid apple-touch-icon ✓
- Additional items to manually check (3)** — These checks are required by the baseline [PWA Checklist](#) but are not automatically checked by Lighthouse. They do not affect your score but it's important that you verify them manually. ✓

Runtime Settings

URL	https://cv.schreck.berlin/overview
Fetch time	Apr 26, 2020, 12:35 PM GMT+2
Device	Emulated Nexus 5X
Network throttling	150 ms TCP RTT, 1,638.4 Kbps throughput (Simulated)
CPU throttling	4x slowdown (Simulated)
User agent (host)	Mozilla/5.0 (X11; Linux x86_64) AppleWebKit/537.36 (KHTML, like Gecko) Chrome/81.0.4044.113 Safari/537.36
User agent (network)	Mozilla/5.0 (Linux; Android 6.0.1; Nexus 5 Build/MRA58N) AppleWebKit/537.36 (KHTML, like Gecko) Chrome/74.0.3694.0 Mobile Safari/537.36 Chrome-Lighthouse
CPU/Memory Power	1264

Generated by **Lighthouse** 5.7.0 | [File an issue](#)