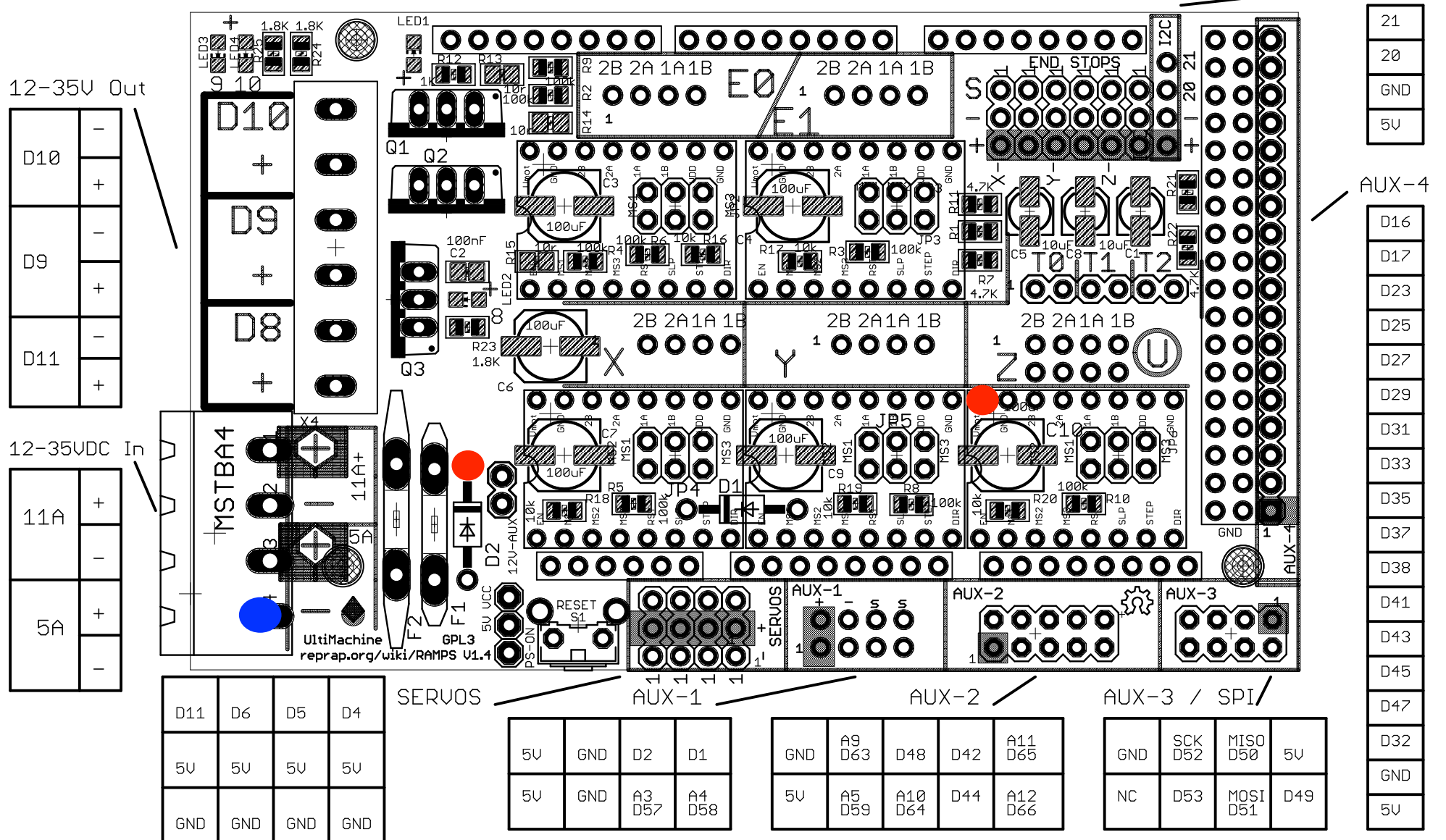


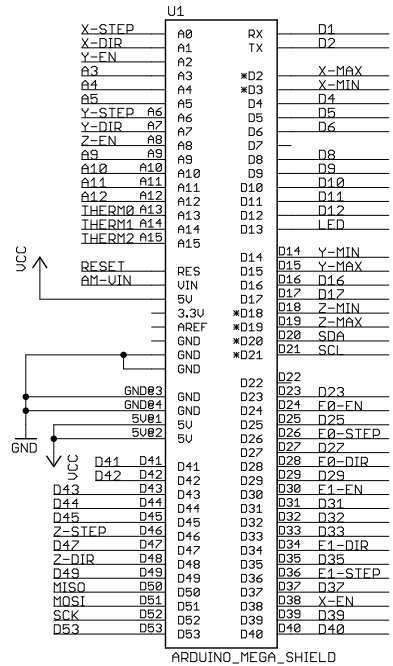
RAMPS 1.4 (RepRap Arduino MEGA Pololu Shield)

GPL v3

Reversing input power, and inserting stepper drivers incorrectly will destroy electronics.



MEGA Conn.



RAMPS 1.4 (RepRap Arduino Mega Pololu Shield)

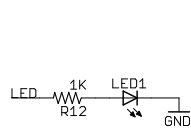
reprap.org/wiki/RAMPS1.4

Copyright 2011 Johnny Russell

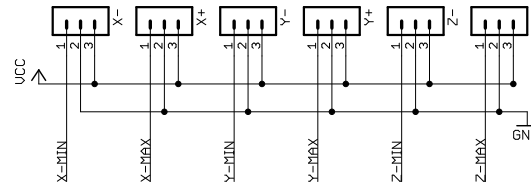
UltiMachine

GPL v3

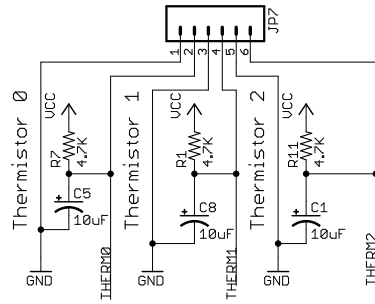
LED



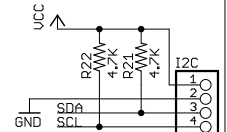
Endstops



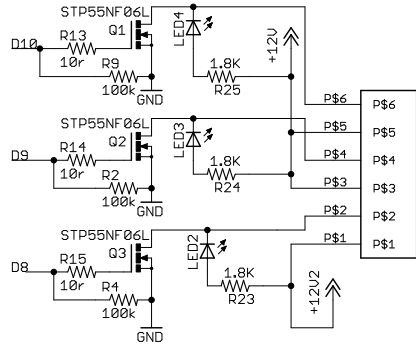
Thermistors



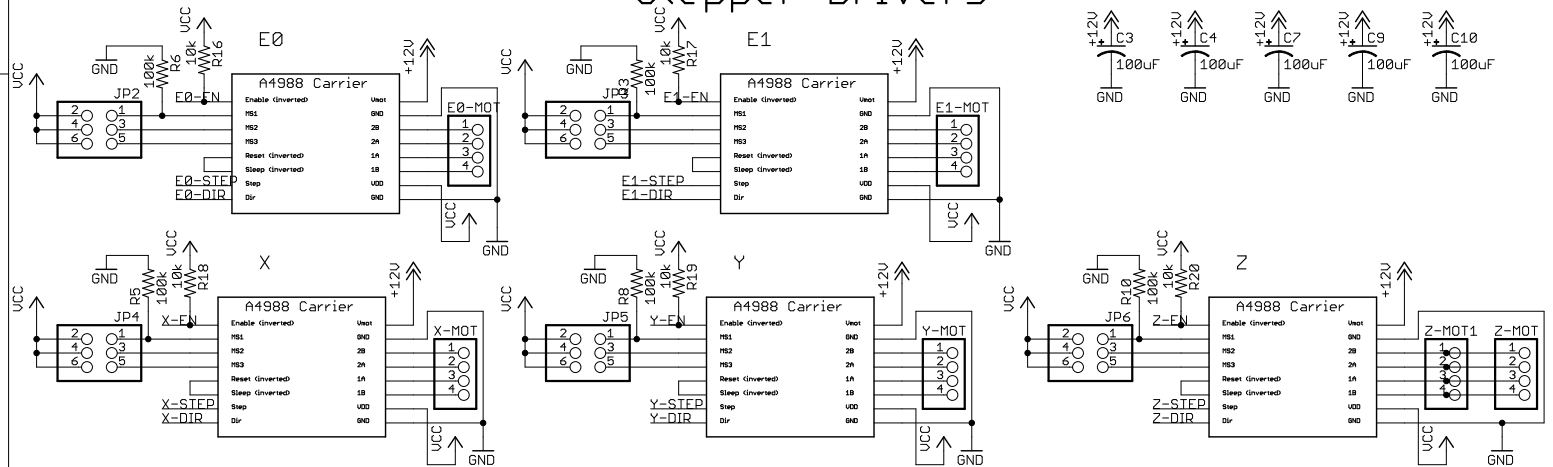
I2C



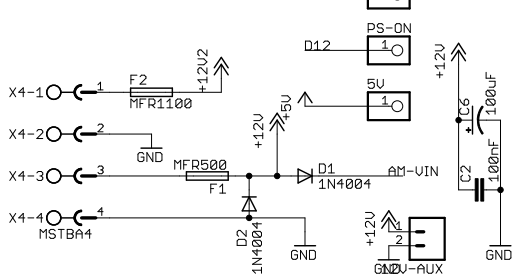
Heaters & Fans



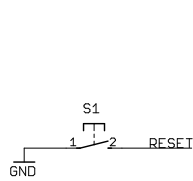
Stepper Drivers



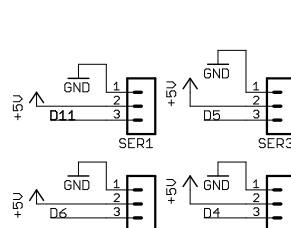
Power



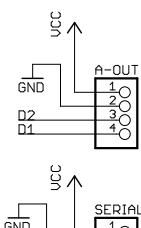
Reset



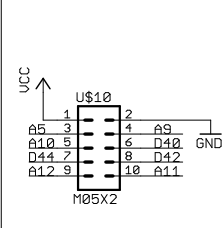
Servos



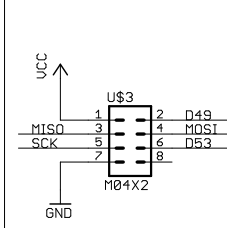
AUX-1



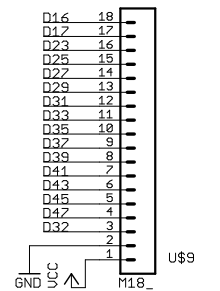
AUX-2



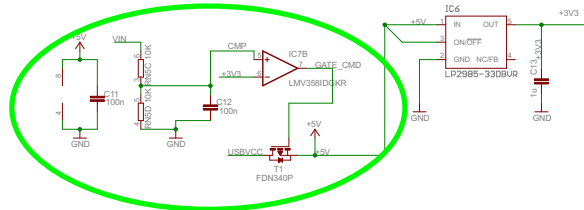
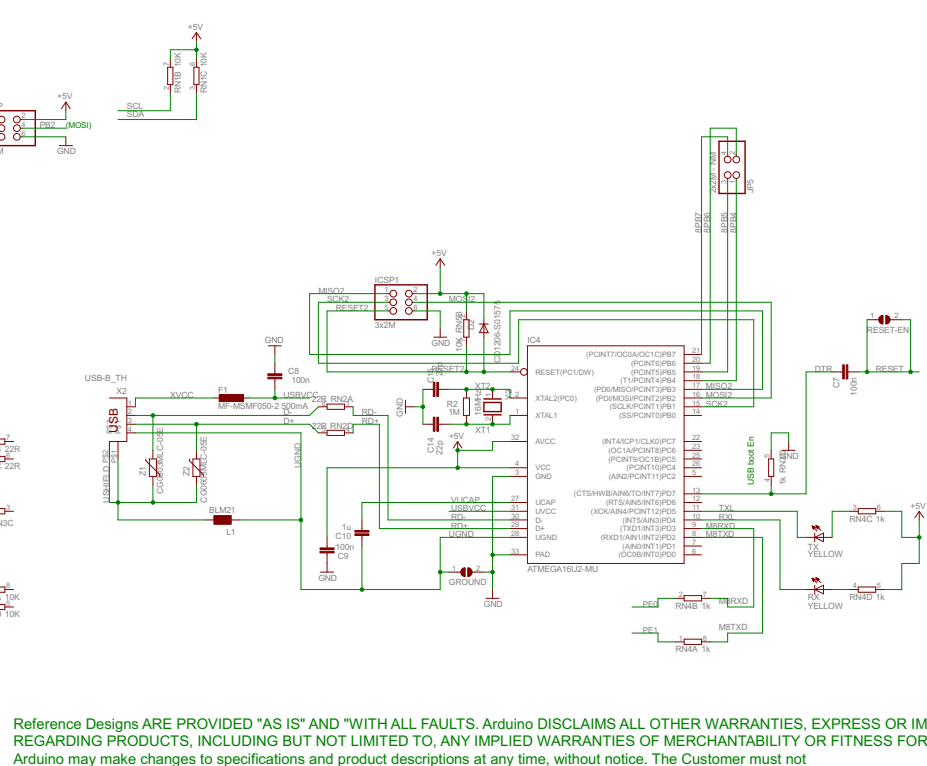
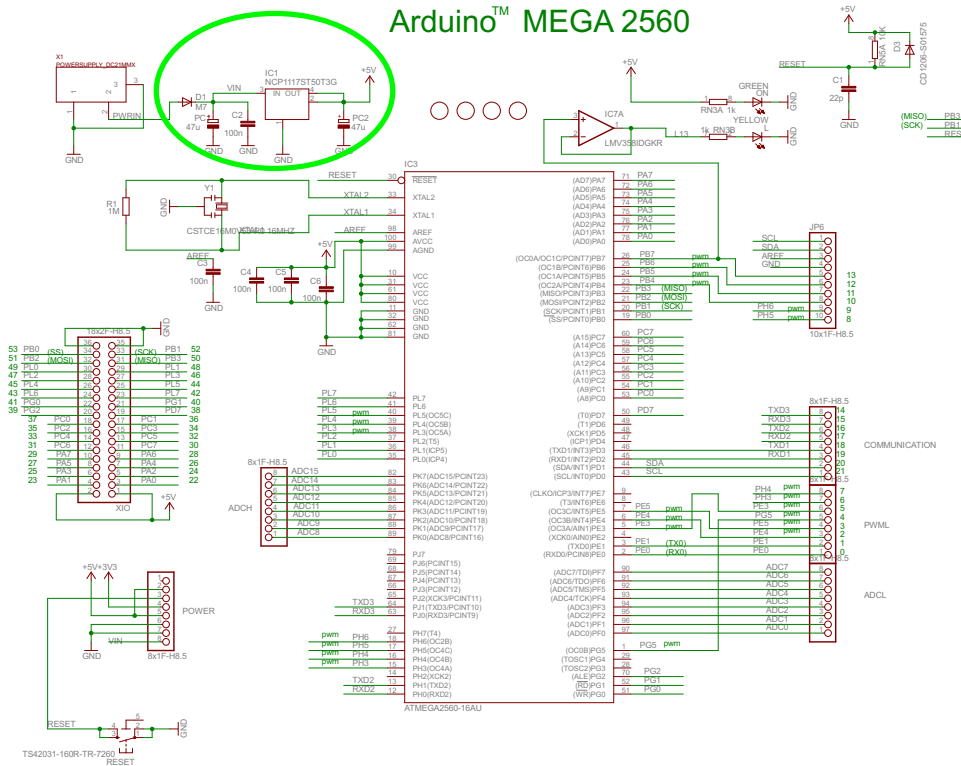
AUX-3



AUX-4



Arduino™ MEGA 2560

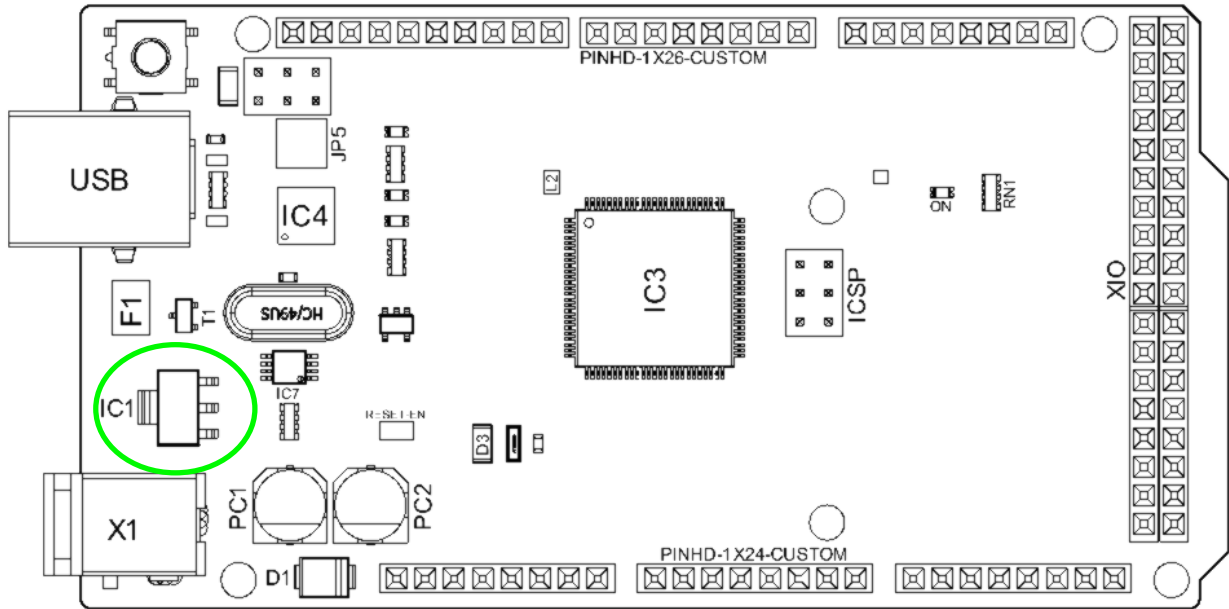


Reference Designs ARE PROVIDED "AS IS" AND "WITH ALL FAULTS. Arduino DISCLAIMS ALL OTHER WARRANTIES, EXPRESS OR IMPLIED, REGARDING PRODUCTS, INCLUDING BUT NOT LIMITED TO, ANY IMPLIED WARRANTIES OF MERCHANTABILITY OR FITNESS FOR A PARTICULAR PURPOSE. Arduino may make changes to specifications and product descriptions at any time, without notice. The Customer must not rely on the absence or characteristics of any features or instructions marked "reserved" or "undefined." Arduino reserves these for future definition and shall have no responsibility whatsoever for conflicts or incompatibilities arising from future changes to them. The product information on the Web Site or Materials is subject to change without notice. Do not finalize a design with this information. ARDUINO is a registered trademark.



3.2 Board Topology

Front View



Arduino MEGA Top View

Ref.	Description	Ref.	Description
USB	USB B Connector	F1	Chip Capacitor
IC1	5V Linear Regulator	X1	Power Jack Connector
JP5	Plated Holes	IC4	ATmega16U2 chip
PC1	Electrolytic Alumninum Capacitor	PC2	Electrolytic Alumninum Capacitor
D1	General Purpose Rectifier	D3	General Purpose Diode
L2	Fixed Inductor	IC3	ATmega2560 chip
ICSP	Connector Header	ON	Green LED
RN1	Resistor Array	XIO	Connector