

## Please show 7 weights

This is the basic building block of our illustrations.

This is the building block X 4

## 7 weights wide, 4 widths deep

See Text: "in the example of Amstelvar, with respect for the design, the default is as wide as it gets, and the width axis only gets narrower.

FIGURE 1



FIGURE 2

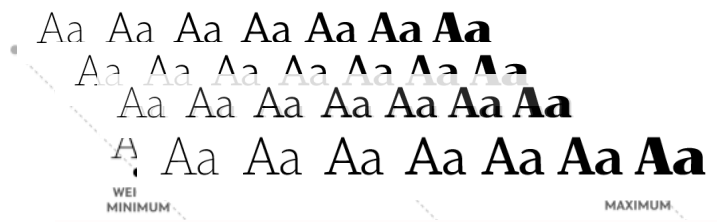


FIGURE 3

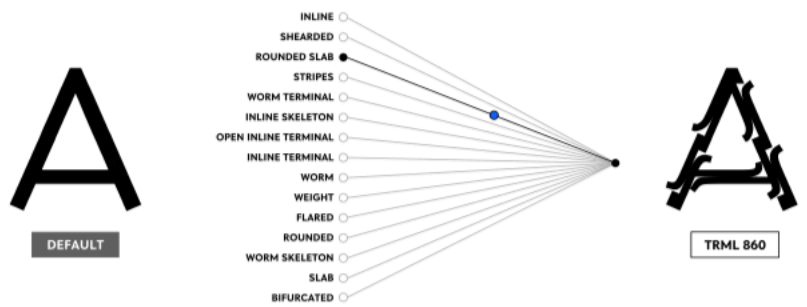
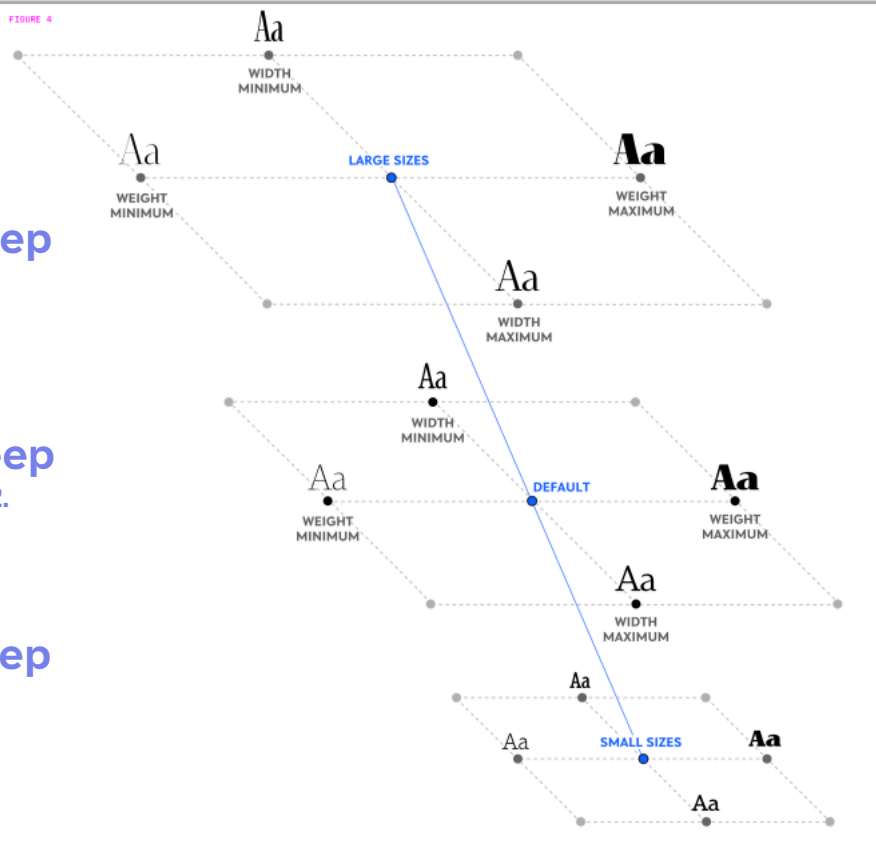


FIGURE 4



Move to fig 5

new fig. 3

7 weights, 7 widths deep

This needs to be the building block X 7,

7 weights, 4 widths deep

This needs to be the building from fig 2. block X 4, repeated smaller

5 weights, 3 widths deep

This needs to be the building block -2 weight instances X 3, smaller

When figs 1-3 are done, we can use some of fig 3 as a background for fig. four. I'll demonstrate then.

thanks.