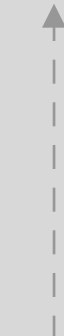


These are the latest figures from Clair

2b ...Goes Here

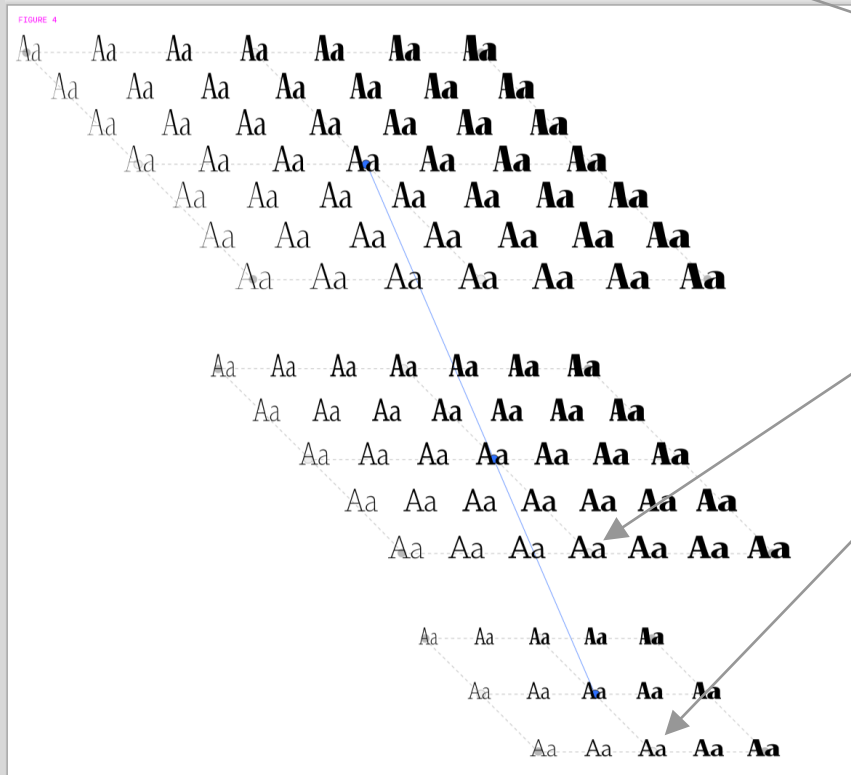
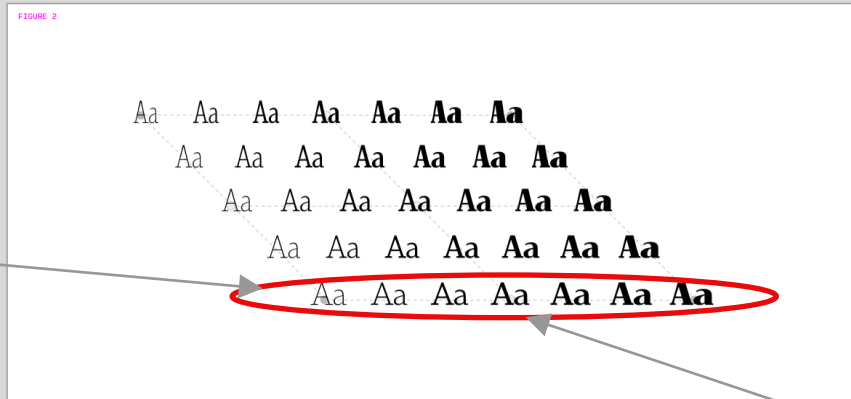
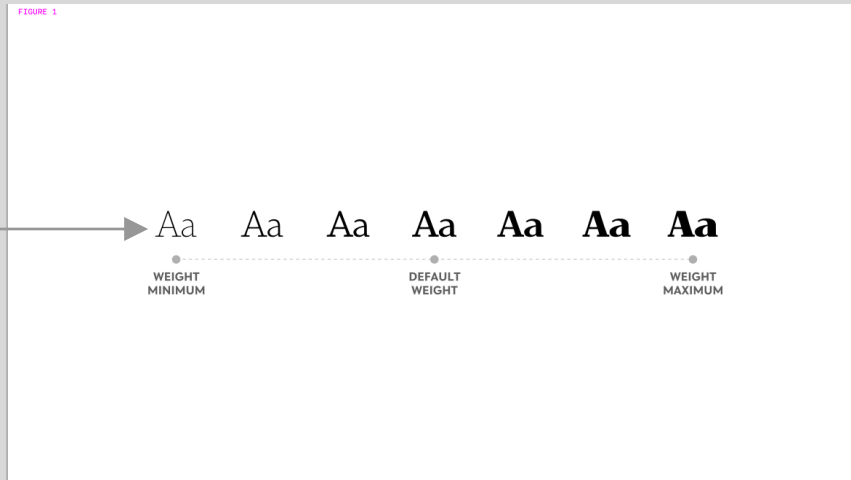


2a The final version of this line, dots and axis line... Aa in right place for dots, labels for default, and weight max/min...

These are the correct instances and style density.

Please copy from Claire's file?

Just these across are the correct labels for fig 1.



3 This is just to show the correct alignment of all "Aa" that fall near a Dot.



1 This is what the content says about the width axis of Amstelvar

"Or in the example of Amstelvar, with respect for the design, the default is as wide as it gets, and the width axis only gets narrower. (Fig 02)

This is the default for these images.

4 All these have the correct labels for each opsz shown in figs 2 and 3. that's all that's being exemplified here, not the styles shown.

