

10+3 min.



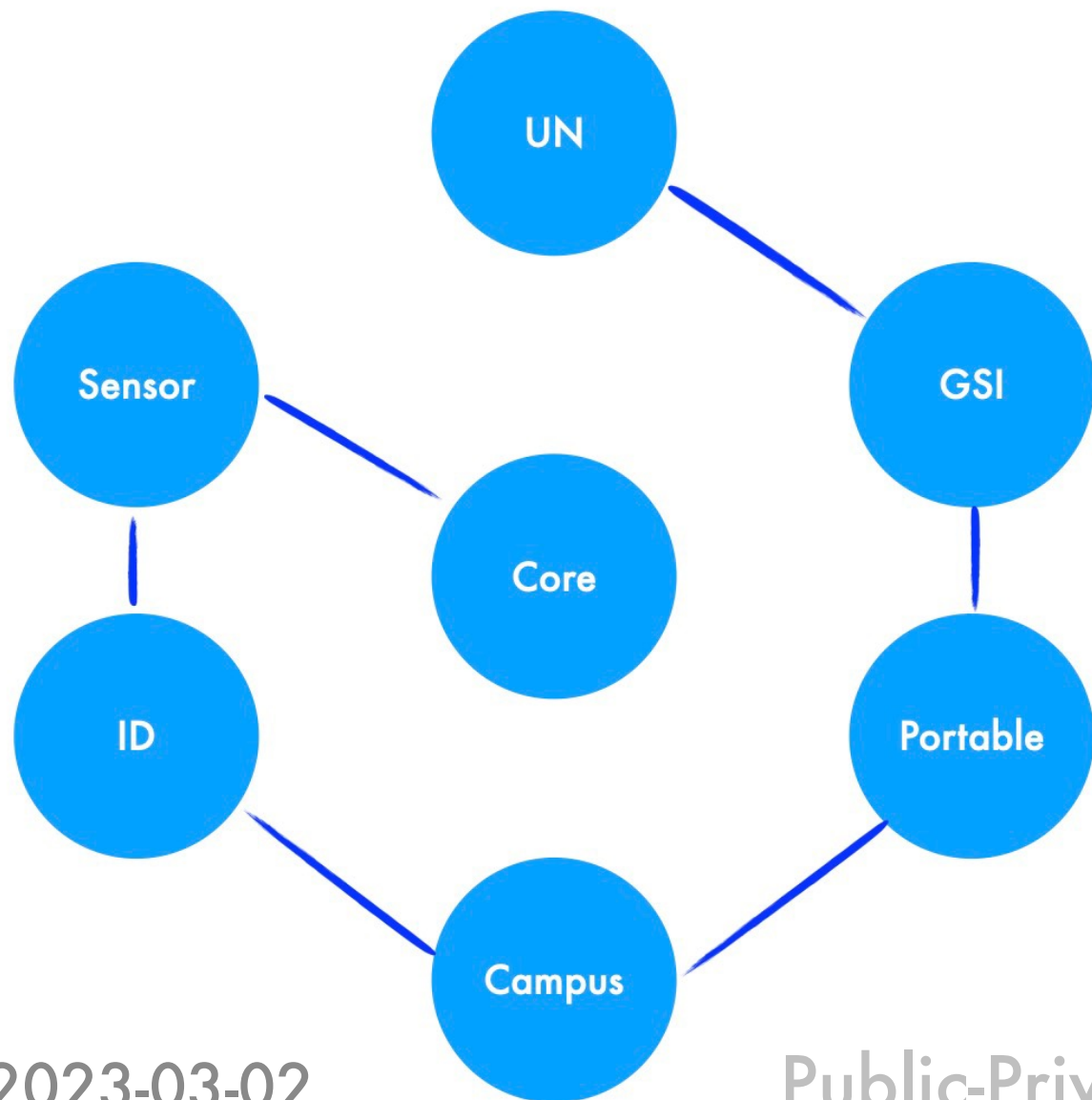
Smart Maps for the UN and for All

Hidenori

Chair, UN Open GIS Smart Maps Domain Working Group
Geospatial Information Authority of Japan

2023-03-02

Smart Maps Participants



Lead Contributors:

- Hidenori Fujimura (GSI)
- Diego Gonzalez Ferreiro (UNGSC)
- Taro Ubukawa (UNGIS)
- Taichi Furuhashi (Aoyama Gakuin)
- Santosh Gaikwad (Nascent)
- Takayuki Miyauchi (Geolonia)
- Taro Matsuzawa (OSGeo.JP)

Smart Maps Deliverables

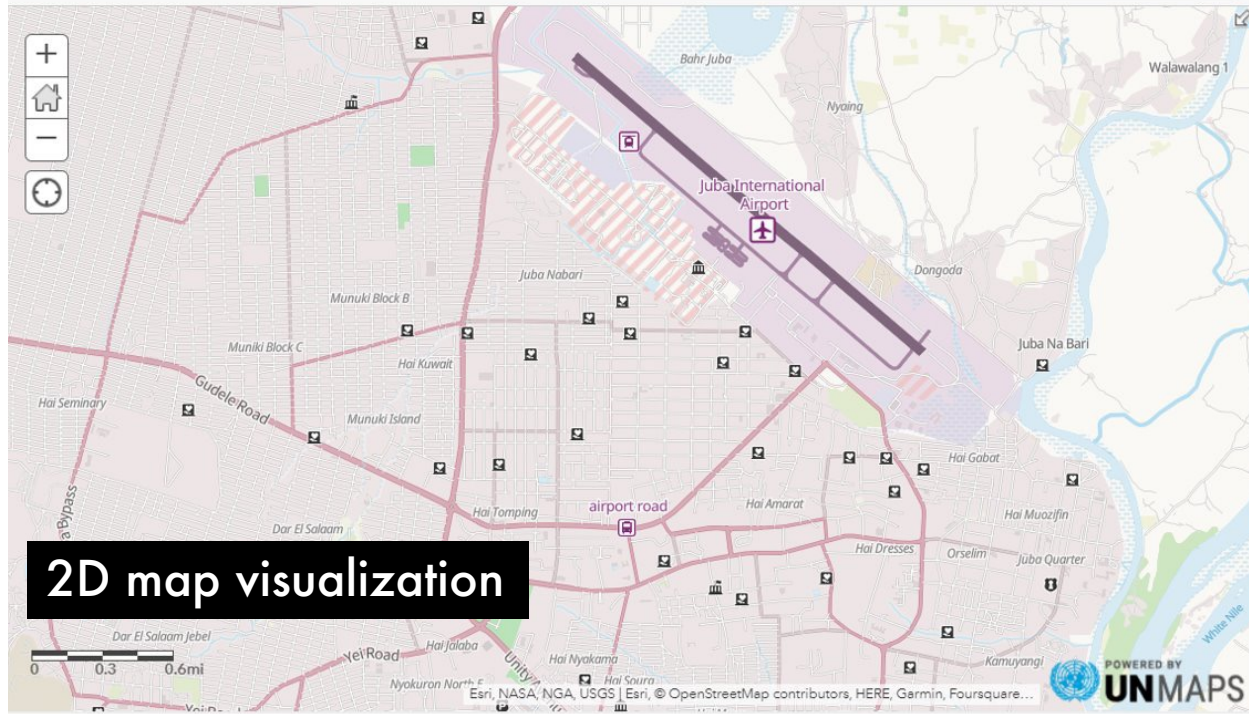


UN Open GIS
INITIATIVE



3D city model
visualization

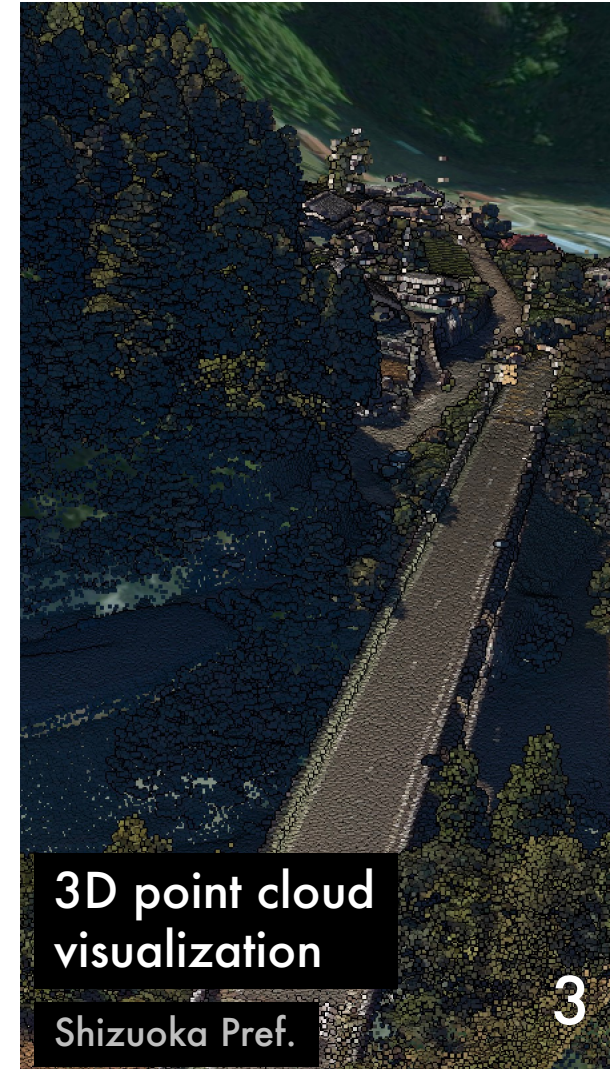
MLIT



2D map visualization



IoT device implementation



3D point cloud
visualization

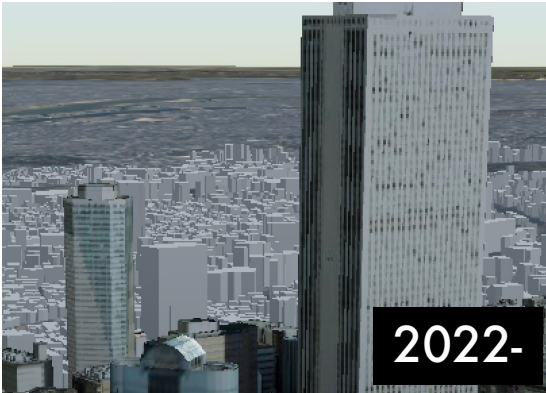
Shizuoka Pref.

2023-03-02

Smart Maps Deliverables



UN Open GIS
INITIATIVE



2022-

Smart
Maps
expansion



3D city model
visualization

MLIT

2023-03-02

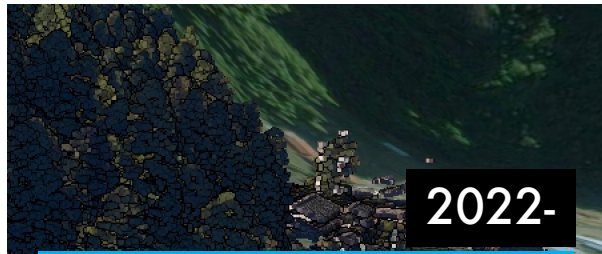


2017-

The United Nations
Vector Tile Toolkit
(the original project)



IoT device implementation



2022-

Smart
Maps
expansion



3D point cloud
visualization

Shizuoka Pref.

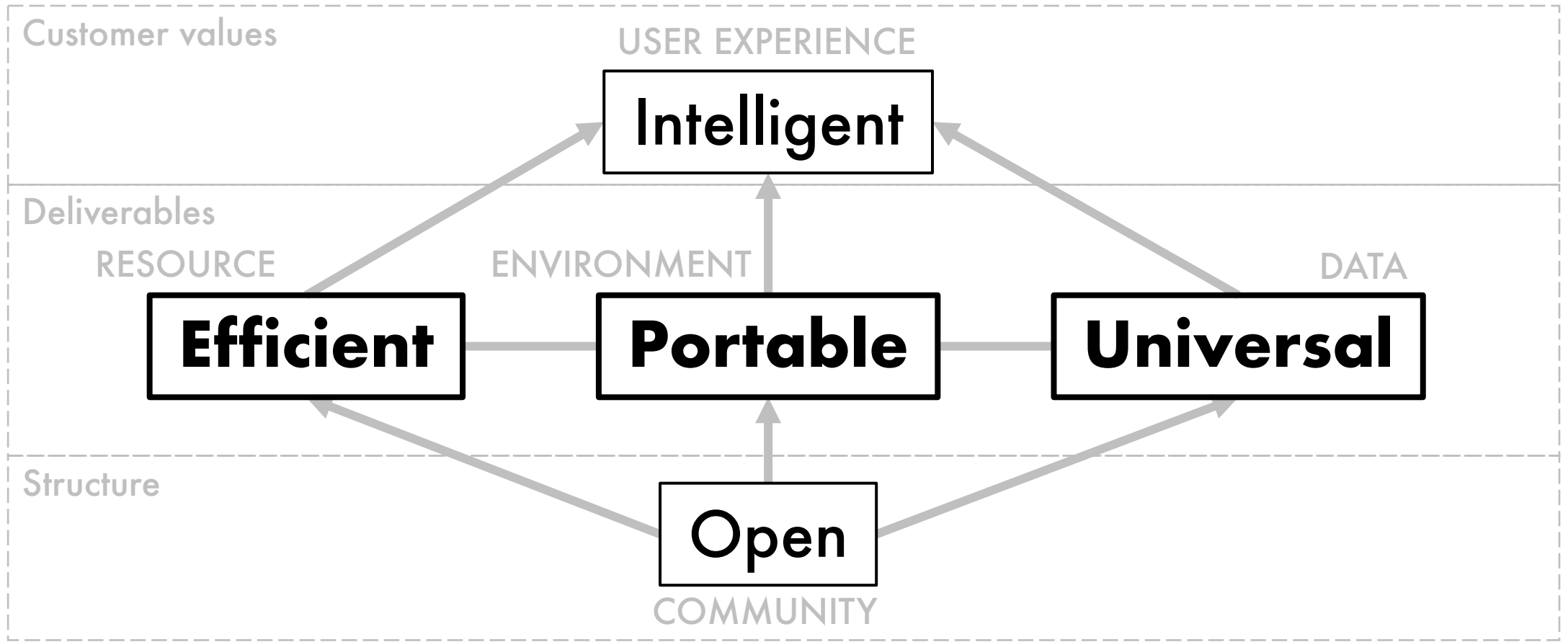
Smart Maps Strength



- Geospatial professionals empower each other for the **nexus** of domestic implementation and international cooperation.
- Authorized as “Partnership through Geospatial Information” in the **SDGs Action Plan** of the Government of Japan.
- Long-term and **community-based** commitment rather than a project-based commitment.

Smart Maps Values

Vision: We keep web maps open.



Recent development



Inter-Planetary Operations

Model United Nations Development and Operations

Inter-Planetary Operations (IPO)



Context

Geospatial data sharing is hard without a server system.

Decision

Use Inter-Planetary File System (IPFS), an open-source distributed file system often used in the Web3 context.



Consequences

Proof of Concept (PoC) was successfully implemented for cadastre and 3D geospatial data in Japan, thanks to in-kind support from Sakura Internet through Code for Japan.

Model UN DevOps (MUNDO)



Context

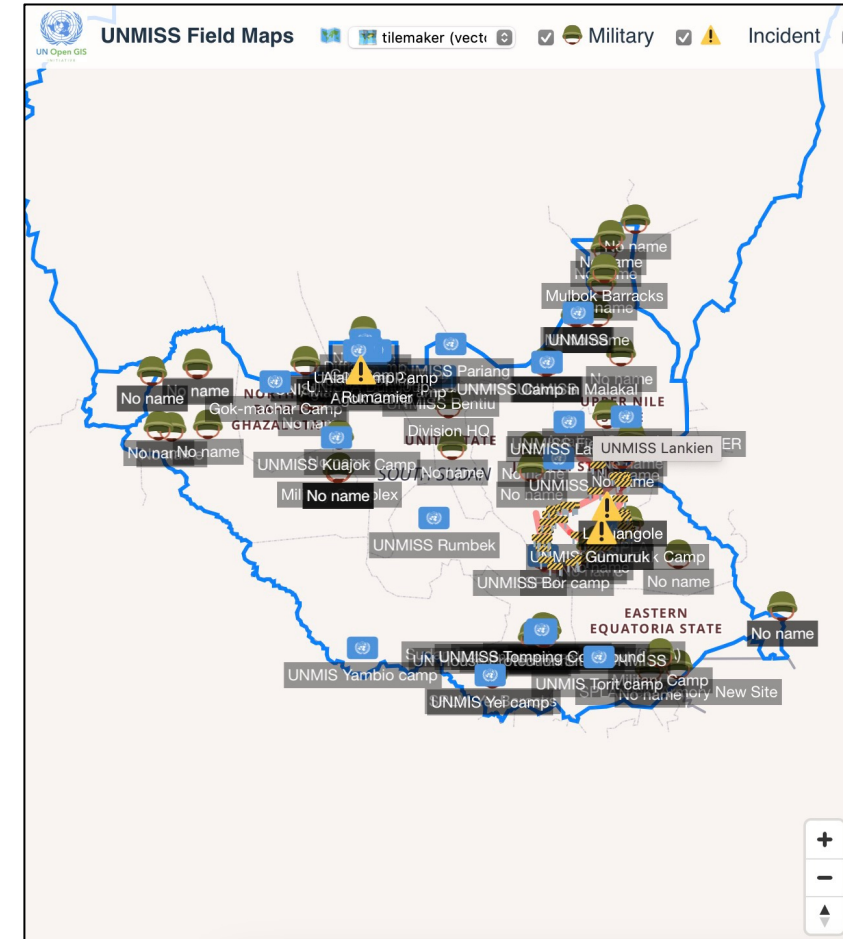
There are learning opportunities even without access to UN data and servers.

Decision

Simulate service development and operations using open data only, providing learning opportunity like the Model United Nations.

Consequences

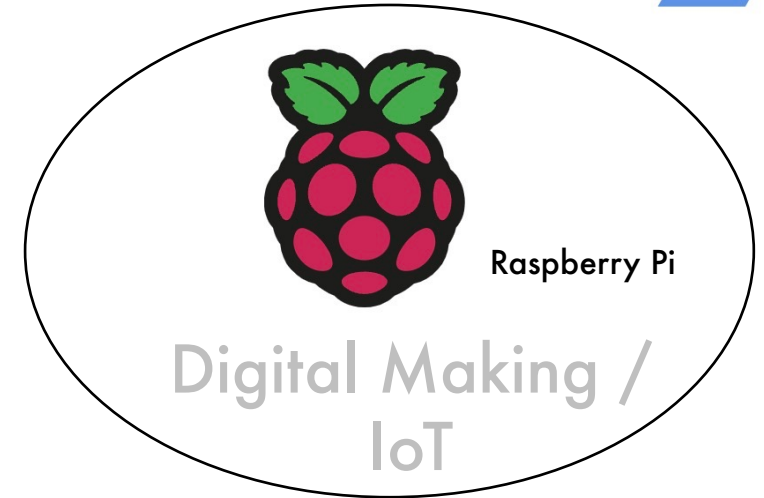
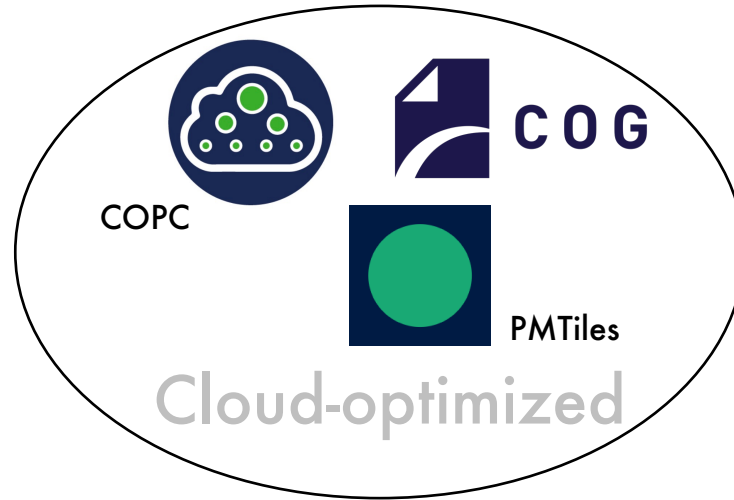
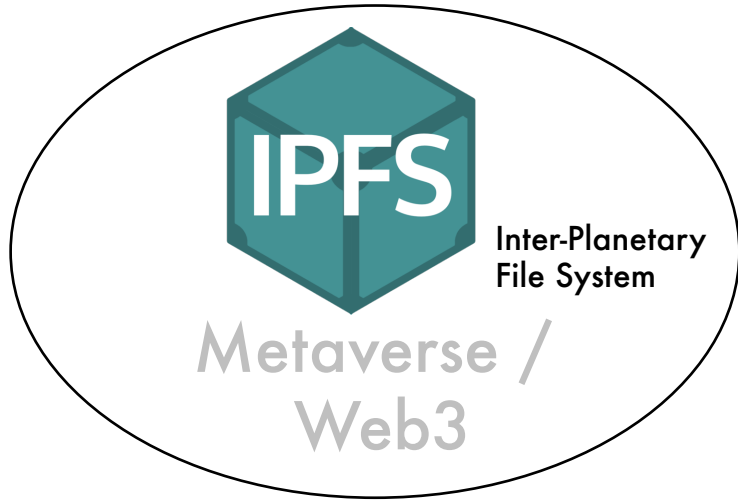
Education & awareness-raising opportunity.
Possibility for a pilot project.



The way forward



- We continue to be **open** to new technologies, such as



- We will be an **open** community to build **intelligent** web maps using **efficient, portable, and universal** web map technologies.
- We co-create excellence to **keep web maps open**.
- We keep on combining geospatial efforts across the **nexus**.

Thank you.



- 7₁ UN ops.
- 7₂ GSI ops.
- 7₃ UNVT Portable
- 7₄ Smart Campus
- 7₅ Spatial ID dev.
- 7₆ Sensor Integration
- 7₇ Core dev.