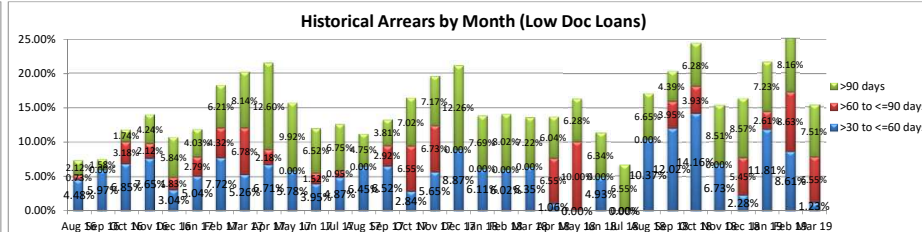
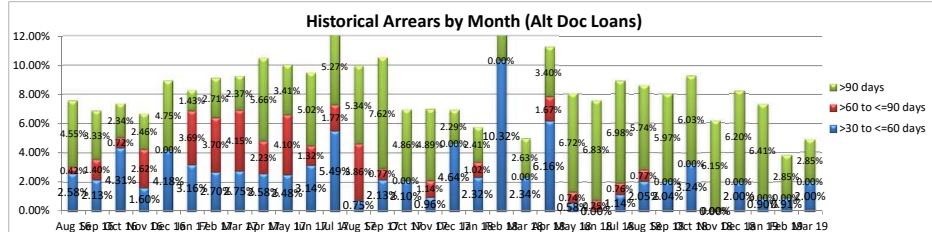
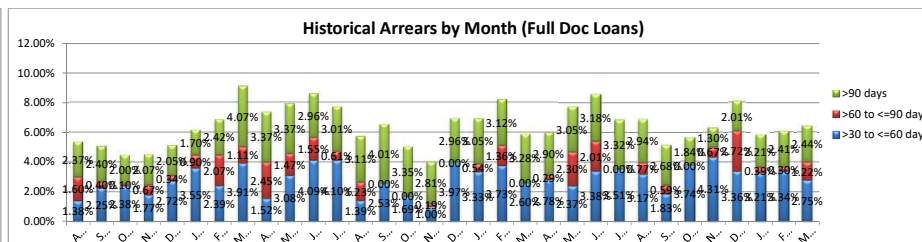
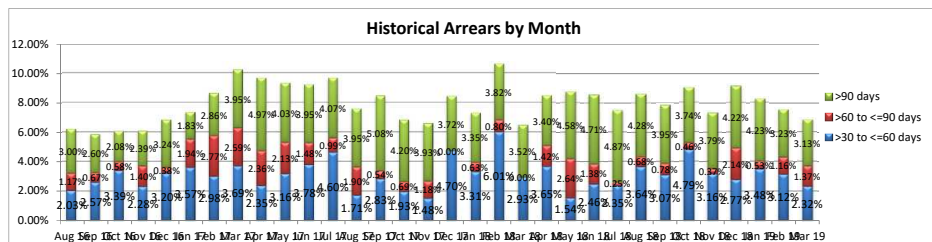


PEPPER RESIDENTIAL SECURITIES TRUST NO.15 (PRS15 TRUST)

COLLATERAL DATA AS AT 31 MARCH 2019

Pool Data as at:	31/03/2019	WA Margin (over 1 mth BBSW)	5.27%	Average Loan Size (Consolidated)	300,402	Reversion WA Rate	7.11%
Portfolio Balance	90,120,708	Weighted Average LVR	68.15%	Maximum Loan Size (Consolidated)	2,071,523	WA Maturity	296.22
Number of Loans (Consolidated)	300	Maximum LVR	117.59%	Minimum Loan Size (Consolidated)	-748	Weighted Average NSR	1.59
Number of Loans (Split)	314	Minimum LVR	-0.13%	WA Seasoning	65.71		
WA Interest Rate	7.11%						

Days in Arrears	AUD	No.	%AUD	%No	Weighted Averages		Arrears (Days)					Documentation			By State or Territory								
					Coupon	Seasoning	Current	1-30	31-60	61-90	90+	Full	Alt	Low	ACT	NSW	VIC	QLD	SA	WA	TAS	NT	
Current	68,854,657	249	76.40%	79.30%	6.99%	65.61	100.00%	-	-	-	-	-	54.91%	34.78%	10.31%	1.89%	28.06%	23.01%	14.87%	11.24%	19.87%	0.32%	0.74%
>1 to <=30 days	15,113,385	43	16.77%	13.69%	7.45%	61.85	-	100.00%	-	-	-	-	52.78%	39.51%	7.71%	-	28.28%	11.62%	13.39%	9.49%	34.82%	-	2.40%
>30 to <=60 days	2,094,715	9	2.32%	2.87%	7.53%	59.11	-	-	100.00%	-	-	-	64.27%	29.98%	5.74%	-	5.74%	48.49%	19.62%	-	26.15%	-	-
>60 to <=90 days	1,237,508	4	1.37%	1.27%	6.99%	96.88	-	-	-	100.00%	-	-	48.35%	-	51.65%	-	-	19.04%	-	12.10%	68.85%	-	-
>90 days	2,820,444	9	3.13%	2.87%	8.15%	80.16	-	-	-	-	100.00%	-	42.25%	31.77%	25.98%	-	23.32%	30.49%	7.84%	-	38.35%	-	-
Total	90,120,708	314	100.00%	100.00%	7.11%	65.71	76.40%	16.77%	2.32%	1.37%	3.13%	-	54.28%	34.89%	10.83%	1.44%	27.04%	21.87%	14.31%	10.35%	23.78%	0.25%	0.97%



The "Days in Arrears" categories shown above were consistent with the ASF Reporting Standard and RBA reporting requirements.