



Performance



Accessibility



Best Practices



SEO

There were issues affecting this run of Lighthouse:

- There may be stored data affecting loading performance in this location: IndexedDB. Audit this page in an incognito window to prevent those resources from affecting your scores.



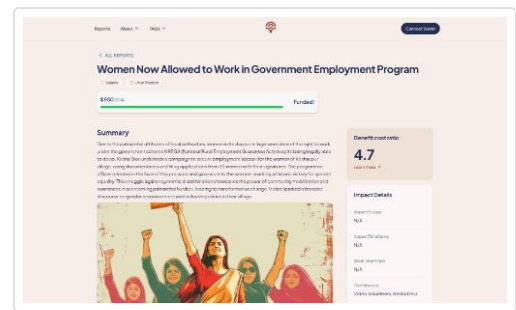
Performance

Values are estimated and may vary. The [performance score is calculated](#) directly from these metrics. [See calculator.](#)

▲ 0-49

50-89

90-100



METRICS

Expand view

First Contentful Paint

0.4 s

Largest Contentful Paint

1.5 s

Total Blocking Time

0 ms

Cumulative Layout Shift

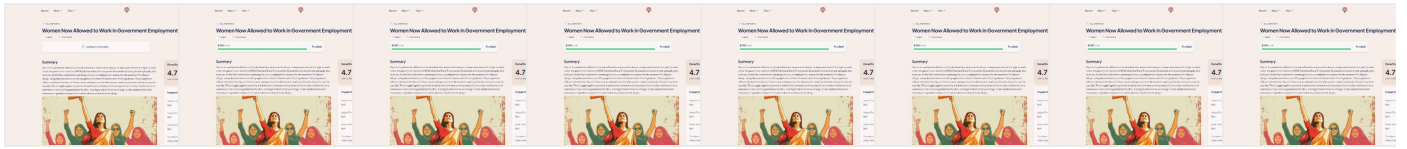
0.001

Speed Index

1.1 s



View Treemap



Show audits relevant to: All [FCP](#) [LCP](#) [TBT](#) [CLS](#)

DIAGNOSTICS

- ▲ Largest Contentful Paint image was lazily loaded ▼

- ▲ Reduce unused JavaScript — Potential savings of 516 KiB ▼

- ▲ Largest Contentful Paint element — 1,480 ms ▼

- ▲ Page prevented back/forward cache restoration — 7 failure reasons ▼

- Serve static assets with an efficient cache policy — 2 resources found ▼

- Avoid serving legacy JavaScript to modern browsers — Potential savings of 8 KiB ▼

- Avoid large layout shifts — 3 layout shifts found ▼

- Initial server response time was short — Root document took 110 ms ▼

- Avoids enormous network payloads — Total size was 1,210 KiB ▼

- Avoids an excessive DOM size — 263 elements ▼

- Avoid chaining critical requests — 1 chain found ▼

- JavaScript execution time — 0.1 s ▼

- Minimizes main-thread work — 0.4 s ▼

- Minimize third-party usage — Third-party code blocked the main thread for 0 ms ▼

More information about the performance of your application. These numbers don't [directly affect](#) the Performance score.

PASSED AUDITS (25)

Show



Accessibility

These checks highlight opportunities to [improve the accessibility of your web app](#). Automatic detection can only detect a subset of issues and does not guarantee the accessibility of your web app, so [manual testing](#) is also encouraged.

ARIA

- ▲ ARIA [progressbar](#) elements do not have accessible names. ▼

These are opportunities to improve the usage of ARIA in your application which may enhance the experience for users of assistive technology, like a screen reader.

CONTRAST

- ▲ Background and foreground colors do not have a sufficient contrast ratio. ▼

These are opportunities to improve the legibility of your content.

TABLES AND LISTS

- ▲ Lists do not contain only `` elements and script supporting elements (`<script>` and `<template>`). ▼

These are opportunities to improve the experience of reading tabular or list data using assistive technology, like a screen reader.

NAVIGATION

- ▲ Heading elements are not in a sequentially-descending order ▼

These are opportunities to improve keyboard navigation in your application.

ADDITIONAL ITEMS TO MANUALLY CHECK (10)

[Show](#)

These items address areas which an automated testing tool cannot cover. Learn more in our guide on [conducting an accessibility review](#).

PASSED AUDITS (18)

[Show](#)

NOT APPLICABLE (38)

Show



Best Practices

TRUST AND SAFETY

- Ensure CSP is effective against XSS attacks



GENERAL

- Detected JavaScript libraries



- ▲ Missing source maps for large first-party JavaScript



PASSED AUDITS (13)

Show

NOT APPLICABLE (1)

Show



SEO

These checks ensure that your page is following basic search engine optimization advice. There are many additional factors Lighthouse does not score here that may affect your search ranking, including performance on [Core Web Vitals](#). [Learn more about Google Search Essentials](#).

CONTENT BEST PRACTICES

- ▲ Links do not have descriptive text — 1 link found



Format your HTML in a way that enables crawlers to better understand your app's content.

ADDITIONAL ITEMS TO MANUALLY CHECK (1)

Show

Run these additional validators on your site to check additional SEO best practices.

PASSED AUDITS (9)

Show

NOT APPLICABLE (4)

Show

■ Captured at May 5, 2024, 9:27 PM MDT

■ Emulated Desktop with Lighthouse 11.6.0

■ Single page session

■ Initial page load

■ Custom throttling

■ Using Chromium 124.0.0.0 with devtools

Generated by **Lighthouse** 11.6.0 | [File an issue](#)