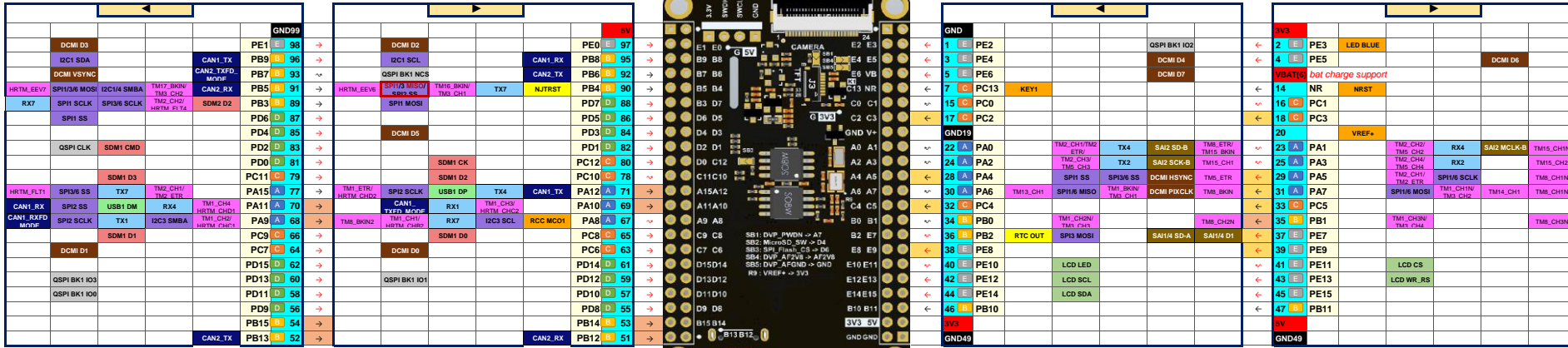


WeAct Studio

Mini STM32H7xx

STM32H743VIT6



LEGEND

| CPU pin | |
|------------------------|--|
| Pin name | |
| A | Port A |
| B | Port B |
| C | Port C |
| D | Port D |
| E | Port E |
| --- | DIG IO pin (5V IOL) |
| --- | DIG IO Hi-speed Low-voltage pin (5V IOL) |
| ~ | PWM pin (DIG + ANA) |
| ~ | PWM Hi-speed |
| --- | ANA-only input pin (3.3V) |
| --- | IO pin with USB power option |
| POWER | |
| GROUND(PIN NO) | |
| BOARD HARDWARE | |
| DEBUG | |
| USB | |
| USART | |
| SDIO (microSD) | |
| SPI/I2C | |
| DCMI (camera) | |
| QSPI | |
| SAI (audio) | |
| LCD | |
| TIMER AND CHANNEL | |
| CAN | |
| Board default function | |

