

Installed Xpra



Xpra

4.4.4

Python 3.10, 64bit

revision 1

commit g7c742de33 from v4.4.x branch
with 0 local changes
built on Win10-Build-VM by Windows 10 Test
2023-03-10 17:28

using Cython 3.0.0a11
gcc (Rev10, Built by MSYS2 project) 12.2.0

on Windows 10 , Laptop

Item	Value
OS Name	Microsoft Windows 10 Enterprise
Version	10.0.19043 Build 19043
Other OS Description	Not Available
OS Manufacturer	Microsoft Corporation
System Name	ROBERTO3DOERKSO
System Manufacturer	Acer
System Model	TravellMate P214-53
System Type	x64-based PC
System SKU	0000000000000000
Processor	11th Gen Intel(R) Core(TM) i5-1135G7 @ 2.40GHz, 2419 Mhz, 4 Core(s), 8 Logi...
BIOS Version/Date	INSYDE Corp. V1.42, 10/05/2022
SMBIOS Version	3.3
Embedded Controller Version	1.18
BIOS Mode	UEFI
BaseBoard Manufacturer	TGL
BaseBoard Product	Timpani_TL
BaseBoard Version	V1.42
Platform Role	Mobile
Secure Boot State	On
PCR7 Configuration	Elevation Required to View
Windows Directory	C:\Windows
System Directory	C:\Windows\system32
Boot Device	\Device\HarddiskVolume1
Locale	United Kingdom
Hardware Abstraction Layer	Version = "10.0.19041.2251"
Username	AzureAD\RobertoScipioni
Time Zone	GMT Summer Time
Installed Physical Memory (RAM)	8.00 GB
Total Physical Memory	7.78 GB
Available Physical Memory	1.28 GB
Total Virtual Memory	13.0 GB

We installed xpra on Azure VM

Virtual machine	
Computer name	robertotestheeds
Operating system	Linux (centos 7.9.2009)
Publisher	OpenLogic
Offer	CentOS-HPC
Plan	7_7-gen2
VM generation	V2
VM architecture	x64
Agent status	Ready
Agent version	2.9.0.4
Host group	None
Host	-
Proximity placement	-

```
[roberto_scipioni@robertotestheeds ~]$ uname -a
Linux robertotestheeds 3.10.0-1160.88.1.el7.x86_64 #1 SMP Tue Mar 7 15:41:52 UTC 2023 x86_64 x86_64 x86_64 GNU/Linux
[roberto_scipioni@robertotestheeds ~]$
```

```
roberto_scipioni@robertotestheeds:~
CentOS Linux release 7.9.2009 (Core)
/etc/centos-release (END)
```

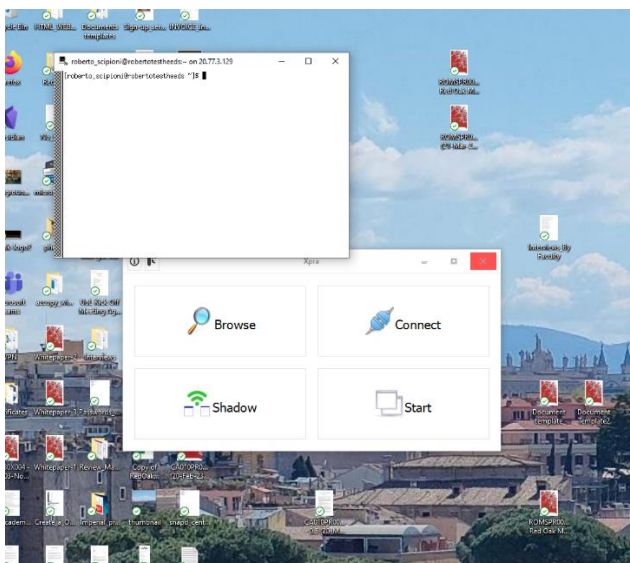
```
125 wget -O /etc/yum.repos.d/xpra.repo https://xpra.org/repos/CentOS/xpra.repo
126 yum install dnf
127 dnf install xpra
```

```
roberto_scipioni@robertotestheeds:~
[roberto_scipioni@robertotestheeds ~]$ less /etc/centos-release
[roberto_scipioni@robertotestheeds ~]$ xpra --version
xpra v3.1.4-r3M
[roberto_scipioni@robertotestheeds ~]$
```

We managed to run an xterm a first time. Running the command

xpra start :200 --start=xterm

on the Linux Server

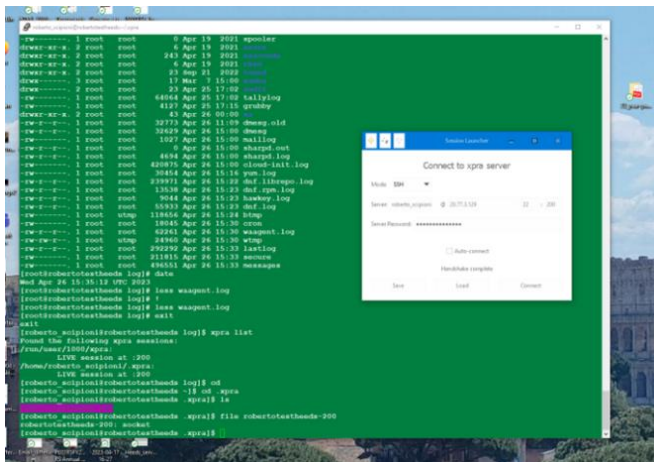


```

[roberto_scipioni@robertotestheeds ~]$ xpra list
Found the following xpra sessions:
/run/user/1000/xpra:
    LIVE session at :200
/home/roberto_scipioni/.xpra:
    LIVE session at :200
[roberto_scipioni@robertotestheeds ~]$

```

Then trying again to connect we got a frozen screen
 With written handshake complete but not the xterm program



Looking at the logs in

```

[roberto_scipioni@robertotestheeds xpra]$ pwd
/run/user/1000/xpra
[roberto_scipioni@robertotestheeds xpra]$ ls
:200.log  robertotestheeds-200  run-xpra  Xorg.:200.log
[roberto_scipioni@robertotestheeds xpra]$

```

The final part reads:

- ```

.....
[1545.602] (II) Initializing extension SELinux
[1545.602] (II) SELinux: Disabled by boolean
[1545.602] (II) Initializing extension GLX
[1545.602] (II) AIGLX: Screen 0 is not DRI2 capable
[1545.629] (II) IGLX: Loaded and initialized swrast
[1545.629] (II) GLX: Initialized DRISWRAST GL provider for screen 0
[1545.629] (II) Initializing extension XFree86-VidModeExtension
[1545.629] (II) Initializing extension XFree86-DGA
[1545.629] (II) Initializing extension XFree86-DRI
[1545.629] (II) Initializing extension DRI2
[1545.629] (II) DUMMY(0): Setting screen physical size to 2167 x 1083
[1545.669] (II) LoadModule: "mouse"
[1545.669] (WW) Warning, couldn't open module mouse

```

[ 1545.669] (EE) Failed to load module "mouse" (module does not exist, 0)

[ 1545.669] (EE) No input driver matching `mouse'

[ 1545.669] (II) Falling back to input driver `evdev'

[ 1545.669] (II) LoadModule: "evdev"

**[ 1545.670] (WW) Warning, couldn't open module evdev**

[ 1545.670] (EE) Failed to load module "evdev" (module does not exist, 0)

[ 1545.670] (II) LoadModule: "kbd"

**[ 1545.670] (WW) Warning, couldn't open module kbd**

[ 1545.670] (EE) Failed to load module "kbd" (module does not exist, 0)

[ 1545.670] (EE) No input driver matching `kbd'

[ 1545.670] (II) Falling back to input driver `evdev'

[ 1545.670] (II) LoadModule: "evdev"

**[ 1545.670] (WW) Warning, couldn't open module evdev**

[ 1545.670] (EE) Failed to load module "evdev" (module does not exist, 0)

[ 1545.672] (II) config/udev: Adding input device AT Translated Set 2 keyboard (/dev/input/event1)

[ 1545.672] (II) AutoAddDevices is off - not adding device.

[ 1545.672] (II) config/udev: Adding input device PC Speaker (/dev/input/event2)

[ 1545.672] (II) AutoAddDevices is off - not adding device.

[ 1545.672] (II) config/udev: Adding input device Microsoft Vmbus HID-compliant Mouse (/dev/input/event0)

[ 1545.672] (II) AutoAddDevices is off - not adding device.

[ 1545.673] (II) config/udev: Adding input device Microsoft Vmbus HID-compliant Mouse (/dev/input/js0)

[ 1545.673] (II) AutoAddDevices is off - not adding device.

[ 1545.673] (II) config/udev: Adding input device Microsoft Vmbus HID-compliant Mouse (/dev/input/mouse0)

[ 1545.673] (II) AutoAddDevices is off - not adding device.