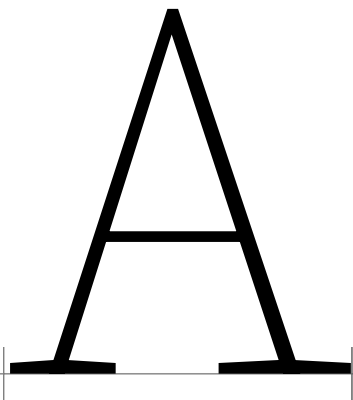


Source Serif Pro Master

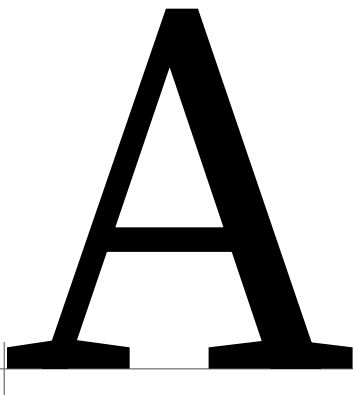
2019-04-12

16:49:35

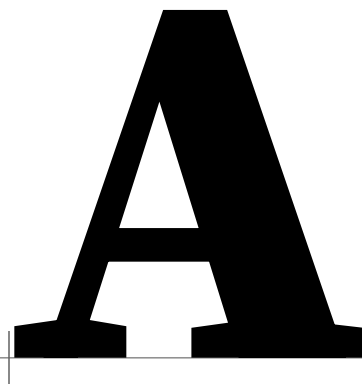
Alpha | A | U+0391



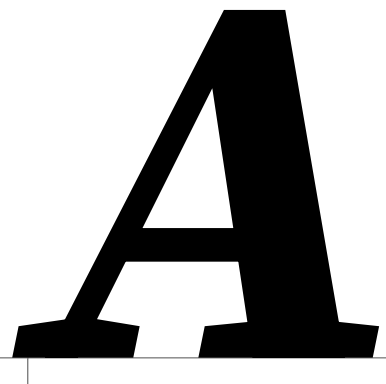
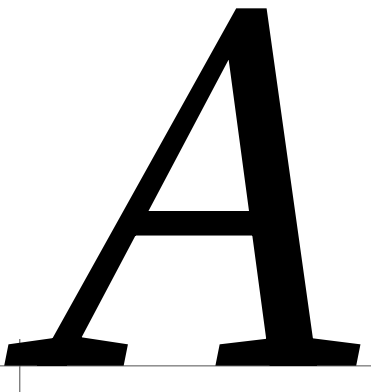
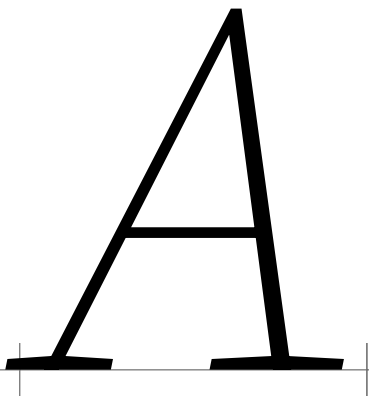
0



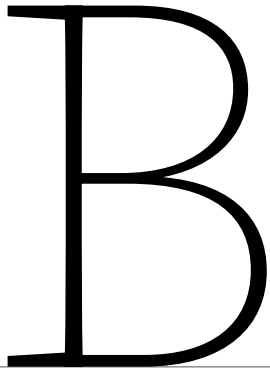
1



2

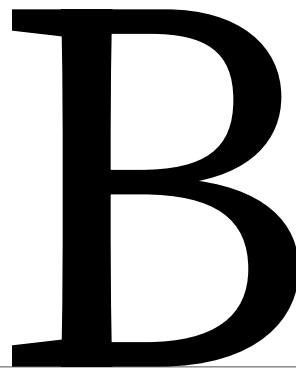


Beta | B | U+0392



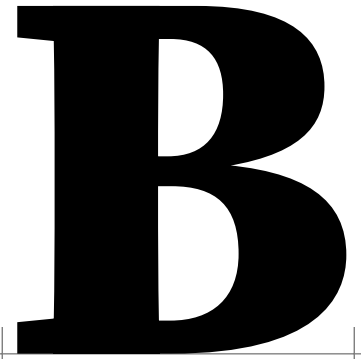
B

0



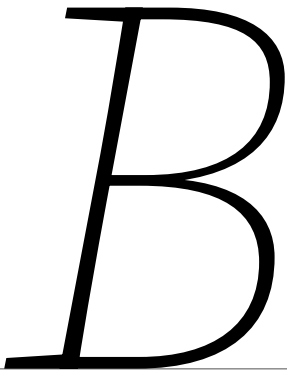
B

1

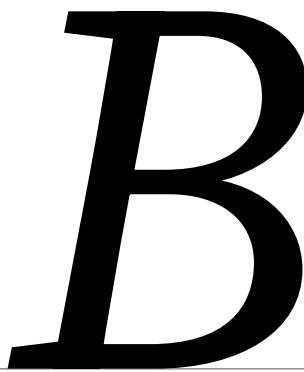


B

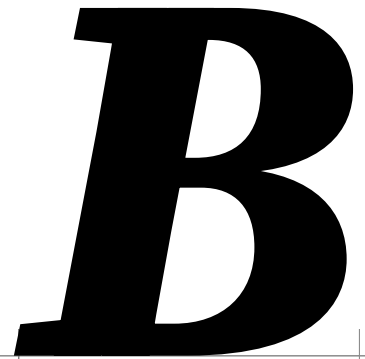
2



B

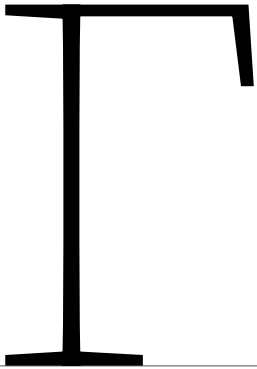


B

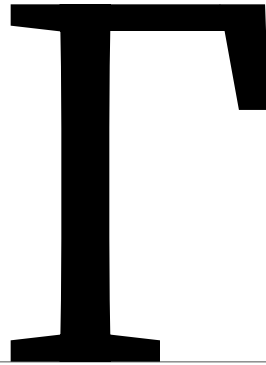


B

Gamma | Γ | U+0393



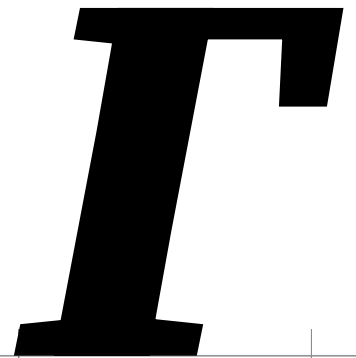
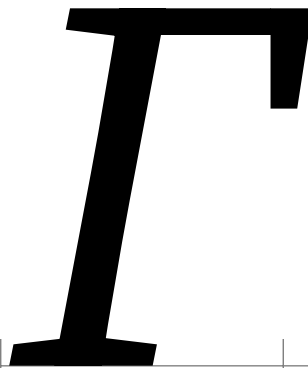
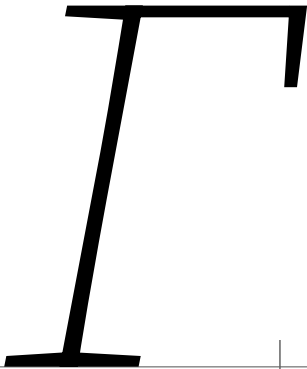
0



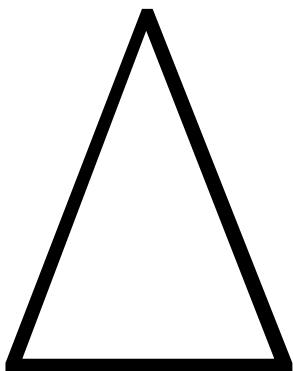
1



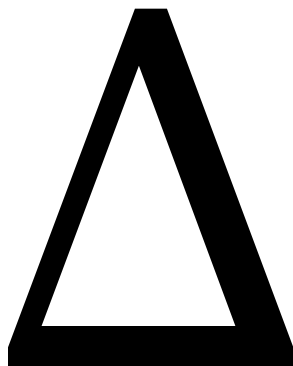
2



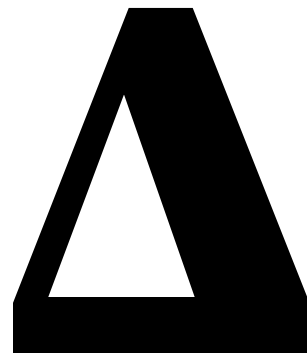
Delta | Δ | U+0394



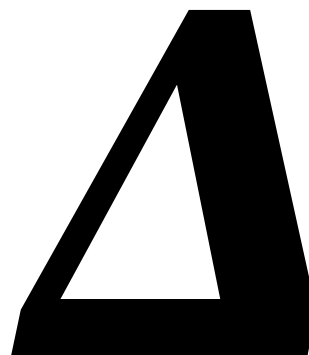
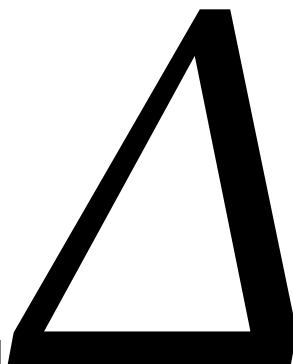
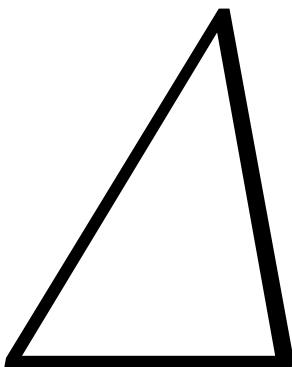
0



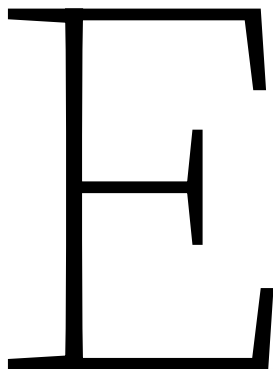
1



2

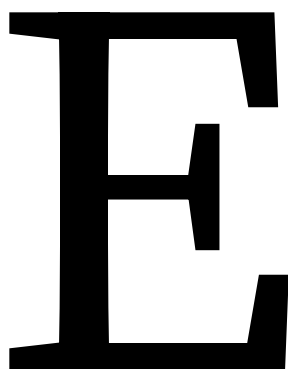


Epsilon | E | U+0395



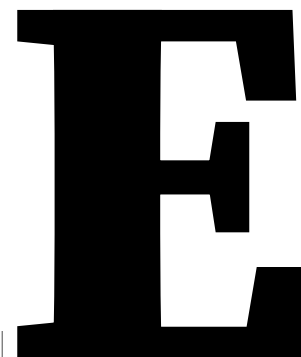
A thin, light-colored uppercase letter 'E' with a simple, clean design. It features a vertical stem on the left and a horizontal bar at the top that extends slightly to the right. The bottom horizontal bar is also thin and slightly angled.

0



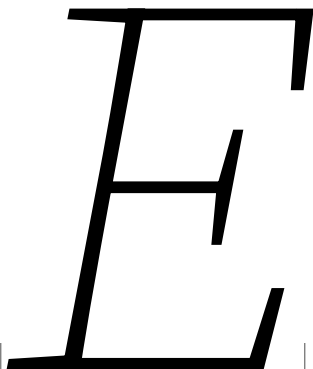
A medium-weight uppercase letter 'E' with a slightly more robust design than the first. The vertical stem and horizontal bars are thicker, and the top bar has a small hook-like detail on the right side.

1




A bold, heavy uppercase letter 'E' with a thick, solid appearance. The vertical stem and horizontal bars are very thick, and the top bar has a prominent hook-like detail on the right side.

2



A thin, light-colored uppercase letter 'E' in an italicized style. The vertical stem is slanted to the right, and the horizontal bars are also slanted. The top bar has a small hook-like detail on the right side.

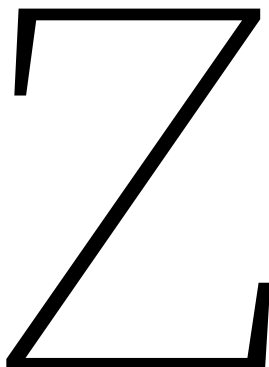


A medium-weight uppercase letter 'E' in an italicized style. The vertical stem and horizontal bars are thicker, and the top bar has a small hook-like detail on the right side.



A bold, heavy uppercase letter 'E' in an italicized style. The vertical stem and horizontal bars are very thick, and the top bar has a prominent hook-like detail on the right side.

Zeta | Z | U+0396

A thin black outline of the uppercase letter Z, positioned on a horizontal baseline. The letter has a top horizontal bar, a diagonal stroke, and a bottom horizontal bar.

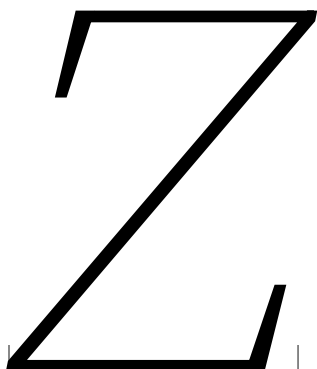
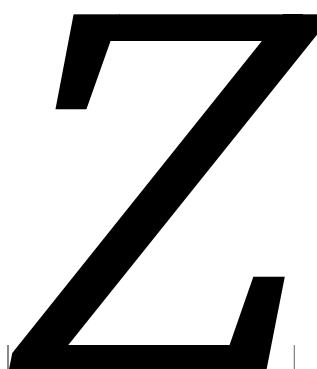
0

A medium-weight black outline of the uppercase letter Z, positioned on a horizontal baseline. The letter has a top horizontal bar, a diagonal stroke, and a bottom horizontal bar.

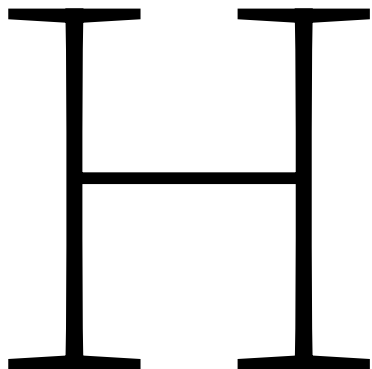
1

A bold black outline of the uppercase letter Z, positioned on a horizontal baseline. The letter has a top horizontal bar, a diagonal stroke, and a bottom horizontal bar.

2

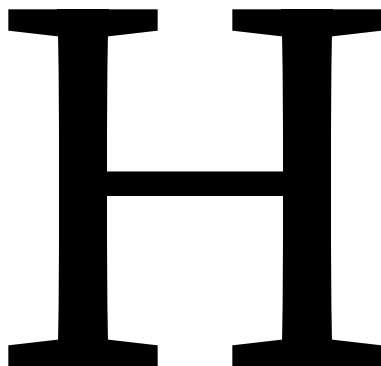
A thin black outline of the lowercase letter z, positioned on a horizontal baseline. The letter has a top horizontal bar, a diagonal stroke, and a bottom horizontal bar.A medium-weight black outline of the lowercase letter z, positioned on a horizontal baseline. The letter has a top horizontal bar, a diagonal stroke, and a bottom horizontal bar.A bold black outline of the lowercase letter z, positioned on a horizontal baseline. The letter has a top horizontal bar, a diagonal stroke, and a bottom horizontal bar.

Eta | H | U+0397



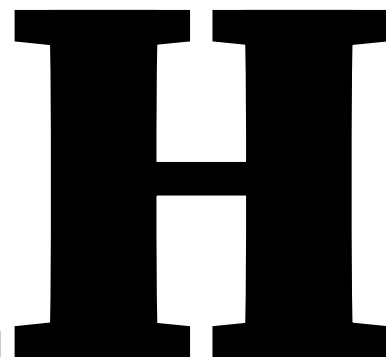
A thin, regular uppercase letter 'H' with a simple, clean design. The vertical stems are thin, and the horizontal bars are also thin. The letter is positioned on a baseline with vertical tick marks on either side.

0



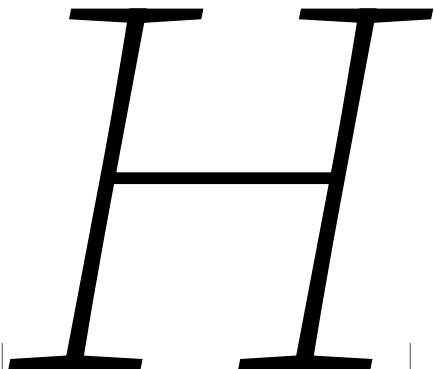
A medium-weight uppercase letter 'H' with a slightly more substantial design than the first. The vertical stems and horizontal bars are thicker. The letter is positioned on a baseline with vertical tick marks on either side.

1



A bold uppercase letter 'H' with thick vertical stems and horizontal bars. The letter is positioned on a baseline with vertical tick marks on either side.

2



A thin, italicized uppercase letter 'H'. The vertical stems are slanted to the right, and the horizontal bars are also slanted. The letter is positioned on a baseline with vertical tick marks on either side.

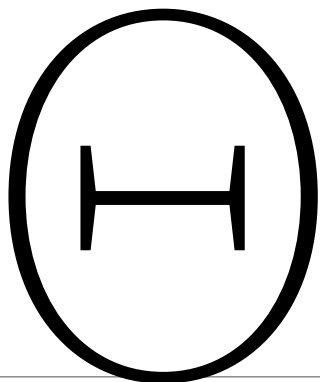


A medium-weight, italicized uppercase letter 'H'. The vertical stems are slanted to the right, and the horizontal bars are also slanted. The letter is positioned on a baseline with vertical tick marks on either side.

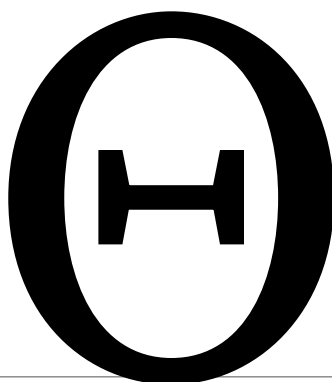


A bold, italicized uppercase letter 'H'. The vertical stems are slanted to the right, and the horizontal bars are also slanted. The letter is positioned on a baseline with vertical tick marks on either side.

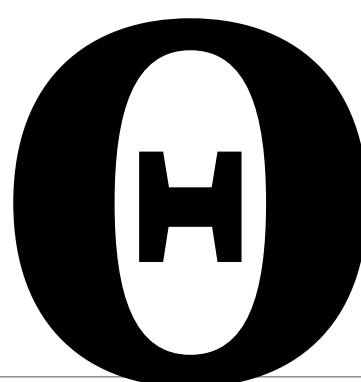
Theta | Θ | U+0398



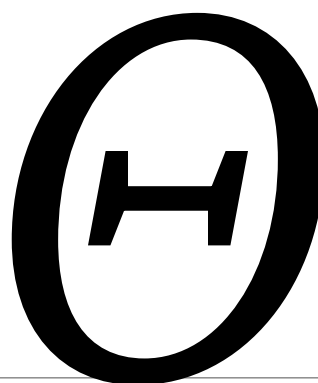
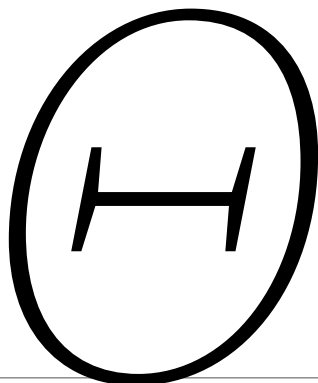
0



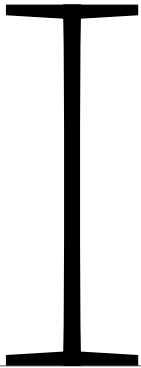
1



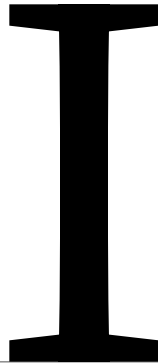
2



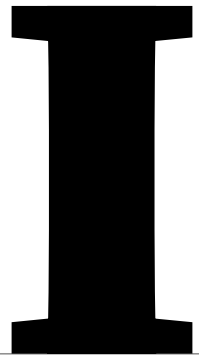
Iota | I | U+0399



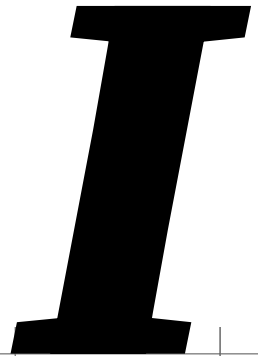
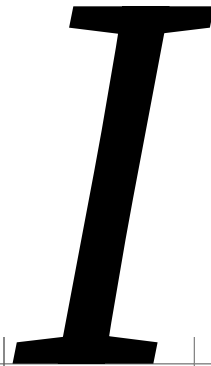
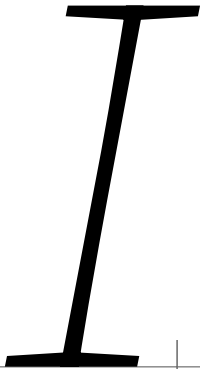
0



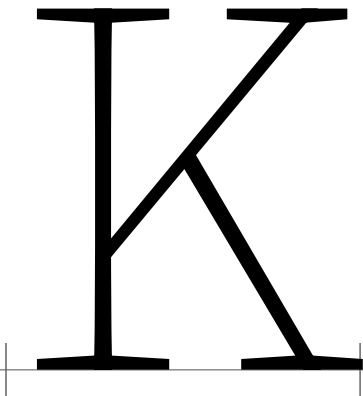
1



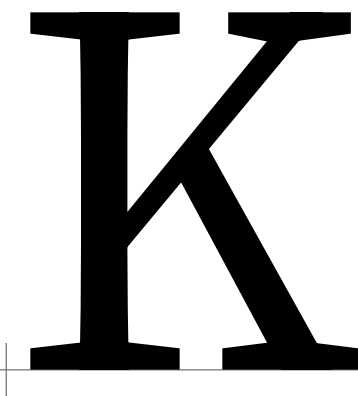
2



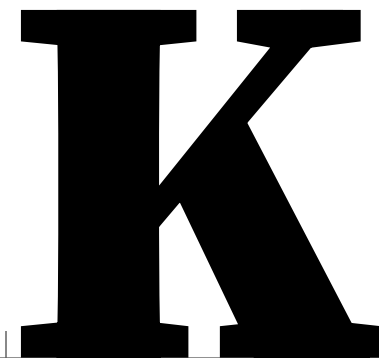
Kappa | K | U+039A



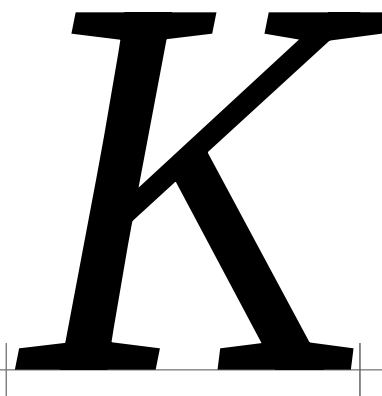
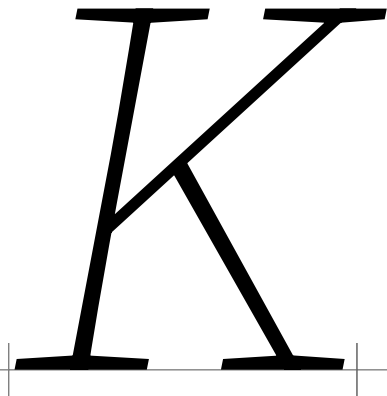
0



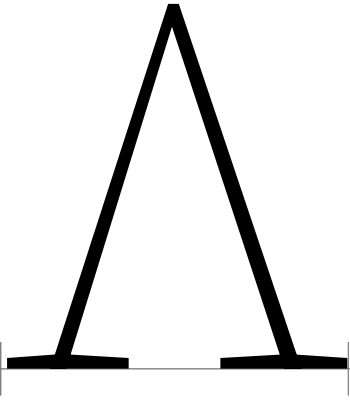
1



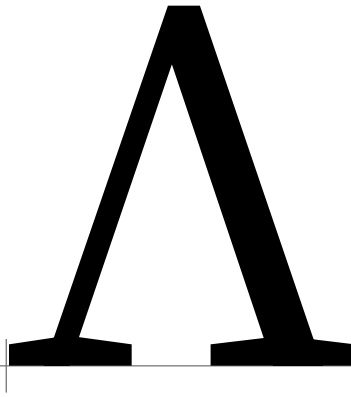
2



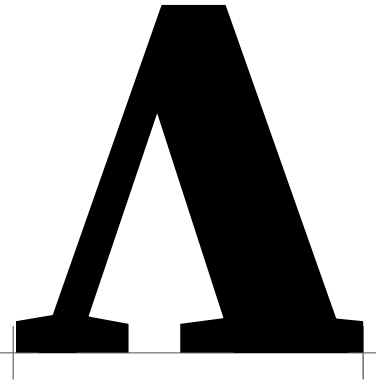
Lambda | Λ | U+039B



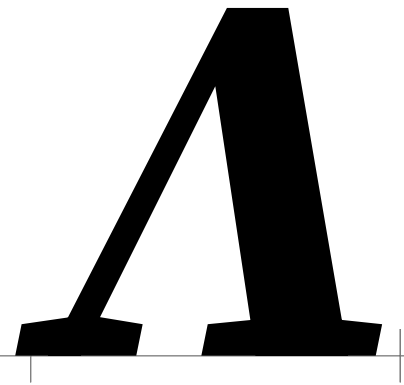
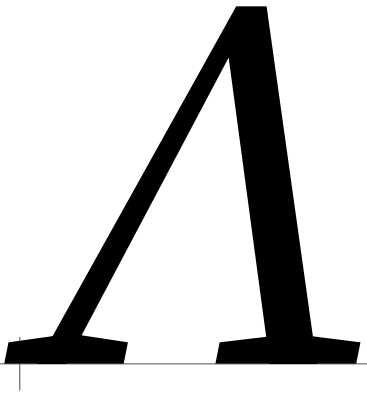
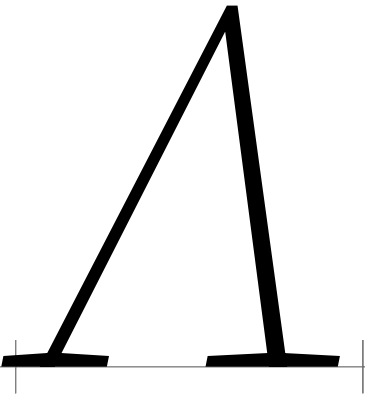
0



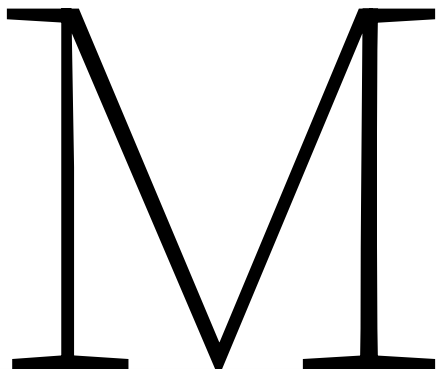
1



2



Mu | M | U+039C



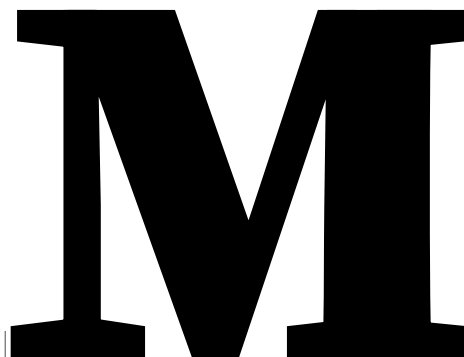
A thin, light uppercase letter 'M' with a simple, clean design. The vertical stems are thin, and the top horizontal bars are also thin. The letter is positioned on a horizontal baseline.

0



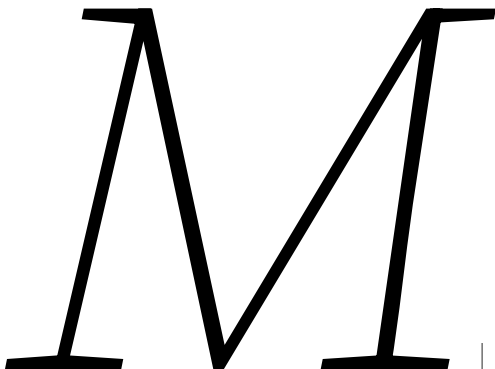
A medium-weight uppercase letter 'M' with a slightly more substantial design than the first. The vertical stems and top horizontal bars are thicker. The letter is positioned on a horizontal baseline.

1



A bold uppercase letter 'M' with thick vertical stems and top horizontal bars. The letter is positioned on a horizontal baseline.

2



A thin, light uppercase letter 'M' with a slight slant to the right. The vertical stems are thin, and the top horizontal bars are also thin. The letter is positioned on a horizontal baseline.

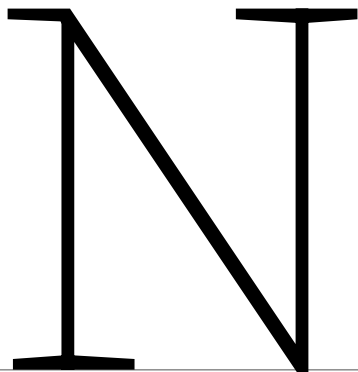


A medium-weight uppercase letter 'M' with a slight slant to the right. The vertical stems and top horizontal bars are thicker. The letter is positioned on a horizontal baseline.



A bold uppercase letter 'M' with a slight slant to the right. The vertical stems and top horizontal bars are thick. The letter is positioned on a horizontal baseline.

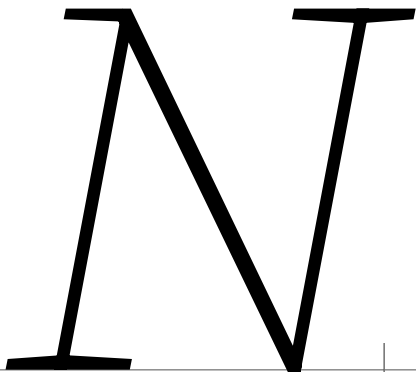
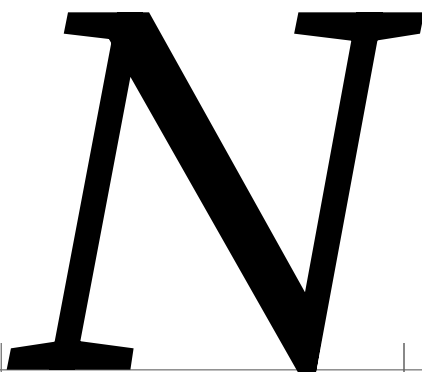
Nu | N | U+039D

A thin, light weight uppercase letter 'N' with a simple, clean design. It features a vertical stem on the left, a diagonal stroke from the top left to the bottom right, and a vertical stem on the right. The top and bottom are simple horizontal bars.A medium weight uppercase letter 'N' with a slightly more robust design than the first. The vertical stems and diagonal stroke are thicker, and the top and bottom bars are more pronounced.A bold uppercase letter 'N' with a thick, heavy design. The vertical stems and diagonal stroke are very thick, and the top and bottom bars are wide and solid.

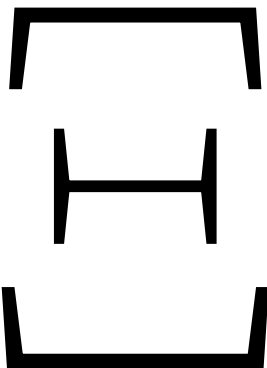
0

1

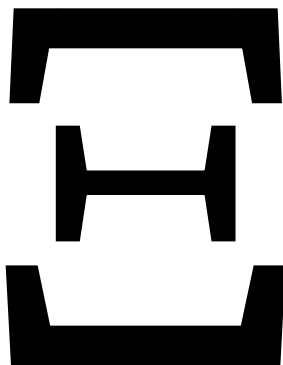
2

A thin, light weight uppercase letter 'N' with a slight slant to the right. The vertical stems and diagonal stroke are thin, and the top and bottom bars are simple horizontal lines.A medium weight uppercase letter 'N' with a slight slant to the right. The vertical stems and diagonal stroke are thicker, and the top and bottom bars are more pronounced.A bold uppercase letter 'N' with a slight slant to the right. The vertical stems and diagonal stroke are very thick, and the top and bottom bars are wide and solid.

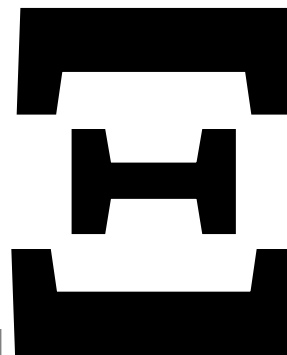
Xi | ≡ | U+039E



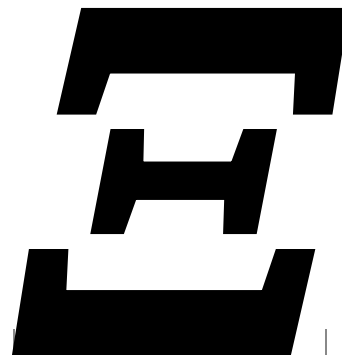
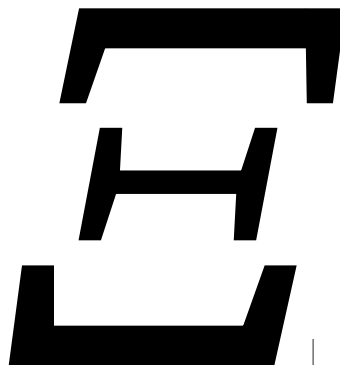
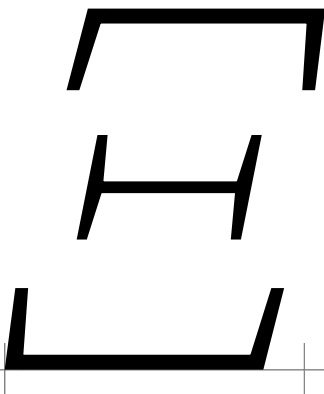
0



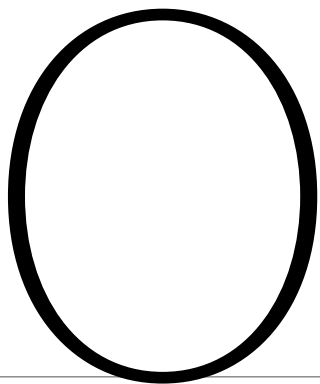
1



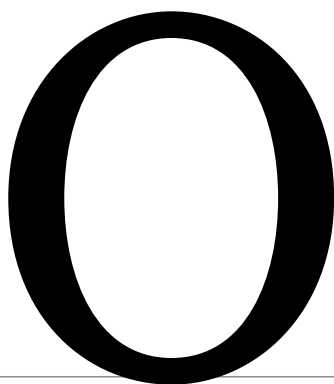
2



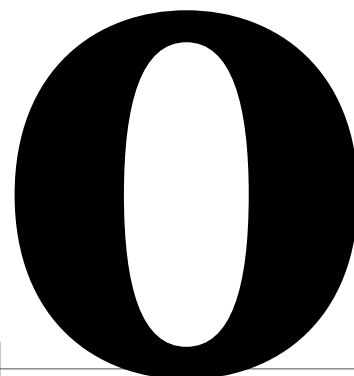
Omicron | 0 | U+039F



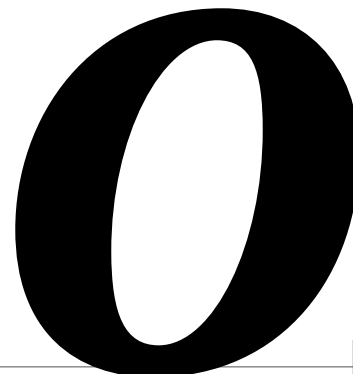
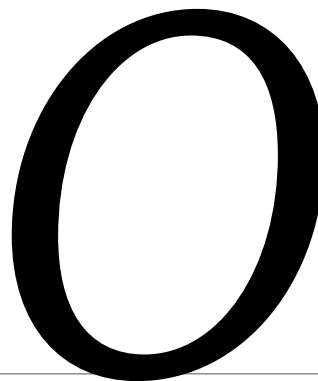
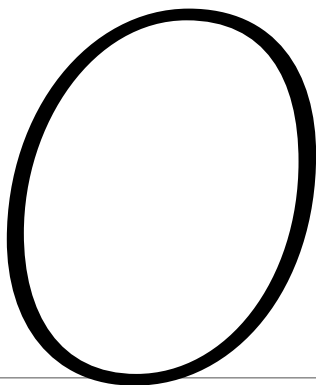
0



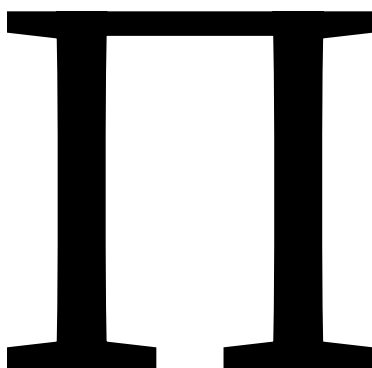
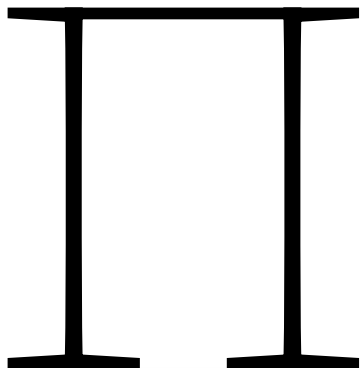
1



2



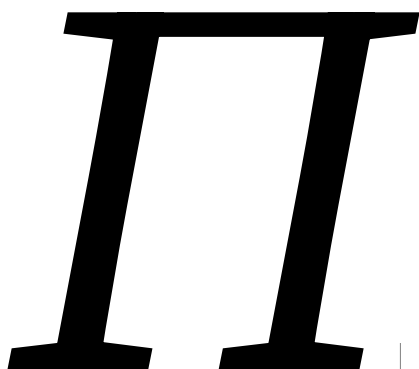
Π | Π | U+03A0



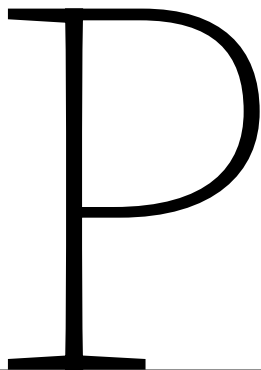
0

1

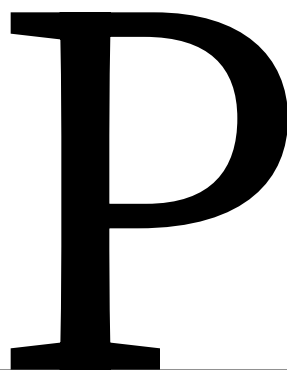
2



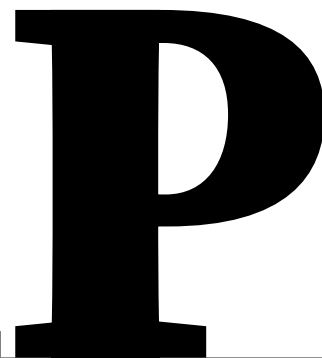
Rho | P | U+03A1



A thin, light-colored uppercase letter 'P' with a simple, clean design.



A medium-weight uppercase letter 'P' with a slightly thicker stroke than the first version.

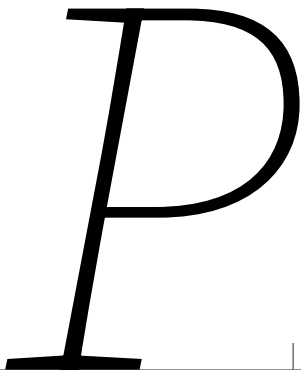


A bold uppercase letter 'P' with a thick, heavy stroke.

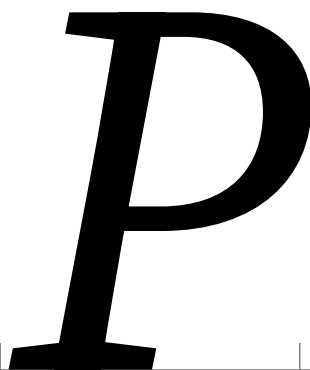
0

1

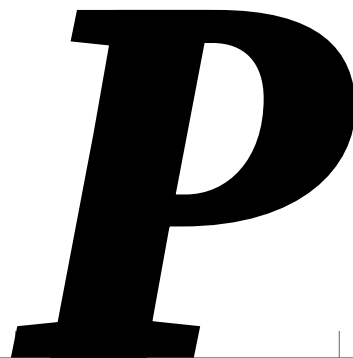
2



A thin, light-colored uppercase letter 'P' in an italicized font style, slanted to the right.

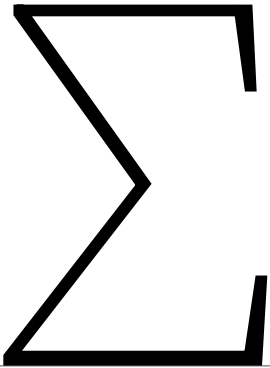


A medium-weight uppercase letter 'P' in an italicized font style, slanted to the right.

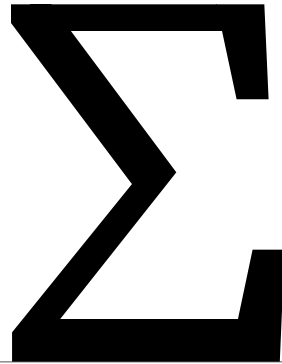


A bold uppercase letter 'P' in an italicized font style, slanted to the right.

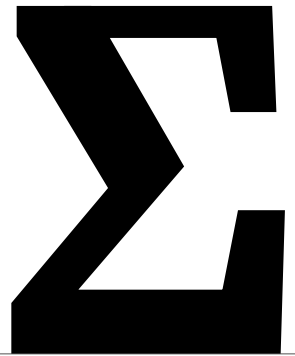
Sigma | Σ | U+03A3



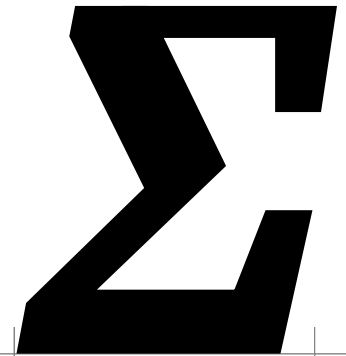
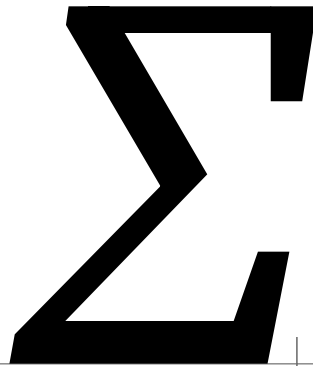
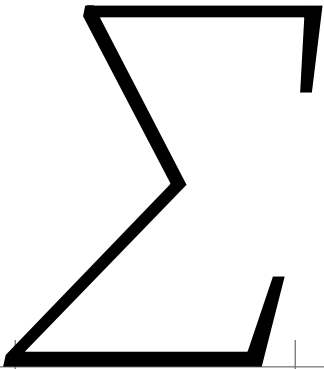
0



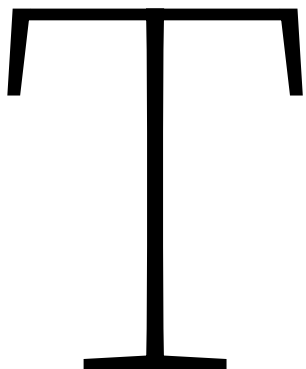
1



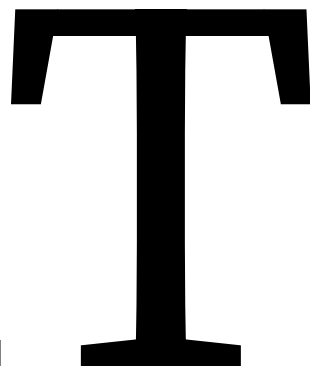
2



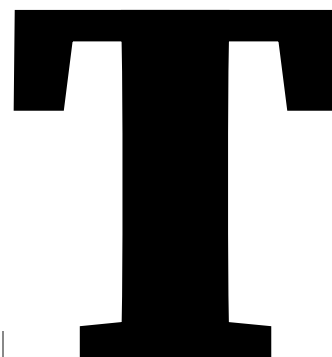
Tau | T | U+03A4



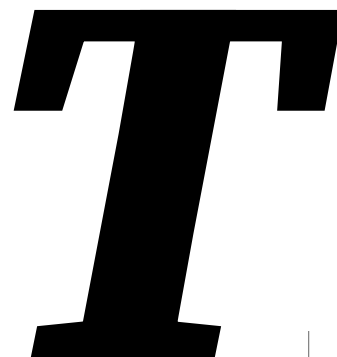
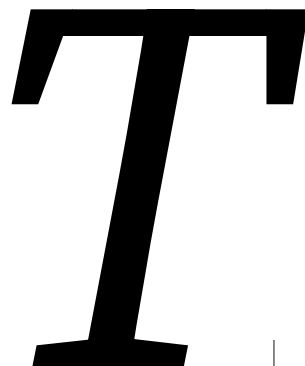
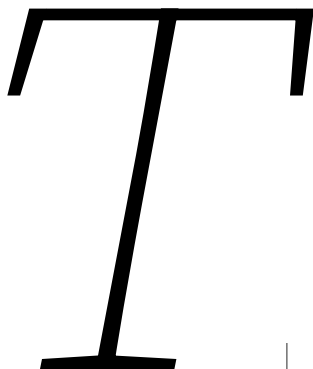
0



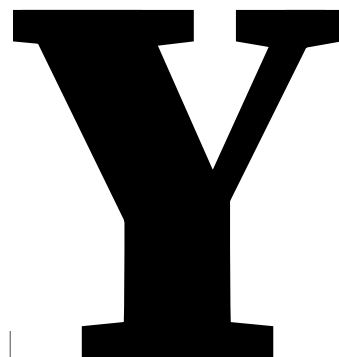
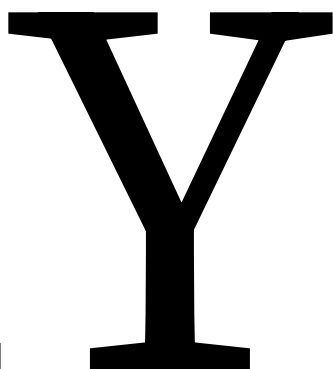
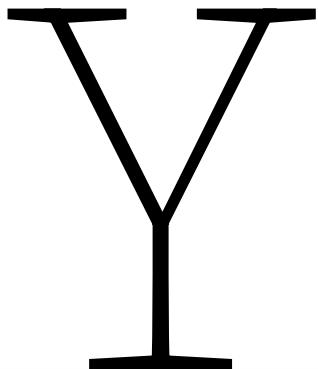
1



2



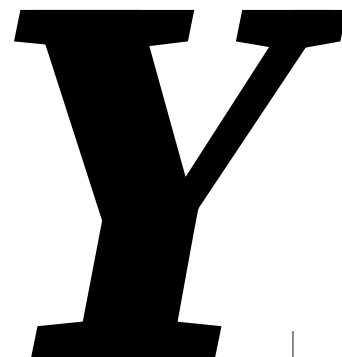
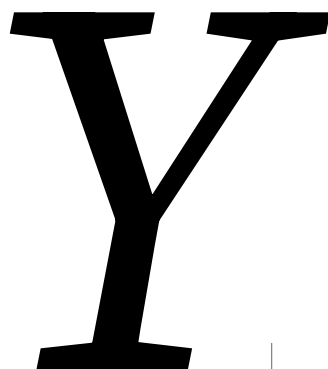
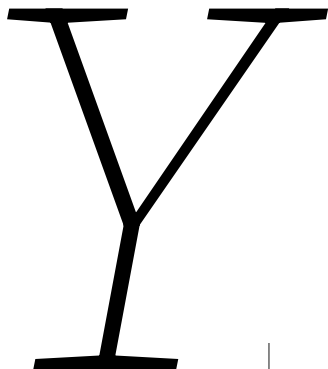
Upsilon | Y | U+03A5



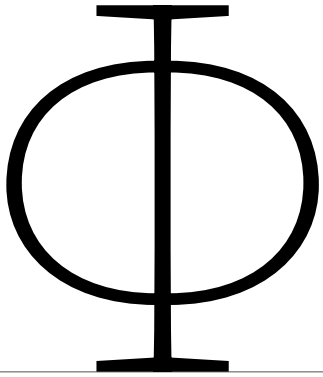
0

1

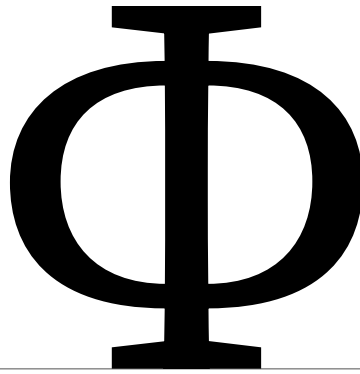
2



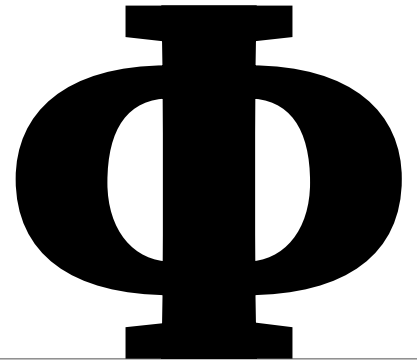
Phi | Φ | U+03A6



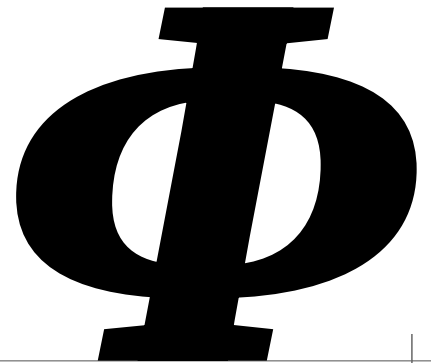
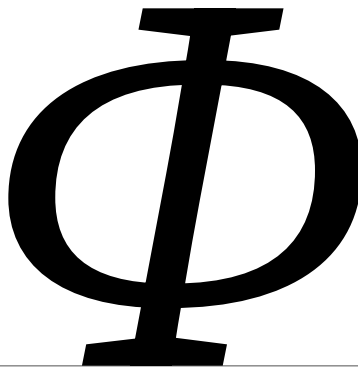
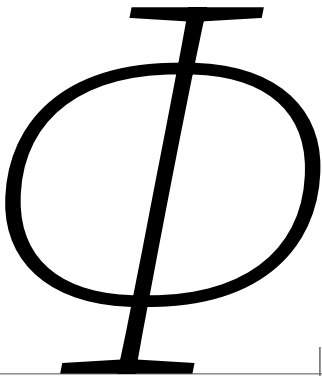
0



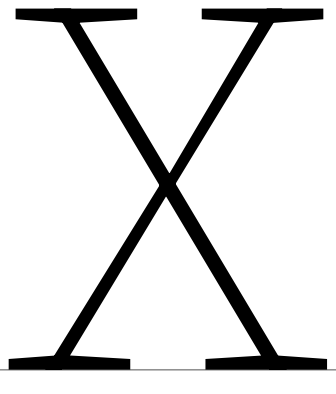
1



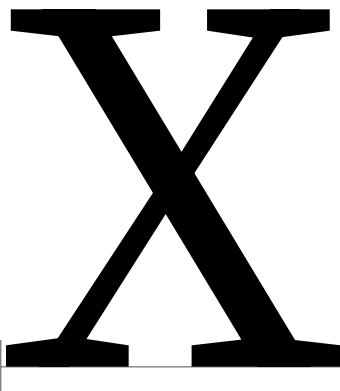
2



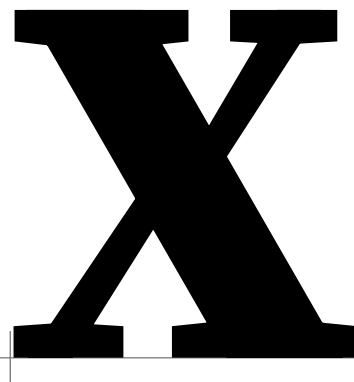
Chi | X | U+03A7



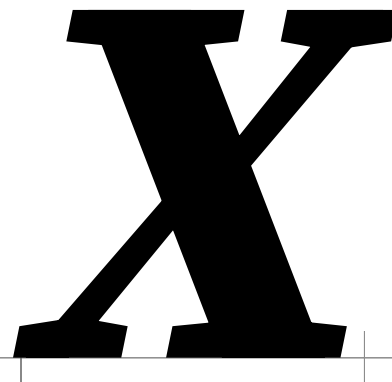
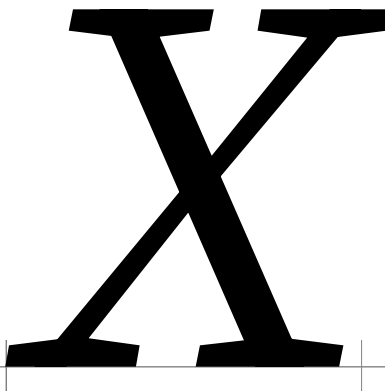
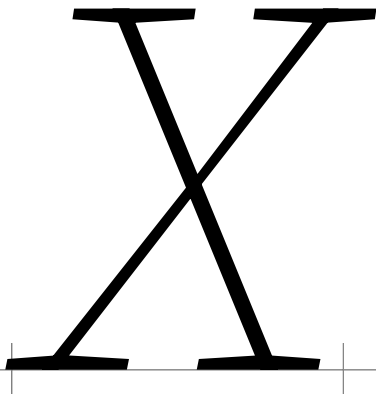
0



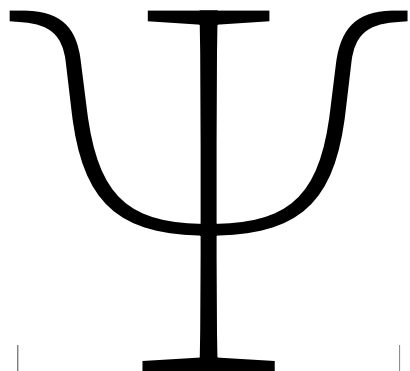
1



2

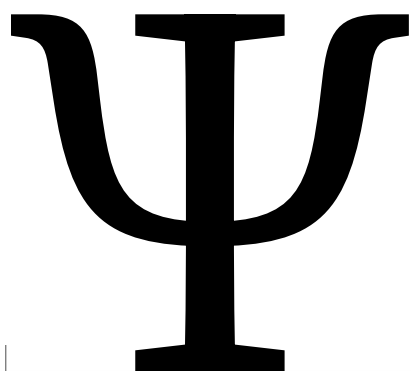


Psi | Ψ | U+03A8



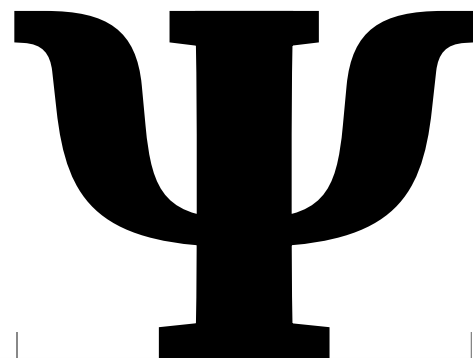
Ψ

0



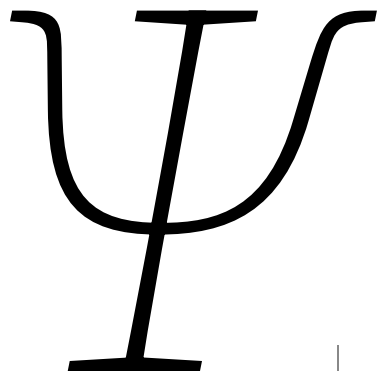
Ψ

1

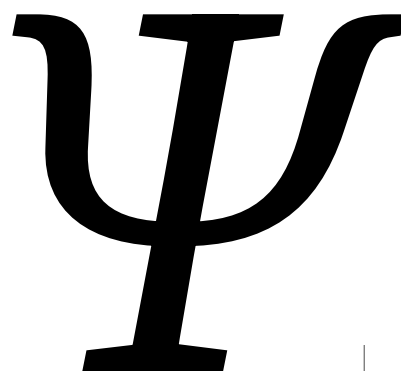


Ψ

2



Ψ

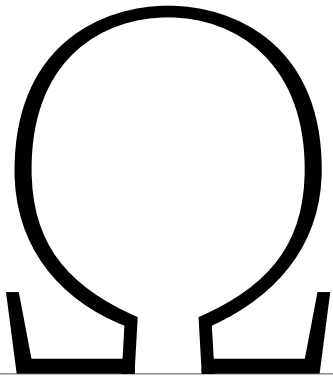


Ψ

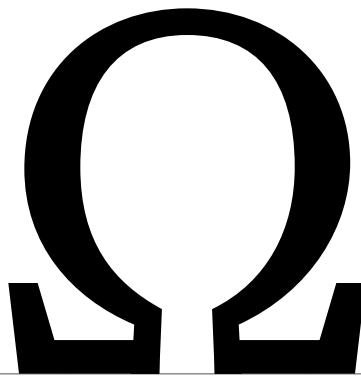


Ψ

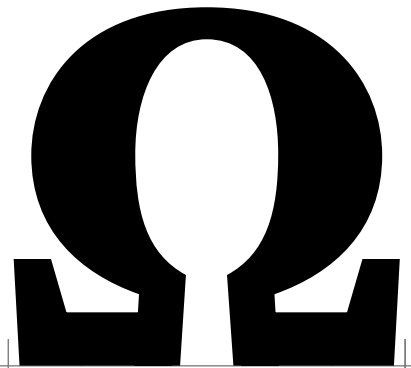
Omega | Ω | U+03A9



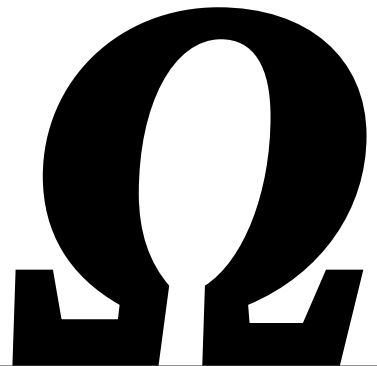
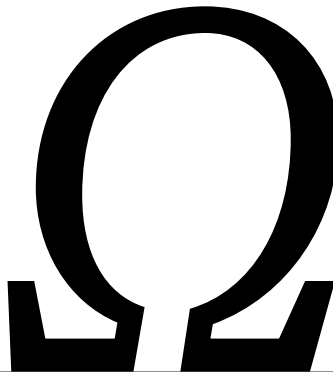
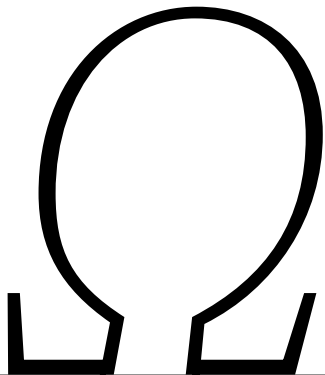
0



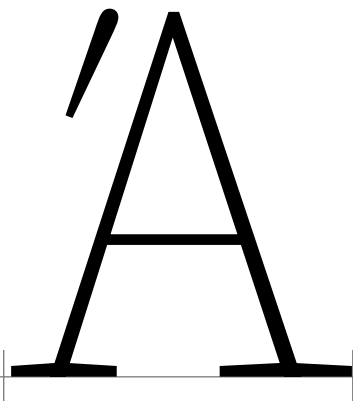
1



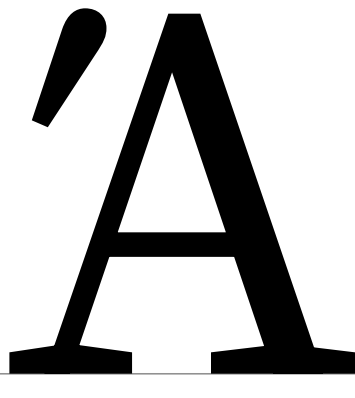
2



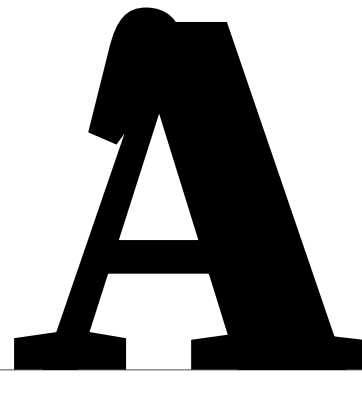
Alphatonos | Ā | U+0386



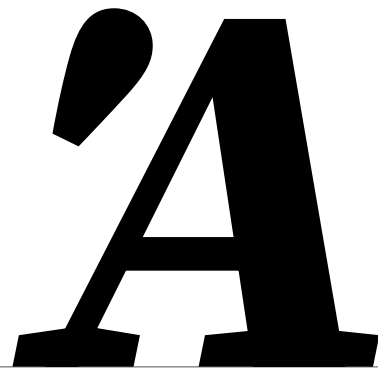
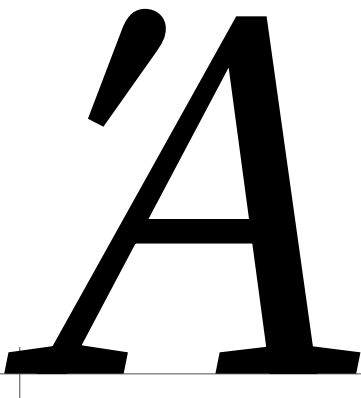
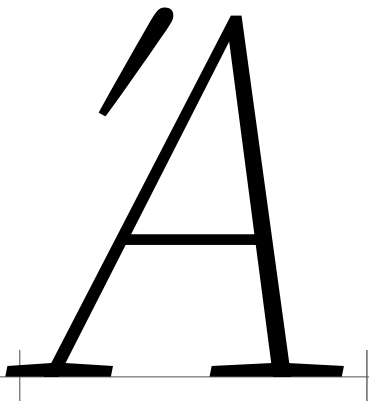
0



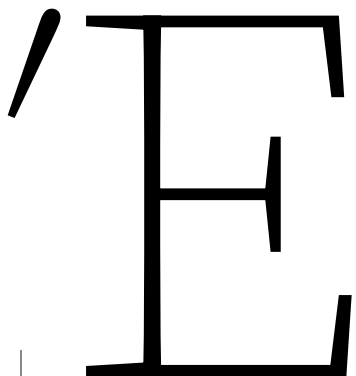
1



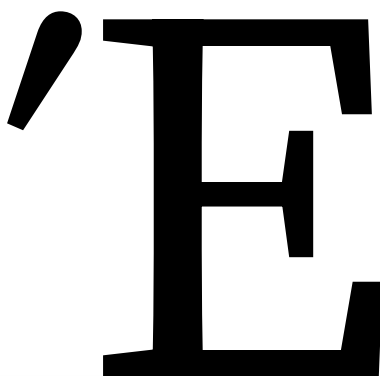
2



Epsilontonos | Ę | U+0388



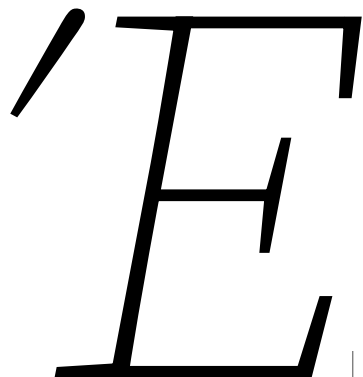
0



1



2



0



1



2

Etatonos | Ħ | U+0389



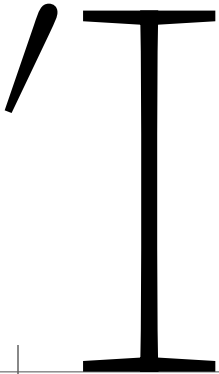
0

1

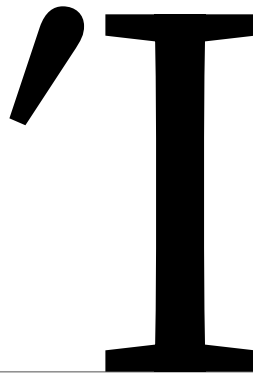
2



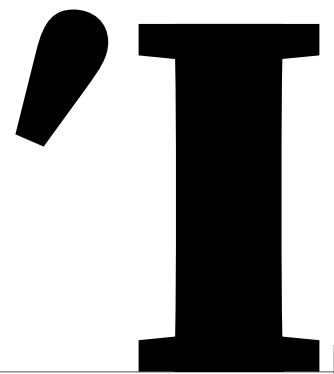
Iotatonos | Ī | U+038A



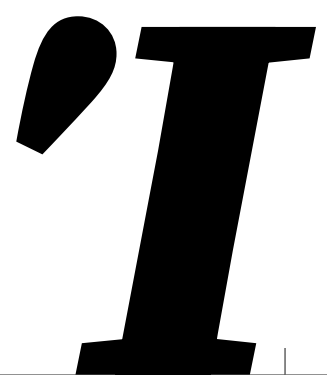
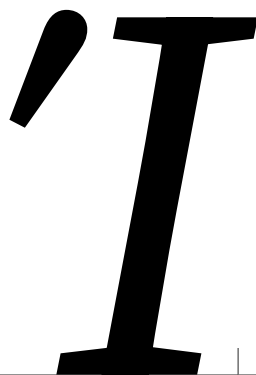
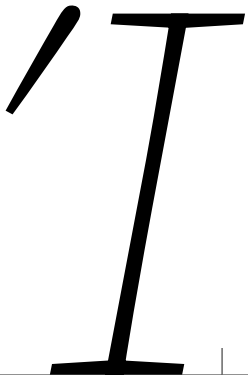
0



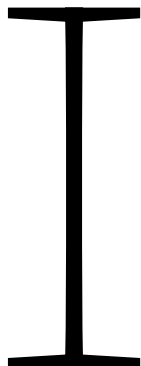
1



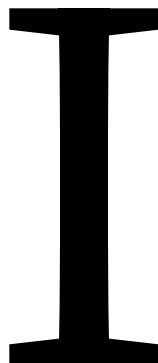
2



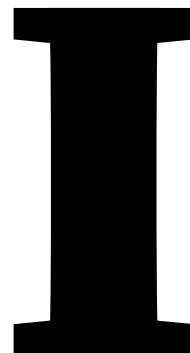
Iotadieresis | Ï | U+03AA



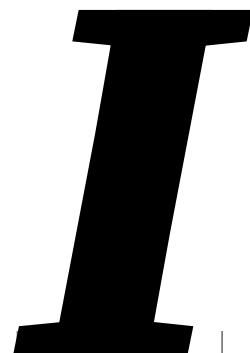
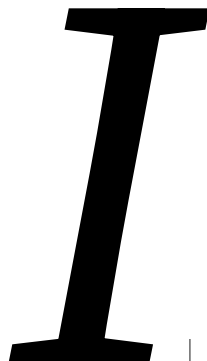
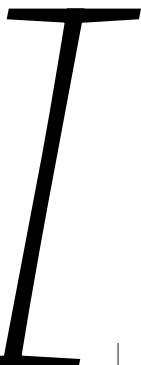
0



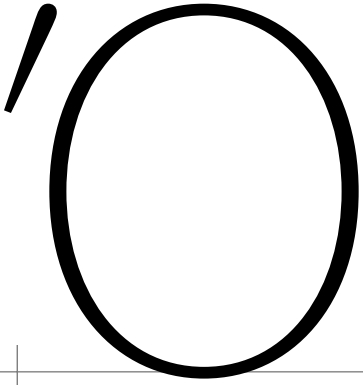
1



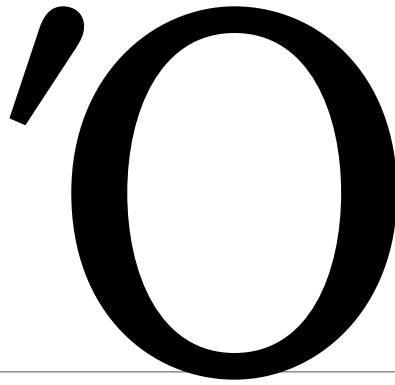
2



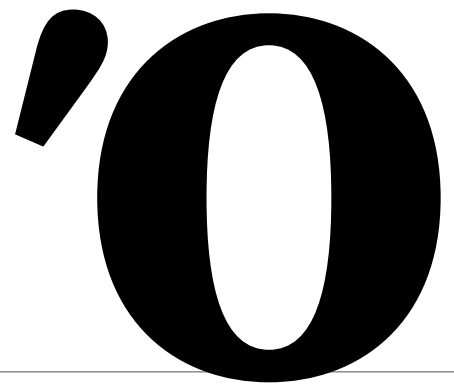
Omicrontonos | 0 | U+038C



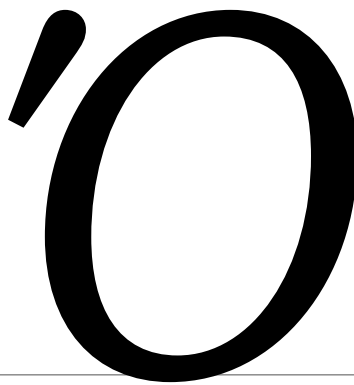
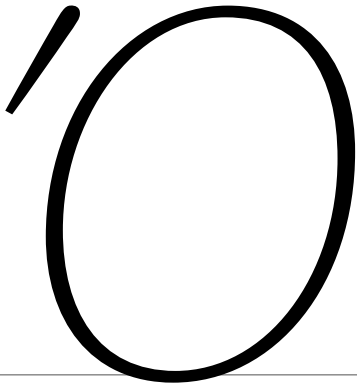
0



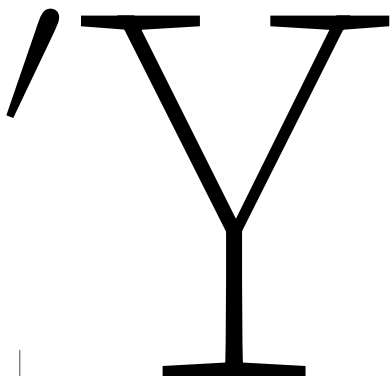
1



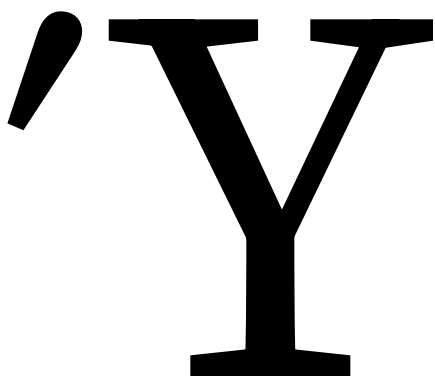
2



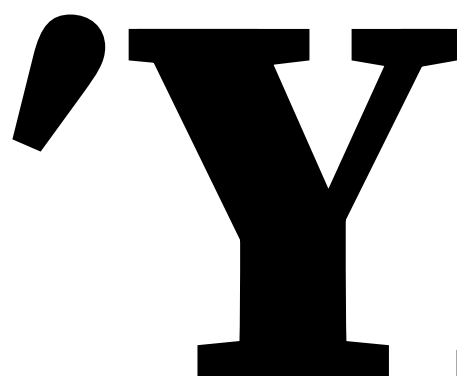
Upsilontonos | Υ | U+038E



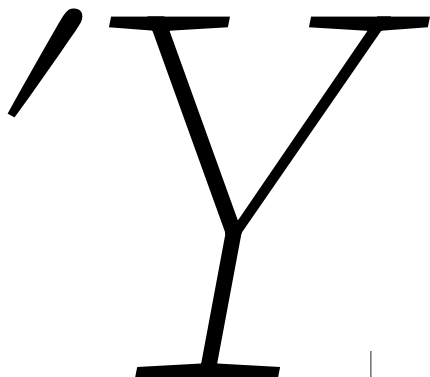
0



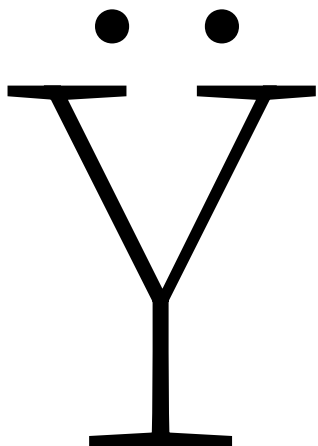
1



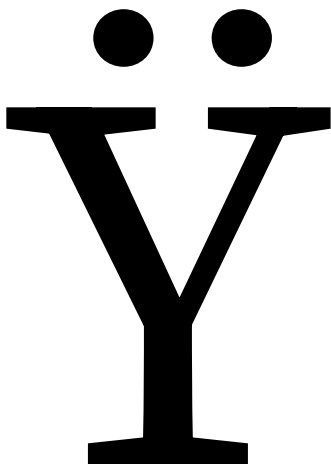
2



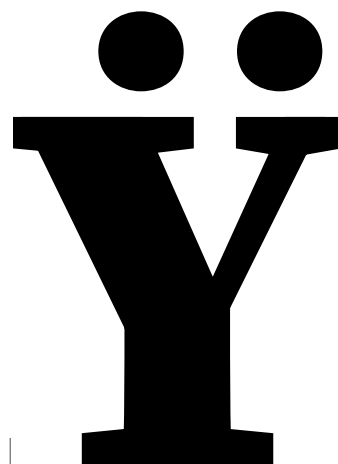
Upsilondieresis | Ÿ | U+03AB



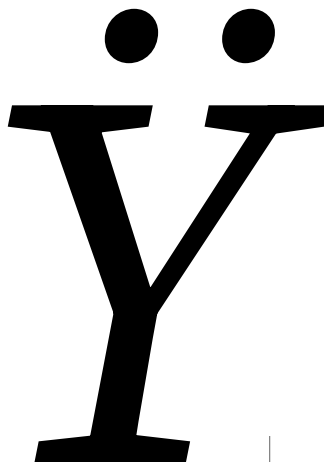
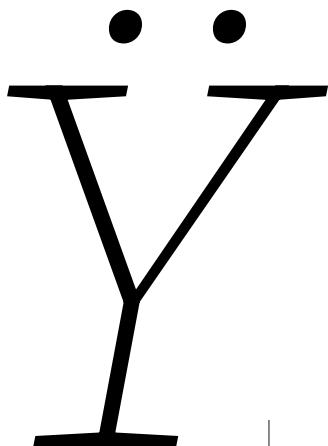
0



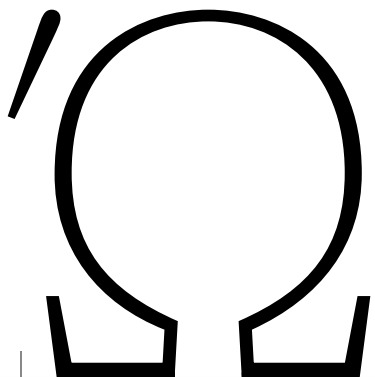
1



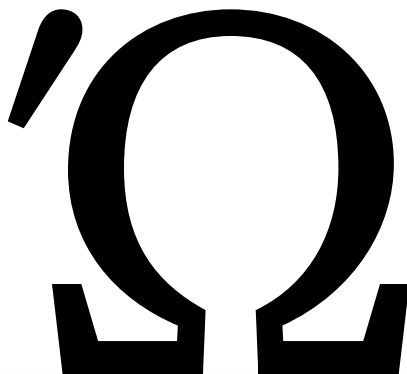
2



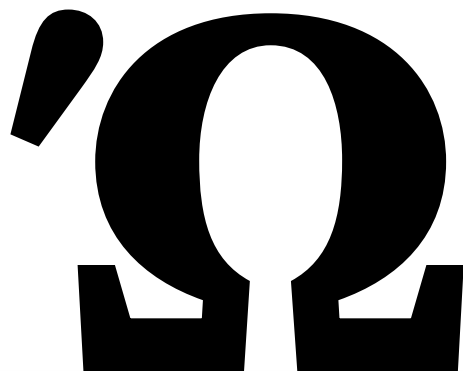
Omegatonos | Ω | U+038F



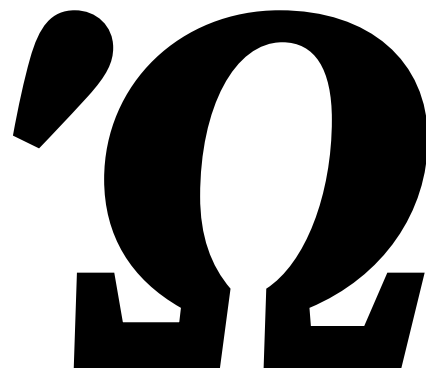
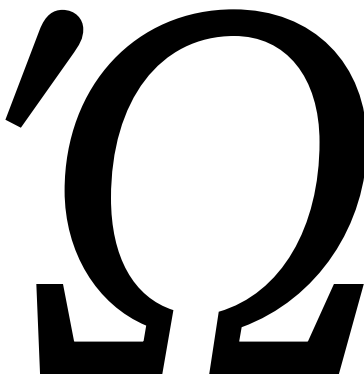
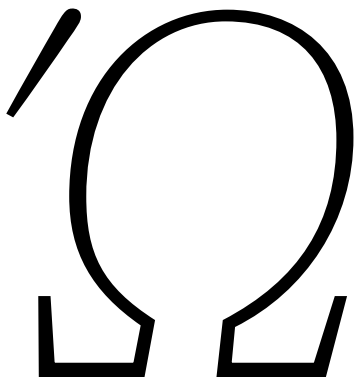
0




1



2

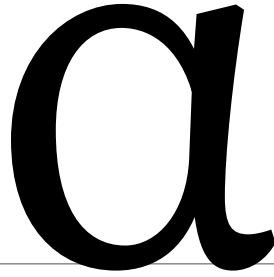


alpha | α | U+03B1



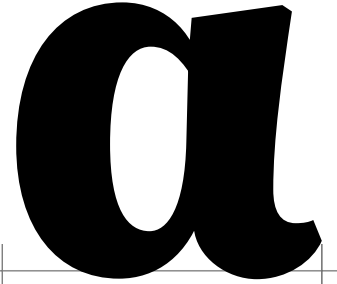
A thin, elegant script version of the Greek letter alpha, featuring a large, rounded bowl and a long, sweeping tail that curves to the right.

0



A medium-weight script version of the Greek letter alpha, with a rounded bowl and a tail that curves to the right.

1

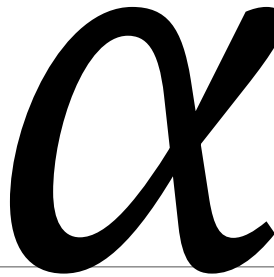


A thick, bold script version of the Greek letter alpha, with a rounded bowl and a tail that curves to the right.

2



A thin, cursive version of the Greek letter alpha, with a rounded bowl and a tail that curves to the right.

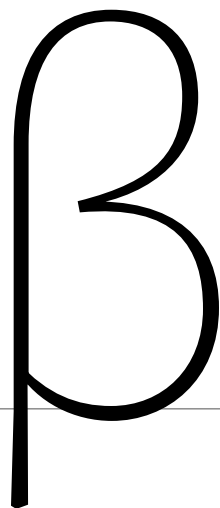


A medium-weight cursive version of the Greek letter alpha, with a rounded bowl and a tail that curves to the right.



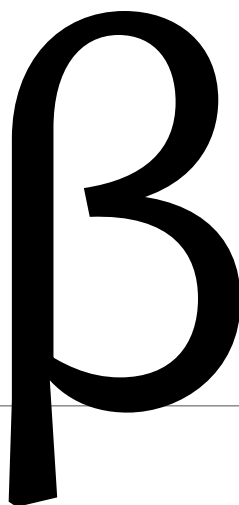
A thick, bold cursive version of the Greek letter alpha, with a rounded bowl and a tail that curves to the right.

beta | β | U+03B2



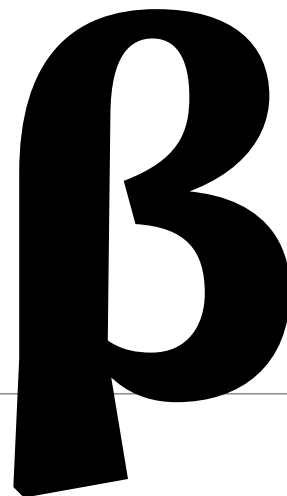
A thin, upright, black outline of the Greek letter beta (β). The letter is positioned on a horizontal baseline with tick marks. The vertical stem is straight and thin, and the bowl is simple and open.

0



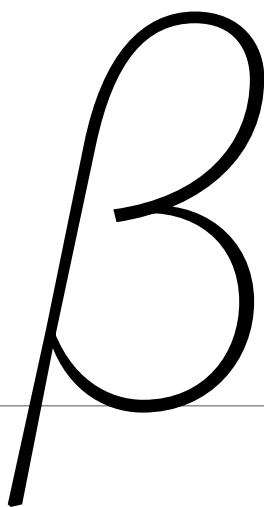
A medium-weight, upright, black outline of the Greek letter beta (β). The letter is positioned on a horizontal baseline with tick marks. The vertical stem is straight and medium-thick, and the bowl is simple and open.

1



A thick, upright, black outline of the Greek letter beta (β). The letter is positioned on a horizontal baseline with tick marks. The vertical stem is straight and very thick, and the bowl is simple and open.

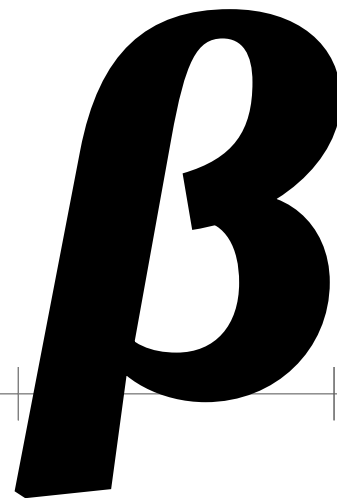
2



A thin, slanted, black outline of the Greek letter beta (β). The letter is positioned on a horizontal baseline with tick marks. The vertical stem is slanted to the left and thin, and the bowl is simple and open.

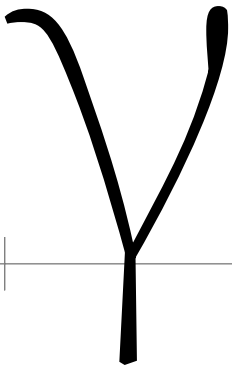


A medium-weight, slanted, black outline of the Greek letter beta (β). The letter is positioned on a horizontal baseline with tick marks. The vertical stem is slanted to the left and medium-thick, and the bowl is simple and open.

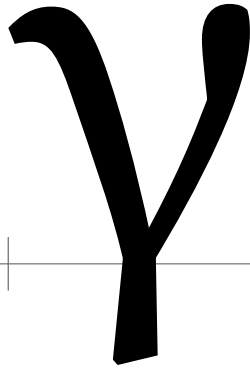


A thick, slanted, black outline of the Greek letter beta (β). The letter is positioned on a horizontal baseline with tick marks. The vertical stem is slanted to the left and very thick, and the bowl is simple and open.

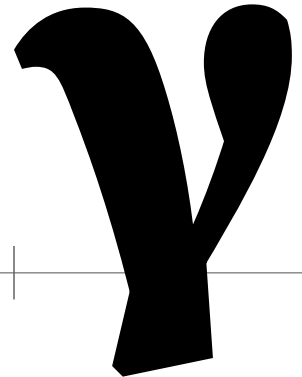
gamma | γ | U+03B3



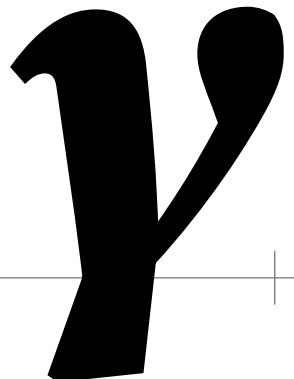
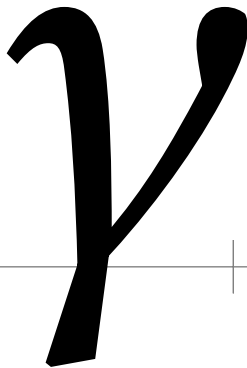
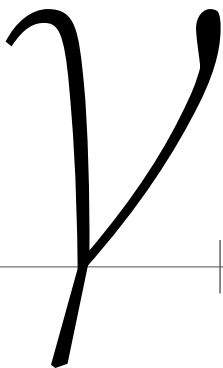
0



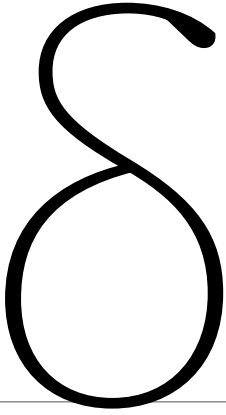
1



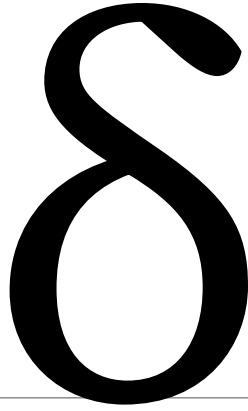
2



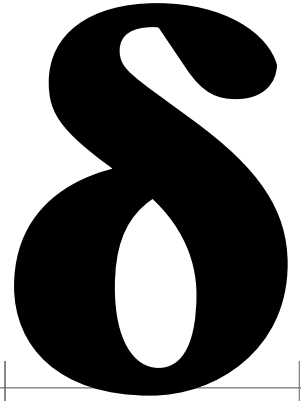
delta | δ | U+03B4



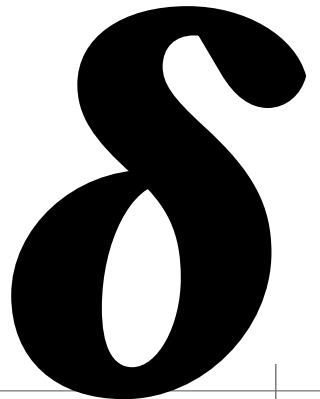
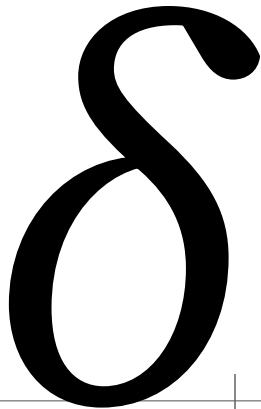
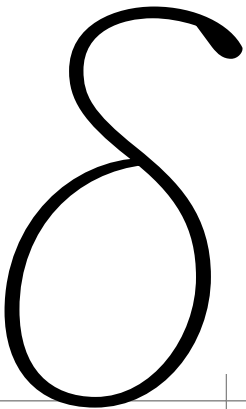
0



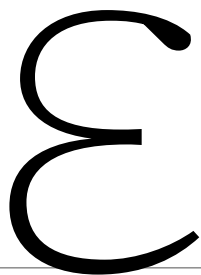
1



2



epsilon | ε | U+03B5

A thin, elegant black epsilon glyph with a light, airy feel. It features a delicate curve at the top and a simple, open bottom.

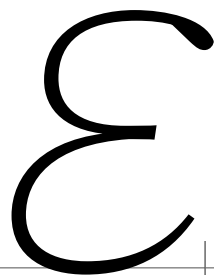
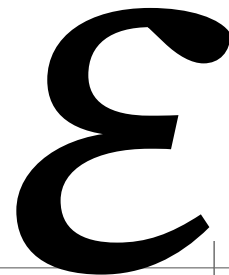
0

A medium-weight black epsilon glyph, balanced and clear. It has a smooth curve and a well-defined bottom.

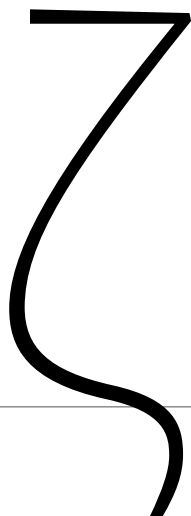
1

A thick, bold black epsilon glyph with a heavy, solid appearance. The curves are pronounced and the bottom is very dark.

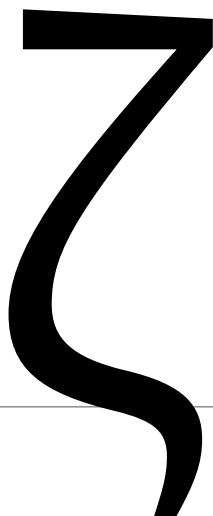
2

A thin, elegant black epsilon glyph, identical to the first one in the row.A medium-weight black epsilon glyph, identical to the second one in the row.A thick, bold black epsilon glyph, identical to the third one in the row.

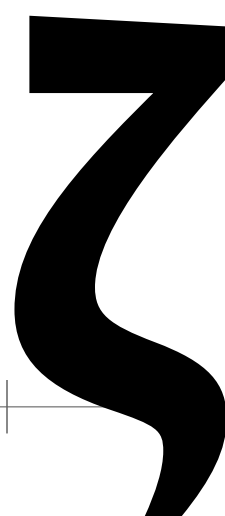
zeta | ζ | U+03B6



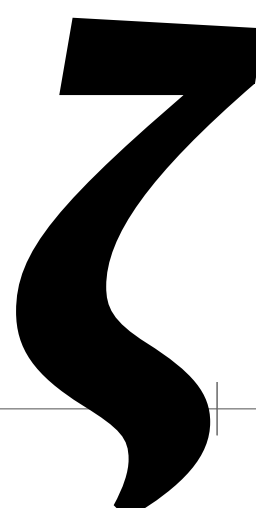
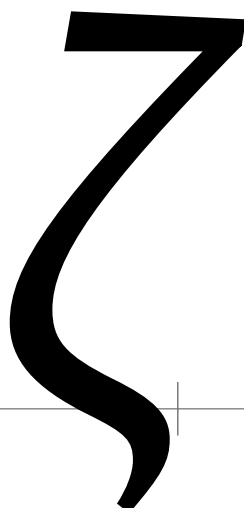
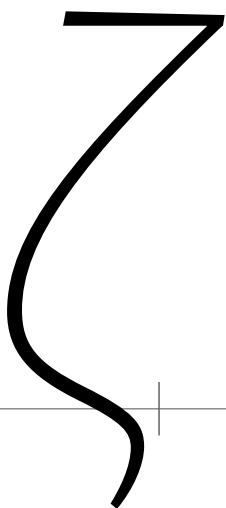
0



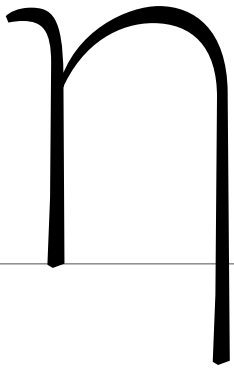
1



2

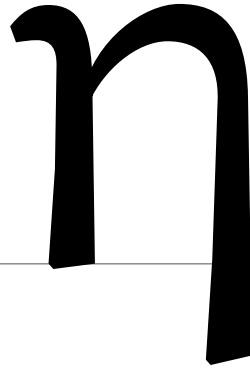


eta | η | U+03B7



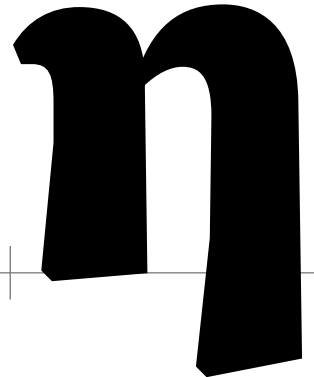
A thin, elegant cursive uppercase letter 'η' with a light, airy feel. The top curve is delicate, and the vertical stem is thin and slightly curved to the right.

0



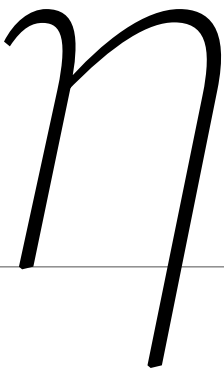
A medium-weight cursive uppercase letter 'η'. The curves are more pronounced than in the first style, and the vertical stem is thicker and more upright.

1



A bold, heavy cursive uppercase letter 'η'. The curves are very thick and rounded, and the vertical stem is extremely thick and slightly slanted to the right.

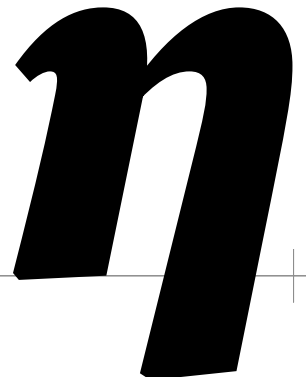
2



A thin, elegant cursive uppercase letter 'η' slanted to the right. The top curve is delicate, and the vertical stem is thin and curved to the right.

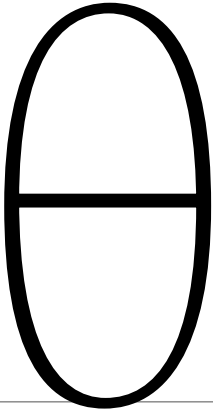


A medium-weight cursive uppercase letter 'η' slanted to the right. The curves are more pronounced than in the first style, and the vertical stem is thicker and more upright.

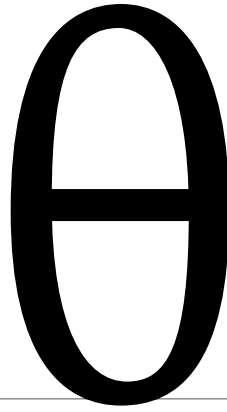


A bold, heavy cursive uppercase letter 'η' slanted to the right. The curves are very thick and rounded, and the vertical stem is extremely thick and slightly slanted to the right.

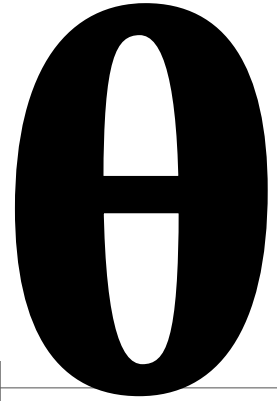
theta | θ | U+03B8



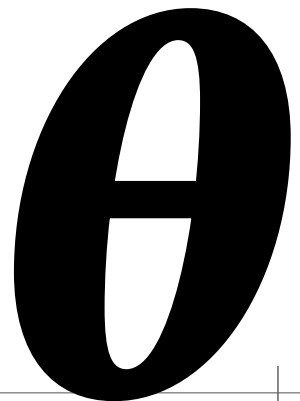
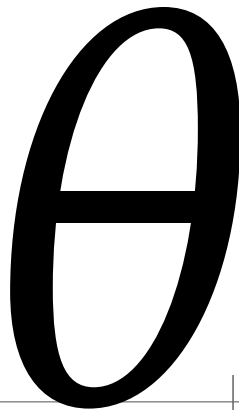
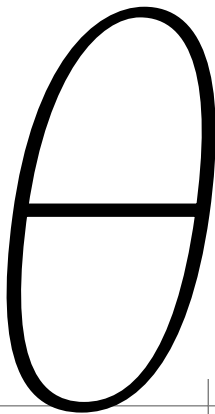
0



1



2



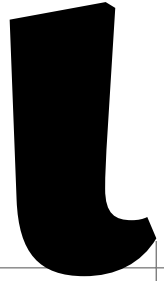
iota | ɿ | U+03B9



0



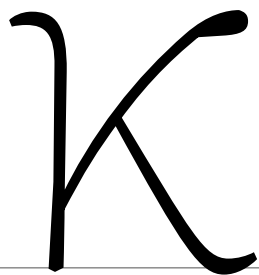
1



2

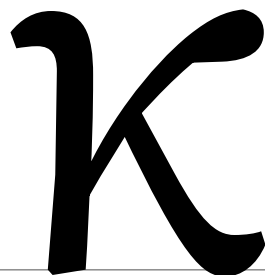


kappa | κ | U+03BA



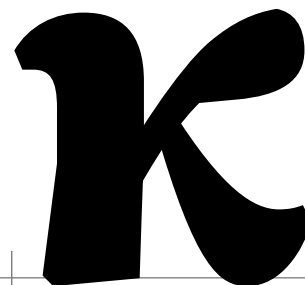
κ

0



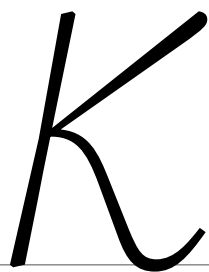
κ

1

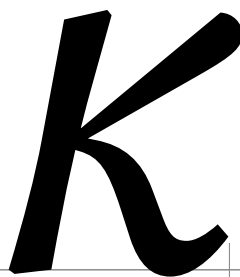


κ

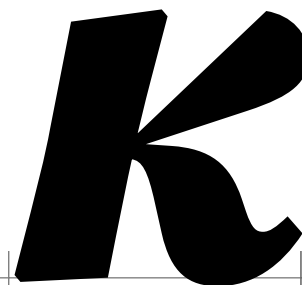
2



κ

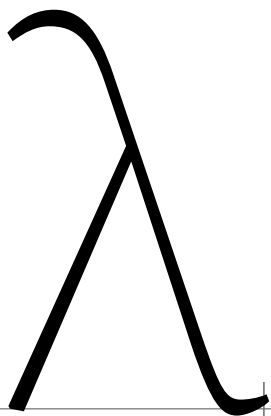


κ

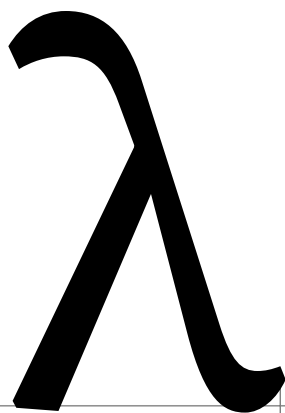


κ

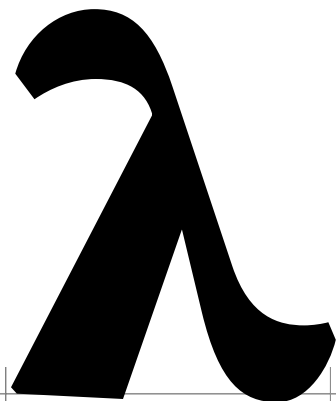
lambda | λ | U+03BB



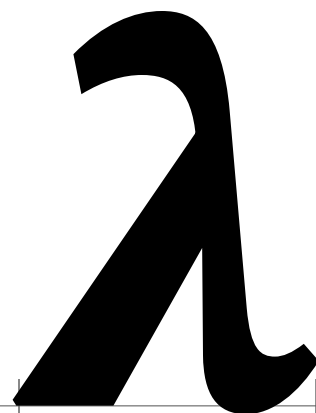
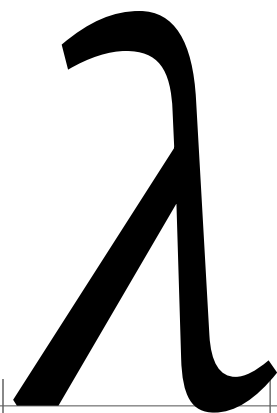
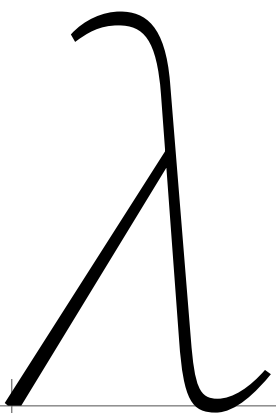
0



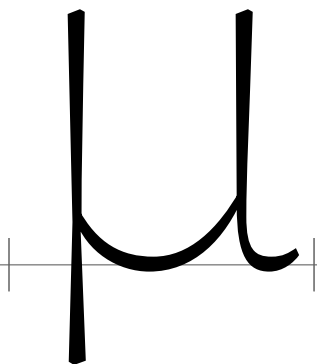
1



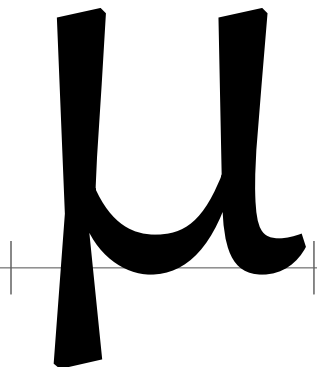
2



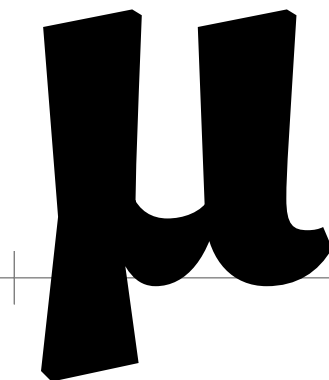
mu | μ | U+03BC



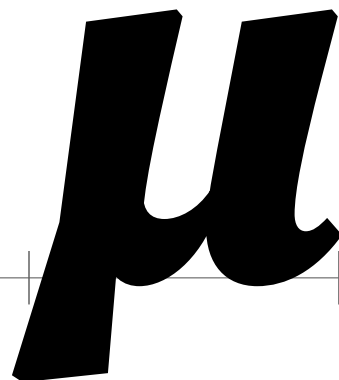
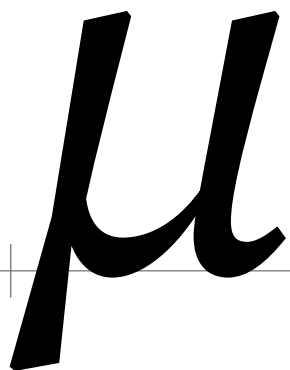
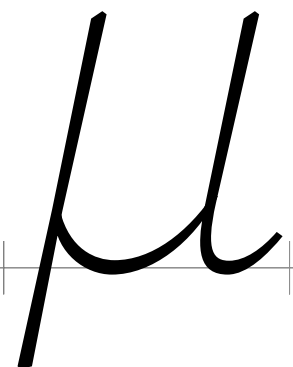
0



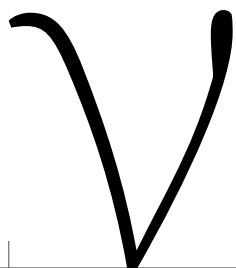
1



2

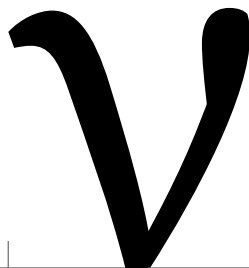


nu | v | U+03BD



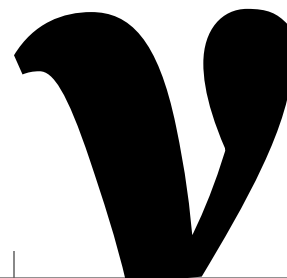
A thin, elegant cursive lowercase letter 'v' with a light stroke weight. It features a small loop at the top left and a sharp point at the bottom.

0



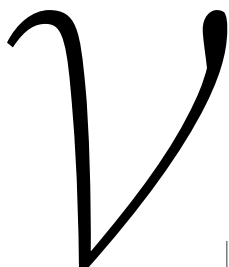
A medium-weight cursive lowercase letter 'v' with a moderate stroke thickness. It maintains the elegant cursive style with a loop and a sharp point.

1

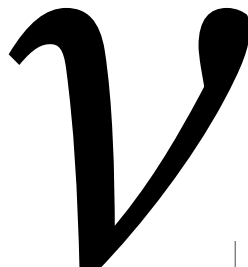


A thick, bold cursive lowercase letter 'v' with a heavy stroke weight. The cursive style is still present but more pronounced and solid.

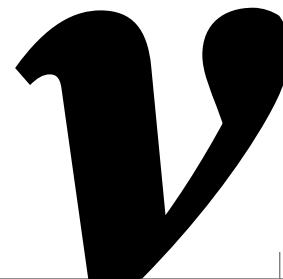
2



A thin, elegant cursive lowercase letter 'v' with a light stroke weight, identical to the first row.

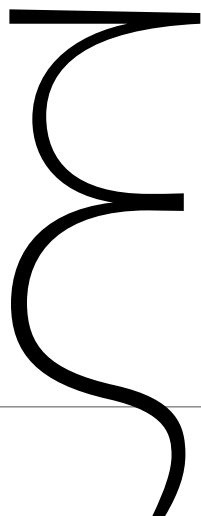


A medium-weight cursive lowercase letter 'v' with a moderate stroke thickness, identical to the first row.

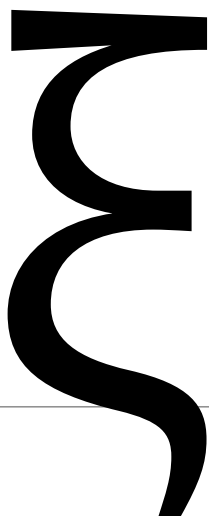


A thick, bold cursive lowercase letter 'v' with a heavy stroke weight, identical to the first row.

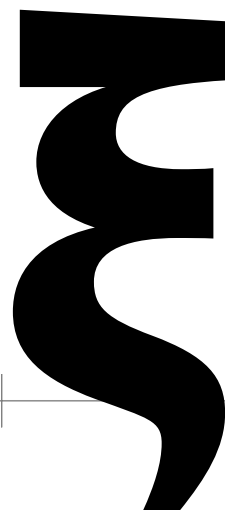
xi | ξ | U+03BE



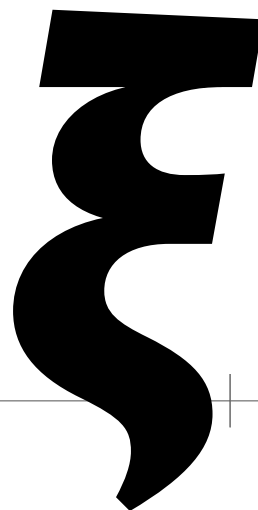
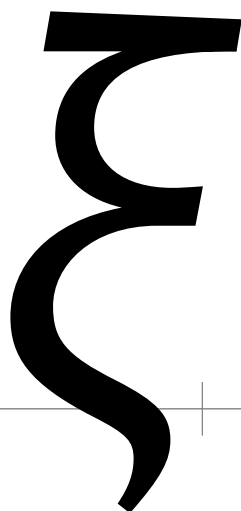
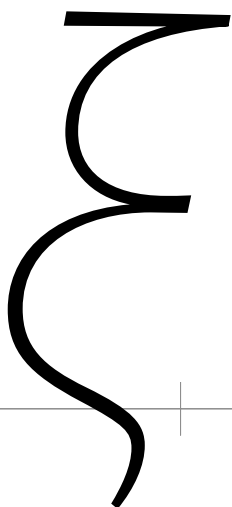
0



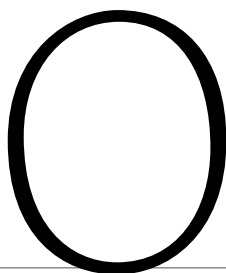
1



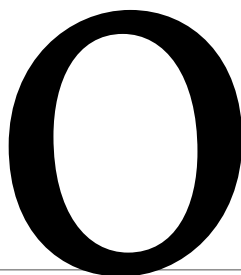
2



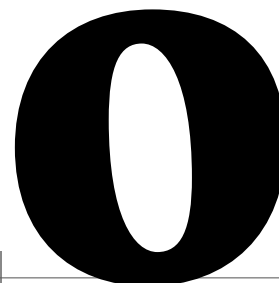
omicron | o | U+03BF



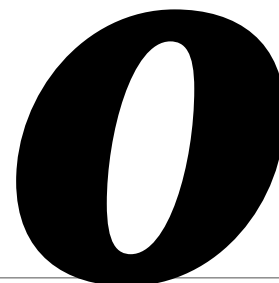
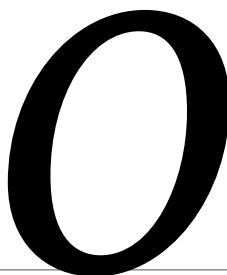
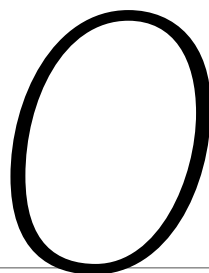
0



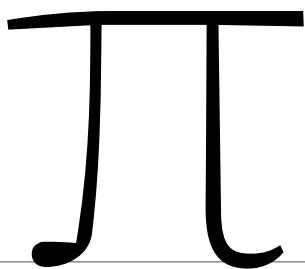
1



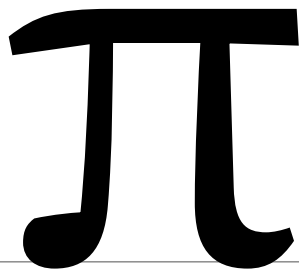
2



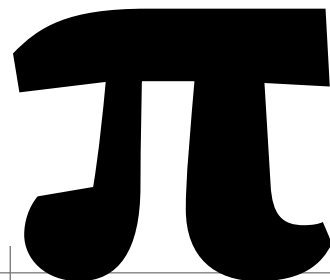
pi | π | U+03C0

A black, uppercase pi symbol with a thin, slightly curved top bar and two vertical stems that curve slightly at the bottom. It is positioned on a horizontal baseline with vertical tick marks on either side.

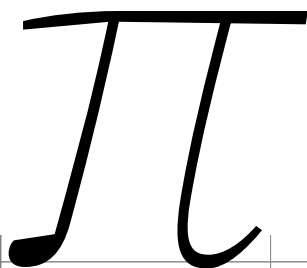
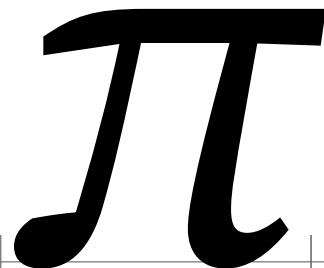
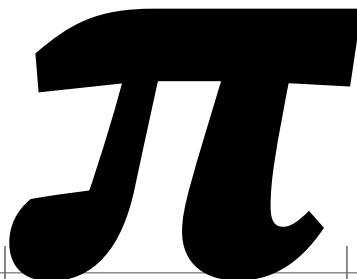
0

A black, uppercase pi symbol with a thick, slightly curved top bar and two vertical stems that curve slightly at the bottom. It is positioned on a horizontal baseline with vertical tick marks on either side.

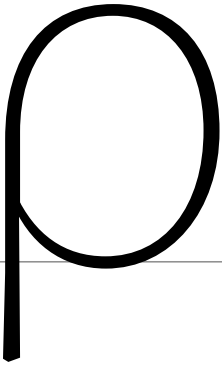
1

A black, uppercase pi symbol with a very thick, slightly curved top bar and two vertical stems that curve slightly at the bottom. It is positioned on a horizontal baseline with vertical tick marks on either side.

2

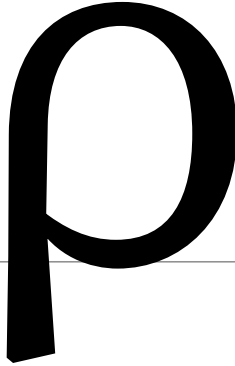
A black, lowercase pi symbol with a thin, slightly curved top bar and two vertical stems that curve slightly at the bottom. It is positioned on a horizontal baseline with vertical tick marks on either side.A black, lowercase pi symbol with a thick, slightly curved top bar and two vertical stems that curve slightly at the bottom. It is positioned on a horizontal baseline with vertical tick marks on either side.A black, lowercase pi symbol with a very thick, slightly curved top bar and two vertical stems that curve slightly at the bottom. It is positioned on a horizontal baseline with vertical tick marks on either side.

rho | ρ | U+03C1



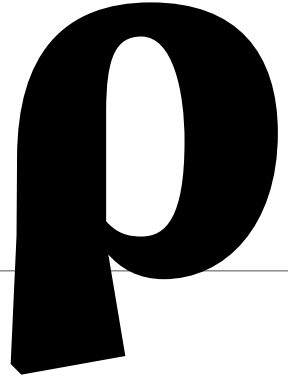
A thin, black, uppercase rho character. The vertical stem is straight and ends in a sharp point. The bowl is a simple, open circle.

0



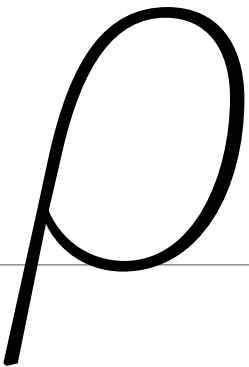
A medium-weight, black, uppercase rho character. The vertical stem is slightly curved to the right and ends in a blunt tip. The bowl is a simple, open circle.

1

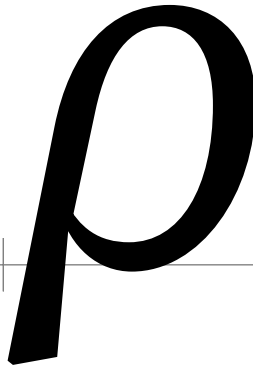


A thick, black, uppercase rho character. The vertical stem is curved to the right and ends in a blunt tip. The bowl is a simple, open circle.

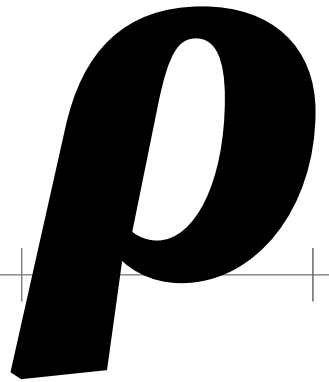
2



A thin, black, uppercase rho character. The vertical stem is slanted to the left and ends in a sharp point. The bowl is a simple, open circle.

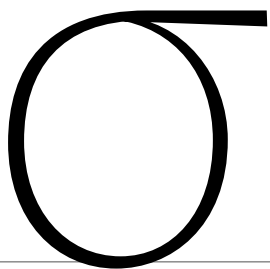


A medium-weight, black, uppercase rho character. The vertical stem is slanted to the left and ends in a blunt tip. The bowl is a simple, open circle.

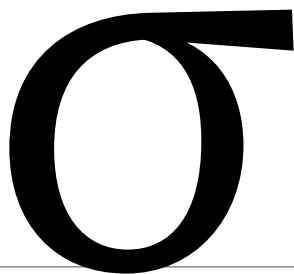


A thick, black, uppercase rho character. The vertical stem is slanted to the left and ends in a blunt tip. The bowl is a simple, open circle.

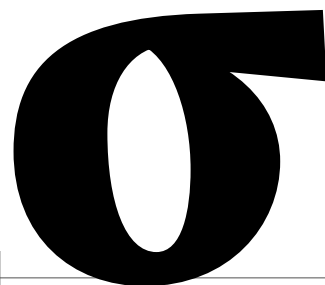
sigma | σ | U+03C3

A thin, elegant sigma glyph with a light, airy feel. It features a delicate loop and a thin, slightly curved tail that ends in a small hook. The overall appearance is that of a light, handwritten-style font.

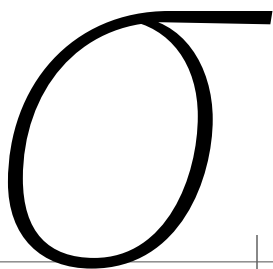
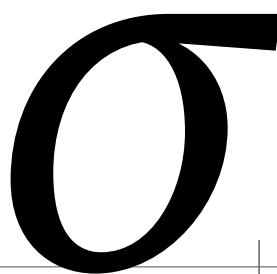
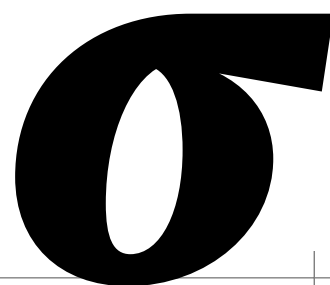
0

A medium-weight sigma glyph with a balanced, classic appearance. The loop is well-defined, and the tail is a smooth, slightly curved line that ends in a small hook. It has a clean, professional look.

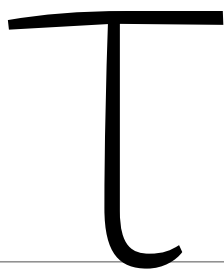
1

A thick, bold sigma glyph with a strong, assertive presence. The loop is very dark and well-defined, and the tail is a thick, slightly curved line that ends in a prominent hook. It has a heavy, impactful look.

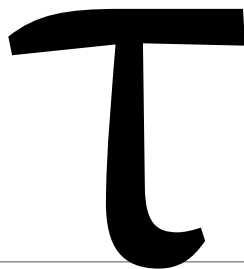
2

A thin, elegant sigma glyph, identical to the one in the top row. It features a delicate loop and a thin, slightly curved tail that ends in a small hook. The overall appearance is that of a light, handwritten-style font.A medium-weight sigma glyph, identical to the one in the top row. The loop is well-defined, and the tail is a smooth, slightly curved line that ends in a small hook. It has a clean, professional look.A thick, bold sigma glyph, identical to the one in the top row. The loop is very dark and well-defined, and the tail is a thick, slightly curved line that ends in a prominent hook. It has a heavy, impactful look.

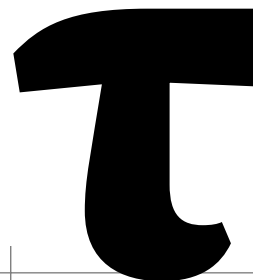
tau | τ | U+03C4

A thin, black, uppercase tau character with a simple, clean design. It features a horizontal top bar and a vertical stem that curves slightly at the bottom.

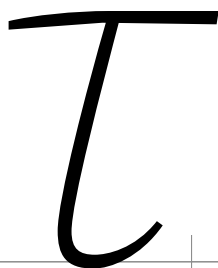
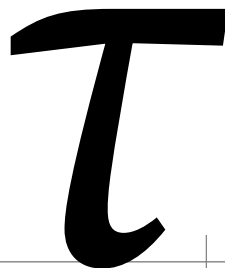
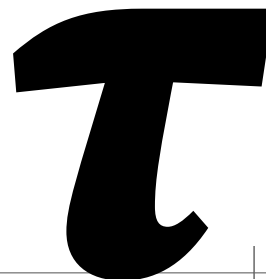
0

A medium-weight, black, uppercase tau character. The top bar is slightly thicker and more rounded than in the first glyph. The stem is also thicker and has a more pronounced curve at the bottom.

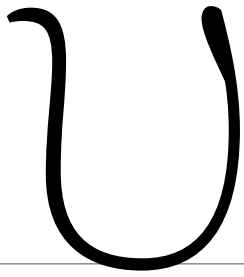
1

A very bold, black, uppercase tau character. The top bar is thick and has a distinct, rounded, almost 'T'-like shape. The stem is also very thick and has a heavy, rounded curve at the bottom.

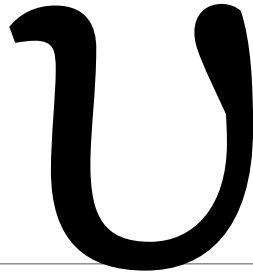
2

A thin, black, uppercase tau character in a cursive or script style. The top bar is thin and slightly slanted. The stem is thin and has a graceful, flowing curve at the bottom.A medium-weight, black, uppercase tau character in a cursive style. The top bar is thicker and more rounded. The stem is also thicker and has a more pronounced, rounded curve at the bottom.A very bold, black, uppercase tau character in a cursive style. The top bar is thick and has a very rounded, almost 'T'-like shape. The stem is also very thick and has a heavy, rounded curve at the bottom.

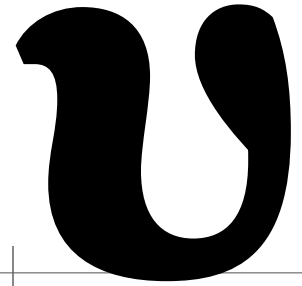
upsilon | υ | U+03C5

A thin, black outline of the Greek letter Upsilon (υ) in its standard form, positioned above a horizontal baseline.

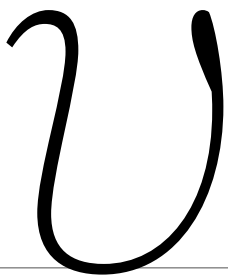
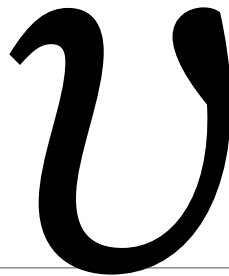
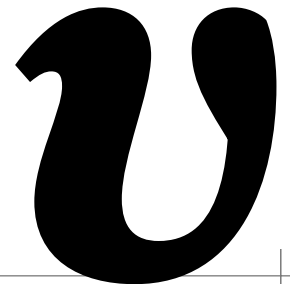
0

A medium-weight, black outline of the Greek letter Upsilon (υ) in its standard form, positioned above a horizontal baseline.

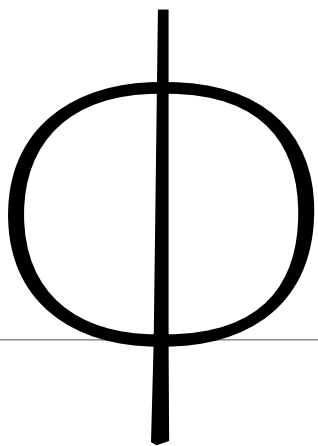
1

A thick, black outline of the Greek letter Upsilon (υ) in its standard form, positioned above a horizontal baseline.

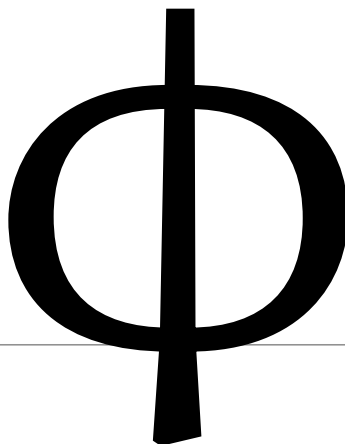
2

A thin, black outline of the Greek letter Upsilon (υ) with a decorative swash on the left side, positioned above a horizontal baseline.A medium-weight, black outline of the Greek letter Upsilon (υ) with a decorative swash on the left side, positioned above a horizontal baseline.A thick, black outline of the Greek letter Upsilon (υ) with a decorative swash on the left side, positioned above a horizontal baseline.

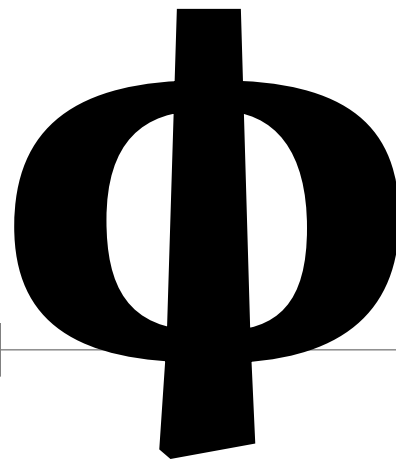
phi | φ | U+03C6



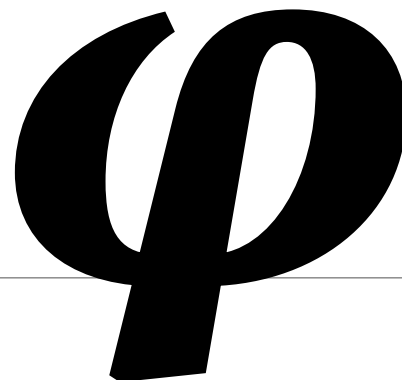
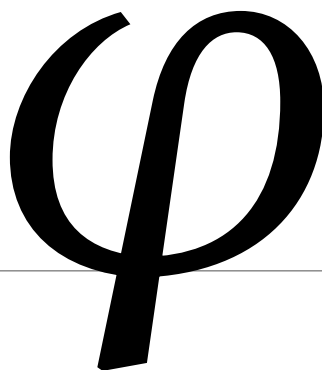
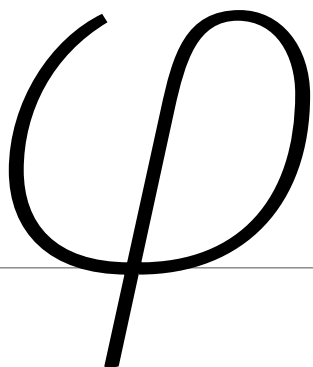
0



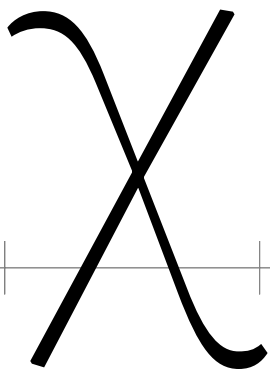
1



2

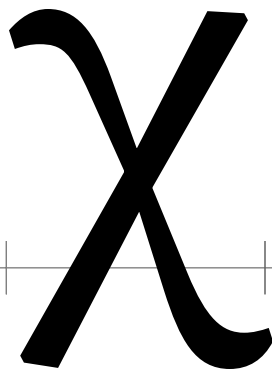


chi | x | U+03C7



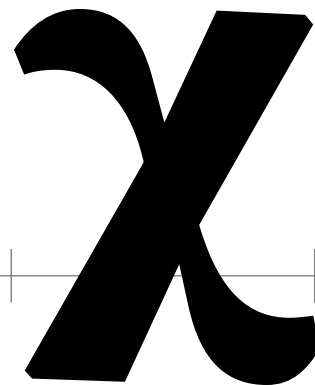
A thin, elegant cursive lowercase letter 'x' is shown. It features a light gray horizontal baseline with two vertical tick marks on either side. The letter is formed by two strokes: the first starts with a small upward curve, then descends and curves to the right; the second stroke starts higher, descends more steeply, and curves to the left, crossing the first stroke.

0



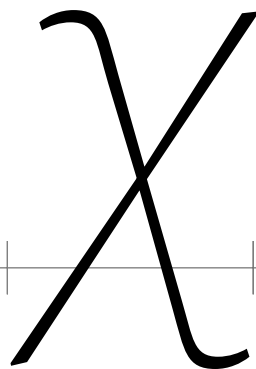
A medium-weight cursive lowercase letter 'x' is shown. It features a light gray horizontal baseline with two vertical tick marks on either side. The letter is formed by two strokes: the first starts with a small upward curve, then descends and curves to the right; the second stroke starts higher, descends more steeply, and curves to the left, crossing the first stroke.

1

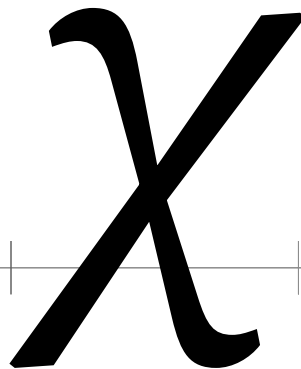


A thick, bold cursive lowercase letter 'x' is shown. It features a light gray horizontal baseline with two vertical tick marks on either side. The letter is formed by two strokes: the first starts with a small upward curve, then descends and curves to the right; the second stroke starts higher, descends more steeply, and curves to the left, crossing the first stroke.

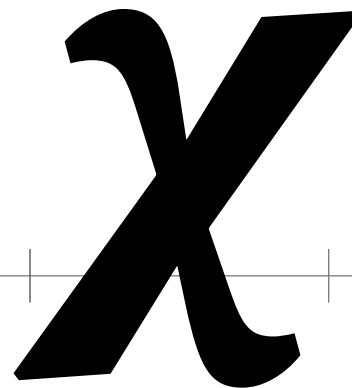
2



A thin, elegant cursive lowercase letter 'x' is shown. It features a light gray horizontal baseline with two vertical tick marks on either side. The letter is formed by two strokes: the first starts with a small upward curve, then descends and curves to the right; the second stroke starts higher, descends more steeply, and curves to the left, crossing the first stroke.



A medium-weight cursive lowercase letter 'x' is shown. It features a light gray horizontal baseline with two vertical tick marks on either side. The letter is formed by two strokes: the first starts with a small upward curve, then descends and curves to the right; the second stroke starts higher, descends more steeply, and curves to the left, crossing the first stroke.



A thick, bold cursive lowercase letter 'x' is shown. It features a light gray horizontal baseline with two vertical tick marks on either side. The letter is formed by two strokes: the first starts with a small upward curve, then descends and curves to the right; the second stroke starts higher, descends more steeply, and curves to the left, crossing the first stroke.

psi | ψ | U+03C8

A thin, black outline version of the Greek letter psi (ψ). The letter is centered on a horizontal baseline with tick marks on either side. The vertical stem is a simple vertical line, and the two curved arms are also thin outlines.

0

A medium-weight, solid black version of the Greek letter psi (ψ). The letter is centered on a horizontal baseline with tick marks on either side. The vertical stem and curved arms are thicker than in the first version.

1

A thick, bold, solid black version of the Greek letter psi (ψ). The letter is centered on a horizontal baseline with tick marks on either side. The vertical stem and curved arms are significantly thicker than in the previous versions.

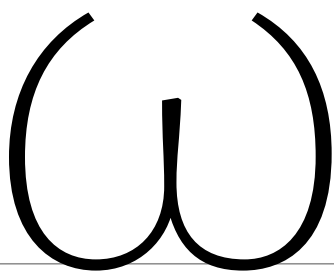
2

A thin, black outline version of the Greek letter psi (ψ) rotated 45 degrees counter-clockwise. The letter is centered on a horizontal baseline with tick marks on either side. The vertical stem and curved arms are thin outlines.

A medium-weight, solid black version of the Greek letter psi (ψ) rotated 45 degrees counter-clockwise. The letter is centered on a horizontal baseline with tick marks on either side. The vertical stem and curved arms are thicker than in the first version.

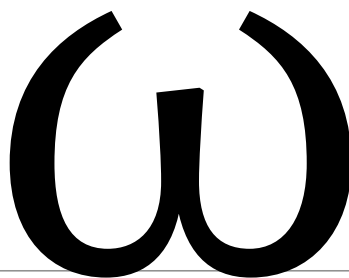
A thick, bold, solid black version of the Greek letter psi (ψ) rotated 45 degrees counter-clockwise. The letter is centered on a horizontal baseline with tick marks on either side. The vertical stem and curved arms are significantly thicker than in the previous versions.

omega | ω | U+03C9



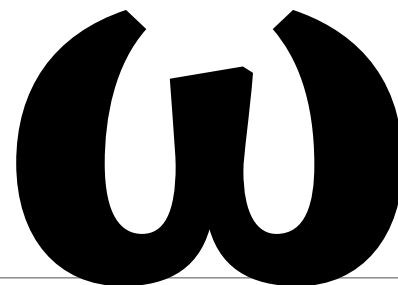
A thin weight version of the Greek letter omega (ω) in a serif font, positioned on a horizontal baseline with vertical tick marks at the start and end of the character.

0



A medium weight version of the Greek letter omega (ω) in a serif font, positioned on a horizontal baseline with vertical tick marks at the start and end of the character.

1

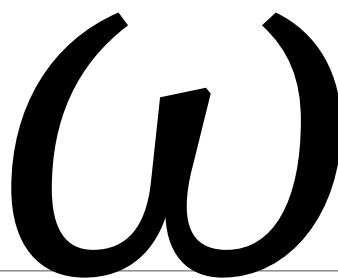


A bold weight version of the Greek letter omega (ω) in a serif font, positioned on a horizontal baseline with vertical tick marks at the start and end of the character.

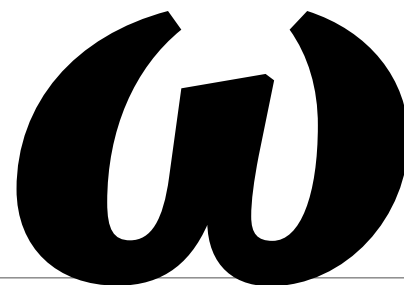
2



A thin weight version of the Greek letter omega (ω) in a cursive script font, positioned on a horizontal baseline with vertical tick marks at the start and end of the character.

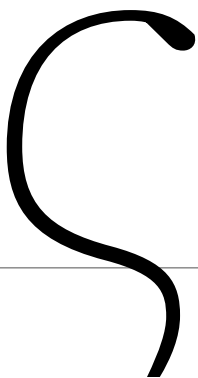


A medium weight version of the Greek letter omega (ω) in a cursive script font, positioned on a horizontal baseline with vertical tick marks at the start and end of the character.

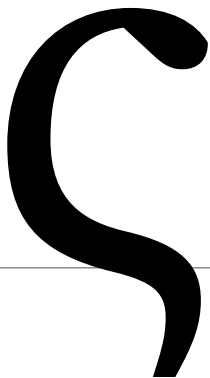


A bold weight version of the Greek letter omega (ω) in a cursive script font, positioned on a horizontal baseline with vertical tick marks at the start and end of the character.

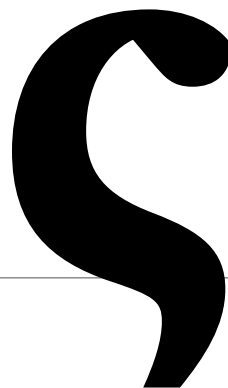
sigma.end | ς | U+03C2



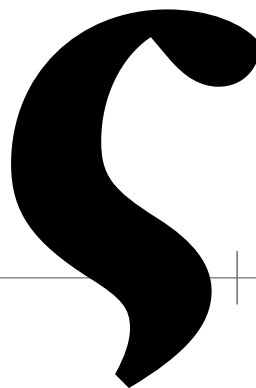
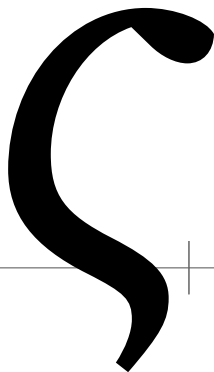
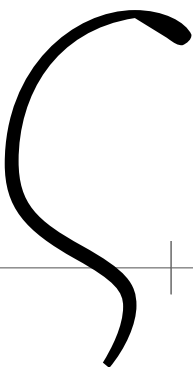
0



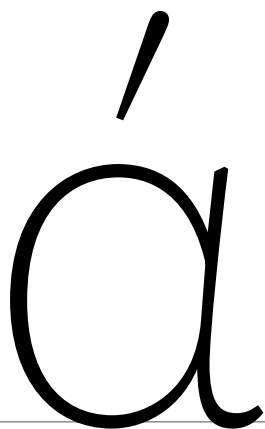
1



2

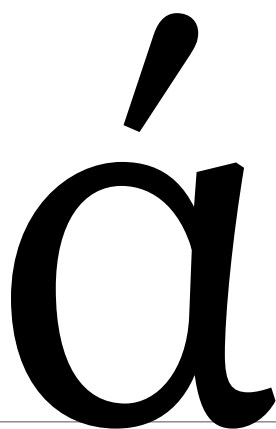


alphatonos | á | U+03AC



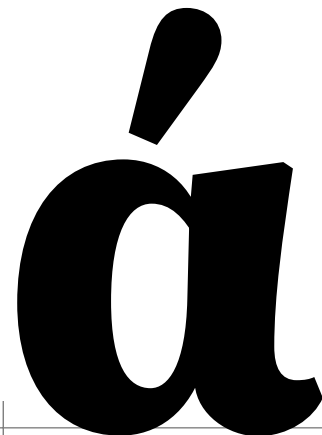
á

0



á

1

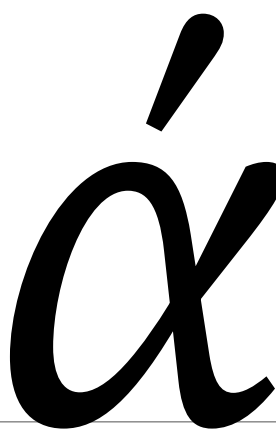


á

2



á

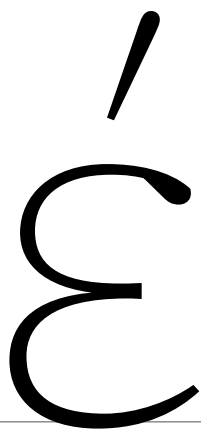


á



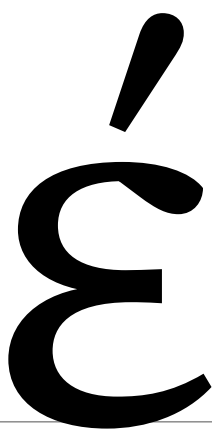
á

epsilontonos | é | U+03AD



é

0



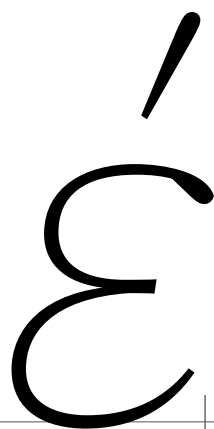
é

1




é

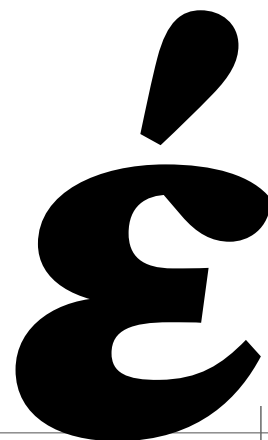
2



é



é



é

etatonos | ῥ | U+03AE

ῥ

A thin, elegant uppercase letter 'rho' with a diacritic (an acute accent) above it. The letter is positioned on a horizontal baseline with tick marks.

0

ῥ

A medium-weight uppercase letter 'rho' with a diacritic above it. The letter is positioned on a horizontal baseline with tick marks.

1

ῥ

A bold, heavy uppercase letter 'rho' with a diacritic above it. The letter is positioned on a horizontal baseline with tick marks.

2

ῥ

A thin, elegant italicized uppercase letter 'rho' with a diacritic above it. The letter is positioned on a horizontal baseline with tick marks.

ῥ

A medium-weight italicized uppercase letter 'rho' with a diacritic above it. The letter is positioned on a horizontal baseline with tick marks.

ῥ

A bold, heavy italicized uppercase letter 'rho' with a diacritic above it. The letter is positioned on a horizontal baseline with tick marks.

iotatonos | í | U+03AF



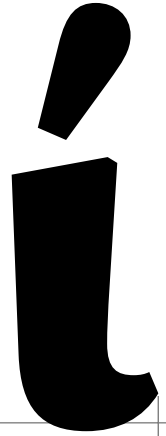
A thin, upright, black character resembling a lowercase 'i' with a dot above it. The dot is a simple diagonal stroke. The stem is a thin vertical line that curves slightly to the right at the bottom. It is positioned above a horizontal baseline with vertical tick marks on either side.

0



A medium-weight, upright, black character resembling a lowercase 'i' with a dot above it. The dot is a simple diagonal stroke. The stem is a medium-weight vertical line that curves slightly to the right at the bottom. It is positioned above a horizontal baseline with vertical tick marks on either side.

1



A thick, upright, black character resembling a lowercase 'i' with a dot above it. The dot is a simple diagonal stroke. The stem is a thick vertical line that curves slightly to the right at the bottom. It is positioned above a horizontal baseline with vertical tick marks on either side.

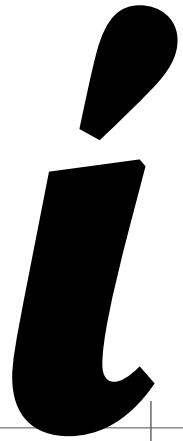
2



A thin, slanted, black character resembling a lowercase 'i' with a dot above it. The dot is a simple diagonal stroke. The stem is a thin vertical line that curves slightly to the right at the bottom. It is positioned above a horizontal baseline with vertical tick marks on either side.



A medium-weight, slanted, black character resembling a lowercase 'i' with a dot above it. The dot is a simple diagonal stroke. The stem is a medium-weight vertical line that curves slightly to the right at the bottom. It is positioned above a horizontal baseline with vertical tick marks on either side.



A thick, slanted, black character resembling a lowercase 'i' with a dot above it. The dot is a simple diagonal stroke. The stem is a thick vertical line that curves slightly to the right at the bottom. It is positioned above a horizontal baseline with vertical tick marks on either side.

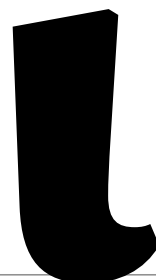
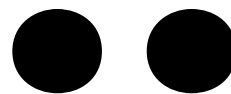
iotadieresis | ï | U+03CA



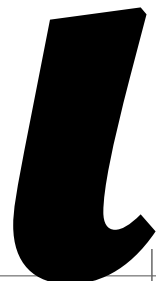
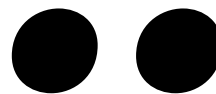
0



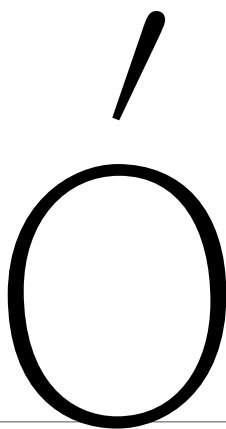
1



2

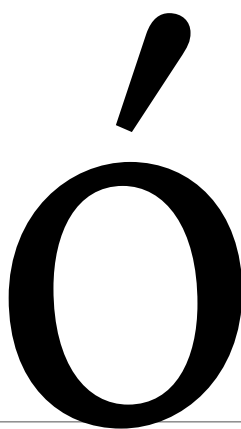


omicrontonos | ó | U+03CC



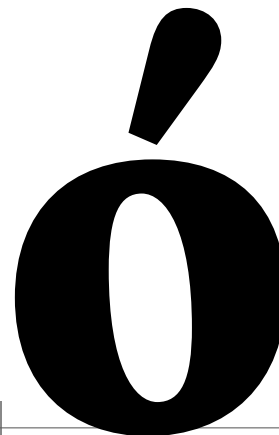
ó

0



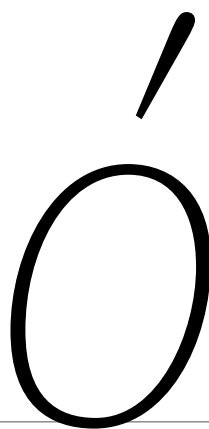
ó

1

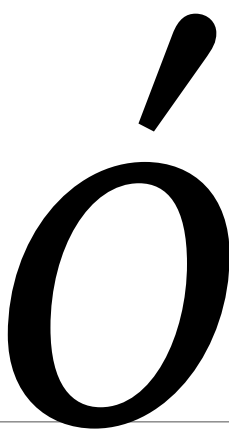


ó

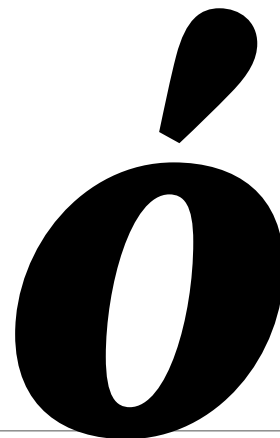
2



ó

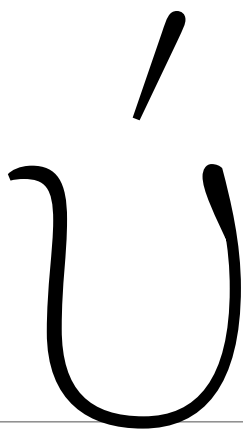


ó



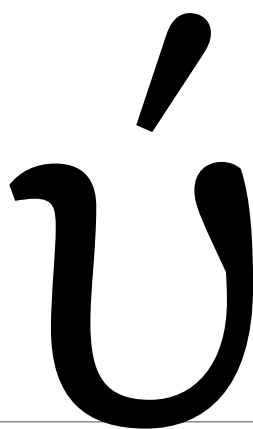
ó

upsilontonos | ú | U+03CD



A thin, light-weight version of the character 'ú' in a cursive script. The character is composed of a single stroke that starts with a small hook on the left, curves down and then up to form a bowl, and ends with a small tail on the right. A small acute accent is positioned above the bowl. The character is positioned on a horizontal baseline with vertical tick marks on either side.

0




A medium-weight version of the character 'ú' in a cursive script. The character is composed of a single stroke that starts with a small hook on the left, curves down and then up to form a bowl, and ends with a small tail on the right. A small acute accent is positioned above the bowl. The character is positioned on a horizontal baseline with vertical tick marks on either side.

1

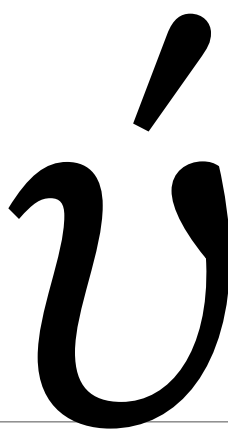


A thick, bold-weight version of the character 'ú' in a cursive script. The character is composed of a single stroke that starts with a small hook on the left, curves down and then up to form a bowl, and ends with a small tail on the right. A small acute accent is positioned above the bowl. The character is positioned on a horizontal baseline with vertical tick marks on either side.

2



A thin, light-weight version of the character 'ú' in a cursive script. The character is composed of a single stroke that starts with a small hook on the left, curves down and then up to form a bowl, and ends with a small tail on the right. A small acute accent is positioned above the bowl. The character is positioned on a horizontal baseline with vertical tick marks on either side.



A medium-weight version of the character 'ú' in a cursive script. The character is composed of a single stroke that starts with a small hook on the left, curves down and then up to form a bowl, and ends with a small tail on the right. A small acute accent is positioned above the bowl. The character is positioned on a horizontal baseline with vertical tick marks on either side.



A thick, bold-weight version of the character 'ú' in a cursive script. The character is composed of a single stroke that starts with a small hook on the left, curves down and then up to form a bowl, and ends with a small tail on the right. A small acute accent is positioned above the bowl. The character is positioned on a horizontal baseline with vertical tick marks on either side.

upsilondieresis | ü | U+03CB



A thin black outline of the character ü. It features two small, solid black dots positioned above the character. The character itself is a simple, rounded shape with a slight curve at the top.

0



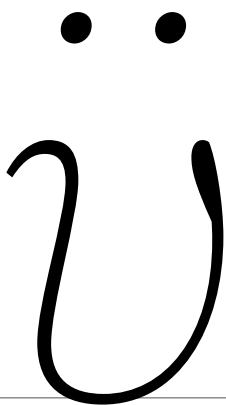
A medium-weight black outline of the character ü. The two dots above it are also medium-sized. The character's outline is thicker than in the first image.

1



A thick black outline of the character ü. The two dots above it are large and solid black. The character's outline is the thickest of the three in this row.

2



A thin black outline of the character ü, identical to the first image in the row. It has two small, solid black dots above it.

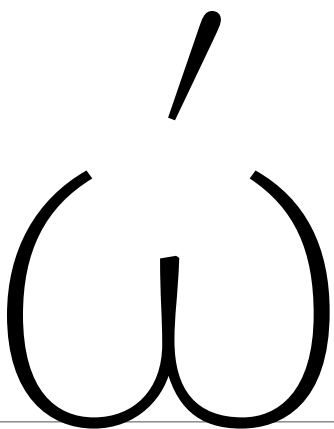


A medium-weight black outline of the character ü, identical to the second image in the row. It has two medium-sized, solid black dots above it.



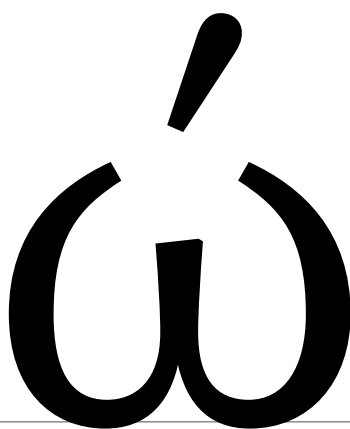
A thick black outline of the character ü, identical to the third image in the row. It has two large, solid black dots above it.

omegatonos | ó | U+03CE



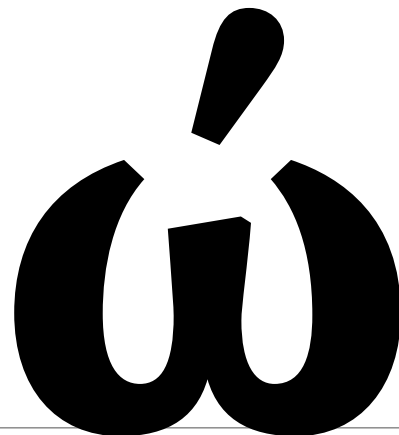
ó

0



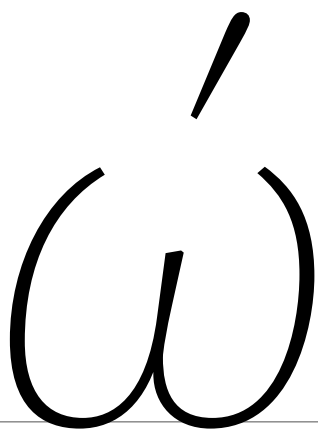
ó

1

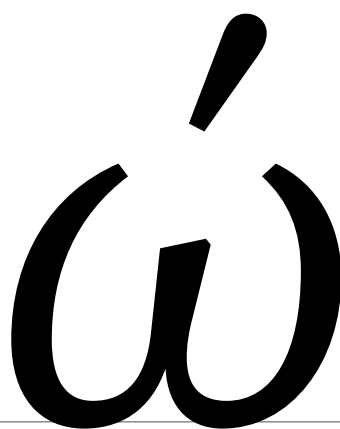


ó

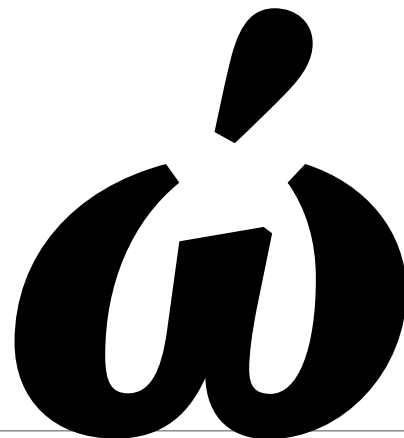
2



ó

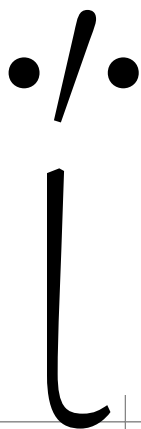


ó

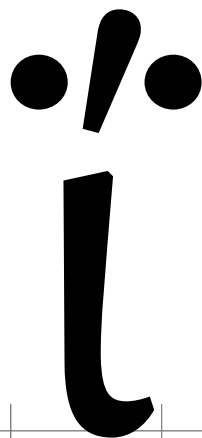


ó

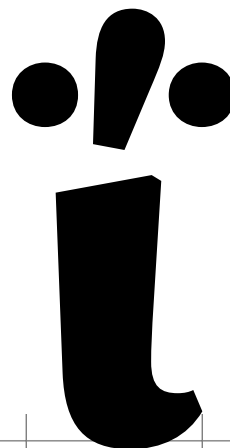
iotadierestonos | ĩ | U+0390



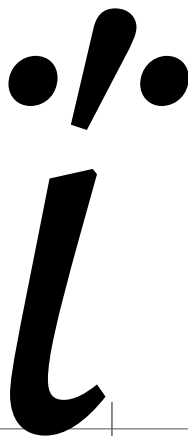
0



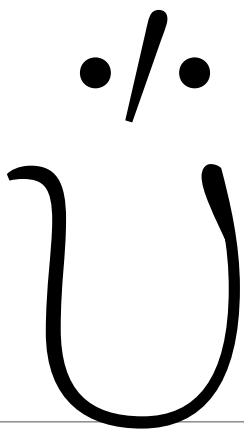
1



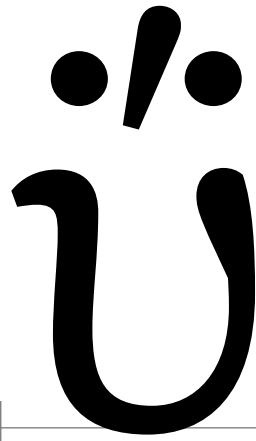
2



upsilondieresistonos | ũ | U+03B0



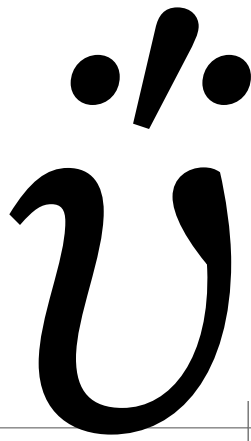
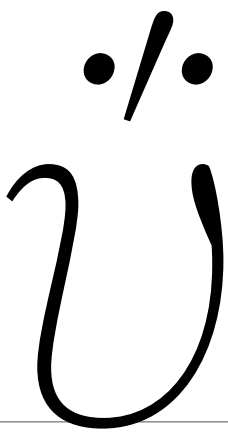
0



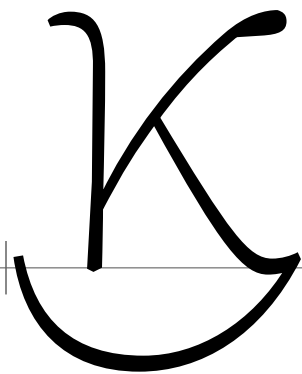
1



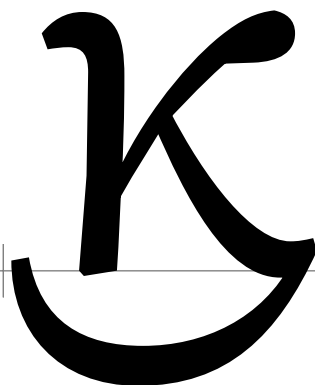
2



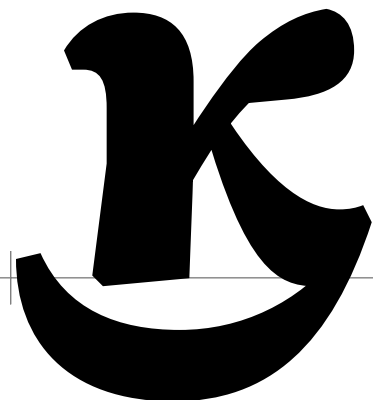
kai | 𐌆 | U+03D7



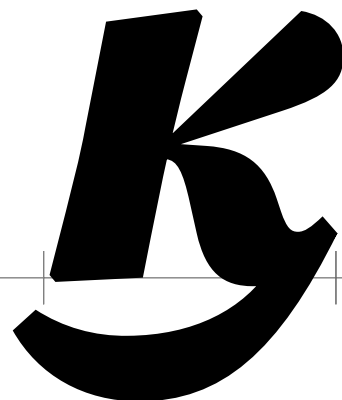
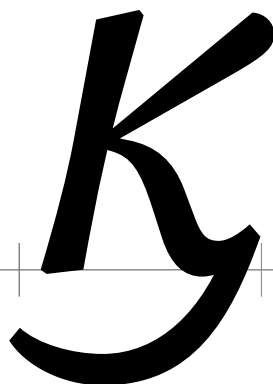
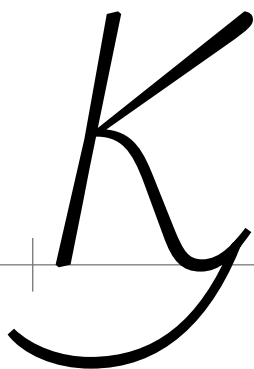
0



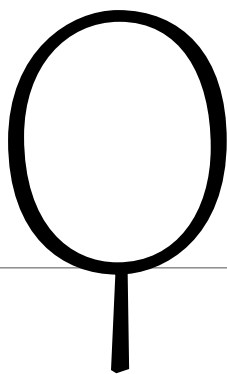
1



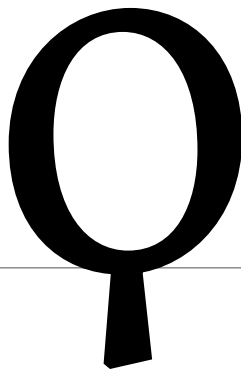
2



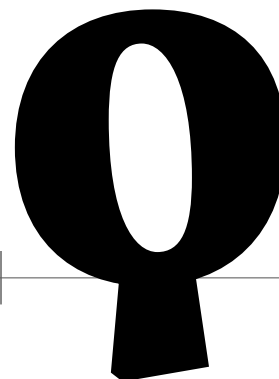
koppa | ϕ | U+03D9



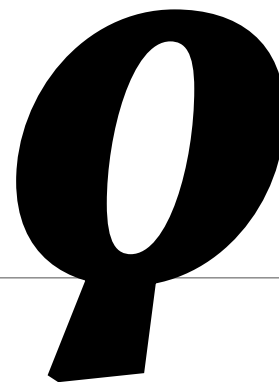
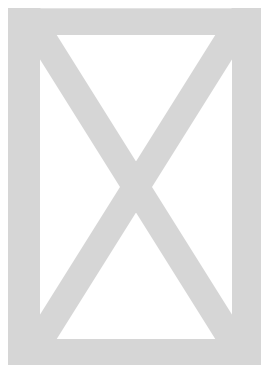
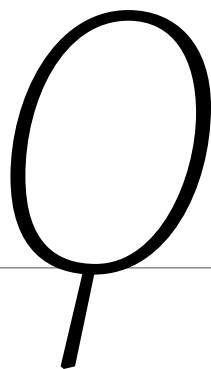
0



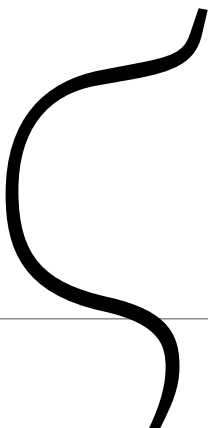
1



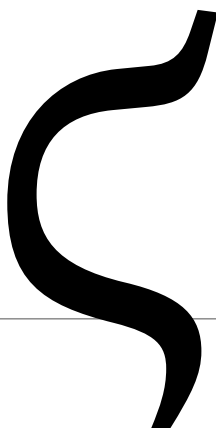
2



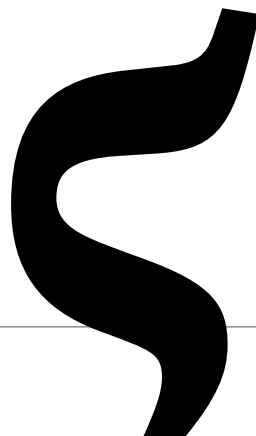
stigma | ζ | U+03DB



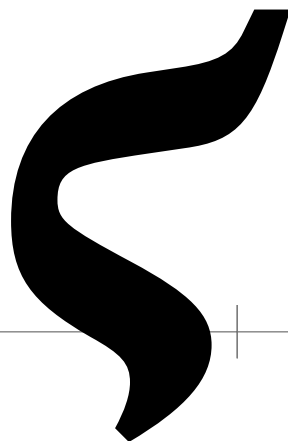
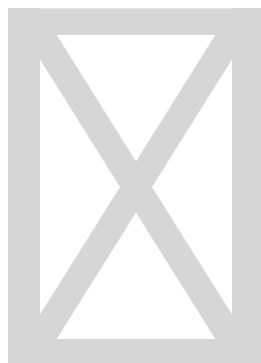
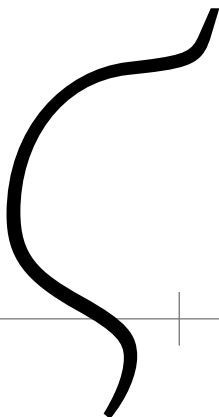
0



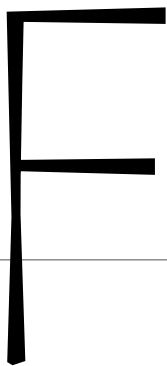
1



2

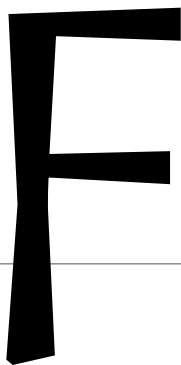


digamma | Ɔ | U+03DD



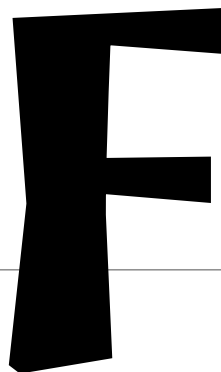
A black uppercase digamma glyph (Ɔ) with a vertical stem and two horizontal arms, positioned on a horizontal baseline. The stem is slightly to the left of the vertical centerline.

0



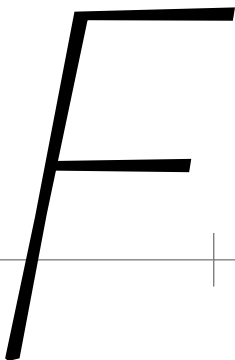
A black uppercase digamma glyph (Ɔ) with a vertical stem and two horizontal arms, positioned on a horizontal baseline. The stem is slightly to the left of the vertical centerline.

1

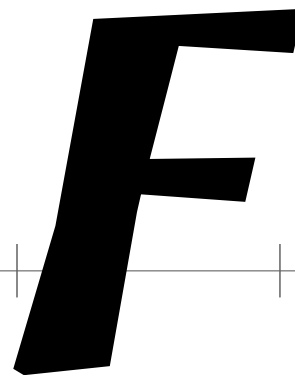
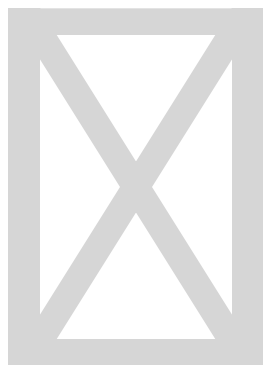


A black uppercase digamma glyph (Ɔ) with a vertical stem and two horizontal arms, positioned on a horizontal baseline. The stem is slightly to the left of the vertical centerline.

2

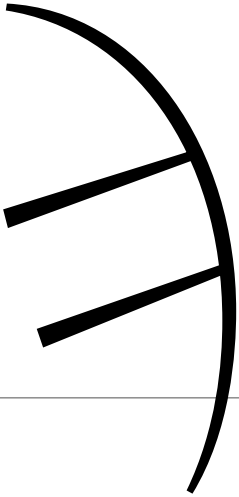


A black uppercase digamma glyph (Ɔ) with a vertical stem and two horizontal arms, positioned on a horizontal baseline. The stem is slightly to the left of the vertical centerline.

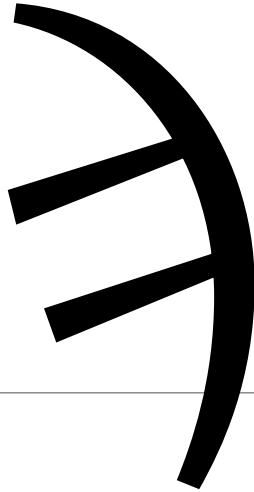


A black uppercase digamma glyph (Ɔ) with a vertical stem and two horizontal arms, positioned on a horizontal baseline. The stem is slightly to the left of the vertical centerline.

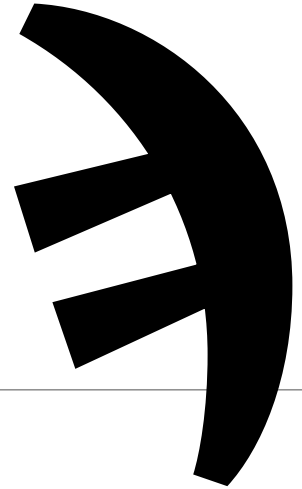
sampi | Ꞑ | U+03E1



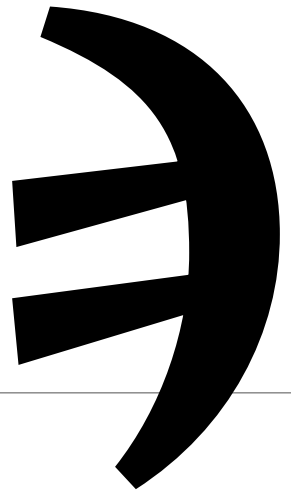
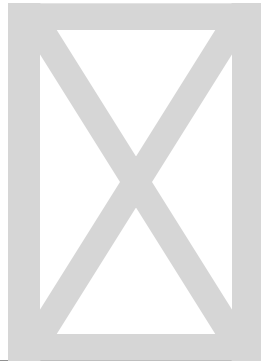
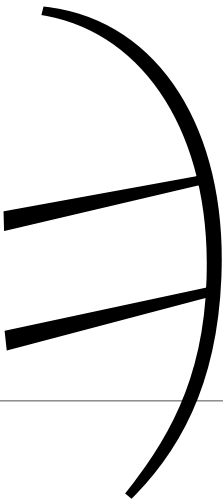
0



1



2



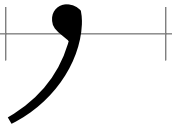
questiongreek | ; | U+037E



0

1

2



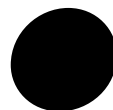
anoteleia | • | U+0387



0

1

2



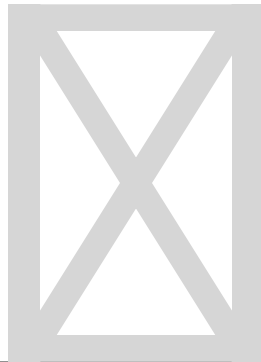
anoteleia.cap



0

1

2



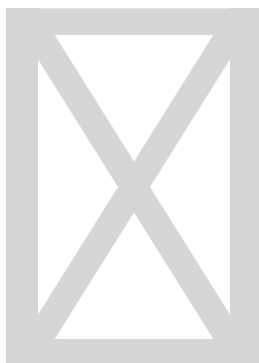
numeralsign | ' | U+0374



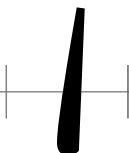
0

1

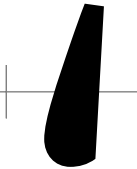
2



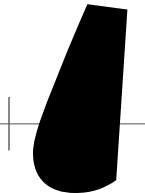
lownumeralsign | , | U+0375



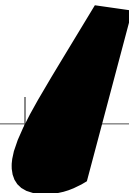
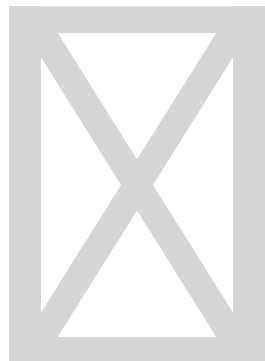
0



1



2



tonos | ´ | U+0384



0

1

2



tonos.cap



0

1

2



dieresistonos | ˆ | U+0385



0

1

2



tonoscmb



0

1

2



dieresistonoscmb



0

1

2

