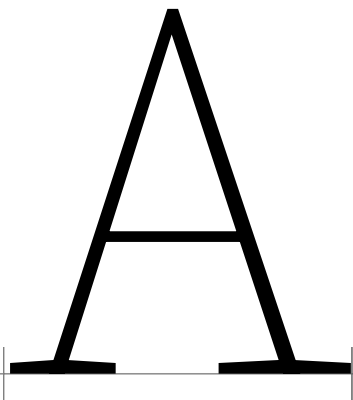


Source Serif Pro Master

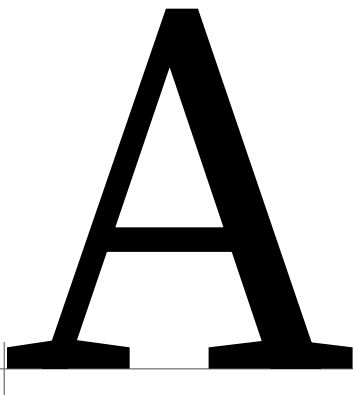
2019-04-12

16:10:44

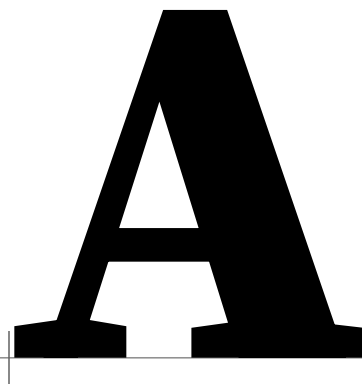
Alpha | A | U+0391



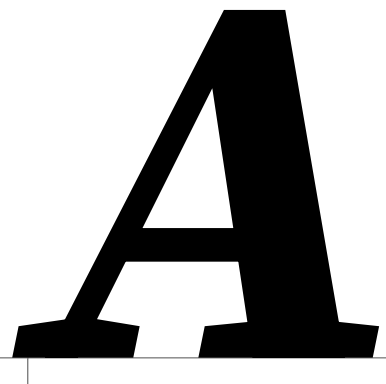
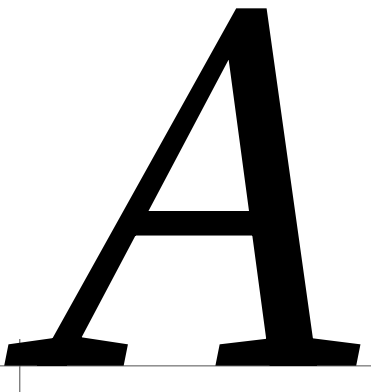
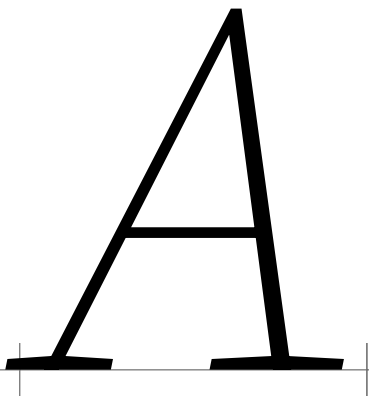
0



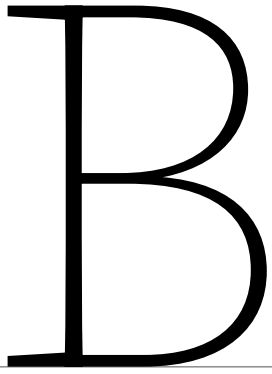
1



2

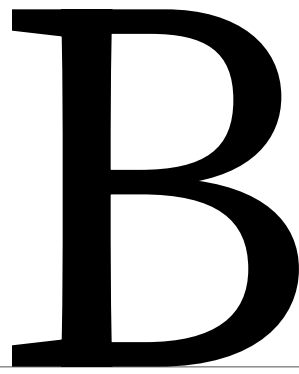


Beta | B | U+0392



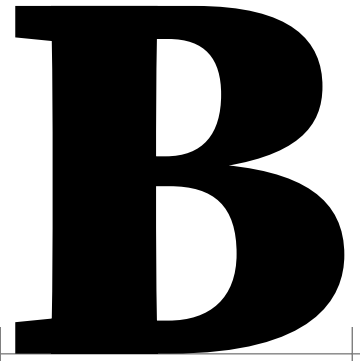
B

0



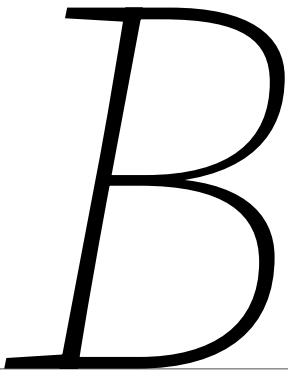
B

1

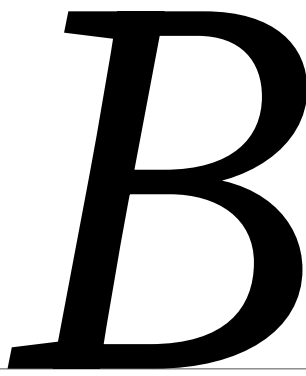


B

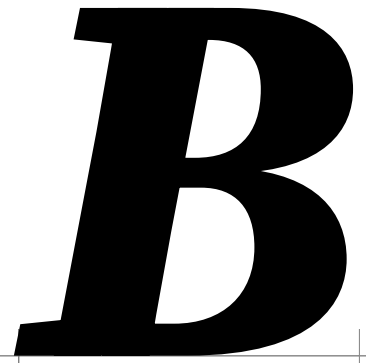
2



B

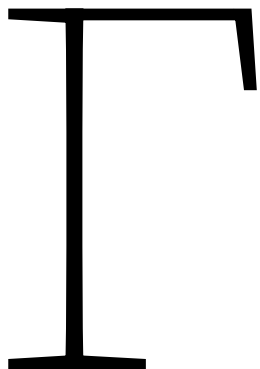


B

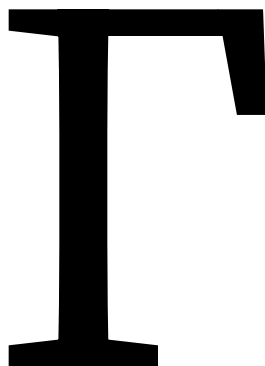


B

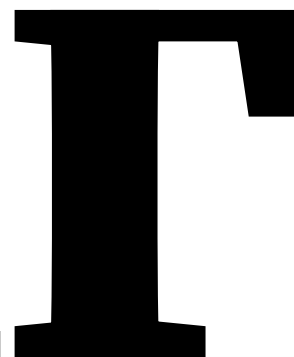
Gamma | Γ | U+0393



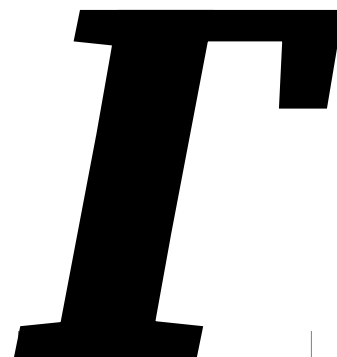
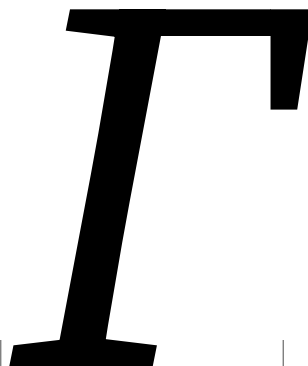
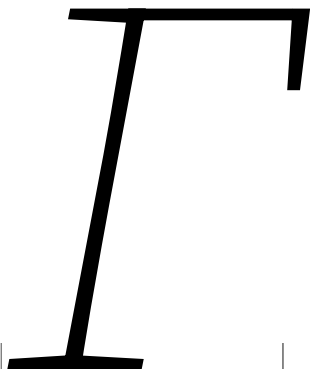
0



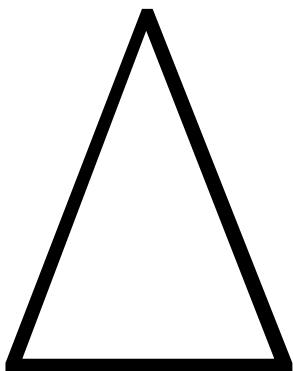
1



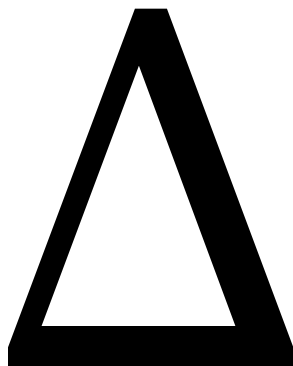
2



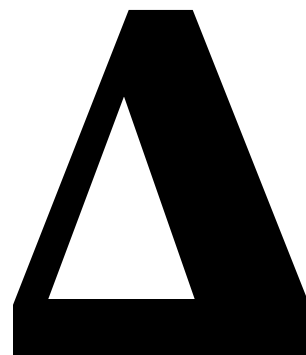
Delta | Δ | U+0394



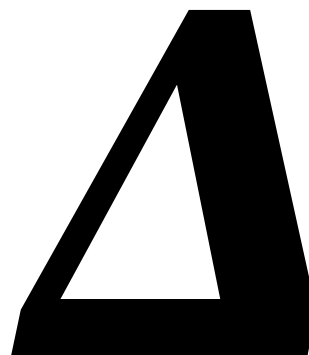
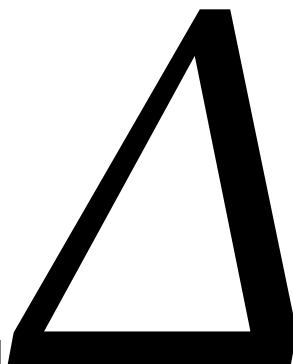
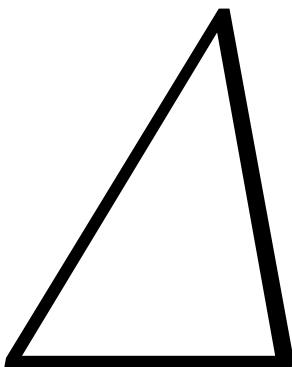
0



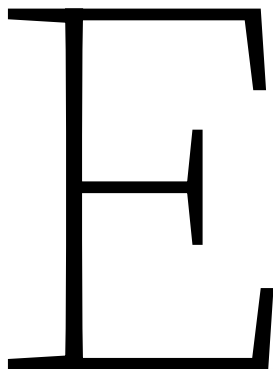
1



2

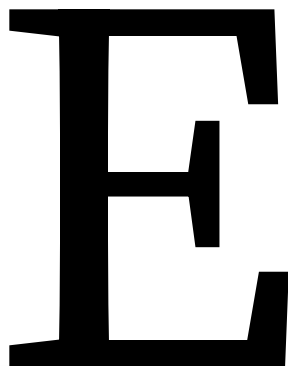


Epsilon | E | U+0395



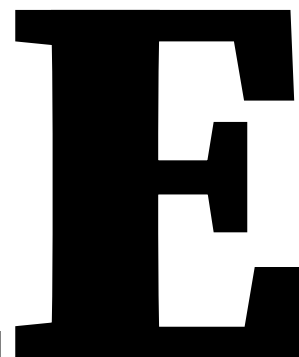
A light, thin, uppercase letter 'E' with a slightly irregular, hand-drawn appearance. It features a vertical stem on the left and a horizontal bar at the top that is slightly thicker than the stem. The right side of the letter is open, with a small hook-like shape at the top and bottom.

0



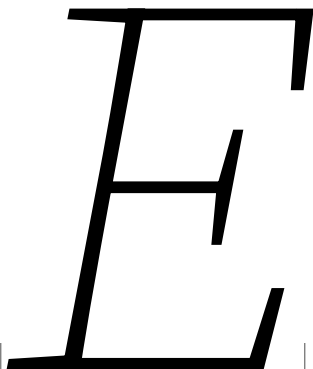
A medium-weight, bold, uppercase letter 'E' with a slightly irregular, hand-drawn appearance. It features a vertical stem on the left and a horizontal bar at the top that is slightly thicker than the stem. The right side of the letter is open, with a small hook-like shape at the top and bottom.

1

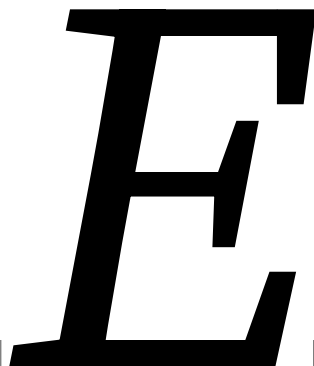


A heavy, bold, uppercase letter 'E' with a slightly irregular, hand-drawn appearance. It features a vertical stem on the left and a horizontal bar at the top that is significantly thicker than the stem. The right side of the letter is open, with a small hook-like shape at the top and bottom.

2



A light, italicized, uppercase letter 'E' with a slightly irregular, hand-drawn appearance. The letter is slanted to the right. It features a vertical stem on the left and a horizontal bar at the top that is slightly thicker than the stem. The right side of the letter is open, with a small hook-like shape at the top and bottom.

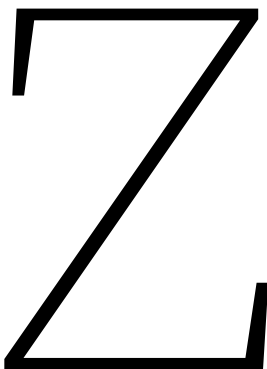


A medium-weight, bold, italicized, uppercase letter 'E' with a slightly irregular, hand-drawn appearance. The letter is slanted to the right. It features a vertical stem on the left and a horizontal bar at the top that is slightly thicker than the stem. The right side of the letter is open, with a small hook-like shape at the top and bottom.




A heavy, bold, italicized, uppercase letter 'E' with a slightly irregular, hand-drawn appearance. The letter is slanted to the right. It features a vertical stem on the left and a horizontal bar at the top that is significantly thicker than the stem. The right side of the letter is open, with a small hook-like shape at the top and bottom.

Zeta | Z | U+0396

A thin black outline of the uppercase letter Z, positioned on a horizontal baseline. The letter has a slight curve at the top left and bottom right corners.

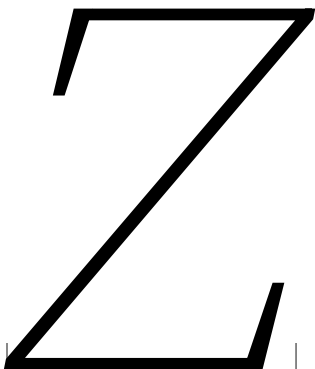

0

A medium-weight black outline of the uppercase letter Z, positioned on a horizontal baseline. The letter has a slight curve at the top left and bottom right corners.

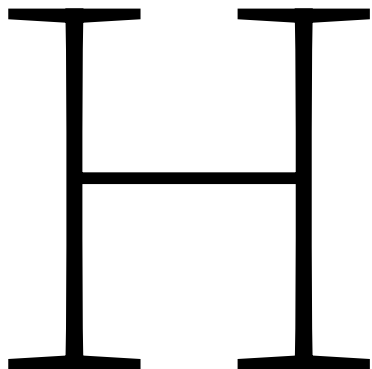
1

A thick black outline of the uppercase letter Z, positioned on a horizontal baseline. The letter has a slight curve at the top left and bottom right corners.

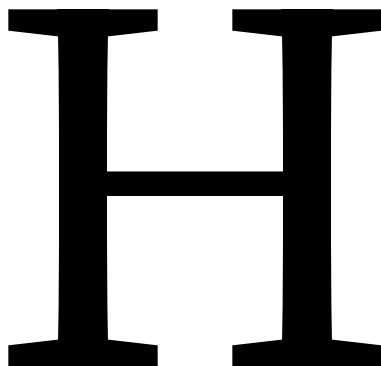
2

A thin black outline of the uppercase letter Z, positioned on a horizontal baseline. The letter has a slight curve at the top left and bottom right corners.A medium-weight black outline of the uppercase letter Z, positioned on a horizontal baseline. The letter has a slight curve at the top left and bottom right corners.A thick black outline of the uppercase letter Z, positioned on a horizontal baseline. The letter has a slight curve at the top left and bottom right corners.

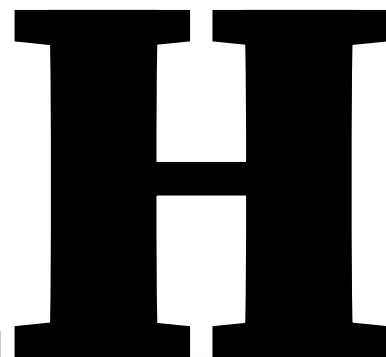
Eta | H | U+0397



A thin, regular uppercase letter 'H' with a simple, clean design. The vertical stems are straight, and the horizontal bars are thin and centered.



A medium-weight uppercase letter 'H' with a slightly more substantial design than the first. The vertical stems are thicker, and the horizontal bars are more pronounced.

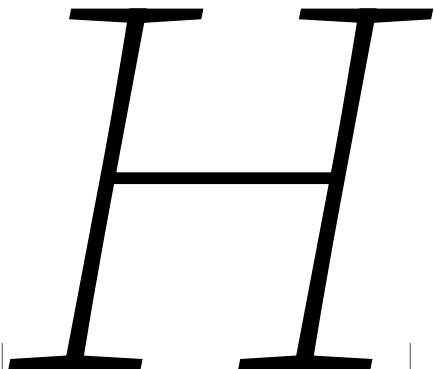


A bold, heavy uppercase letter 'H' with a thick, blocky design. The vertical stems are very thick, and the horizontal bars are wide and solid.

0

1

2



A thin, italicized uppercase letter 'H'. The vertical stems are slanted to the right, and the horizontal bars are also slanted to match the angle.

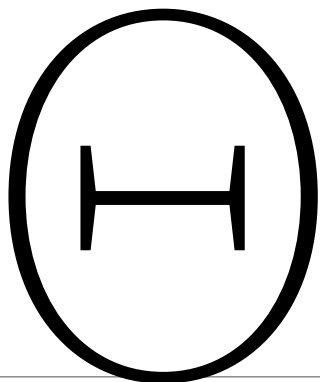


A medium-weight, italicized uppercase letter 'H'. The vertical stems are slanted to the right, and the horizontal bars are also slanted to match the angle.

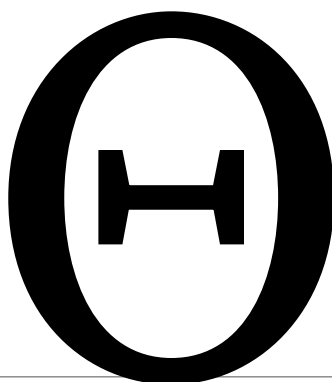


A bold, italicized uppercase letter 'H'. The vertical stems are slanted to the right, and the horizontal bars are also slanted to match the angle.

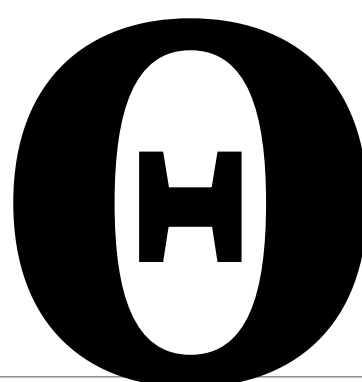
Theta | Θ | U+0398



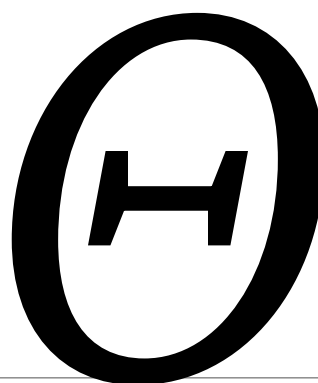
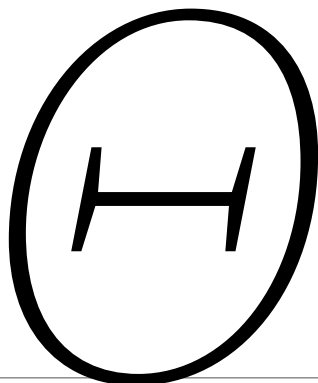
0



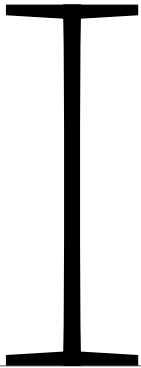
1



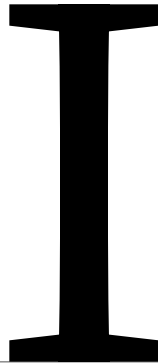
2



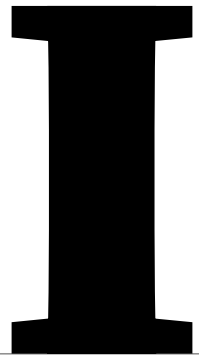
Iota | I | U+0399



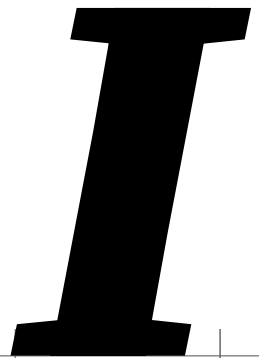
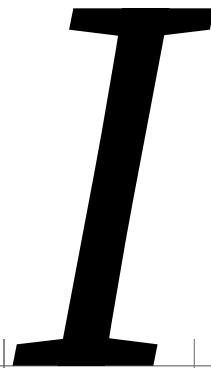
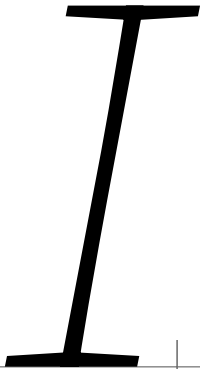
0



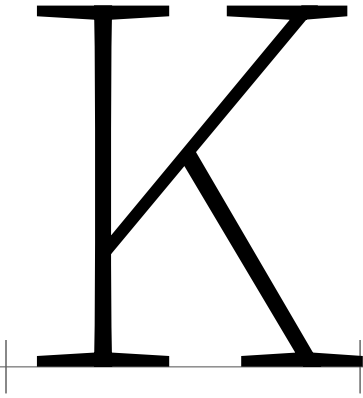
1



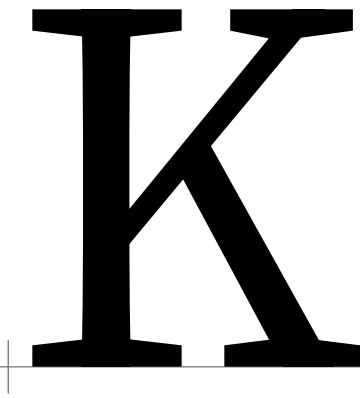
2



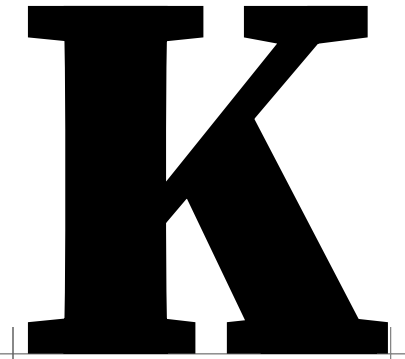
Kappa | K | U+039A



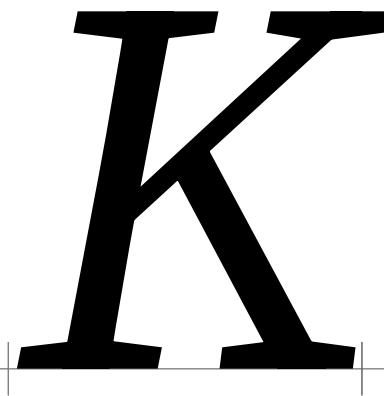
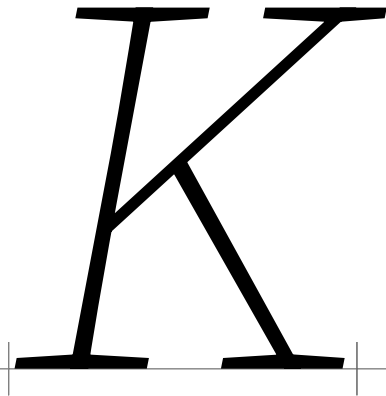
0



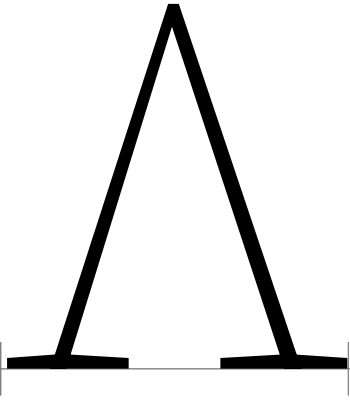
1



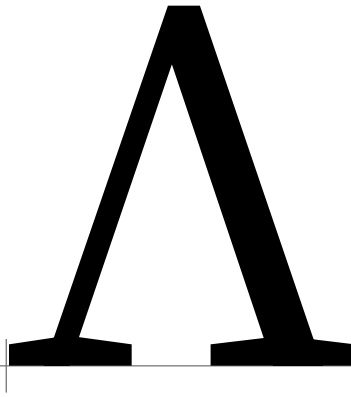
2



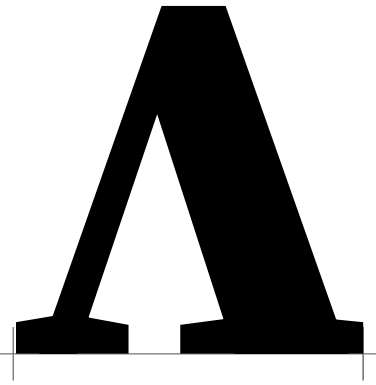
Lambda | Λ | U+039B



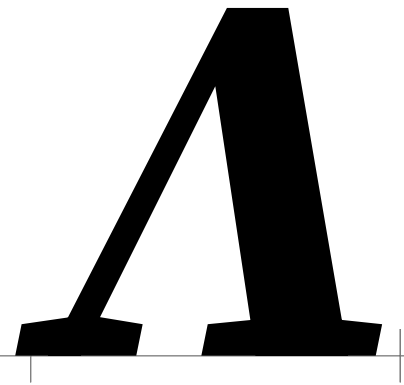
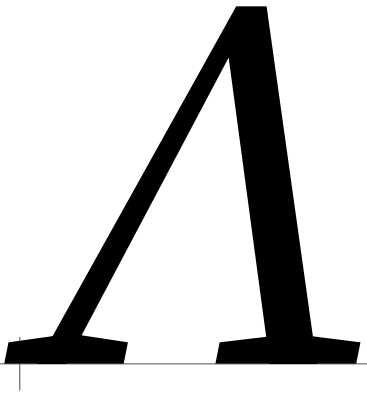
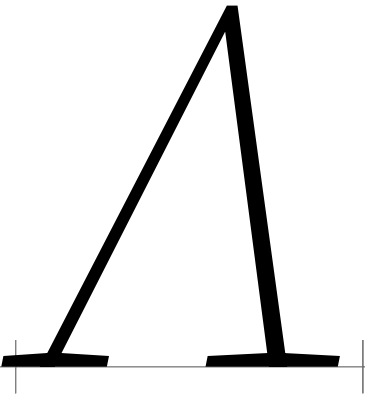
0



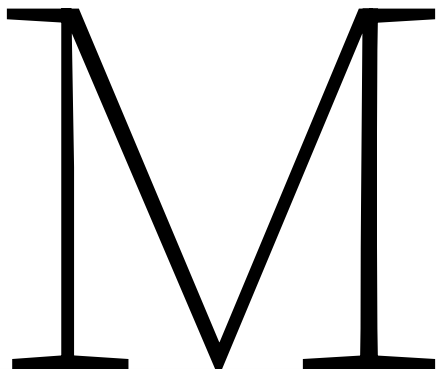
1



2

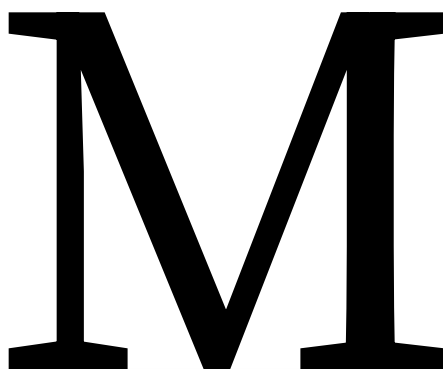


Mu | M | U+039C



M

0



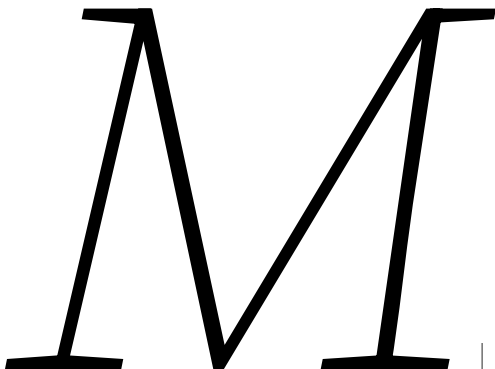
M

1



M

2



M

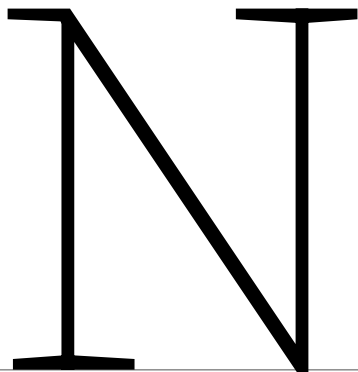


M



M

Nu | N | U+039D



A thin, light weight uppercase letter 'Nu' (U+039D) in a serif font. The letter has a vertical stem on the left, a diagonal stroke on the right, and a vertical stem on the right. The top and bottom bars are thin and horizontal.



A medium weight uppercase letter 'Nu' (U+039D) in a serif font. The letter has a vertical stem on the left, a diagonal stroke on the right, and a vertical stem on the right. The top and bottom bars are medium thickness and horizontal.

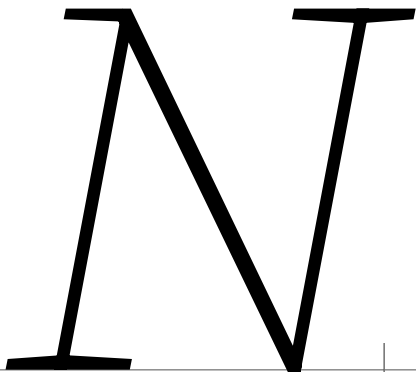


A bold uppercase letter 'Nu' (U+039D) in a serif font. The letter has a vertical stem on the left, a diagonal stroke on the right, and a vertical stem on the right. The top and bottom bars are thick and horizontal.

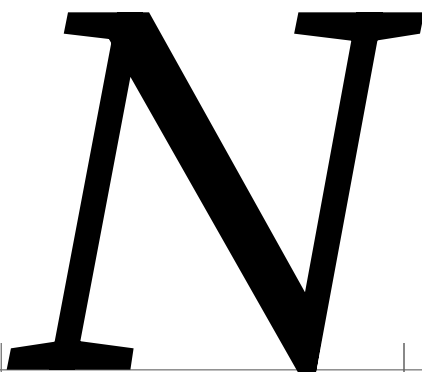
0

1

2



A thin, light weight, italicized uppercase letter 'Nu' (U+039D) in a serif font. The letter is slanted to the right. It has a vertical stem on the left, a diagonal stroke on the right, and a vertical stem on the right. The top and bottom bars are thin and horizontal.

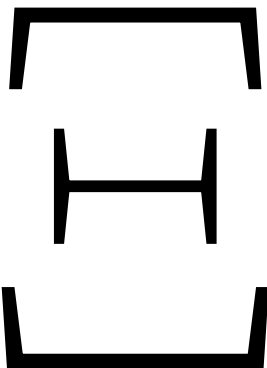


A medium weight, italicized uppercase letter 'Nu' (U+039D) in a serif font. The letter is slanted to the right. It has a vertical stem on the left, a diagonal stroke on the right, and a vertical stem on the right. The top and bottom bars are medium thickness and horizontal.

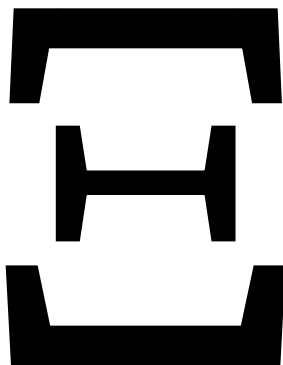


A bold, italicized uppercase letter 'Nu' (U+039D) in a serif font. The letter is slanted to the right. It has a vertical stem on the left, a diagonal stroke on the right, and a vertical stem on the right. The top and bottom bars are thick and horizontal.

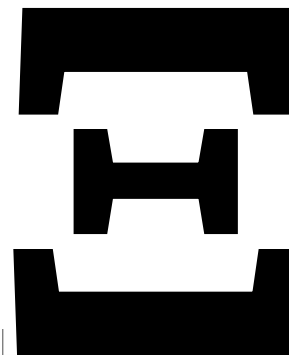
Xi | ≡ | U+039E



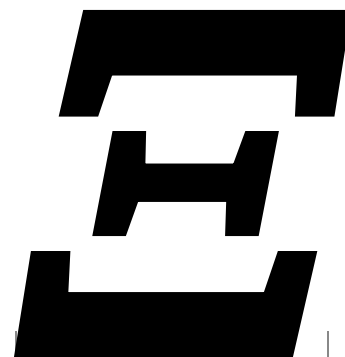
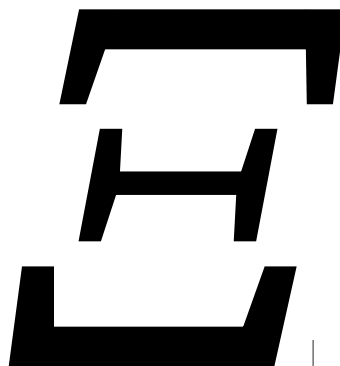
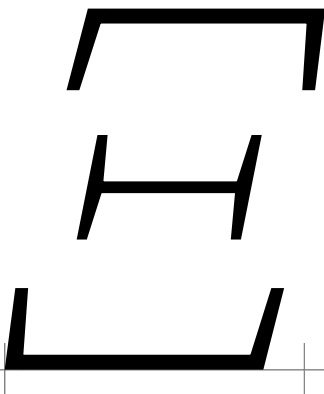
0



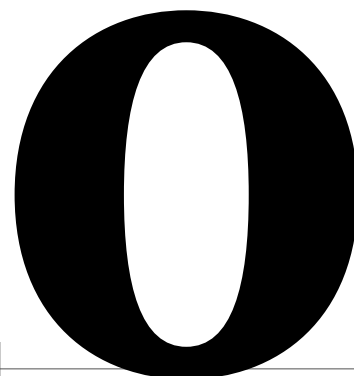
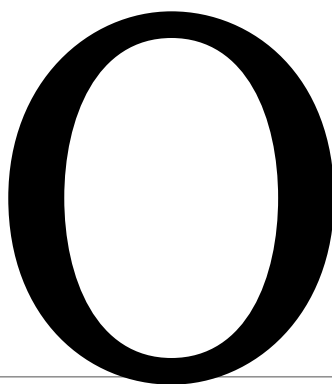
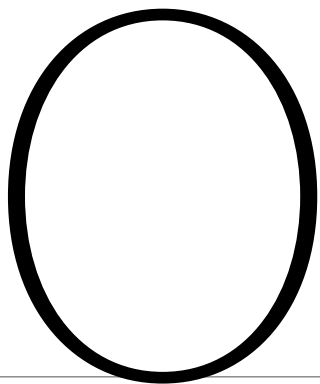
1



2



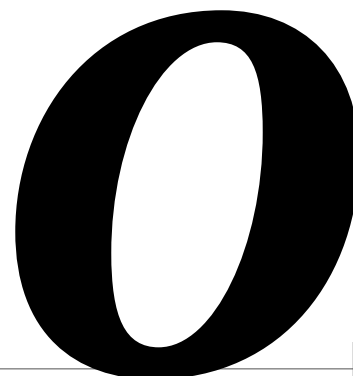
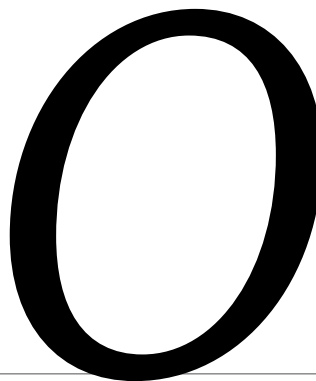
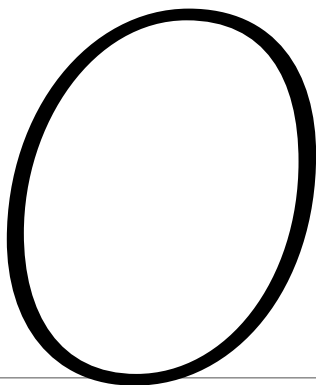
Omicron | 0 | U+039F



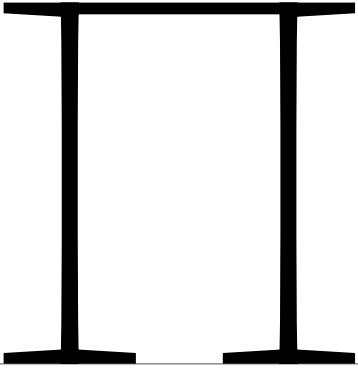
0

1

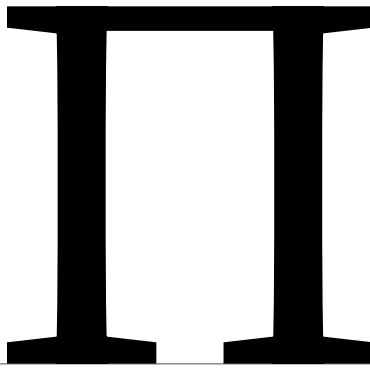
2



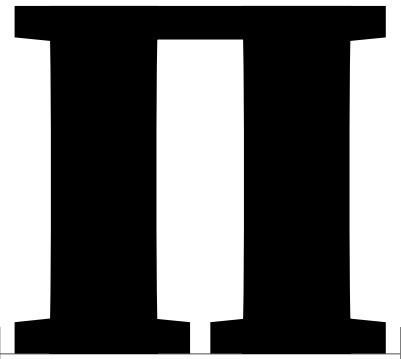
Π | Π | U+03A0



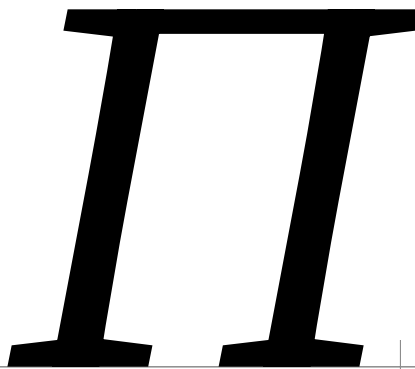
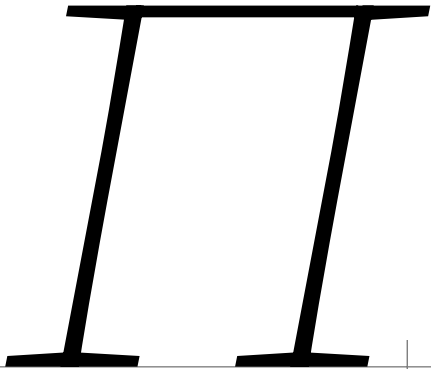
0



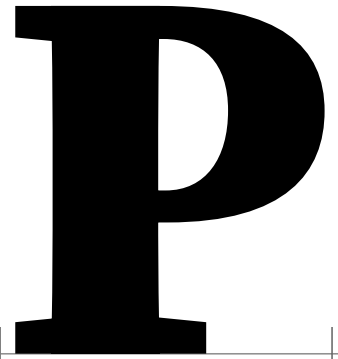
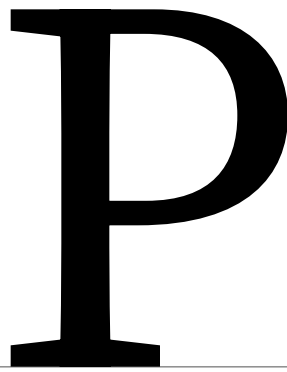
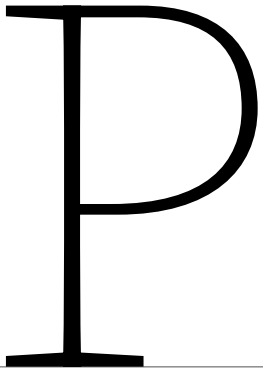
1



2



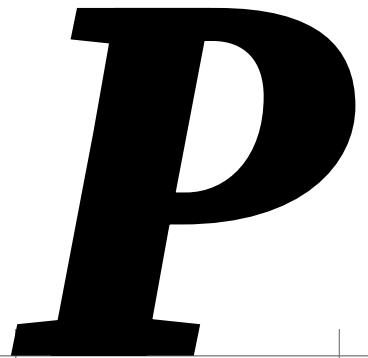
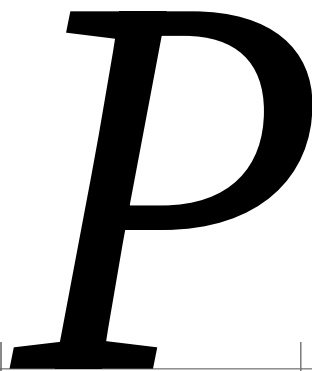
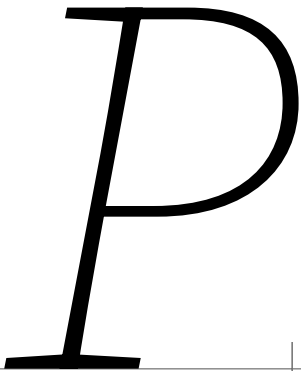
Rho | P | U+03A1



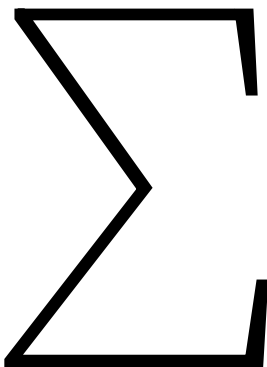
0

1

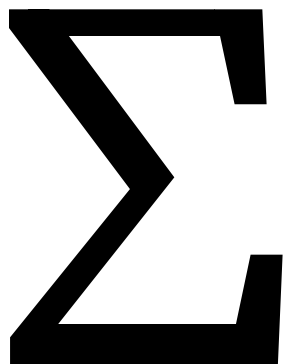
2



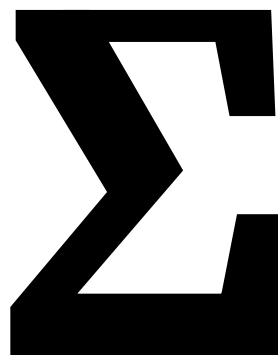
Sigma | Σ | U+03A3



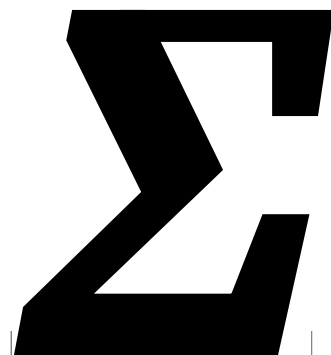
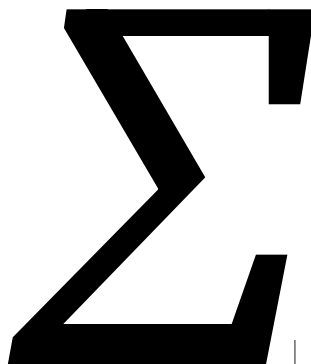
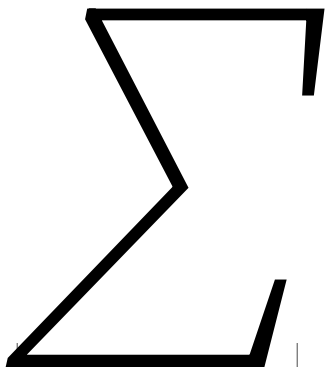
0



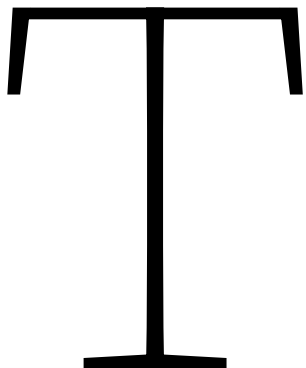
1



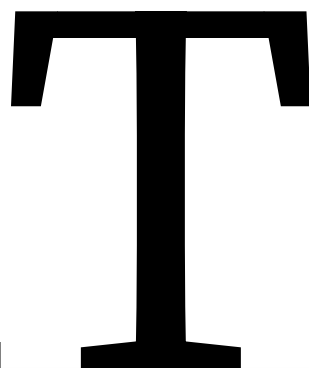
2



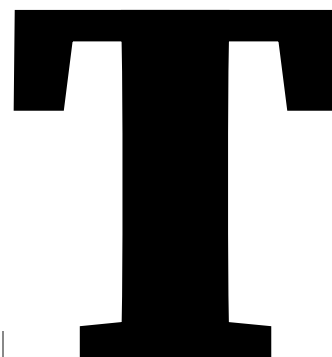
Tau | T | U+03A4



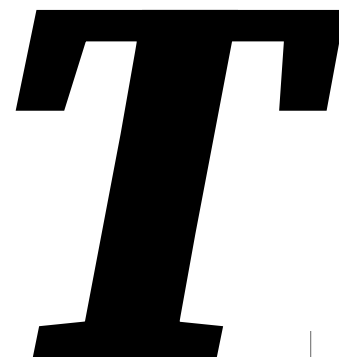
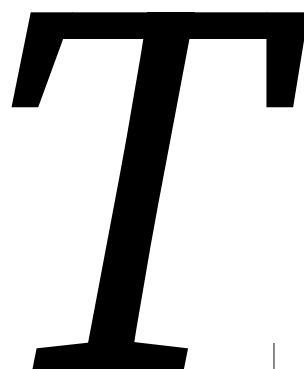
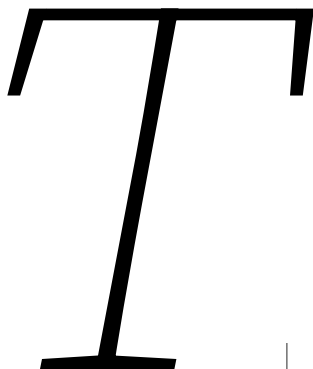
0



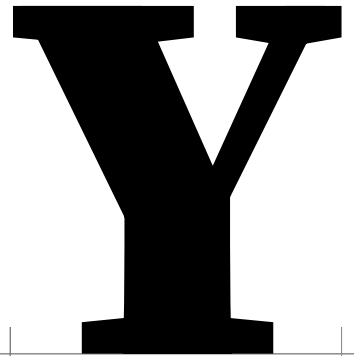
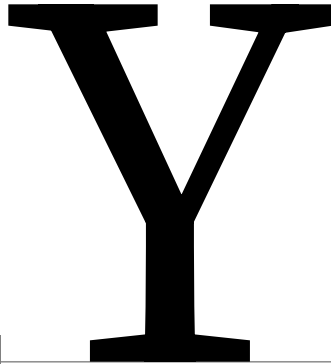
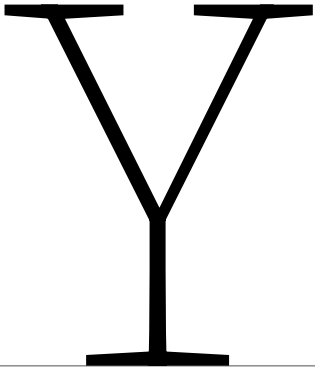
1



2



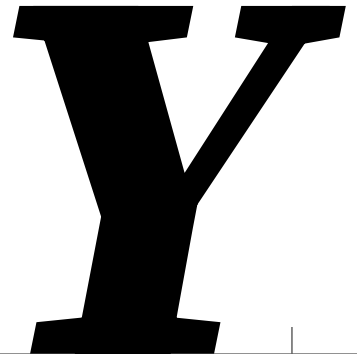
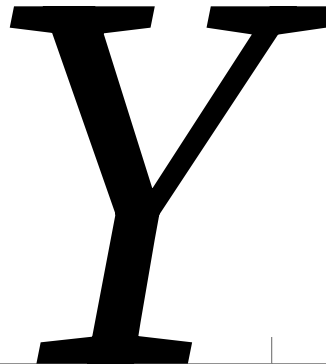
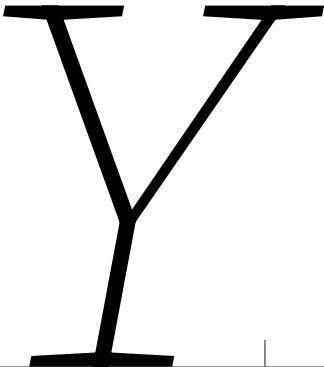
Upsilon | Y | U+03A5



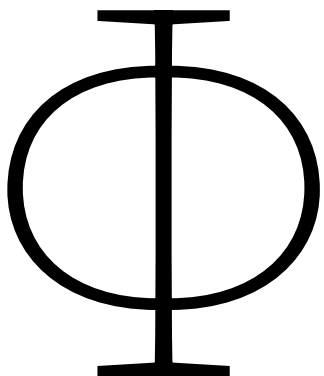
0

1

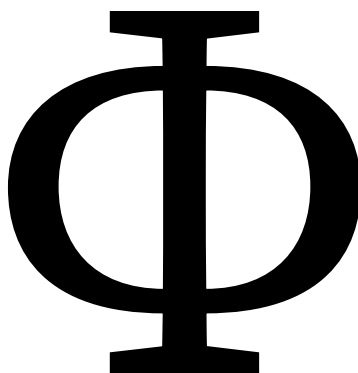
2



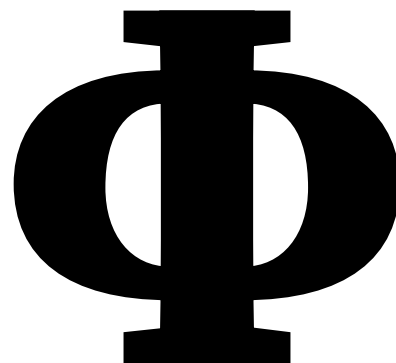
Phi | Φ | U+03A6



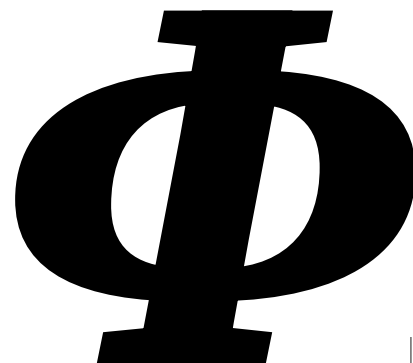
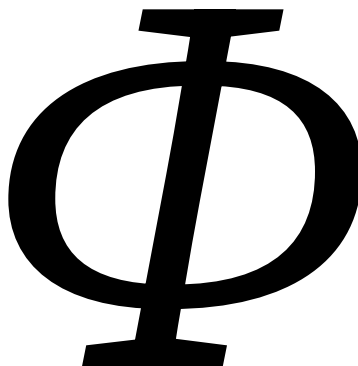
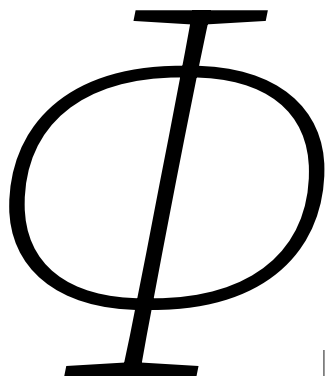
0



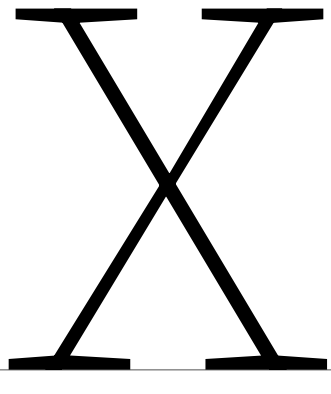
1



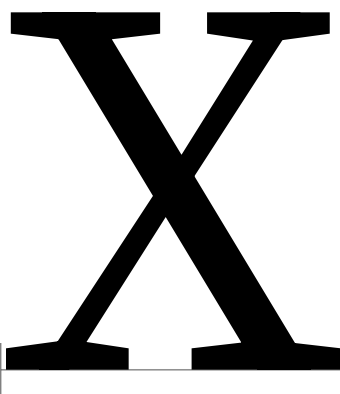
2



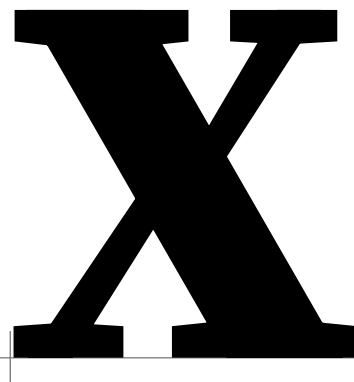
Chi | X | U+03A7



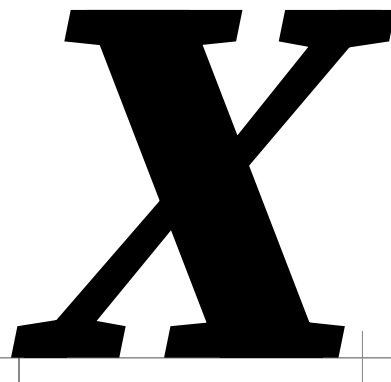
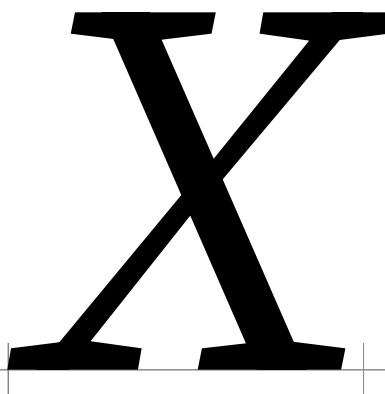
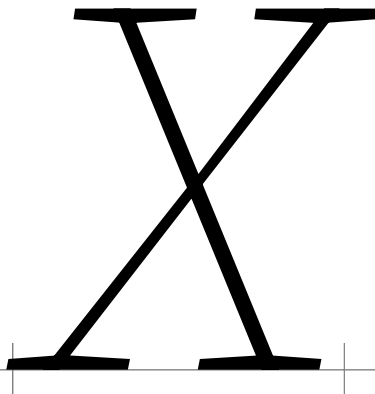
0



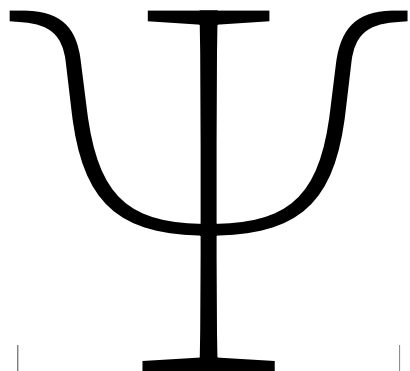
1



2

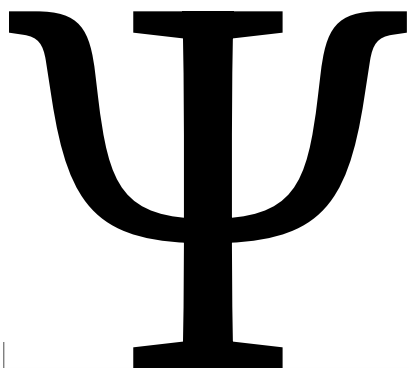


Psi | Ψ | U+03A8



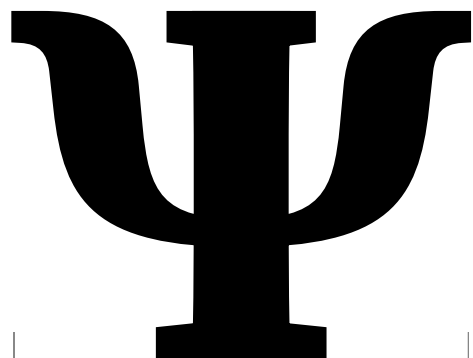
Ψ

0



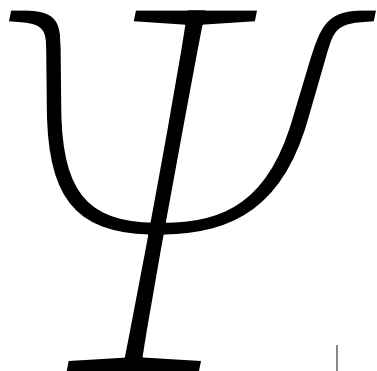
Ψ

1

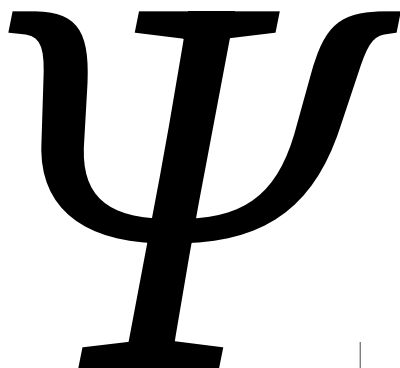


Ψ

2



Ψ

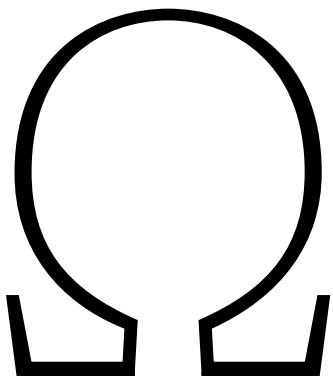


Ψ

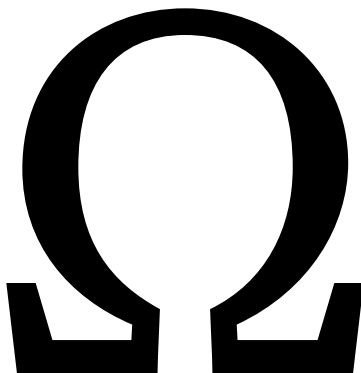


Ψ

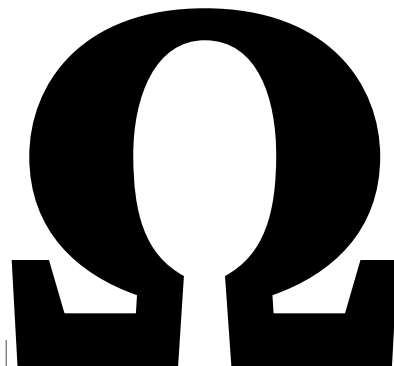
Omega | Ω | U+03A9



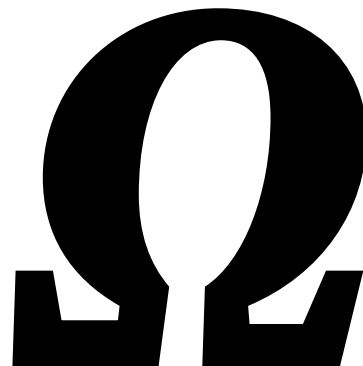
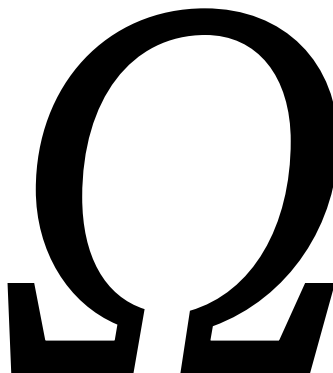
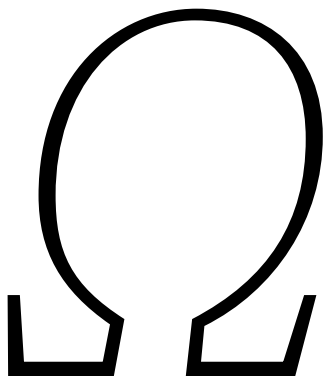
0



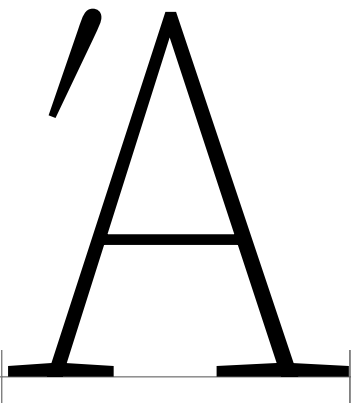
1



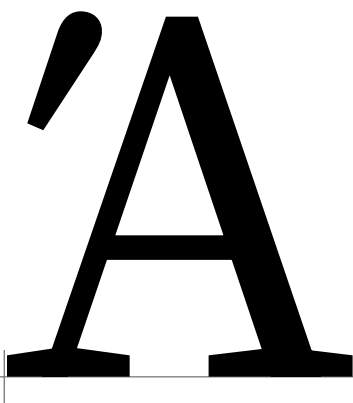
2



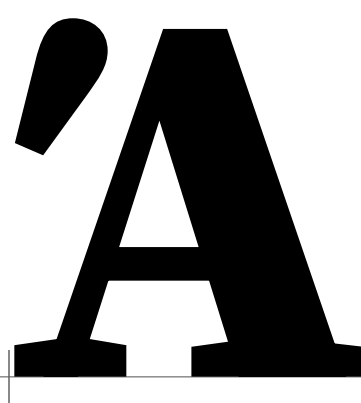
Alphatonos | Ā | U+0386



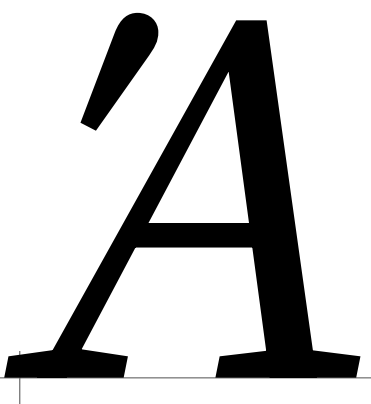
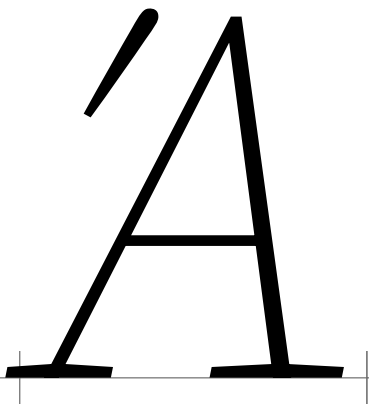
0



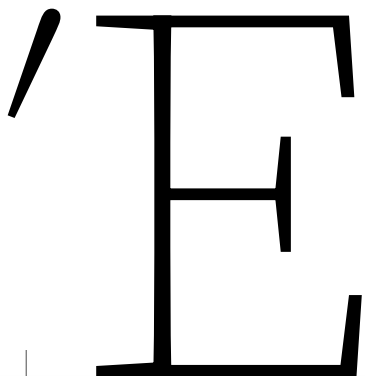
1



2

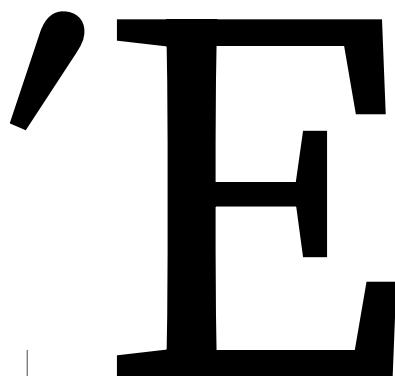


Epsilontonos | Ę | U+0388



Ę

0



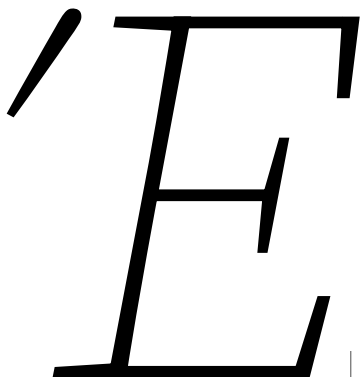
Ę

1



Ę

2



Ę



Ę



Ę

Etatonos | Ħ | U+0389



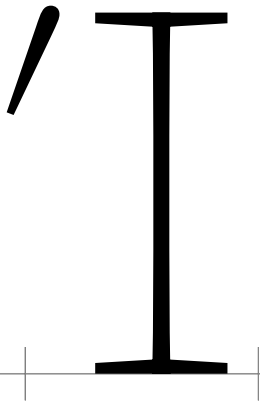
0

1

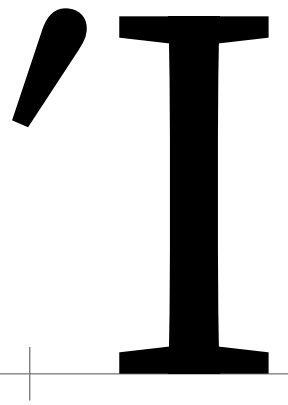
2



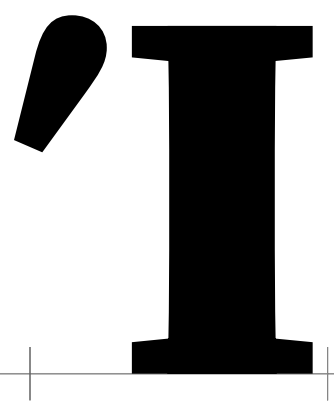
Iotatonos | Ī | U+038A



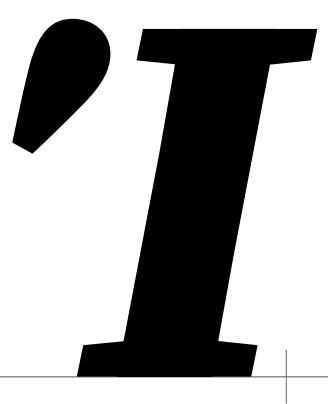
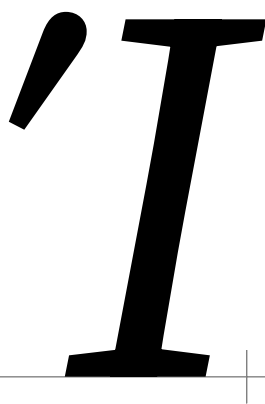
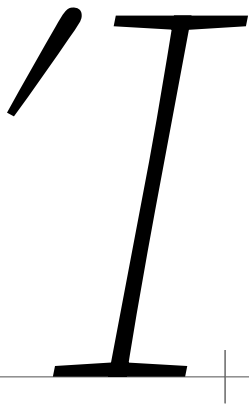
0



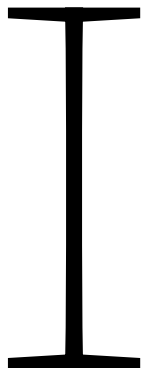
1



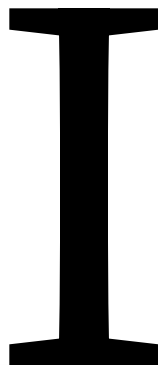
2



Iotadieresis | Ï | U+03AA



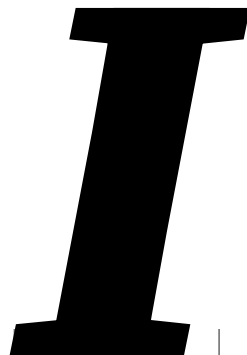
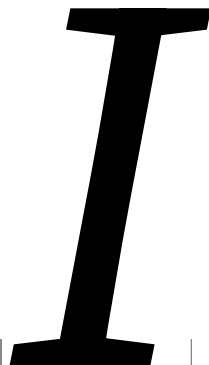
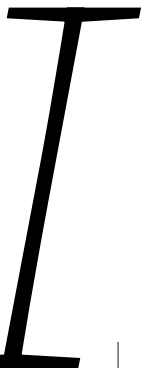
0



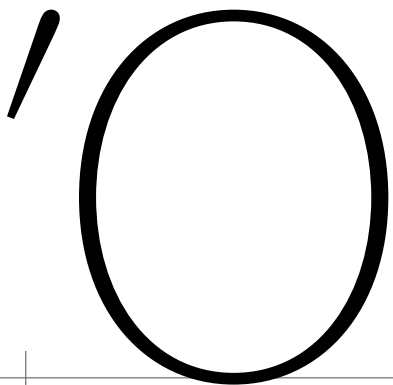
1



2

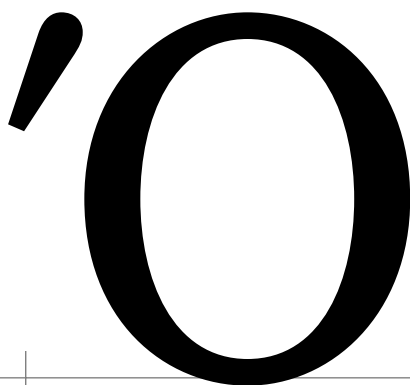


Omicrontonos | 0̇ | U+038C



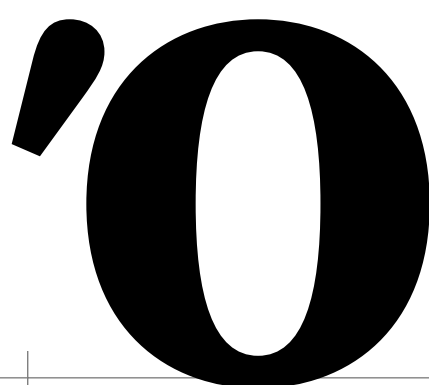
A thin, black outline of the Greek letter Omicron with an acute accent (´) on its top-left side. The character is positioned above a horizontal baseline with four vertical tick marks.

0



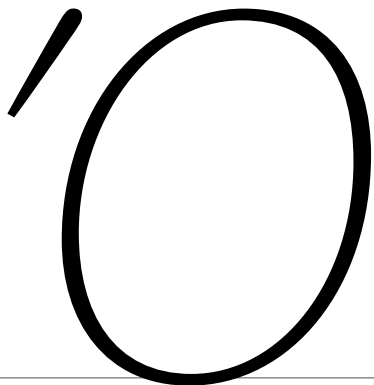
A medium-weight, black outline of the Greek letter Omicron with an acute accent (´) on its top-left side. The character is positioned above a horizontal baseline with four vertical tick marks.

1

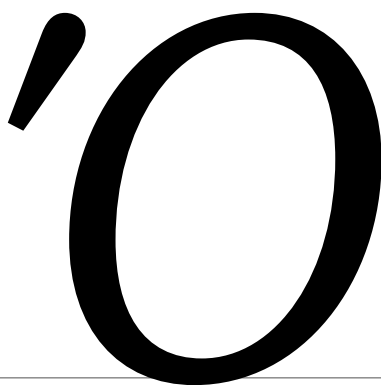


A thick, black outline of the Greek letter Omicron with an acute accent (´) on its top-left side. The character is positioned above a horizontal baseline with four vertical tick marks.

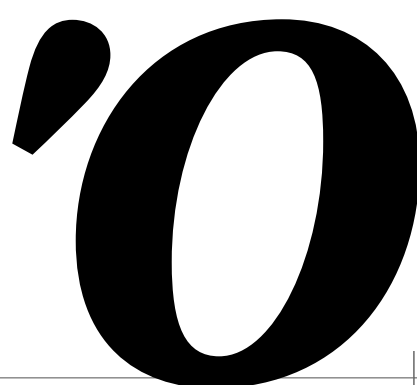
2



A thin, black outline of the Greek letter Omicron with an acute accent (´) on its top-left side. The character is positioned above a horizontal baseline with four vertical tick marks.

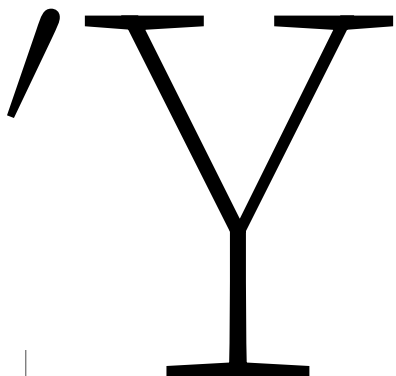


A medium-weight, black outline of the Greek letter Omicron with an acute accent (´) on its top-left side. The character is positioned above a horizontal baseline with four vertical tick marks.

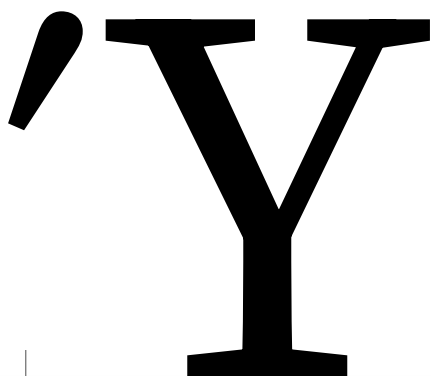


A thick, black outline of the Greek letter Omicron with an acute accent (´) on its top-left side. The character is positioned above a horizontal baseline with four vertical tick marks.

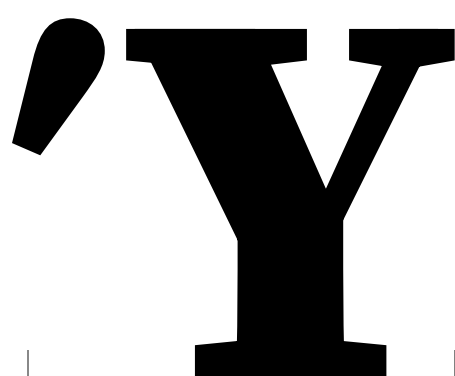
Upsilontonos | Υ | U+038E



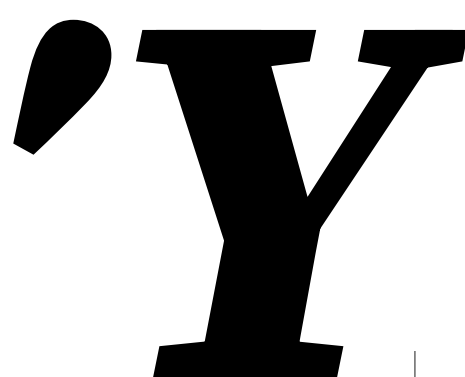
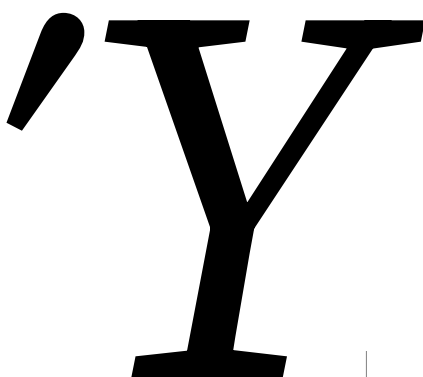
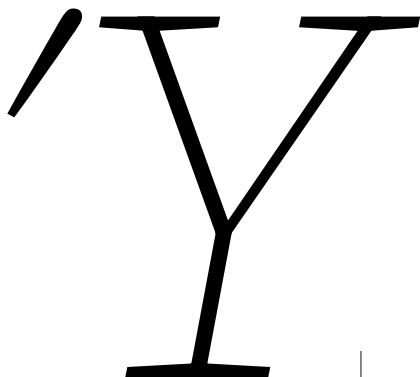
0



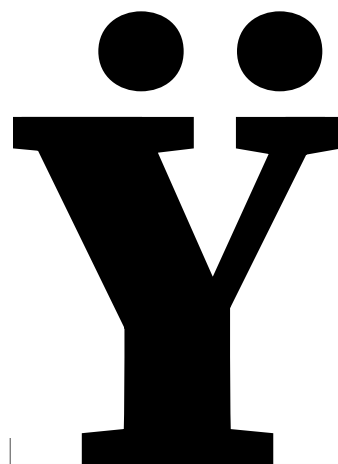
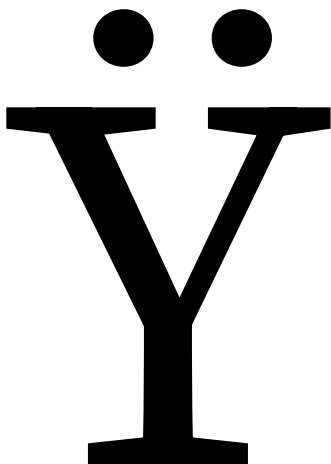
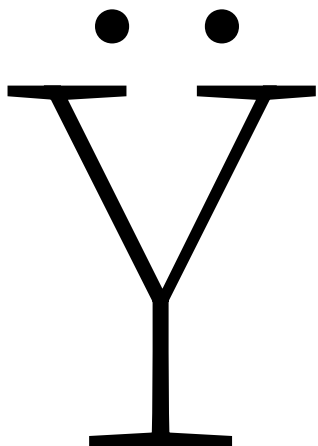
1



2



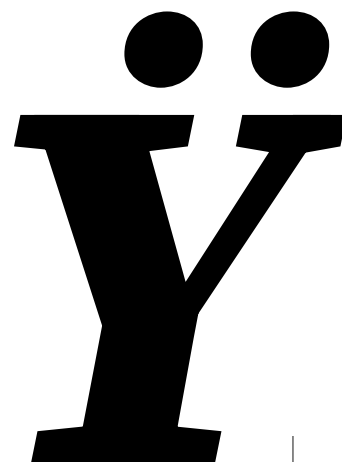
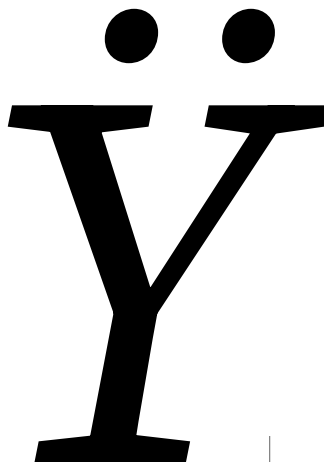
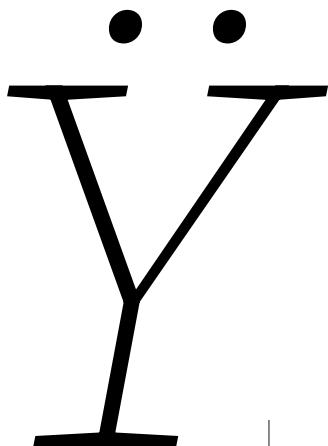
Upsilondieresis | Ÿ | U+03AB



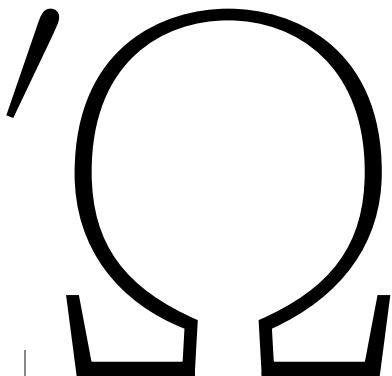
0

1

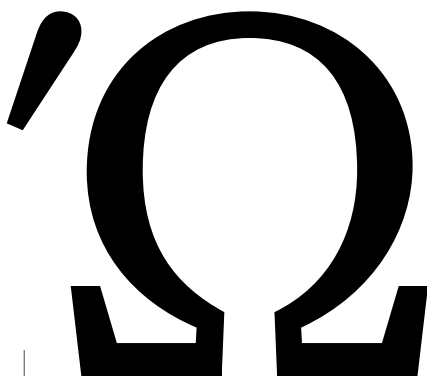
2



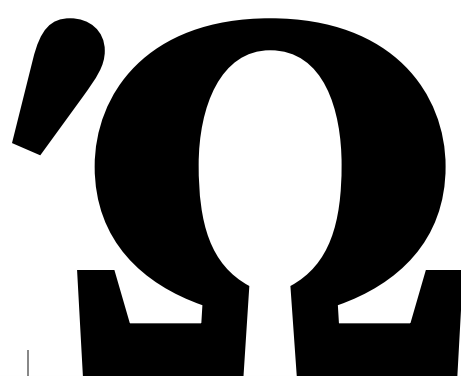
Omegatonos | Ω | U+038F



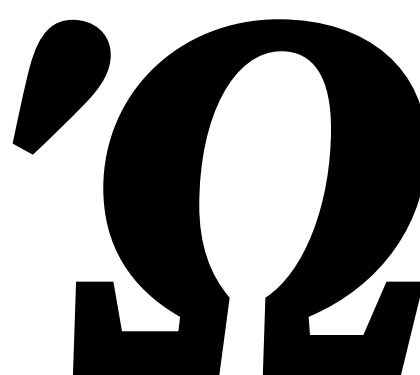
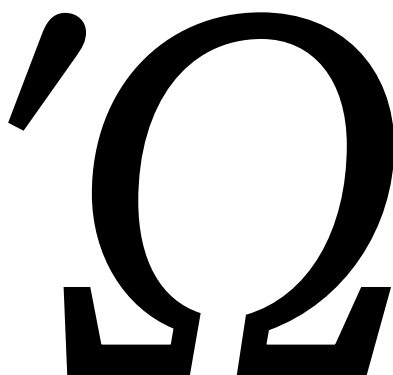
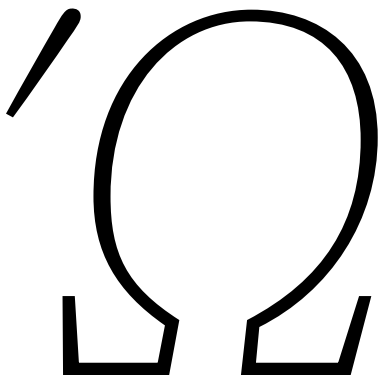
0




1



2

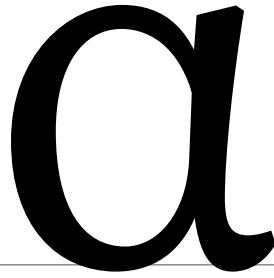


alpha | α | U+03B1



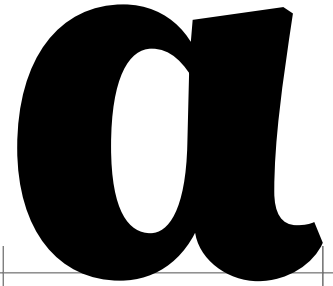
A thin, elegant script version of the Greek letter alpha, featuring a large, rounded bowl and a long, sweeping tail that curves to the right.

0



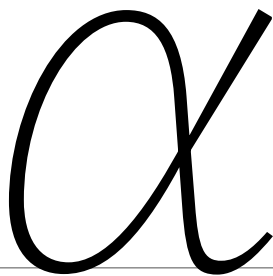
A medium-weight script version of the Greek letter alpha, similar in style to the first but with a slightly thicker stroke and a more pronounced tail.

1

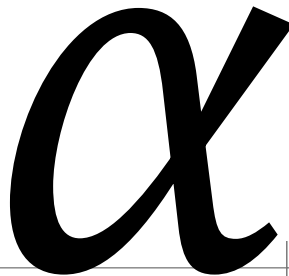


A bold, heavy script version of the Greek letter alpha, with thick strokes and a very pronounced, rounded tail.

2



A thin, cursive version of the Greek letter alpha, characterized by a more compact bowl and a tail that loops back towards the bowl.

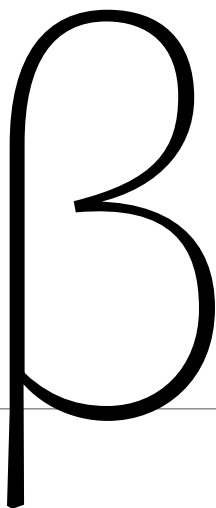


A medium-weight cursive version of the Greek letter alpha, with a similar structure to the first but with a slightly thicker stroke.



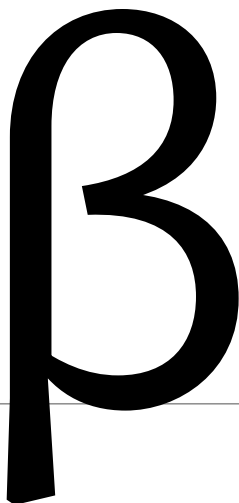
A bold, heavy cursive version of the Greek letter alpha, with thick strokes and a very pronounced, rounded tail.

beta | β | U+03B2



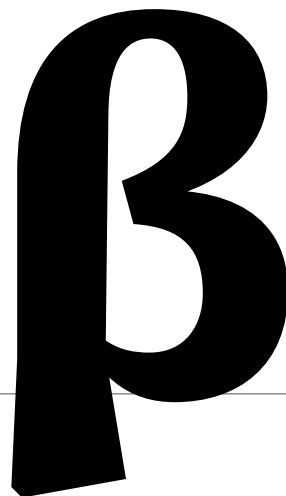
A thin black outline of the Greek letter beta (β) in a classic serif font style. The letter is positioned on a horizontal baseline with tick marks.

0



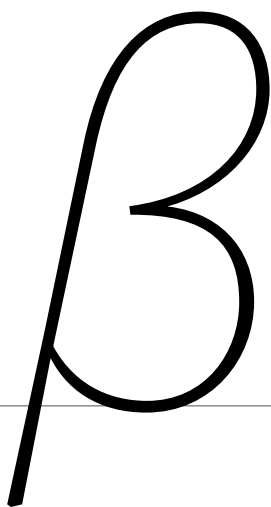
A medium-weight black outline of the Greek letter beta (β) in a classic serif font style. The letter is positioned on a horizontal baseline with tick marks.

1

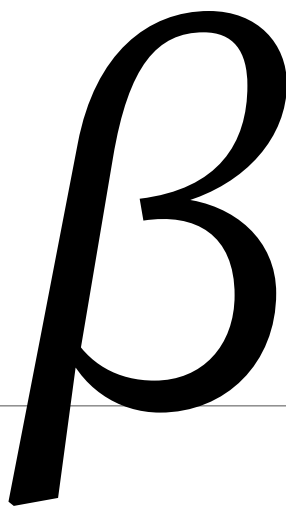


A thick black outline of the Greek letter beta (β) in a classic serif font style. The letter is positioned on a horizontal baseline with tick marks.

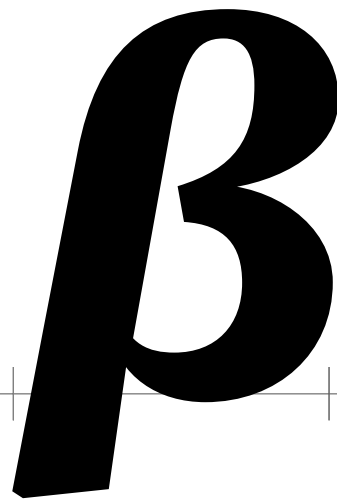
2



A thin black outline of the Greek letter beta (β) in a slanted serif font style. The letter is positioned on a horizontal baseline with tick marks.

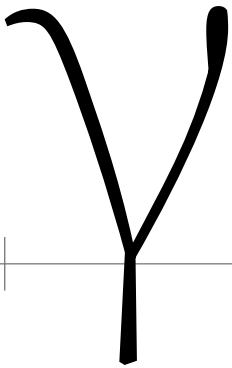


A medium-weight black outline of the Greek letter beta (β) in a slanted serif font style. The letter is positioned on a horizontal baseline with tick marks.

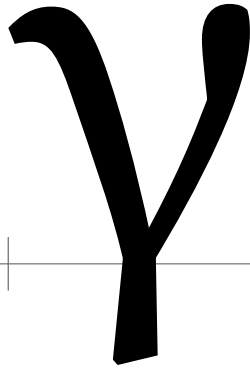


A thick black outline of the Greek letter beta (β) in a slanted serif font style. The letter is positioned on a horizontal baseline with tick marks.

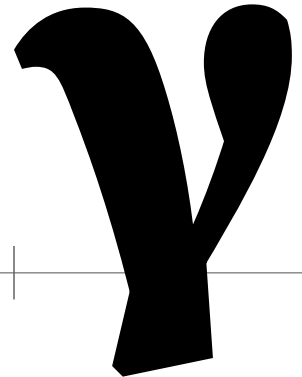
gamma | γ | U+03B3



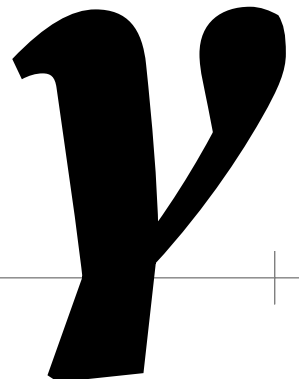
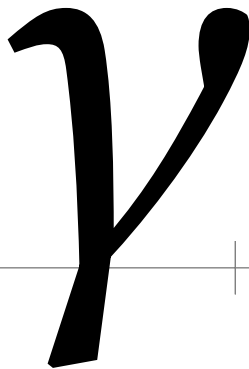
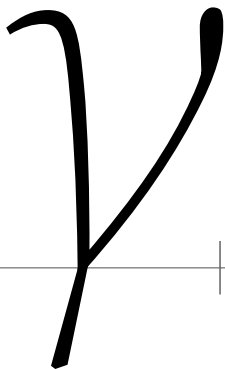
0



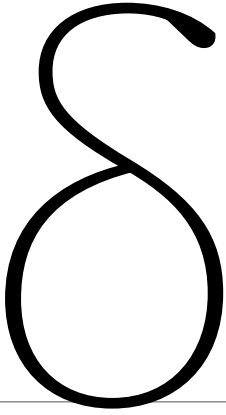
1



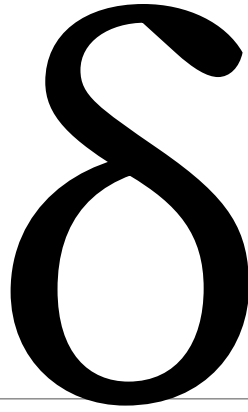
2



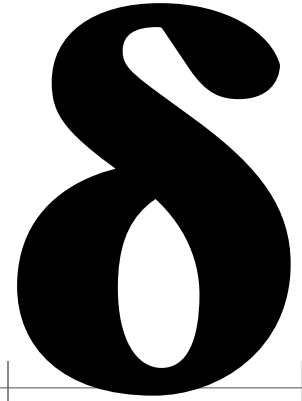
delta | δ | U+03B4



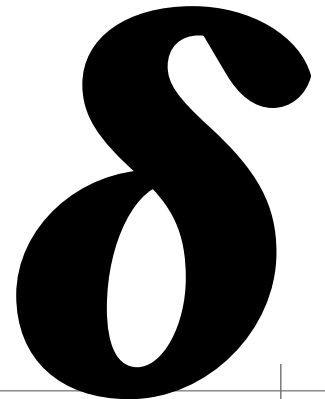
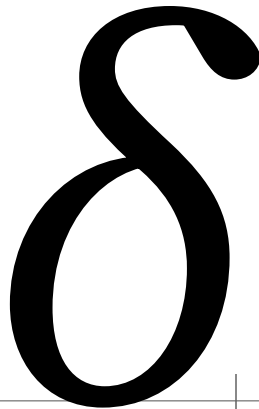
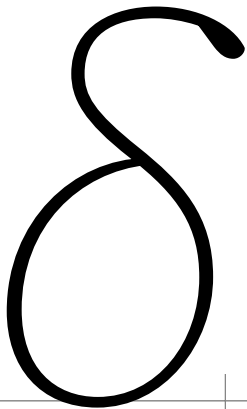
0



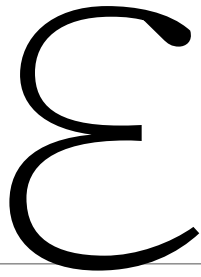
1



2



epsilon | ε | U+03B5

A thin, elegant cursive-style epsilon glyph with a light gray shadow, positioned above a horizontal baseline. The glyph is centered between two vertical tick marks on the baseline.

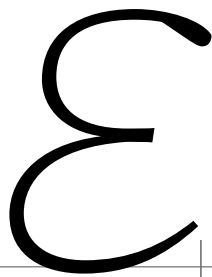
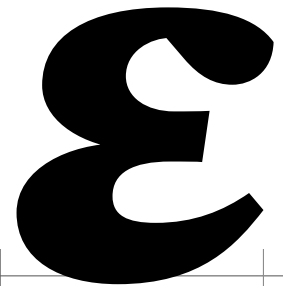
0

A medium-weight cursive-style epsilon glyph with a light gray shadow, positioned above a horizontal baseline. The glyph is centered between two vertical tick marks on the baseline.

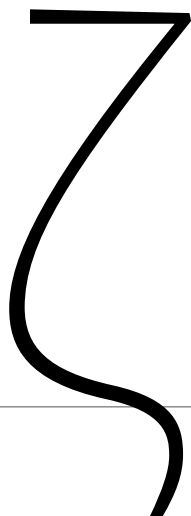
1

A thick, bold cursive-style epsilon glyph with a light gray shadow, positioned above a horizontal baseline. The glyph is centered between two vertical tick marks on the baseline.

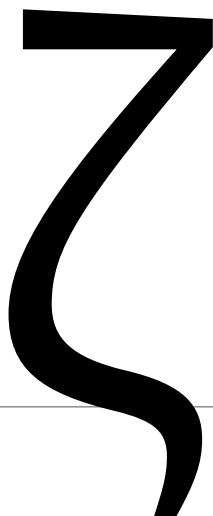
2

A thin, elegant cursive-style epsilon glyph with a light gray shadow, positioned above a horizontal baseline. The glyph is centered between two vertical tick marks on the baseline.A medium-weight cursive-style epsilon glyph with a light gray shadow, positioned above a horizontal baseline. The glyph is centered between two vertical tick marks on the baseline.A thick, bold cursive-style epsilon glyph with a light gray shadow, positioned above a horizontal baseline. The glyph is centered between two vertical tick marks on the baseline.

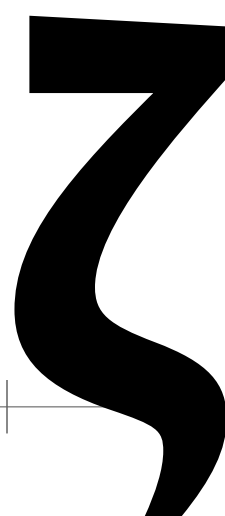
zeta | ζ | U+03B6



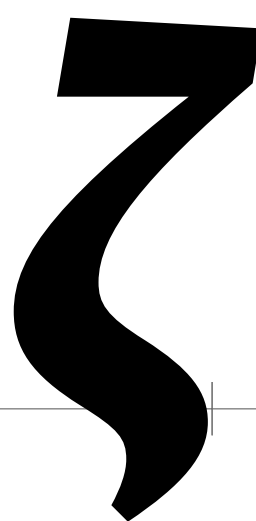
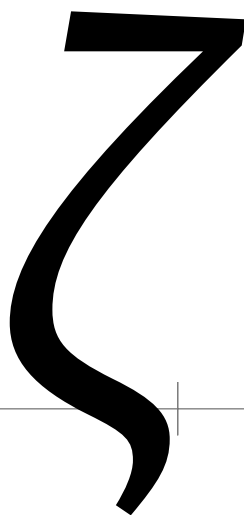
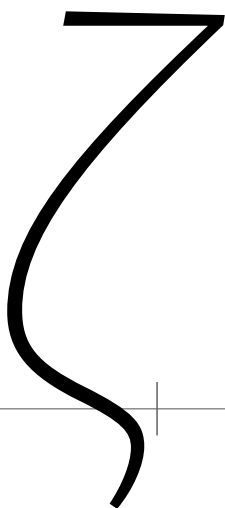
0



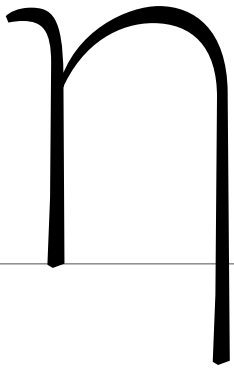
1



2

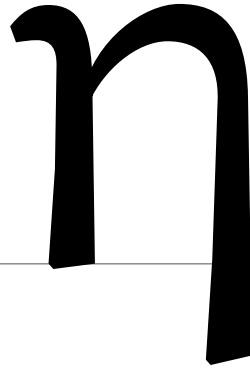


eta | η | U+03B7



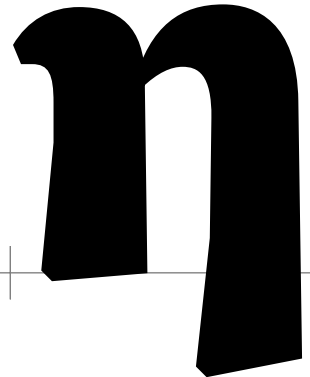
A thin, black, serif-style uppercase letter 'η' with a horizontal baseline. The letter has a small curve at the top left and a vertical stem that tapers slightly at the bottom.

0



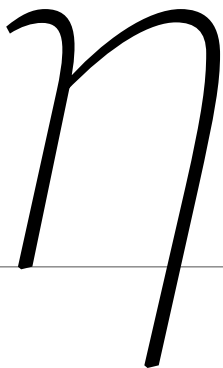
A medium-weight, black, serif-style uppercase letter 'η' with a horizontal baseline. The letter has a small curve at the top left and a vertical stem that tapers slightly at the bottom.

1



A thick, black, serif-style uppercase letter 'η' with a horizontal baseline. The letter has a small curve at the top left and a vertical stem that tapers slightly at the bottom.

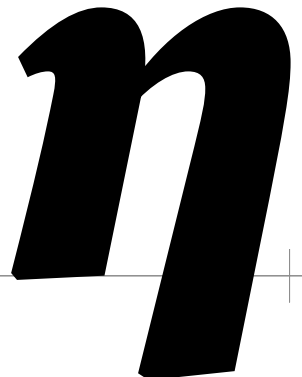
2



A thin, black, italicized serif-style uppercase letter 'η' with a horizontal baseline. The letter has a small curve at the top left and a vertical stem that tapers slightly at the bottom.

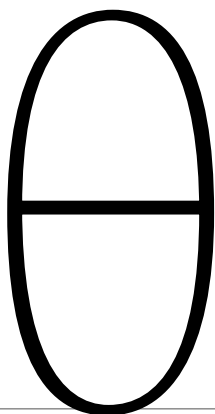


A medium-weight, black, italicized serif-style uppercase letter 'η' with a horizontal baseline. The letter has a small curve at the top left and a vertical stem that tapers slightly at the bottom.

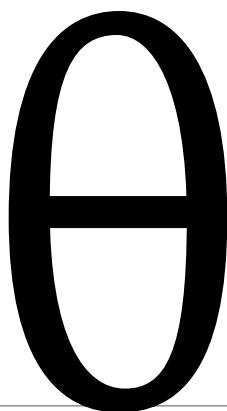


A thick, black, italicized serif-style uppercase letter 'η' with a horizontal baseline. The letter has a small curve at the top left and a vertical stem that tapers slightly at the bottom.

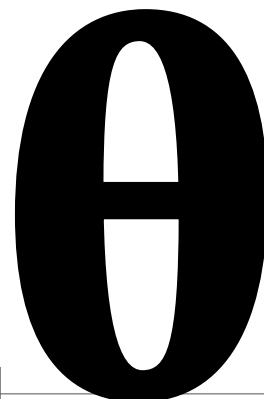
theta | θ | U+03B8



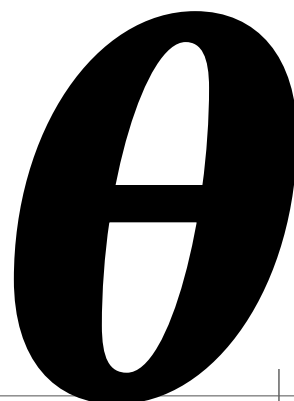
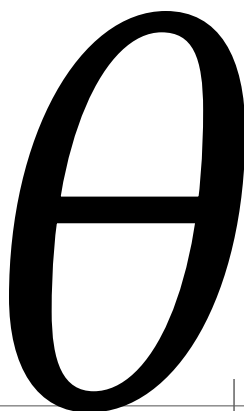
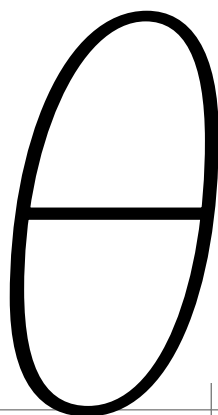
0



1



2



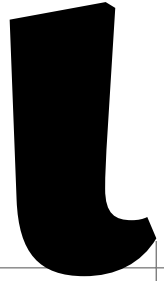
iota | ɿ | U+03B9



0



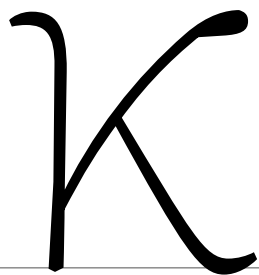
1



2

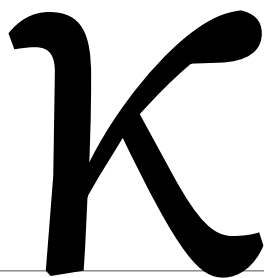


kappa | κ | U+03BA



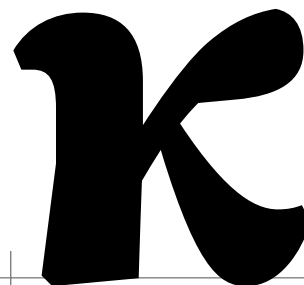
A thin, elegant cursive lowercase kappa character. It features a vertical stem on the left that curves slightly to the right at the top. The main body of the letter is formed by a single stroke that curves from the top right down to the bottom right, ending in a small hook.

0



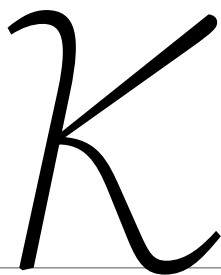
A medium-weight cursive lowercase kappa character. It has a similar structure to the first version but with a thicker, more substantial stroke weight and a slightly more pronounced curve.

1

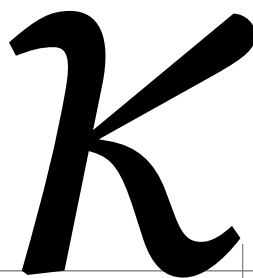


A thick, bold cursive lowercase kappa character. The strokes are significantly heavier than the previous versions, giving it a more graphic and stylized appearance. The curves are more pronounced and the overall form is more compact.

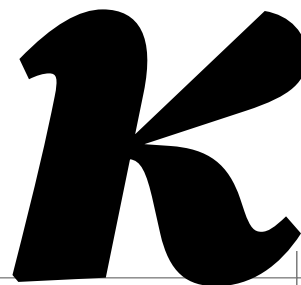
2



A thin, elegant cursive uppercase kappa character. It features a vertical stem on the left that curves slightly to the right at the top. The main body of the letter is formed by a single stroke that curves from the top right down to the bottom right, ending in a small hook.

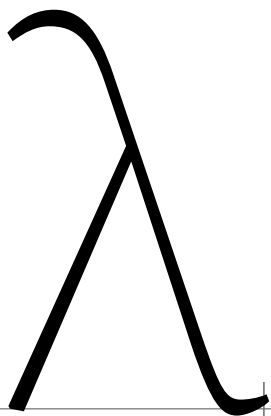


A medium-weight cursive uppercase kappa character. It has a similar structure to the first version but with a thicker, more substantial stroke weight and a slightly more pronounced curve.

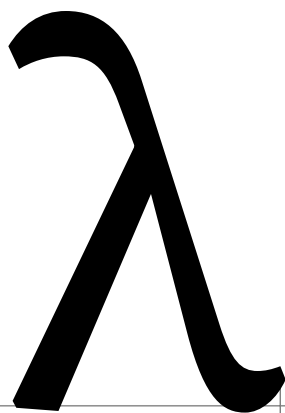


A thick, bold cursive uppercase kappa character. The strokes are significantly heavier than the previous versions, giving it a more graphic and stylized appearance. The curves are more pronounced and the overall form is more compact.

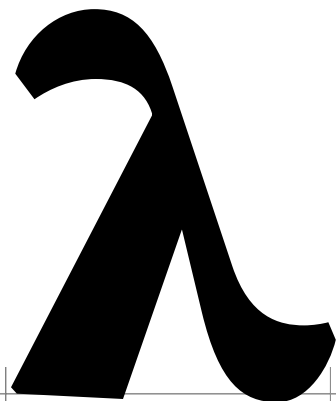
lambda | λ | U+03BB



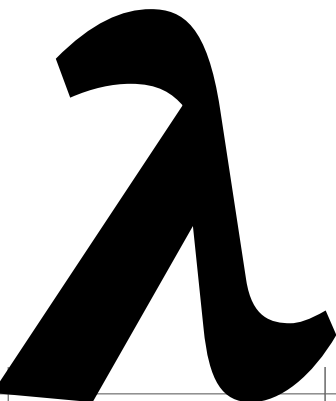
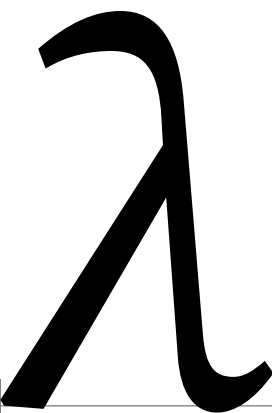
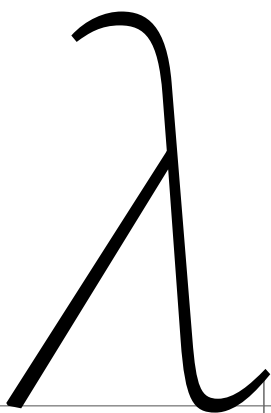
0



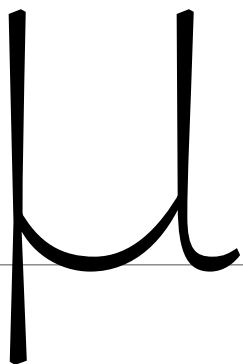
1



2

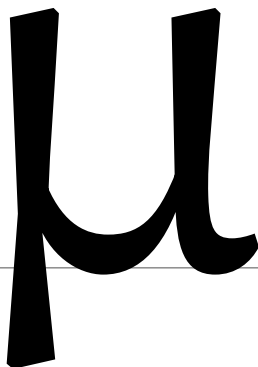


mu | μ | U+03BC



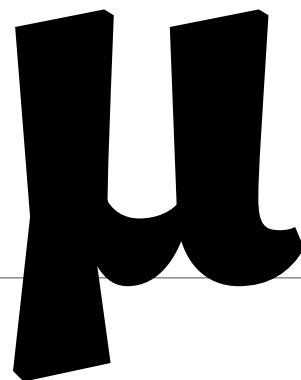
A thin, upright mu character with a slight curve at the bottom. It is positioned on a horizontal baseline with vertical tick marks on either side.

0



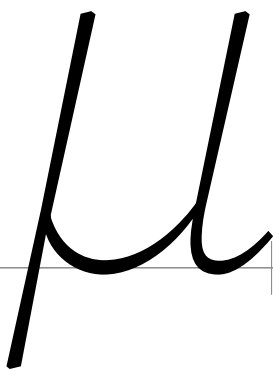
A medium-weight, slightly slanted mu character with a more pronounced curve at the bottom. It is positioned on a horizontal baseline with vertical tick marks on either side.

1

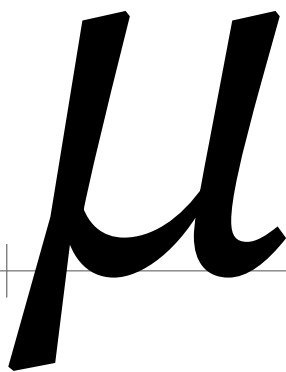


A thick, heavily slanted mu character with a very pronounced curve at the bottom. It is positioned on a horizontal baseline with vertical tick marks on either side.

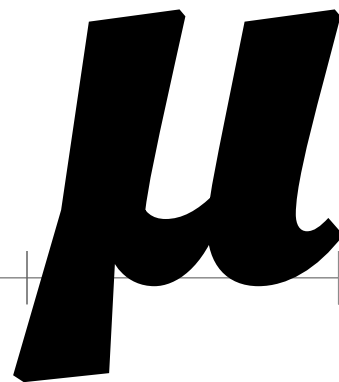
2



A thin, slanted mu character with a slight curve at the bottom. It is positioned on a horizontal baseline with vertical tick marks on either side.

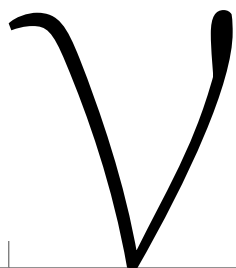


A medium-weight, slanted mu character with a more pronounced curve at the bottom. It is positioned on a horizontal baseline with vertical tick marks on either side.

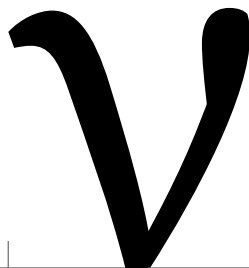


A thick, heavily slanted mu character with a very pronounced curve at the bottom. It is positioned on a horizontal baseline with vertical tick marks on either side.

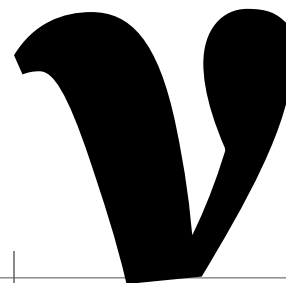
nu | v | U+03BD

A thin, elegant cursive lowercase letter 'v' with a light gray shadow. It has a delicate, hairline stroke and a small loop at the top right.

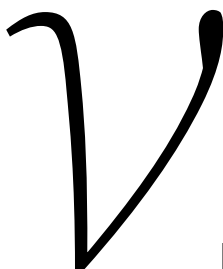
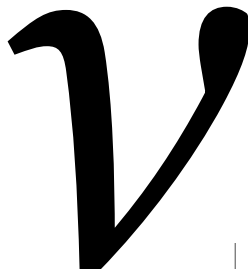
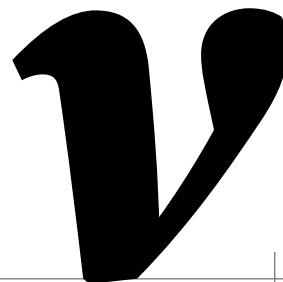
0

A medium-weight cursive lowercase letter 'v' with a light gray shadow. The stroke is thicker than the first stage, and the top loop is more pronounced.

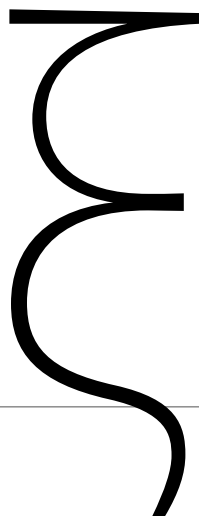
1

A thick, bold cursive lowercase letter 'v' with a light gray shadow. The stroke is very heavy, and the top loop is large and rounded.

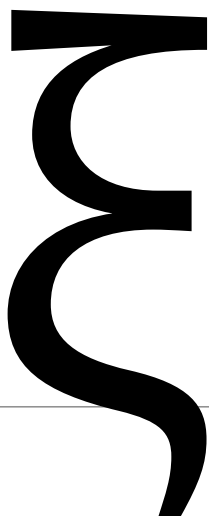
2

A thin, elegant cursive lowercase letter 'v' with a light gray shadow. It has a delicate, hairline stroke and a small loop at the top right.A medium-weight cursive lowercase letter 'v' with a light gray shadow. The stroke is thicker than the first stage, and the top loop is more pronounced.A thick, bold cursive lowercase letter 'v' with a light gray shadow. The stroke is very heavy, and the top loop is large and rounded.

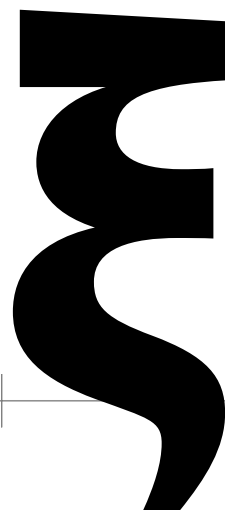
xi | ξ | U+03BE



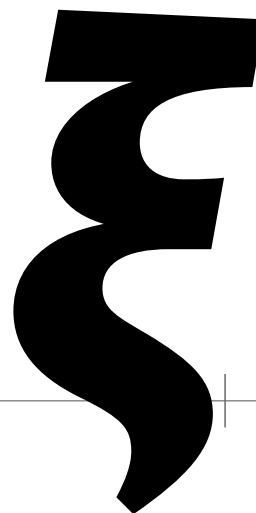
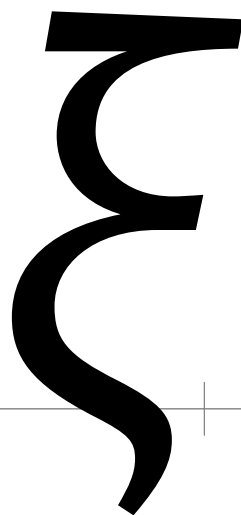
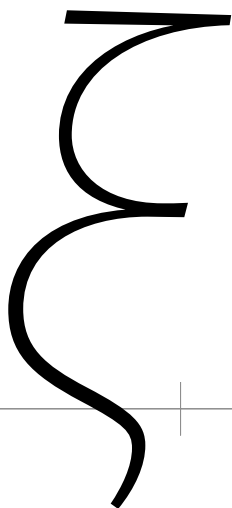
0



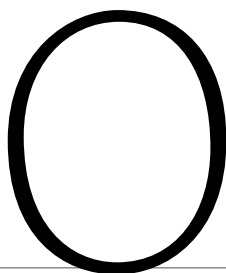
1



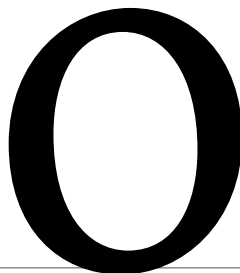
2



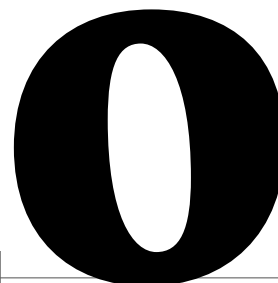
omicron | o | U+03BF



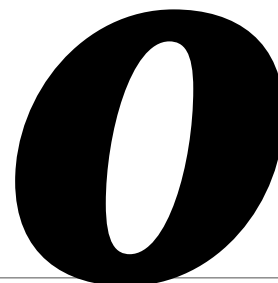
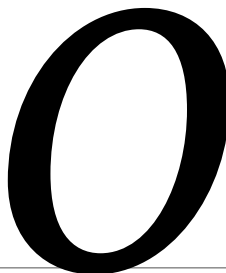
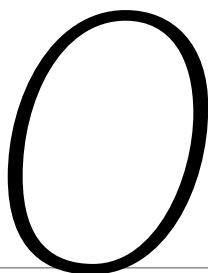
0



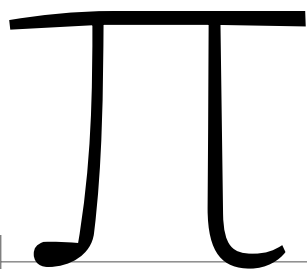
1



2

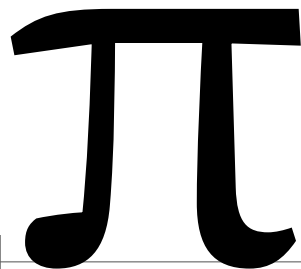


pi | π | U+03C0



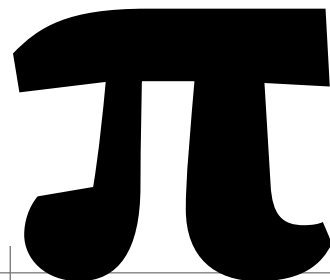
π

0



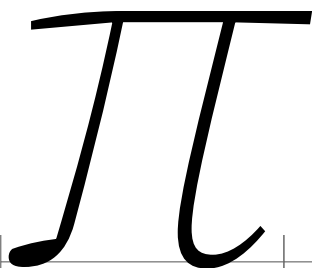
π

1

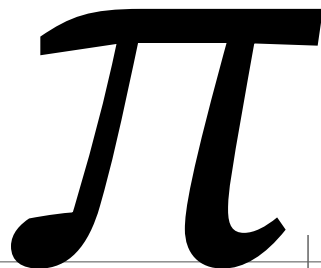


π

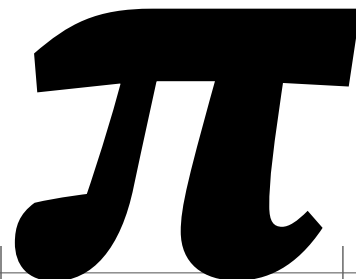
2



π



π



π

rho | ρ | U+03C1

A thin, elegant uppercase rho character with a light, airy feel. The vertical stem is thin and slightly curved, and the bowl is open and delicate.

0

A medium-weight uppercase rho character, more substantial than the first. The stem is thicker and the bowl is more rounded and closed.

1

A very bold, heavy uppercase rho character. The stem is thick and slightly slanted, and the bowl is very full and rounded.

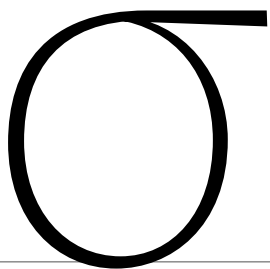
2

A thin, elegant uppercase rho character, similar to the first but with a slight slant to the left. The stem is thin and curved, and the bowl is open.

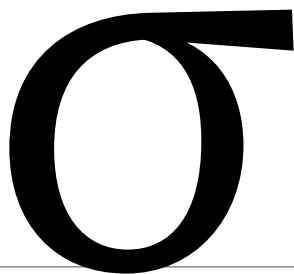
A medium-weight uppercase rho character, similar to the second but with a slight slant to the left. The stem is thicker and the bowl is more rounded.

A very bold, heavy uppercase rho character, similar to the third but with a slight slant to the left. The stem is thick and slanted, and the bowl is very full.

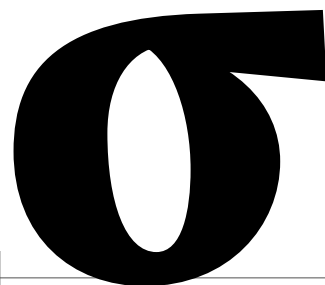
sigma | σ | U+03C3

A thin, black, calligraphic sigma glyph with a light, airy feel. It features a large, open loop on the left and a thin, horizontal tail on the right. The stroke is consistent in thickness.

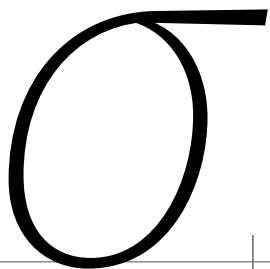
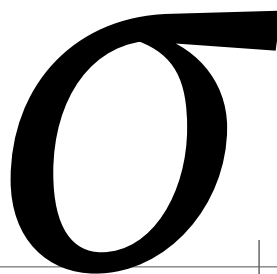
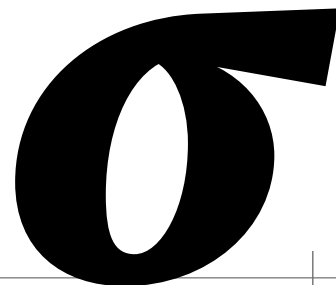
0

A medium-weight, black, calligraphic sigma glyph. It has a more substantial loop and a slightly thicker tail compared to the first glyph. The overall appearance is balanced and elegant.

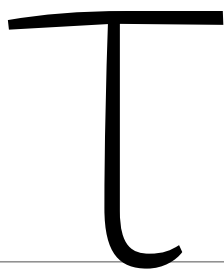
1

A thick, bold, black, calligraphic sigma glyph. The loop is very full and the tail is significantly thicker and more pronounced, giving it a heavy, dramatic look.

2

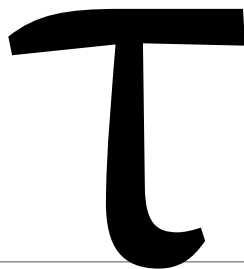
A thin, black, calligraphic sigma glyph, similar to the first one but with a slightly more pronounced loop and a more defined tail.A medium-weight, black, calligraphic sigma glyph, similar to the second one but with a slightly more pronounced loop and a more defined tail.A thick, bold, black, calligraphic sigma glyph, similar to the third one but with a slightly more pronounced loop and a more defined tail.

tau | τ | U+03C4



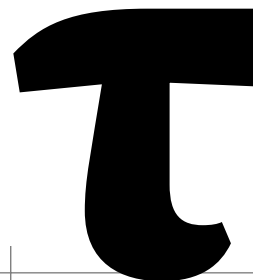
A thin, elegant uppercase tau character with a horizontal top bar and a vertical stem that curves slightly at the bottom.

0



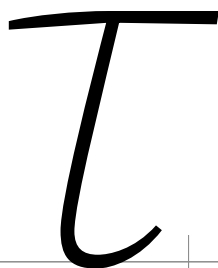
A medium-weight uppercase tau character with a horizontal top bar and a vertical stem that curves slightly at the bottom.

1

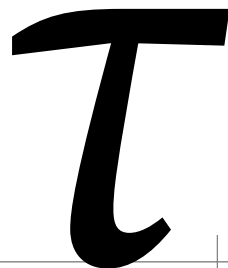


A bold, heavy uppercase tau character with a horizontal top bar and a vertical stem that curves slightly at the bottom.

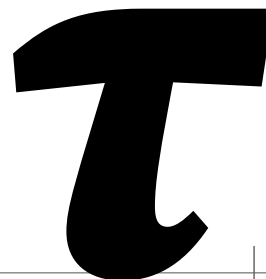
2



A thin, elegant uppercase tau character with a horizontal top bar and a vertical stem that curves slightly at the bottom.



A medium-weight uppercase tau character with a horizontal top bar and a vertical stem that curves slightly at the bottom.



A bold, heavy uppercase tau character with a horizontal top bar and a vertical stem that curves slightly at the bottom.

upsilon | υ | U+03C5

A thin, black outline of the Greek letter Upsilon (υ) is shown above a horizontal baseline. The letter has a slight curve at the top and a small hook on the right side.

0

A medium-weight, black outline of the Greek letter Upsilon (υ) is shown above a horizontal baseline. The letter has a slight curve at the top and a small hook on the right side.

1

A thick, black outline of the Greek letter Upsilon (υ) is shown above a horizontal baseline. The letter has a slight curve at the top and a small hook on the right side.

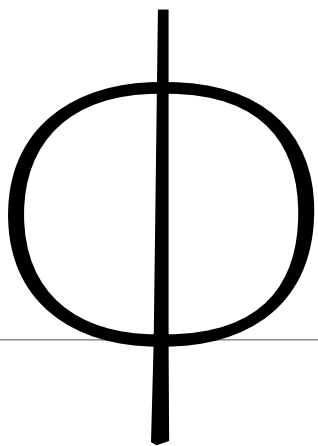
2

A thin, black outline of the Greek letter Upsilon (υ) is shown above a horizontal baseline. The letter has a slight curve at the top and a small hook on the right side.

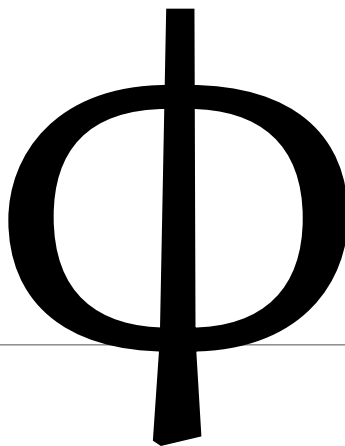
A medium-weight, black outline of the Greek letter Upsilon (υ) is shown above a horizontal baseline. The letter has a slight curve at the top and a small hook on the right side.

A thick, black outline of the Greek letter Upsilon (υ) is shown above a horizontal baseline. The letter has a slight curve at the top and a small hook on the right side.

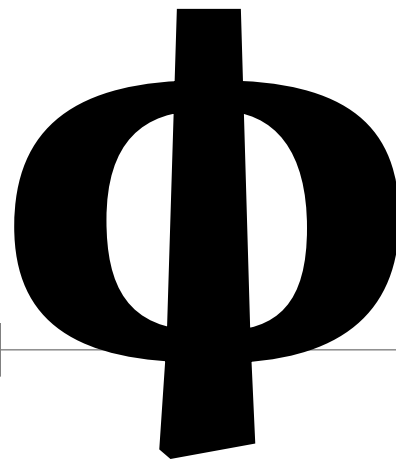
phi | φ | U+03C6



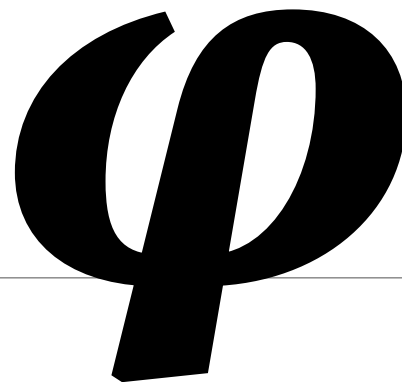
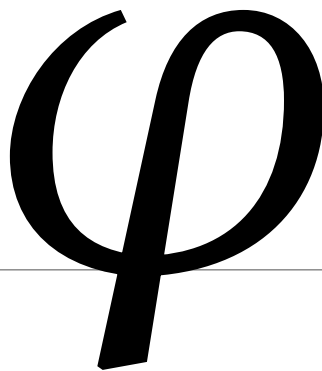
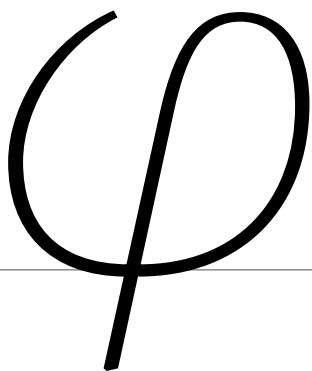
0



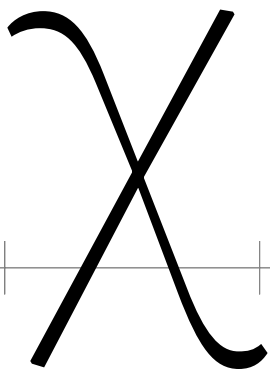
1



2

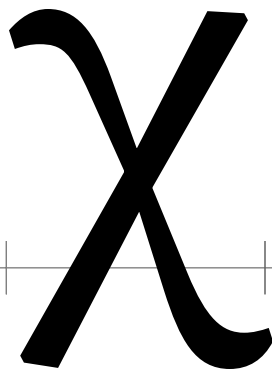


chi | x | U+03C7



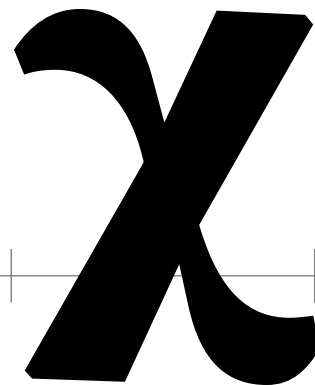
A thin, elegant cursive lowercase letter 'x' is shown. It features a light gray horizontal baseline with two vertical tick marks on either side. The letter's strokes are thin and fluid, with a slight curve at the top and bottom.

0



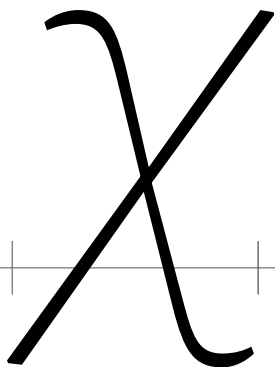
A medium-weight cursive lowercase letter 'x' is shown. It features a light gray horizontal baseline with two vertical tick marks on either side. The letter's strokes are thicker than the first version, maintaining the same elegant cursive style.

1

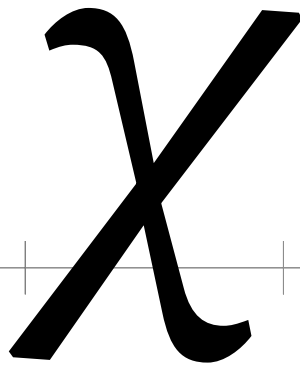


A thick, bold cursive lowercase letter 'x' is shown. It features a light gray horizontal baseline with two vertical tick marks on either side. The letter's strokes are very thick and heavy, giving it a strong, impactful appearance.

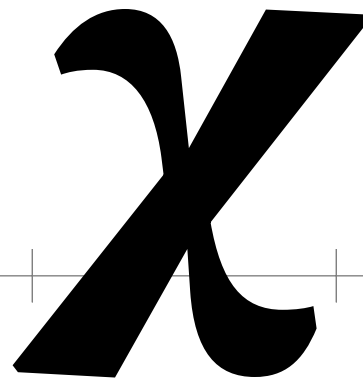
2



A thin, elegant cursive lowercase letter 'x' is shown, identical to the first version. It features a light gray horizontal baseline with two vertical tick marks on either side.

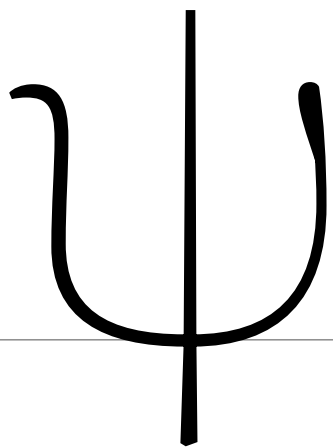


A medium-weight cursive lowercase letter 'x' is shown, identical to the second version. It features a light gray horizontal baseline with two vertical tick marks on either side.

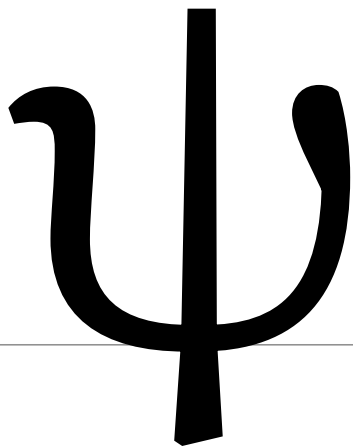


A thick, bold cursive lowercase letter 'x' is shown, identical to the third version. It features a light gray horizontal baseline with two vertical tick marks on either side.

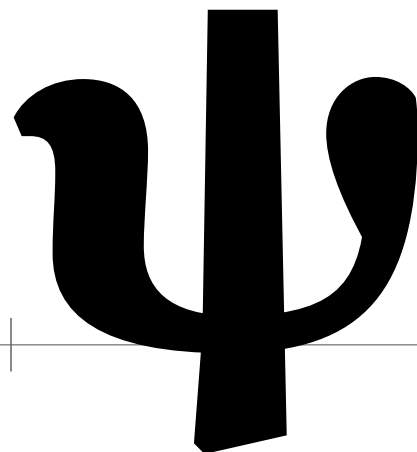
psi | ψ | U+03C8



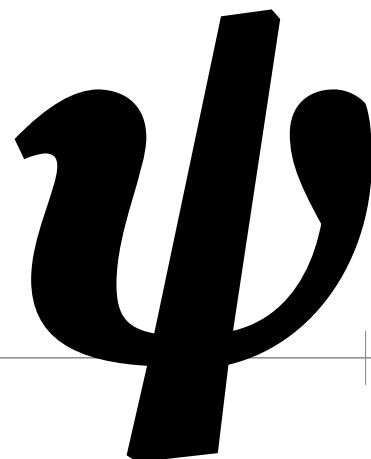
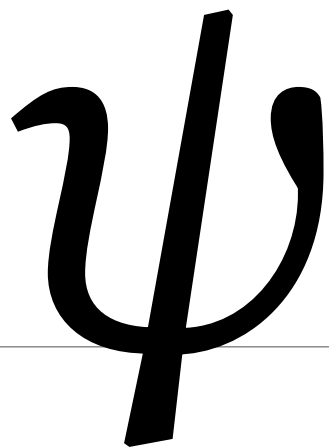
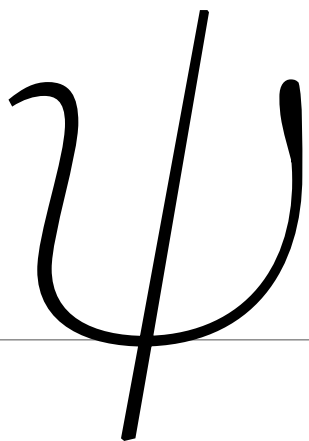
0



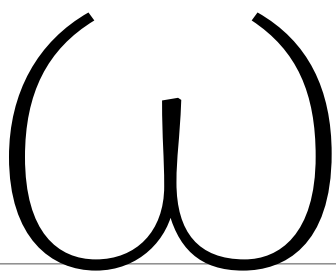
1



2

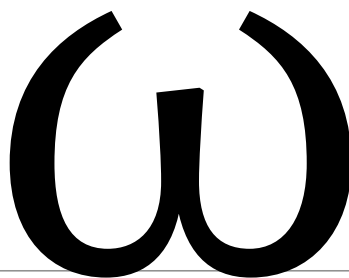


omega | ω | U+03C9



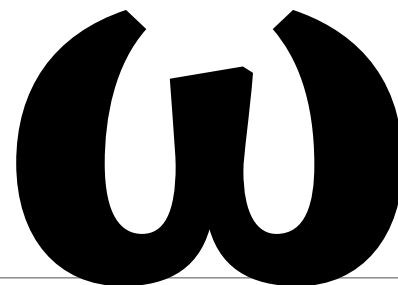
A thin weight version of the Greek letter omega (ω) in a serif font, positioned on a horizontal baseline with vertical tick marks at the start and end of the character.

0



A medium weight version of the Greek letter omega (ω) in a serif font, positioned on a horizontal baseline with vertical tick marks at the start and end of the character.

1



A thick weight version of the Greek letter omega (ω) in a serif font, positioned on a horizontal baseline with vertical tick marks at the start and end of the character.

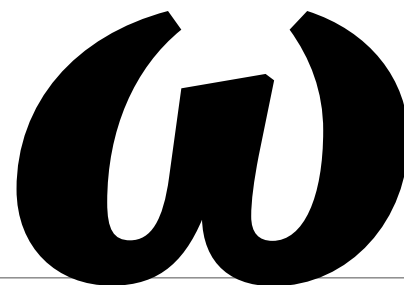
2



A thin weight version of the Greek letter omega (ω) in a script font, positioned on a horizontal baseline with vertical tick marks at the start and end of the character.

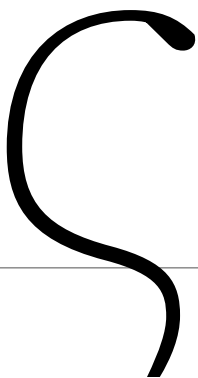


A medium weight version of the Greek letter omega (ω) in a script font, positioned on a horizontal baseline with vertical tick marks at the start and end of the character.

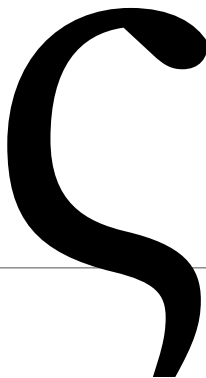


A thick weight version of the Greek letter omega (ω) in a script font, positioned on a horizontal baseline with vertical tick marks at the start and end of the character.

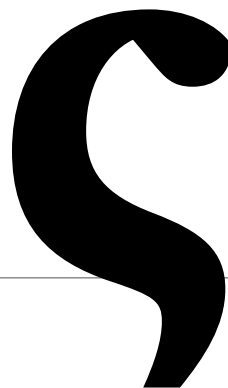
sigma.end | ς | U+03C2



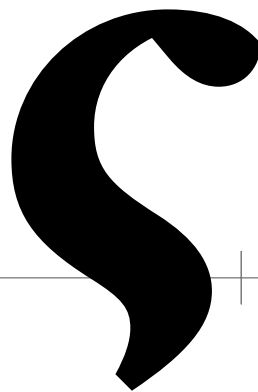
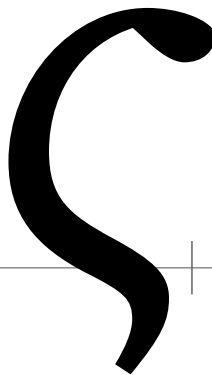
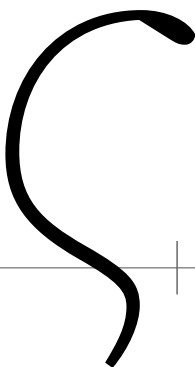
0



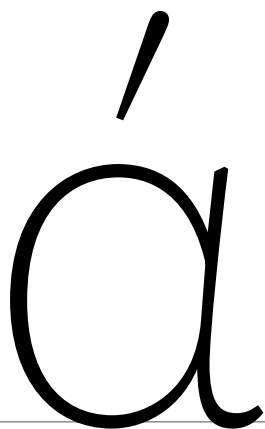
1



2

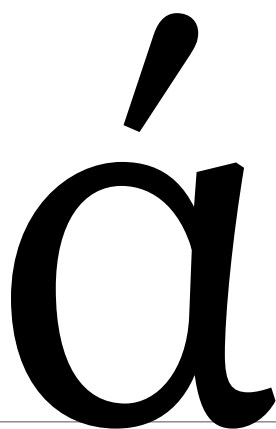


alphatonos | á | U+03AC



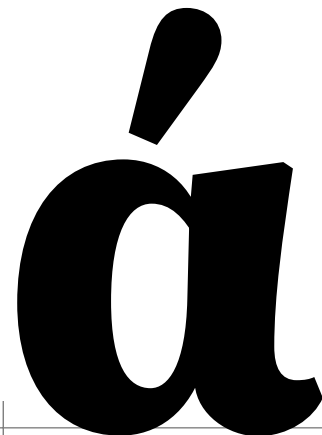
á

0



á

1

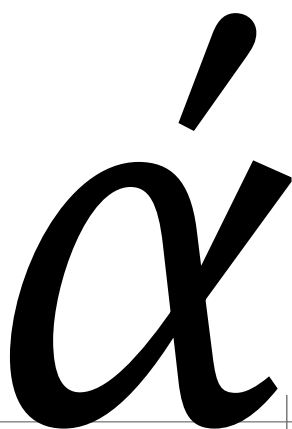


á

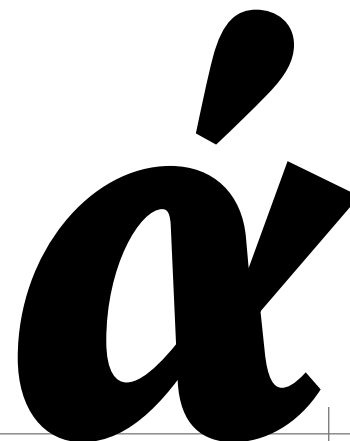
2



á

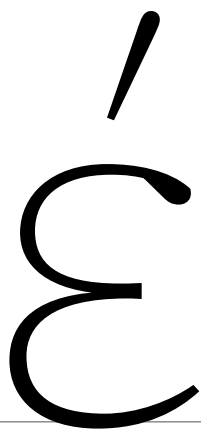


á



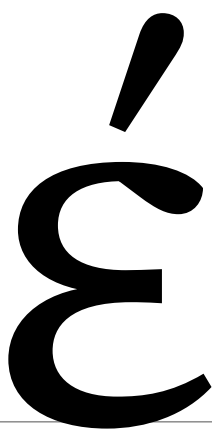
á

epsilontonos | é | U+03AD



é

0



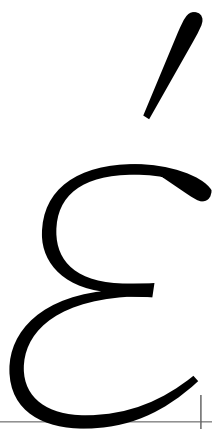
é

1



é

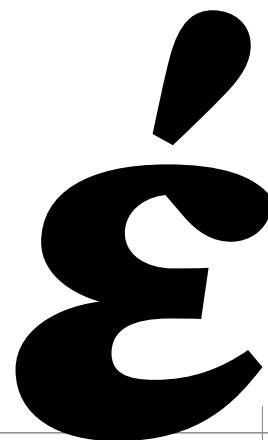
2



é

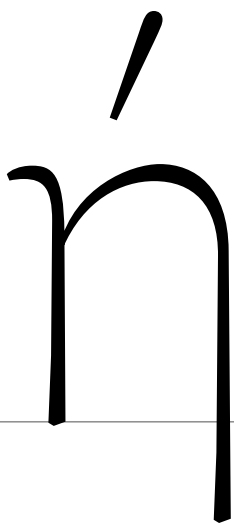


é



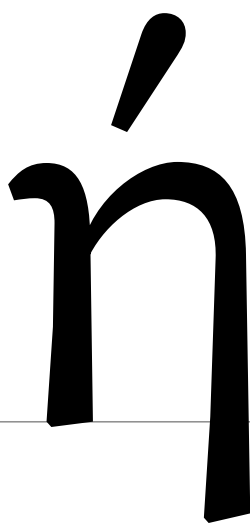
é

etatonos | ῥ | U+03AE



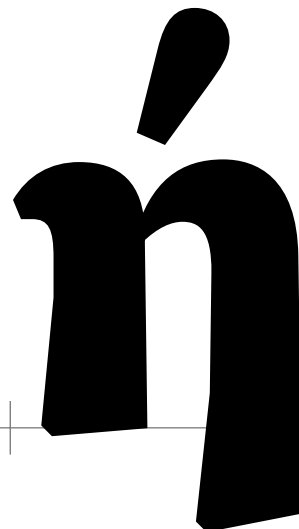
ῥ

0



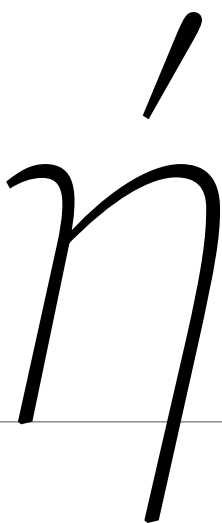
ῥ

1

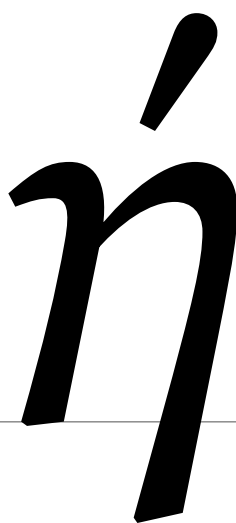


ῥ

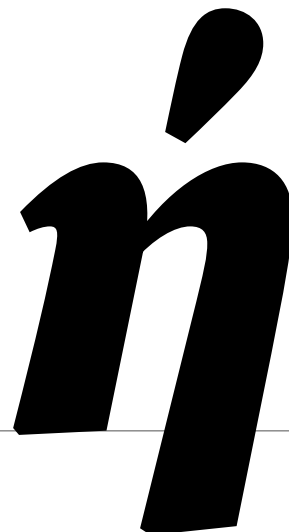
2



ῥ



ῥ



ῥ

iotatonos | í | U+03AF



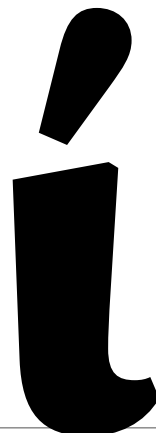
A thin, upright, black character resembling a lowercase 'i' with a dot above it. The dot is a simple diagonal stroke. The stem is a simple vertical line that curves slightly at the bottom. It is positioned above a horizontal baseline with vertical tick marks on either side.

0



A medium-weight, upright, black character resembling a lowercase 'i' with a dot above it. The dot is a simple diagonal stroke. The stem is a simple vertical line that curves slightly at the bottom. It is positioned above a horizontal baseline with vertical tick marks on either side.

1




A thick, upright, black character resembling a lowercase 'i' with a dot above it. The dot is a simple diagonal stroke. The stem is a simple vertical line that curves slightly at the bottom. It is positioned above a horizontal baseline with vertical tick marks on either side.

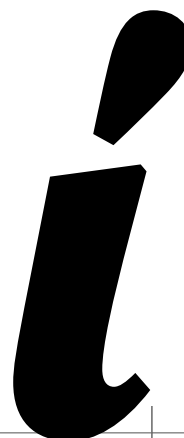
2



A thin, slanted, black character resembling a lowercase 'i' with a dot above it. The dot is a simple diagonal stroke. The stem is a simple vertical line that curves slightly at the bottom. It is positioned above a horizontal baseline with vertical tick marks on either side.

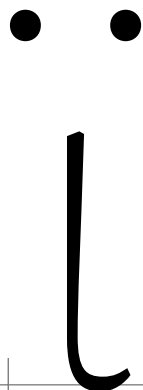


A medium-weight, slanted, black character resembling a lowercase 'i' with a dot above it. The dot is a simple diagonal stroke. The stem is a simple vertical line that curves slightly at the bottom. It is positioned above a horizontal baseline with vertical tick marks on either side.

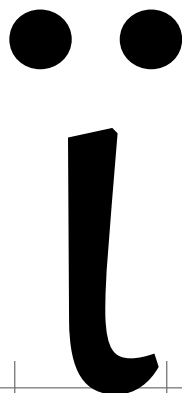


A thick, slanted, black character resembling a lowercase 'i' with a dot above it. The dot is a simple diagonal stroke. The stem is a simple vertical line that curves slightly at the bottom. It is positioned above a horizontal baseline with vertical tick marks on either side.

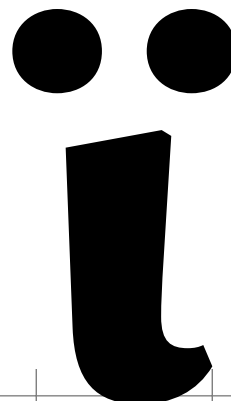
iotadieresis | ï | U+03CA



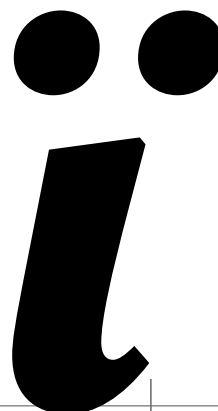
0



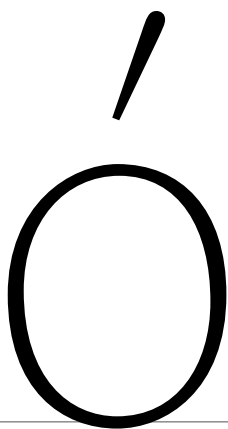
1



2

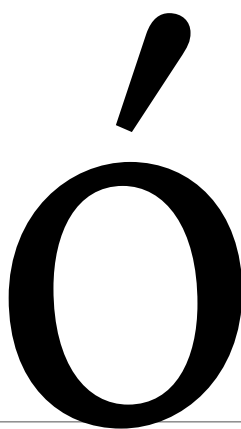


omicrontonos | ó | U+03CC



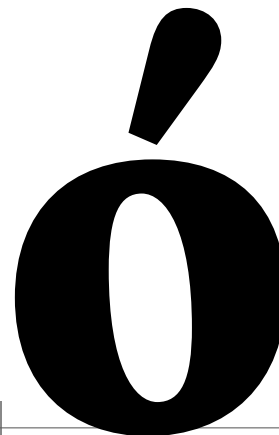
ó

0



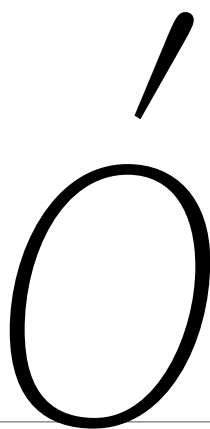
ó

1

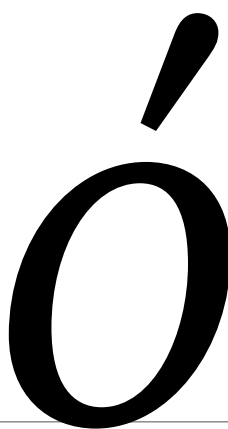


ó

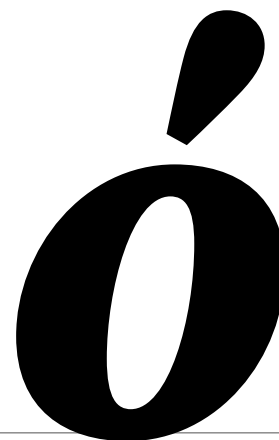
2



ó

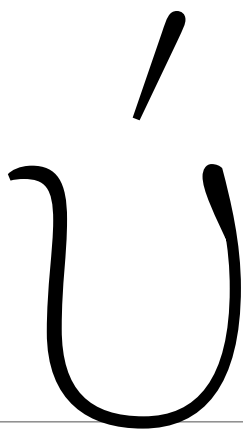


ó



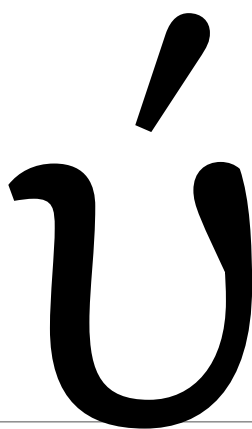
ó

upsilontonos | ú | U+03CD



ú

0



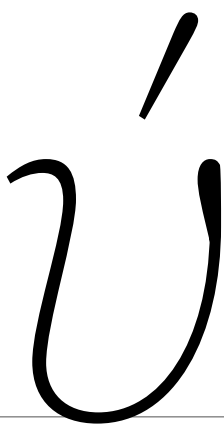
ú

1



ú

2



ú



ú



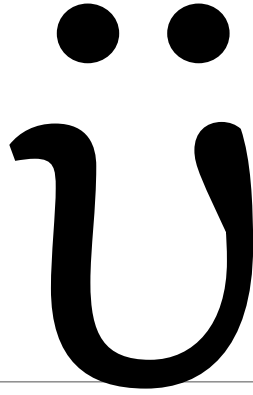
ú

upsilondieresis | ü | U+03CB



A thin weight uppercase letter 'ü' with two small dots above it. The letter is positioned on a horizontal baseline with vertical tick marks on either side.

0



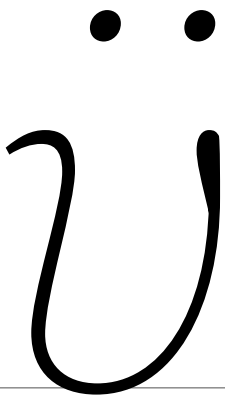
A medium weight uppercase letter 'ü' with two medium-sized dots above it. The letter is positioned on a horizontal baseline with vertical tick marks on either side.

1



A thick weight uppercase letter 'ü' with two large dots above it. The letter is positioned on a horizontal baseline with vertical tick marks on either side.

2



A thin weight lowercase letter 'ü' with two small dots above it. The letter is positioned on a horizontal baseline with vertical tick marks on either side.

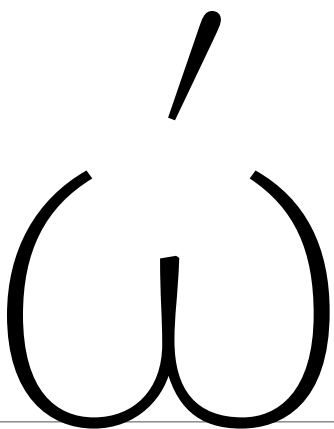


A medium weight lowercase letter 'ü' with two medium-sized dots above it. The letter is positioned on a horizontal baseline with vertical tick marks on either side.

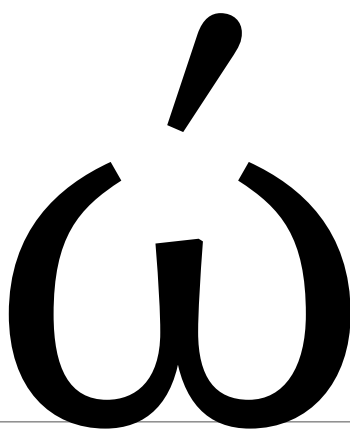


A thick weight lowercase letter 'ü' with two large dots above it. The letter is positioned on a horizontal baseline with vertical tick marks on either side.

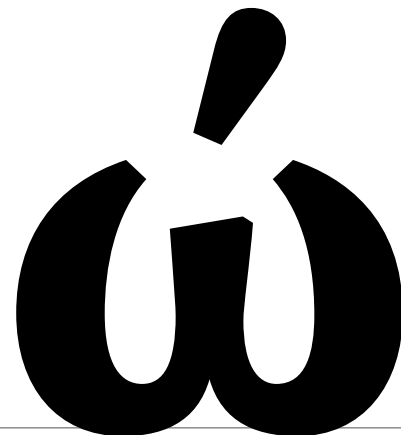
omegatonos | ó | U+03CE



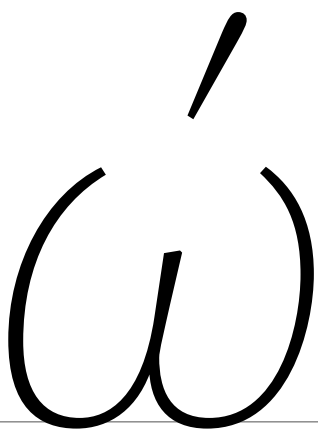
0



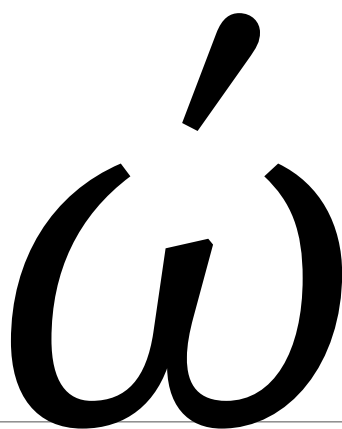
1




2



0

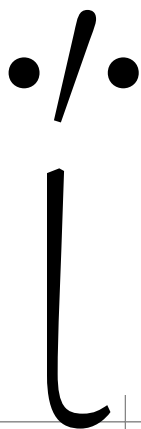


1

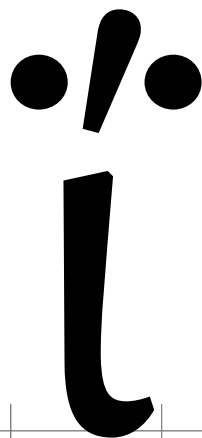


2

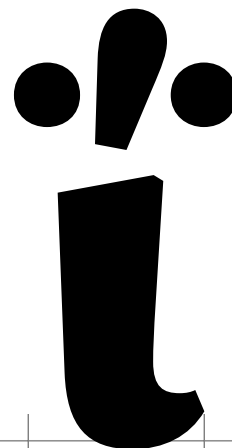
iotadierestonos | ĩ | U+0390



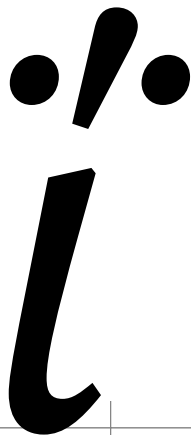
0



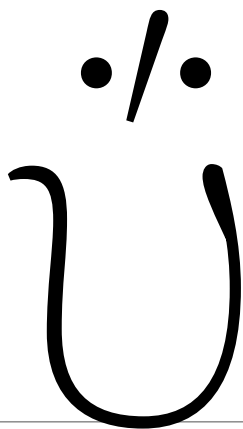
1



2




upsilondieresistonos | ũ | U+03B0



ũ

0



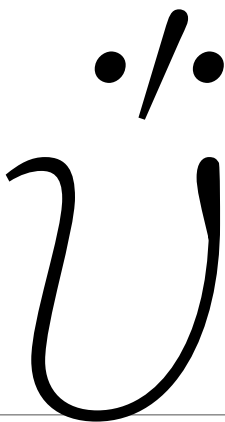
ũ

1



ũ

2



ũ

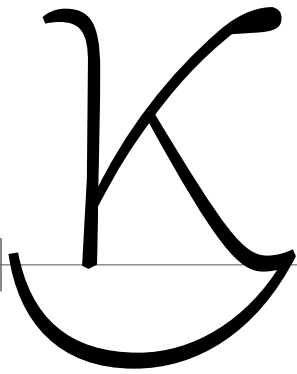


ũ

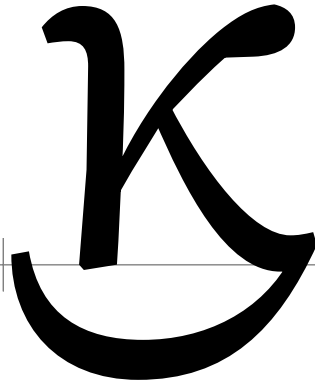


ũ

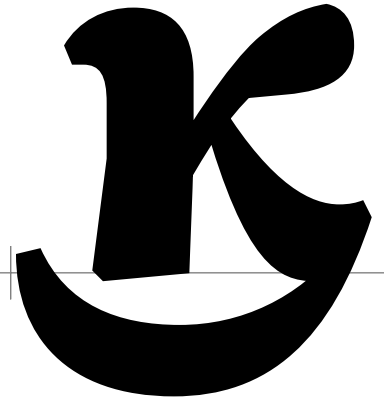
kai | ɣ | U+03D7



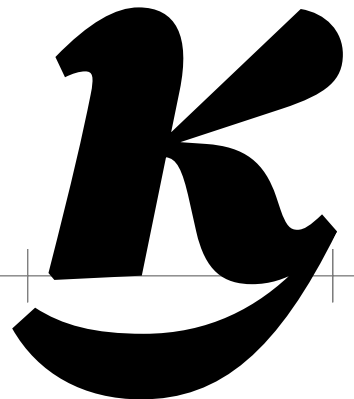
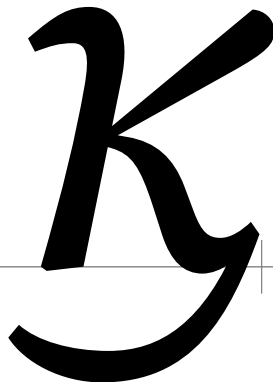
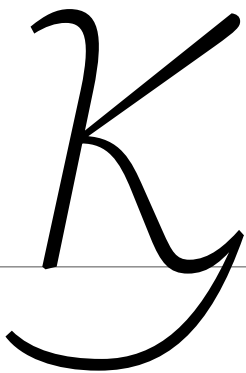
0



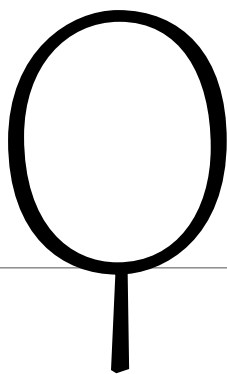
1



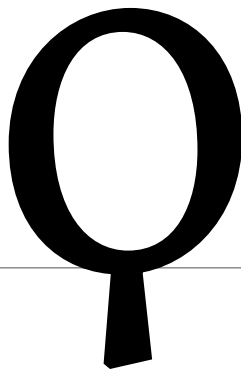
2



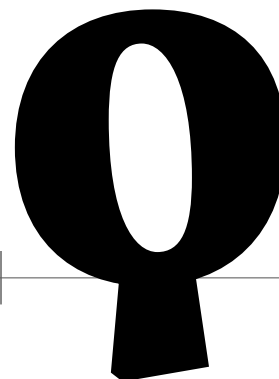
koppa | ϣ | U+03D9



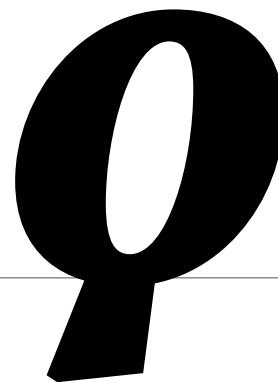
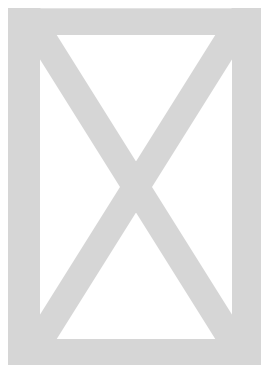
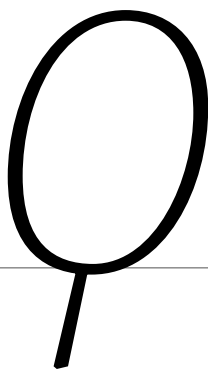
0



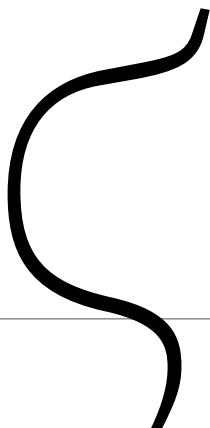
1



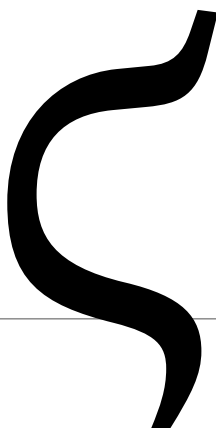
2



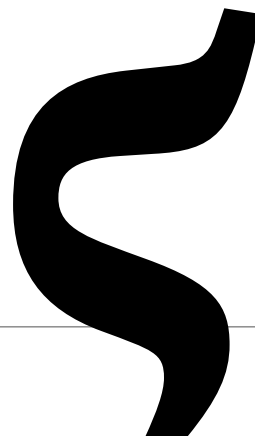
stigma | ζ | U+03DB



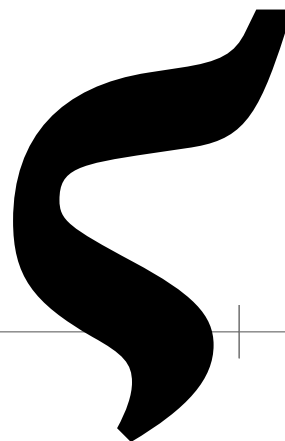
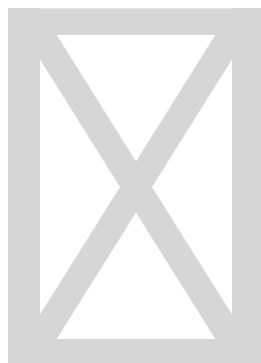
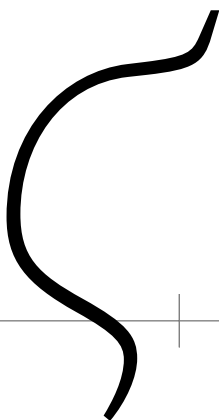
0



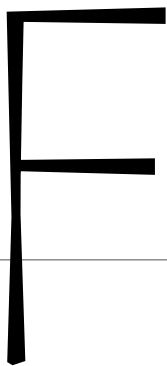
1



2

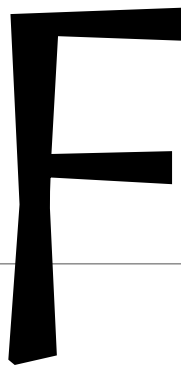


digamma | Ꝛ | U+03DD



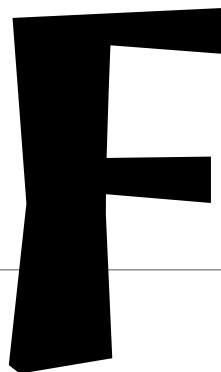
0

A black uppercase digamma glyph with a vertical stem and two horizontal arms, one above and one below the stem. The stem is slightly curved to the left at the bottom.



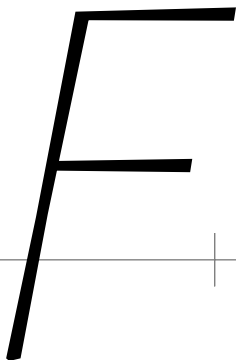
1

A black uppercase digamma glyph with a vertical stem and two horizontal arms, one above and one below the stem. The stem is slightly curved to the left at the bottom.



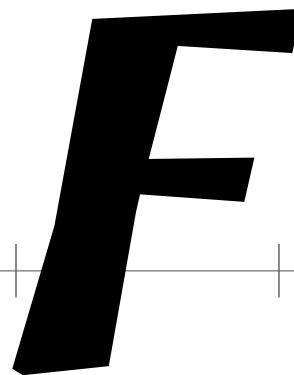
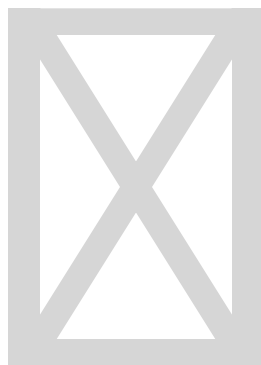
2

A black uppercase digamma glyph with a vertical stem and two horizontal arms, one above and one below the stem. The stem is slightly curved to the left at the bottom.



0

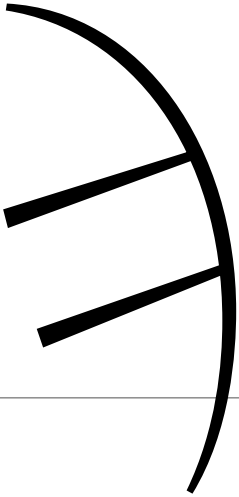
A black lowercase digamma glyph with a vertical stem and two horizontal arms, one above and one below the stem. The stem is slightly curved to the left at the bottom.



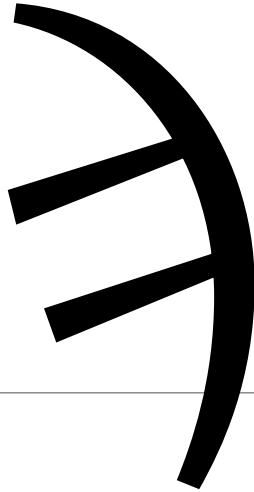
2

A black lowercase digamma glyph with a vertical stem and two horizontal arms, one above and one below the stem. The stem is slightly curved to the left at the bottom.

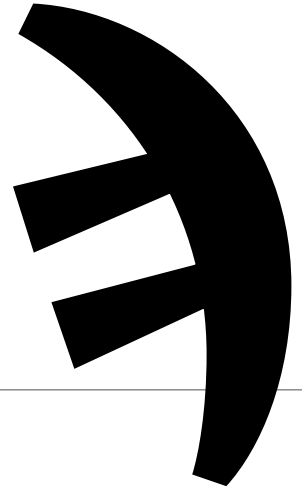
sampi | Ꞑ | U+03E1



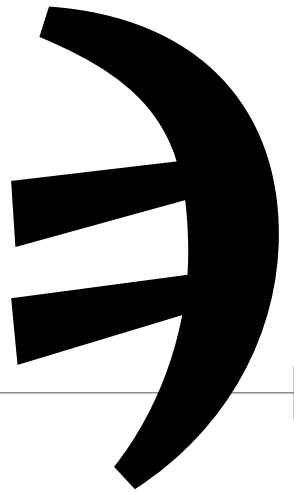
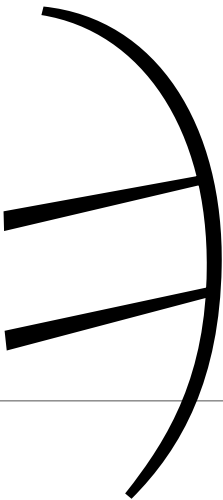
0



1



2



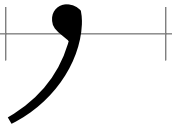
questiongreek | ; | U+037E



0

1

2



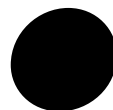
anoteleia | • | U+0387



0

1

2



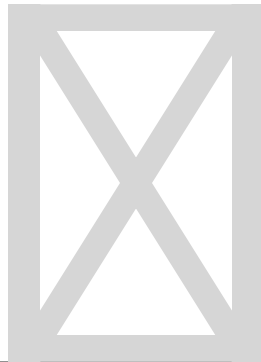
anoteleia.cap



0

1

2



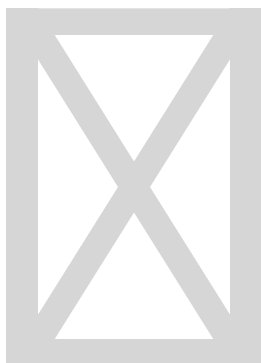
numeralsign | ' | U+0374



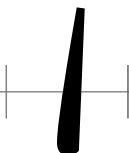
0

1

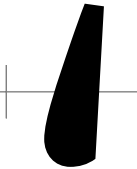
2



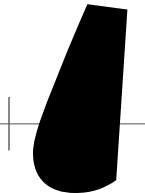
lownumeralsign | , | U+0375



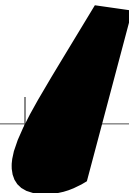
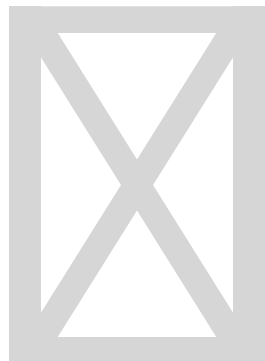
0



1



2



tonos | ´ | U+0384



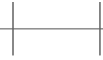
0

1

2



tonos.cap



0

1

2



dieresistonos | ˆ | U+0385



0

1

2



tonoscmb



0

1

2



dieresistonoscmb



0

1

2

