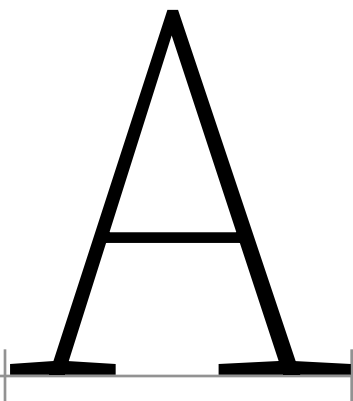


Source Serif Pro Master

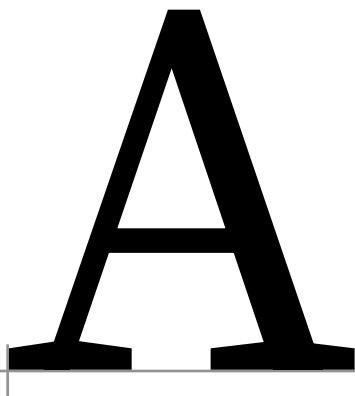
2019-04-12

16:40:35

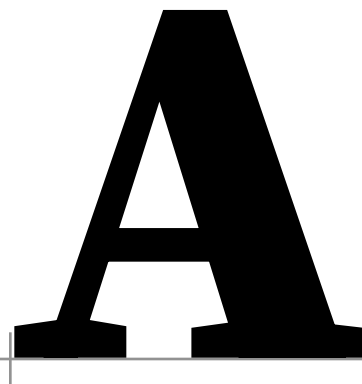
Alpha | A | U+0391



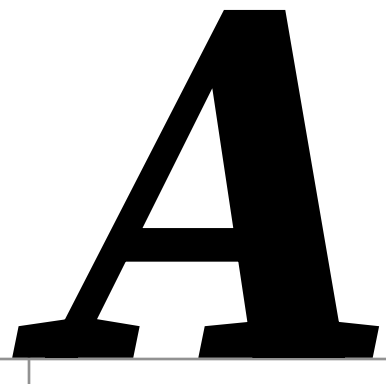
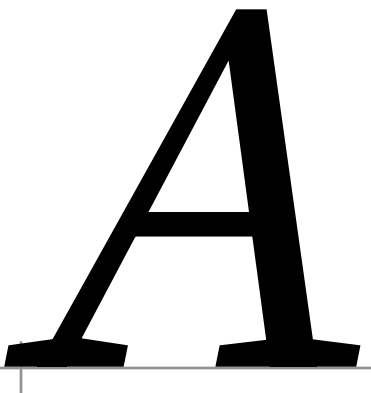
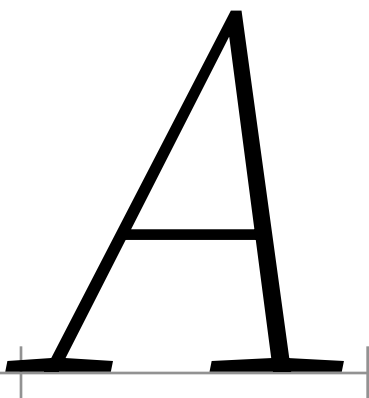
0



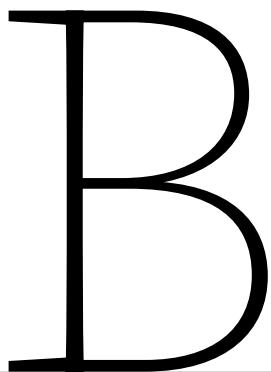
1



2

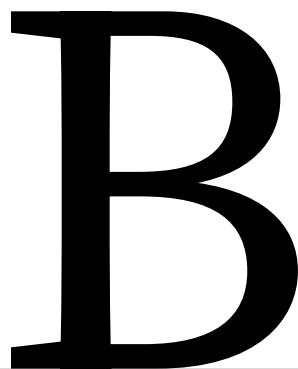


Beta | B | U+0392




B

0



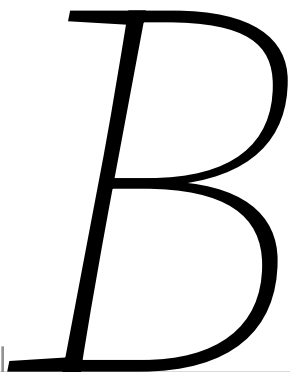
B

1

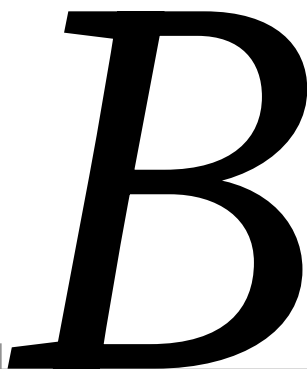


B

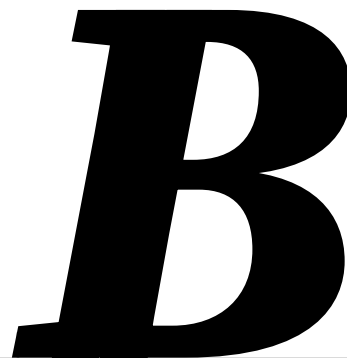
2



*B*

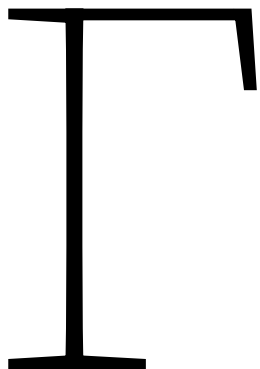


*B*

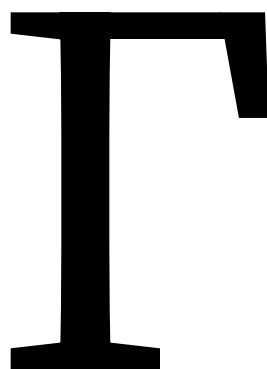


*B*

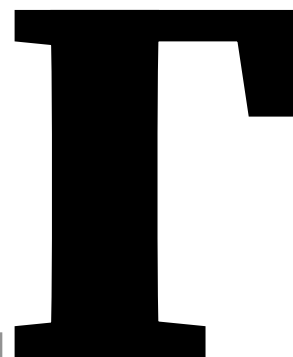
Gamma | Γ | U+0393



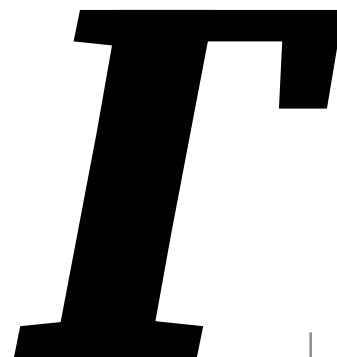
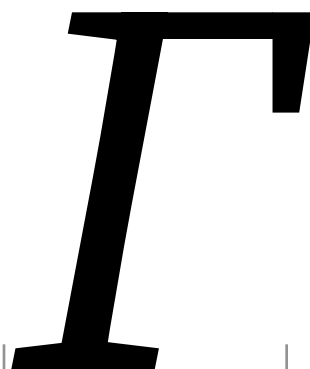
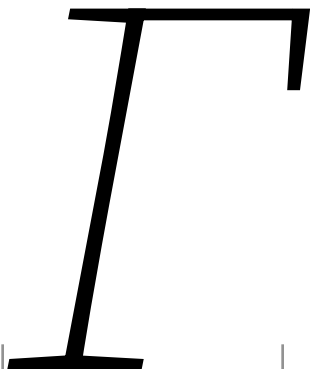
0



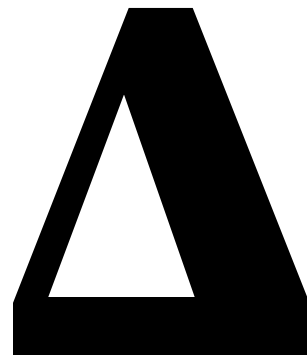
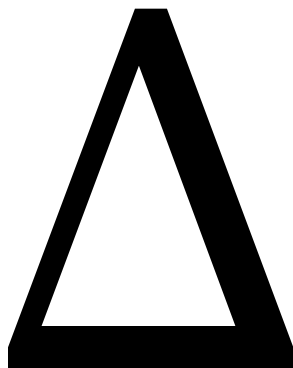
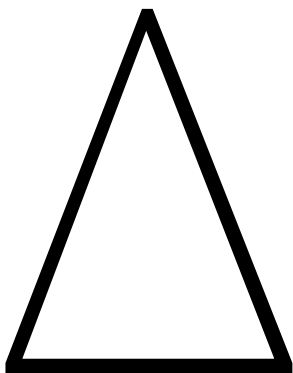
1



2



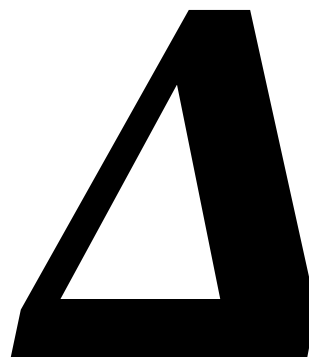
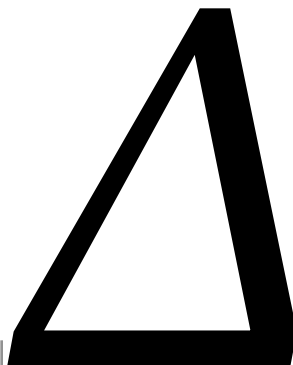
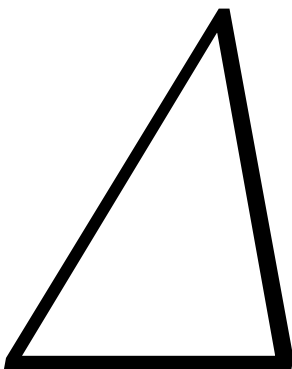
Delta | Δ | U+0394



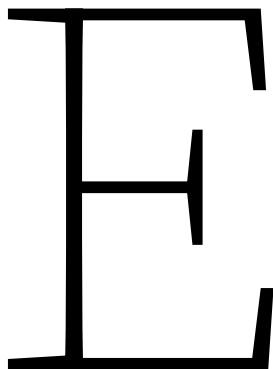
0

1

2

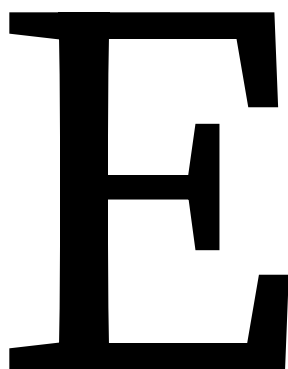


Epsilon | E | U+0395



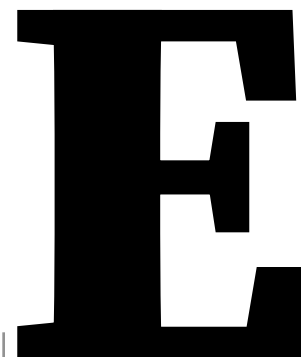
A thin, light-colored uppercase letter 'E' with a simple, clean design. It features a vertical stem on the left and three horizontal bars on the right, with a slight shadow effect.

0



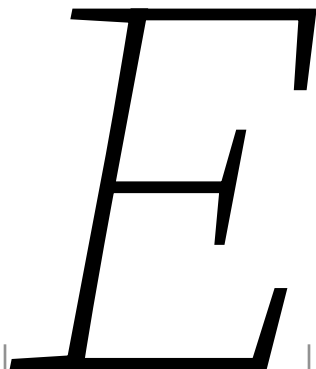
A medium-weight uppercase letter 'E' with a slightly more robust design than the first one. It has a vertical stem and three horizontal bars, with a subtle shadow.

1



A bold, heavy uppercase letter 'E' with a thick vertical stem and three thick horizontal bars. It has a prominent shadow effect.


2



A thin, light-colored italicized uppercase letter 'E'. The vertical stem is slanted to the right, and the horizontal bars are also slanted. It has a slight shadow.

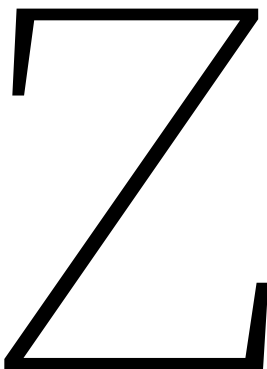


A medium-weight italicized uppercase letter 'E'. The vertical stem is slanted to the right, and the horizontal bars are also slanted. It has a subtle shadow.



A bold, heavy italicized uppercase letter 'E'. The vertical stem is slanted to the right, and the horizontal bars are also slanted. It has a prominent shadow.

Zeta | Z | U+0396



A thin black outline of the uppercase letter Z, positioned on a horizontal baseline. The letter has a slight curve at the top left and bottom right corners.

0



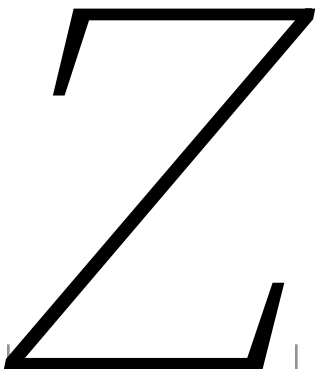
A medium-weight black outline of the uppercase letter Z, positioned on a horizontal baseline. The letter has a slight curve at the top left and bottom right corners.

1




A bold black outline of the uppercase letter Z, positioned on a horizontal baseline. The letter has a slight curve at the top left and bottom right corners.

2



A thin black outline of the lowercase letter z, positioned on a horizontal baseline. The letter has a slight curve at the top left and bottom right corners.



A medium-weight black outline of the lowercase letter z, positioned on a horizontal baseline. The letter has a slight curve at the top left and bottom right corners.



A bold black outline of the lowercase letter z, positioned on a horizontal baseline. The letter has a slight curve at the top left and bottom right corners.

Eta | H | U+0397

A thin, black, serif uppercase letter 'H' with a horizontal crossbar. It is positioned on a horizontal baseline with vertical tick marks at the start and end of the letter's width.

0

A medium-weight, black, serif uppercase letter 'H' with a horizontal crossbar. It is positioned on a horizontal baseline with vertical tick marks at the start and end of the letter's width.

1

A thick, black, serif uppercase letter 'H' with a horizontal crossbar. It is positioned on a horizontal baseline with vertical tick marks at the start and end of the letter's width.

2

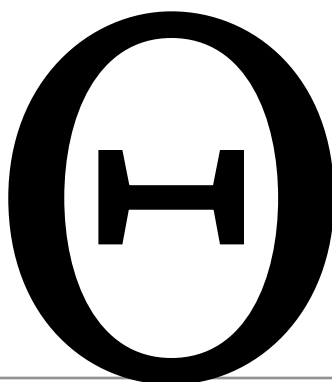
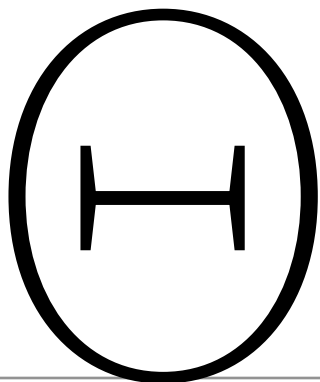
A thin, black, italicized serif uppercase letter 'H' with a horizontal crossbar. The vertical stems are slanted to the right. It is positioned on a horizontal baseline with vertical tick marks at the start and end of the letter's width.

A medium-weight, black, italicized serif uppercase letter 'H' with a horizontal crossbar. The vertical stems are slanted to the right. It is positioned on a horizontal baseline with vertical tick marks at the start and end of the letter's width.

A thick, black, italicized serif uppercase letter 'H' with a horizontal crossbar. The vertical stems are slanted to the right. It is positioned on a horizontal baseline with vertical tick marks at the start and end of the letter's width.



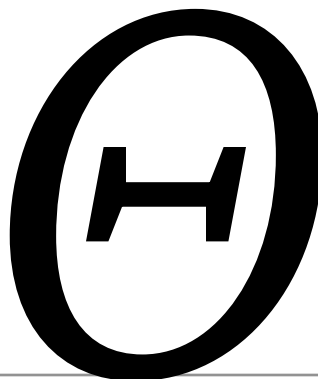
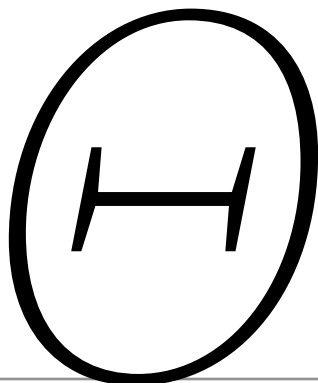
Theta | Θ | U+0398



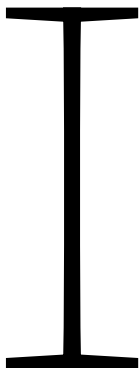
0

1

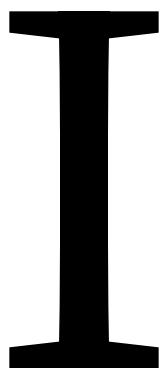
2



Iota | I | U+0399



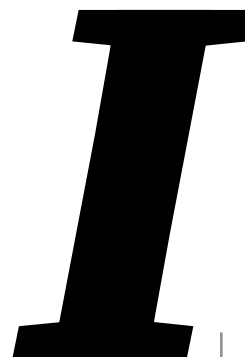
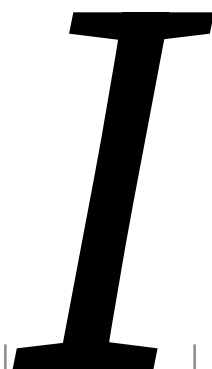
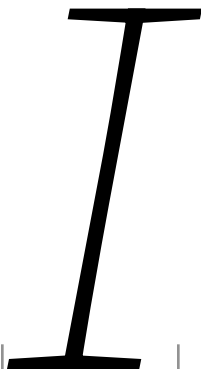
0



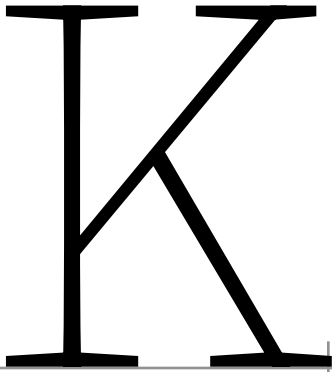
1



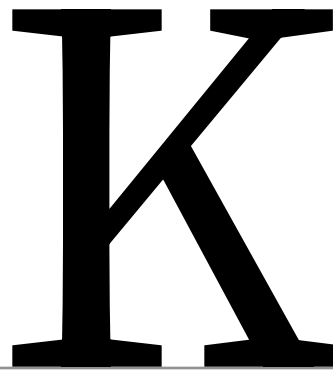
2



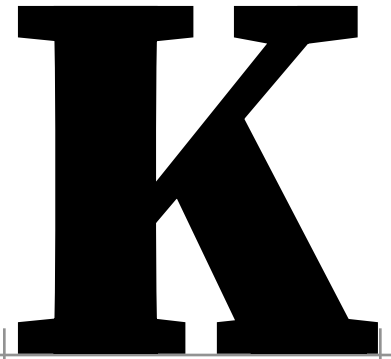
Kappa | K | U+039A

A thin, black outline of the uppercase letter 'K'. It features a vertical stem on the left, a horizontal top bar, and two diagonal strokes forming the right side. The letter is positioned on a horizontal baseline with vertical tick marks at the start and end of its bounding box.

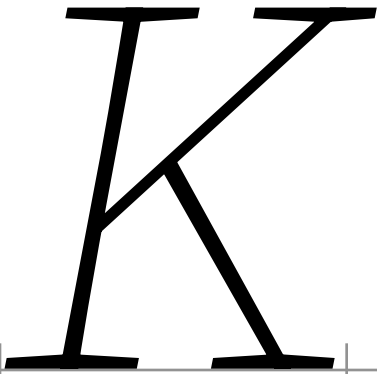
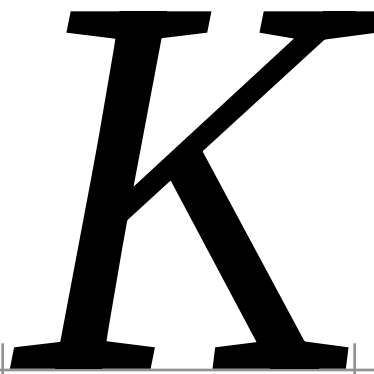
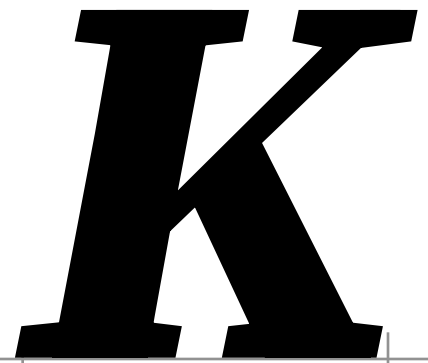
0

A medium-weight, black outline of the uppercase letter 'K'. It features a vertical stem on the left, a horizontal top bar, and two diagonal strokes forming the right side. The letter is positioned on a horizontal baseline with vertical tick marks at the start and end of its bounding box.

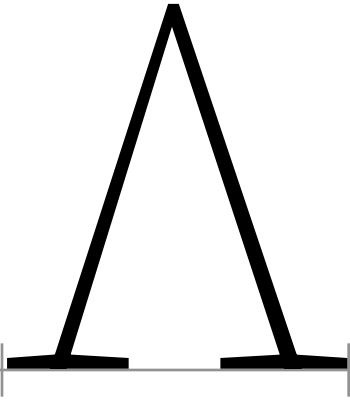
1

A thick, black outline of the uppercase letter 'K'. It features a vertical stem on the left, a horizontal top bar, and two diagonal strokes forming the right side. The letter is positioned on a horizontal baseline with vertical tick marks at the start and end of its bounding box.

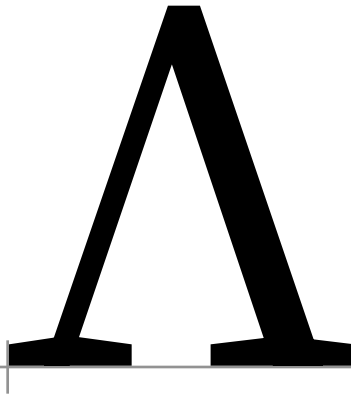
2

A thin, black outline of the italicized uppercase letter 'K'. The letter is slanted to the right. It features a vertical stem on the left, a horizontal top bar, and two diagonal strokes forming the right side. The letter is positioned on a horizontal baseline with vertical tick marks at the start and end of its bounding box.A medium-weight, black outline of the italicized uppercase letter 'K'. The letter is slanted to the right. It features a vertical stem on the left, a horizontal top bar, and two diagonal strokes forming the right side. The letter is positioned on a horizontal baseline with vertical tick marks at the start and end of its bounding box.A thick, black outline of the italicized uppercase letter 'K'. The letter is slanted to the right. It features a vertical stem on the left, a horizontal top bar, and two diagonal strokes forming the right side. The letter is positioned on a horizontal baseline with vertical tick marks at the start and end of its bounding box.

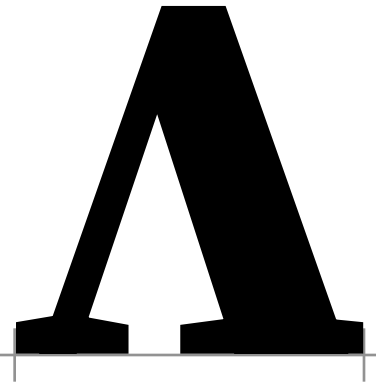
Lambda |  $\Lambda$  | U+039B



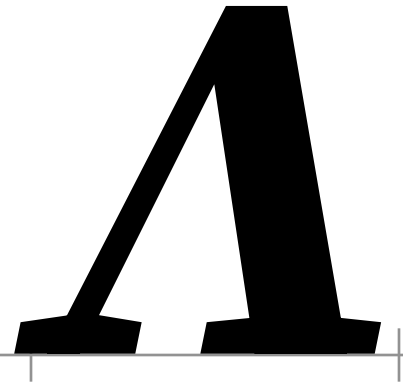
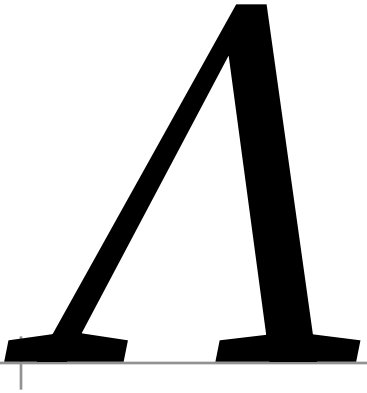
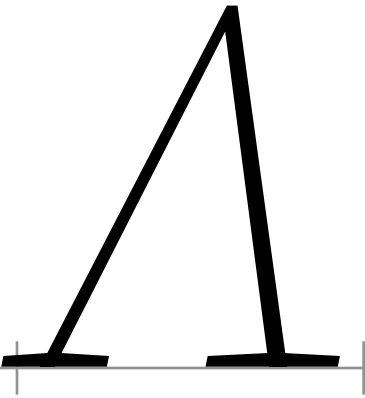
0



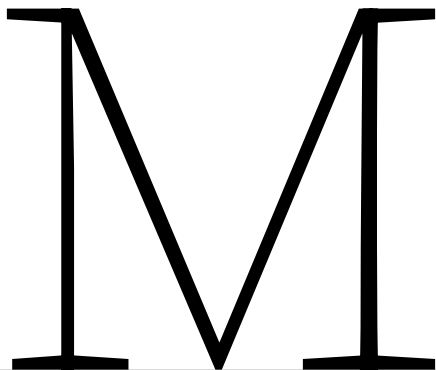
1



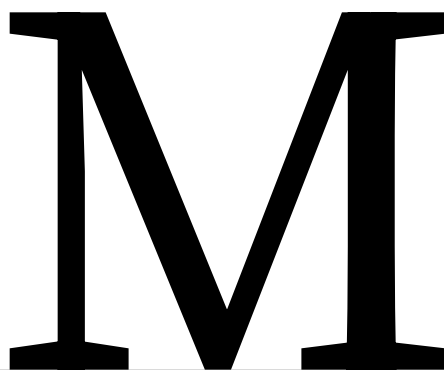
2



Mu | M | U+039C



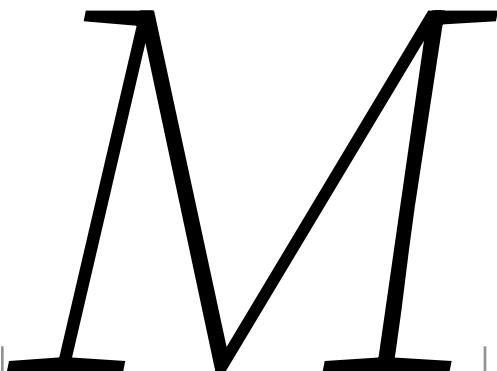
0



1



2



0

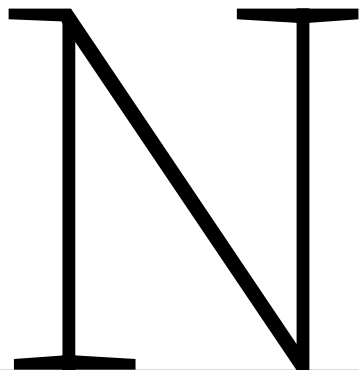


1

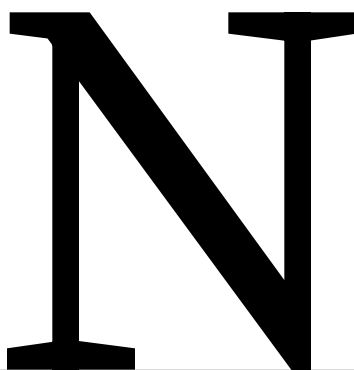


2

Nu | N | U+039D



0



1



2



0

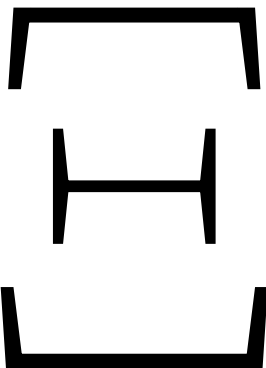


1

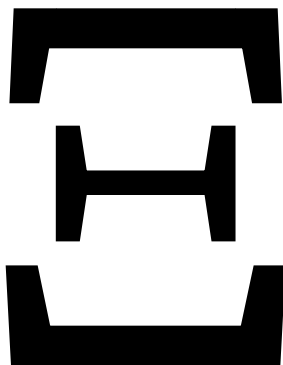


2

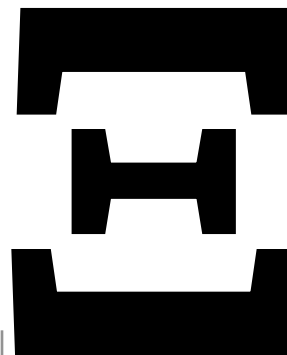
Xi | ≡ | U+039E



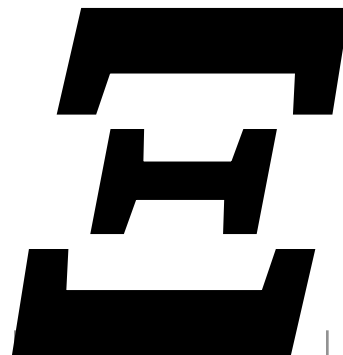
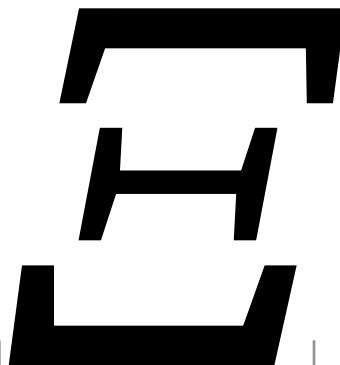
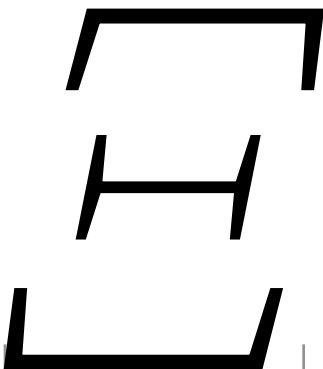
0



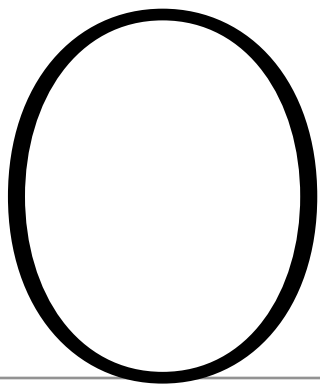
1



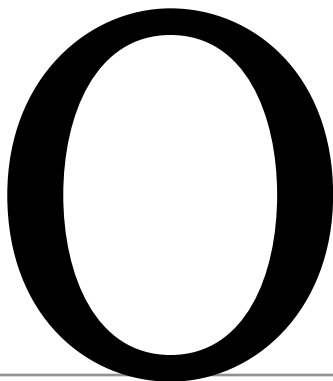
2



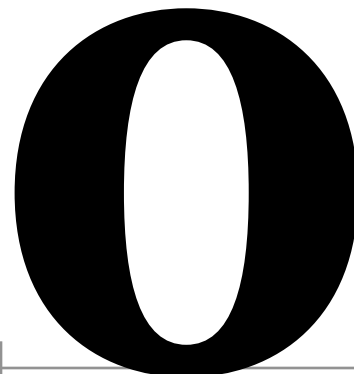
Omicron | 0 | U+039F



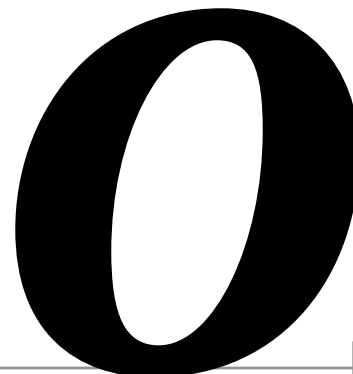
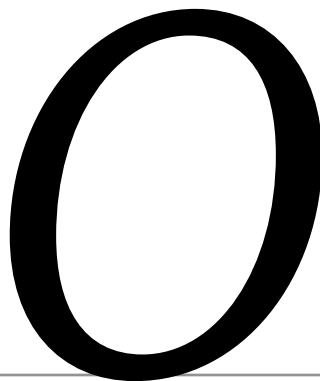
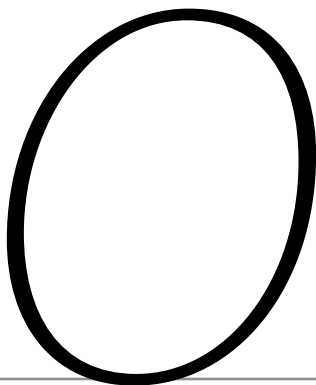
0



1

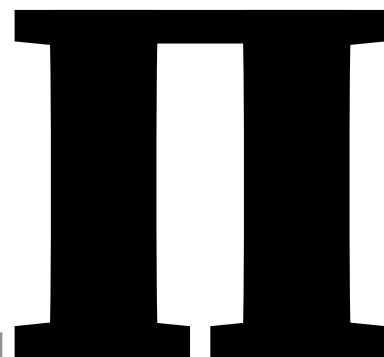
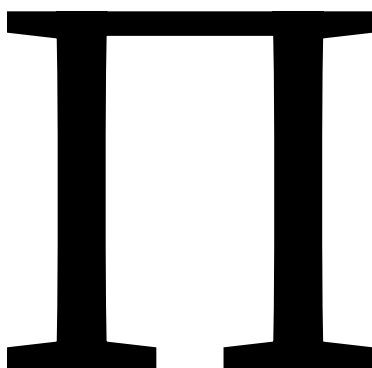
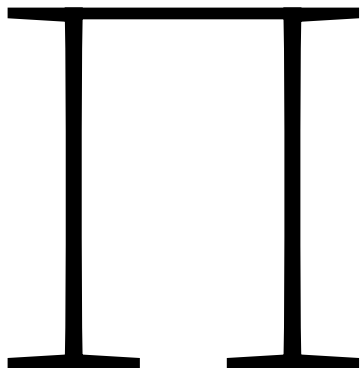


2





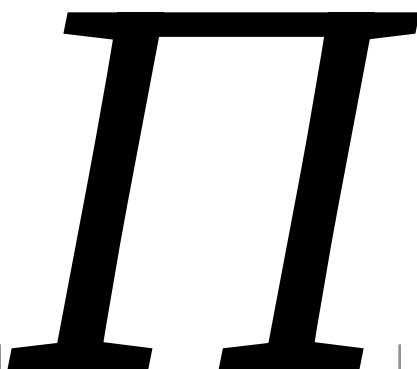
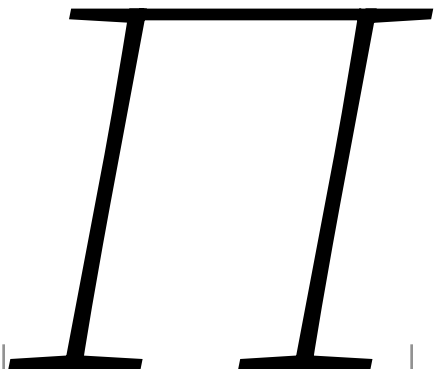
Π | Π | U+03A0



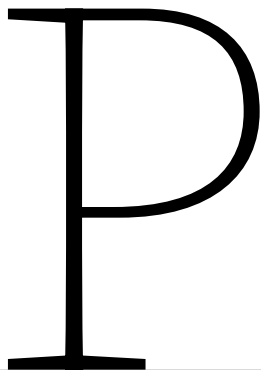
0

1

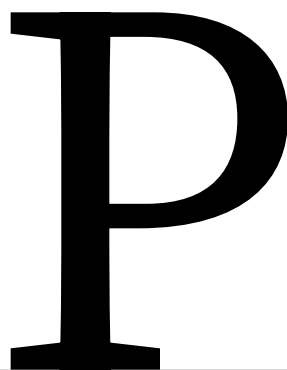
2



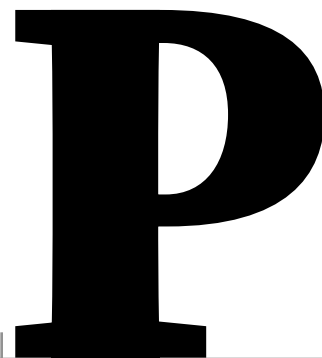
Rho | P | U+03A1



P



P

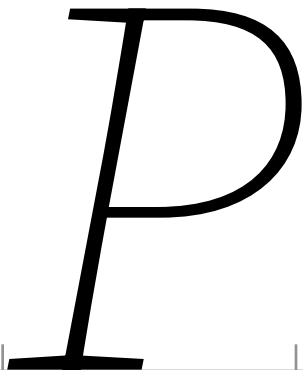


P

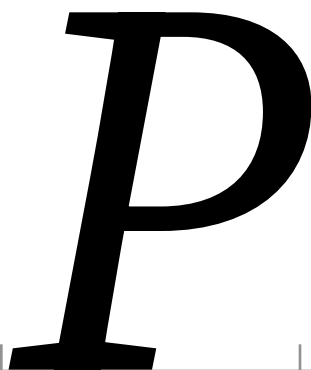
0

1

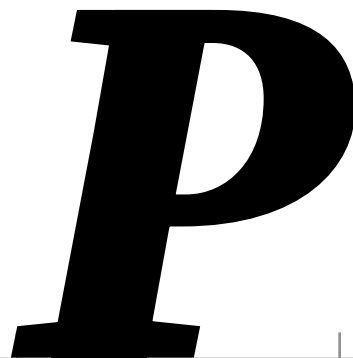
2



P

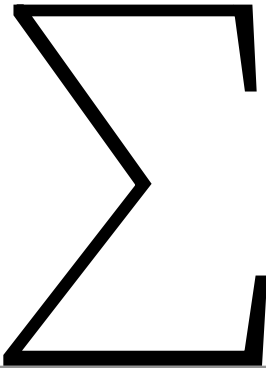


P

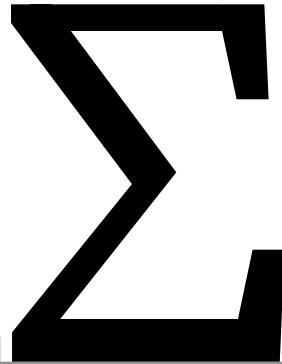


P

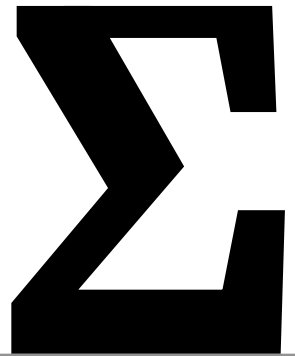
Sigma | Σ | U+03A3



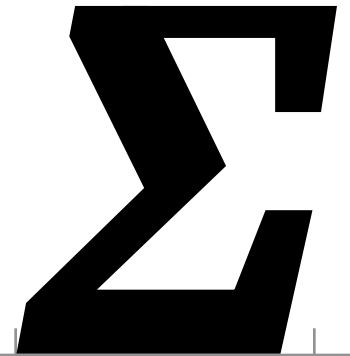
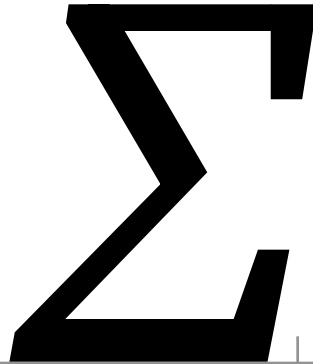
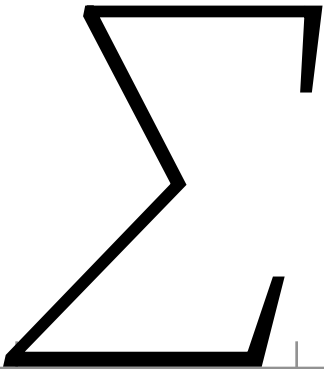
0



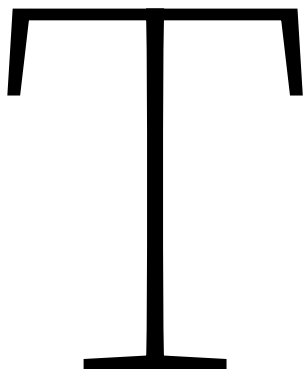
1



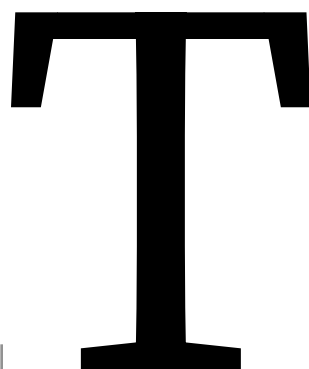
2



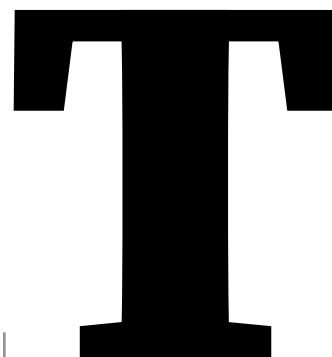
Tau | T | U+03A4



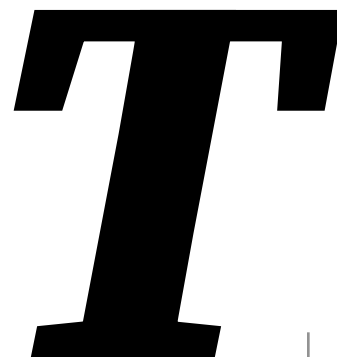
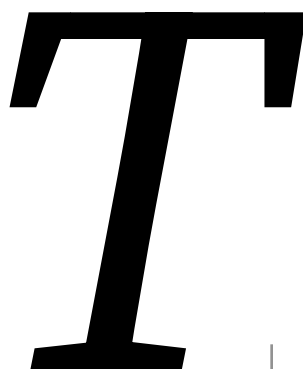
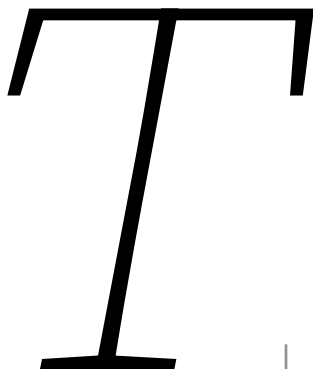
0



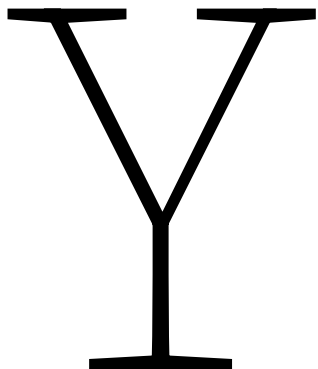
1



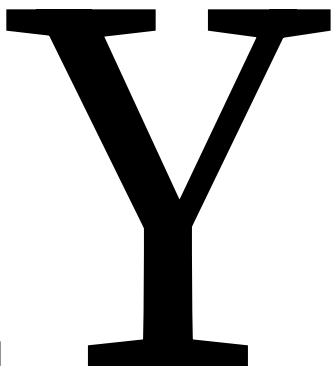
2



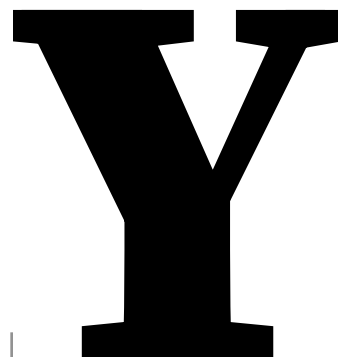
Upsilon | Y | U+03A5



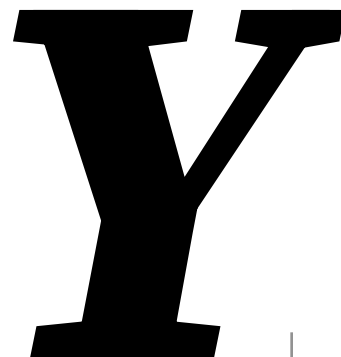
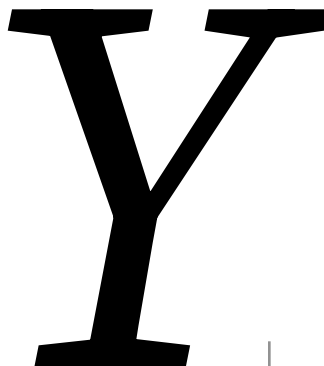
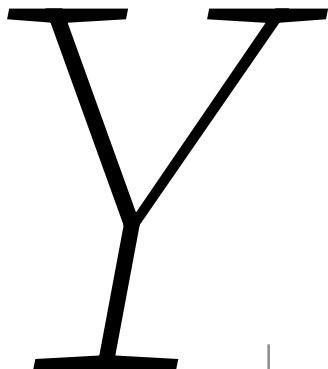
0



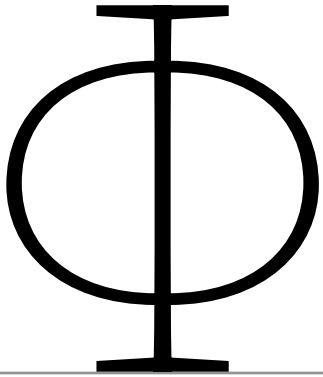
1



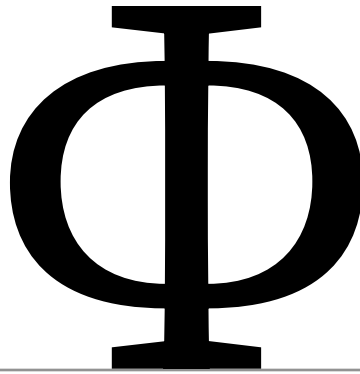
2



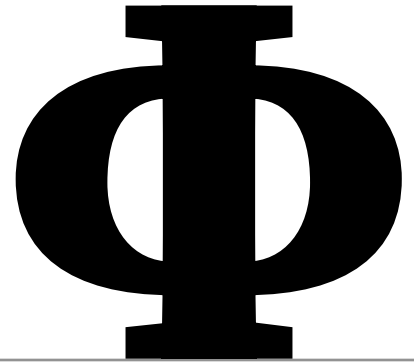
Phi |  $\Phi$  | U+03A6



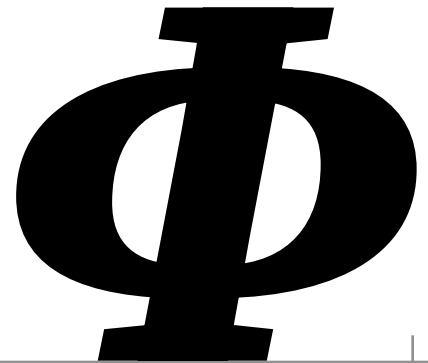
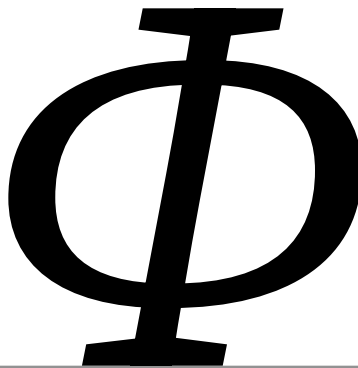
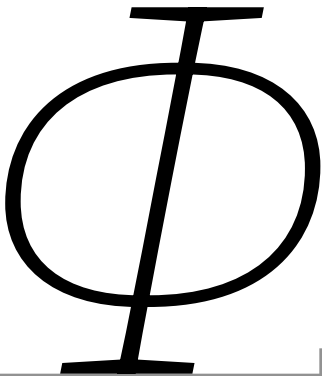
0



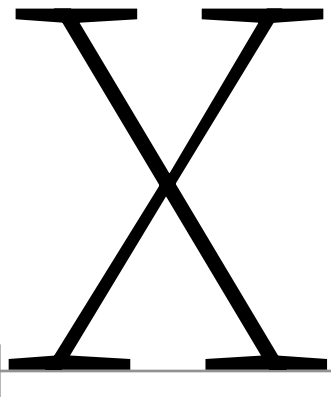
1



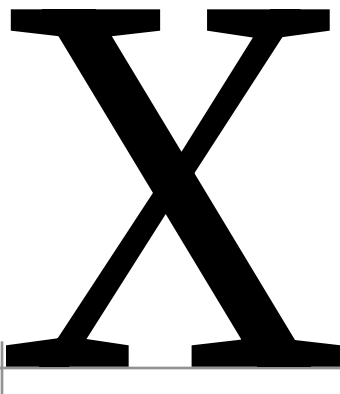
2



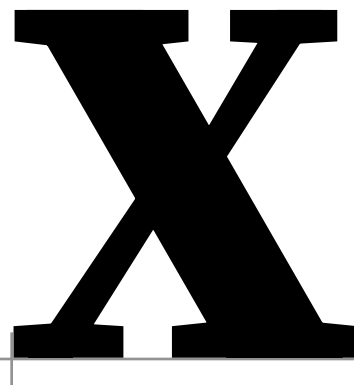
Chi | X | U+03A7



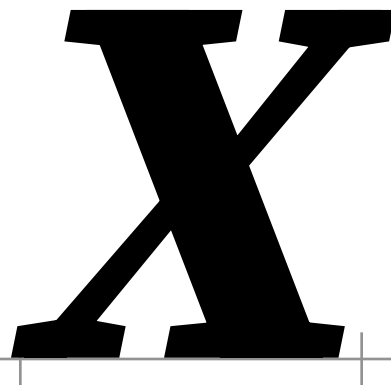
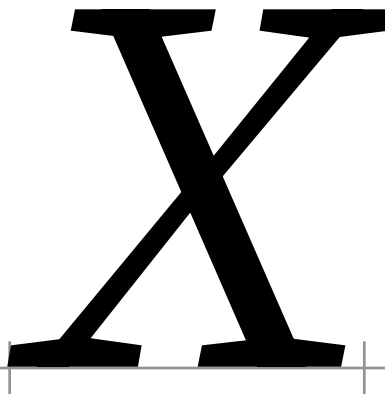
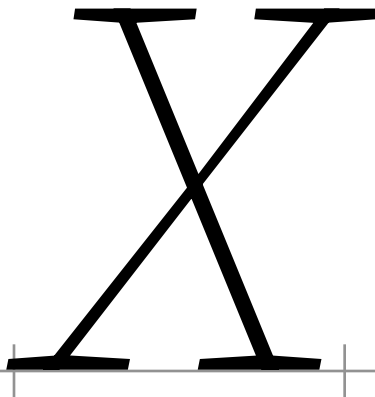
0



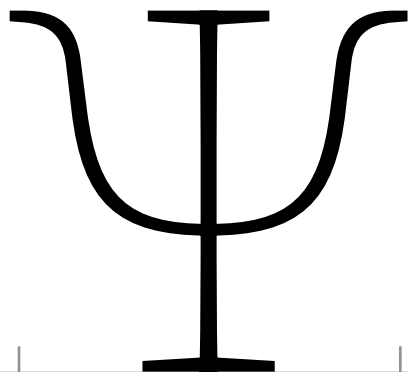
1



2

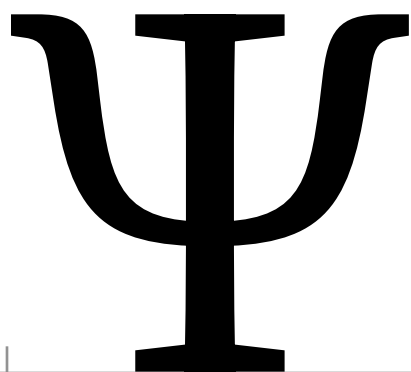


Psi | Ψ | U+03A8



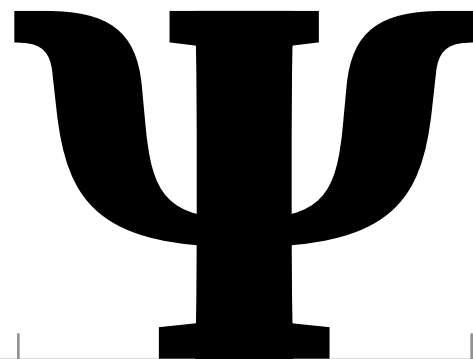
Ψ

0



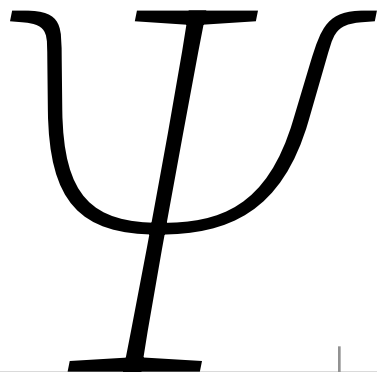
Ψ

1

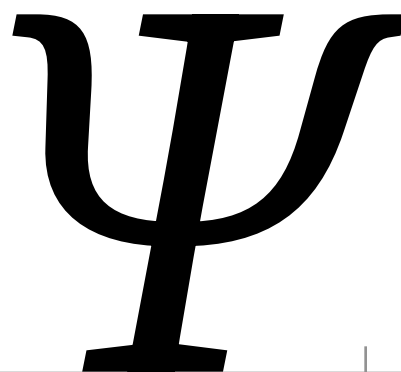


Ψ

2



Ψ



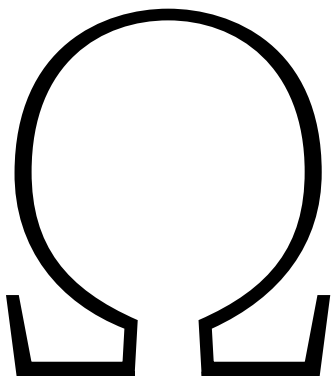
Ψ



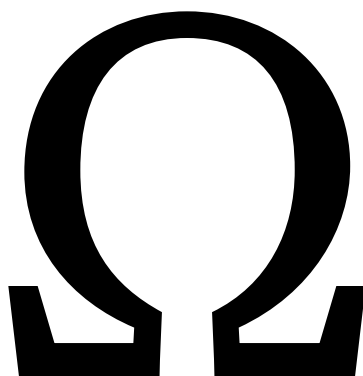
Ψ



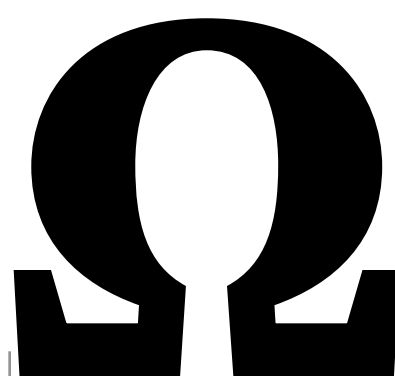
Omega | Ω | U+03A9



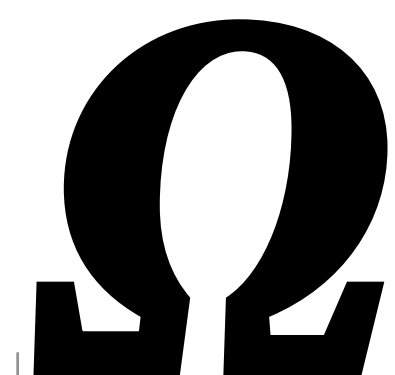
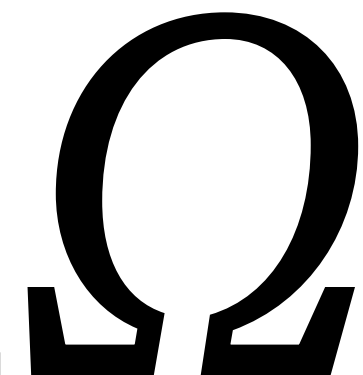
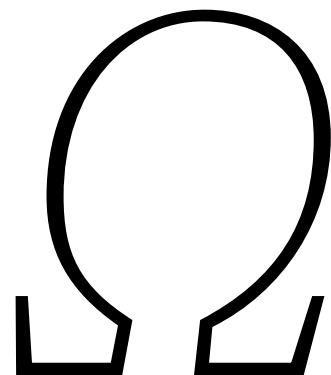
0



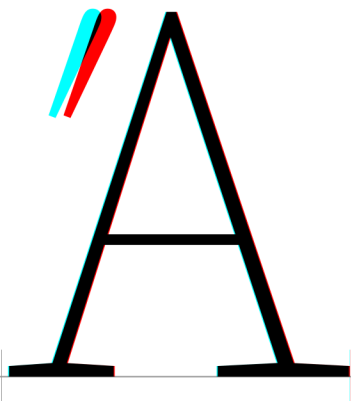
1



2



Alphatonos | Ā | U+0386



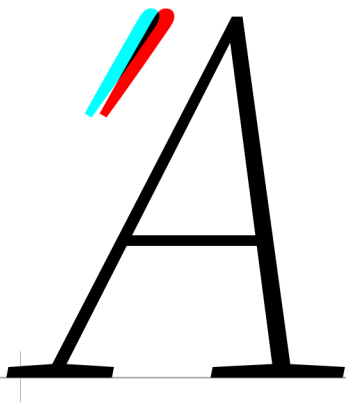
0



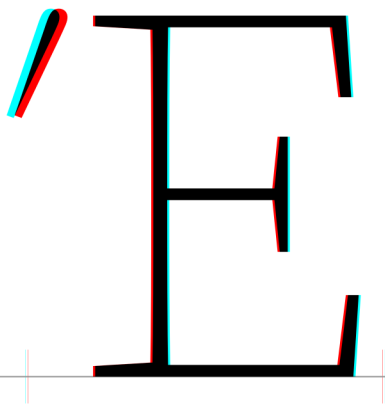
1



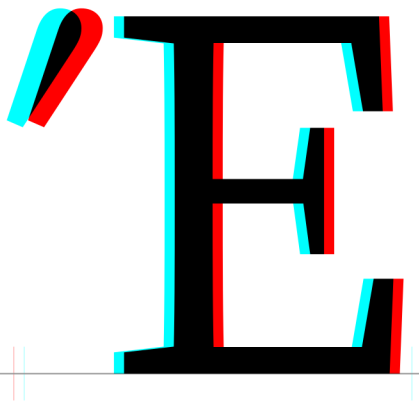
2



Epsilontonos | Ę | U+0388



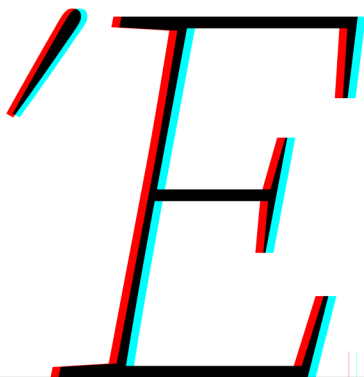
0



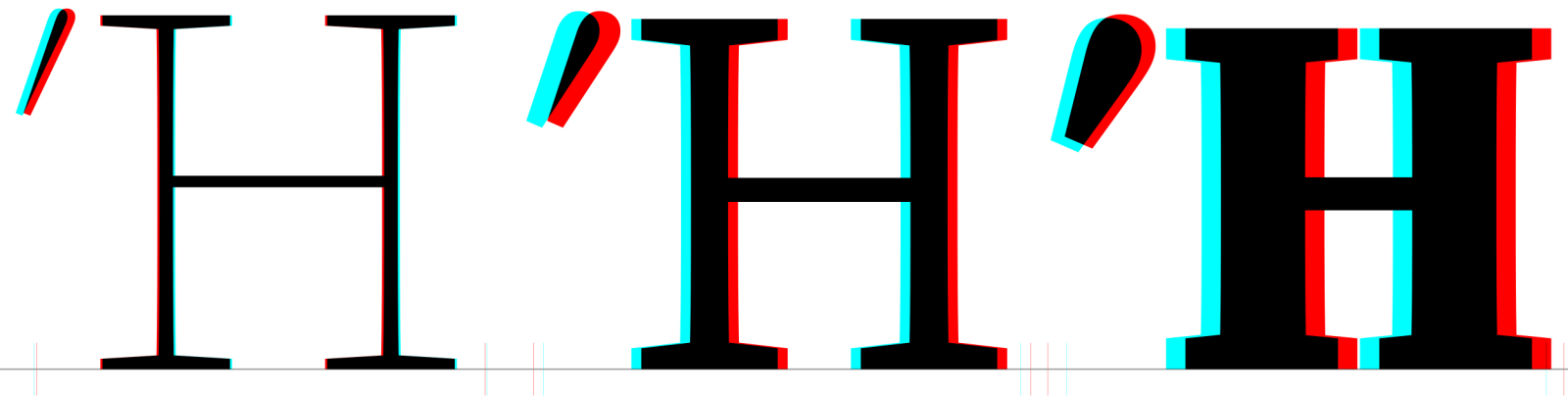
1



2



Etatonos | Ħ | U+0389



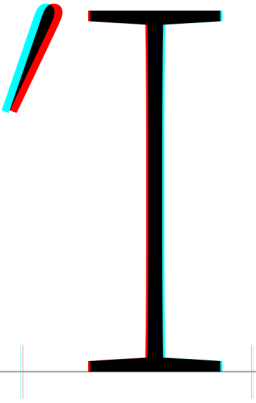
0

1

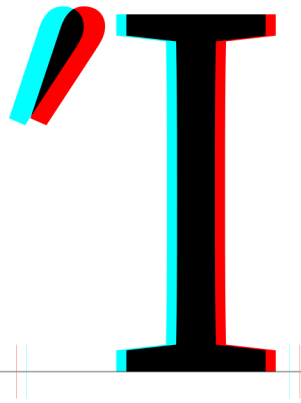
2



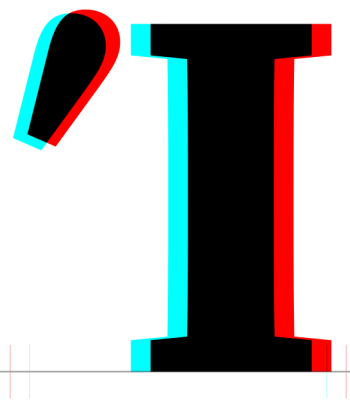
Iotatonos | Í | U+038A



0



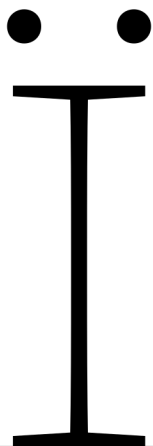
1



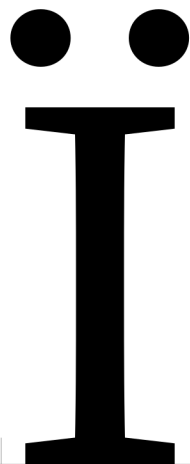
2



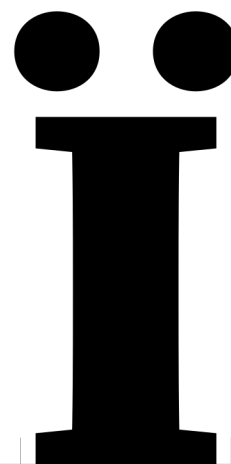
Iotadieresis | ï | U+03AA



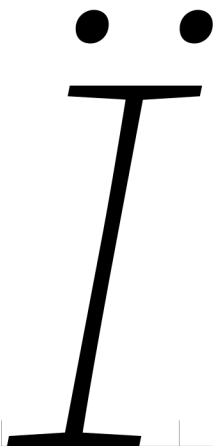
0



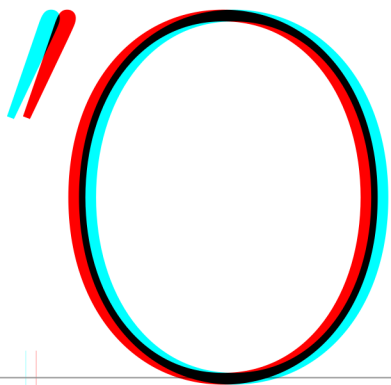
1



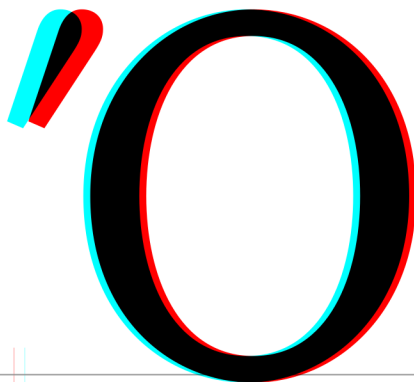
2



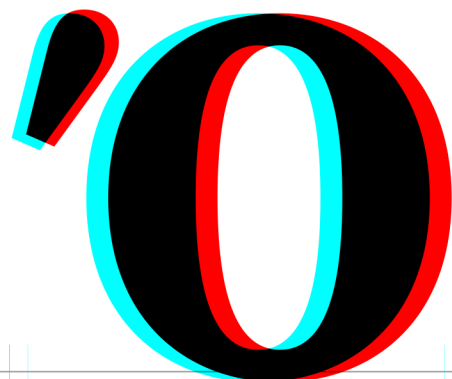
Omicrontonos | 0̇ | U+038C



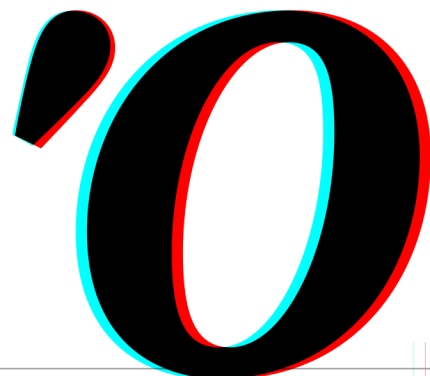
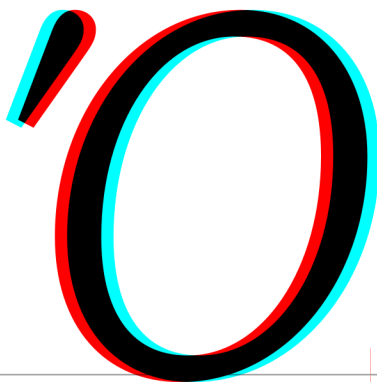
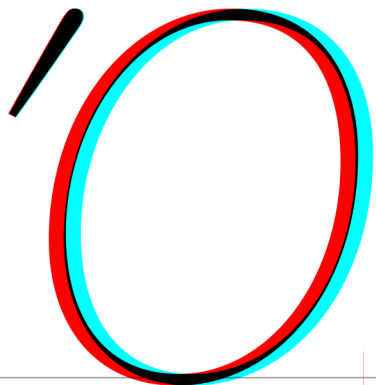
0



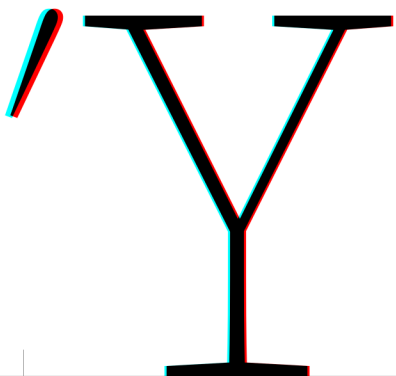
1



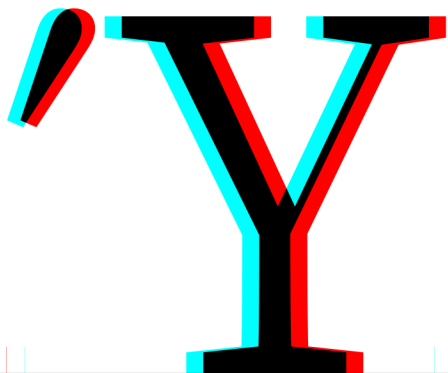
2



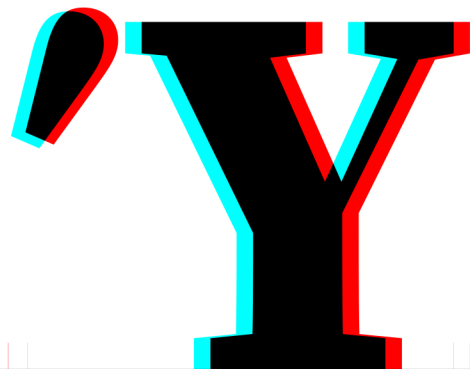
Upsilontonos | Υ | U+038E



0



1

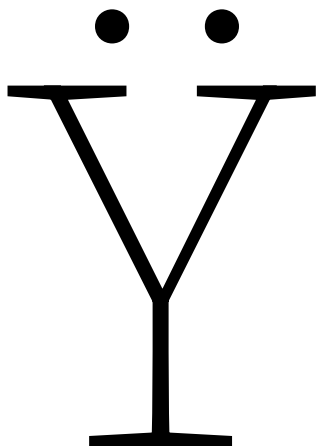


2

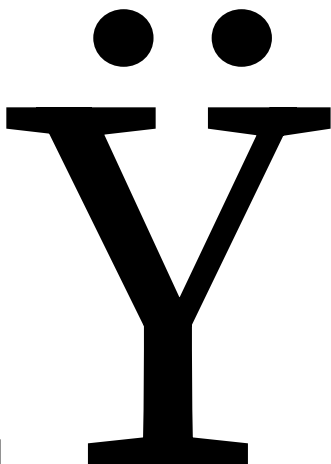




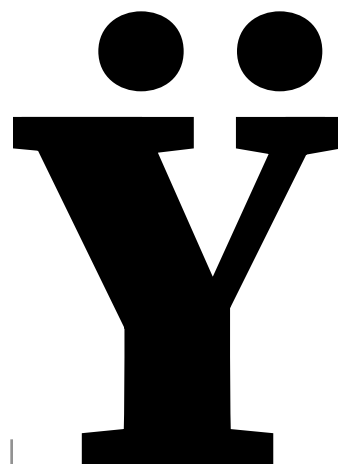
Upsilondieresis | Ÿ | U+03AB



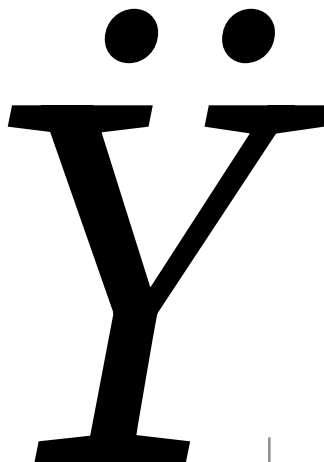
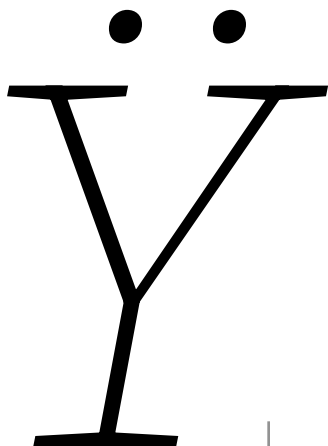
0



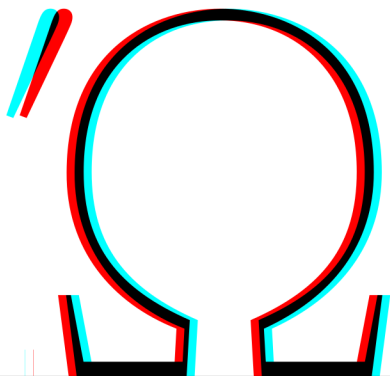
1



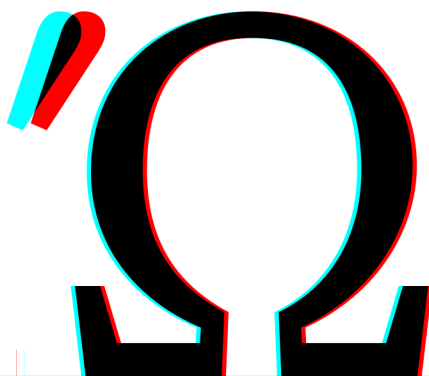
2



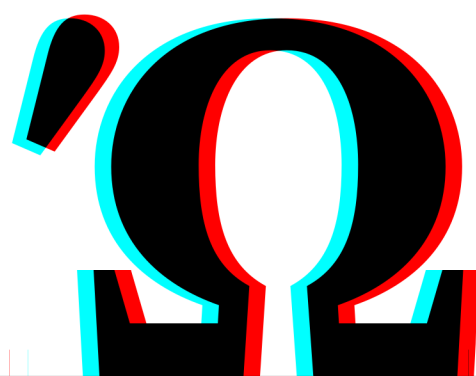
Omegatonos | Ω | U+038F



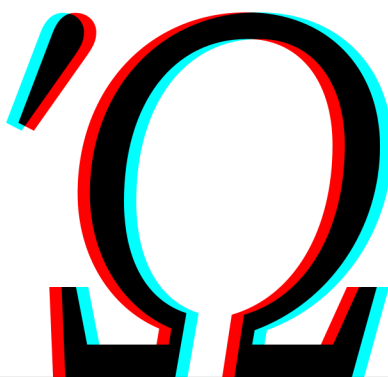
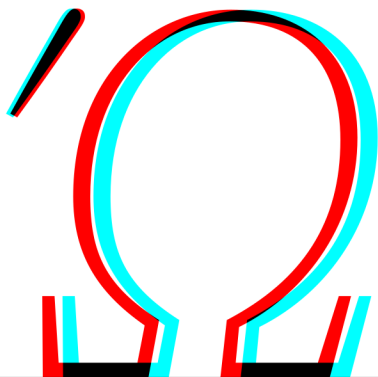
0



1



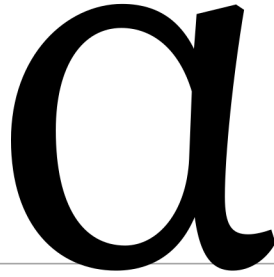
2



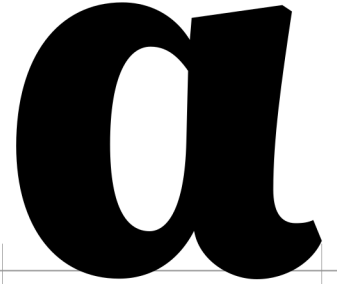
alpha | α | U+03B1

A thin, elegant script version of the Greek letter alpha, featuring a large loop and a delicate tail.

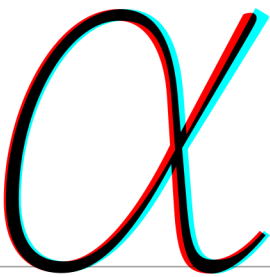

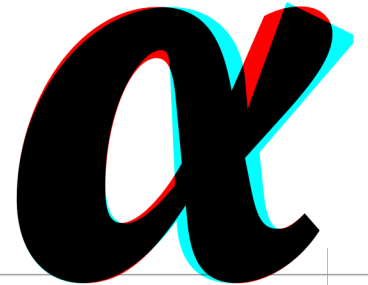
0

A medium-weight script version of the Greek letter alpha, with a slightly thicker stroke and a more pronounced tail.

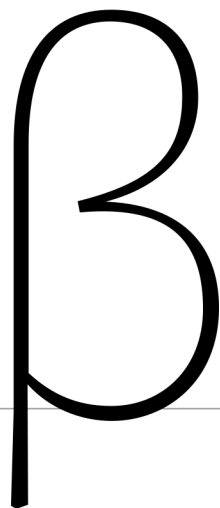
1

A thick, bold script version of the Greek letter alpha, with a very heavy stroke and a short, blunt tail.

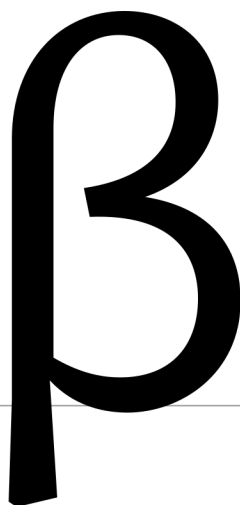
2

A thin script alpha with a red shadow offset to the right and a cyan shadow offset to the left, creating a 3D effect.A medium script alpha with a red shadow offset to the right and a cyan shadow offset to the left, creating a 3D effect.A thick script alpha with a red shadow offset to the right and a cyan shadow offset to the left, creating a 3D effect.

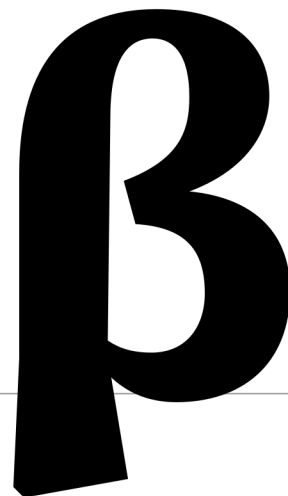
beta | β | U+03B2



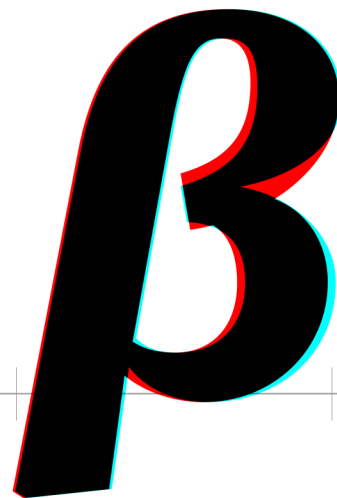
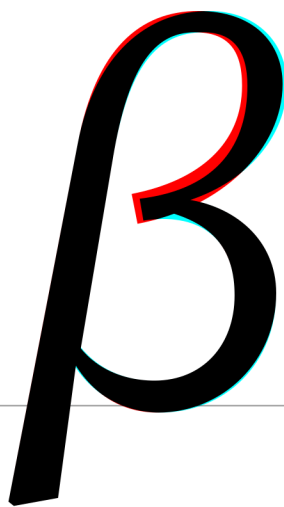
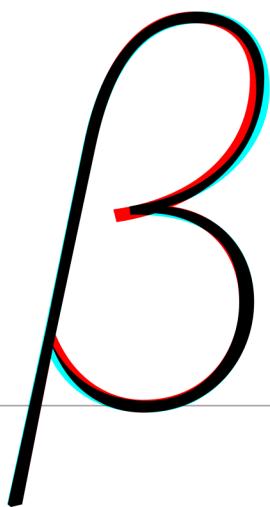
0



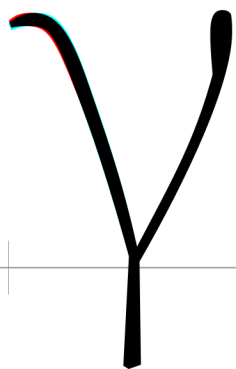
1



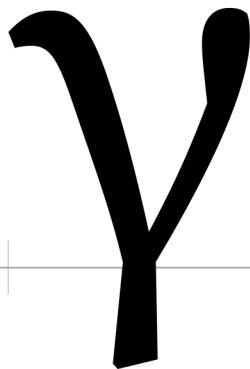
2



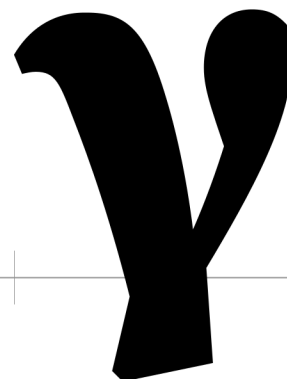
gamma | γ | U+03B3



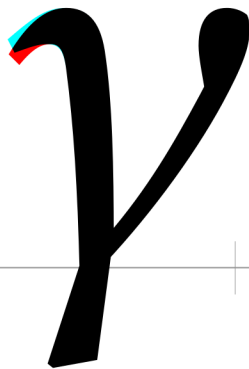
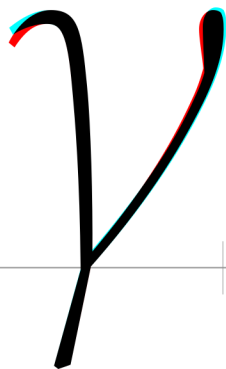
0



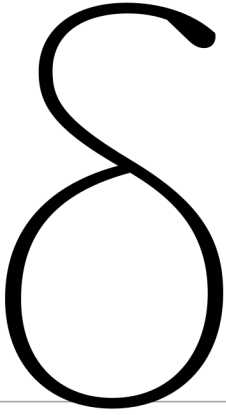
1



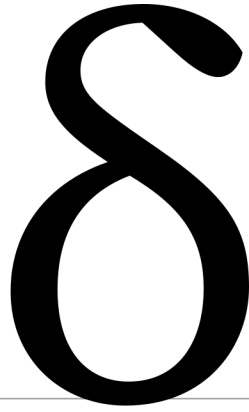
2



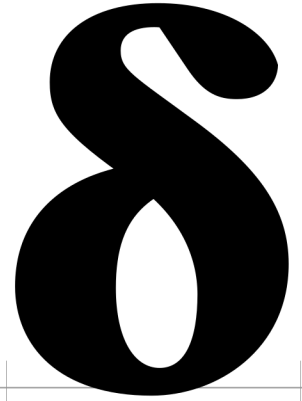
delta | δ | U+03B4



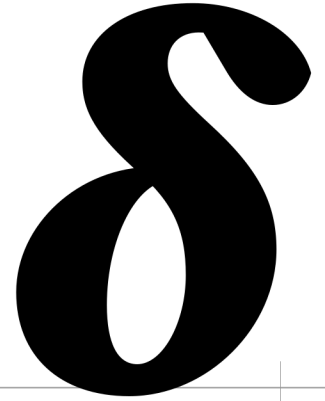
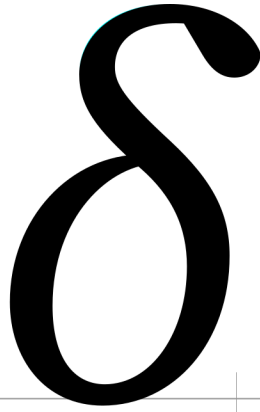
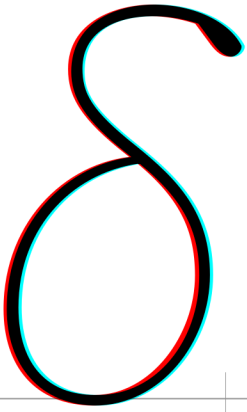
0



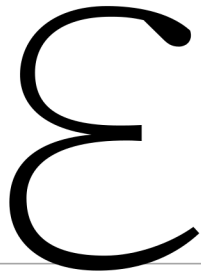
1



2



epsilon | ε | U+03B5



A thin, black, cursive-style epsilon character (ε) positioned above a horizontal baseline. The character has a light, elegant appearance with a slight curve at the top and a hook at the bottom.

0



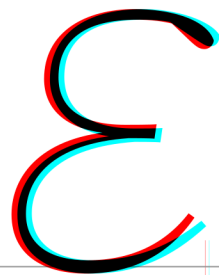
A medium-weight, black, cursive-style epsilon character (ε) positioned above a horizontal baseline. The character is slightly thicker than the first one, with a more pronounced curve and hook.

1



A thick, black, cursive-style epsilon character (ε) positioned above a horizontal baseline. The character is bold and has a very pronounced, rounded curve and a thick hook.

2



A thin, black, cursive-style epsilon character (ε) positioned above a horizontal baseline. The character is outlined with a red line on the left and a cyan line on the right, creating a 3D effect.

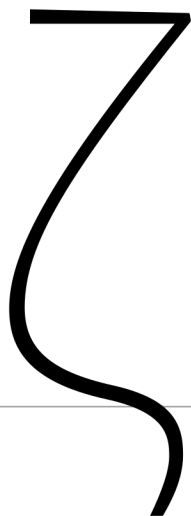


A medium-weight, black, cursive-style epsilon character (ε) positioned above a horizontal baseline. The character is outlined with a red line on the left and a cyan line on the right, creating a 3D effect.

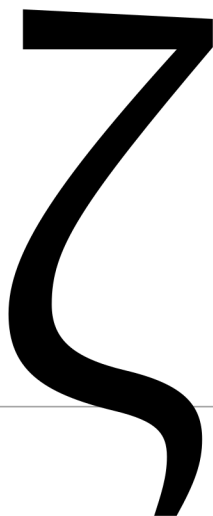


A thick, black, cursive-style epsilon character (ε) positioned above a horizontal baseline. The character is outlined with a red line on the left and a cyan line on the right, creating a 3D effect.

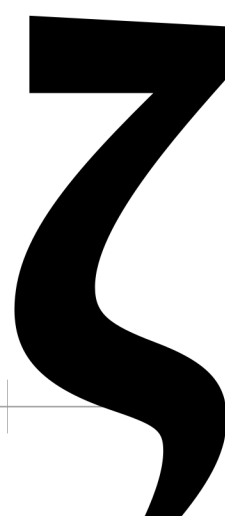
zeta | ζ | U+03B6



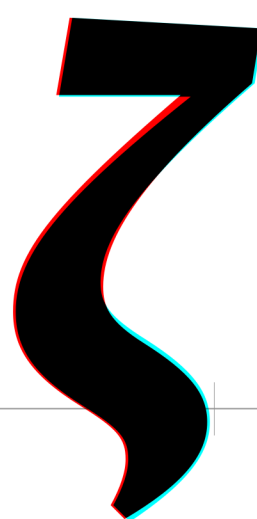
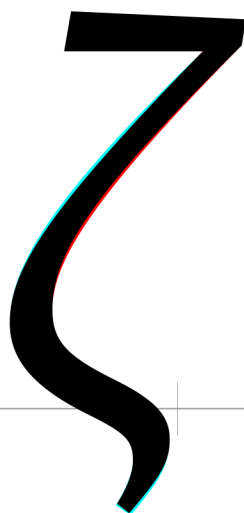
0



1

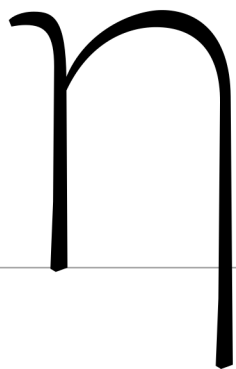


2

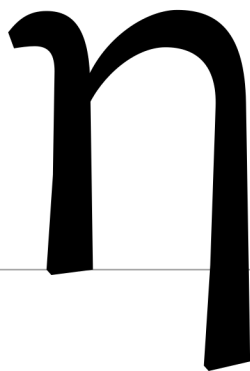




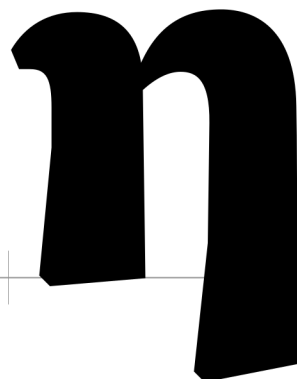
eta | η | U+03B7

A thin, black, cursive lowercase letter 'eta' (η) is shown. It has a small loop at the top left and a long, thin tail extending downwards.

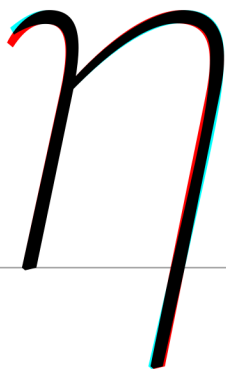
0

A medium-weight, black, cursive lowercase letter 'eta' (η) is shown. It has a small loop at the top left and a thick tail extending downwards.

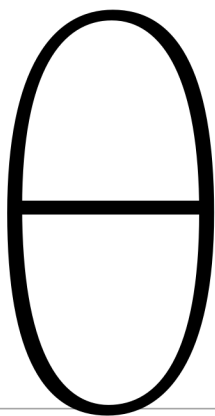
1

A thick, black, cursive lowercase letter 'eta' (η) is shown. It has a small loop at the top left and a very thick tail extending downwards.

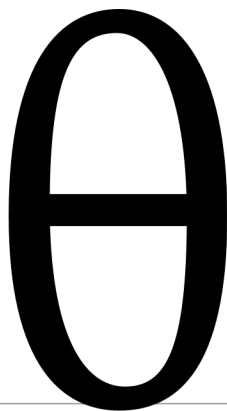
2

A thin, black, cursive lowercase letter 'eta' (η) is shown, tilted to the right. It has a red outline on the left side and a blue outline on the right side.A medium-weight, black, cursive lowercase letter 'eta' (η) is shown, tilted to the right. It has a red outline on the left side and a blue outline on the right side.A thick, black, cursive lowercase letter 'eta' (η) is shown, tilted to the right. It has a red outline on the left side and a blue outline on the right side.

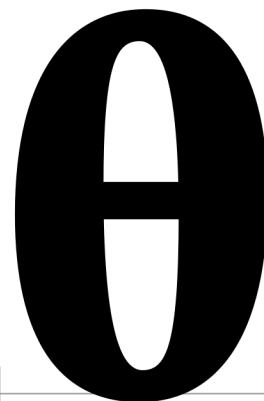
theta | θ | U+03B8



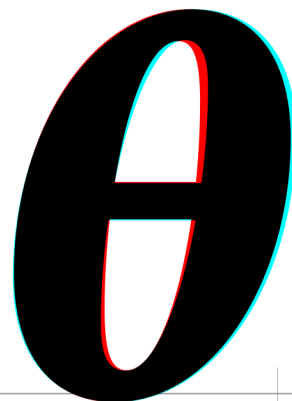
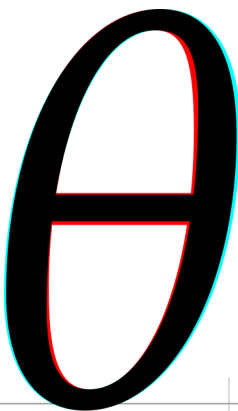
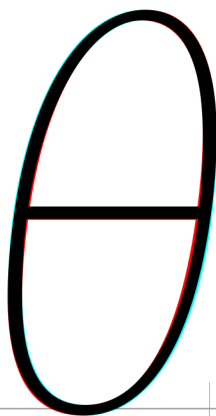
0



1



2



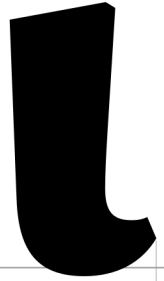
iota | ɿ | U+03B9



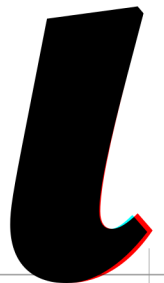
0



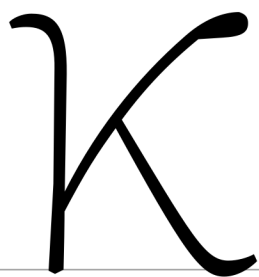
1



2

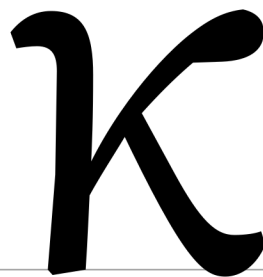


kappa | κ | U+03BA



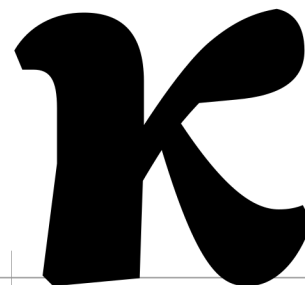
A thin black outline of the Greek letter kappa (κ) is shown on a horizontal baseline. The letter has a vertical stem on the left, a diagonal stroke from the top left to the middle, and a curved stroke from the middle to the bottom right.

0



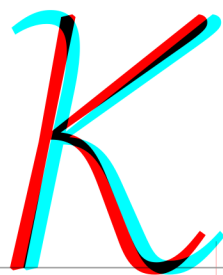
A medium-weight black outline of the Greek letter kappa (κ) is shown on a horizontal baseline. The letter has a vertical stem on the left, a diagonal stroke from the top left to the middle, and a curved stroke from the middle to the bottom right.

1

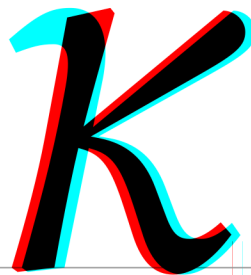


A thick black outline of the Greek letter kappa (κ) is shown on a horizontal baseline. The letter has a vertical stem on the left, a diagonal stroke from the top left to the middle, and a curved stroke from the middle to the bottom right.

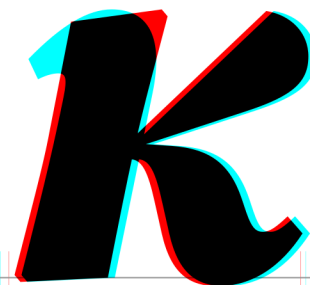
2



A thin black outline of the Greek letter kappa (κ) is shown on a horizontal baseline. The letter has a vertical stem on the left, a diagonal stroke from the top left to the middle, and a curved stroke from the middle to the bottom right. Red and cyan shadows are cast to the right of the letter.

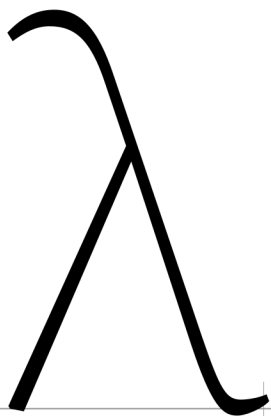


A medium-weight black outline of the Greek letter kappa (κ) is shown on a horizontal baseline. The letter has a vertical stem on the left, a diagonal stroke from the top left to the middle, and a curved stroke from the middle to the bottom right. Red and cyan shadows are cast to the right of the letter.

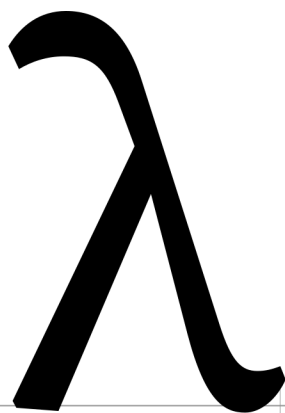


A thick black outline of the Greek letter kappa (κ) is shown on a horizontal baseline. The letter has a vertical stem on the left, a diagonal stroke from the top left to the middle, and a curved stroke from the middle to the bottom right. Red and cyan shadows are cast to the right of the letter.

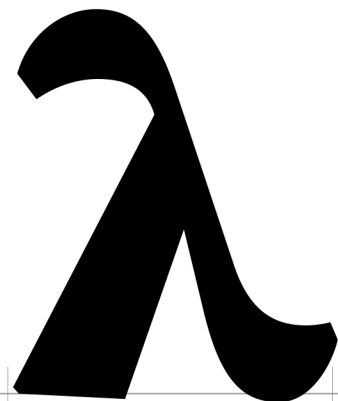
lambda | λ | U+03BB



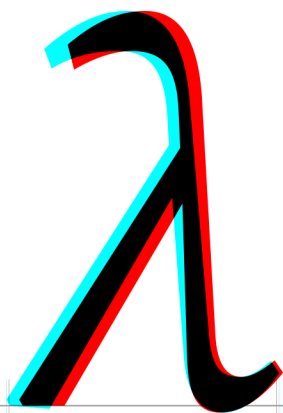
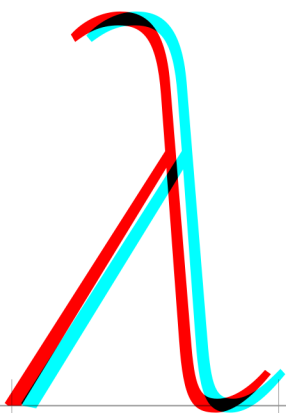
0



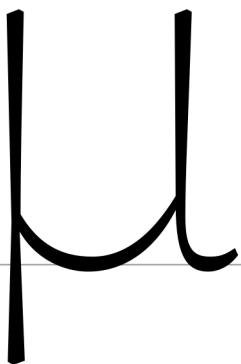
1



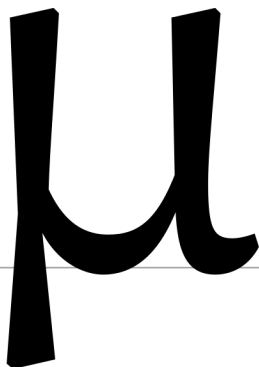
2



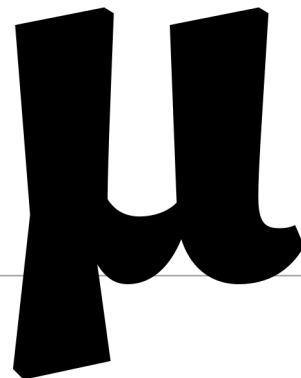
mu | μ | U+03BC



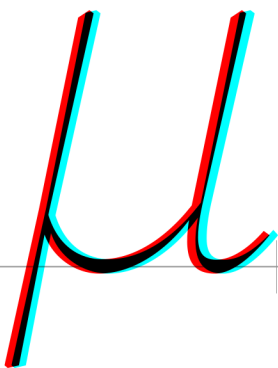
0



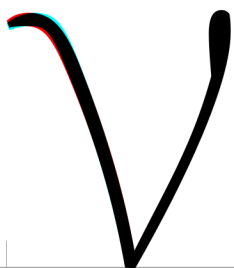
1



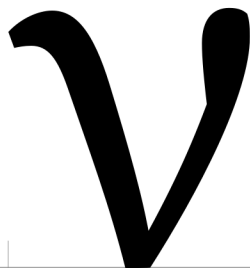
2



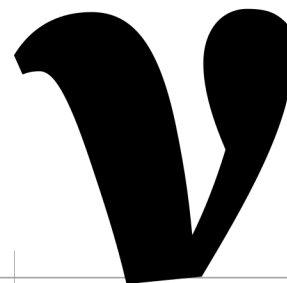
nu | v | U+03BD



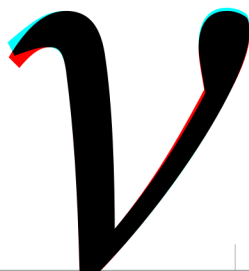
0



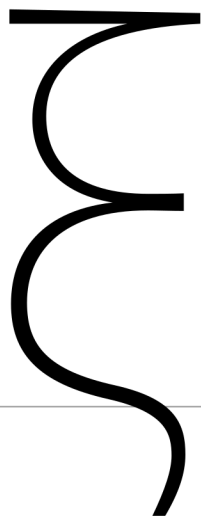
1



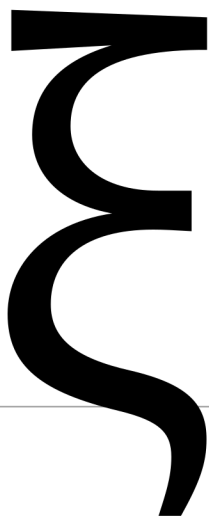
2



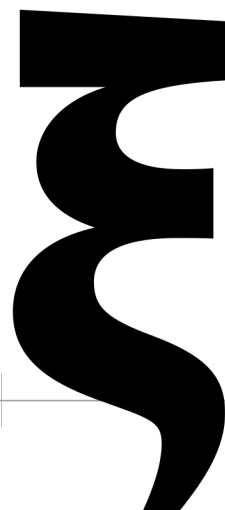
xi | ξ | U+03BE



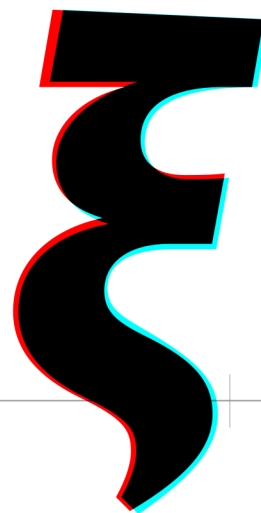
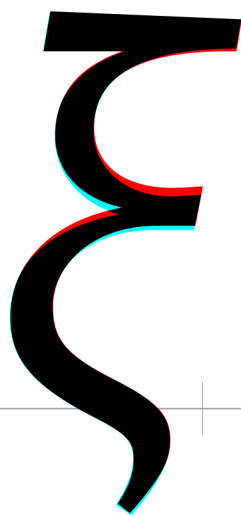
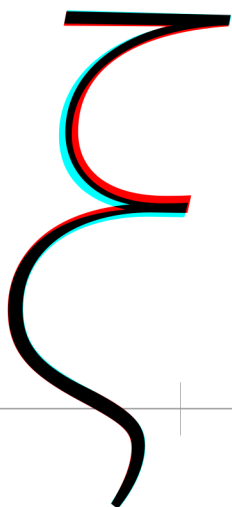
0



1

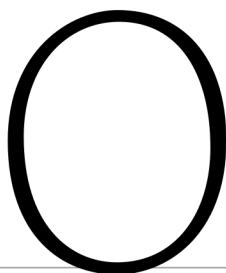


2

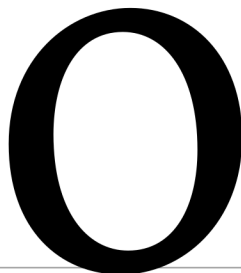




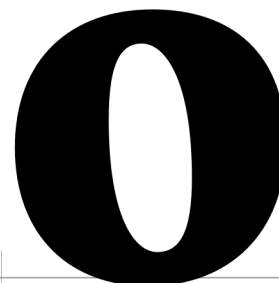
omicron | o | U+03BF



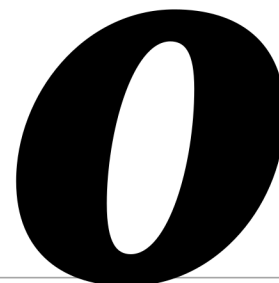
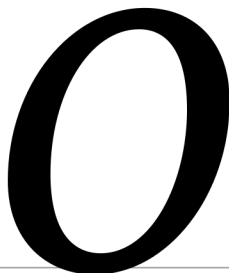
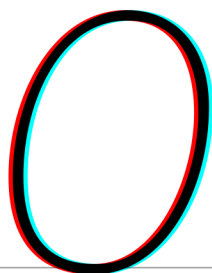
0



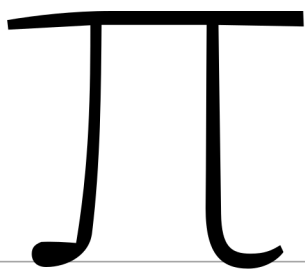
1



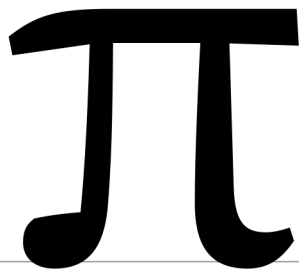
2



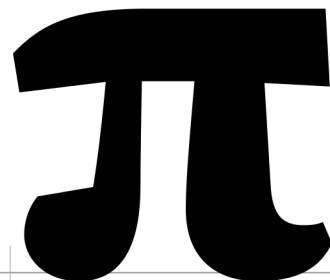
pi | π | U+03C0

A thin, black pi symbol (π) with a horizontal top bar and two vertical stems that curve slightly at the bottom.

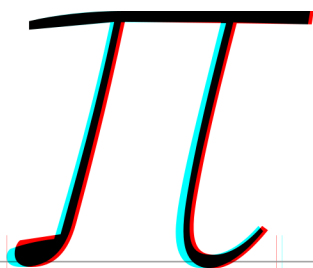
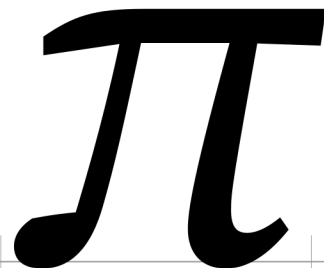
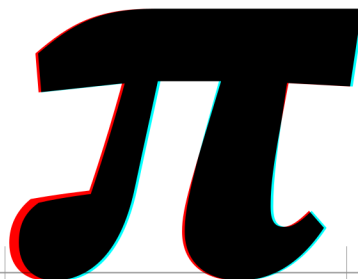
0

A medium-weight, black pi symbol (π) with a horizontal top bar and two vertical stems that curve slightly at the bottom.

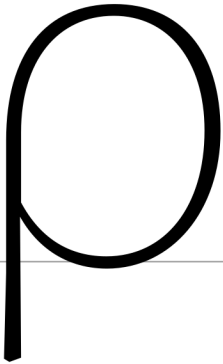
1

A thick, black pi symbol (π) with a horizontal top bar and two vertical stems that curve slightly at the bottom.

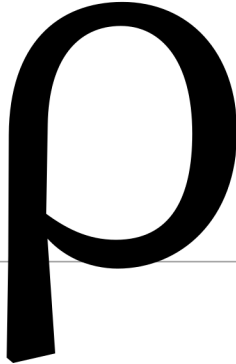
2

A thin, black pi symbol (π) with a horizontal top bar and two vertical stems that curve slightly at the bottom. The symbol is outlined in red and blue.A medium-weight, black pi symbol (π) with a horizontal top bar and two vertical stems that curve slightly at the bottom. The symbol is outlined in red and blue.A thick, black pi symbol (π) with a horizontal top bar and two vertical stems that curve slightly at the bottom. The symbol is outlined in red and blue.

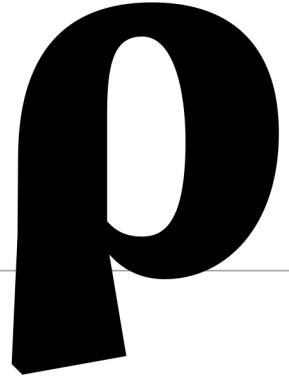
rho | ρ | U+03C1



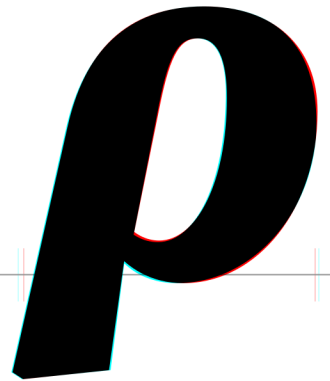
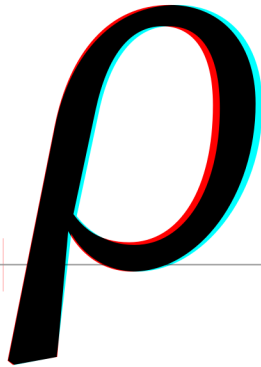
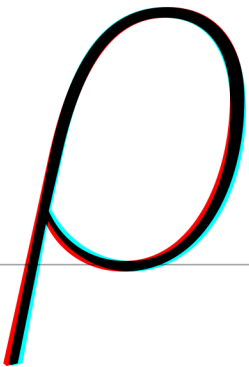
0



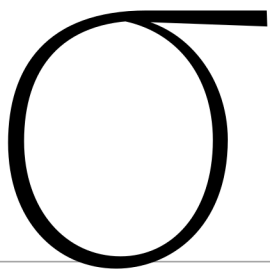
1



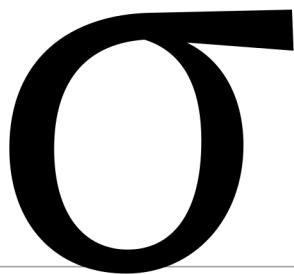
2



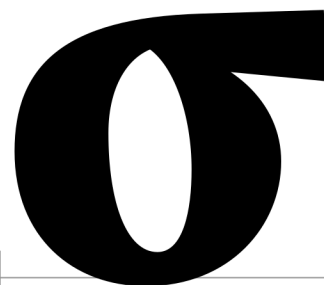
sigma | σ | U+03C3



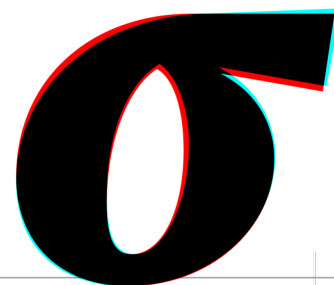
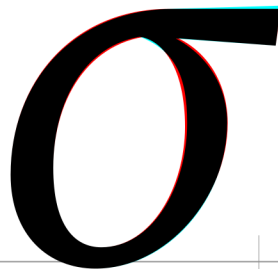
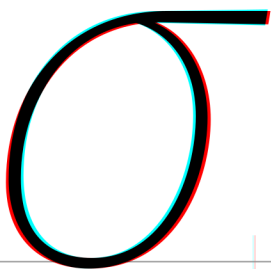
0



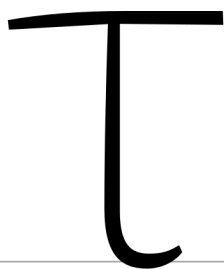
1



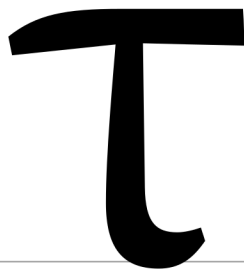
2



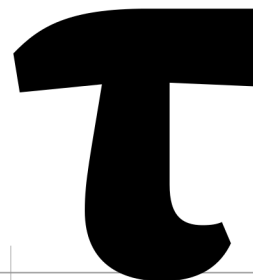
tau | τ | U+03C4

A thin, black, serif uppercase tau character. It has a horizontal top bar and a vertical stem that curves slightly to the right at the bottom. A horizontal baseline is shown below the character with vertical tick marks on either side.

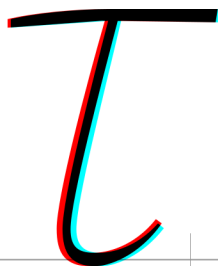
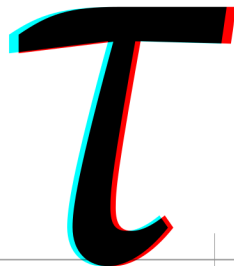
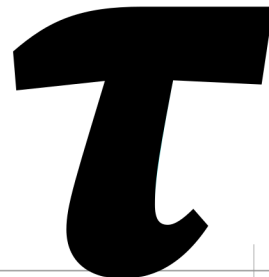
0

A medium-weight, black, serif uppercase tau character. It has a horizontal top bar and a vertical stem that curves slightly to the right at the bottom. A horizontal baseline is shown below the character with vertical tick marks on either side.

1

A thick, black, serif uppercase tau character. It has a horizontal top bar and a vertical stem that curves slightly to the right at the bottom. A horizontal baseline is shown below the character with vertical tick marks on either side.

2

A thin, black, serif uppercase tau character with a red and cyan shadow effect. The shadow is offset to the right and bottom. A horizontal baseline is shown below the character with vertical tick marks on either side.A medium-weight, black, serif uppercase tau character with a red and cyan shadow effect. The shadow is offset to the right and bottom. A horizontal baseline is shown below the character with vertical tick marks on either side.A thick, black, serif uppercase tau character with a red and cyan shadow effect. The shadow is offset to the right and bottom. A horizontal baseline is shown below the character with vertical tick marks on either side.

upsilon | υ | U+03C5

A thin black outline of the Greek letter Upsilon (υ) in a standard serif font. The letter is positioned above a horizontal baseline with vertical tick marks at the start and end of the character's width.

0

A medium-weight black outline of the Greek letter Upsilon (υ) in a standard serif font. The letter is positioned above a horizontal baseline with vertical tick marks at the start and end of the character's width.

1

A thick black outline of the Greek letter Upsilon (υ) in a standard serif font. The letter is positioned above a horizontal baseline with vertical tick marks at the start and end of the character's width.

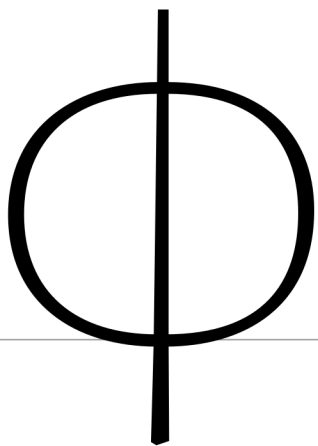
2

A thin black outline of the Greek letter Upsilon (υ) with red and blue shadows, giving it a 3D effect. The letter is positioned above a horizontal baseline with vertical tick marks at the start and end of the character's width.

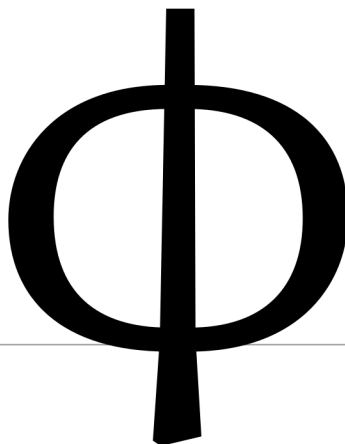
A medium-weight black outline of the Greek letter Upsilon (υ) with red and blue shadows, giving it a 3D effect. The letter is positioned above a horizontal baseline with vertical tick marks at the start and end of the character's width.

A thick black outline of the Greek letter Upsilon (υ) with red and blue shadows, giving it a 3D effect. The letter is positioned above a horizontal baseline with vertical tick marks at the start and end of the character's width.

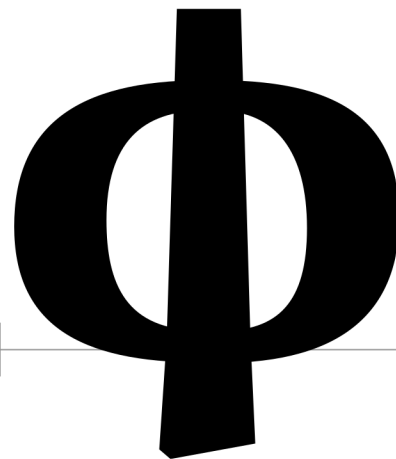
phi | φ | U+03C6



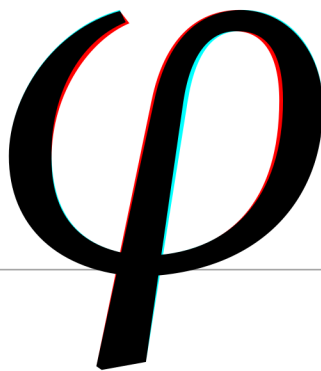
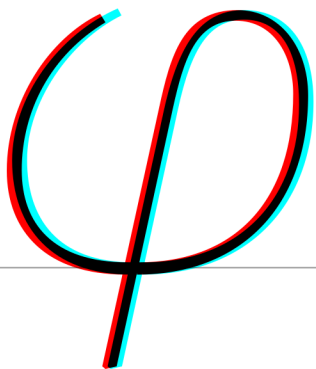
0



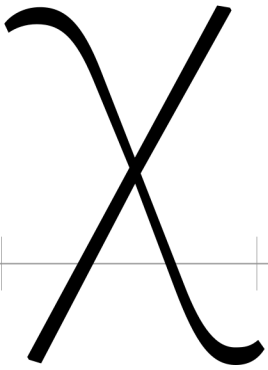
1



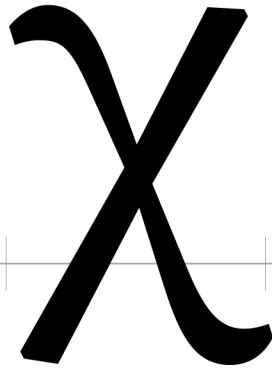
2



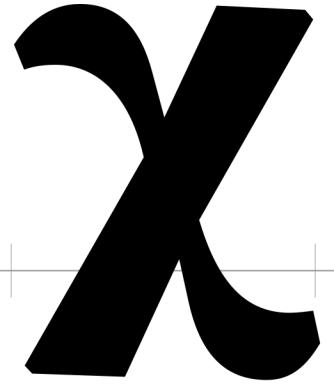
chi | x | U+03C7



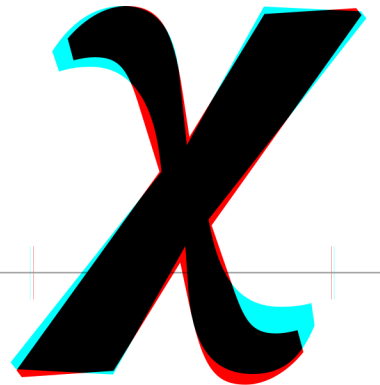
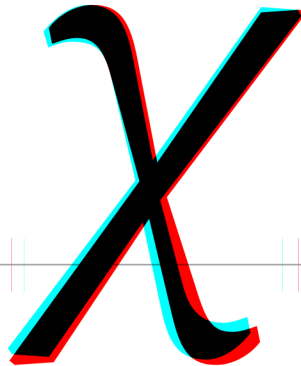
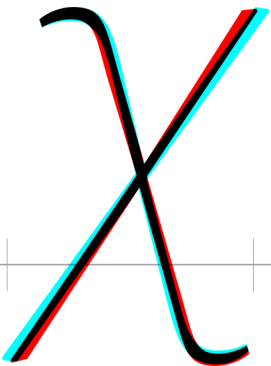
0



1

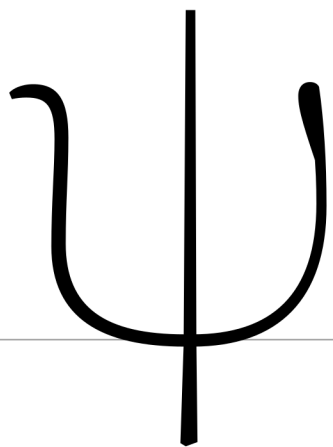


2

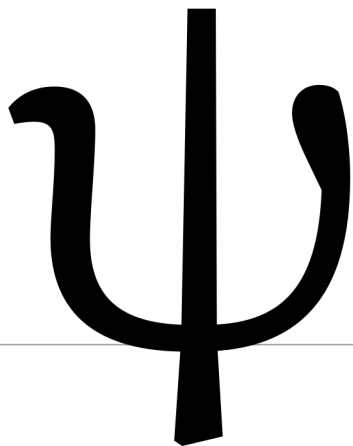




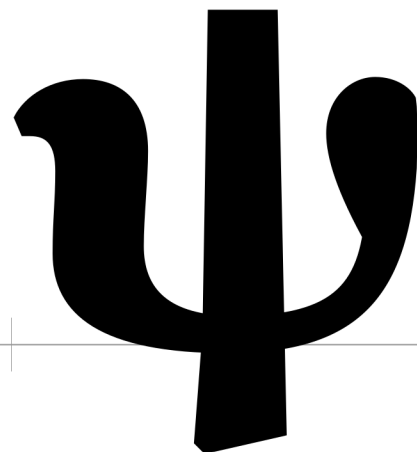
psi | ψ | U+03C8



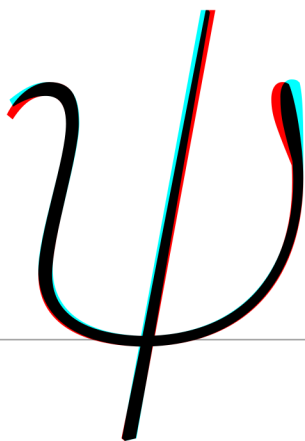
0



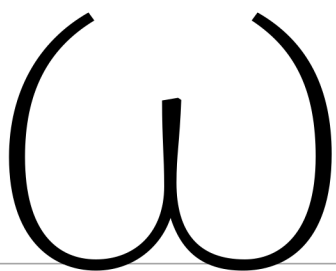
1



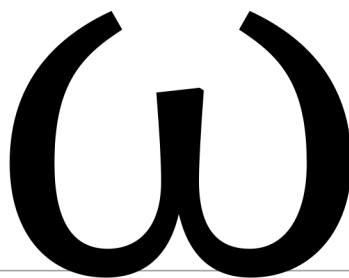
2



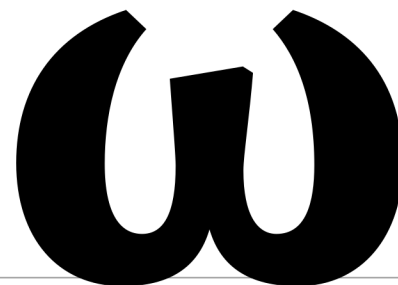
omega | ω | U+03C9

A thin black outline of the Greek letter omega (ω) on a horizontal baseline. The letter is composed of two curved strokes that meet at the bottom.

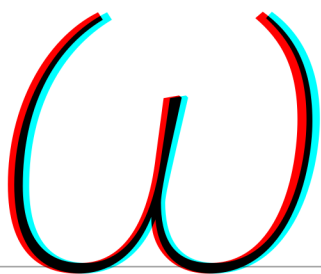

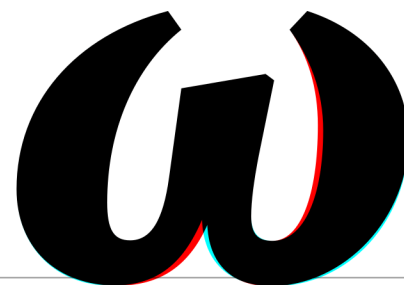
0

A medium-weight black outline of the Greek letter omega (ω) on a horizontal baseline. The letter is composed of two curved strokes that meet at the bottom.

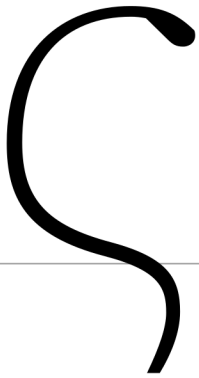
1

A thick black outline of the Greek letter omega (ω) on a horizontal baseline. The letter is composed of two curved strokes that meet at the bottom.

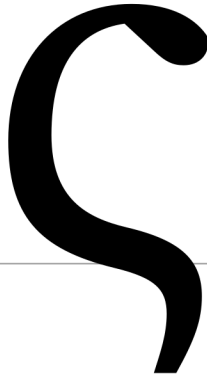
2

A thin black outline of the Greek letter omega (ω) on a horizontal baseline. The letter is overlaid with a red outline and a cyan outline, creating a 3D effect.A medium-weight black outline of the Greek letter omega (ω) on a horizontal baseline. The letter is overlaid with a red outline and a cyan outline, creating a 3D effect.A thick black outline of the Greek letter omega (ω) on a horizontal baseline. The letter is overlaid with a red outline and a cyan outline, creating a 3D effect.

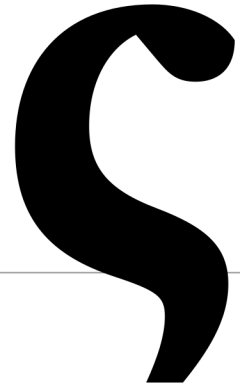
sigma.end | ς | U+03C2



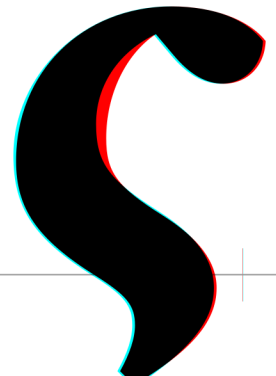
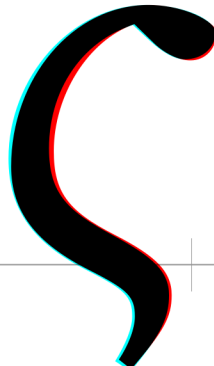
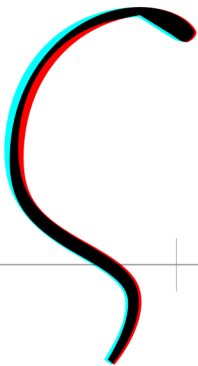
0



1



2



alphatonos | á | U+03AC

A thin, elegant cursive lowercase letter 'á' with a sharp, upward-pointing accent mark above it. The letter is black and sits on a thin horizontal baseline.

0

A medium-weight cursive lowercase letter 'á' with a sharp, upward-pointing accent mark above it. The letter is black and sits on a thin horizontal baseline.

1

A thick, bold cursive lowercase letter 'á' with a sharp, upward-pointing accent mark above it. The letter is black and sits on a thin horizontal baseline.

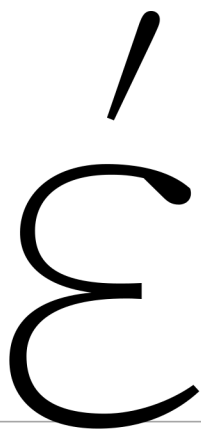
2

A thin, elegant cursive lowercase letter 'á' with a sharp, upward-pointing accent mark above it. The letter is black with red and cyan outlines, giving it a 3D effect. It sits on a thin horizontal baseline.

A medium-weight cursive lowercase letter 'á' with a sharp, upward-pointing accent mark above it. The letter is black with red and cyan outlines, giving it a 3D effect. It sits on a thin horizontal baseline.

A thick, bold cursive lowercase letter 'á' with a sharp, upward-pointing accent mark above it. The letter is black with red and cyan outlines, giving it a 3D effect. It sits on a thin horizontal baseline.

epsilon tonos | é | U+03AD

A thin, elegant black serif font for the Greek letter epsilon with an acute accent. The letter is light and delicate, with a thin stroke and a small, sharp accent mark above it. It is positioned on a horizontal baseline with vertical tick marks on either side.

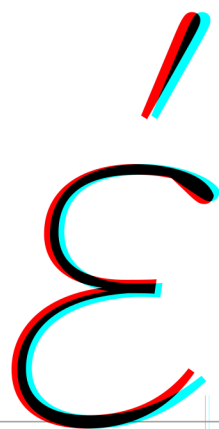
0

A medium-weight black serif font for the Greek letter epsilon with an acute accent. The letter has a balanced, classic appearance with a moderate stroke thickness and a clear, slightly rounded accent mark. It is positioned on a horizontal baseline with vertical tick marks on either side.

1

A thick, bold black serif font for the Greek letter epsilon with an acute accent. The letter is heavy and impactful, with a very thick stroke and a large, rounded accent mark. It is positioned on a horizontal baseline with vertical tick marks on either side.

2

A thin, elegant black serif font for the Greek letter epsilon with an acute accent, featuring a red and cyan shadow effect. The letter is light and delicate, with a thin stroke and a small, sharp accent mark. It is positioned on a horizontal baseline with vertical tick marks on either side.A medium-weight black serif font for the Greek letter epsilon with an acute accent, featuring a red and cyan shadow effect. The letter has a balanced, classic appearance with a moderate stroke thickness and a clear, slightly rounded accent mark. It is positioned on a horizontal baseline with vertical tick marks on either side.A thick, bold black serif font for the Greek letter epsilon with an acute accent, featuring a red and cyan shadow effect. The letter is heavy and impactful, with a very thick stroke and a large, rounded accent mark. It is positioned on a horizontal baseline with vertical tick marks on either side.

etatonos | ḥ | U+03AE

A thin, black, uppercase letter 'H' with a circumflex accent (two slanted lines above it) is shown. The letter is positioned on a horizontal baseline with vertical tick marks.

0

A medium-weight, black, uppercase letter 'H' with a circumflex accent is shown. The letter is positioned on a horizontal baseline with vertical tick marks.

1

A bold, black, uppercase letter 'H' with a circumflex accent is shown. The letter is positioned on a horizontal baseline with vertical tick marks.

2

A thin, black, uppercase letter 'H' with a circumflex accent is shown, featuring red and cyan outlines. The letter is positioned on a horizontal baseline with vertical tick marks.

A medium-weight, black, uppercase letter 'H' with a circumflex accent is shown, featuring red and cyan outlines. The letter is positioned on a horizontal baseline with vertical tick marks.

A bold, black, uppercase letter 'H' with a circumflex accent is shown, featuring red and cyan outlines. The letter is positioned on a horizontal baseline with vertical tick marks.

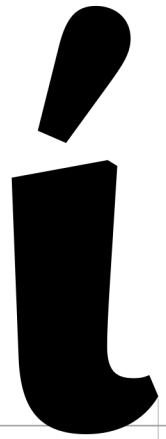
iotatonos | í | U+03AF



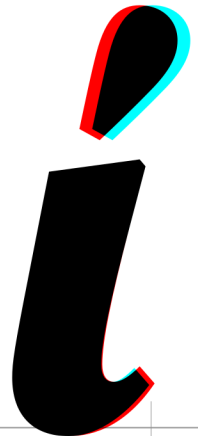
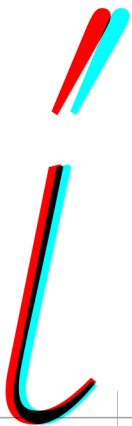
0



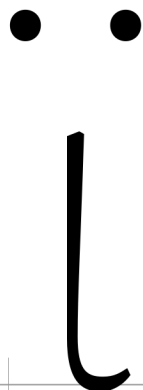
1



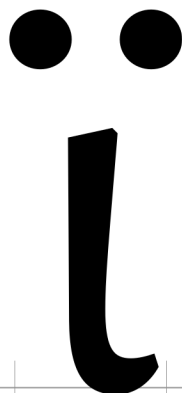
2



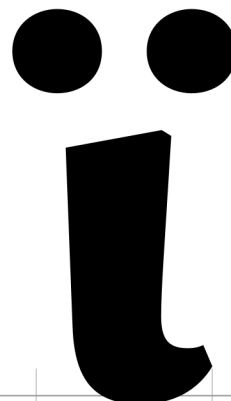
iotadieresis | ï | U+03CA



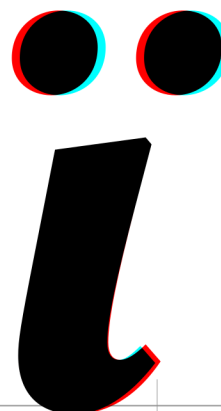
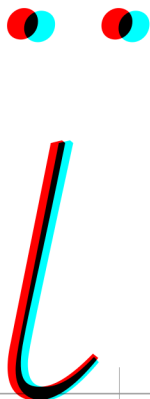
0



1

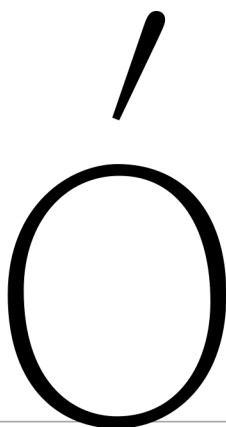


2

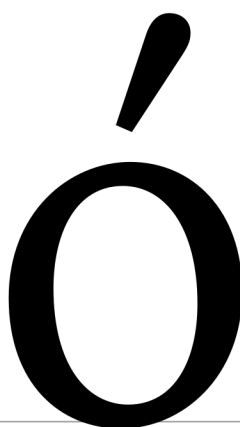




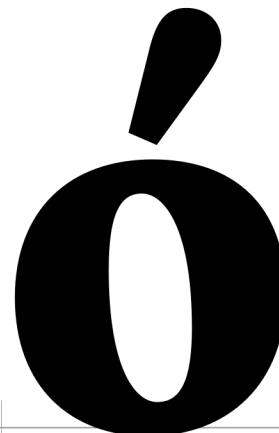
omicrontonos | ó | U+03CC



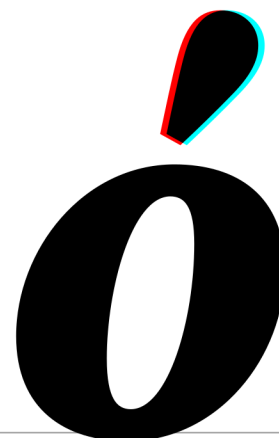
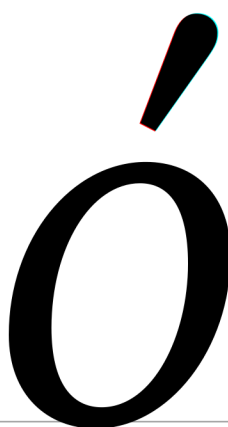
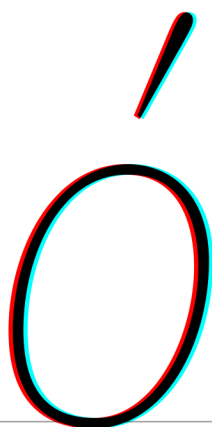
0



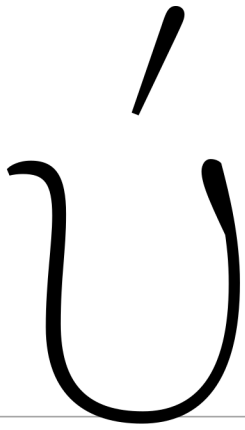
1



2



upsilontonos | ú | U+03CD



0



1



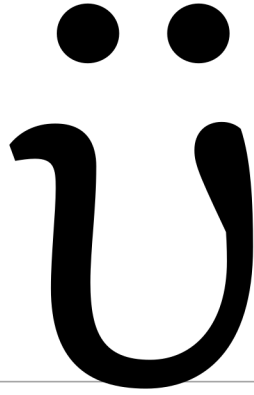
2



upsilondieresis | ü | U+03CB



0



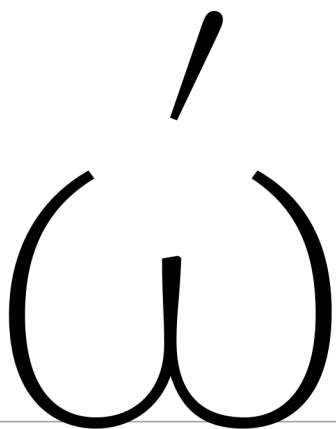
1



2

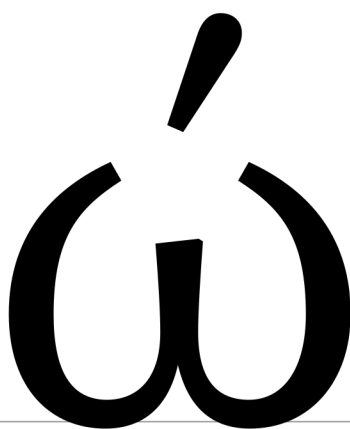


omegatonos | ó | U+03CE



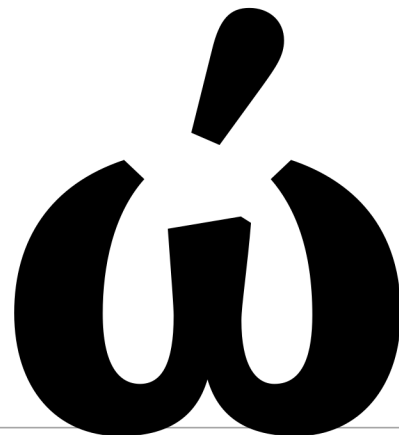
A thin, black outline of the Greek letter omega (ω) with an acute accent (´) above it. The character is positioned on a horizontal baseline with vertical tick marks on either side.

0



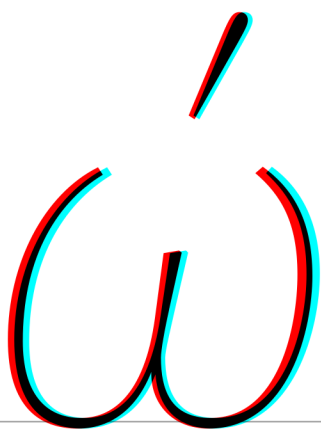
A medium-weight, black outline of the Greek letter omega (ω) with an acute accent (´) above it. The character is positioned on a horizontal baseline with vertical tick marks on either side.

1

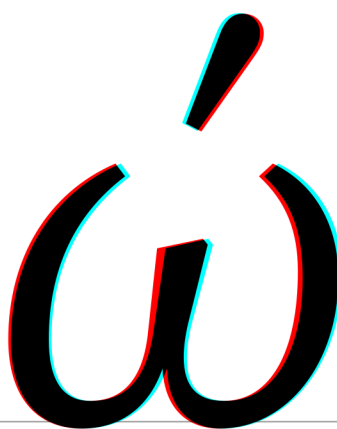


A thick, black outline of the Greek letter omega (ω) with an acute accent (´) above it. The character is positioned on a horizontal baseline with vertical tick marks on either side.

2



A thin, black outline of the Greek letter omega (ω) with an acute accent (´) above it, featuring a red and cyan shadow effect. The character is positioned on a horizontal baseline with vertical tick marks on either side.

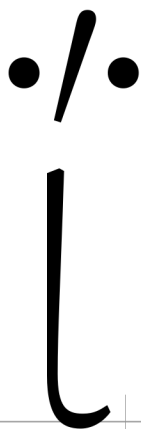


A medium-weight, black outline of the Greek letter omega (ω) with an acute accent (´) above it, featuring a red and cyan shadow effect. The character is positioned on a horizontal baseline with vertical tick marks on either side.

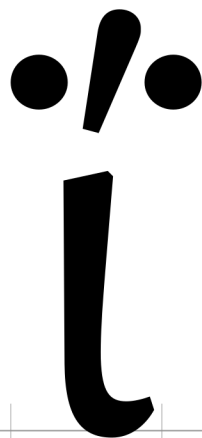


A thick, black outline of the Greek letter omega (ω) with an acute accent (´) above it, featuring a red and cyan shadow effect. The character is positioned on a horizontal baseline with vertical tick marks on either side.

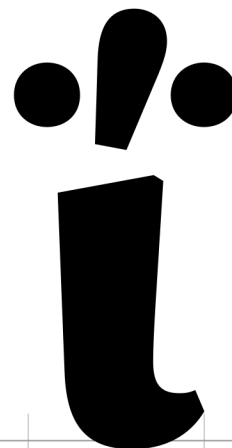
iotadierestonos | ĩ | U+0390



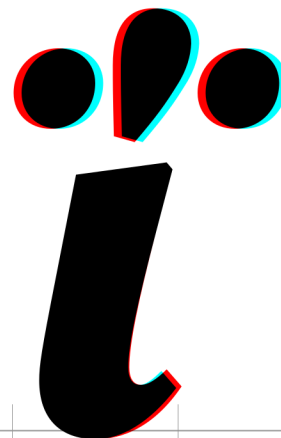
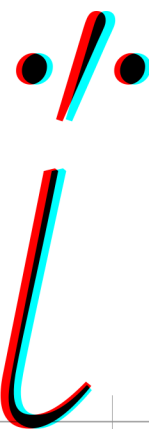
0



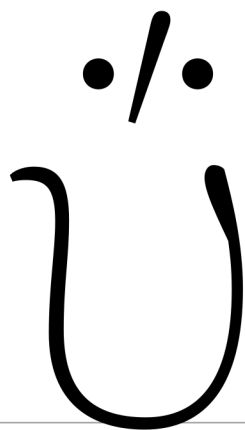
1



2



upsilondieresistonos | ũ | U+03B0



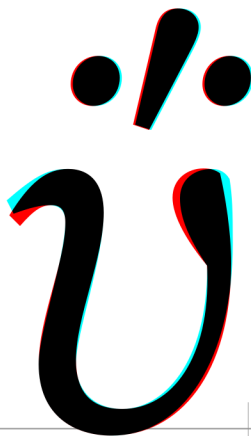
0



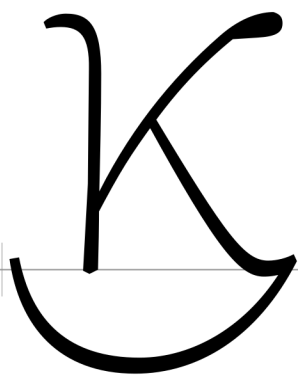
1



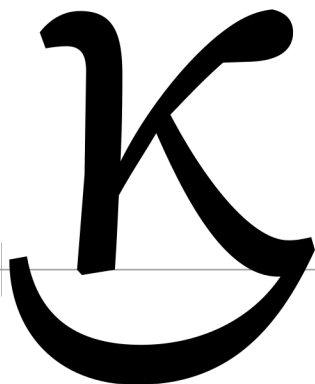
2



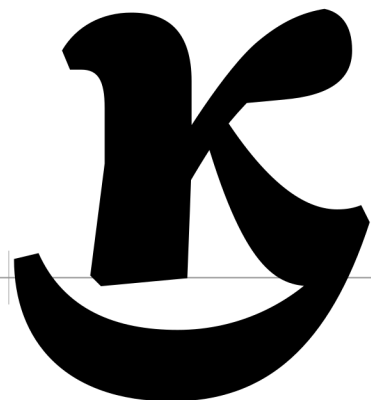
kai | 𐌆 | U+03D7



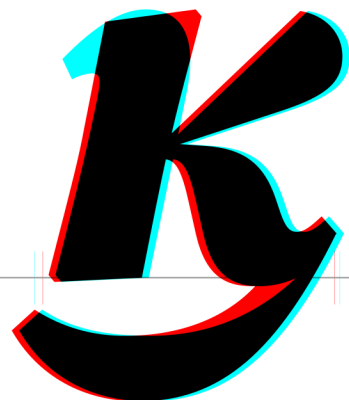
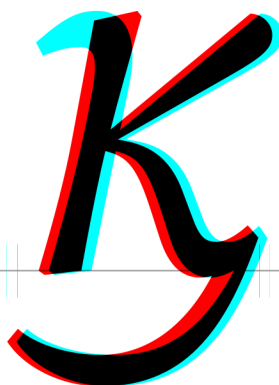
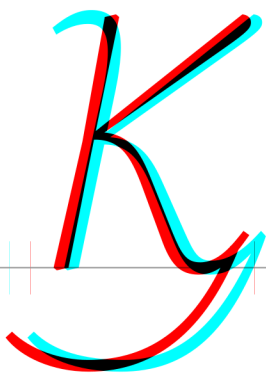
0



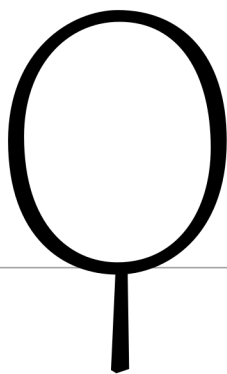
1



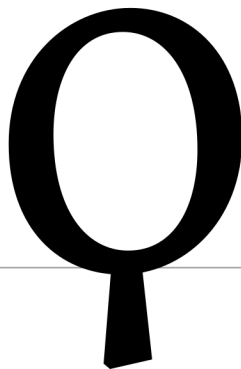
2



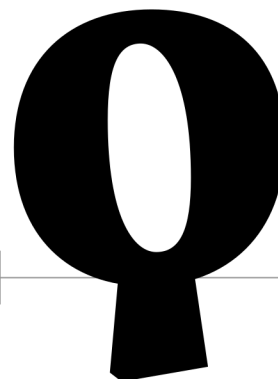
koppa | ϕ | U+03D9



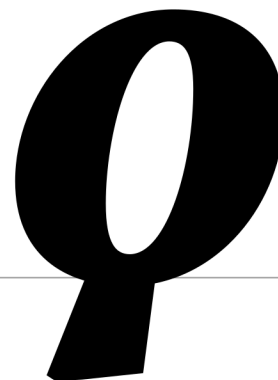
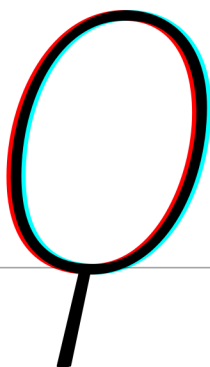
0



1

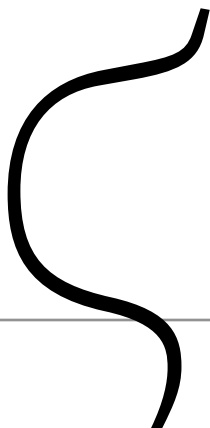


2

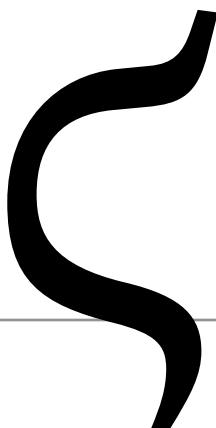




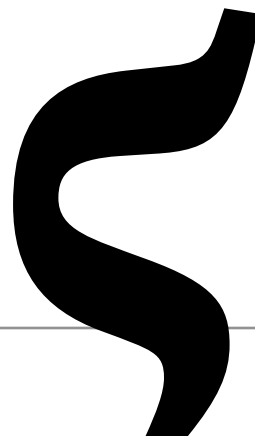
stigma | ζ | U+03DB



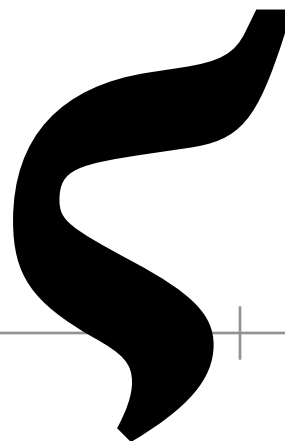
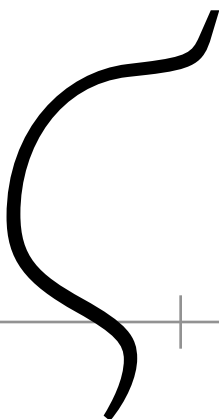
0



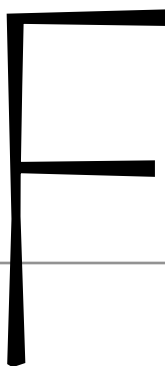
1



2

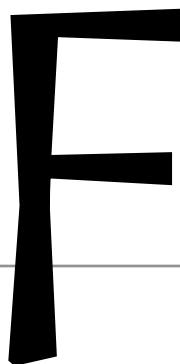


digamma | Ꝣ | U+03DD



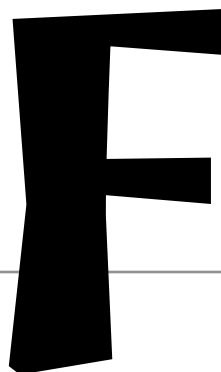
0

A black uppercase digamma glyph with a vertical stem that is slightly wider at the top and tapers towards the bottom. The stem has a small hook at the bottom. The top bar is horizontal and the middle bar is slightly shorter and positioned lower than the top bar.



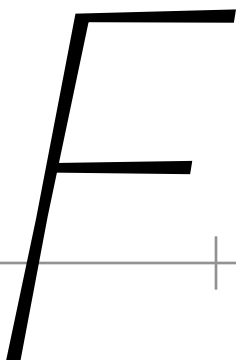
1

A black uppercase digamma glyph with a vertical stem that is wider at the bottom and tapers towards the top. The stem has a small hook at the bottom. The top bar is horizontal and the middle bar is slightly shorter and positioned lower than the top bar.



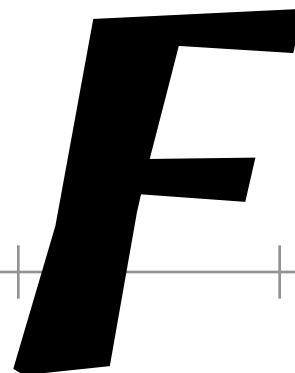
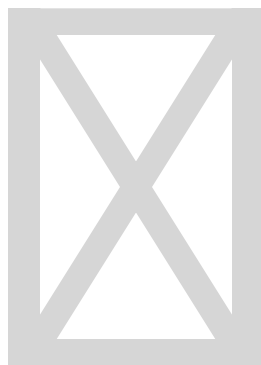
2

A black uppercase digamma glyph with a vertical stem that is wider at the bottom and tapers towards the top. The stem has a small hook at the bottom. The top bar is horizontal and the middle bar is slightly shorter and positioned lower than the top bar.



3

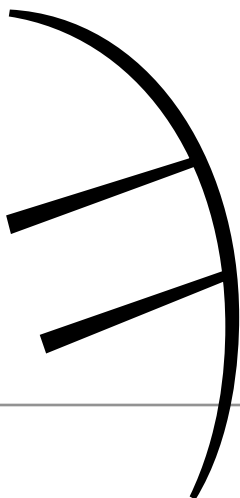
A black uppercase digamma glyph with a vertical stem that is wider at the bottom and tapers towards the top. The stem has a small hook at the bottom. The top bar is horizontal and the middle bar is slightly shorter and positioned lower than the top bar.



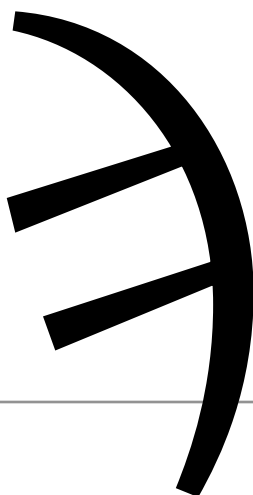
4

A black uppercase digamma glyph with a vertical stem that is wider at the bottom and tapers towards the top. The stem has a small hook at the bottom. The top bar is horizontal and the middle bar is slightly shorter and positioned lower than the top bar.

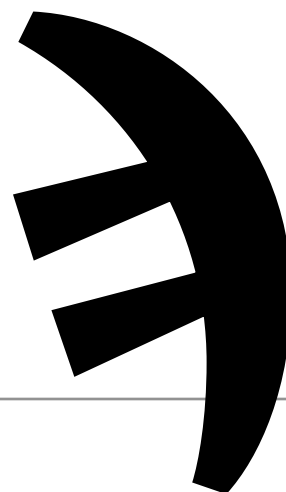
sampi | Ꞑ | U+03E1



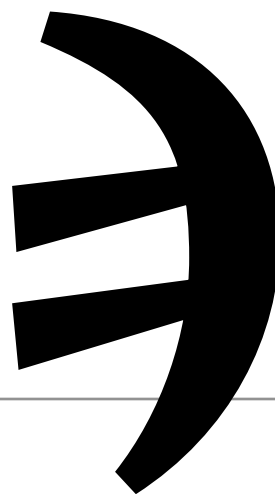
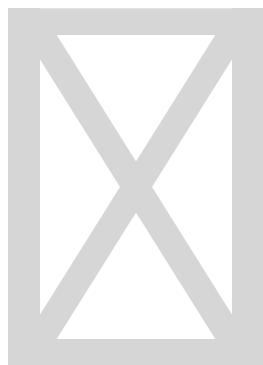
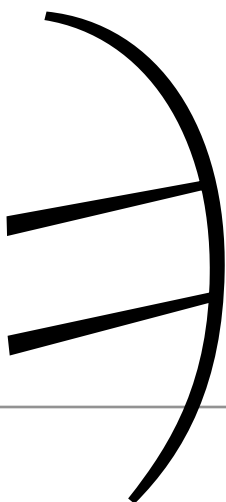
0



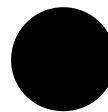
1



2



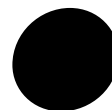
questiongreek | ; | U+037E



0

1

2



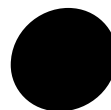
anoteleia | • | U+0387



0

1

2



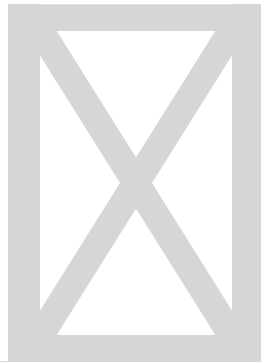
anoteleia.cap



0

1

2



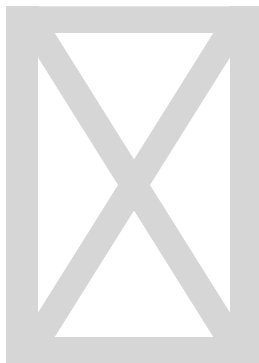
numeralsign | ' | U+0374



0

1

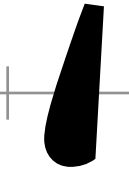
2



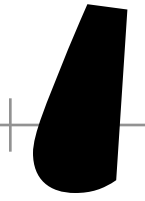
lownumeralsign | , | U+0375



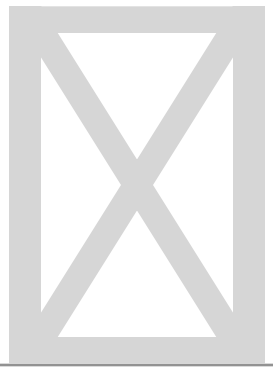
0



1



2





tonos | ´ | U+0384



0

1

2



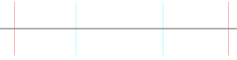
tonos.cap



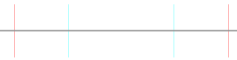
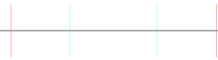
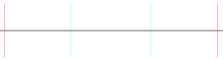
0



1



2



dieresistonos | " | U+0385



0

1

2



tonoscmb



0

1

2



dieresistonoscmb



0

1

2

