

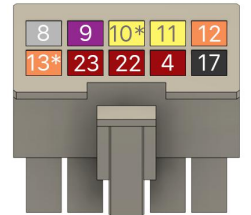
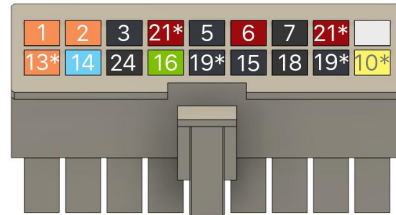
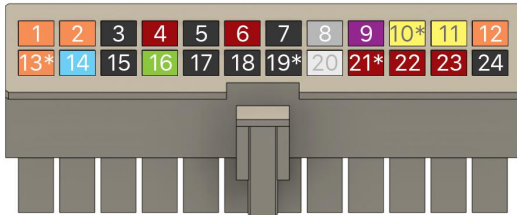
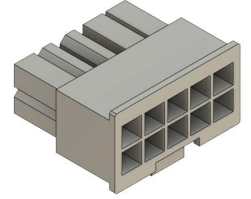
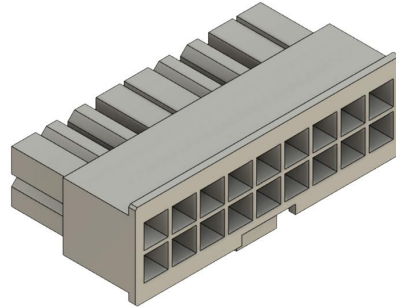
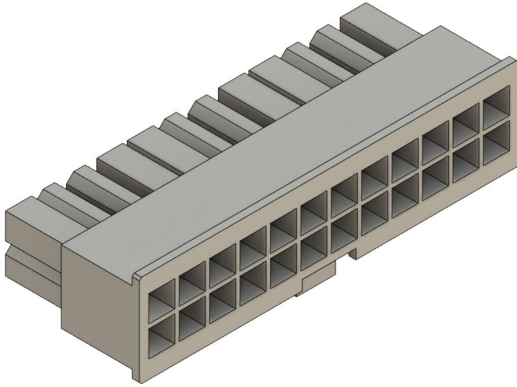
Corsair Type 4 Gen 3 Pinout - RMx/RMi/SF Series

- +3.3V
- +5V
- +5V Standby
- -12V
- Reserved
- Ground
- PWR Good
- +12V
- PWR On
- * Double Wire

ATX 24 Pin

Motherboard Side

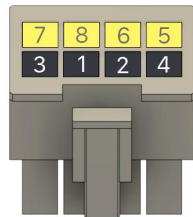
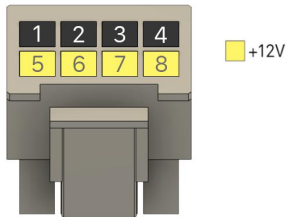
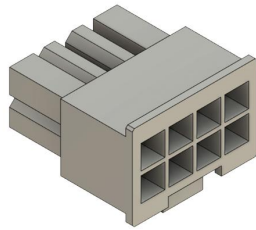
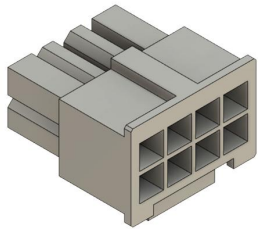
PSU Side



EPS 8-Pin

Motherboard Side

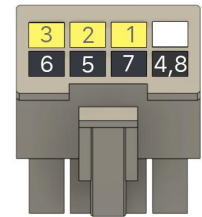
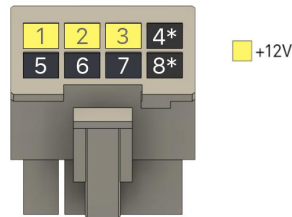
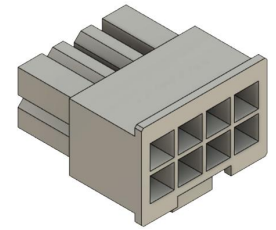
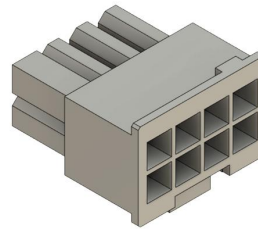
PSU Side



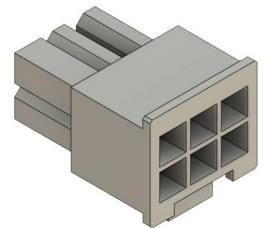
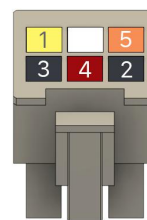
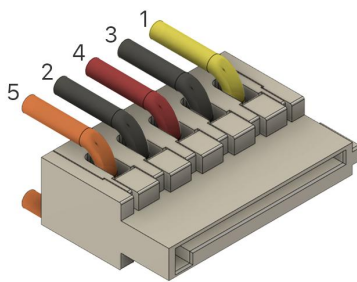
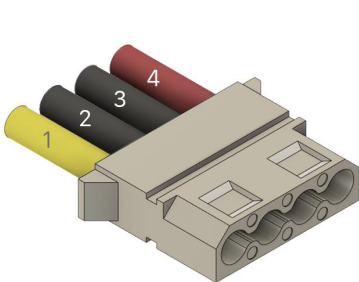
PCIe 8-Pin

GPU Side

PSU Side



Molex 4-Pin + SATA



- +3.3V
- +5V
- +5V Standby
- -12V
- Reserved
- Ground
- PWR Good
- +12V
- PWR On
- * Double Wire