

AsTeRICS

Quick-Start Guide

KI-I
Brigitte Nußbaumer

Document Information

Issue Date	17. Juni 2013
Status	final
Dissemination Level	PU PU Public PP Restricted to other programme participants (including the Commission Services) RE Restricted to a group specified by the consortium (including the Commission Services) CO Confidential, only for members of the consortium (including the Commission Services)

AsTeRICS – Assistive Technology Rapid Integration & Construction Set

Grant Agreement No.247730

ICT-2009.7.2 - Accessible and Assistive ICT

Small or medium-scale focused research project

Disclaimer

The information in this document is provided as is and no guarantee or warranty is given that the information is fit for any particular purpose. The user thereof uses the information at its sole risk and liability.

The document reflects only the author's views and the Community is not liable for any use that may be made of the information contained therein.

Table of Contents

1	General Information	4
1.1	Definition AsTeRICS.....	4
1.2	Definition ACS	4
1.3	Definition ARE	4
1.4	Required devices and conditions.....	4
2	Installation.....	5
2.1	Start the installation	5
2.2	Define the installation path	5
2.3	Select components.....	6
2.4	Define Start Menu folder entry.....	7
2.5	Progress of installation	7
2.6	Installation finish.....	8
2.7	Complete (check) the installation.....	8
2.7.1	Desktop Short Cuts.....	8
2.7.2	Programs in the Start Menu	8
3	Creating Models – a first Example	9
3.1	Reducing Tremor.....	12
3.2	Adjusting the Webcam.....	13

1 General Information

These instructions will help you to install the open-source-software AsTeRICS. The installation process will be described step-by-step.

1.1 Definition AsTeRICS

„**A**ssistive **T**echnology **R**apid **I**ntegration and **C**onstruction **S**et“.

With AsTeRICS, you can easily and economically build, use and adapt your efficient and individual "Assistive Technologies". The input capabilities of AsTeRICS are very flexible. AsTeRICS can be used and combined with different input-devices such as a webcam, switches or an on-screen scanning keyboard.

The various output-capabilities of the system include PC device emulation, game control, environmental control applications and utilization of embedded devices.

1.2 Definition ACS

AsTeRICS **C**onfiguration **S**uite is a graphical editor for easy building and adapting "Assistive Technologies".

For this purpose you use sensors, actuators and processors, which are included in the software. You can connect these elements and build your own individual setup (also called a "model"), which is specially adapted for your needs, easily and fast.

1.3 Definition ARE

The **A**sTeRICS **R**untime **E**nvironment is the basic software framework for all AsTeRICS applications and use-cases. The models built in the ACS will run in the ARE. The ACS can be seen as a configuration program for the ARE.

1.4 Required devices and conditions

- AsTeRICS hardware platform (<http://asterics.harpo.com.pl/hardware.html>)
Or a PC / notebook with Windows XP / VISTA / 7 or later
- Internet access

2 Installation

The AsTeRICS provides installer for Windows, Linux and Mac OSX, but only on Windows the full AsTeRICS suite is supported. On the other platforms the installer only contains the ARE. For detailed platform-specific installation instructions, please refer to the [release documentation](#).

The following steps describe how the AsTeRICS software framework can be installed on a PC with Windows operating system.

Download the AsTeRICS setup executable from the [github releases section](#).

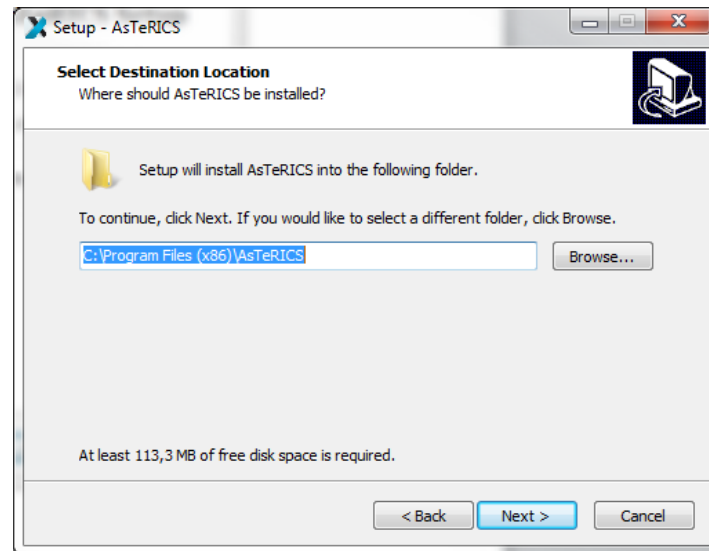
2.1 Start the installation

Start the setup file.



You should see the welcome window. It informs you which version of the software you are installing. Click the button „**Next**“.

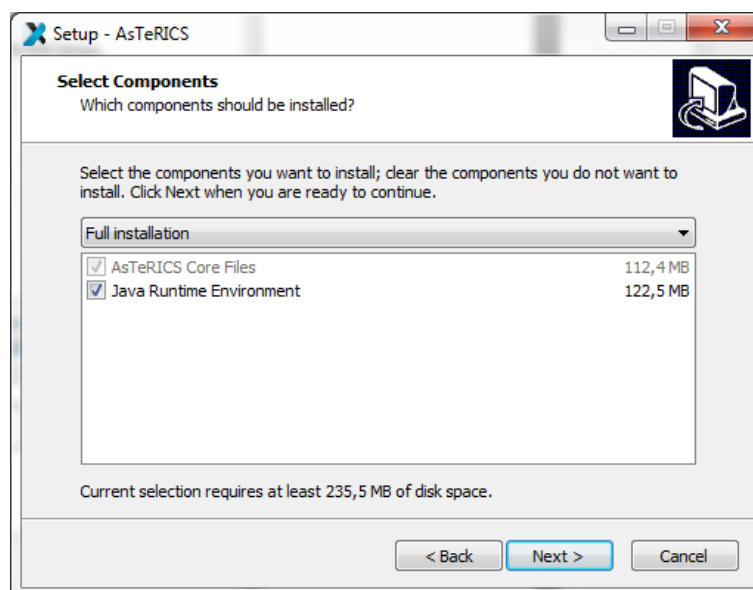
2.2 Define the installation path



In this dialogue window you can define the installation path that means you can choose a folder, where Asterics should be installed. We suggest using the standard installation path. Then Click the button „**Next**“.

2.3 Select components

You can see the component selection window:

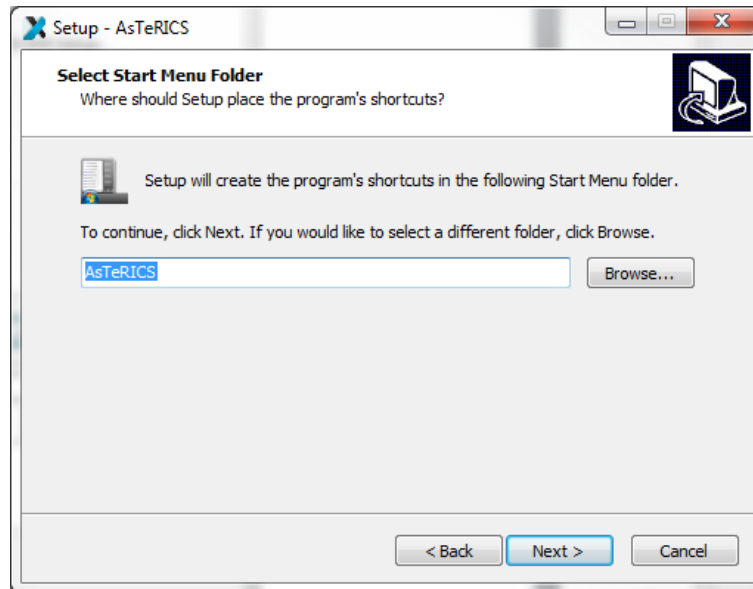


AsTeRICS needs the Java Runtime Environment (\geq Version 7, 32-Bit Version). If you have already installed the Java Runtime Environment on your computer, please deselect this option and install only AsTeRICS. (Note: The 32-bit version of the JRE is recommended, because some plugins only work in 32-bit mode.

Then, click the button „**Next**“.

2.4 Define Start Menu folder entry

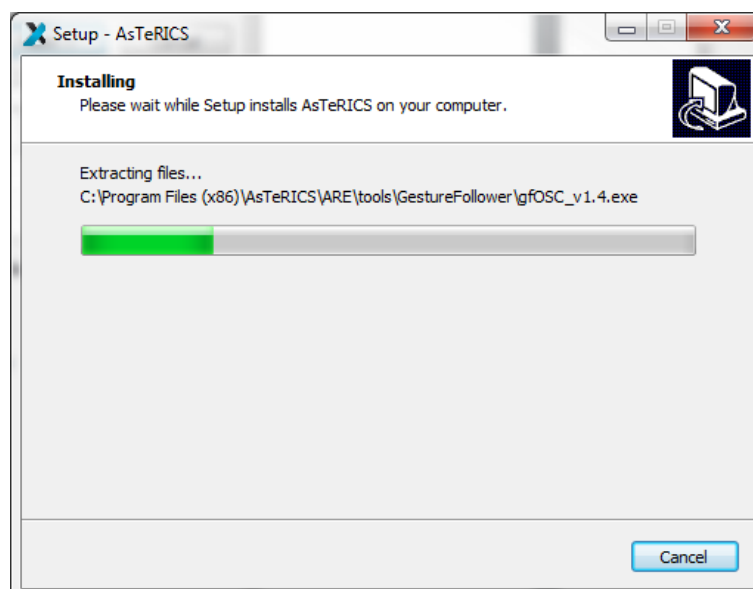
In the next dialogue window you can define the name of the start menu entry. You can see the following window:



Then, click the button „**Next**“.

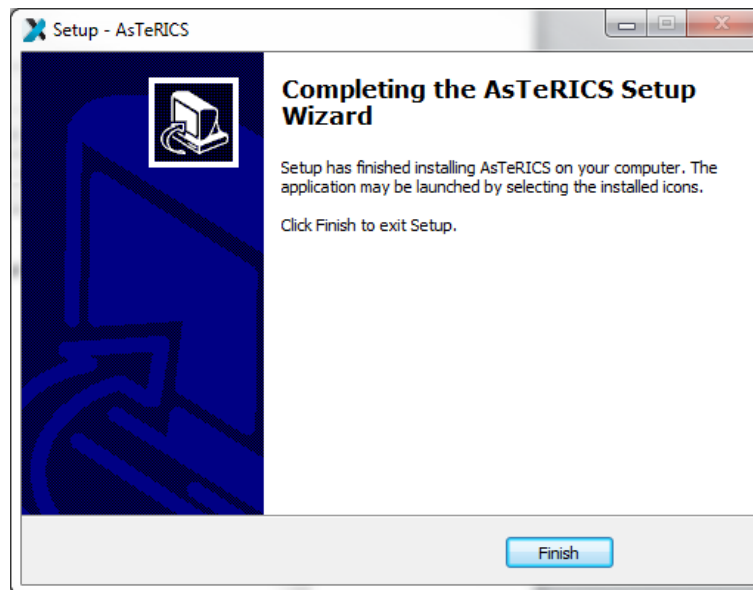
2.5 Progress of installation

In the next dialogue window you can see the progress of the installation. It can take a few minutes until the process is finished:



2.6 Installation finish

You can see the following window:



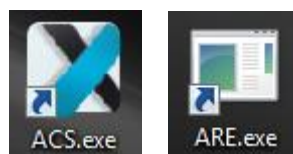
Click the button „**Finish**“.

You have successfully installed AsTeRICS.

2.7 Complete (check) the installation

2.7.1 Desktop Short Cuts

On your desktop you will find the following links (short cuts):



These short cuts can be used to start ACS and ARE. Alternatively, you can start these programs also from the Windows start menu, where additional links to the Debug version of the ARE (which displays debugging information in a console window) and the AsTeRICS uninstaller have been added:

2.7.2 Programs in the Start Menu

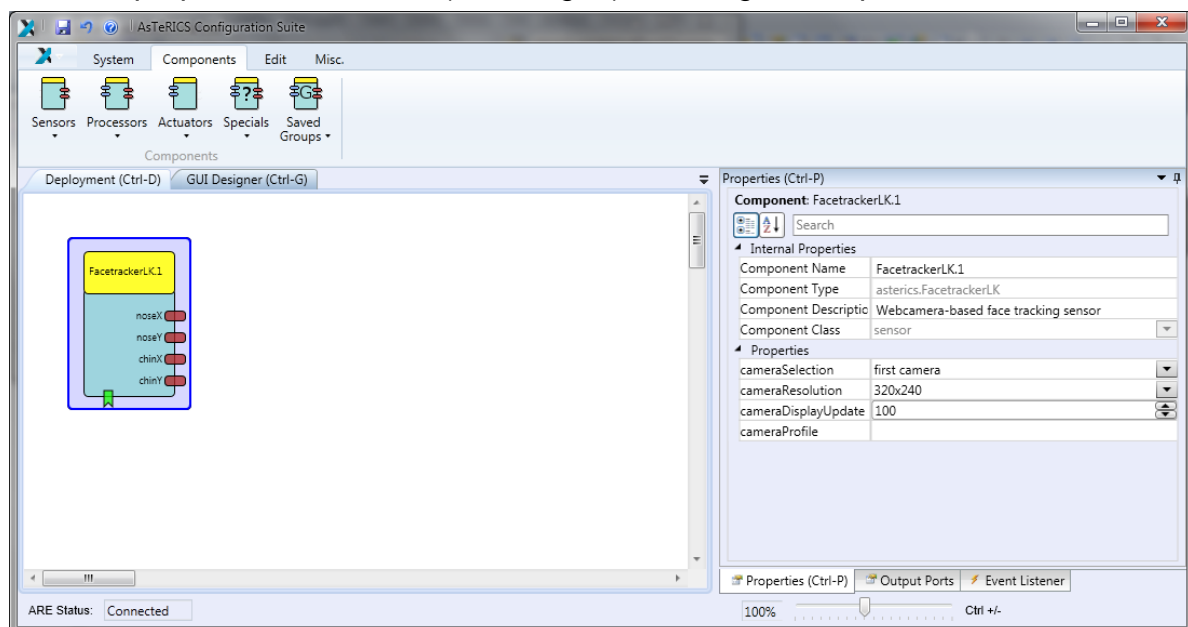
Under Windows-start „**All Programs**“ you will find the start folder „**AsTeRICS**“ and the start-files.



3 Creating Models – a first Example

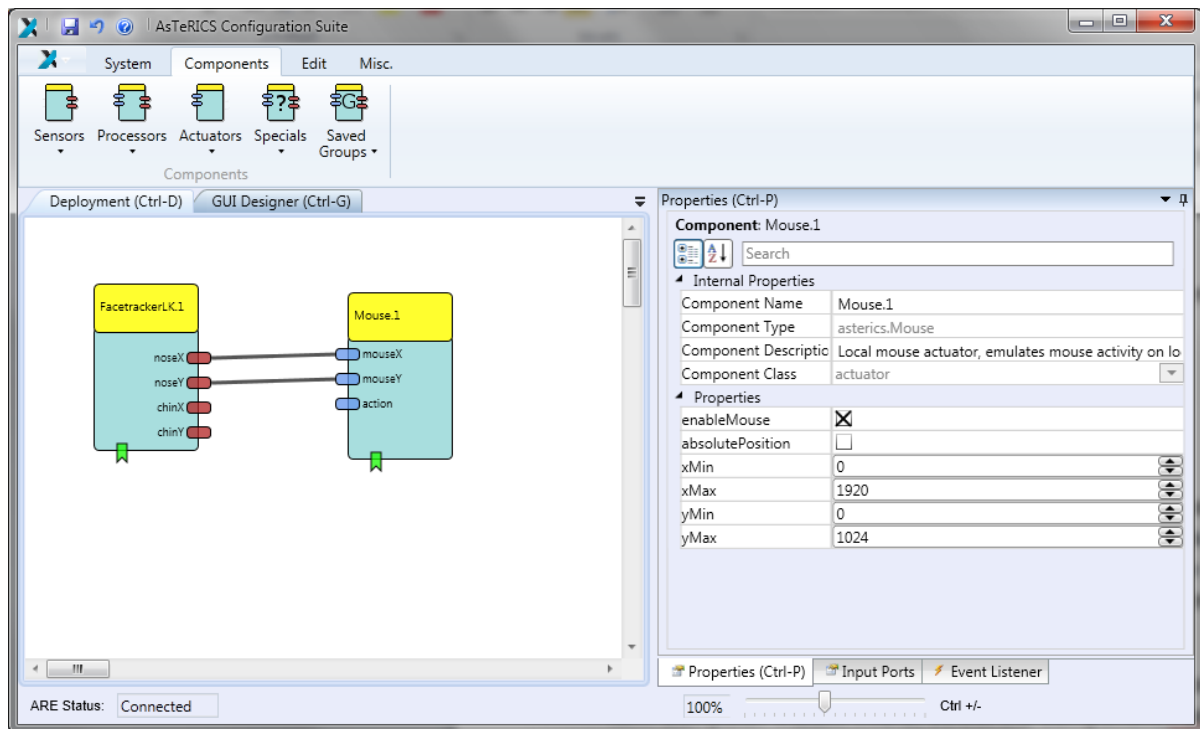
A model is a collection of 1 to n components, where a component represents a plugin of the ARE. These components are connected via cannels (for data connections) and event channels (representing events). The following example will illustrate the creation of a simple webcam mouse, using the position of the nose to control the cursor and opening the mouth to trigger a mouse click. This model requires a connected and installed webcam.

In a first step, start the ACS and the ARE using the ACS.exe and ARE.exe short cuts. In the ACS window select the tab 'Components', then 'Sensors' and within the sensors the menu item 'Computer Vision'. There select the component *FacetrackerLK*. The component is now on the drawing area and, if the component is selected, properties can be set (or changed) in the rightmost part of the ACS window.



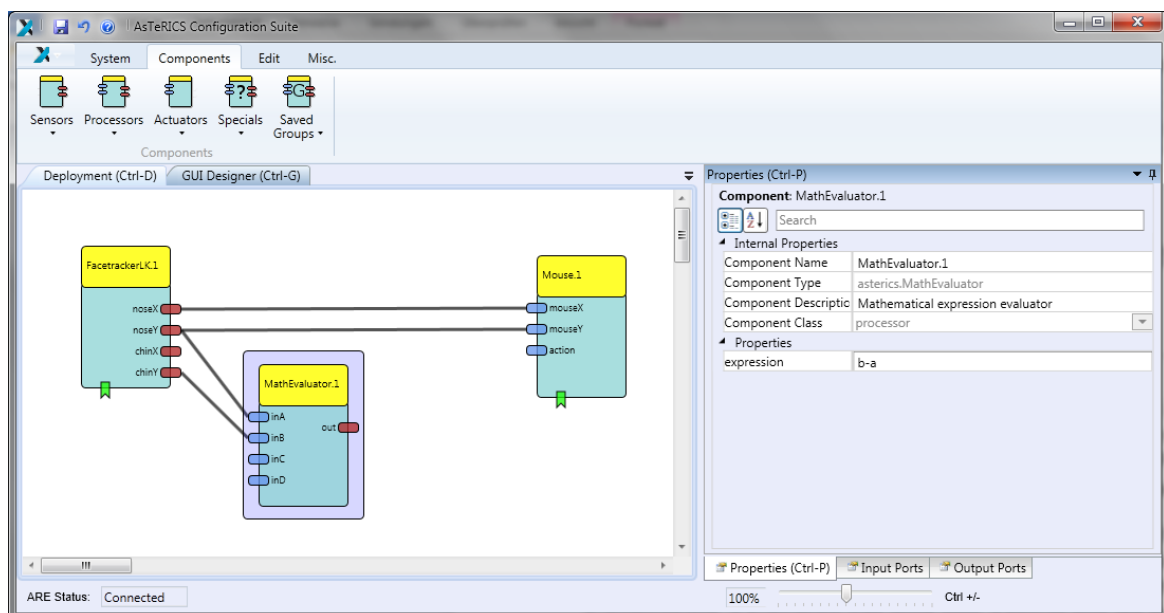
The next needed component is the 'Mouse', it can be found by selecting 'Actuators' - > 'Input Device Emulation'. After the insert, select the Mouse component and adapt the properties. Deactivate *absolutePosition* and set the *xMax* and *yMax* to your screen resolution.

In the next step, connect the *noseX* and the *noseY* outputs of the 'FacetrackerLK' with the *mouseX* and *mouseY* inputs of the Mouse. Finally, it should look like the screenshot below.

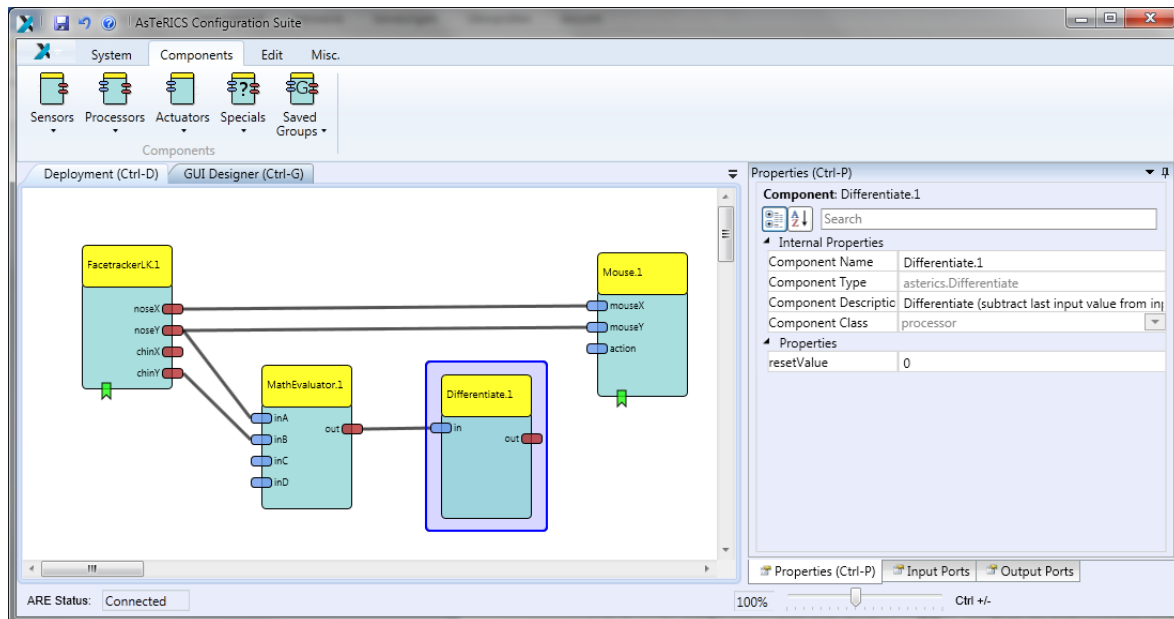


The model now would be able to use the coordinates of the nose to control the mouse cursor, but the mouse click is still missing.

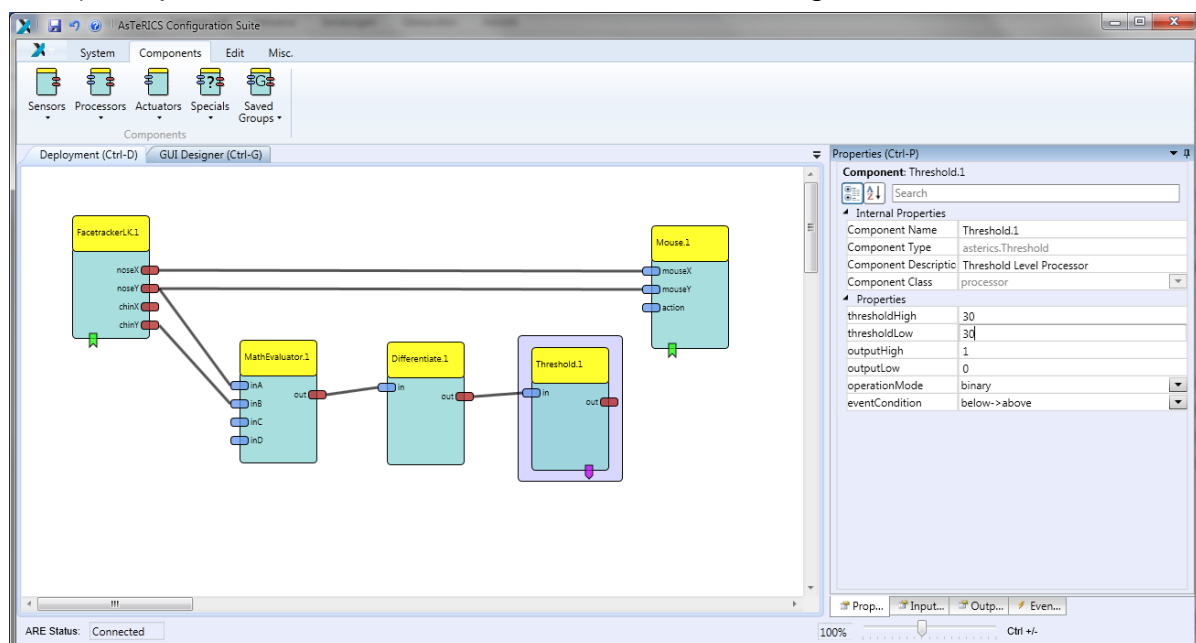
For the mouse clicking functionality, we first need the 'MathEvaluator' ('Processors' - > 'Basic Math') plugin. We connect the *noseY* output of the 'FacetrackerLK' the with the *inA* input of the 'MathEvaluator' and likewise the *chinY* with *inB*. In the properties of the 'MathEvaluator', we set the property *expression* to '*b-a*'.



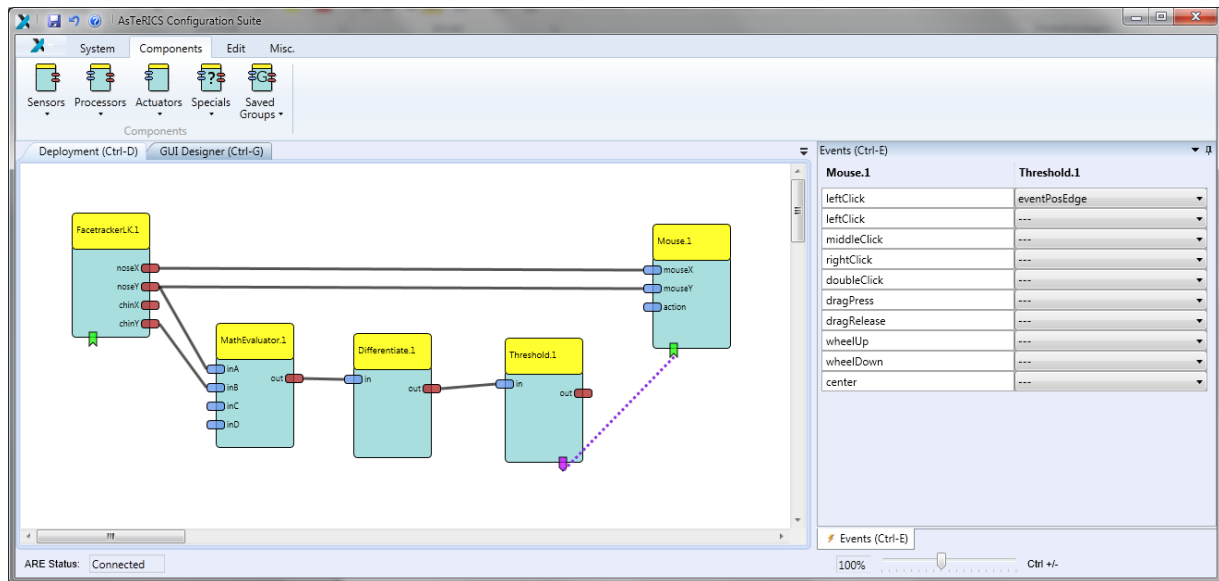
We will 'Differentiate' ('Processors' -> 'Basic Math') the *out* value to react on a fast change of the nose to chin distance.



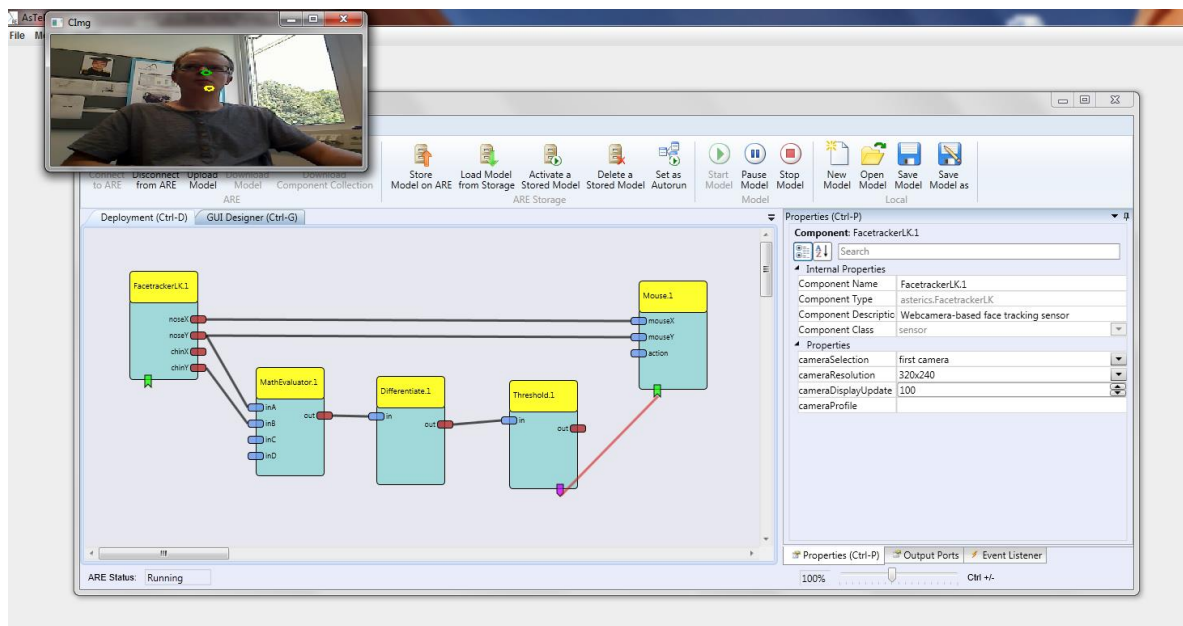
This processed value will then be forwarded to a '*Threshold*' ('Processors' -> '*Basic Math*') component. Set the *thresholdLow* and *thresholdHigh* values to 30.



As a final step, connect the event trigger output of the '*Threshold*' with the event listener input of the '*Mouse*' – the event triggers and listeners are at the bottom of the components. After the connection has been made, set the *leftClick* to *eventPosEdge* in the property editor at the right. If everything was done right, it should look like the following screenshot:



Now, upload the model to the ARE and press the '*Start Model*' button. A window with the camera screen will appear, marking with a green and yellow circle - the position of nose and chin. Press the '*Stop Model*' button or press *F7* to stop the model and get the control of the mouse back. Below is a screenshot of the system, when running.

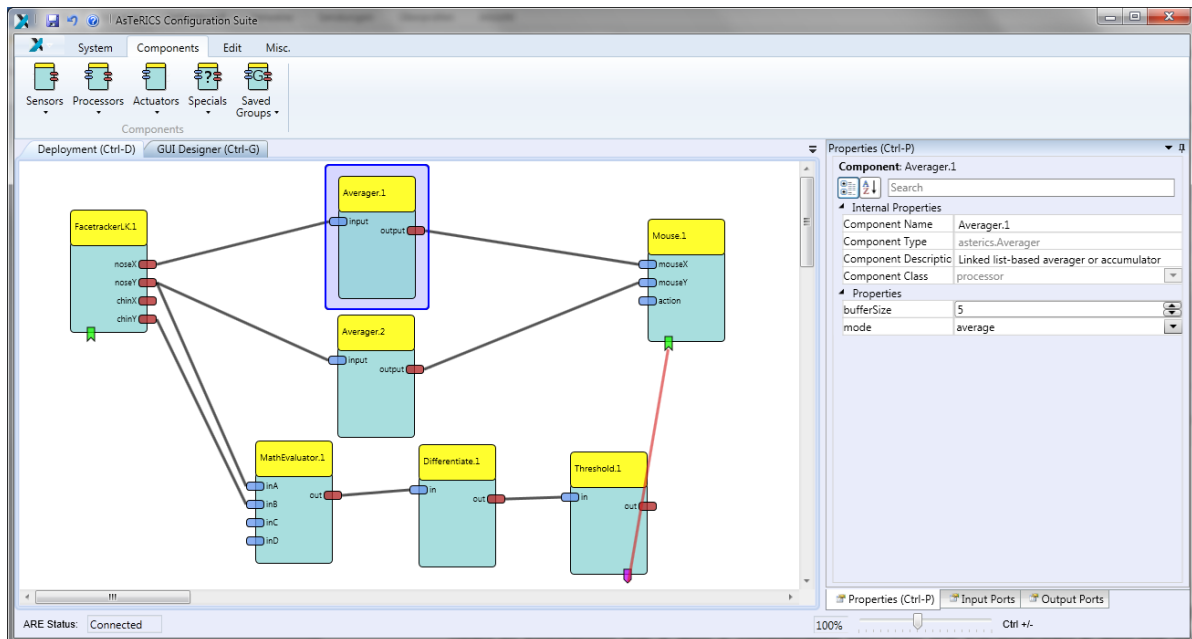


Congratulations, your first AsTeRICS model is running!

3.1 Reducing Tremor

You might have noticed that the mouse pointer has a tremor, because the head is always in movement to a certain extent. To reduce this tremor, an '*Averager*' ('Processors' -> '*Basic Math*') will be used to smoothen the X coordinates and

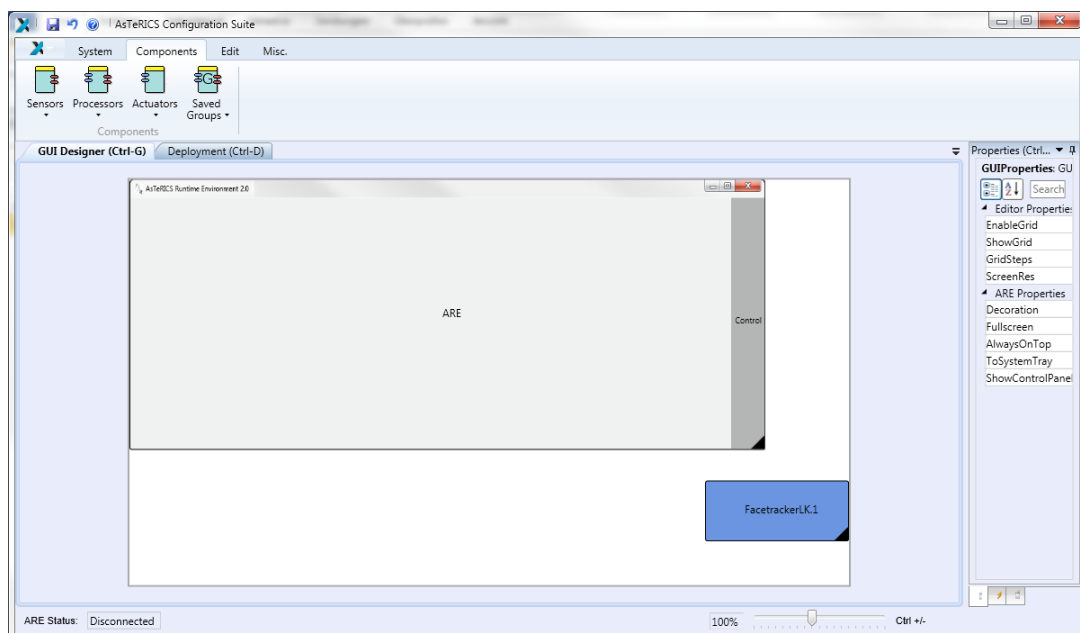
another 'Averager' for the Y coordinates between the 'FacetrackerLK' and the 'Mouse'. The *bufferSize* in the properties will be set to 5.



That's all, just upload the model and start it now.

3.2 Adjusting the Webcam

If you don't like the position of the webcam after starting the model, you can set a different start position. Select the '*GUI Designer*' tab above the drawing area and move the webcam window to an area, which is comfortable to you. Also the size of the window can be adjusted.



Upload and start the model to work with the changes.

**For more examples and detailed descriptions of the features of ACS and ARE,
please refer to the AsTeRICS user manual !**