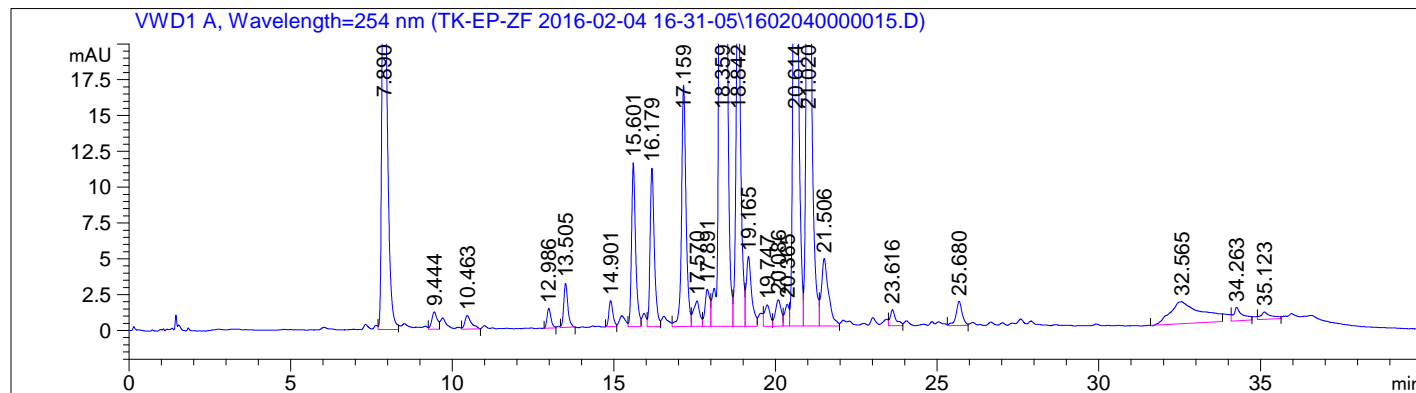


```

=====
Acq. Operator   : Fang Weifei                Seq. Line :   11
Acq. Instrument : LC18                      Location  : Vial 5
Injection Date  : 2/5/2016 2:54:23 AM        Inj       :    1
                                           Inj Volume: 20.000 µl

Acq. Method     : C:\CHEM32\1\DATA\TK-EP-ZF 2016-02-04 16-31-05\TK-EP-ZF-00.M
Last changed    : 2/4/2016 4:31:06 PM by Fang Weifei
Analysis Method : C:\CHEM32\1\DATA\TK-EP-ZF 2016-02-04 16-31-05\1602040000015.D\DA.M (TK-EP-ZF-00.M, From Data File)
Last changed    : 2/5/2016 11:16:42 AM by Fang Weifei
ECM Server      : http://xcqc-ecm/xcqc
ECM Operator    : Hu Haipeng
ECM Path        : \2016\LC18\DATA\TK-EP-ZF\TK-EP-ZF 2016-02-04 16-31-05.SC.SSIzip
ECM Version     : 3
  
```



Area Percent Report

```

Sorted By      : Signal
Multiplier     : 1.0000
Dilution       : 1.0000
Do not use Multiplier & Dilution Factor with ISTDs
  
```

Signal 1: VWD1 A, Wavelength=254 nm

Peak #	RetTime [min]	Type	Width [min]	Area [mAU*s]	Height [mAU]	Area %
1	7.890	VB	0.1641	349.25964	31.91924	7.5725
2	9.444	VV	0.1699	14.16163	1.21160	0.3070
3	10.463	BV	0.1981	13.26991	9.49152e-1	0.2877
4	12.986	BB	0.1270	11.54018	1.37612	0.2502
5	13.505	BB	0.1312	26.98778	3.08388	0.5851
6	14.901	BV	0.1322	15.89111	1.82466	0.3445
7	15.601	VV	0.1345	101.88943	11.43819	2.2091
8	16.179	VV	0.1373	101.25947	11.07420	2.1955
9	17.159	VV	0.1438	163.39235	16.83321	3.5426
10	17.570	VV	0.1874	24.13118	1.77846	0.5232
11	17.891	VV	0.1582	27.66267	2.58732	0.5998
12	18.359	VV	0.1357	2097.35303	232.67348	45.4738
13	18.842	VV	0.1424	262.67590	27.40594	5.6952
14	19.165	VV	0.1670	56.33316	4.86837	1.2214
15	19.747	VV	0.1754	17.23633	1.47777	0.3737
16	20.086	VV	0.1911	23.44268	1.83671	0.5083
17	20.365	VV	0.1383	14.16487	1.53427	0.3071
18	20.614	VV	0.1412	552.95300	59.11164	11.9889

Peak #	RetTime [min]	Type	Width [min]	Area [mAU*s]	Height [mAU]	Area %
19	21.020	VV	0.1479	496.00180	49.95060	10.7541
20	21.506	VV	0.2142	72.40385	4.71357	1.5698
21	23.616	VV	0.1768	13.90677	1.12036	0.3015
22	25.680	VV	0.1953	22.66832	1.69532	0.4915
23	32.565	BB	0.8079	103.90839	1.53934	2.2529
24	34.263	BB	0.2532	18.19179	9.47074e-1	0.3944
25	35.123	BB	0.2886	11.53689	5.18760e-1	0.2501

Totals :                                   4612.22215   473.46922

=====  
\*\*\* End of Report \*\*\*