

From: [Kolesniak, Greg](#)
 To:
 Cc: [Tabbemor, Alan](#); [Cory Paterson \(corp@bctrucking.com\)](#); [Kolesniak, Greg](#)
 Subject: Truck Route Planner - User Test Group
 Dates: Thursday, March 12, 2020 5:01:46 PM
 Attachments: [image001.png](#)
[image004.png](#)
[image005.png](#)
[image002.png](#)

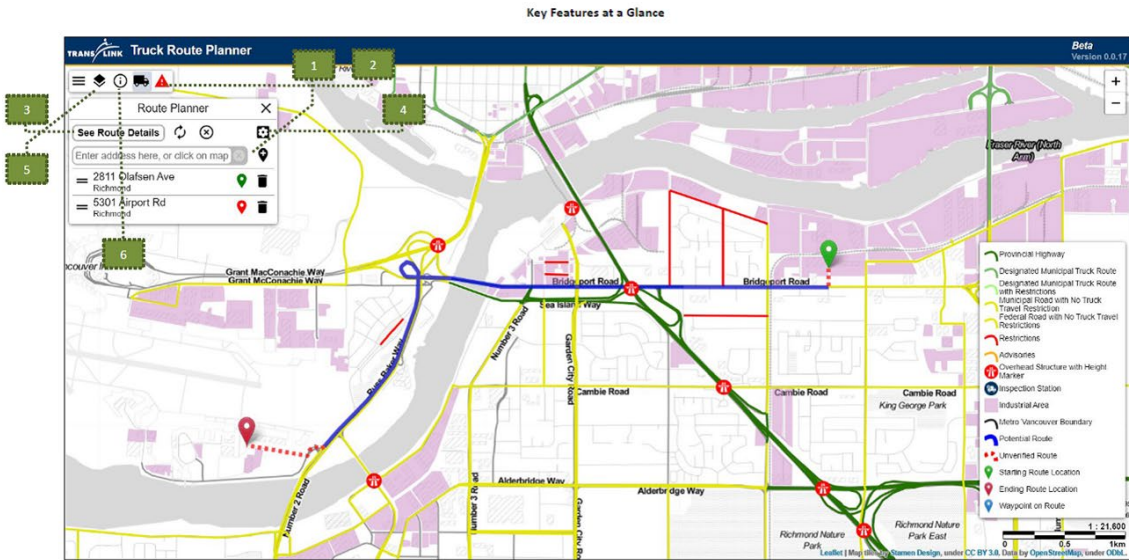
Dear <Name>:

Your contact information was provided to us courtesy of the BC Trucking Association (BCTA) in response to a request to help us identify a small user test group for a new trip planning and wayfinding application – the *Truck Route Planner (TRP)*. Thank you for volunteering to “test drive” the new App as we continue to improve it over the coming weeks and months.

You can access the App here: <https://bcgov.github.io/smk-tlink>

Please provide your input and comments in response to the questions below to me (Greg.Kolesniak@Translink.ca) or Alan.Tabbemor@Translink.ca with a copy to [Cory Paterson \(corp@bctrucking.com\)](mailto:Cory.Paterson@bctrucking.com), ideally by Friday, March 20, 2020. If you require additional time to submit your comments, we will happily accept them post-March 20 as potential enhancements for future releases of the App.

- **Unexpected routes generated by the App – please send us screenshots of any unexpected routes.**
 - The expected behaviour of the App is to route trucks by “snapping” to the Truck Route Network (TRN) based on the shortest distance between the user-entered origin and destination. However, there may be instances when a generated route, despite being compliant with municipal truck route bylaws, is not the route a driver would typically take (i.e., an alternate bylaw-compliant route is available). It is these edge cases that we are particularly interested in so we can “tune” the router against “benchmark routes” we receive from you.
 - You can modify a given generated route by adding additional waypoints (point and click) or moving existing waypoints (drag and drop).
- **App extent** - Is there value in showing generated routes outside Metro Vancouver, given the constraints described below are likely to be in place when it is launched?
 - The App would only generate routes on Provincial infrastructure outside Metro Vancouver as routing information on municipal roads outside the Metro Vancouver area is not readily available at this time.
 - Generated routes would be shown as a dotted red line only, where a dotted red line denotes an “unverified route” (blue solid line denotes a “potential route” that complies with bylaw requirements).
- **Route Itinerary** - How should route reports/notices be displayed?
 - in-line with directions
 - separate report?
 - both? (as is currently the case)
- **Provide any general comments and suggestions** regarding the App’s user interface and its cartographic layers.



1. **Generating Routes:** Add an origin/destination and intermediate waypoints (if applicable) using the search bar or by clicking on the map. Drag & drop waypoints to adjust the route.
2. **Reports & Notices:** Click the red “caution” icon to view reports and notices on screen.
3. **Route Detail Sheet:** Print turn-by-turn directions and applicable reports and notices for a generated route.
4. **Vehicle Options:** Configure your vehicle (Type, Height, Width, Length, GVW etc). Don’t see your specific vehicle type? Please use “other”.
5. **Visual reference layers:** Toggle various cartographic layers such as height restrictions, pre-screened OS-OW vehicle routes, and long-term partial/full truck route closures and detours (currently none shown, but we’re working on providing this information in future releases).
6. **Identify Tool:** Select the identify tool and click on any of the visual reference layers (lines/icons) to get additional information.

Background

The Truck Route Planner (TRP) is intended to be an interactive, easy to understand trip-planning application for goods movement in Metro Vancouver. It improves on existing regional way-finding and trip planning tools, which was identified as an implementation priority in the [Regional Goods Movement Strategy \(RGMS\)](#).

This new, web-based map application has multiple layers, such as truck parking facilities, card locks, and height clearances. It is intended to augment, rather than replace existing regional and municipal maps and trip planning tools, including TransLink’s [Truck Route Reference Guide and Map \(2.6 MB\)](#), which pulls together basic information about the region’s truck route network.

A key feature of the TRP is a route query function which generates potential routes that comply with municipal truck route bylaws. This feature allows users to plan bylaw-compliant truck routes throughout the region quickly and easily. Simply enter vehicle dimensions, a starting point, intermediate waypoints, and a destination to generate a potential route that factors in information such as height and weight restrictions.

The TRP is being developed as a partnership between TransLink and the Province. BCTA provided an update on the proof-of-concept for the App (previously known as the CVRP) in the *BCTA Bulletin*: <https://www.bctrucking.com/bulletin/2019/02/04/translink-demonstrates-cvrp-app-bcta-members>

Best wishes,

GREG KOLESNIAK
 Project Manager, Roads & Goods Movement Initiatives
 Infrastructure Program Management
 T: 778.375.6798 | C: 604.218.0684 | translink.ca

TransLink
 400-287 Nelson’s Court, New Westminster, BC, V3L 0E7, Canada



