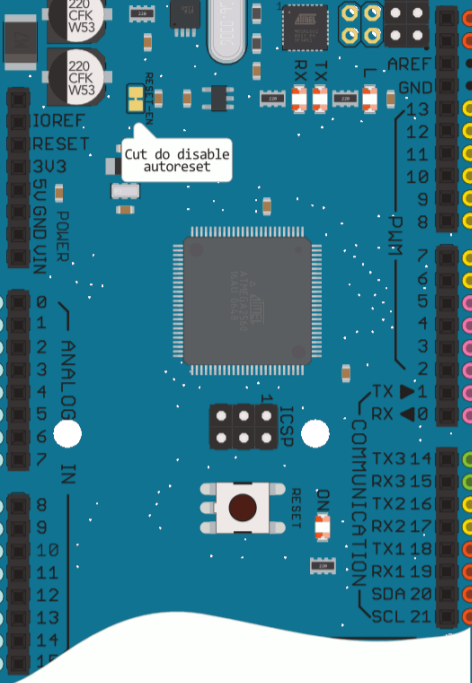
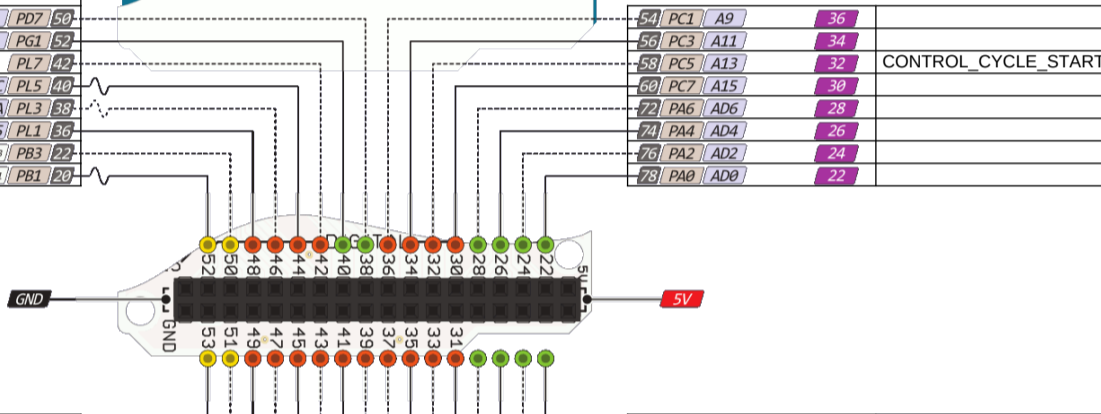


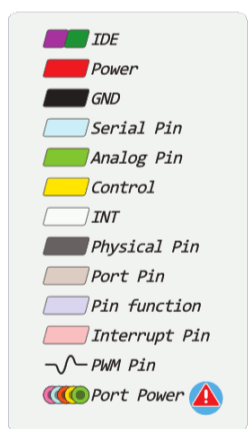
X Step	54	A0	ADC0	PF0	97	
X Dir	55	A1	ADC1	PF1	96	
Y Enable	56	A2	ADC2	PF2	95	
PROBE	57	A3	ADC3	PF3	94	
	58	A4	ADC4	TCK	93	
UI_MATRIX_KEYPAD_PIN_C1	59	A5	ADC5	TMS	92	
Y Step	60	A6	ADC6	TDO	91	
Y Dir	61	A7	ADC7	TDI	90	
Z Enable	62	A8	ADC8	PK8	89	
UI_MATRIX_KEYPAD_PIN_R4	63	A9	ADC9	PK1	88	
UI_MATRIX_KEYPAD_PIN_C2	64	A10	ADC10	PK2	87	
UI_MATRIX_KEYPAD_PIN_R1	65	A11	ADC11	PK3	86	
UI_MATRIX_KEYPAD_PIN_C4	66	A12	ADC12	PK4	85	
	67	A13	ADC13	PK5	84	
	68	A14	ADC14	PK6	83	
	69	A15	ADC15	PK7	82	
X Enable	38		T0	PD7	50	
UI_MATRIX_KEYPAD_PIN_R3	40		RD	PG1	52	
UI_MATRIX_KEYPAD_PIN_R2	42		PL7		42	
UI_MATRIX_KEYPAD_PIN_C3	44		OC5C	PL5	40	
Z Step	46		OC5A	PL3	38	
Z Dir	48		ICP5	PL1	36	
SD_SPI	50		MISO	PCINT3	PB3	22
SD_SPI	52		SCK	PCINT1	PB1	20



43	PD0	INT0	SCL		R3 Only
44	PD1	INT1	SDA		
93	AREF				
			GND		
26	PB7	PCINT7	OC1C	13	OC0A
25	PB6	PCINT6	OC1B	12	
24	PB5	PCINT5	OC1A	11	
23	PB4	PCINT4	OC2A	10	COOLANT_FLOOD
13	PH6	OC2B		9	COOLANT_MIST
12	PH5	OC4C		8	
16	PH4	OC4B		7	
15	PH3	OC4A		6	SPINDLE_PWM
5	PE3	AIN1	OC3A	5	SPINDLE_DIRECTION
4	PG5	OC0B		4	SPINDLE_ENABLE
7	PE5	INT5	OC3C	3	UI_ENCODER_B_PIN2
6	PE4	INT4	OC3B	2	UI_ENCODER_B_PIN1
3	PE1	TXD0		1	
2	PE0	PCINT0	RXD0	0	
64	PJ1	PCINT10	TXD3	14	X Limit Min (no Max limit)
65	PJ0	PCINT9	RXD3	15	Y Limit Min (no Max limit)
16	PH1	TXD2		16	LCD_PIN_RS
17	PH0	RXD2		17	LCD_PIN_EN
18	PD3	INT3	TXD1	18	
19	PD2	INT2	RXD1	19	Z Limit Max (no Min limit)
20	PD1	INT1	SDA	20	
21	PD0	INT0	SCL	21	



SD_CHIPSELECT	53	SS	PCINT0	PB0	19
SD_SPI	51	MOSI	PCINT2	PB2	21
SD_CARDDTECT	49	ICP4	PL0	85	
CONTROL_RESET	47	T5	PL2	87	
CONTROL_FEED_HOLD	45	OC5B	PL4	89	
CONTROL_SAFETY_DOOR	43		PL6	41	
UI_ENCODER_A_PINBTN2	41	WR	PG0	51	
	39	ALE	PG2	70	
	77	PA1	AD1	23	LCD_PIN_D4
	75	PA3	AD3	25	LCD_PIN_D5
	73	PA5	AD5	27	LCD_PIN_D6
	71	PA7	AD7	29	LCD_PIN_D7
	59	PC6	A14	31	UI_ENCODER_A_PIN2
	57	PC4	A12	33	UI_ENCODER_A_PIN1
	55	PC2	A10	35	UI_ENCODER_A_PINBTN1
	53	PC0	A8	37	BEEPER



Rotary Encoder + buttons  
 Matrix keyboard (5x5)  
 LCD connection  
 Axis spindle and endstops  
 Spindle  
 SD card SPI connection

