

Title			
Size A	Number		Revision
Date:	12/6/2012	Sheet of	
File:	C:\Users\...CC430.SchDoc	Drawn By:	

A

A

B

B

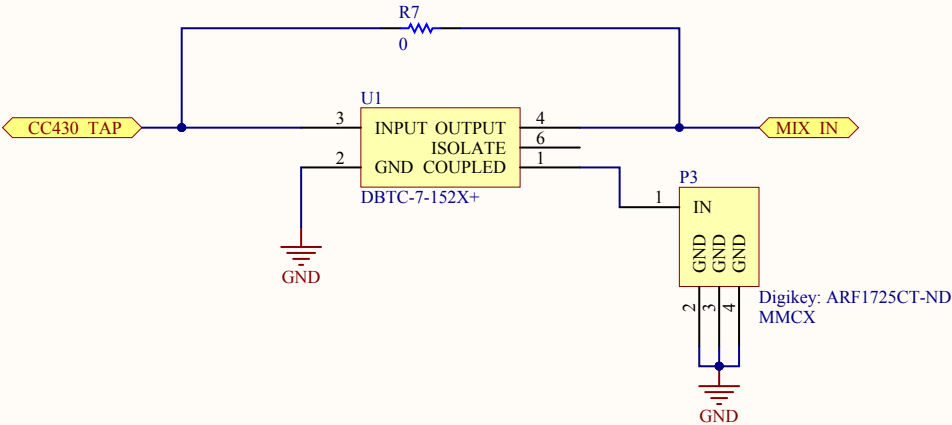
C

C

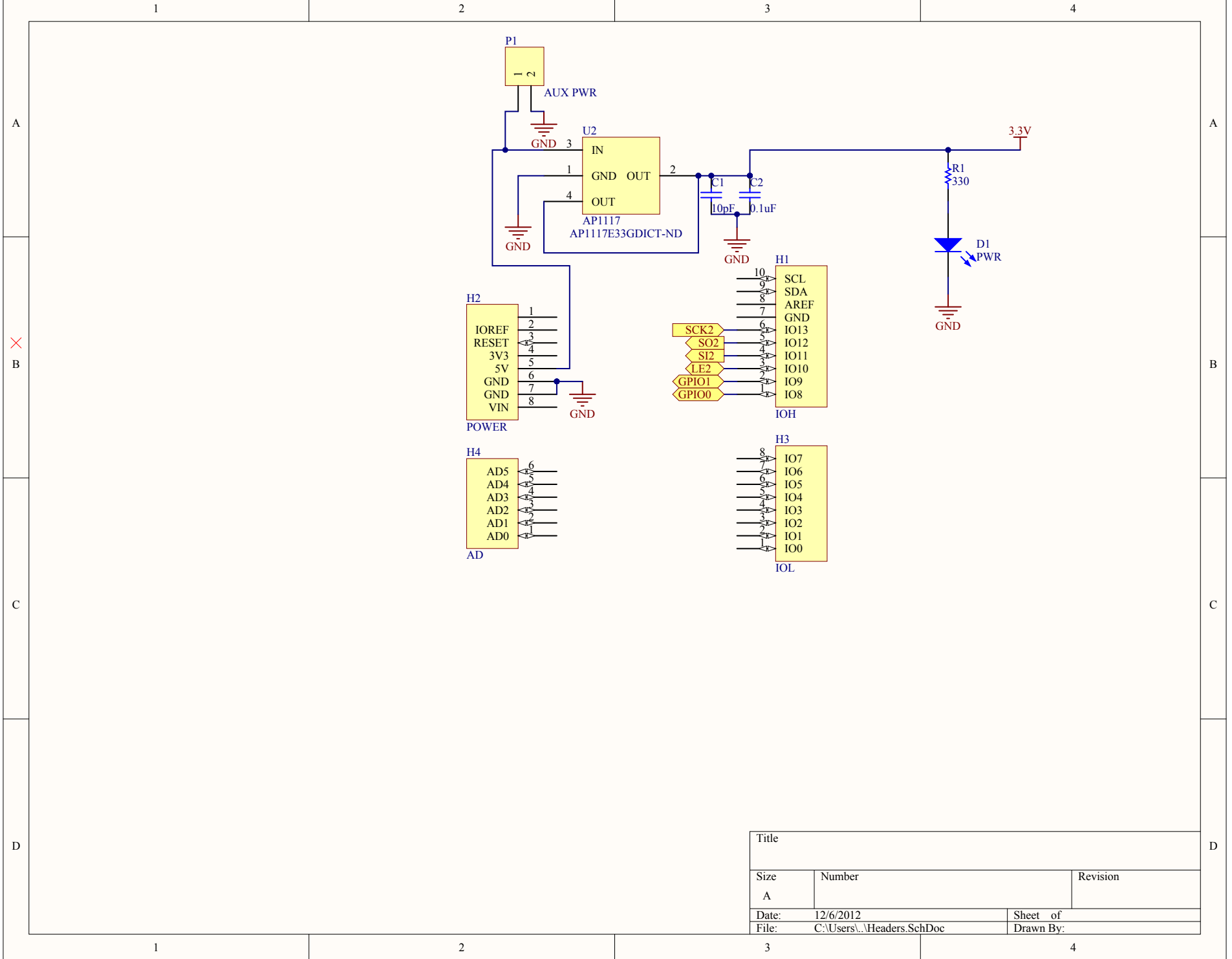
D

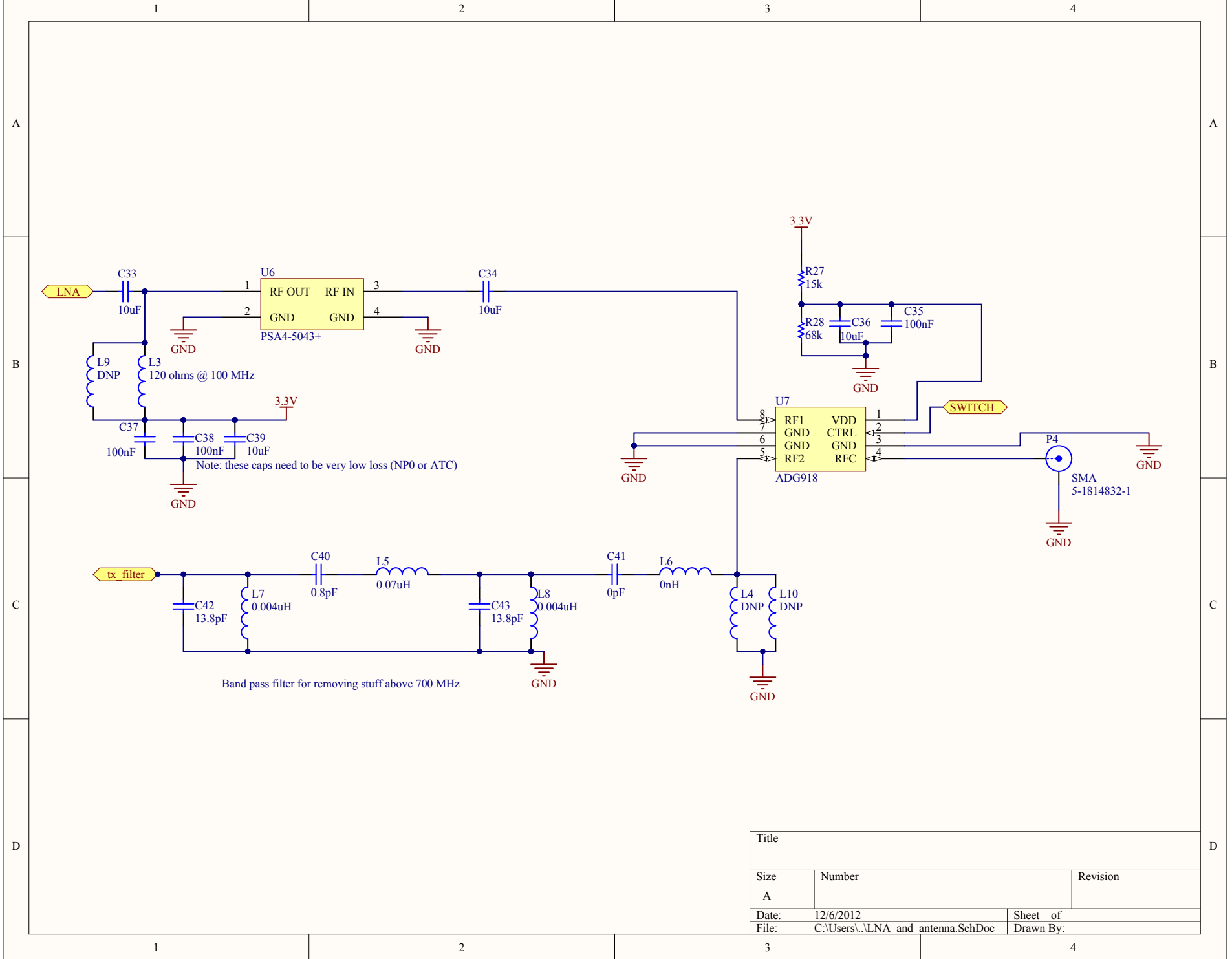
D

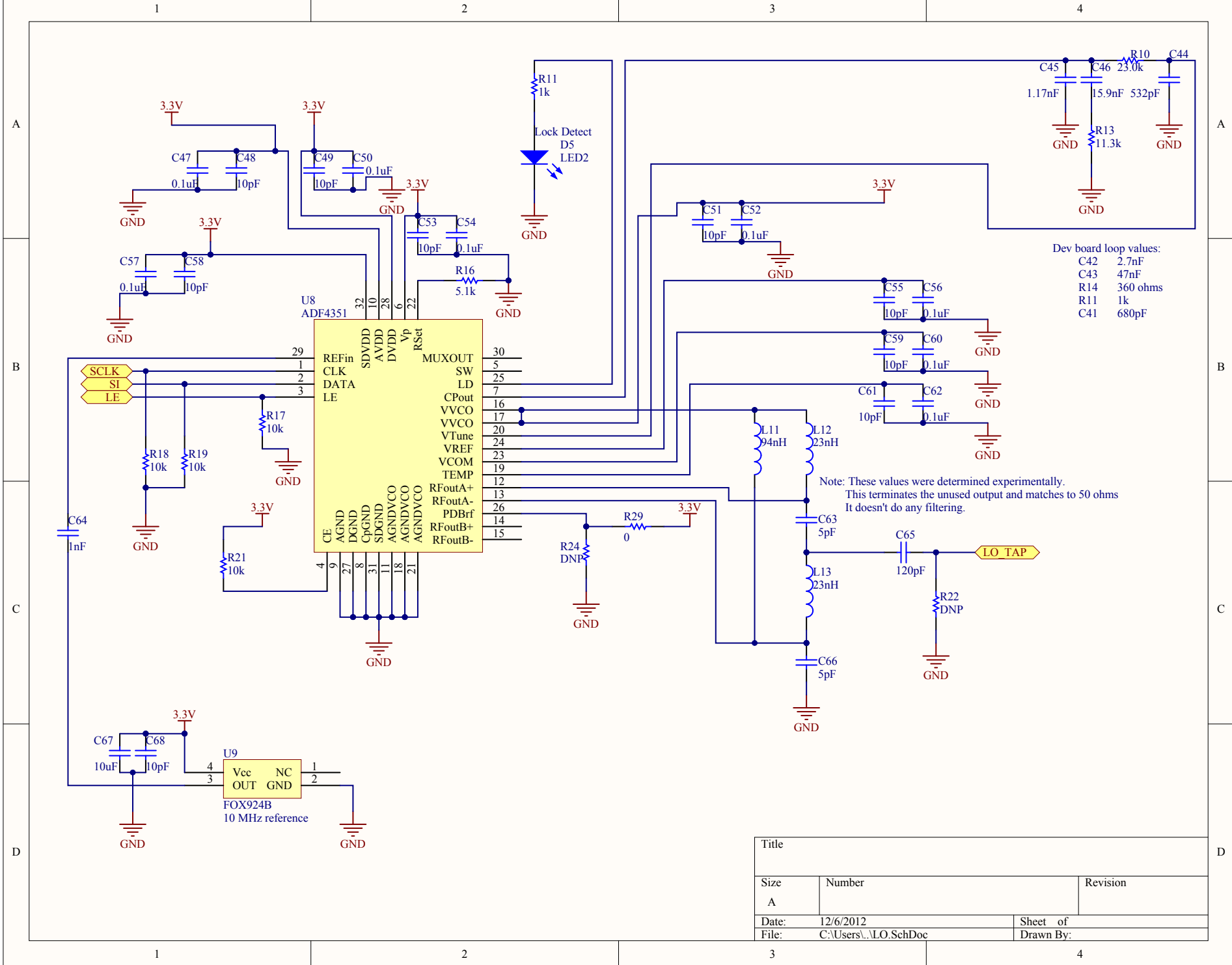
The 0 ohm resistor can be added and removed to add the directional coupler to the transmission line.  
The coupler will only be populated for testing.



Title		
Size	Number	Revision
A		
Date:	12/6/2012	Sheet of
File:	C:\Users\...\CC430 tap.SchDoc	Drawn By:

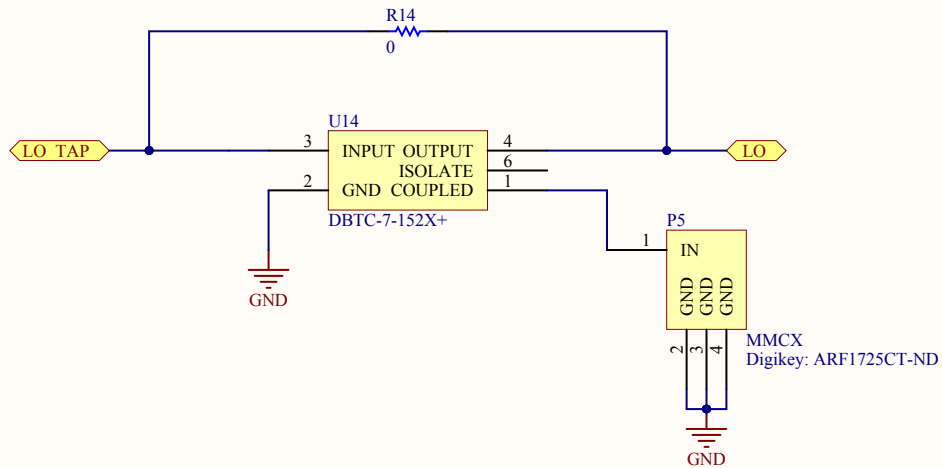






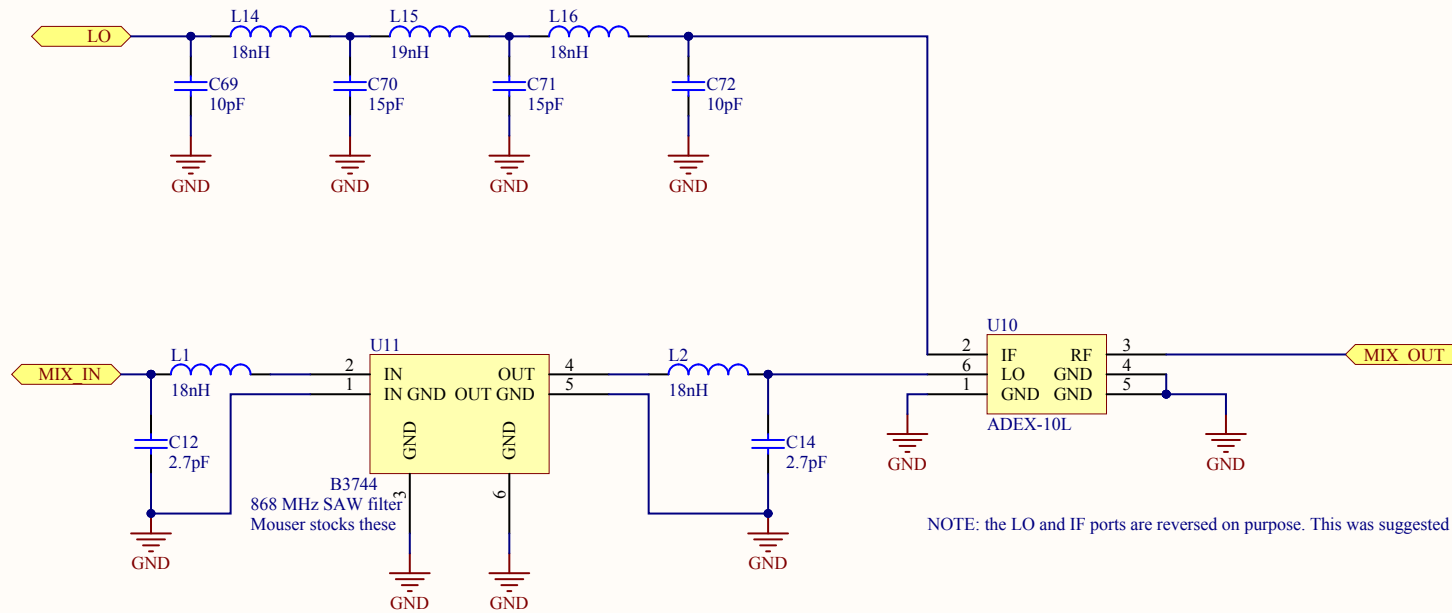
The 0 ohm resistor can be added and removed to add the directional coupler to the transmission line.

The coupler will only be populated for testing.



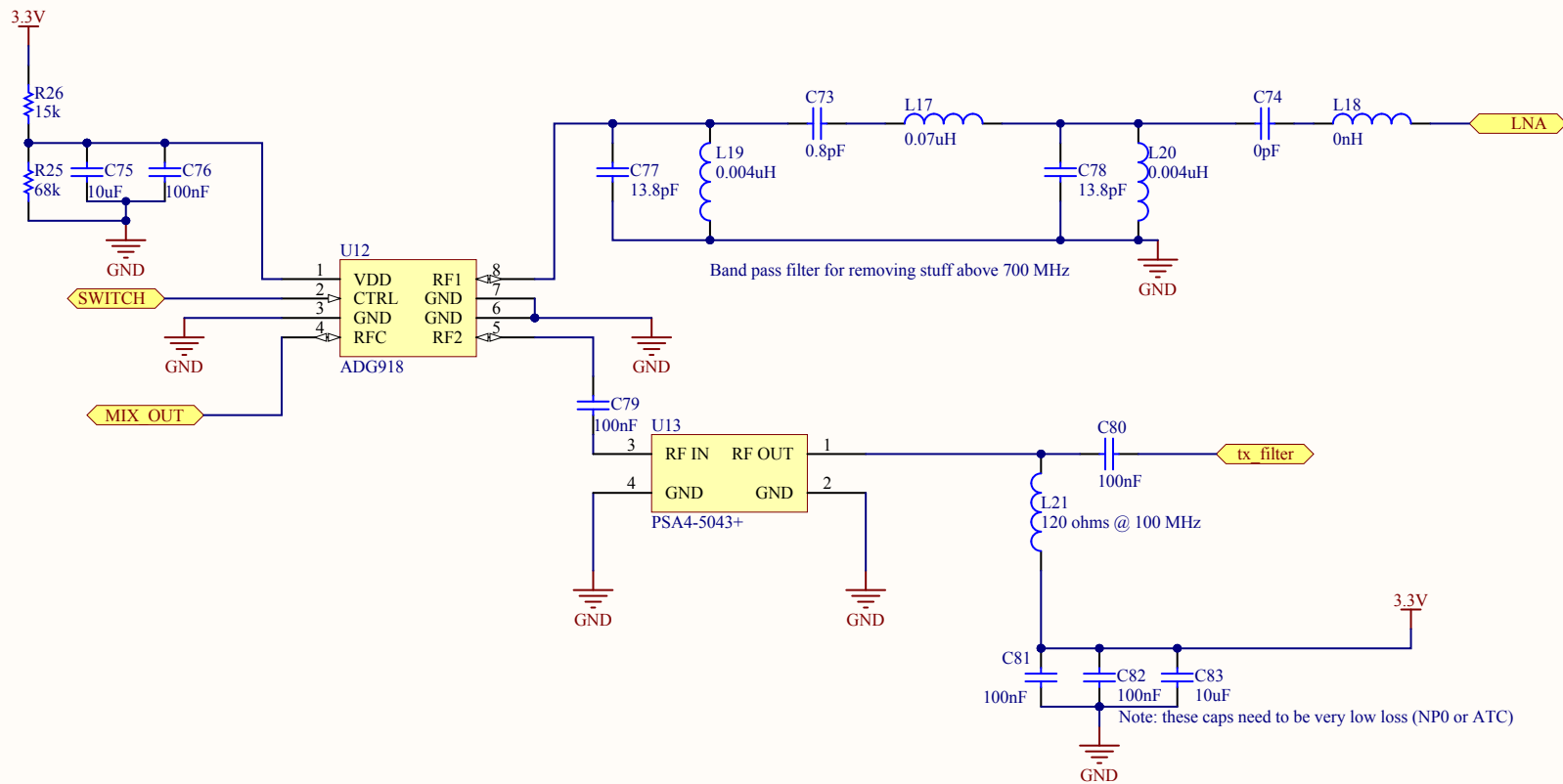
Title		
Size A	Number	Revision
Date:	12/6/2012	Sheet of
File:	C:\Users\...\LO tap.SchDoc	Drawn By:

Filter for LO harmonics



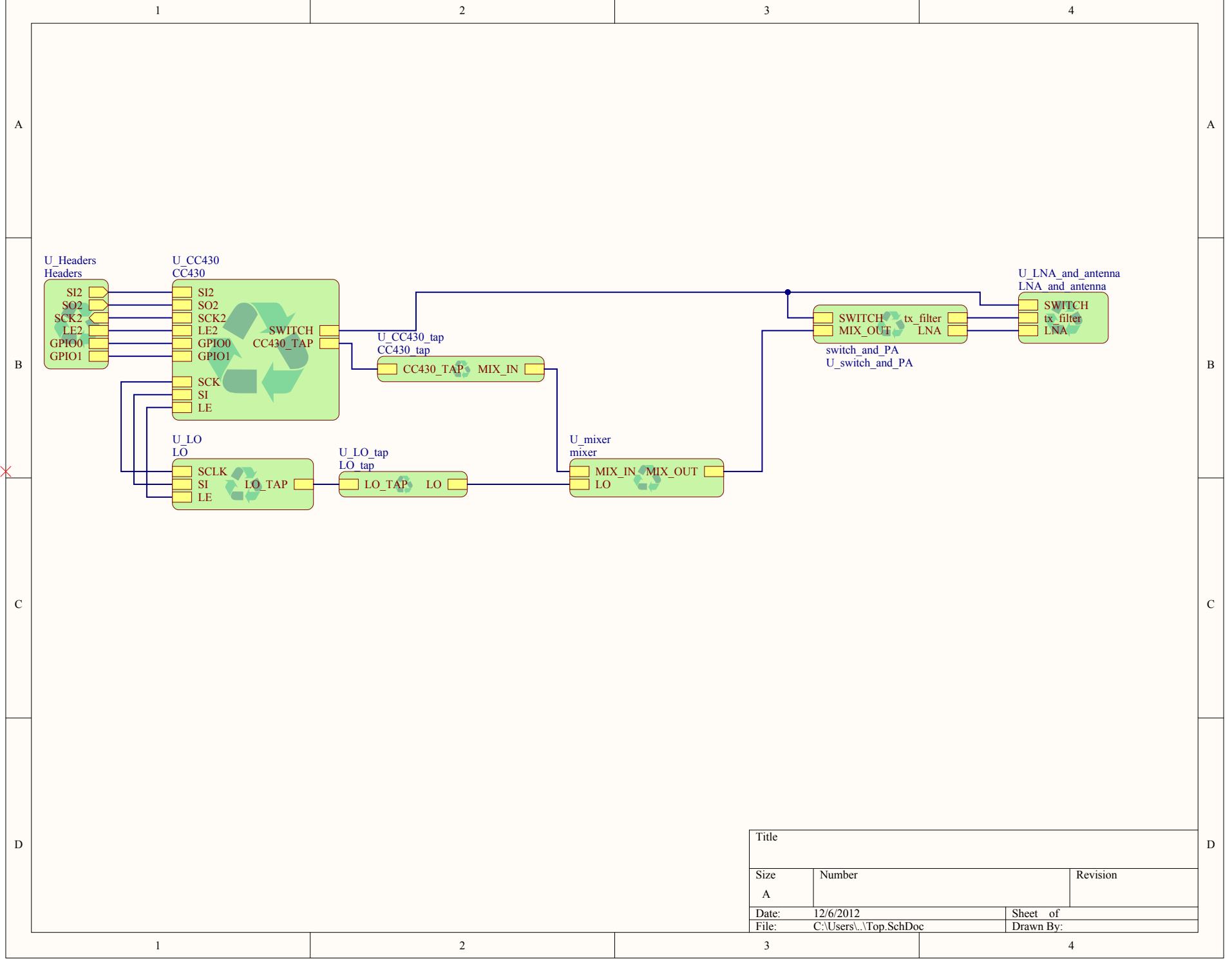
NOTE: the LO and IF ports are reversed on purpose. This was suggested by an application engineer at Minicircuits.

Title		
Size	Number	Revision
A		
Date:	12/6/2012	Sheet of
File:	C:\Users\...\mixer.SchDoc	Drawn By:



Title			
Size	Number		Revision
A			
Date:	12/6/2012		Sheet of
File:	C:\Users\...\switch and PA.SchDoc		Drawn By:





Title			
Size A	Number		Revision
Date:	12/6/2012		Sheet of
File:	C:\Users\...\Top.SchDoc		Drawn By:

Description	Designator	Footprint	LibRef	Quantity	Value
Capacitor (Semiconductor SIM Model)	C1, C48, C49, C51, C52, C55, C58, C59, C61, C68, C69, C72	0402	Cap Semi		12 10pF
Capacitor (Semiconductor SIM Model)	C2, C26, C27, C28, C30, C32, C47, C50, C52, C54, C56, C57, C60, C62	0402	Cap Semi		14 0.1uF
Capacitor (Semiconductor SIM Model)	C3, C4	0402	Cap Semi		2 27pF
Capacitor (Semiconductor SIM Model)	C5	0402	Cap Semi		1 0.0022uF
Capacitor (Semiconductor SIM Model)	C6, C7, C8, C16, C18, C21, C22, C23, C24, C35, C37, C38, C76, C79, C80, C81, C82	0402	Cap Semi		17 100nF
Capacitor (Semiconductor SIM Model)	C8, C25, C29	0402	Cap Semi		3 2pF
Capacitor (Semiconductor SIM Model)	C10, C17, C19, C20, C33, C34, C36, C39, C87, C78, C83	0402	Cap Semi		11 10uF
Capacitor (Semiconductor SIM Model)	C11	0402	Cap Semi		1 100pF
Capacitor (Semiconductor SIM Model)	C12, C14	0402	Cap Semi		2 2.7pF
Capacitor (Semiconductor SIM Model)	C13	0402	Cap Semi		1 470nF
Capacitor (Semiconductor SIM Model)	C15	0402	Cap Semi		1 DNP
Capacitor (Semiconductor SIM Model)	C31	0402	Cap Semi		1 2.0pF
Capacitor (Semiconductor SIM Model)	C40, C73	0402	Cap Semi		2 0.8pF
Capacitor (Semiconductor SIM Model)	C41, C74	0402	Cap Semi		2 0pF
Capacitor (Semiconductor SIM Model)	C42, C43, C77, C78	0402	Cap Semi		4 13.8pF
Capacitor (Semiconductor SIM Model)	C44	0402	Cap Semi		1 532pF
Capacitor (Semiconductor SIM Model)	C45	0402	Cap Semi		1 1.17nF
Capacitor (Semiconductor SIM Model)	C46	0402	Cap Semi		1 15.8nF
Capacitor (Semiconductor SIM Model)	C63, C66	0402	Cap Semi		2 5pF
Capacitor (Semiconductor SIM Model)	C64	0402	Cap Semi		1 1nF
Capacitor (Semiconductor SIM Model)	C65	0402	Cap Semi		1 120pF
Capacitor (Semiconductor SIM Model)	C70, C71	0402	Cap Semi		2 15pF
typical RED, GREEN, YELLOW, AMBER GaAs LED	D1, D2, D3, D4	0603	LED2		4
typical RED, GREEN, YELLOW, AMBER GaAs LED	D5	0603	LED2		1
	H1	Header 10x1 8.5mm	IC01		1
	H2	Header 8x1 8.5mm	POWER		1
	H3	Header 8x1 8.5mm	OL		1
	H4	Header 6x1 8.5mm	AD		1
Inductor	L1, L2, L14, L16	0402	Inductor		4 18nH
Inductor	L3, L21	0402	Inductor		2 120 ohms @ 100 MHz
Inductor	L4, L5, L10	0402	Inductor		3 DNP
Inductor	L5, L17	0402	Inductor		2 0.07uH
Inductor	L6, L18	0402	Inductor		2 0nH
Inductor	L7, L8, L19, L20	0402	Inductor		4 0.004uH
Inductor	L11	0402	Inductor		1 94nH
Inductor	L12, L13	0402	Inductor		2 23nH
Inductor	L15	0402	Inductor		1 19nH
Header, 2-Pin	P1	HDR1X2	Header 2		1
	P2		tag-connect		1
	P3, P5		MMCX		2
SMB Straight Connector	P4	SMB_V-RJ45	SMB		1
Semiconductor Resistor	R1, R2, R3, R4	0402	Res Semi		4 330
Semiconductor Resistor	R5	0402	Res Semi		1 47k
Semiconductor Resistor	R6	0402	Res Semi		1 56k, 1%
Semiconductor Resistor	R7, R14, R28	0402	Res Semi		3 0
Semiconductor Resistor	R10	0402	Res Semi		1 23.0k
Semiconductor Resistor	R11	0402	Res Semi		1 1k
Semiconductor Resistor	R13	0402	Res Semi		1 11.3k
Semiconductor Resistor	R16	0402	Res Semi		1 5.1k
Semiconductor Resistor	R17, R18, R19, R21	0402	Res Semi		4 10k
Semiconductor Resistor	R22, R24	0402	Res Semi		2 DNP
Semiconductor Resistor	R25, R26	0402	Res Semi		2 68k
Semiconductor Resistor	R26, R27	0402	Res Semi		2 15k
	U1, U14		DBTC7-T52X+		2
	U2		AP1117		1
	U3		CC30F5137		1
	U4		reset button		1
Balun	U5		0896BM15A0001		1
LNA	U6, U13		PSA4-5043+		2
RF Switch	U7, U12	ADG918	ADG918		2
VCO	U8	QFN50P500X500-32VIN	ADF4350		1
	U9	FOX924	FOX924		1
Passive Mixer	U10		ADEX-10L		1
	U11		B3744		1
	Y1		NX3225GA-260MHz-T1		1