

Decapede

Arduino Mega 2560 based stepstick control device

Sheet: Main



File: main.sch

Sheet: Power



File: Power.sch

Sheet: Stepstick



File: Stepstick.sch

Sheet: Endstops



File: Endstops.sch

Sheet: FET Drivers



File: FET_Drivers.sch

Sheet: FET PWM Drivers



File: FET_PWM_Drivers.sch

Sheet: More FET drivers



File: FET_Drivers_2.sch

Sheet: Thermistors



File: Thermistors.sch

Sheet: SD Card Interface



File: SD_Card.sch

Designer and Principal: Michael Armani (Reprap user Simba)

Designer: David Jones

Electronics Designer 1: Am Miram

Electronics Designer 2: Miroslav Mrdjan

Naming the device: Reprap user Ugen

Drawing by: Bob Cousins (bobc)

License: GPL

Armani Creations

File: Decapede.sch

Sheet: /

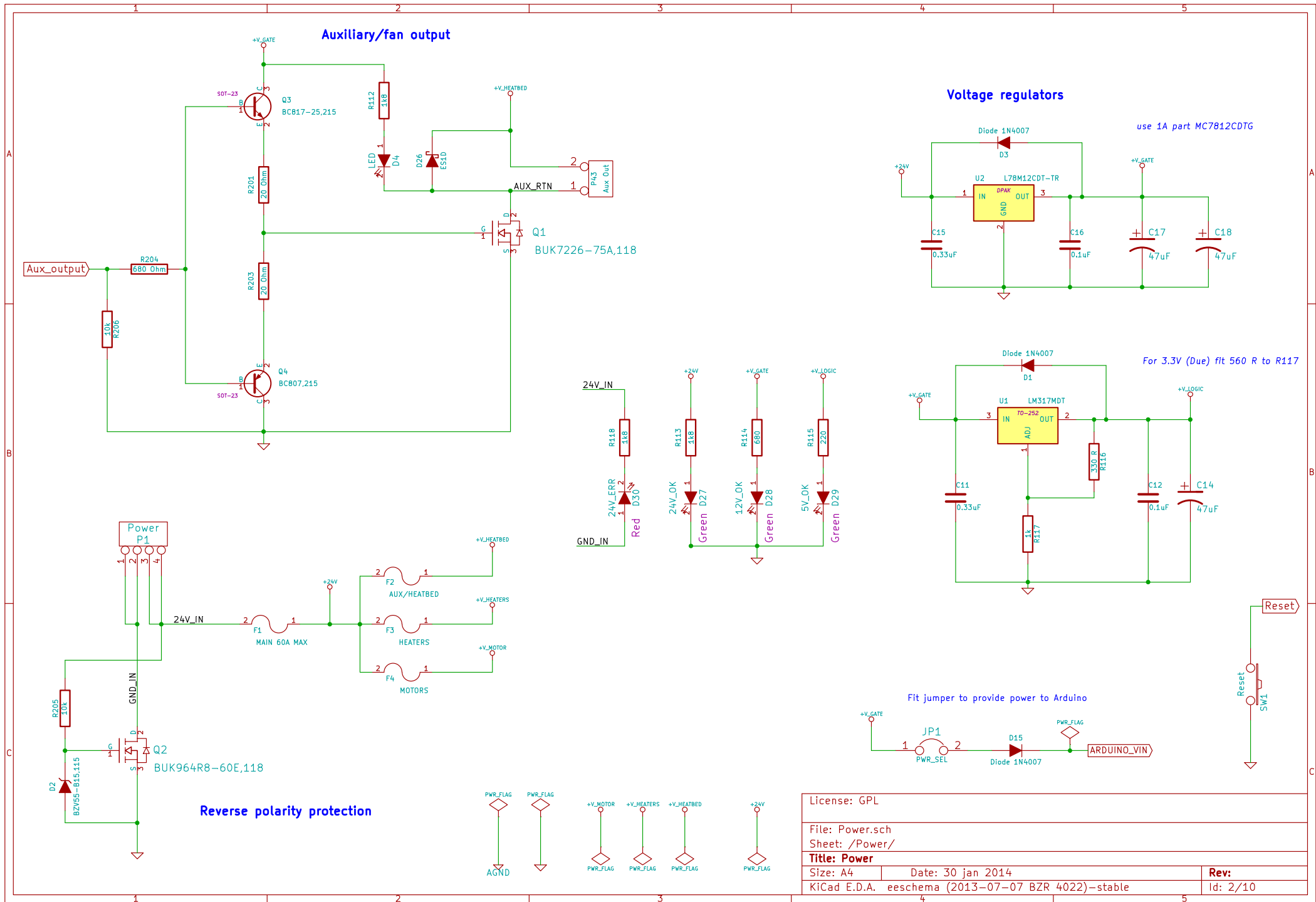
Title: Decapede

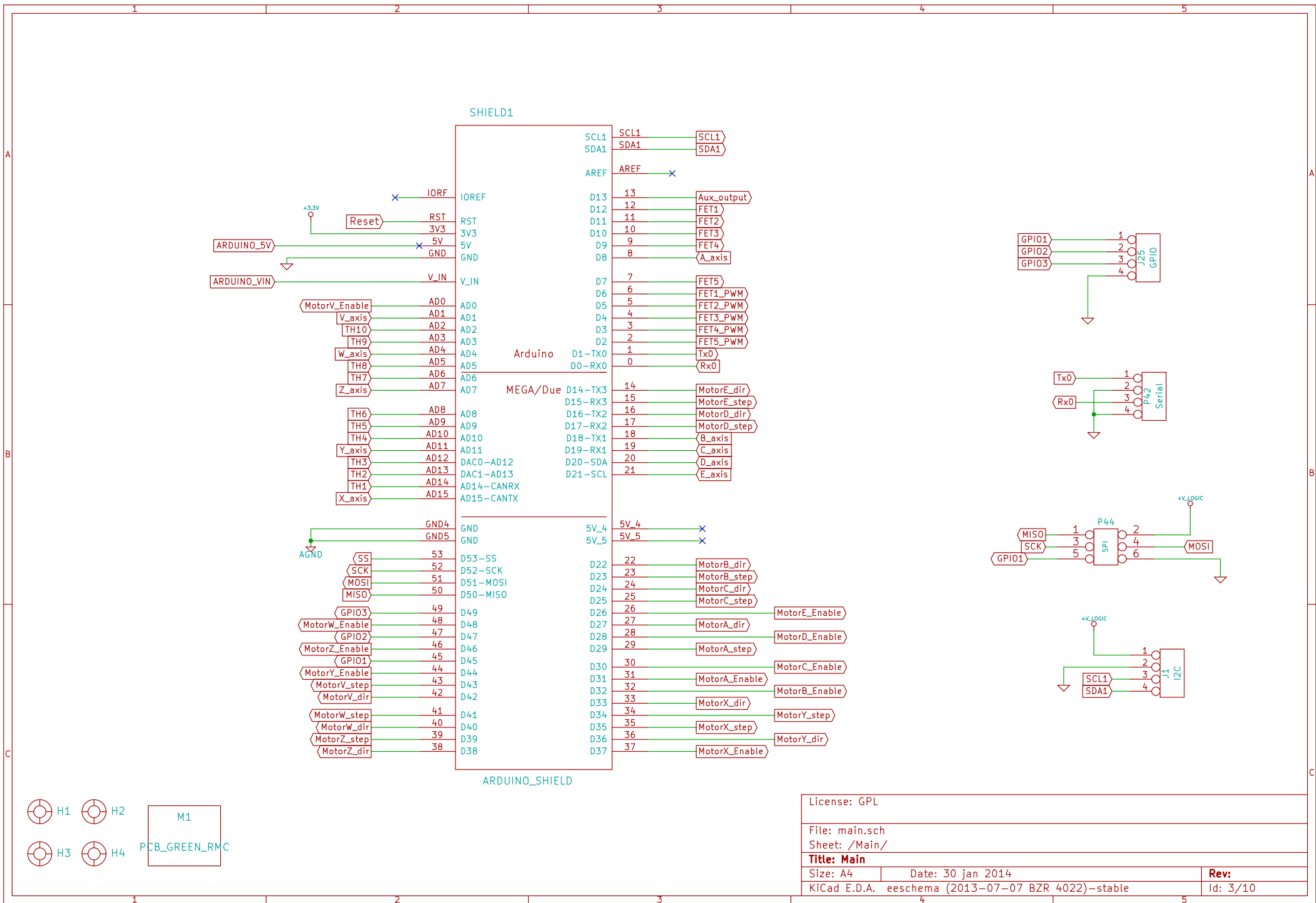
Size: A4 Date: 30 jan 2014

KiCad E.D.A. eeschema (2013-07-07 BZR 4022)-stable

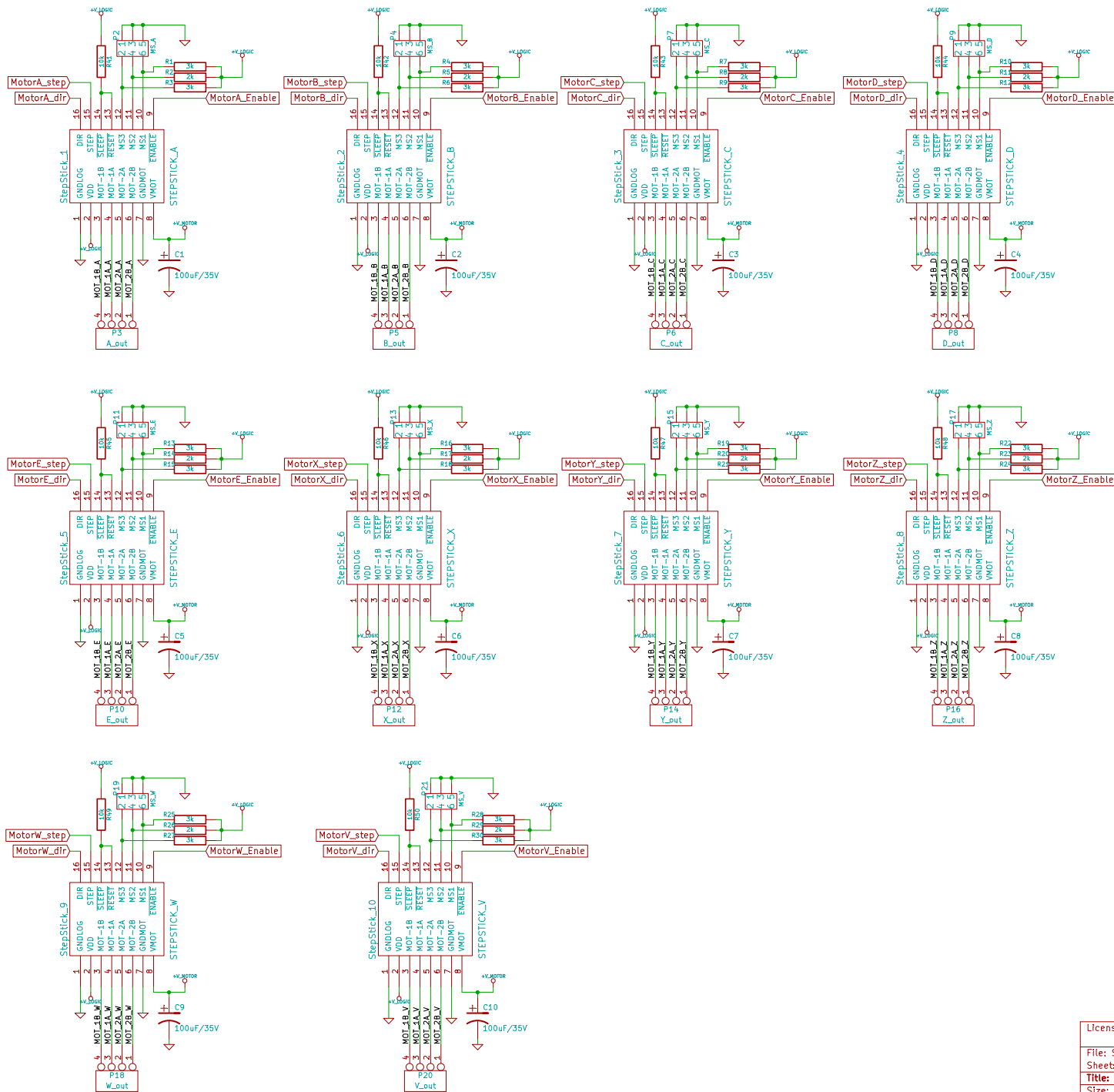
Rev:

Id: 1/10





License: GPL	
File: main.sch	
Sheet: /Main/	
Title: Main	
Size: A4	Date: 30 jan 2014
KiCad E.D.A. eeschema (2013-07-07 BZR 4022)-stable	
Rev: Id: 3/10	



License: GPL

File: Stepstick.sch

Sheet: /Stepstick/

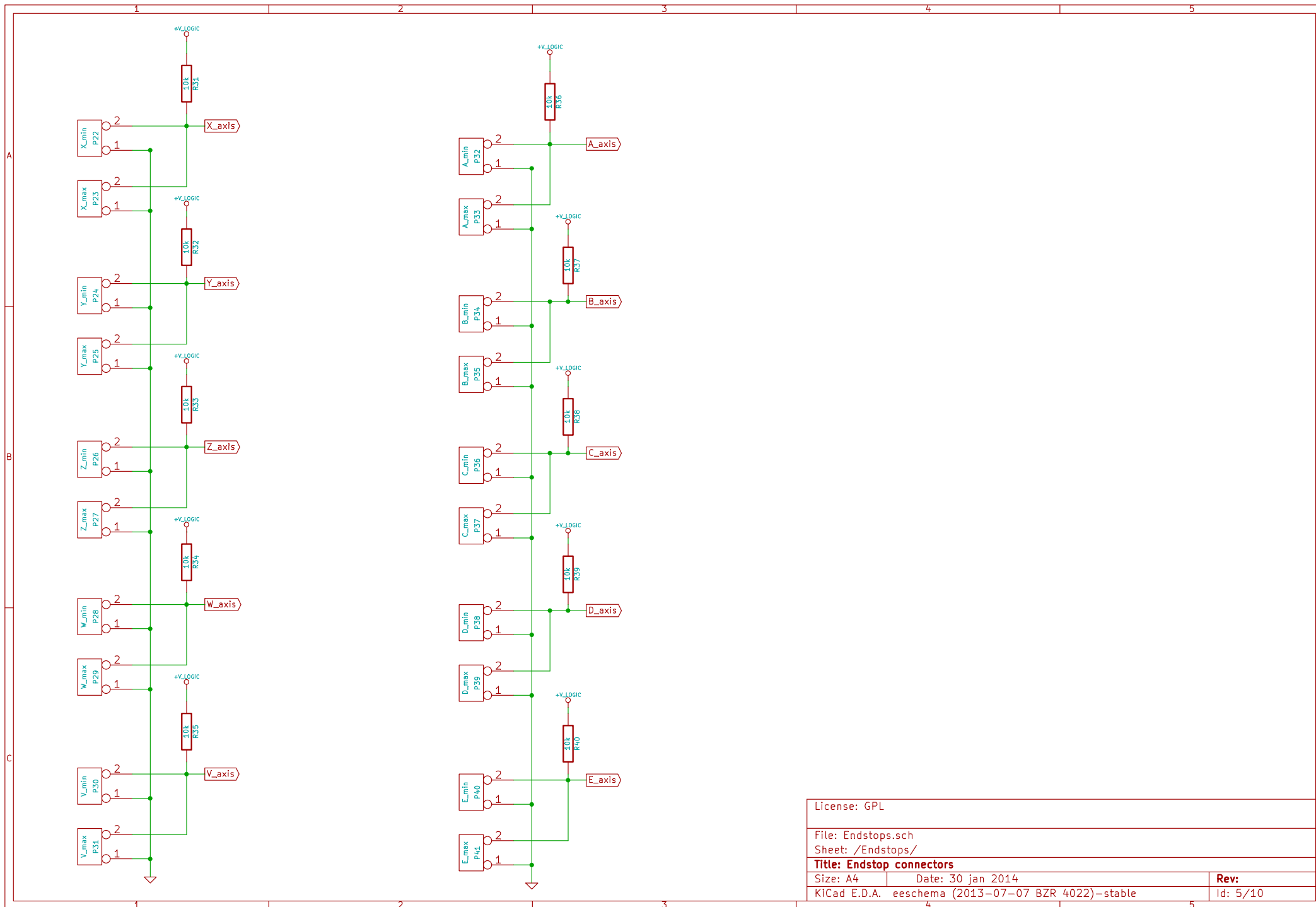
Title: Stepstick connectors

Size: A3 Date: 30 jan 2014

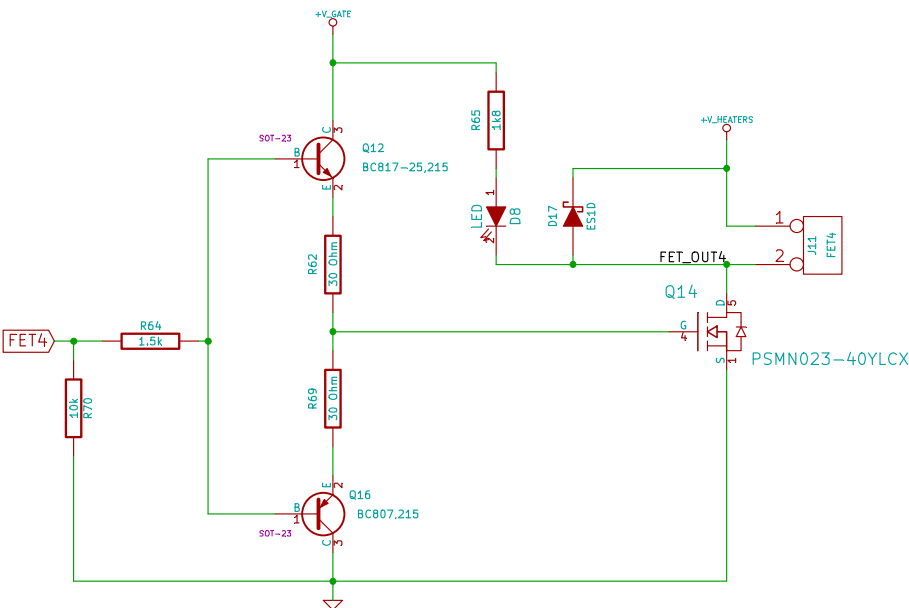
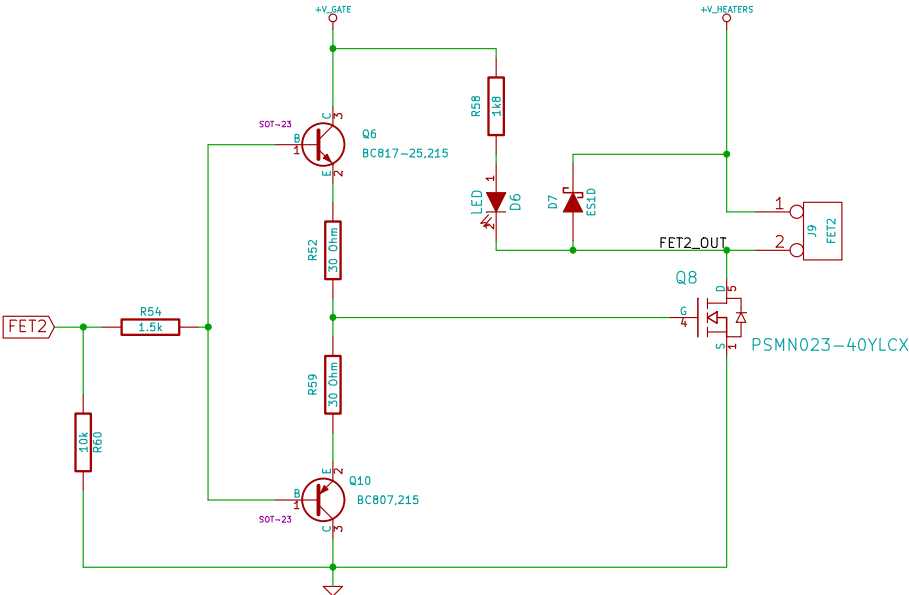
KiCad E.D.A. eeschema (2013-07-07 BZR 4022)-stable

Rev:

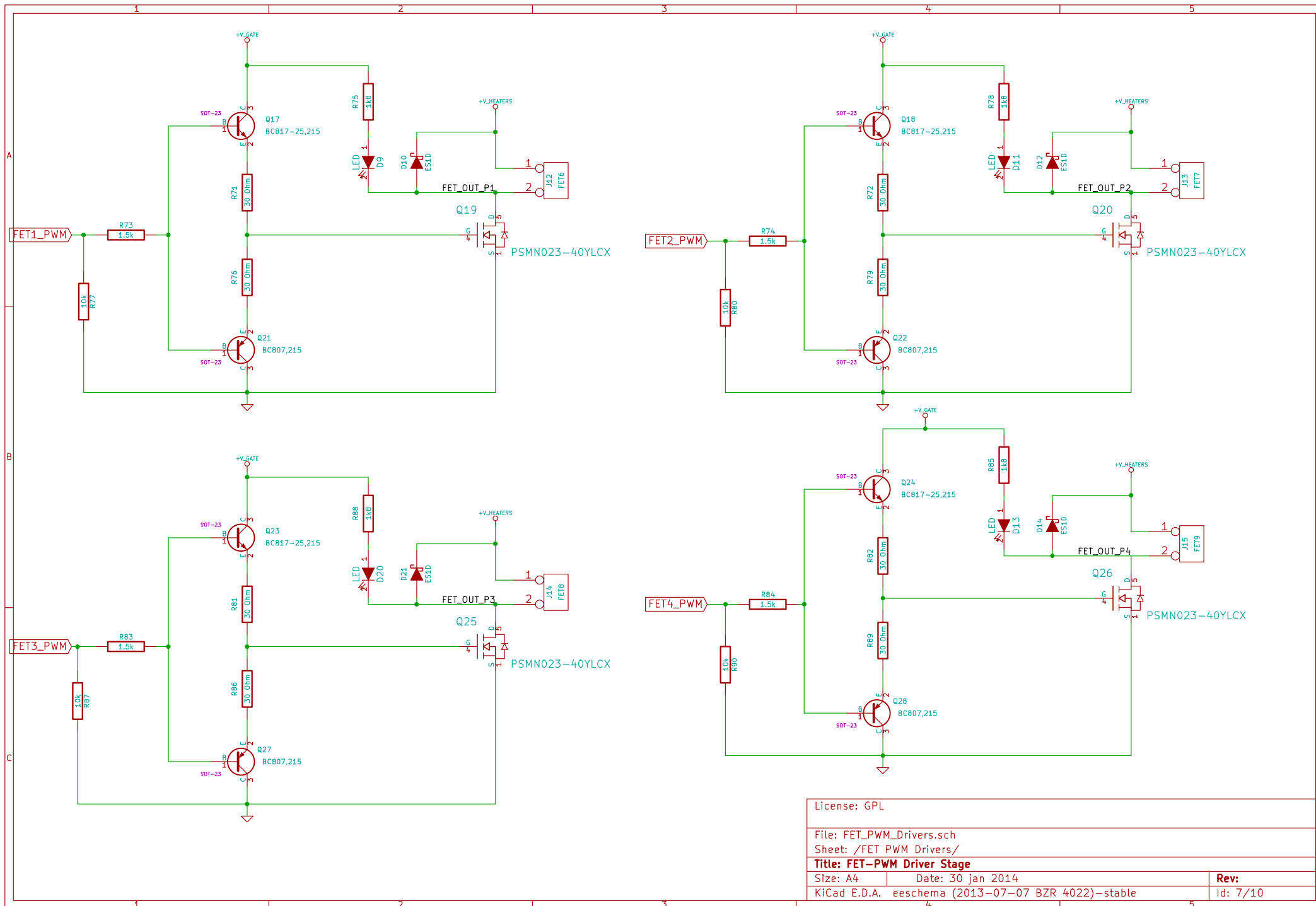
Id: 4/10



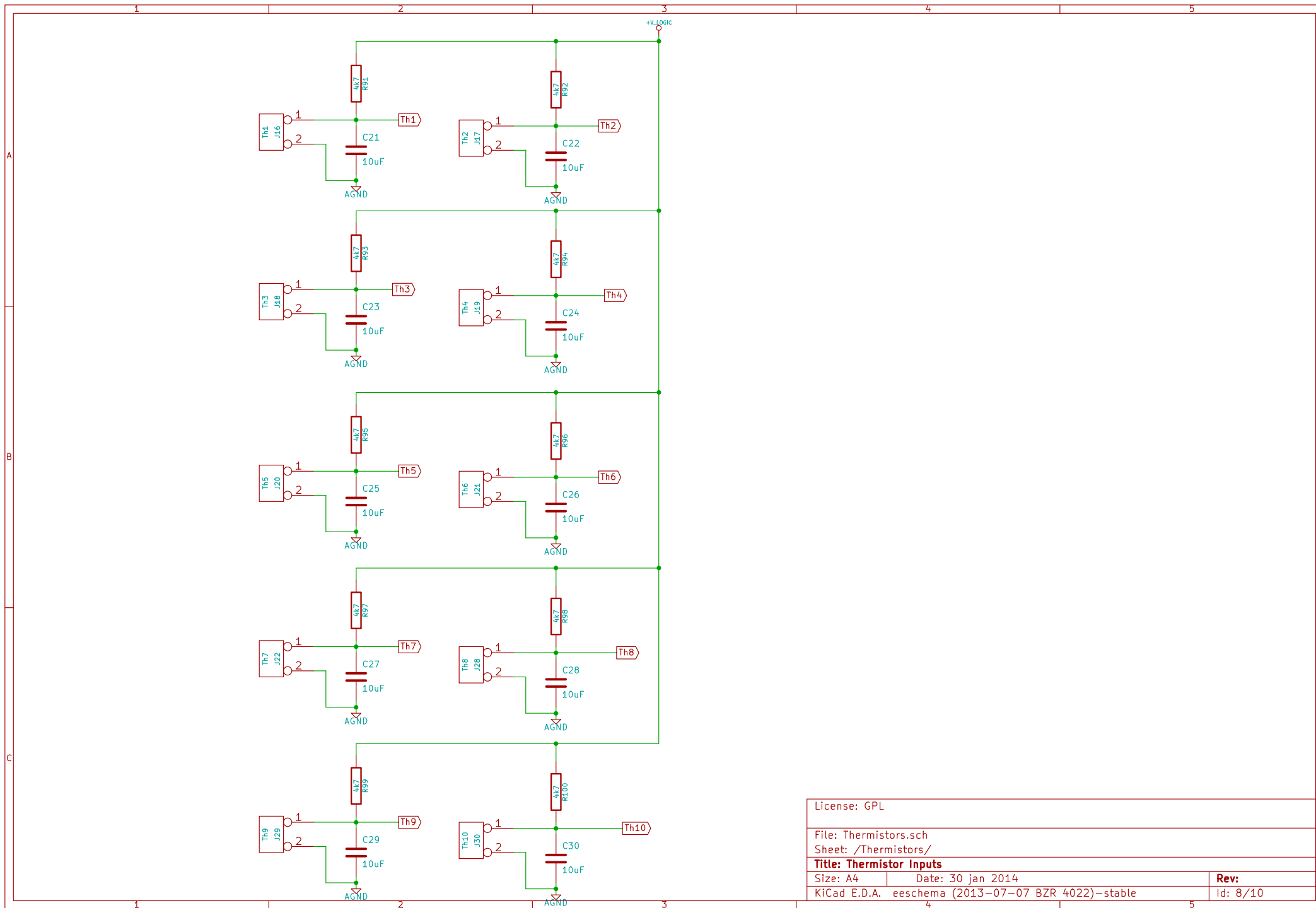
License: GPL		
File: Endstops.sch		
Sheet: /Endstops/		
Title: Endstop connectors		
Size: A4	Date: 30 jan 2014	Rev:
KiCad E.D.A. eeschema (2013-07-07 BZR 4022)-stable		Id: 5/10



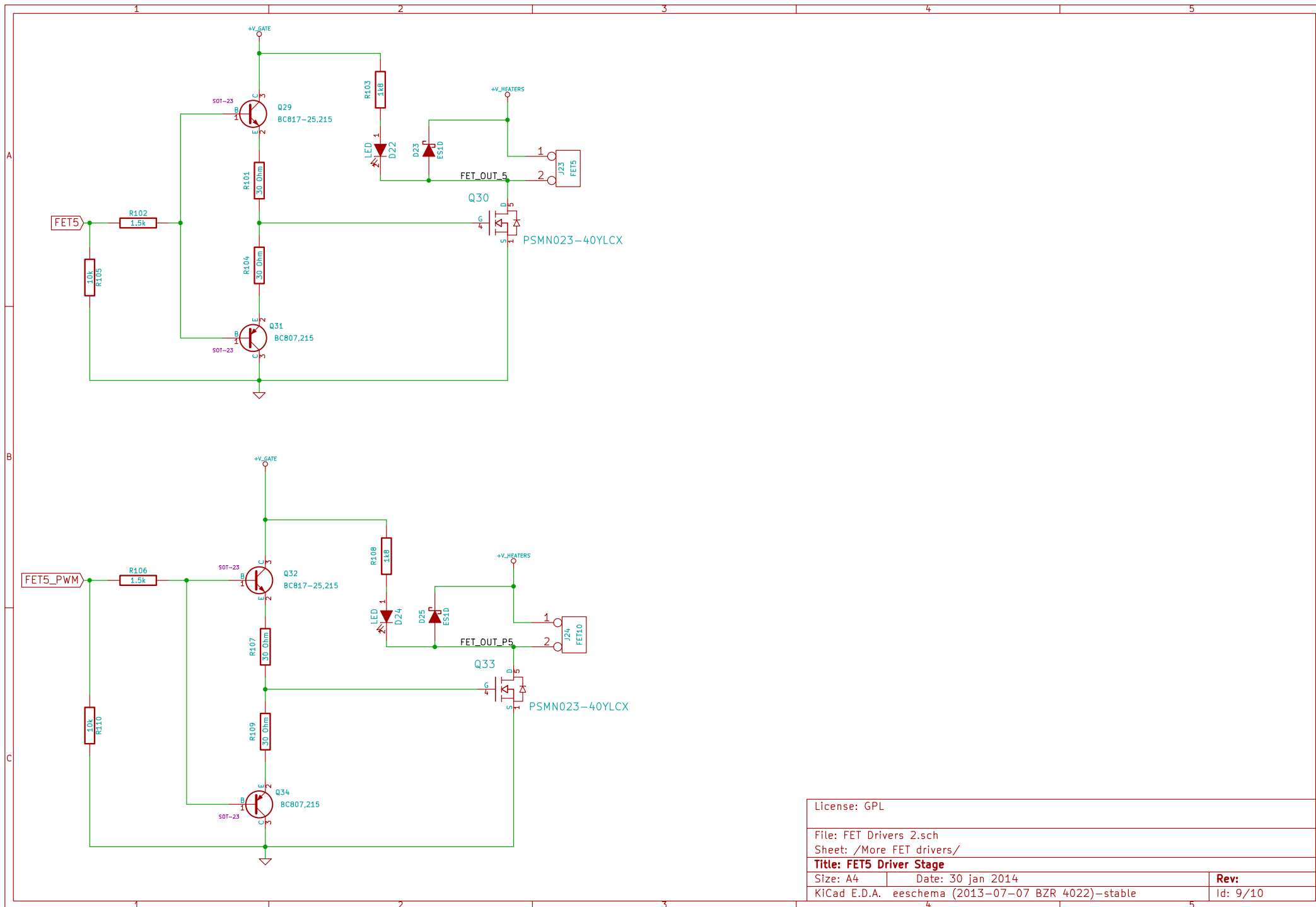
Id: 6/10



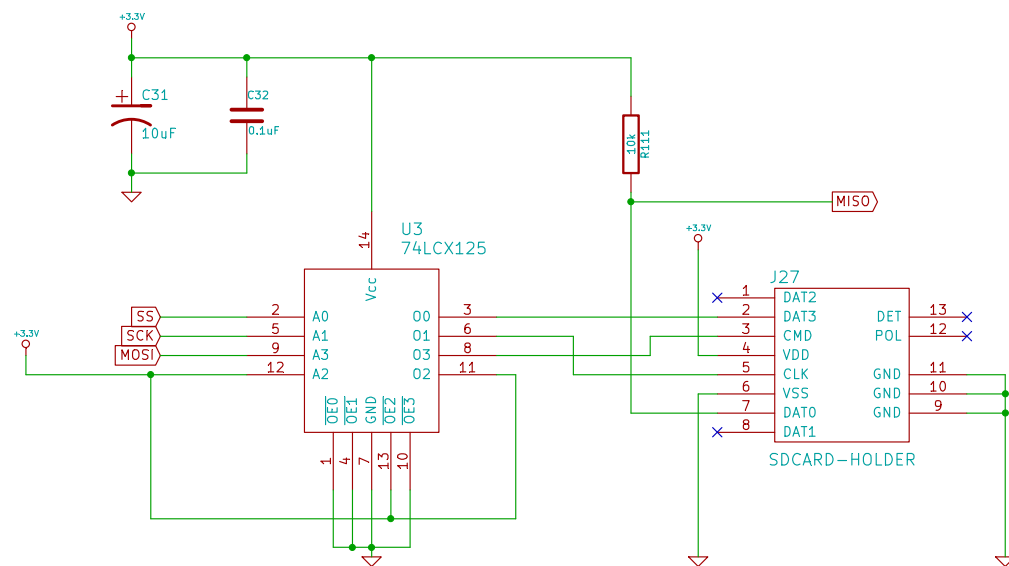
License: GPL	
File: FET_PWM_Drivers.sch	
Sheet: /FET PWM Drivers/	
Title: FET-PWM Driver Stage	
Size: A4	Date: 30 jan 2014
KiCad E.D.A. eschema (2013-07-07 BZR 4022)-stable	
Rev: Id: 7/10	



License: GPL		
File: Thermistors.sch		
Sheet: /Thermistors/		
Title: Thermistor Inputs		
Size: A4	Date: 30 jan 2014	Rev:
KiCad E.D.A. eeschema (2013-07-07 BZR 4022)-stable		Id: 8/10



License: GPL		
File: FET Drivers 2.sch		
Sheet: /More FET drivers/		
Title: FET5 Driver Stage		
Size: A4	Date: 30 jan 2014	Rev:
KiCad E.D.A. eeschema (2013-07-07 BZR 4022)-stable		Id: 9/10



License: GPL		
File: SD_Card.sch		
Sheet: /SD Card Interface/		
Title: SD Card Interface		
Size: A4	Date: 30 jan 2014	Rev:
KiCad E.D.A. eeschema (2013-07-07 BZR 4022)-stable		Id: 10/10