



nabstract.io
abstract learn apply

Analysis of Edge Services 3GPP EdgeApp in GSMA OP/ Camara

Babu Narayanan, Nabstract

Date: 23 May 2023

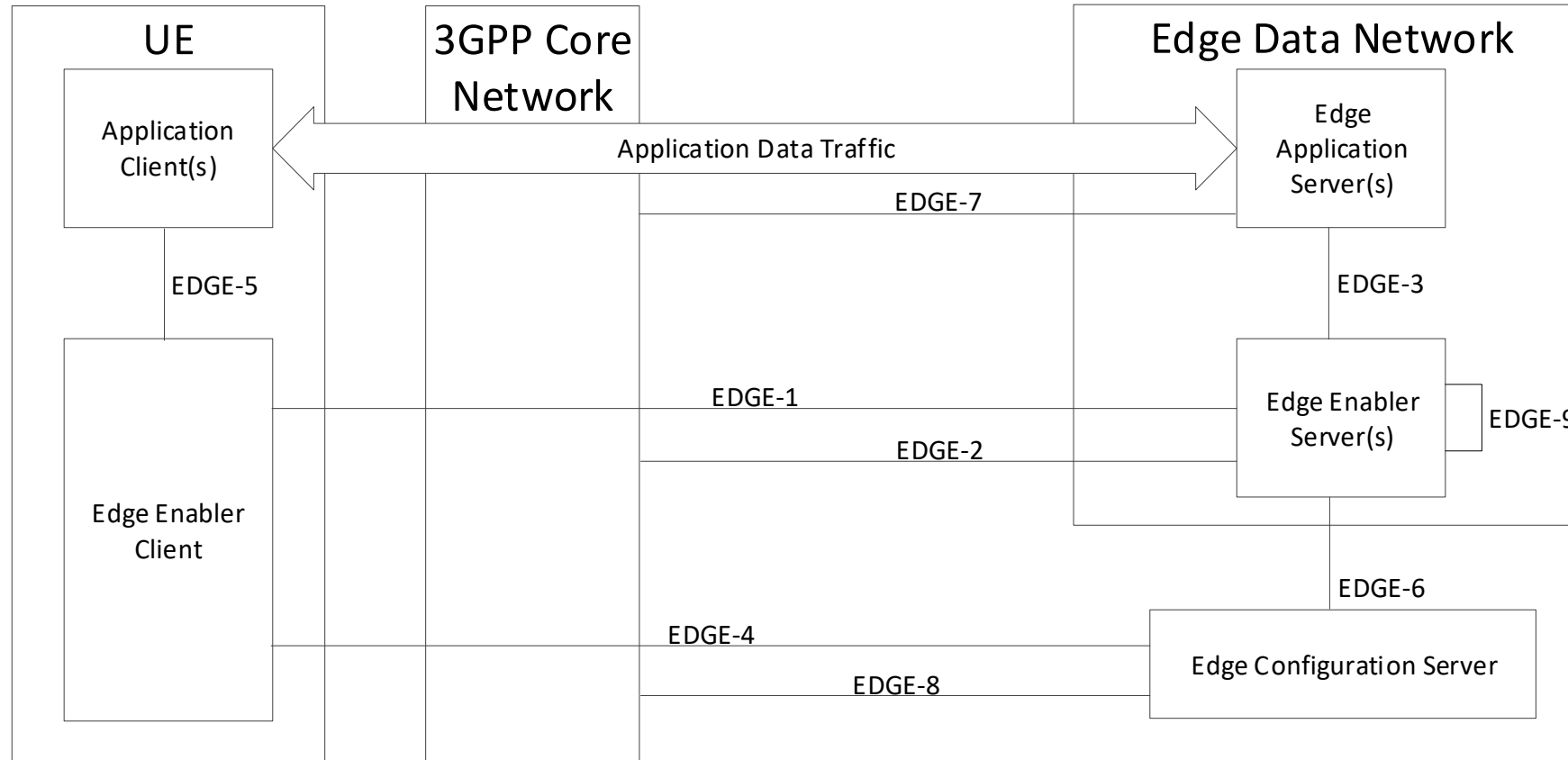
Summary

- Edge Services have been defined in 3GPP as part of the EdgeApp framework.
- Operator Platform Telco Edge Requirements have been defined by GSMA.
- The question put up for discussion here is:

While Camara is defining the Edge Services primarily based on the Telco Edge Requirements defined by GSMA, how can these service definitions take inputs and leverage from the work done in 3GPP.

Architecture for enabling edge applications

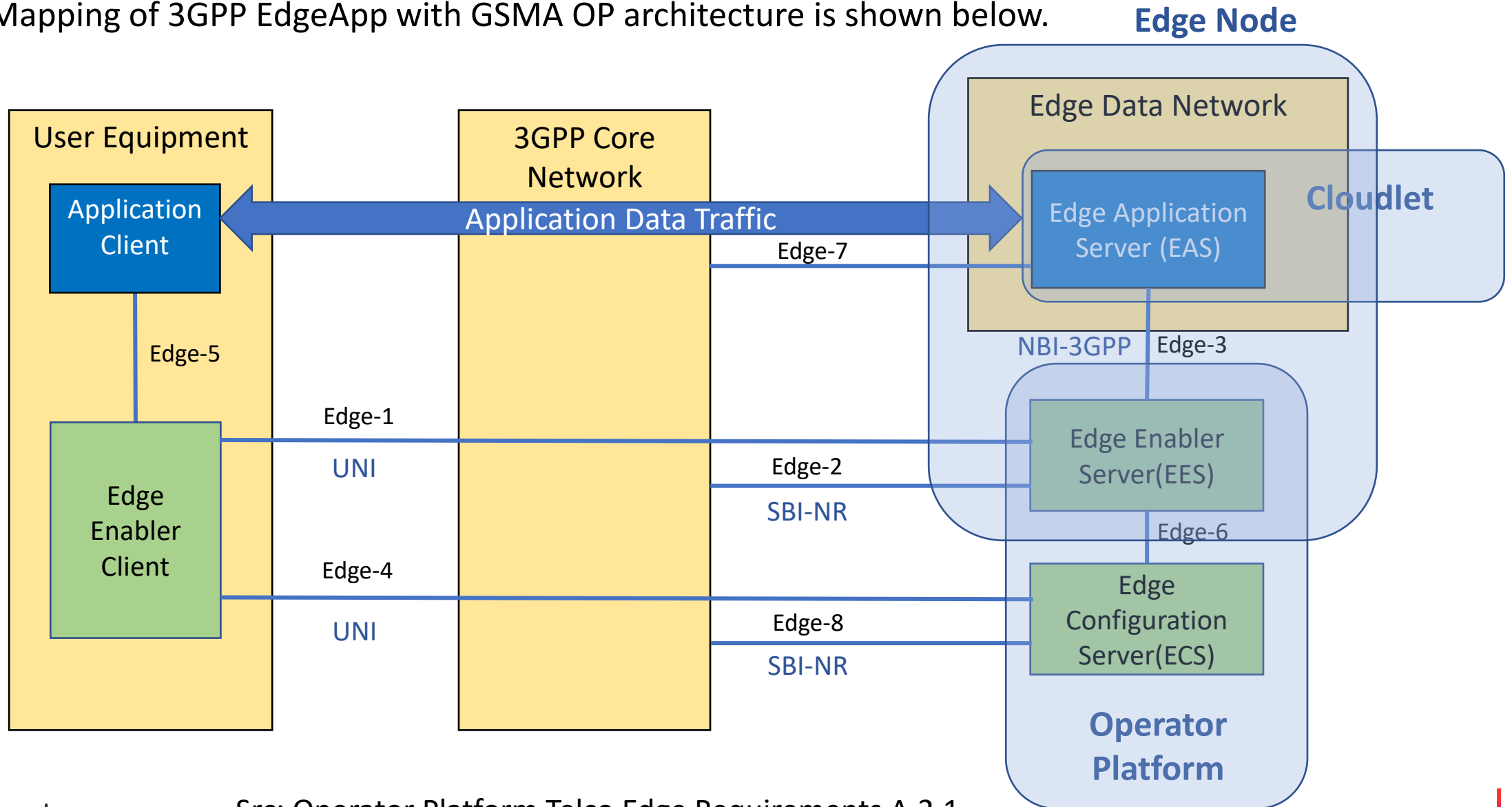
The Reference point representation of EdgeApp Architecture from 3GPP is shown below.



Src: 3GPP TS 23.558

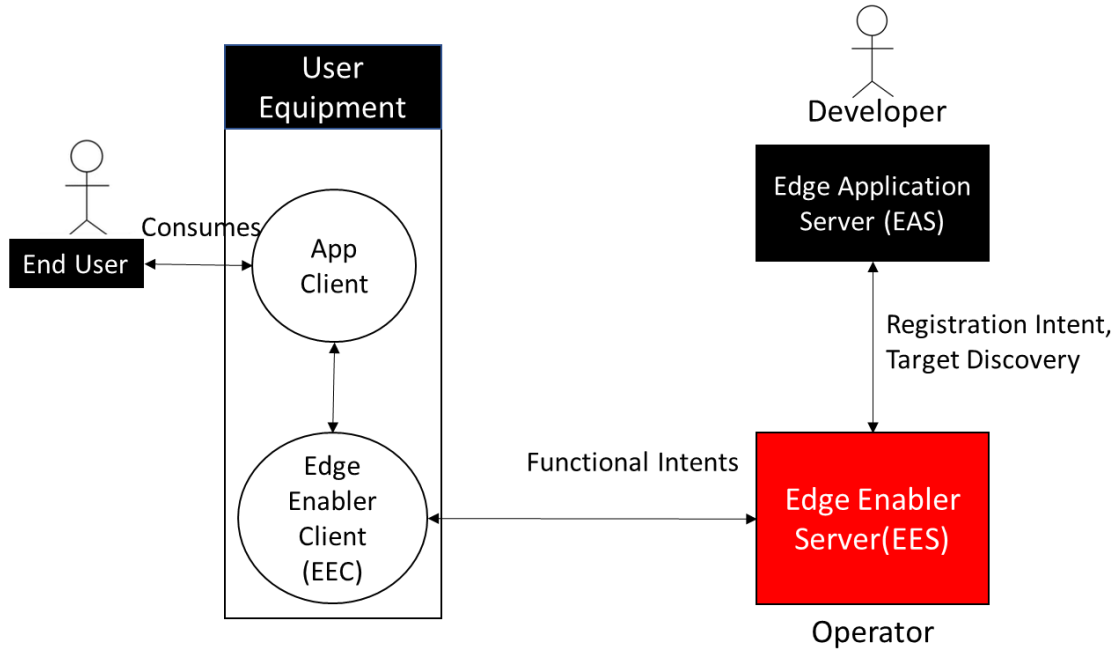
Mapping of 3GPP EdgeApp to GSMA OP

The Mapping of 3GPP EdgeApp with GSMA OP architecture is shown below.

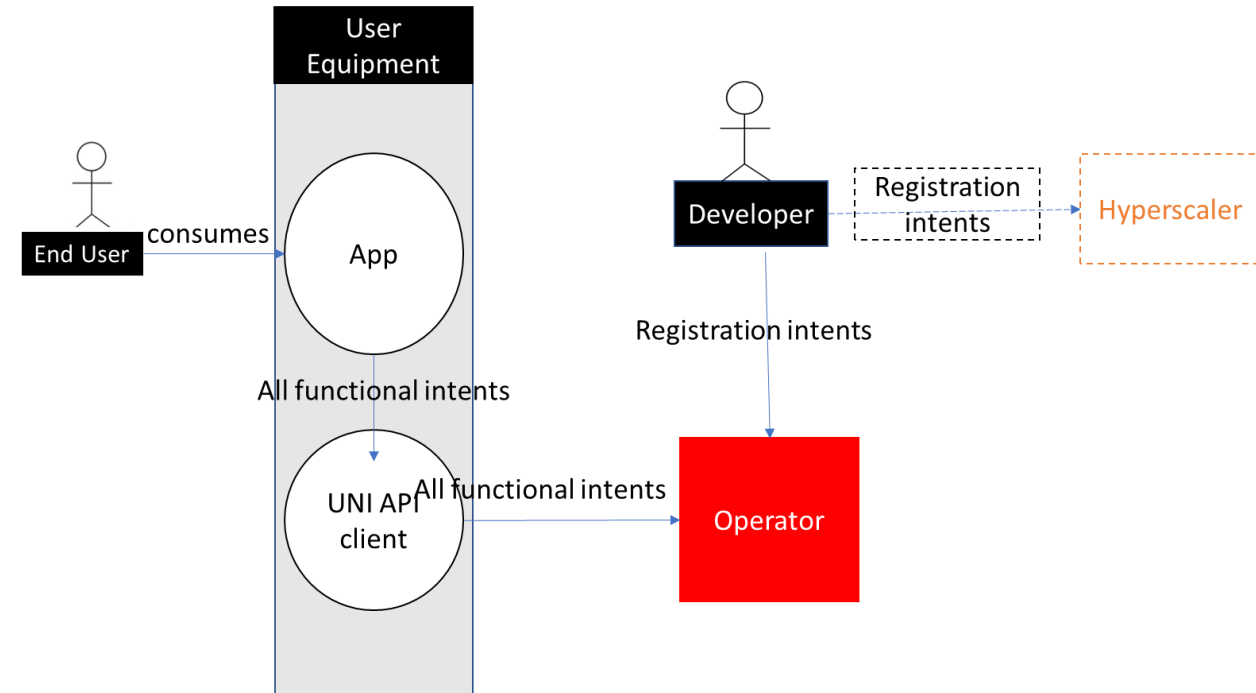


3GPP EdgeApp model v/s GSMA Edge Cloud Model

3GPP EdgeApp model



GSMA/EdgeXR model



OP UNI Interfaces based on 3GPP EdgeApp

OP UNI APIs are primarily derived from the EDGEAPP APIs presented in 3GPP specifications TS 23.558, TS 29.558 and TS 24.558 as specified in GSMA *Official Document OPG.05 - User-Network Interface APIs Version 1.0 dtd 29 March 2023*. Few APIs, as defined in 3GPP, which are endorsed for the Operator Platform UNI are extracted from the GSMA document and reproduced below.

Registration API

NF	Section	TS	API name
EEC (UC) EES (OP)	6.2	24.558	Eees_EECRegistration API
EEC (UC) ECS (OP)	8.1	24.558	Eecs_ServiceProvisioning API

Discovery API

NF	Section	TS	API name
EEC (UC) EES (OP)	6.3	24.558	Eees_EASDiscovery API

Mobility/QoE API

NF	Section	TS	API name
EEC (UC) EES (OP)	6.4	24.558	Eees_ACRevents API
EEC (UC) EES (OP)	6.5	24.558	Eees_AppContextRelocation API



THANK
YOU



babunkj@nabstract.io



www.nabstract.io