

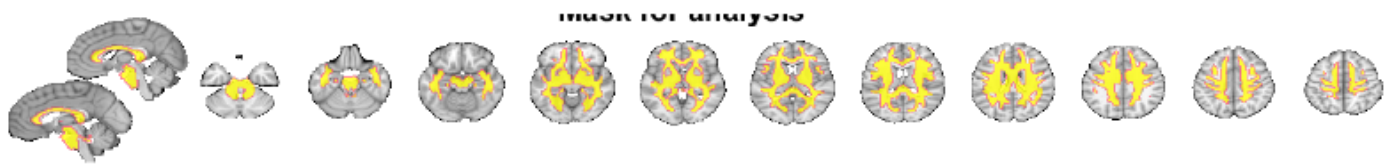
Contents

- Loading results and mask
- FDR-corrected results
- Path a results table, FDR-corrected
- Path b results table, FDR-corrected
- Path ab results table, FDR-corrected
- Combined montage plot with slices, FDR-corrected
- Uncorrected results
- Path a results table, uncorrected
- Path b results table, uncorrected
- Path ab results table, uncorrected
- Montage plot with slices, uncorrected
- Savefile information for objects with extracted data

Loading results and mask

```
-----
LOADING mediation results and images
-----
Calculating FDR threshold across family of tests in these images:
X-M_pvals.img
M-Y_pvals.img
X-M-Y_pvals.img
Direct calls to spm_defaults are deprecated.
Please use spm('Defaults',modality) or spm_get_defaults instead.
-----
Warning! Some p-values are zero.
FDR.m will interpret these as ineligible voxels.
If these are valid p-values, they should have some not-exactly-zero value.
-----
Total p-values: 93027
FDR threshold is -Inf
Saving in SETUP.fdr_p_thresh
-----
Loaded mediation:
-----
cmdstring: 'Search for mediators'
names: {'X:age' 'Y:drift-rate' 'M:FA'}
mask: 'R:\groups\chiong\aging-and-cognition\tasks\DDH\imaging\mediation_intertemporal\results_FA_v\MM_mask.img'
X: [108x1 double]
Y: [108x1 double]
M: [108x117 char]
robust_opt: 'norobust'
boot_opt: 'boot1'
multilev_opt: 'hierarchical'
rank_det: 'No'
covariates: []
covnames: [108x1 double]
arorder: 0
maskInfo: [1x1 struct]
fdr_p_thresh: -Inf

-----
Mask for analysis:
-----
Grouping contiguous voxels: 2 regions
sagittal montage: 748 voxels displayed, 50683 not displayed on these slices
axial montage: 14108 voxels displayed, 37323 not displayed on these slices
```



FDR-corrected results

Path a results table, FDR-corrected

Path b results table, FDR-corrected

Path ab results table, FDR-corrected

Combined montage plot with slices, FDR-corrected

No FDR-significant results

Uncorrected results

Uncorrected (p < .01) results

Path a results table, uncorrected

Path a, Uncorrected (p < .01)

Unable to perform assignment because the size of the left side is 0-by-1 and the size of the right side is 31009-by-1.

Error in statistic_image/threshold>alternate_cluster_extent_in_sig_field (line 425)
stats_image_obj.sig(:, 1) = new_sig;

Error in statistic_image/threshold (line 313)

```
stats_image_obj = alternate_cluster_extent_in_sig_field(stats_image_obj, i, k);
```

```
Error in mediation_brain_results_report (line 152)  
a_obj = threshold(a_obj, pthresh, 'unc', 'k', kthresh);
```

Path b results table, uncorrected

Path ab results table, uncorrected

Montage plot with slices, uncorrected

Savefile information for objects with extracted data
