



Performance



Accessibility



Best Practices



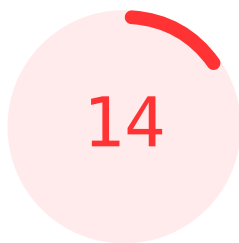
SEO



PWA

There were issues affecting this run of Lighthouse:

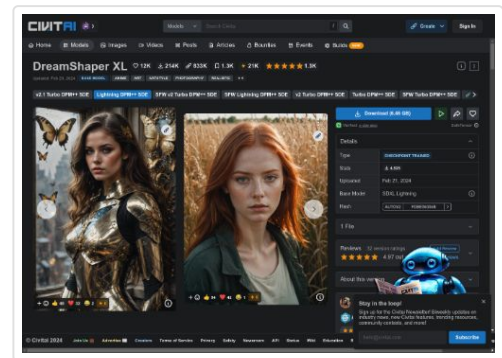
- The page loaded too slowly to finish within the time limit. Results may be incomplete.



Performance

Values are estimated and may vary. The [performance score is calculated](#) directly from these metrics. [See calculator.](#)

▲ 0–49 50–89 90–100



METRICS

Expand view

First Contentful Paint

0.4 s

▲ Largest Contentful Paint

6.7 s

▲ Total Blocking Time

2,770 ms

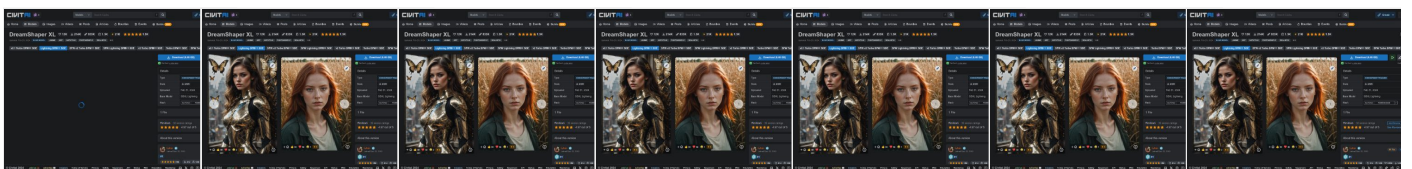
▲ Cumulative Layout Shift

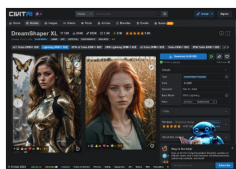
0.501

▲ Speed Index

8.9 s

View Treemap





Show audits relevant to: [All](#) [FCP](#) [LCP](#) [TBT](#) [CLS](#)

DIAGNOSTICS

- ▲ Minimize main-thread work — 41.4 s
- ▲ Largest Contentful Paint element — 6,710 ms
- ▲ Avoid large layout shifts — 5 elements found
- ▲ Reduce JavaScript execution time — 5.7 s
- ▲ Serve images in next-gen formats — Potential savings of 12,137 KiB
- ▲ Preload Largest Contentful Paint image — Potential savings of 1,960 ms
- ▲ Defer offscreen images — Potential savings of 5,540 KiB
- ▲ Reduce unused JavaScript — Potential savings of 1,062 KiB
- ▲ Preconnect to required origins — Potential savings of 180 ms
- ▲ Avoid an excessive DOM size — 5,925 elements
- Minify CSS — Potential savings of 10 KiB
- Minify JavaScript — Potential savings of 21 KiB
- Serve static assets with an efficient cache policy — 45 resources found
- Some third-party resources can be lazy loaded with a facade — 1 facade alternative available
- Image elements do not have explicit `width` and `height`
- Properly size images — Potential savings of 4,337 KiB
- Reduce unused CSS — Potential savings of 86 KiB
- Remove duplicate modules in JavaScript bundles — Potential savings of 59 KiB
- Avoid serving legacy JavaScript to modern browsers — Potential savings of 7 KiB
- Page prevented back/forward cache restoration — 3 failure reasons

Avoid enormous network payloads — Total size was 17,028 KiB



○ Avoid long main-thread tasks — 16 long tasks found



○ Initial server response time was short — Root document took 570 ms



○ Minimize third-party usage — Third-party code blocked the main thread for 0 ms



○ User Timing marks and measures — 4 user timings



○ Avoid chaining critical requests — 1 chain found



More information about the performance of your application. These numbers don't [directly affect](#) the Performance score.

PASSED AUDITS (13)

Show



Accessibility

These checks highlight opportunities to [improve the accessibility of your web app](#). Automatic detection can only detect a subset of issues and does not guarantee the accessibility of your web app, so [manual testing](#) is also encouraged.

ARIA

▲ [\[aria-*](#)] attributes do not match their roles



▲ Elements with an ARIA [\[role\]](#) that require children to contain a specific [\[role\]](#) are missing some or all of those required children.



▲ [\[role\]](#)s are not contained by their required parent element



▲ [\[aria-*](#)] attributes do not have valid values



▲ ARIA [progressbar](#) elements do not have accessible names.



These are opportunities to improve the usage of ARIA in your application which may enhance the experience for users of assistive technology, like a screen reader.

NAMES AND LABELS

- ▲ Buttons do not have an accessible name ▼
- ▲ Image elements do not have `[alt]` attributes ▼
- ▲ `<frame>` or `<iframe>` elements do not have a title ▼
- ▲ Form elements do not have associated labels ▼
- ▲ Links do not have a discernible name ▼

These are opportunities to improve the semantics of the controls in your application. This may enhance the experience for users of assistive technology, like a screen reader.

BEST PRACTICES

- ▲ `[user-scalable="no"]` is used in the `<meta name="viewport">` element or the `[maximum-scale]` attribute is less than 5. ▼

These items highlight common accessibility best practices.

CONTRAST

- ▲ Background and foreground colors do not have a sufficient contrast ratio. ▼

These are opportunities to improve the legibility of your content.

NAVIGATION

- ▲ Heading elements are not in a sequentially-descending order ▼

These are opportunities to improve keyboard navigation in your application.

ADDITIONAL ITEMS TO MANUALLY CHECK (10)

Show

These items address areas which an automated testing tool cannot cover. Learn more in our guide on [conducting an accessibility review](#).

PASSED AUDITS (17)

Show

NOT APPLICABLE (29)

Show



Best Practices

GENERAL

- ▲ Registers an `unload` listener ▼
- ▲ Browser errors were logged to the console ▼
- ▲ Issues were logged in the `Issues` panel in Chrome Devtools ▼
- Detected JavaScript libraries ▼
- ▲ Missing source maps for large first-party JavaScript ▼

TRUST AND SAFETY

- Ensure CSP is effective against XSS attacks ▼

PASSED AUDITS (9)

Show

NOT APPLICABLE (1)

Show



SEO

These checks ensure that your page is following basic search engine optimization advice. There are many additional factors Lighthouse does not score here that may affect your search ranking, including performance on [Core Web Vitals](#). [Learn more about Google Search Essentials](#).

CONTENT BEST PRACTICES

- ▲ Image elements do not have `[alt]` attributes ▼

Format your HTML in a way that enables crawlers to better understand your app's content.

ADDITIONAL ITEMS TO MANUALLY CHECK (1)

Show

Run these additional validators on your site to check additional SEO best practices.

PASSED AUDITS (11)

Show

NOT APPLICABLE (2)

Show



PWA

These checks validate the aspects of a Progressive Web App. [Learn what makes a good Progressive Web App.](#)

INSTALLABLE

Web app manifest and service worker meet the installability requirements



PWA OPTIMIZED

Configured for a custom splash screen



▲ Does not set a theme color for the address bar. Failures: No `<meta name="theme-color">` tag found.



○ Content is sized correctly for the viewport



Has a `<meta name="viewport">` tag with `width` or `initial-scale`



▲ Manifest doesn't have a maskable icon



ADDITIONAL ITEMS TO MANUALLY CHECK (3)

Show

These checks are required by the baseline [PWA Checklist](#) but are not automatically checked by Lighthouse. They do not affect your score but it's important that you verify them manually.

■ Captured at Feb 23, 2024, 8:50 AM GMT+1

■ Initial page load

■ Emulated Desktop with Lighthouse 11.2.0

■ Custom throttling

■ Single page load

■ Using Chromium 120.0.0.0 with devtools

Generated by **Lighthouse** 11.2.0 | [File an issue](#)