

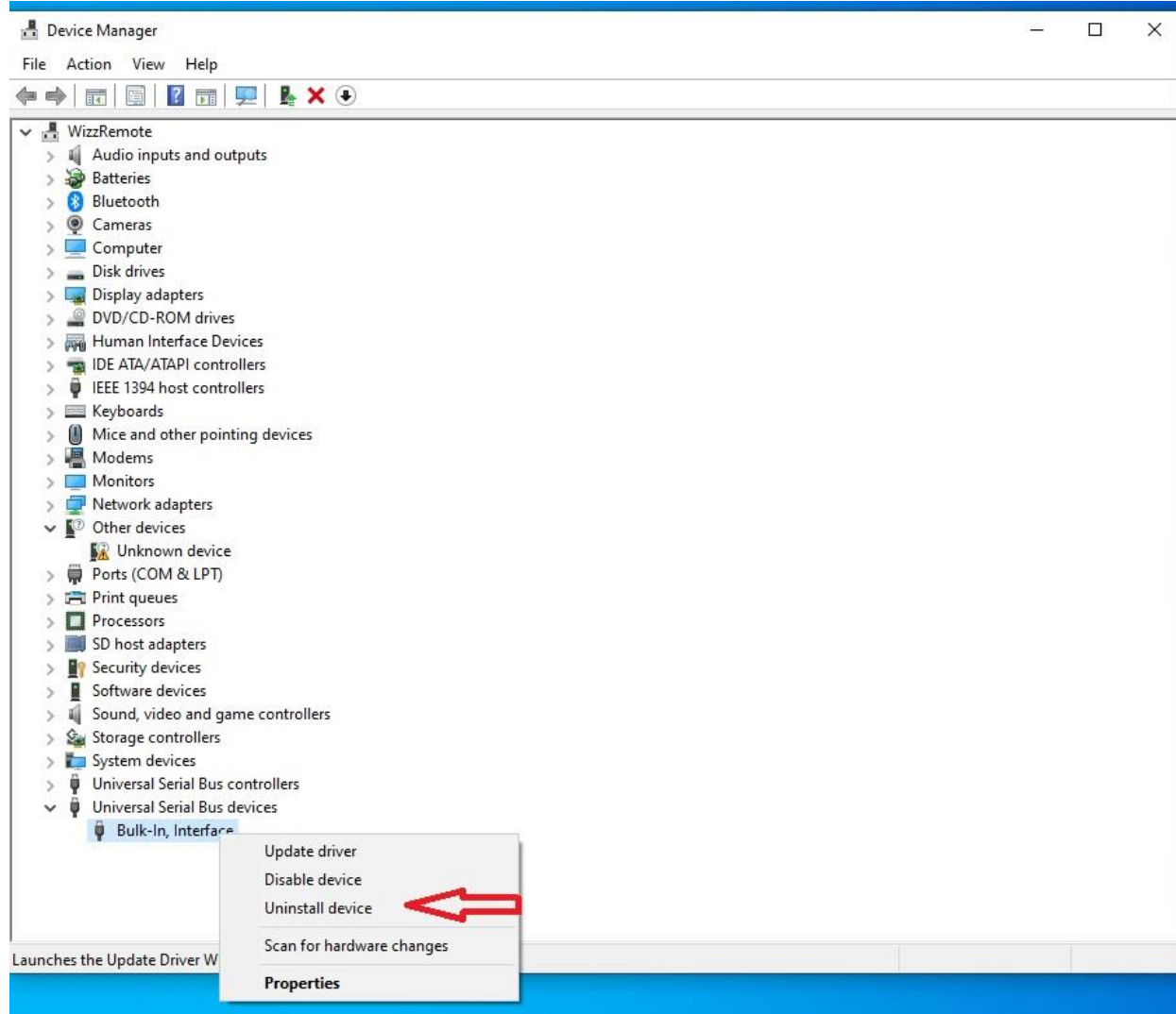
USB RTL Dongles –

Issue Windows Laptop Desktop has choppy audio, motor boat audio, pulsating audio, audio cutting out, audio chopping, choppy reception. The USB device cuts out, or won't play. SDR applications launch is slow, choppy.

Applications tested: HSDR, Cubic SDR, (SDR sharp - SDR#), Gnu Radio

Fix-

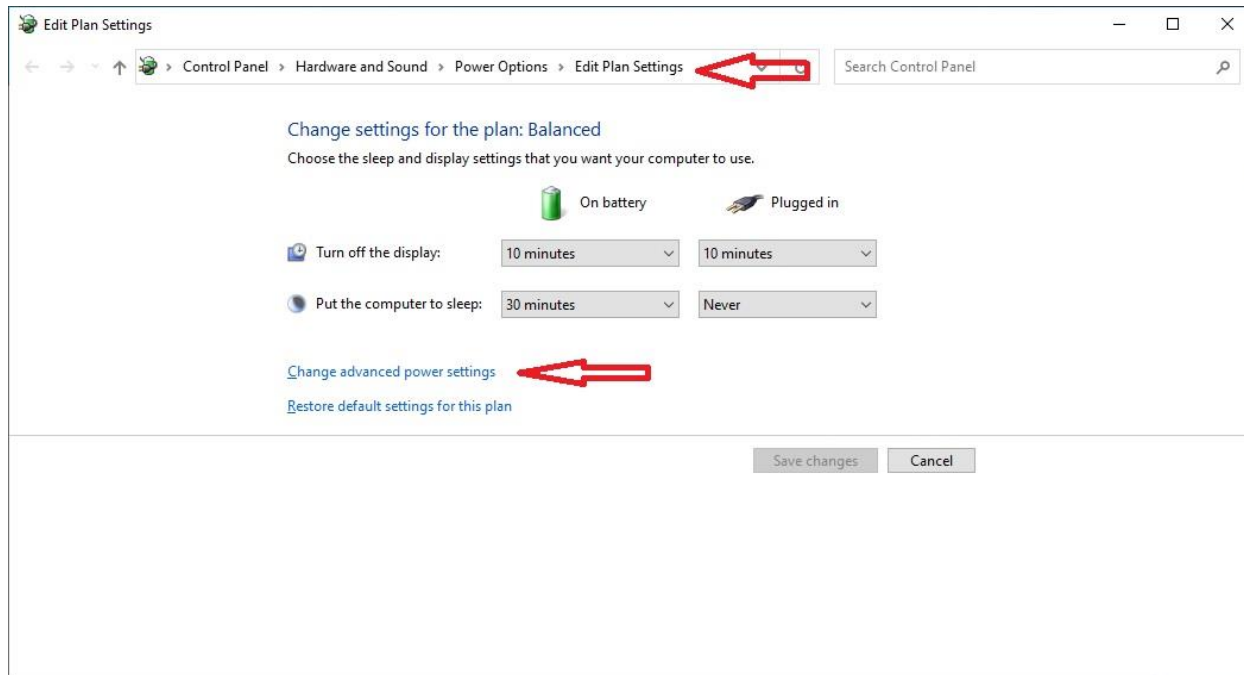
1. Remove dongle.
2. Uninstall Driver, Search bar [Device manager], Use Device Manager to uninstall Bulk-In interface:
 - a. Universal Serial Device Devices: right click: Uninstall driver.



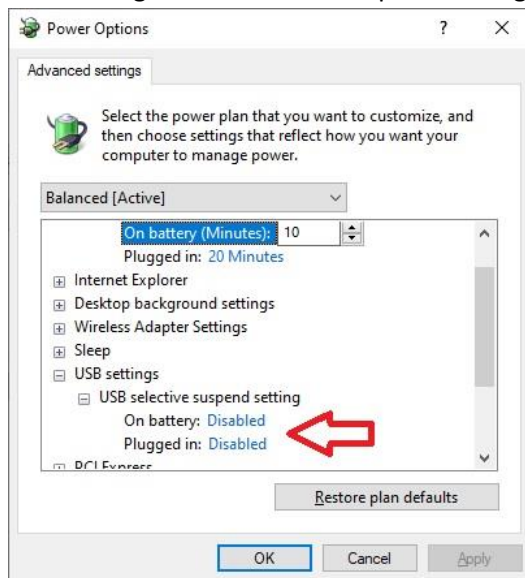
- b. Reboot

3. Modify Power plan, Search Bar [Power Plan], Control Panel > Hardware and Sound > Power Options>Edit Plan Settings. "PlanName" [Active] , the active plan.

a. [Change Advanced power settings]



b. USB Settings -USB selective suspend setting, set all options to [Disabled]



c. Reboot

4. Install Dongle in USB port.

5. Reinstall Drivers.

