

Four images. Overlay black dot and copy-paste to sequentially displace image, then crop.

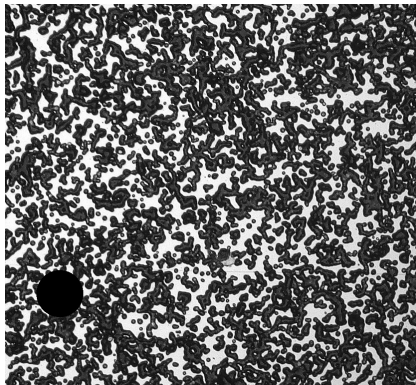
Using otherwise identical input and params files....

With: `<Parameter name="use_incremental_formulation" type="bool" value="false" />`

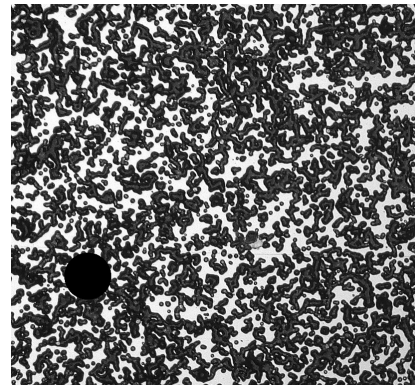
With: `<Parameter name="use_incremental_formulation" type="bool" value="true" />`

(Results plotted from Results_i.txt files, scale 0-0.01 to highlight uncorrelated [Sigma=-1] dot)

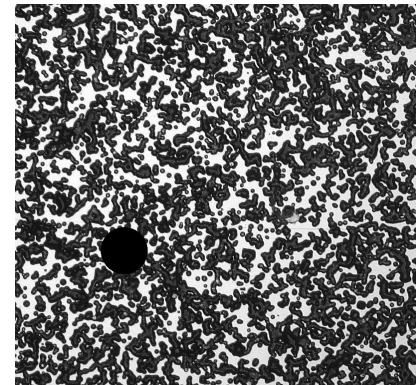
Img_0



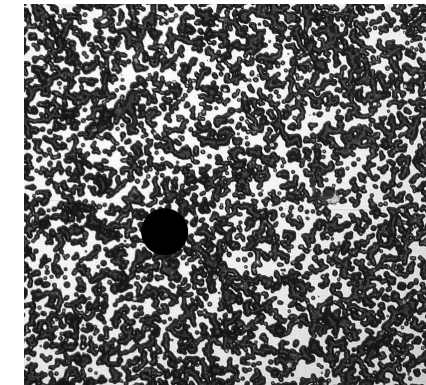
Img_1



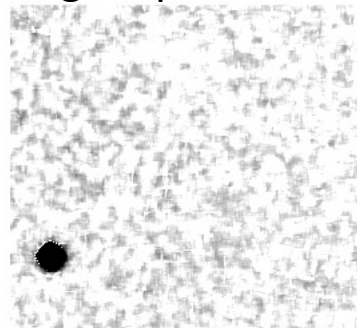
Img_2



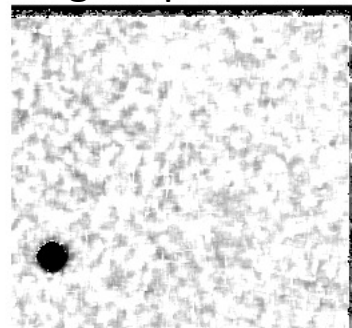
Img_3



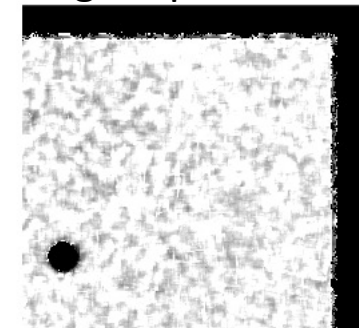
Sigma plot 0-0



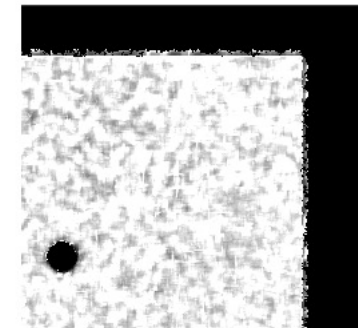
Sigma plot 0-1



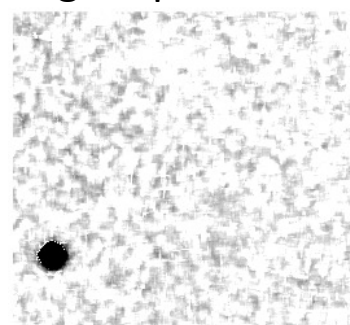
Sigma plot 0-2



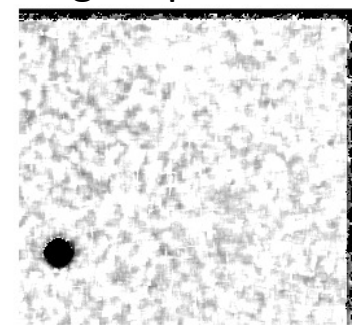
Sigma plot 0-3



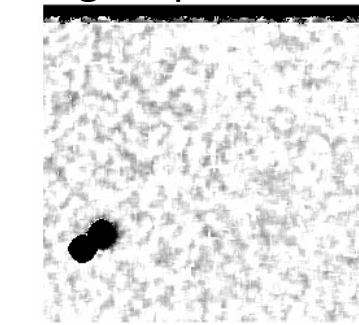
Sigma plot 0-0



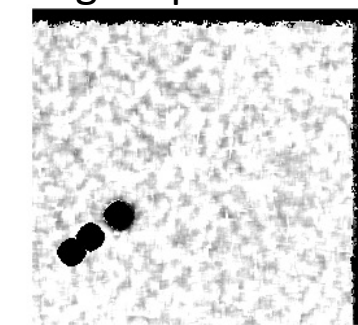
Sigma plot 0-1



Sigma plot 0-2



Sigma plot 0-3



Note: incremental correlation does not report values (displ, strain, sigma, etc) in the undeformed/reference subset position (i.e. the subset positions for Img_0), as is the case when incremental_formulation=false.