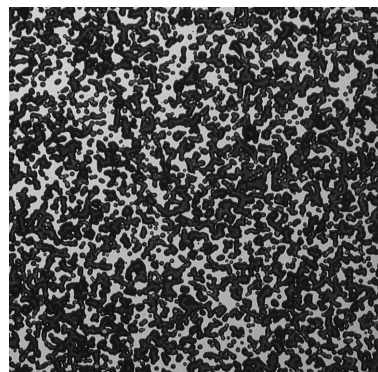
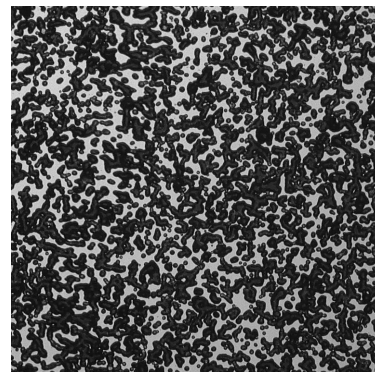


Four images. Apply ~25% stretch perpendicular to a 100 pixel band running at 15 degrees in IMG_2. IMG_3 and 4 are simply displaced versions of IMG_2.

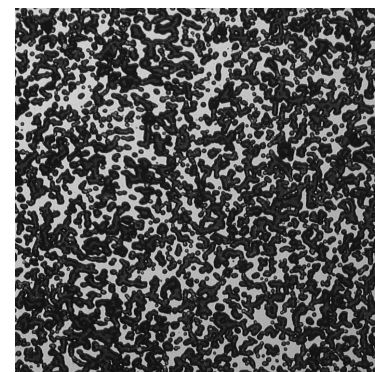
Img_0



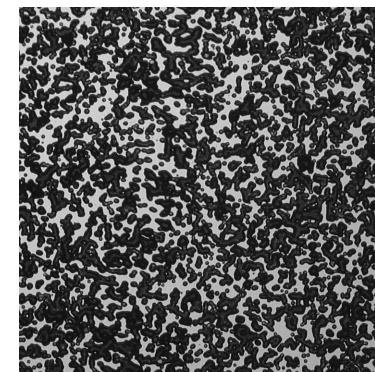
Img_1



Img_2



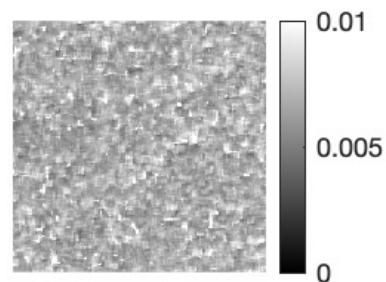
Img_3



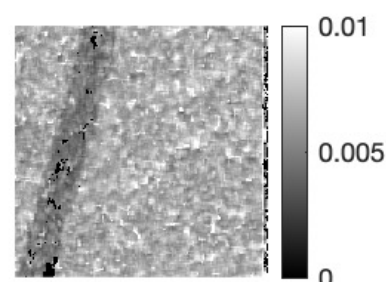
Using otherwise identical input and params files....

With: `<Parameter name="use_incremental_formulation" type="bool" value="false" />`

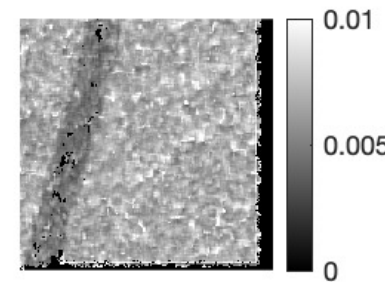
Sigma plot 0



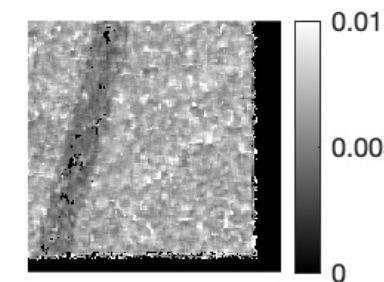
Sigma plot 1



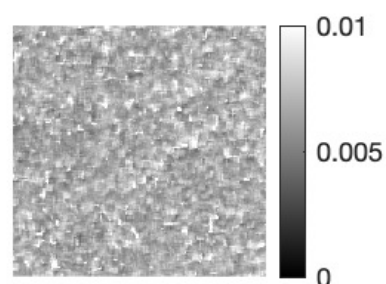
Sigma plot 2



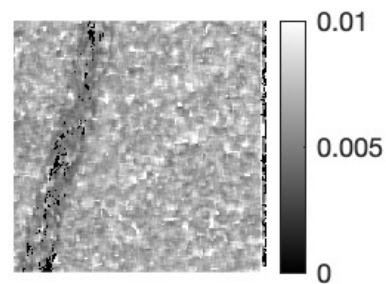
Sigma plot 3



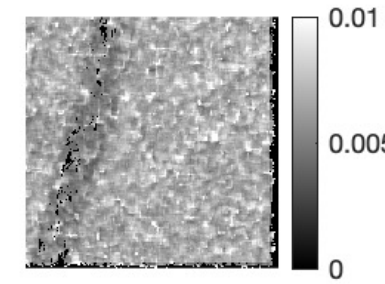
Sigma plot 0



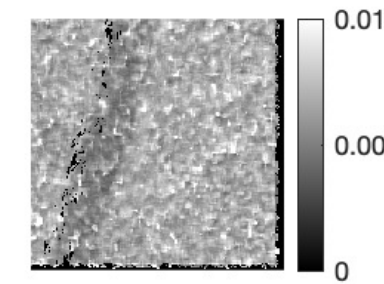
Sigma plot 1



Sigma plot 2



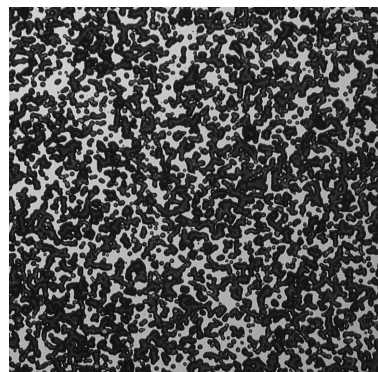
Sigma plot 3



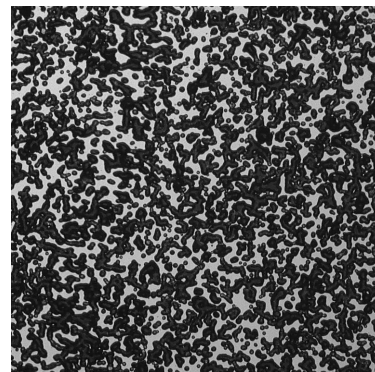
With: `<Parameter name="use_incremental_formulation" type="bool" value="true" />`

Four images. Apply ~25% stretch perpendicular to a 100 pixel band running at 15 degrees in IMG_2. IMG_3 and 4 are simply displaced versions of IMG_2.

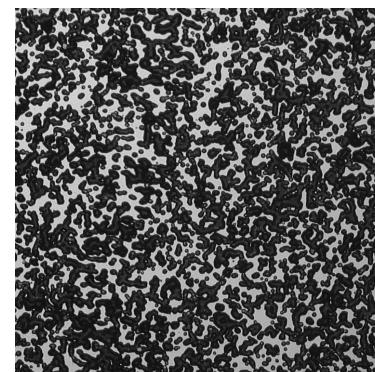
Img_0



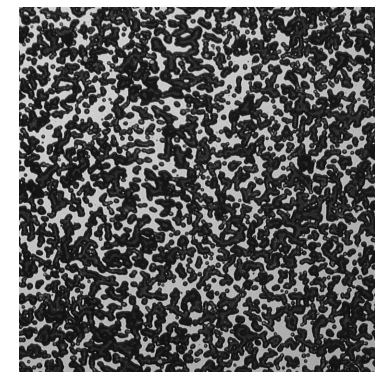
Img_1



Img_2



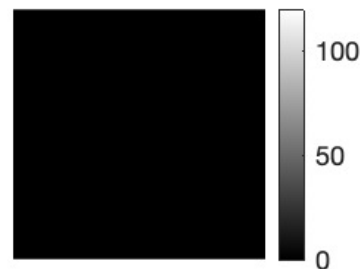
Img_3



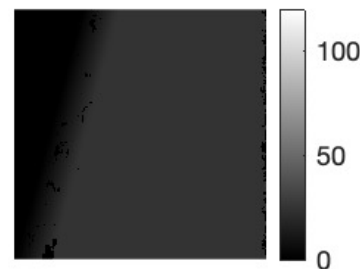
Using otherwise identical input and params files....

With: `<Parameter name="use_incremental_formulation" type="bool" value="false" />`

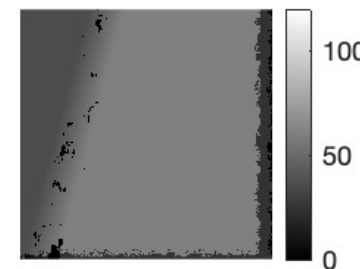
Displ_x 0



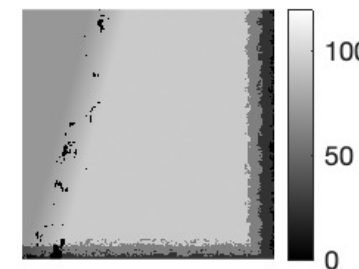
Displ_x 1



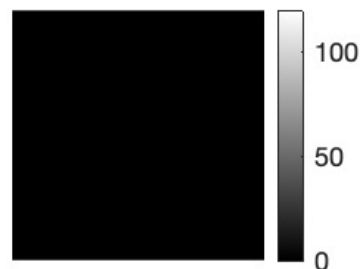
Displ_x 2



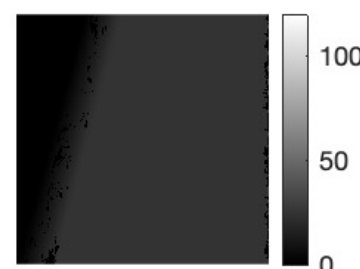
Displ_x 3



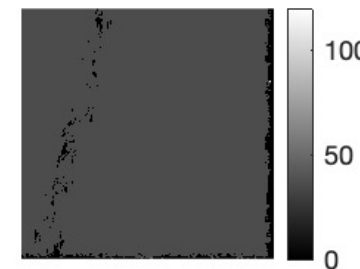
Displ_x 0



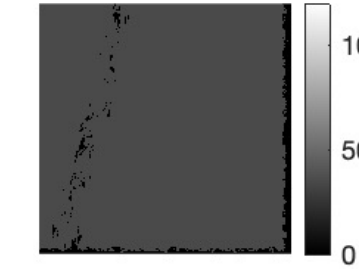
Displ_x 1



Displ_x 2



Displ_x 3



With: `<Parameter name="use_incremental_formulation" type="bool" value="true" />`

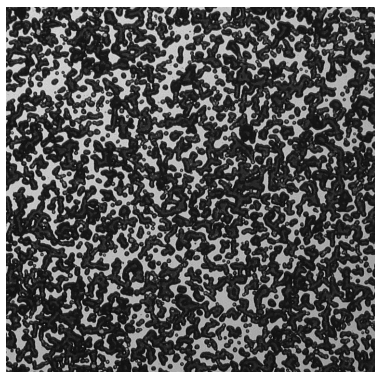
Four images. Overlay black dot and copy-paste to sequentially displace image, then crop.

Using otherwise identical input and params files....

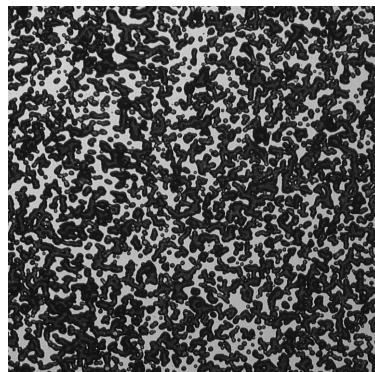
With: `<Parameter name="use_incremental_formulation" type="bool" value="false" />`

With: `<Parameter name="use_incremental_formulation" type="bool" value="true" />`

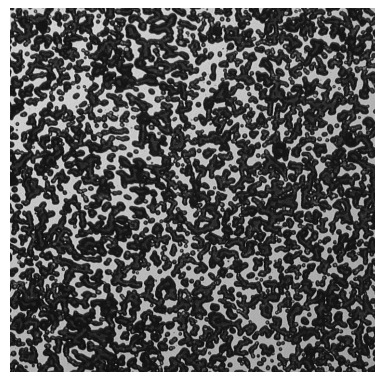
Img_0



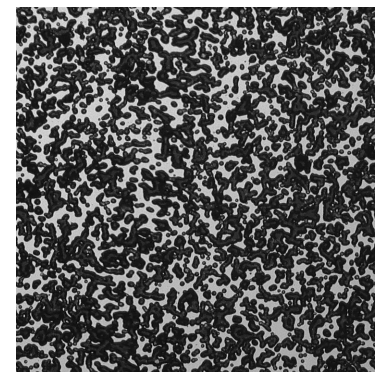
Img_1



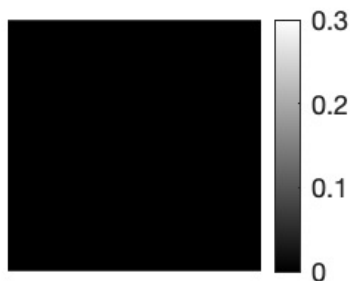
Img_2



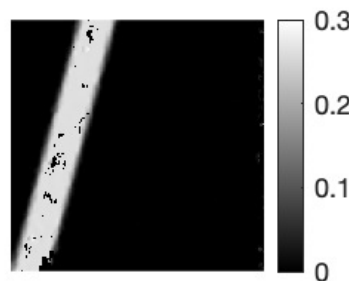
Img_3



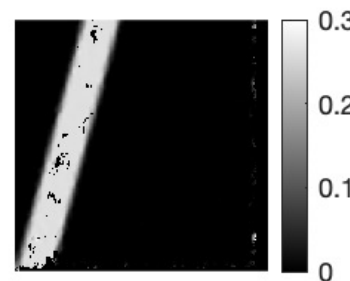
VSG_Exx 0



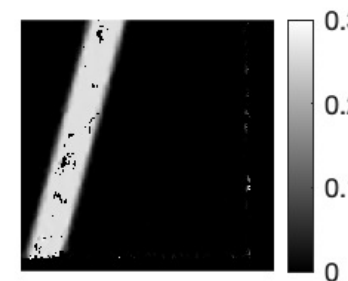
VSG_Exx 1



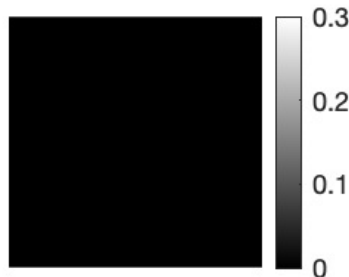
VSG_Exx 2



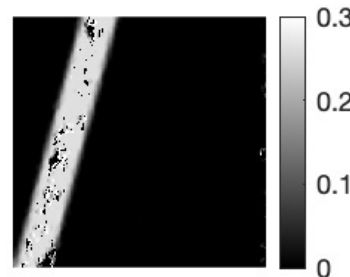
VSG_Exx 3



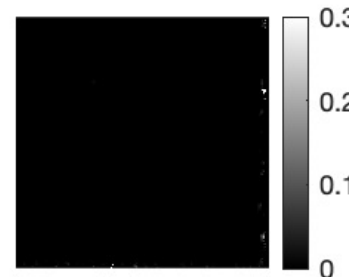
VSG_Exx 0



VSG_Exx 1



VSG_Exx 2



VSG_Exx 3

