

I am still feeling a bit sick and not my usual self.
Which might be useful to describe my problems from a dumb user perspective :-)

Config Options > Image tab

"Default Link Mode ('not owned')" was not clear to me right away. Especially since I do not plan on using image links, but image insertions, always visible.

Imo, an easier caption would be something like:
Link to originals by default (no copies)

What also threw me off:

Upon selecting "External", I wondered where they get stored, but did not worry about it, assuming that I would be asked on first drag+drop, or that they would end up in a subfolder automatically.

Which is the case for new knt-files, as it turns out. But when selecting "External" with an existing file, you have to perform an additional step on "File > Properties". Which makes sense, ofc, but did not occur to me right away.

File > Properties

The setting on File Properties was "Embedded RTF". I changed it to "External" and the default storage path popped up underneath, I was satisfied with it and clicked OK. This triggers a range of problems later on. Apparently, what I should have done is to also activate a radio button named "change" which was counter-intuitive to me, because I did not want to change this default path.

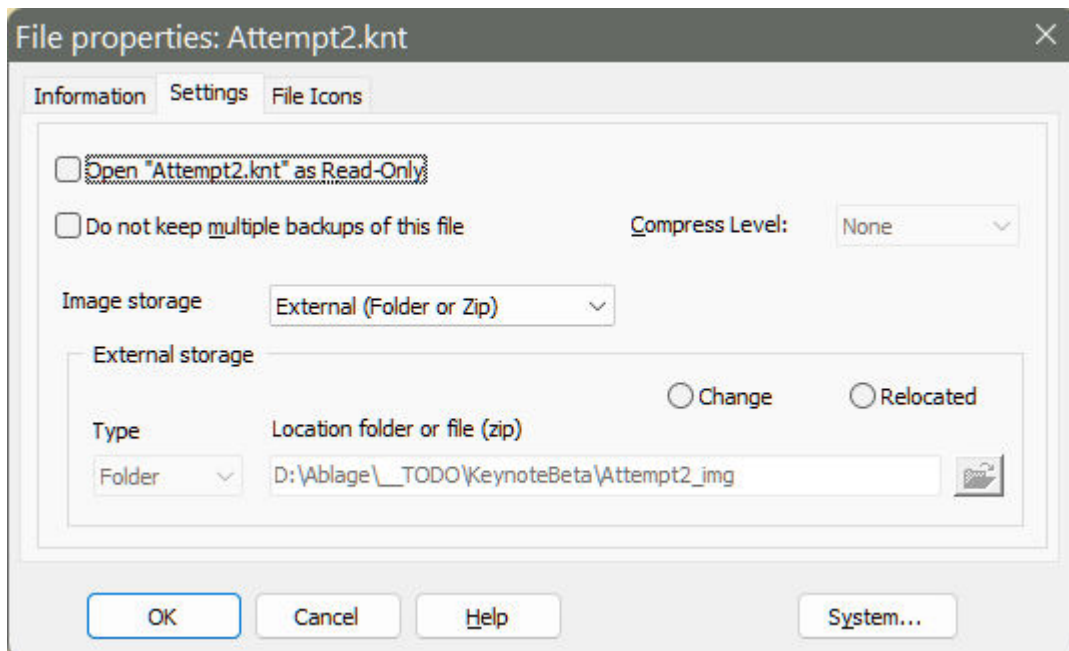
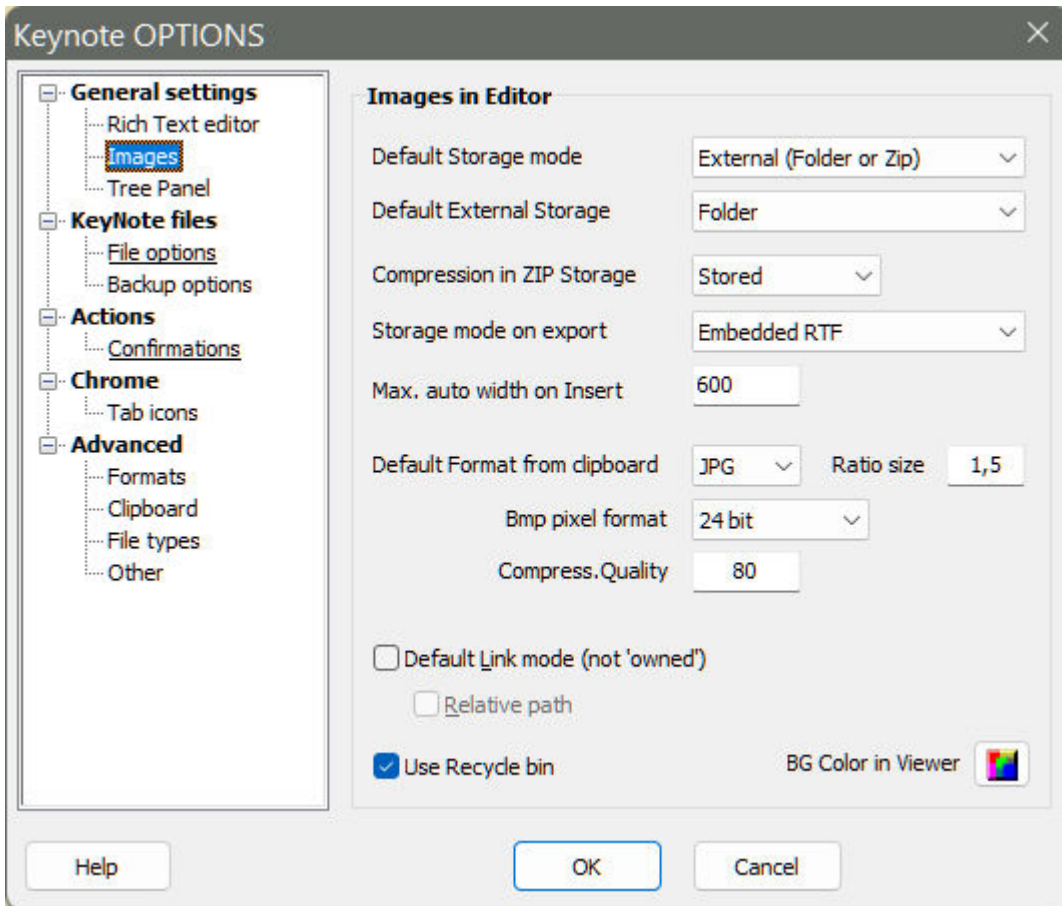
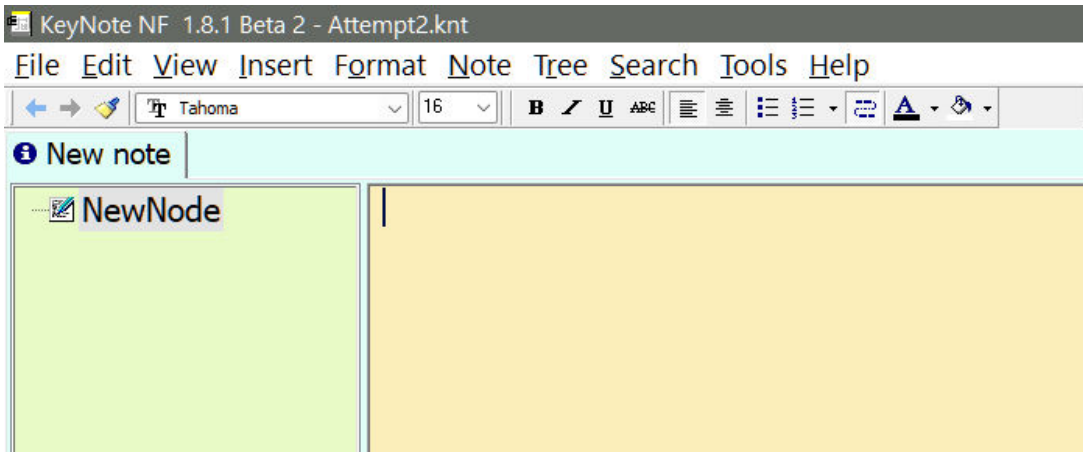
If you do not activate "change" at this step, the image files generated will miss the dot-separator between file name and extension. A problem I encountered and described in my previous post "1st_Attempt".

To make things easier for my testing purposes, I will forget about existing knt-files (which may contain weird code from years of usage and prevent you from reproducing my issues).

Instead, I will record my findings on a brand new file:

1) File > New

I save it under the name "Attempt2.knt"



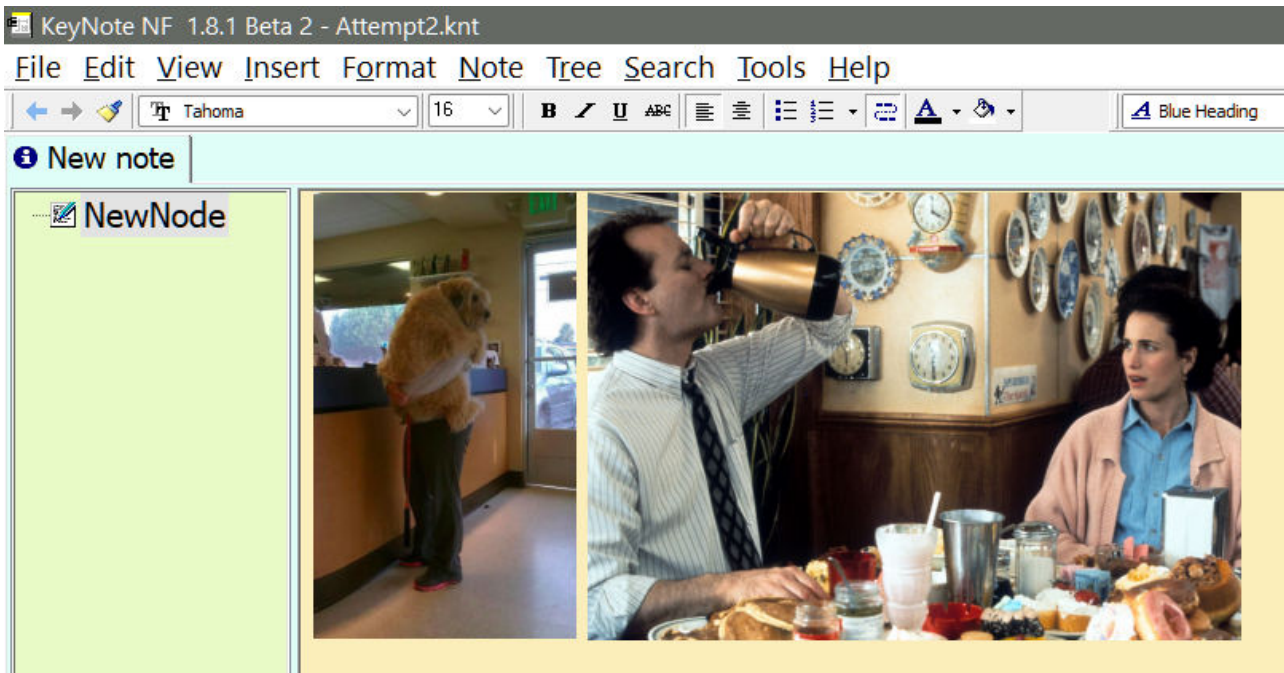
2) Dragging images:

I insert „dog_to_vet_2.jpg“ and reduce its size in the editor

I insert „Groundhog-Day.jpg“ next to it and reduce its size for a nice fit.

I save the file.

Everything looks great. Big sigh of relief.

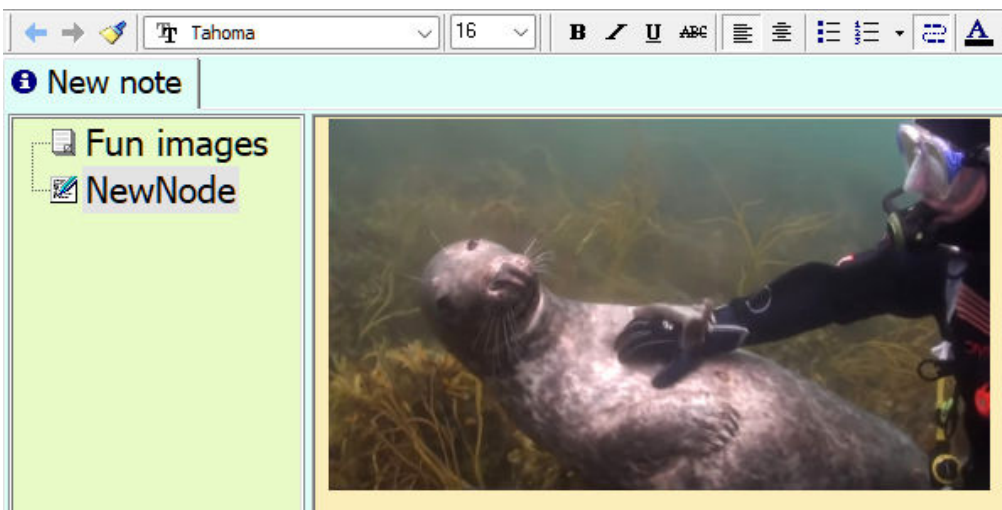


3) Adding more nodes with images:

I rename the node to „fun images“

I add another node and insert a third image „Seal.jpg“

I save the file.

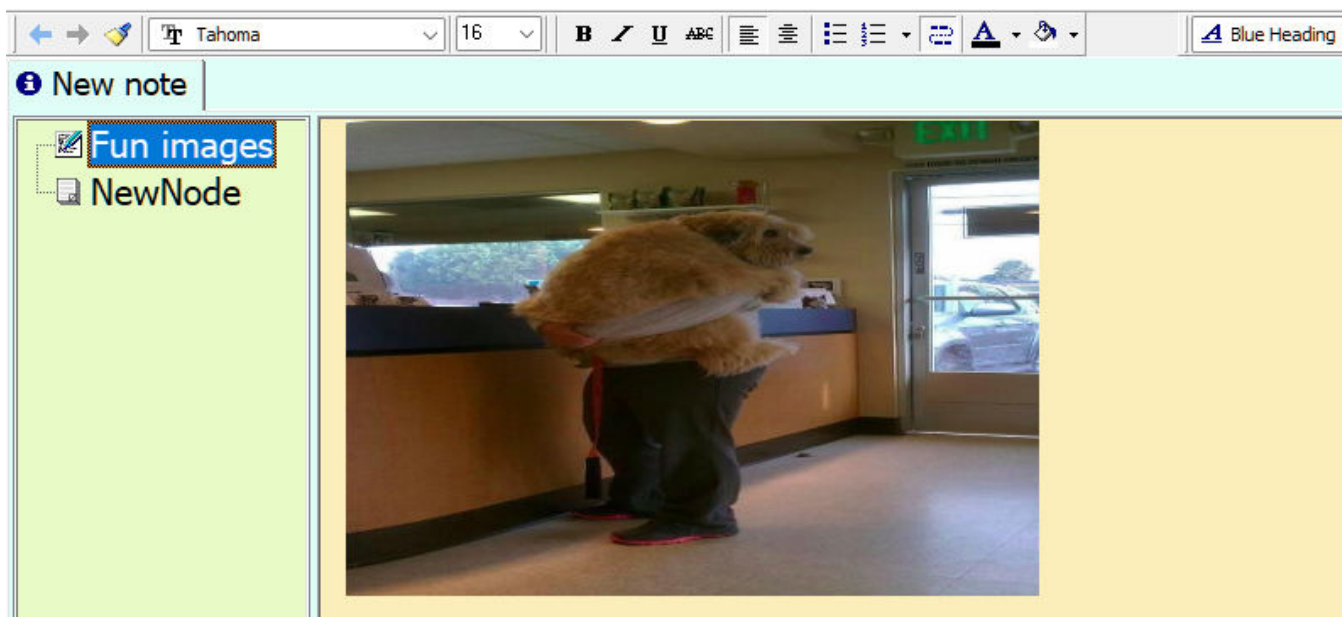


4) Back on the top node:

I delete the first image „dog_to_vet_2.jpg“

I save the file.

It looks good at first sight, on both nodes, but when I come back to the top node, the deleted „dog_to_vet_2.jpg“ is there again, now sporting the dimension of the second image:



Not good.

Easy to spot with photographs. But when this happens with graphs and screenshots of manuals I prepare, where dimensions are always the same and there is little difference between step-by-step graphics, this may go unnoticed for a long time. Even with multiple backup-copies it will be hard to detect at what time something went wrong or even that the graphics show the wrong content at all.

BTW, how do I make the image titles show up in the editor?

I dbl-click an image and assign the title „Step 1: Start here“

Where do I get to see this title?

And also:

How would I go about resetting/ restoring the proportions of an inserted image to its original height/width ratio?

Say if I inadvertently dragged the wrong size handle?

It were nice to have s.th. like „Restore original proportions“ in the context menu.

5) Creating a second Note:

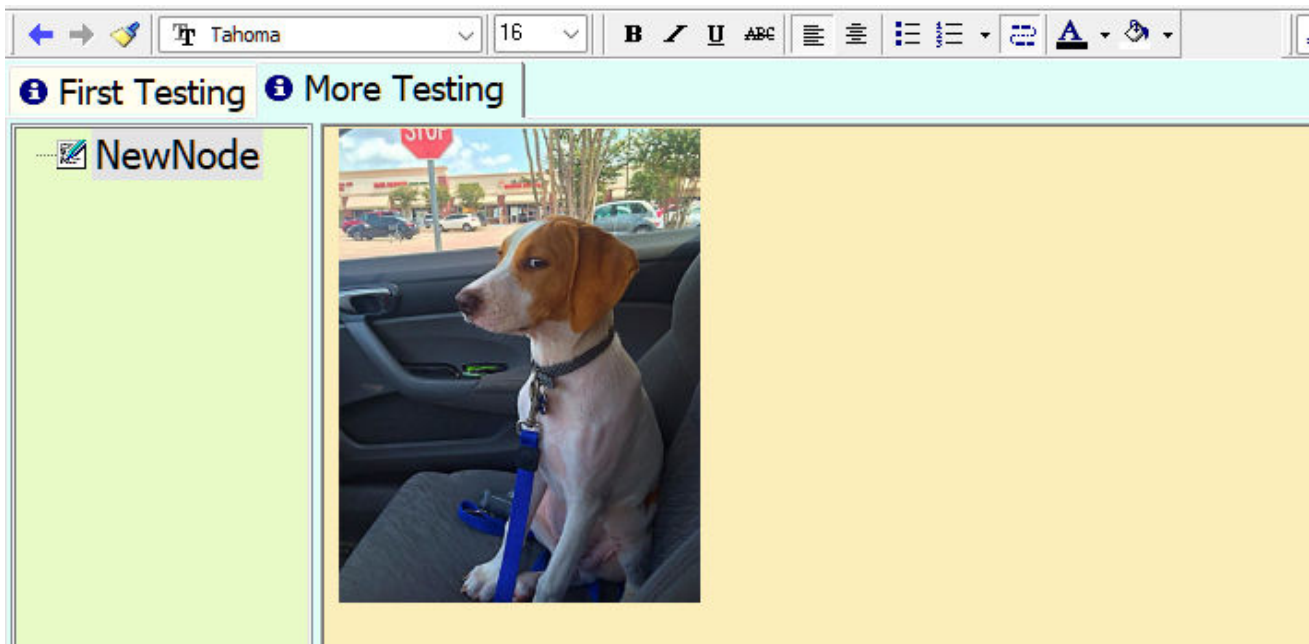
I rename the first note into „First Testing“.

I save the file.

I create a second note and insert „dog_to_vet_1.jpg“ in its top node.

I rename this note into „More Testing“.

I save the file.



Checking up on it in my file manager, I expect a new subfolder to be created, but nope. All images are in the same subfolder that has nothing to do with the real names of the notes.

D: > Ablage > _TODO > KeynoteBeta > Attempt2_img > New note >

Name ^	Size	Modified
1_dog_to_vet_2.jpg	37,46 KB	20.11.202
2_Groundhog-Day.jpg	332,79 KB	20.11.202
3_Seal.jpg	100,00 KB	20.11.202
4_dog_to_vet_1.jpg	77,88 KB	20.11.202

This makes me question the purpose of the subfolders. Why not simply put all images into one and same location per knt-file? It would make looking for them easier when I want to edit an image.

I also take a look inside „_LOG.txt“ and I notice original image locations being saved there. What is the purpose of storing the original paths?

It is highly unlikely that a „screenshot.jpg“ or „photo.jpg“ will point to the same content weeks later or on a different machine.

Will this log file become bigger all the time?

I tend to do heavy editing in my knt-files, on a daily basis. Might the log files slow me down after a few years?