



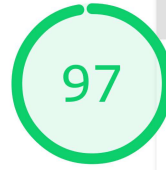
Performance



Accessibility



Best Practices



SEO



- Print Summary
- Print E
- Copy JS
- Save as HTML
- Save as Web App
- Save as Gist
- Toggle Dark Theme



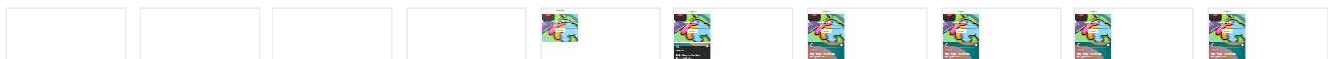
Performance

Metrics



● First Contentful Paint	1.6 s	● First Meaningful Paint	1.6 s
■ Speed Index	3.5 s	■ First CPU Idle	3.7 s
● Time to Interactive	3.8 s	▲ Max Potential First Input Delay	370 ms

Values are estimated and may vary. The performance score is based only on these metrics.



Opportunities — These suggestions can help your page load faster. They don't directly affect the Performance score.

Opportunity	Estimated Savings
▲ Serve images in next-gen formats	2.71 s

Diagnostics — More information about the performance of your application. These numbers don't [directly affect](#) the Performance score.

- ▲ Ensure text remains visible during webfont load ▼
- ▲ Avoid enormous network payloads — Total size was 4,418 KB ▼
- ▲ Minimize main-thread work — 4.5 s ▼
- Minimize Critical Requests Depth — 5 chains found ▼
- Keep request counts low and transfer sizes small — 33 requests • 4,418 KB ▼

Passed audits (18) ▼



Accessibility

These checks highlight opportunities to [improve the accessibility of your web app](#). Only a subset of accessibility issues can be automatically detected so manual testing is also encouraged.

Additional items to manually check (11) — These items address areas which an automated testing tool cannot cover. Learn more in our guide on [conducting an accessibility review](#). ▼

Passed audits (12) ▼

Not applicable (23)



Best Practices

▲ Does not use passive listeners to improve scrolling performance



Passed audits (14)



SEO

These checks ensure that your page is optimized for search engine results ranking. There are additional factors Lighthouse does not check that may affect your search ranking. [Learn more.](#)

Mobile Friendly — Make sure your pages are mobile friendly so users don't have to pinch or zoom in order to read the content pages. [Learn more.](#)

■ Tap targets are not sized appropriately — 73% appropriately sized tap targets

Additional items to manually check (1) — Run these additional validators on your site to check additional SEO best practices.

Passed audits (11)

Not applicable (1)



Progressive Web App

These checks validate the aspects of a Progressive Web App. [Learn more.](#)

Fast and reliable

● Page load is fast enough on mobile networks

▲ Current page does not respond with a 200 when offline

▲ start_url does not respond with a 200 when offline
No usable web app manifest found on page.

Installable

- Uses HTTPS ▼
- ▲ Does not register a service worker that controls page and `start_url` ▼
- Web app manifest does not meet the installability requirements ▼
 - ▲ Failures: No manifest was fetched.

PWA Optimized

- Redirects HTTP traffic to HTTPS ▼
- ▲ Is not configured for a custom splash screen Failures: No manifest was fetched. ▼
- Does not set a theme color for the address bar. ▼
 - ▲ Failures: No manifest was fetched, No ``<meta name="theme-color">`` tag found.
- Content is sized correctly for the viewport ▼
- Has a `<meta name="viewport">` tag with `width` or `initial-scale` ▼
- Contains some content when JavaScript is not available ▼
- ▲ Does not provide a valid `apple-touch-icon` ▼

Additional items to manually check (3) — These checks are required by the baseline [PWA Checklist](#) but are not automatically checked by Lighthouse. They do not affect your score but it's important that you verify them manually. ▼

Runtime Settings

URL `https://liebling.eduardogomez.io/`

Fetch time Oct 12, 2019, 7:31 AM GMT+5:30

Device	Emulated Nexus 5X
Network throttling	150 ms TCP RTT, 1,638.4 Kbps throughput (Simulated)
CPU throttling	4x slowdown (Simulated)
User agent (host)	Mozilla/5.0 (Windows NT 10.0; Win64; x64) AppleWebKit/537.36 (KHTML, like Gecko) Chrome/77.0.3865.90 Safari/537.36
User agent (network)	Mozilla/5.0 (Linux; Android 6.0.1; Nexus 5 Build/MRA58N) AppleWebKit/537.36 (KHTML, like Gecko) Chrome/74.0.3694.0 Mobile Safari/537.36 Chrome-Lighthouse
CPU/Memory Power	742

Generated by **Lighthouse** 5.4.0 | [File an issue](#)