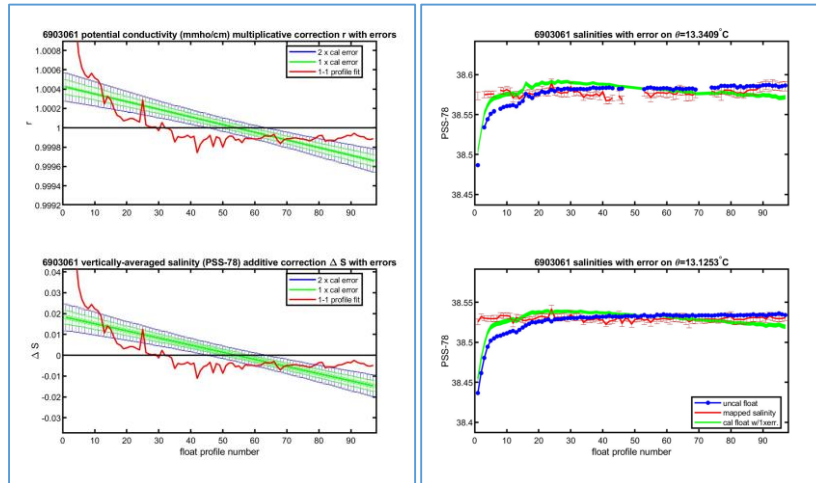
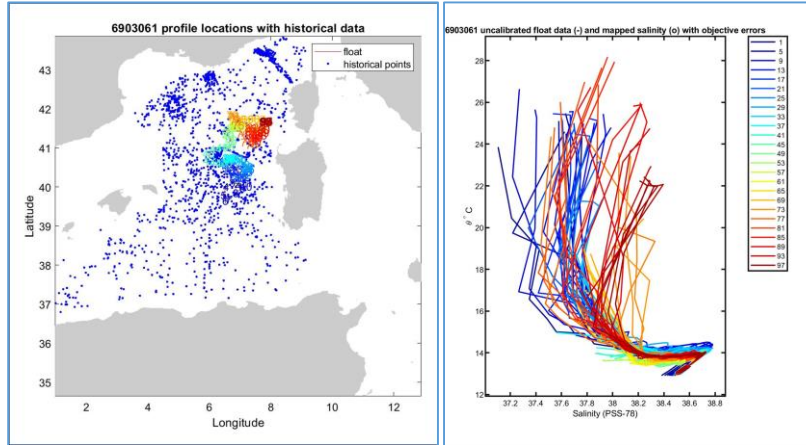


- **WMO ID 6903061**
 - SBE41CP 97 profiles
 - Deploy 2021/06/25
 - Algerian and Liguro-Provençal sub basins
 - Active

OWC results



In the first 17 cycles float didn't work well, then seems to start to work well, is it true???

No correction and what qc? Have you ever seen such behavior?

Additional analysis

