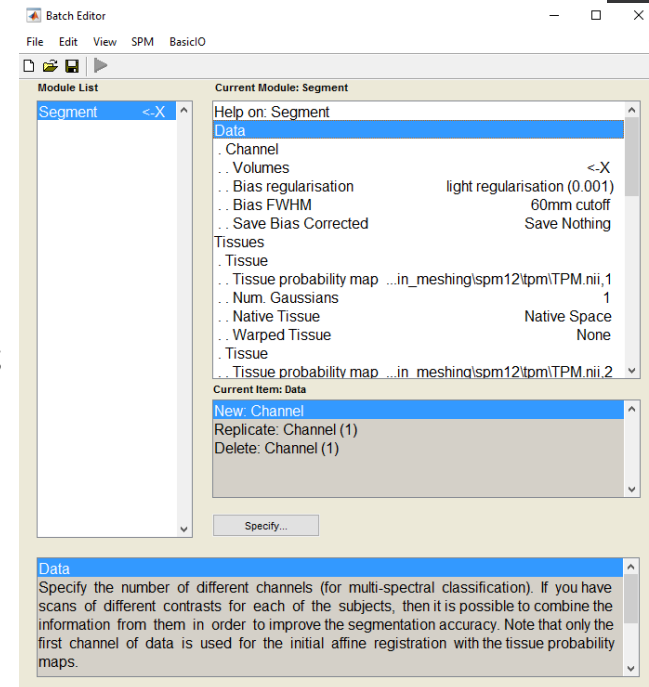




Example: Segmenting using SPM12

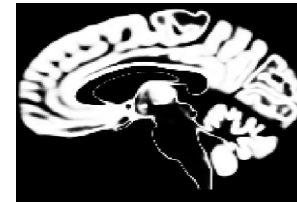
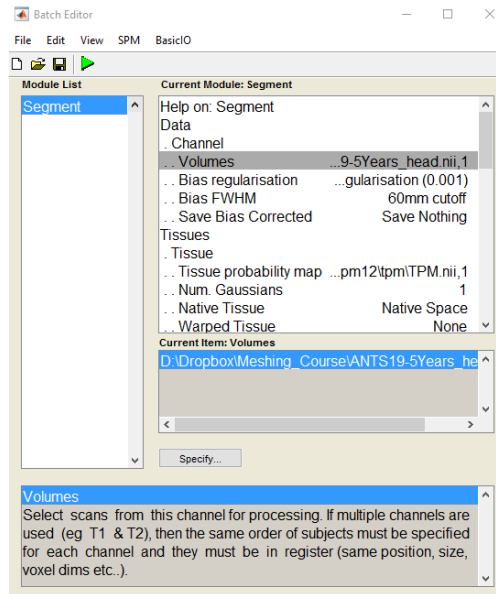
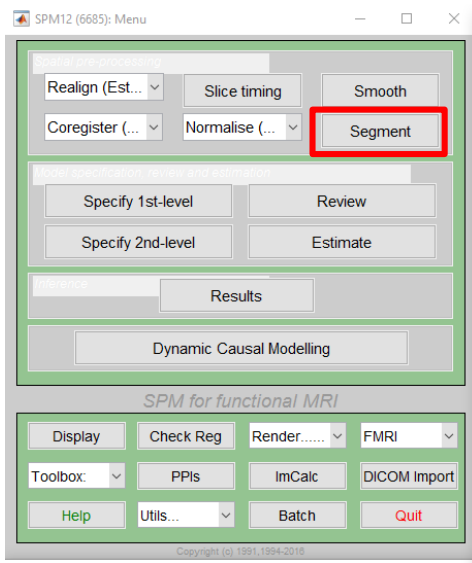
- Software available at:
<http://www.fil.ion.ucl.ac.uk/spm/software/spm12/>
- Installation: unzip folder and open the directory within MATLAB
- Add path to MATLAB environment:
e.g.: `addpath C:\Users\username\Documents\SPM12;`
`savepath`
- Type `spm` in the Command Window and select fMRI
- Select **Segment** in the menu
- Add **New Channel** if trying to combine T1/T2 Scans
- Select different tissue probability maps and affine regularization template if necessary



Batch Editor appears Segment button is clicked



Example: Segmenting using SPM12



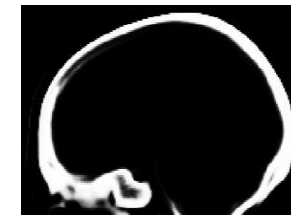
c1



c2



c3



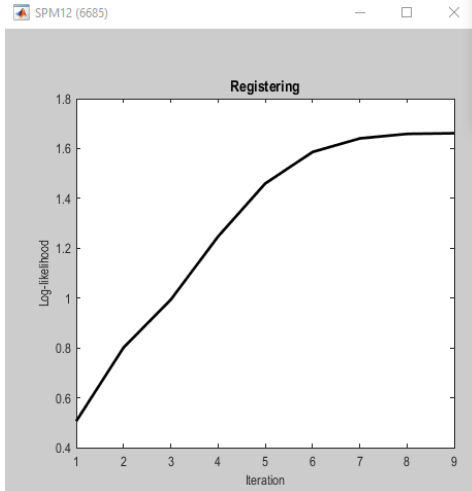
c4



c5

Output Files:

- c1ANTS19-5Years_head.nii
- c2ANTS19-5Years_head.nii
- c3ANTS19-5Years_head.nii
- c4ANTS19-5Years_head.nii
- c5ANTS19-5Years_head.nii



Progress/Status

