

# EloSeq problem

Clare Kimock

11/9/2020

## data

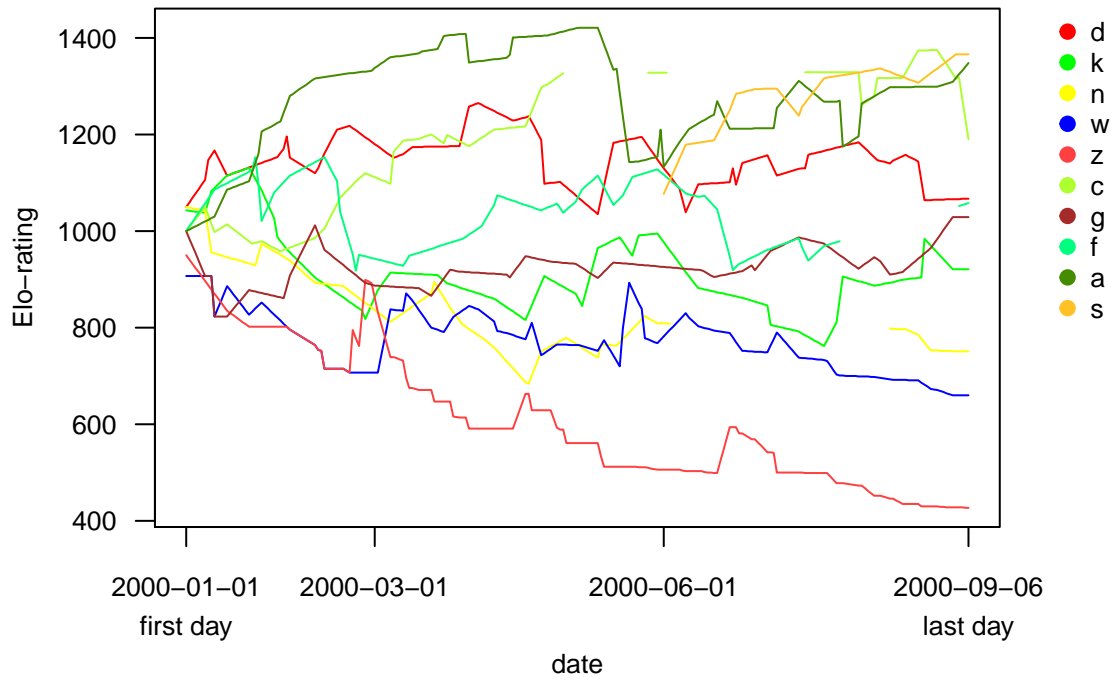
```
xdata <- read.table(system.file("ex-sequence.txt", package = "EloRating"), header = TRUE)
xpres <- read.table(system.file("ex-presence.txt", package = "EloRating"), header = TRUE)
xpres$Date <- as.Date(xpres$Date)
seqcheck(winner = xdata$winner, loser = xdata$loser, Date = as.Date(xdata$Date),
         presence = xpres)
```

```
## Presence data supplied, see below for details
## Everything seems to be fine with the interaction sequence...OK
##
## #####
##
## Presence data seems to be fine and matches interaction sequence...OK
##
## #####
```

## calculate ratings

```
ratings <- elo.seq(winner = xdata$winner, loser = xdata$loser, Date = xdata$Date,
                 presence = xpres, init = "bottom")
dailyratings <- ratings$cmat
# view(dailyratings) animal s is assigned average rating upon entry

eloplots(ratings)
```



*## animal s is assigned average rating upon entry*