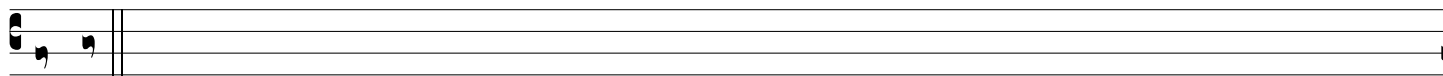
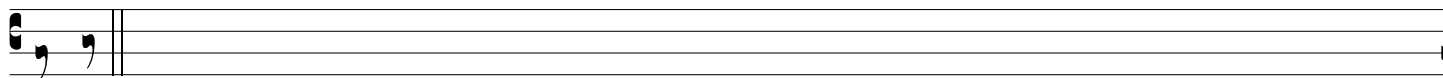


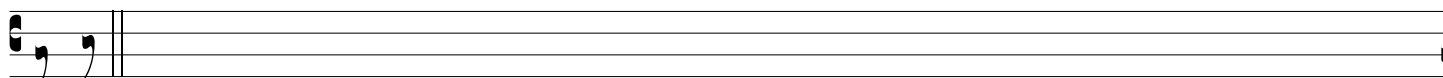
fT gT hvgT!FE



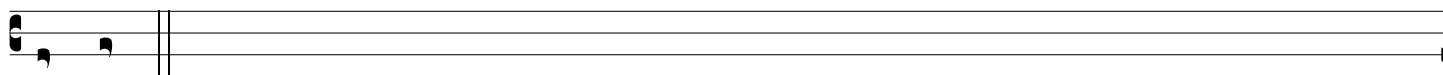
ft2 gt2



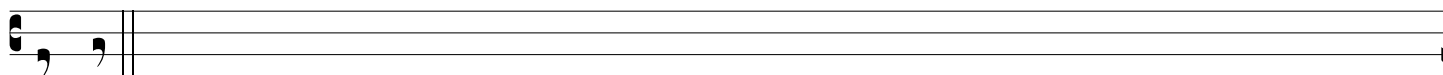
ft3 gt3



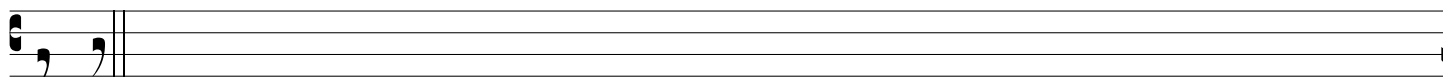
ft4 gt4



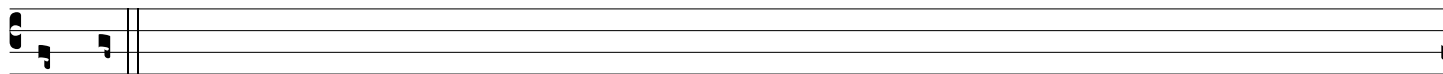
fR2 gR2



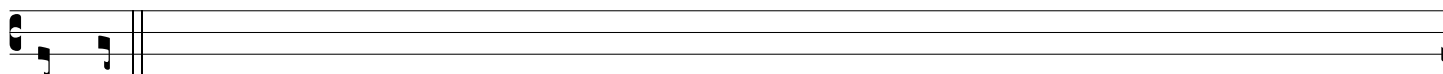
fR3 gR3



fR4 gR4



fU2 gU2



fU3 gU3

A musical staff with a treble clef. It contains two notes: a quarter note on the second line (F4) and a quarter note on the third line (G4). The staff ends with a double bar line.

fU4 gU4

A musical staff with a treble clef. It contains two notes: a quarter note on the fourth line (F5) and a quarter note on the fifth line (G5). The staff ends with a double bar line.

fU5 gU5

A musical staff with a treble clef. It contains six notes: a quarter note on the second line (F4), a quarter note on the second space (G4), a quarter note on the second space (G4), a quarter note on the second space (G4), a quarter note on the second space (G4), and a quarter note on the second space (G4). The staff ends with a double bar line.

fST fSH gST gSH fST!gSH gST!hSH

A musical staff with a treble clef. It contains two notes: a quarter note on the second line (F4) and a quarter note on the second space (G4). The staff ends with a double bar line.

fQ gQ

A musical staff with a treble clef. It contains five notes: a quarter note on the second line (F4), a quarter note on the second space (G4), a quarter note on the second space (G4), a quarter note on the second space (G4), and a quarter note on the second space (G4). The staff ends with a double bar line.

fQ1 gQ1 fQ2 gQ2 gQ1FE

A musical staff with a treble clef. It contains six notes: a quarter note on the second line (F4), a quarter note on the second space (G4), a quarter note on the second space (G4), a quarter note on the second space (G4), a quarter note on the second space (G4), and a quarter note on the second space (G4). The staff ends with a double bar line.

fS2 gS2 fS3 gS3 gvF!eS2 gvF!eS3