

This test data is helpful to demonstrate some of the issues we have previously brought up.

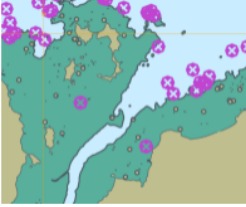
There are some encoding errors in the datasets (mostly invalid dates), but those can be fixed later. None of the datasets have multiple dataCoverage features, so many of the issues we pointed out will not be tested.

There are issues with the SCAMIN encoding wrt to the dataset scales, causing some lights to "disappear" at certain scales:

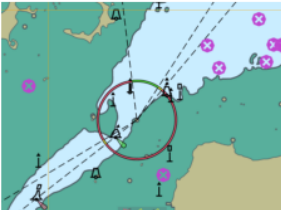
- 1:90k:



- 1:45k:

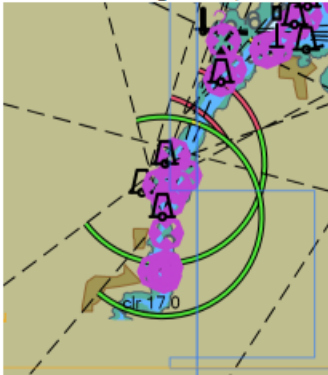


- 1:22k:

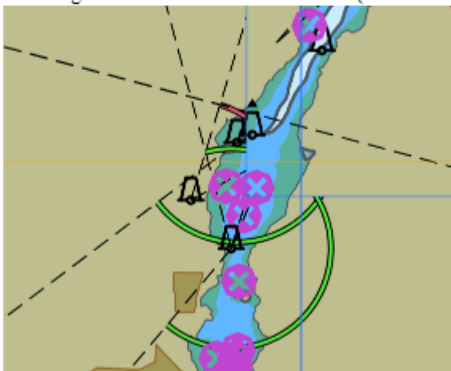


An example of obscured light arcs/leg lines:

- 101FR00471520 @ 1:90k (dataCoverage range is 45k-90k)



- Zooming to 1:45k adds 101FR00571270 (dataCoverage range is 22k-45k) in the upper right. Arcs and leg lines are truncated by the better scale dataset.



- Another example of truncated leg lines (dataset on the right is better scale). Note that this issue can only be avoided if both datasets have the same maximum display scale, or if the dataset on the left has better scale than the dataset on the right. In S-57 this issue can be avoided by having the two datasets share the same navigational purpose (regardless of scale).

