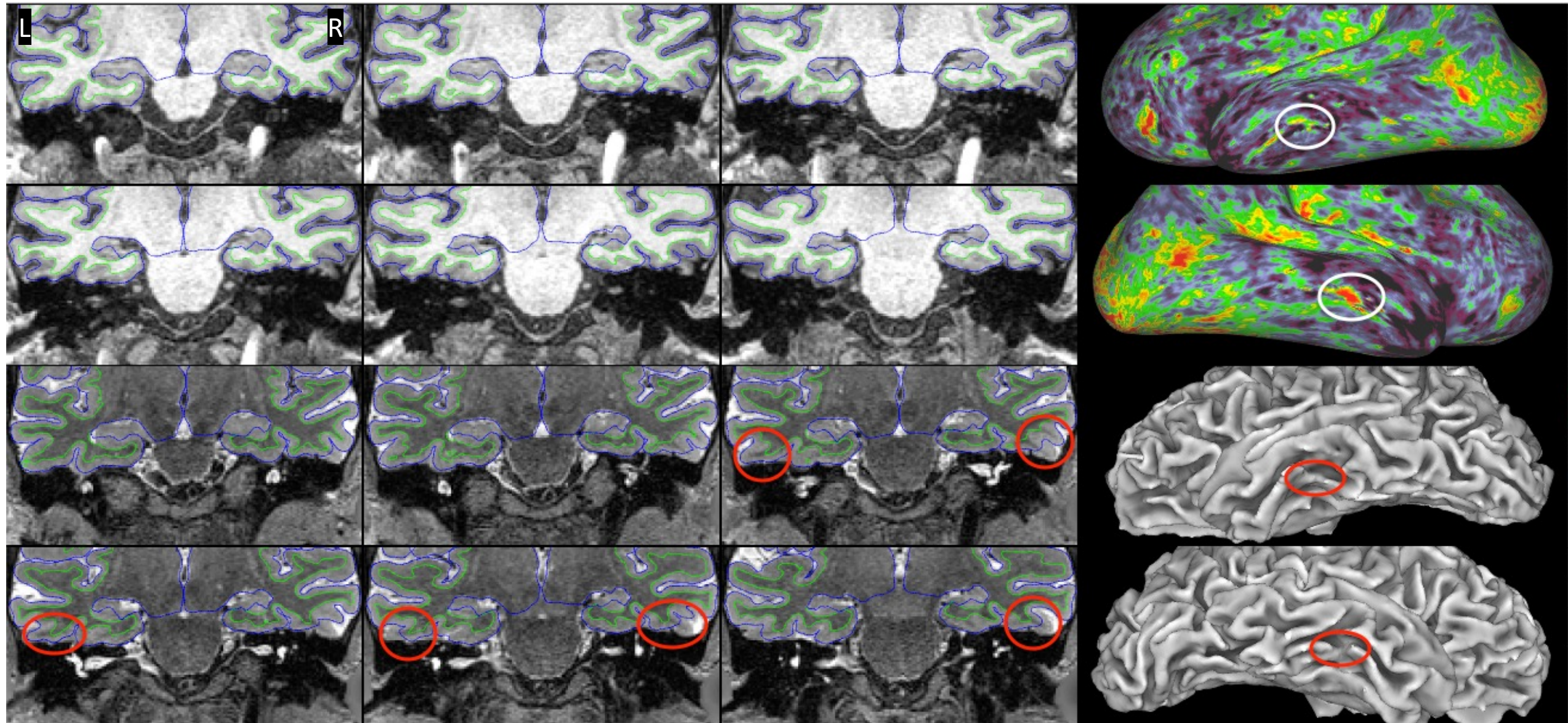


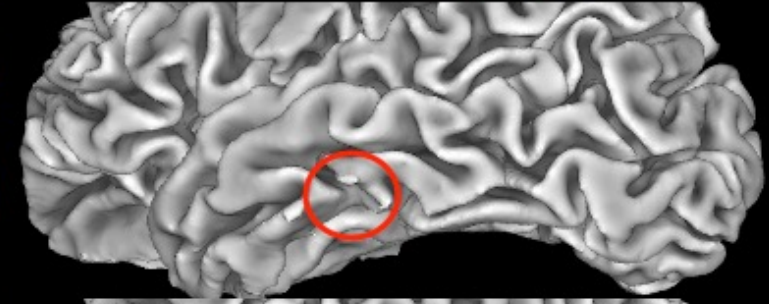
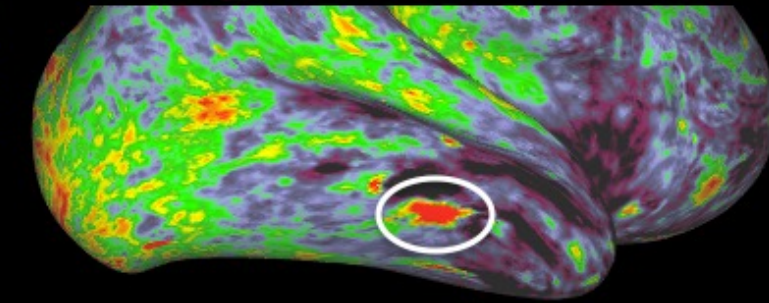
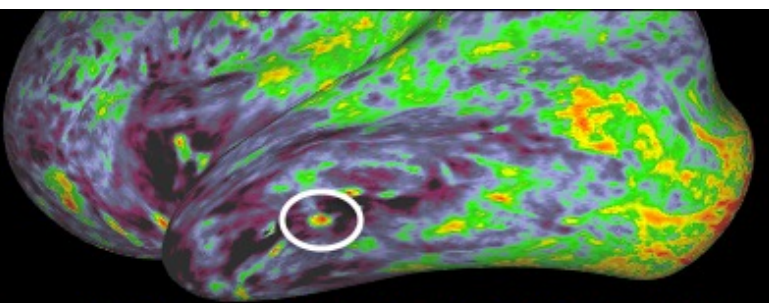
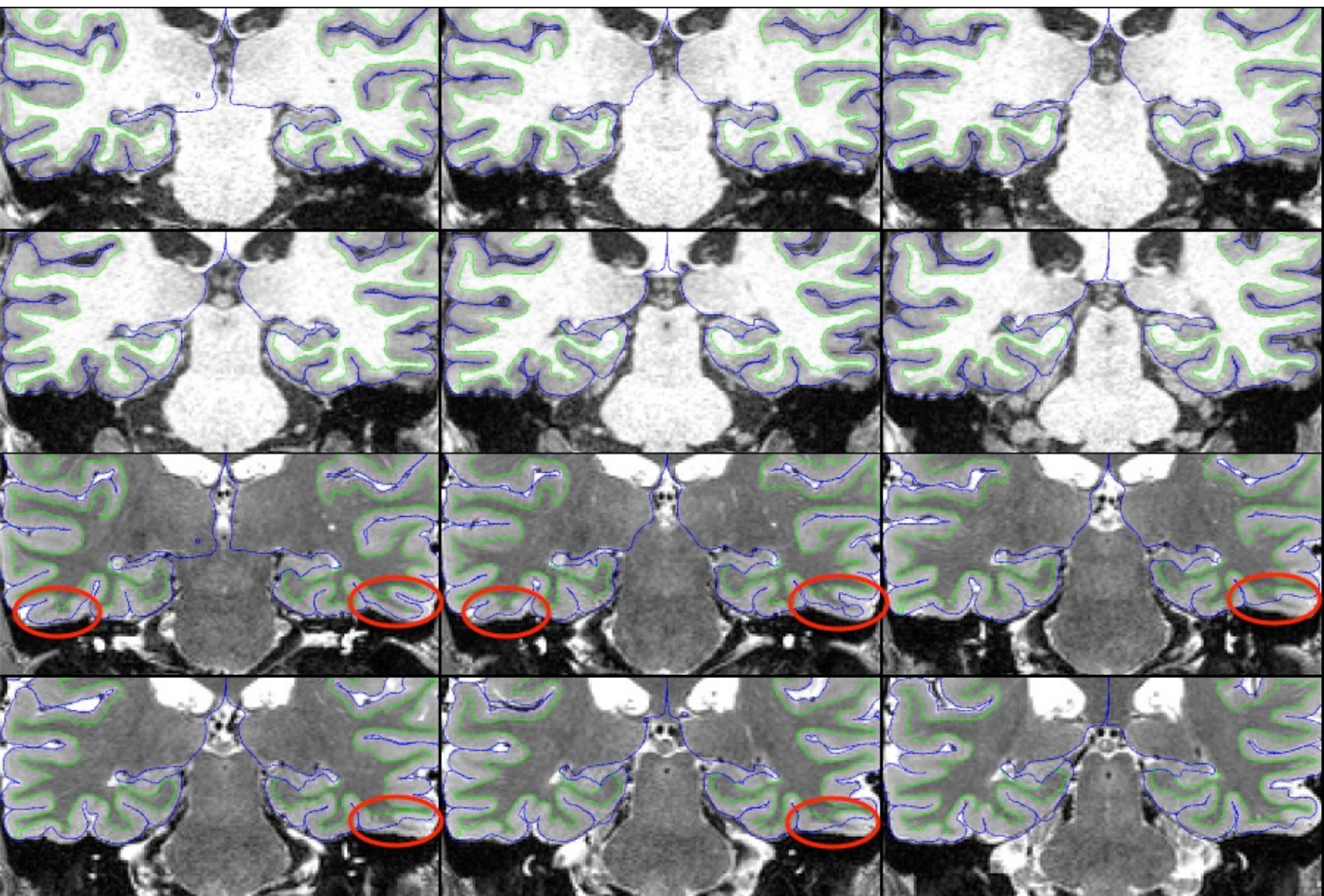
HCP Lifespan Issue Codes

A	Anatomical Anomalies					
B	Surface imperfections (unedited)					
B1	White surface imperfections					
	B1a	white surface too deep				
	B1b	white surface too superficial				
	B1c	other - missed gyri or sulcus				
B2	Pial surface imperfections					
	B2a	pial surface too deep				
	B2b	pial surface too superficial - blood vessel & sinus inclusion				
	B2c	pial surface too superficial - dural inclusion				
B3	white & pial surface errors due to VR spaces or white matter hyper/hypointensities					
C	Myelin Map Quality Issues					
C1	choppy due to T1/T2 intensity issues					
C2	choppy due to low scan quality					
C3	aging effects (atrophy, large ventricles, wm hyper/hypo intensities)					
C4	choppy/streaking due to motion					
C5	Freesurfer central sulcus misidentified, fixed by MSMAll					
				E	Manually Edited	
D	Miscellaneous Issues				E1	wm.mgz
D1	FNIRT registration issues				E2	brainmask.mgz
					E3	control points added

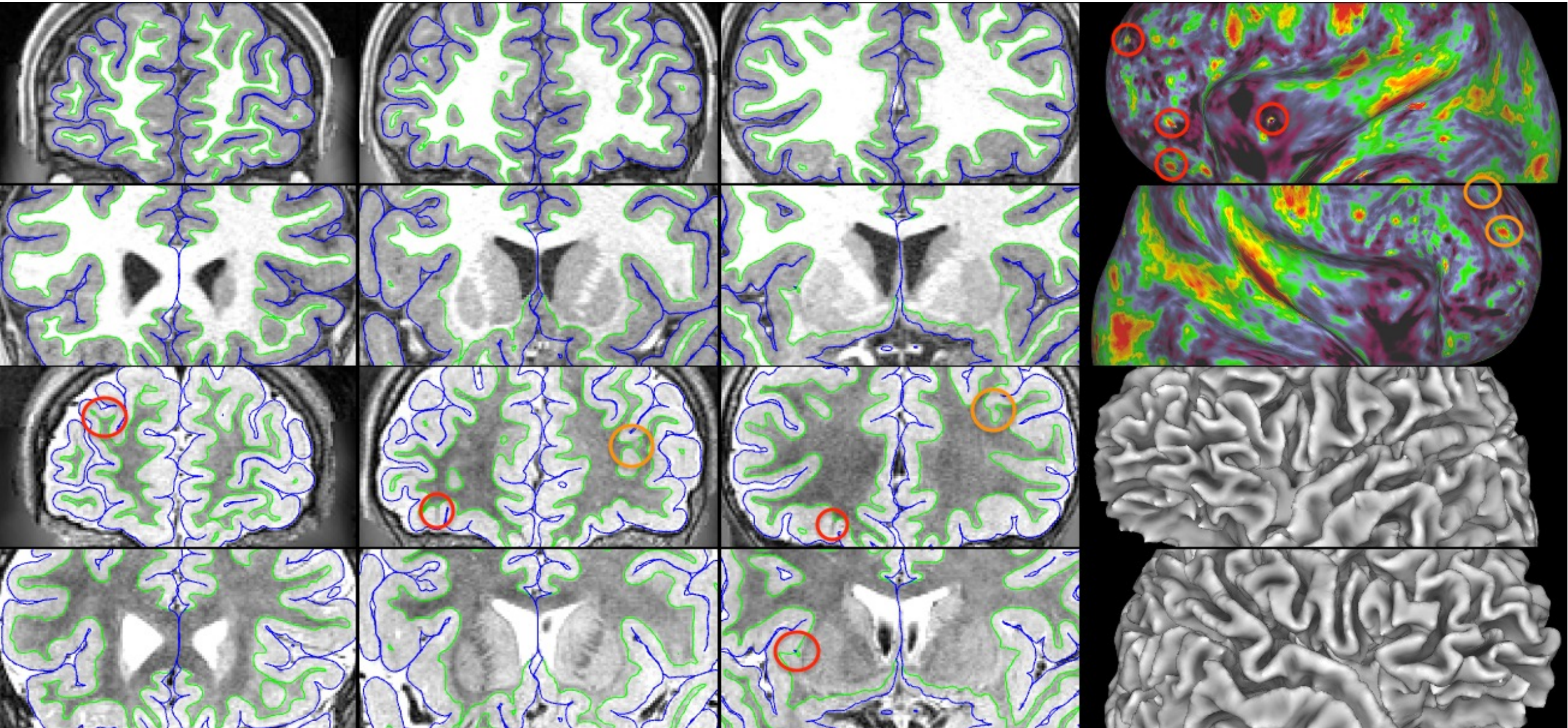
HCA9071068_V1: temporal lobe blemishes due to white & pial too deep (B1a;B2a)



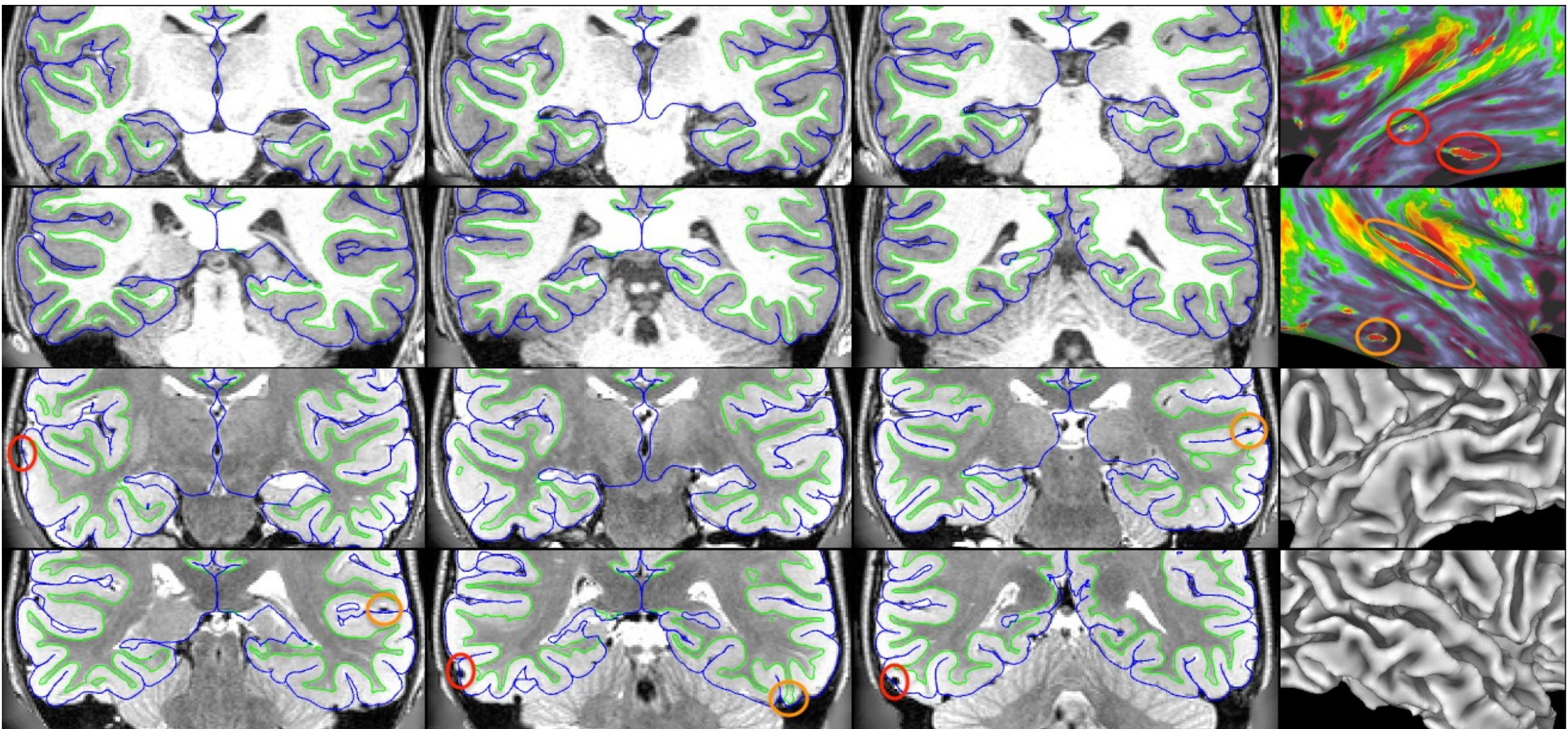
HCA7845291_V2: temporal lobe blemishes due to white & pial too deep (B1a;B2a)



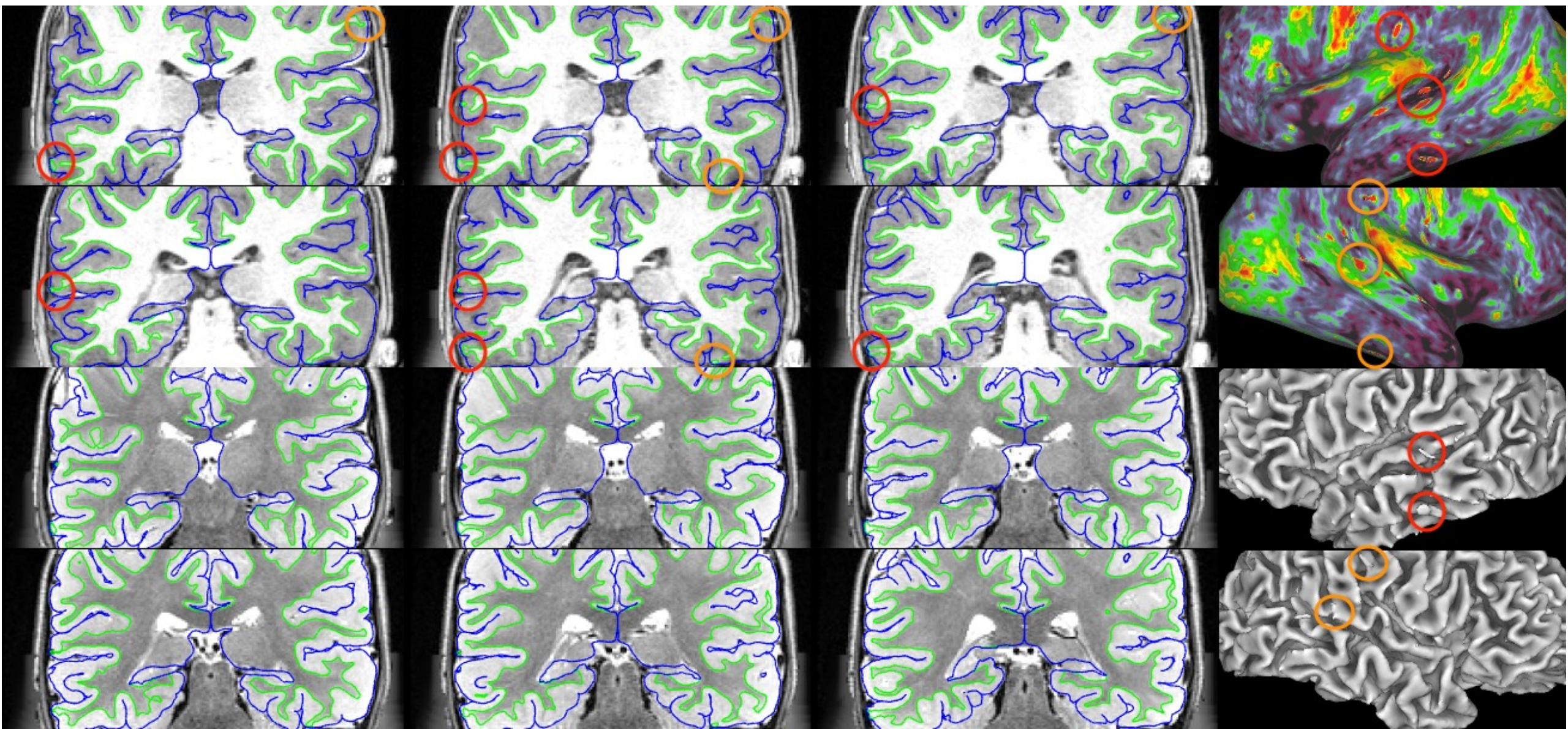
HCD2642858_V1: bilat blemishes due to white & pial too deep (B1a;B2a)



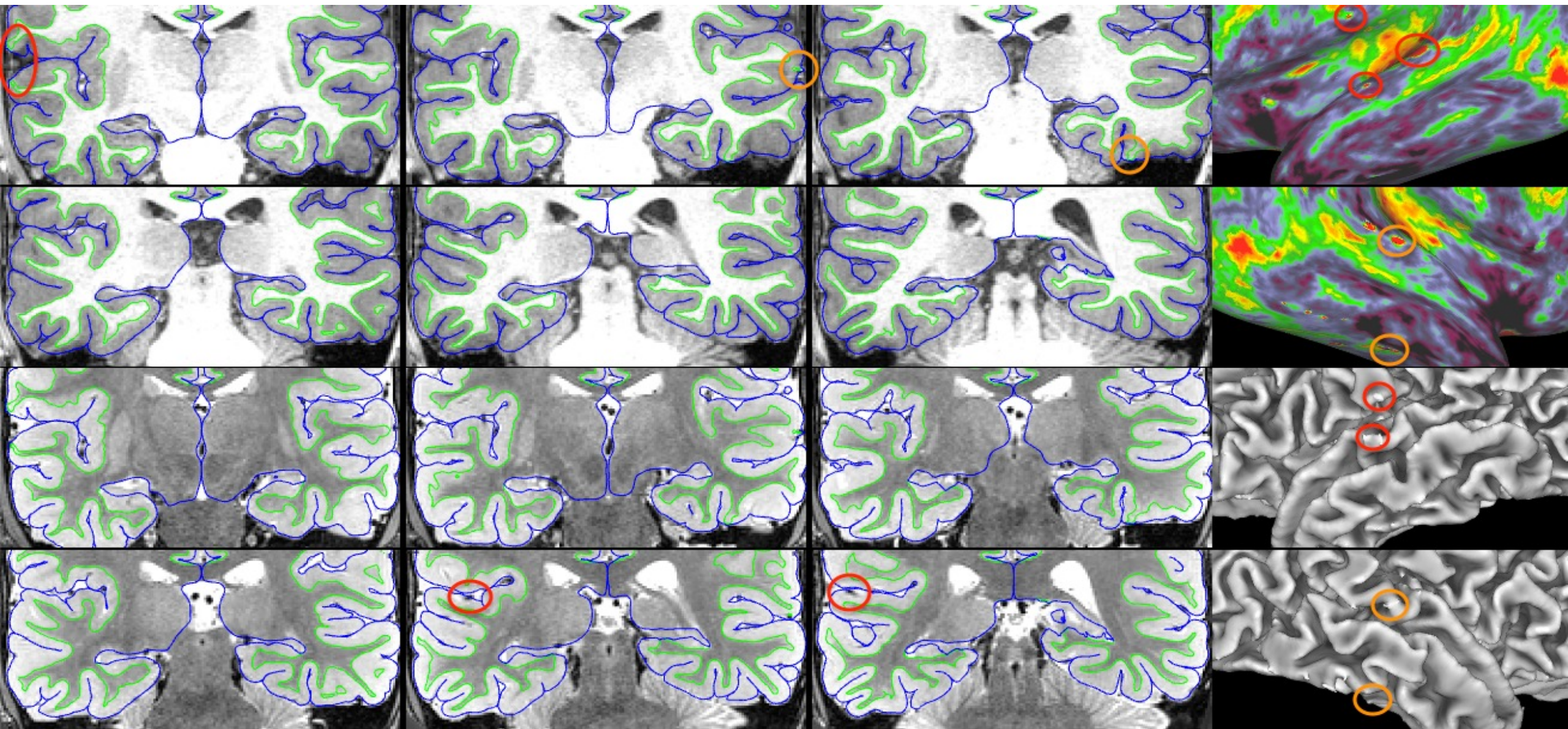
HCD0580751_V1: bilat blemishes due to white &/or pial too superficial (B1b;B2b); B2b in this example is including blood vessels



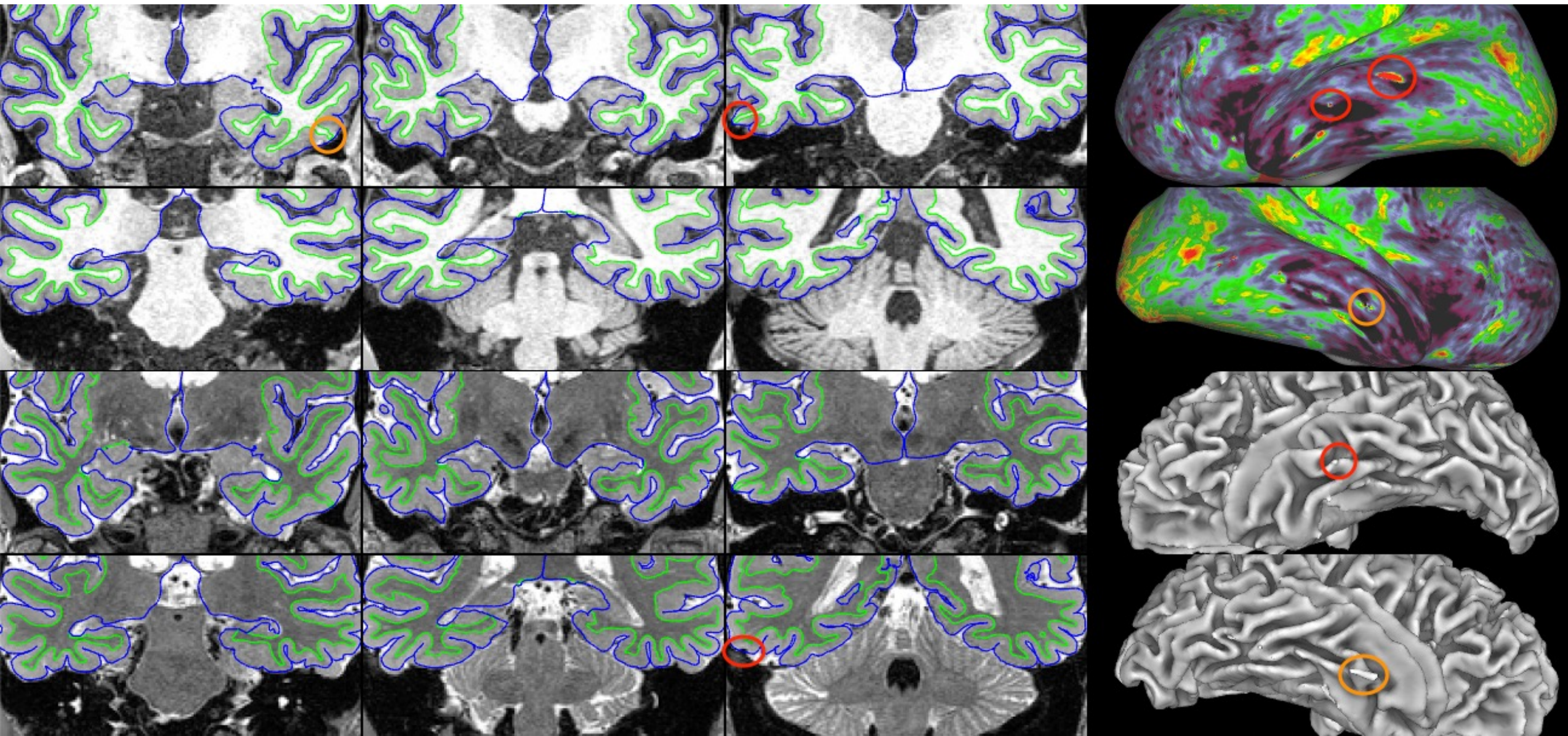
HCD1045128_V1: bilat blemishes due to white &/or pial too superficial (B1b;B2b); B2b in this example is including blood vessels



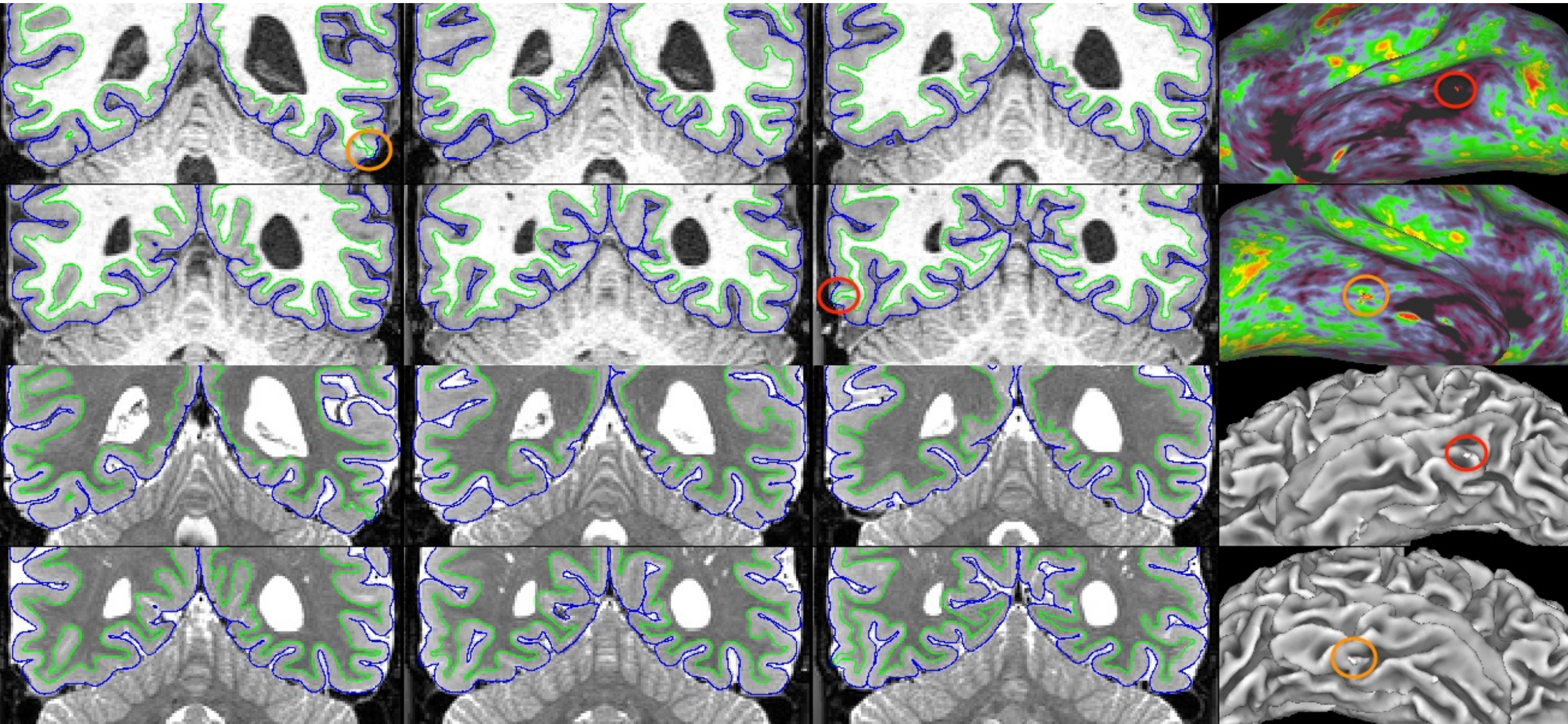
HCD2562658_V1: bilat blemishes due to white &/or pial too superficial (B1b;B2b); B2b in this example is including blood vessels in L STG



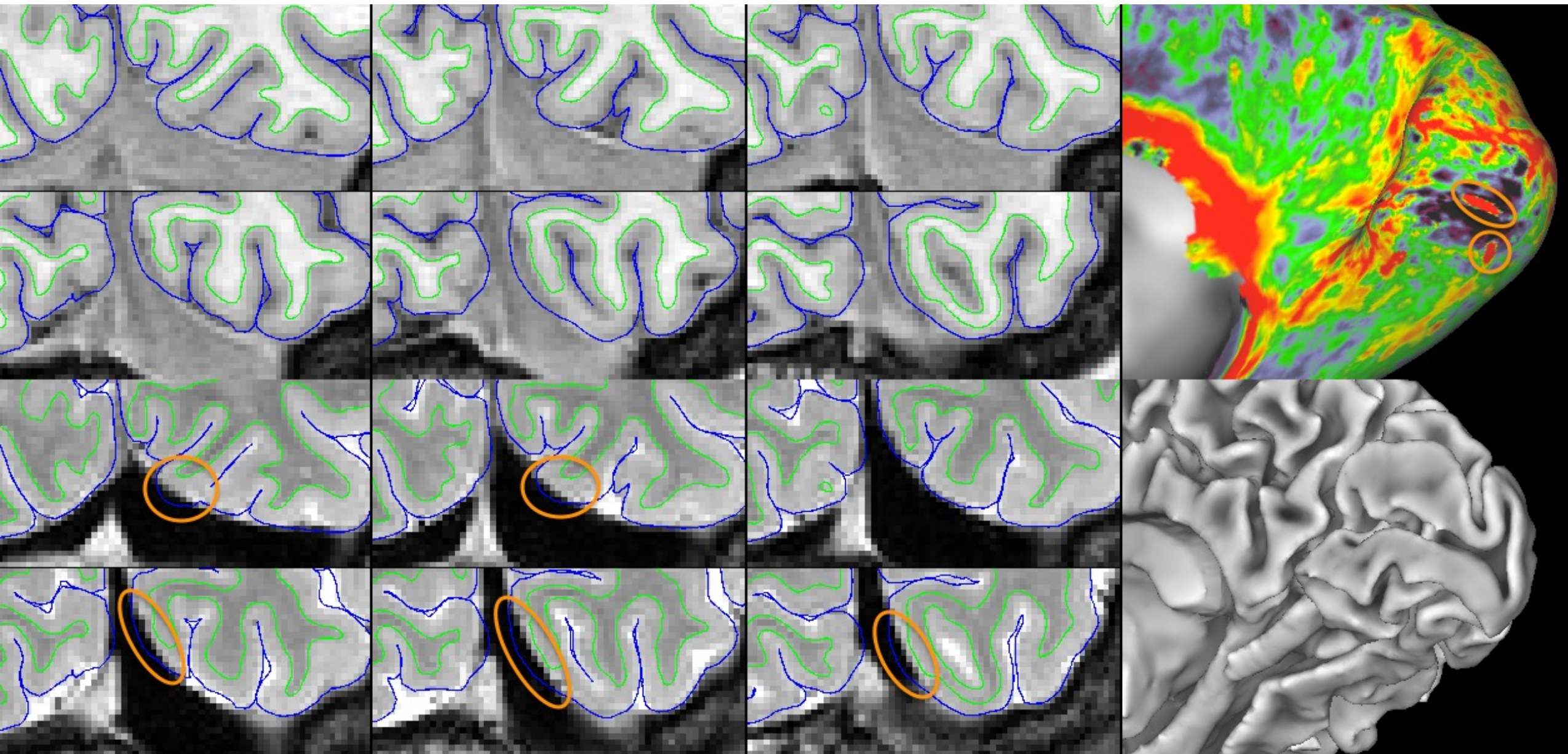
HCA8402666_V1: temporal lobe blemishes due to white &/or pial too superficial (B1b;B2b); B2b in this example is including blood vessels



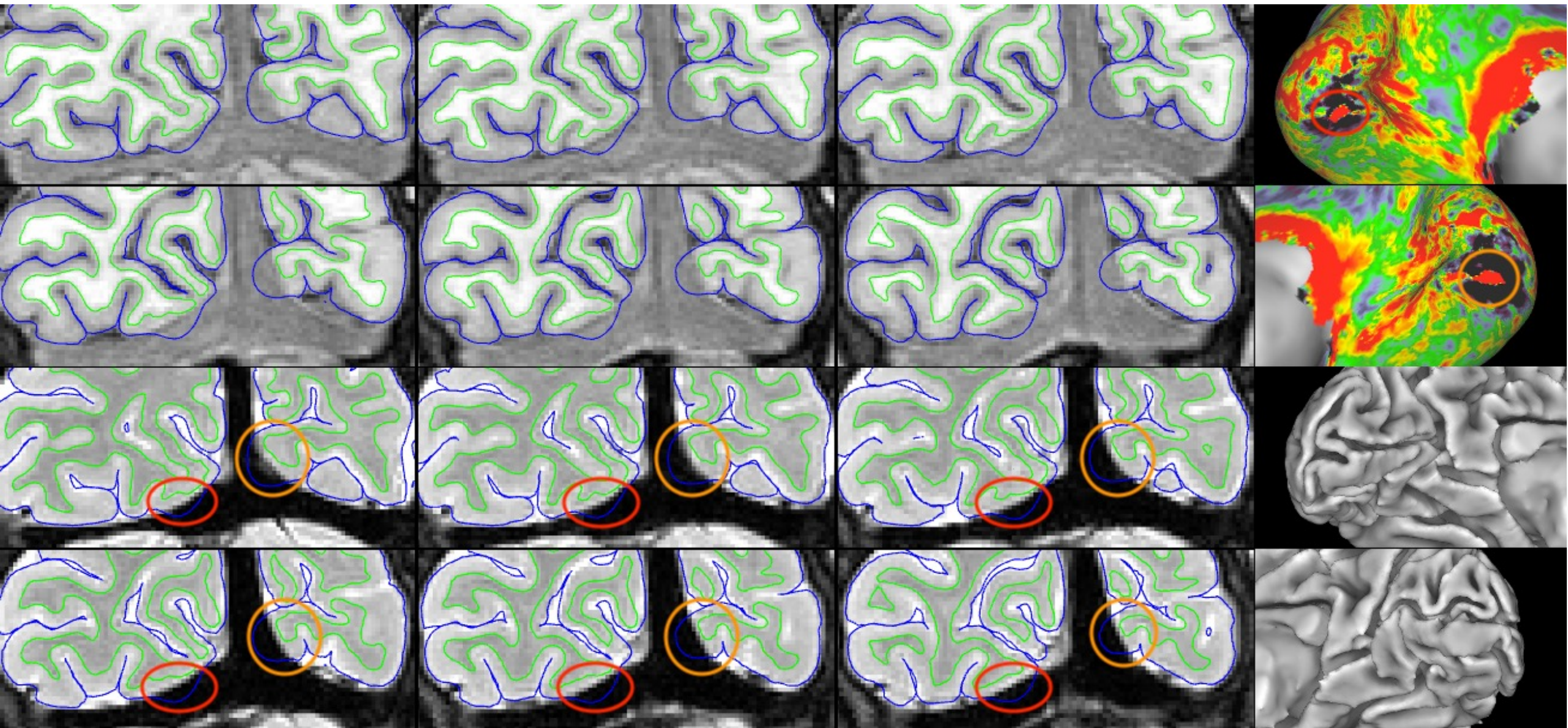
HCA8034663_V1: temporal lobe blemishes due to white &/or pial too superficial (B1b;B2b)



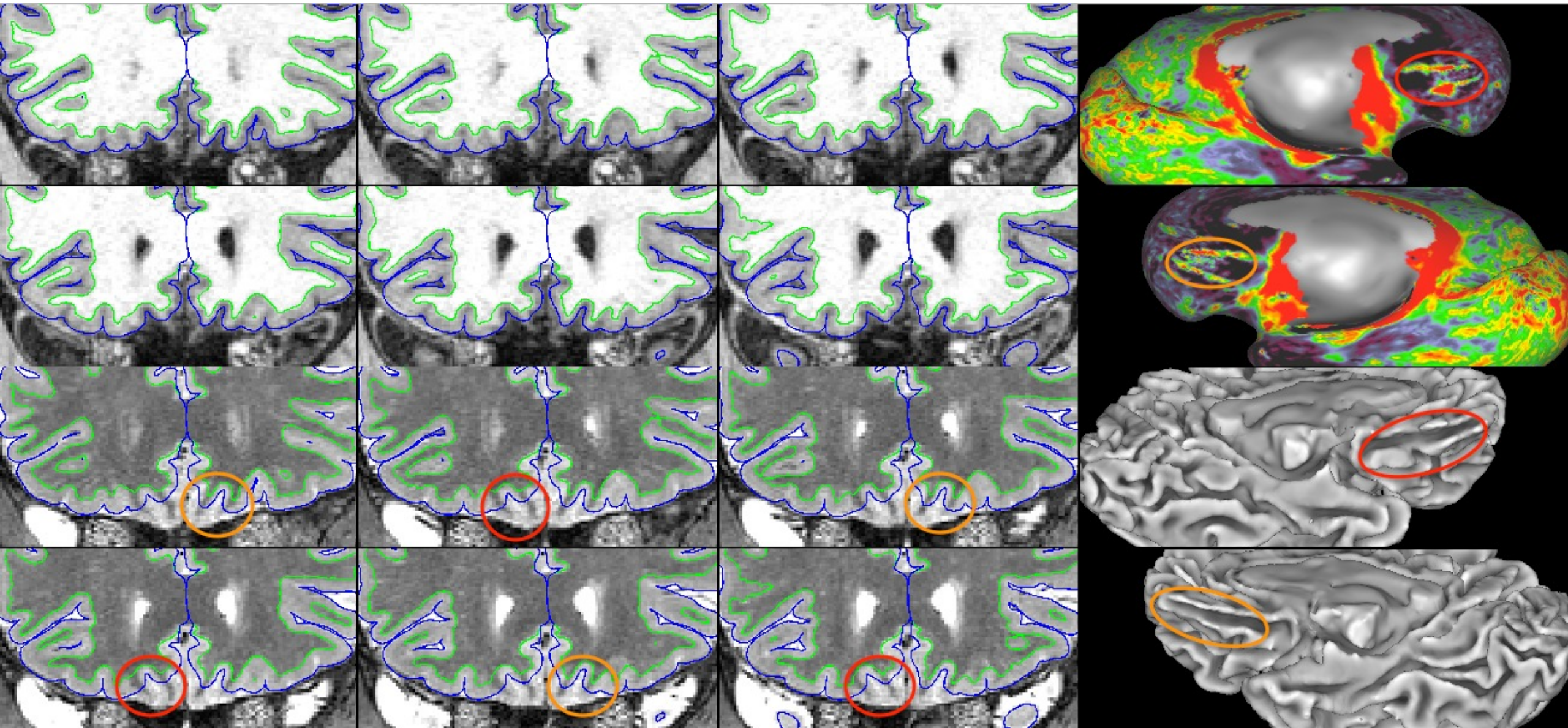
HCD2259455_V1: R occipital pole blemish due to pial too superficial (B2b)



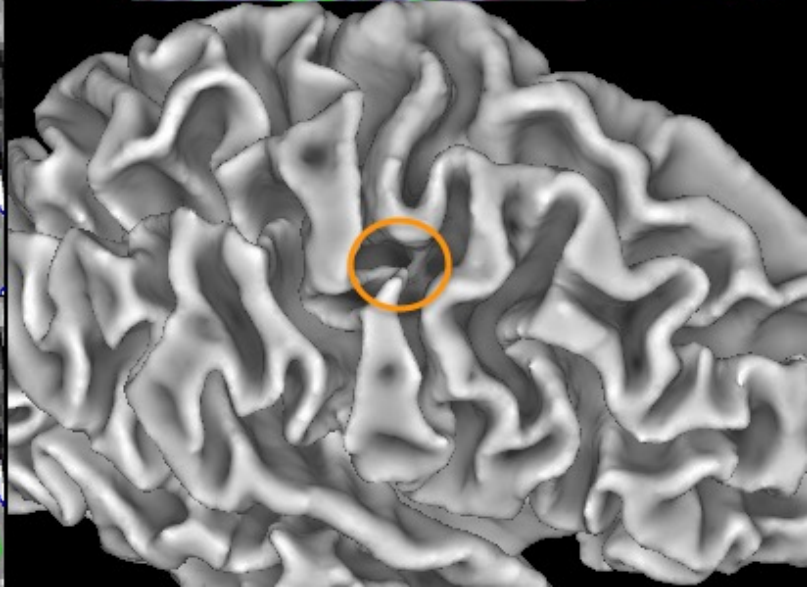
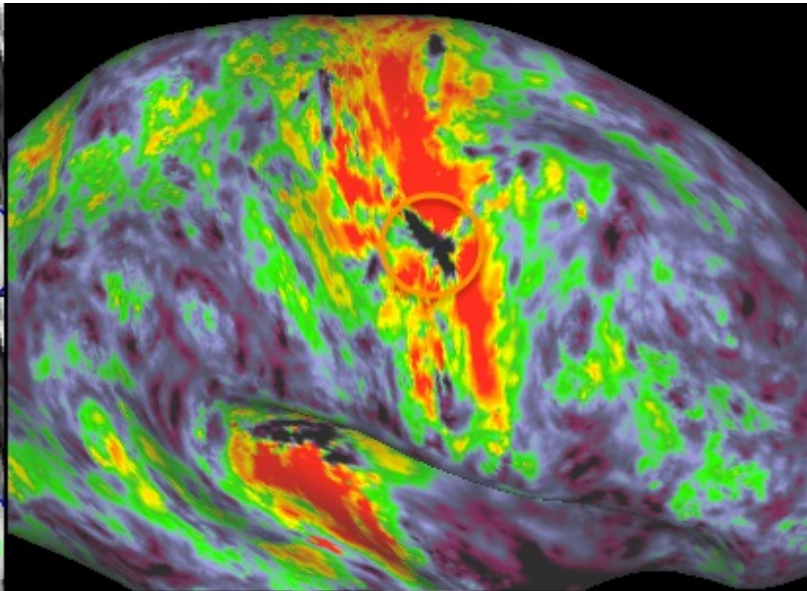
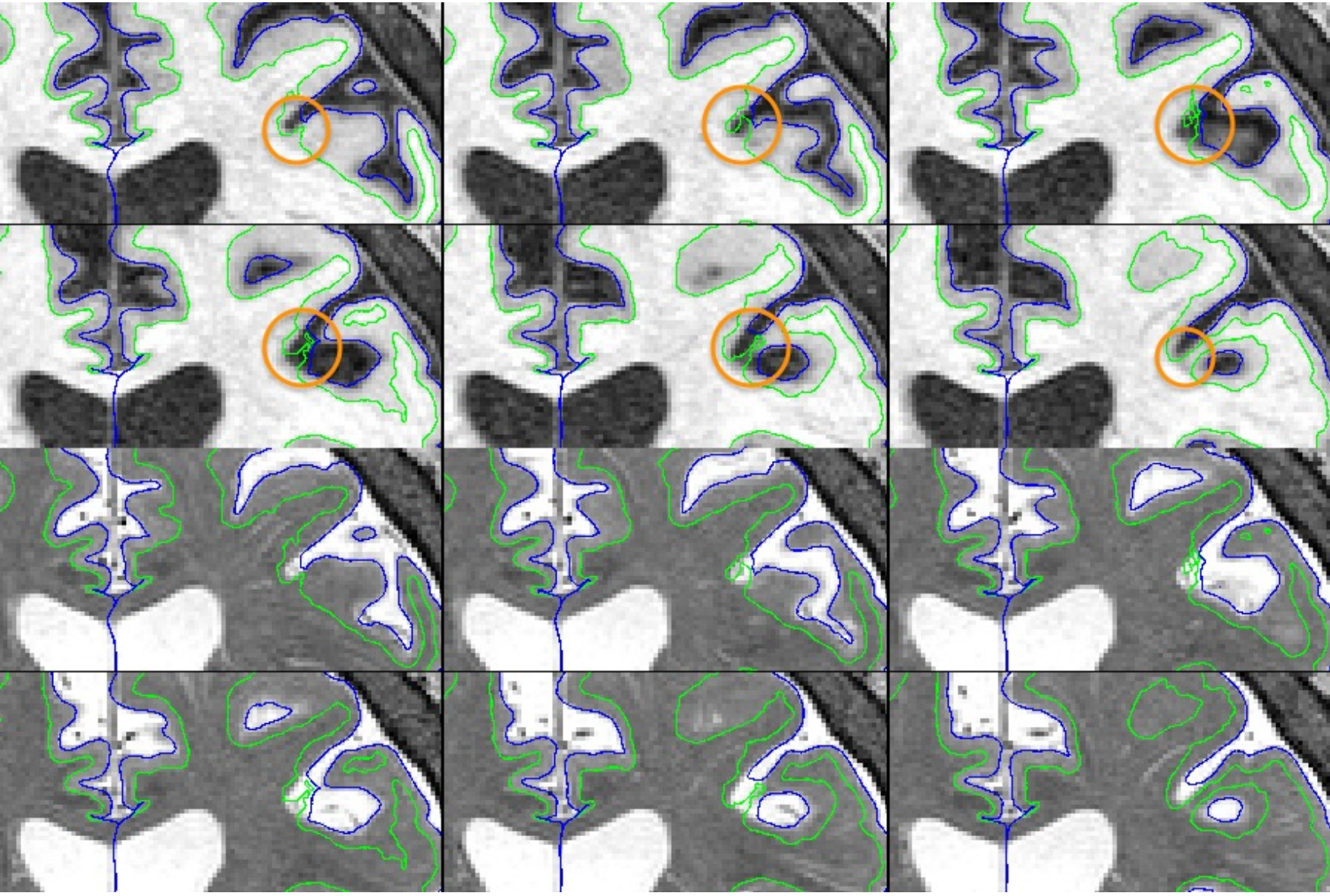
HCD0305628_V1: bilat occipital pole blemishes due to pial too superficial (B2b)



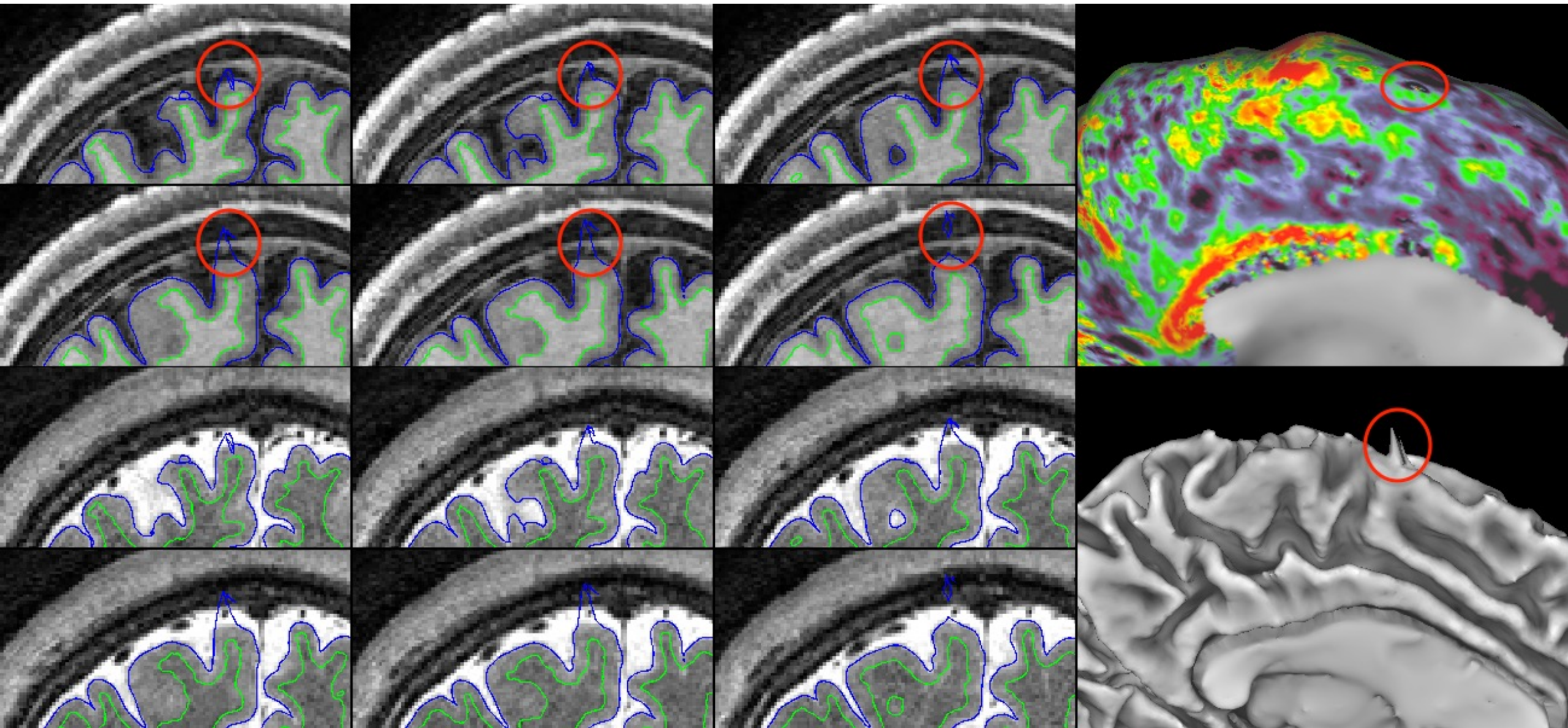
HCA6688600_V1: bilat medial orbitofrontal & gyrus rectus partially missed (B1c)



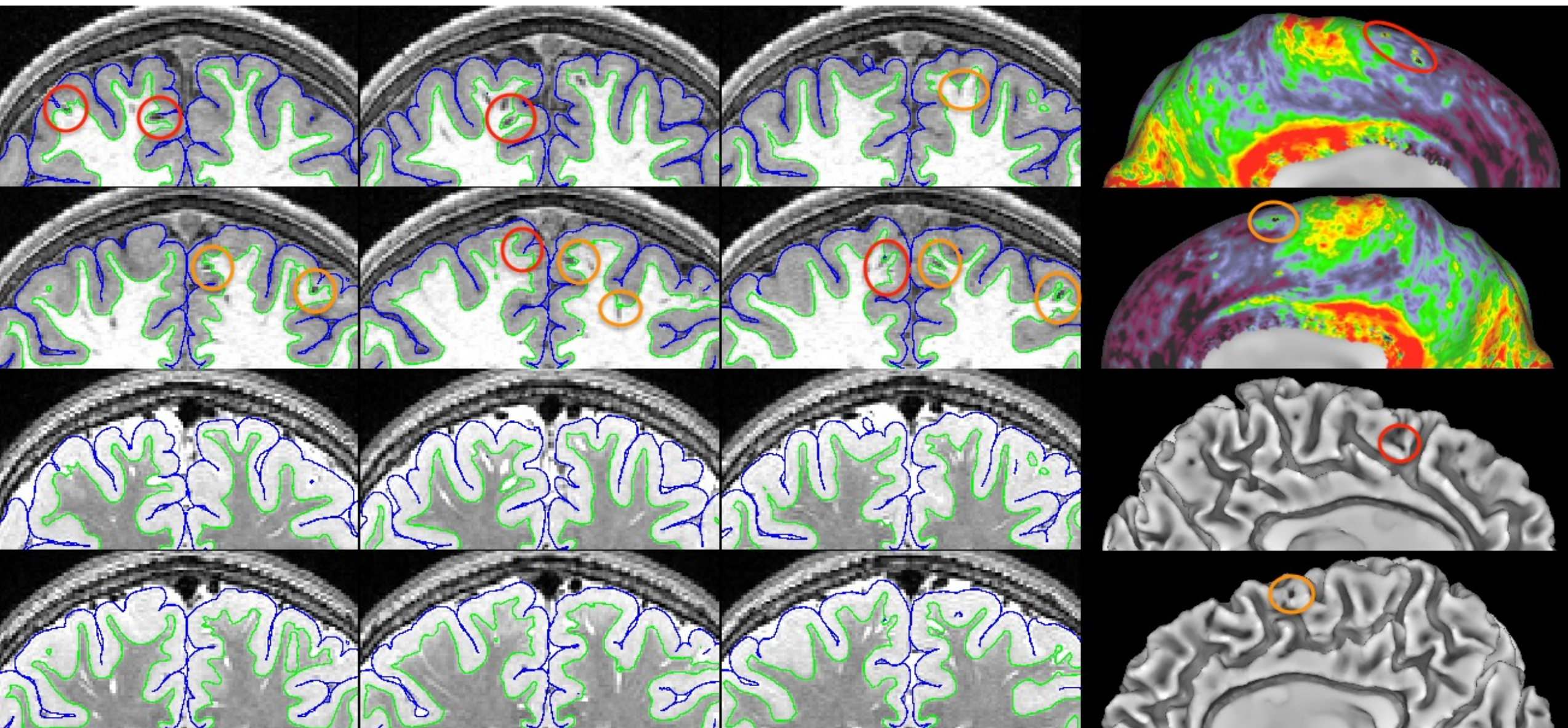
HCA8033560_V2: R CeS blemish (B1c)



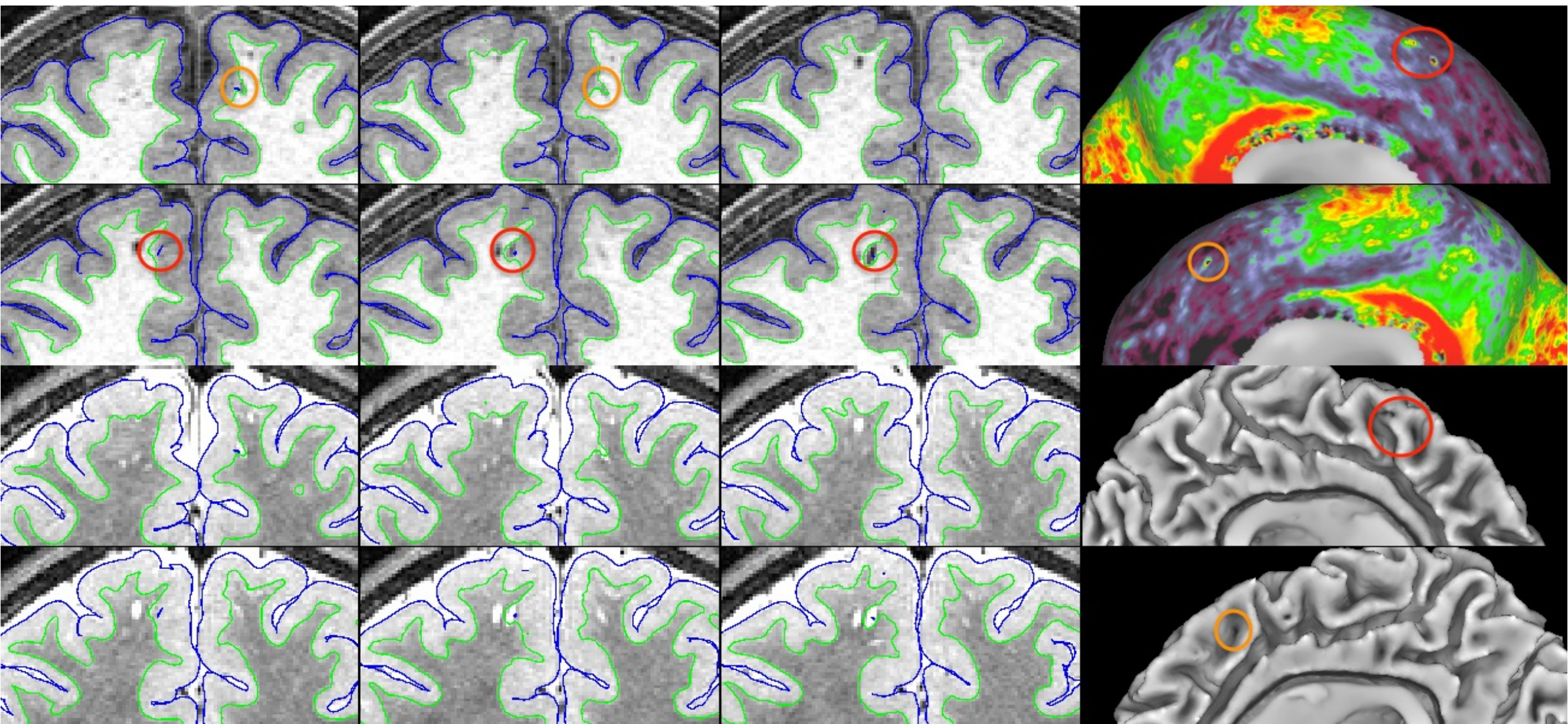
HCA6003238_V1: left dorsal surface spike due to pial too superficial including dura (B2c)



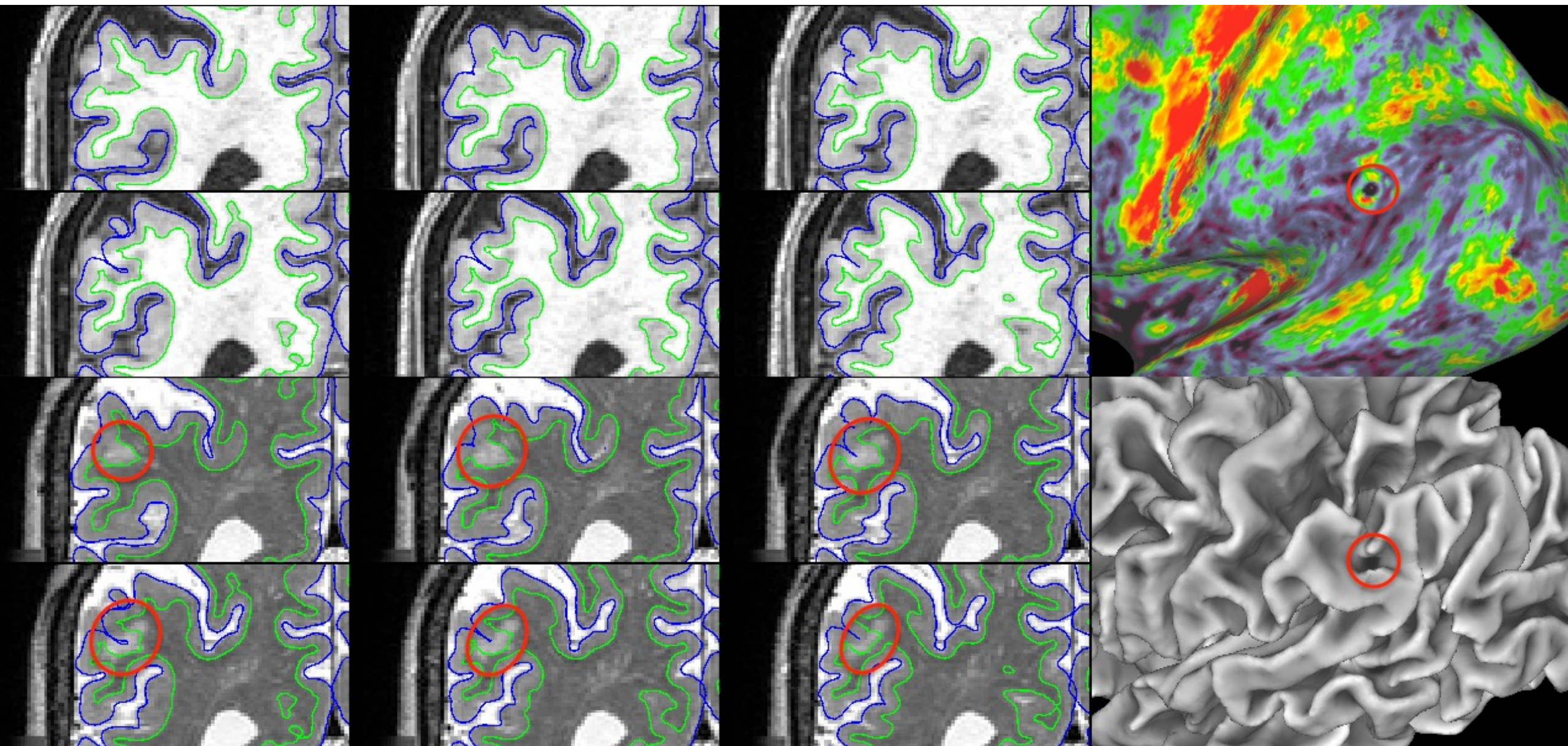
HCD0924858_V1: bilat blemishes mostly due to VR spaces (B3)



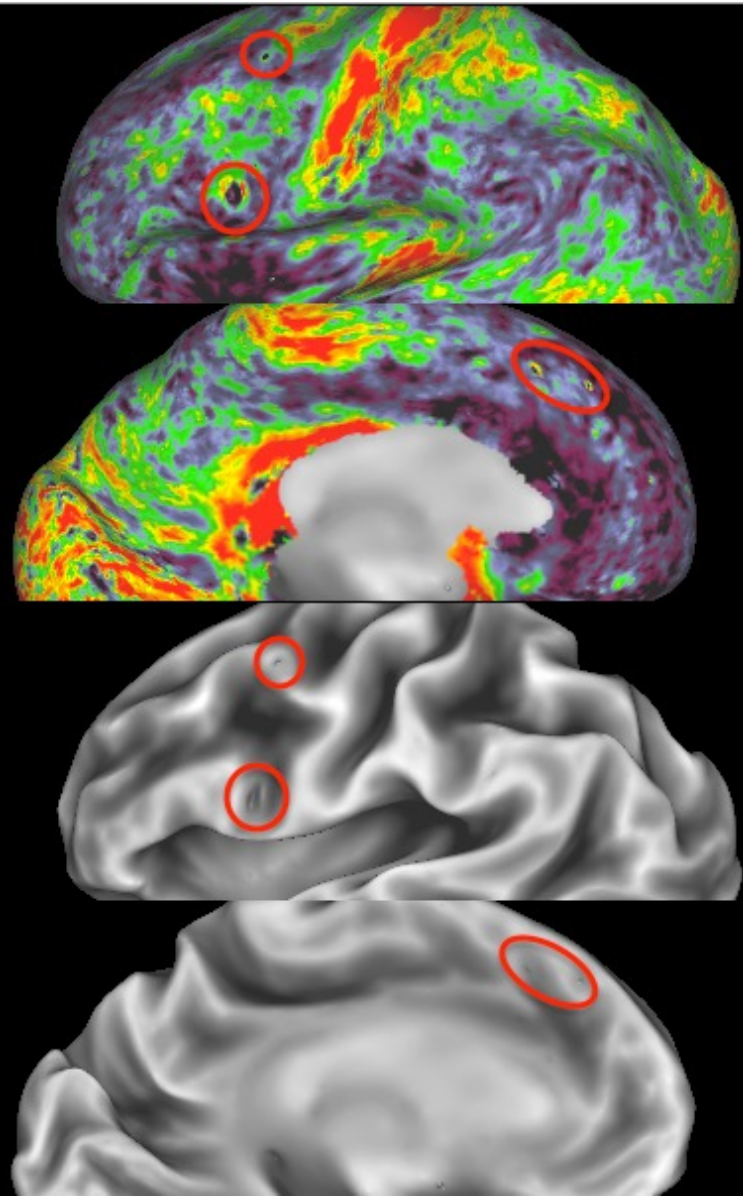
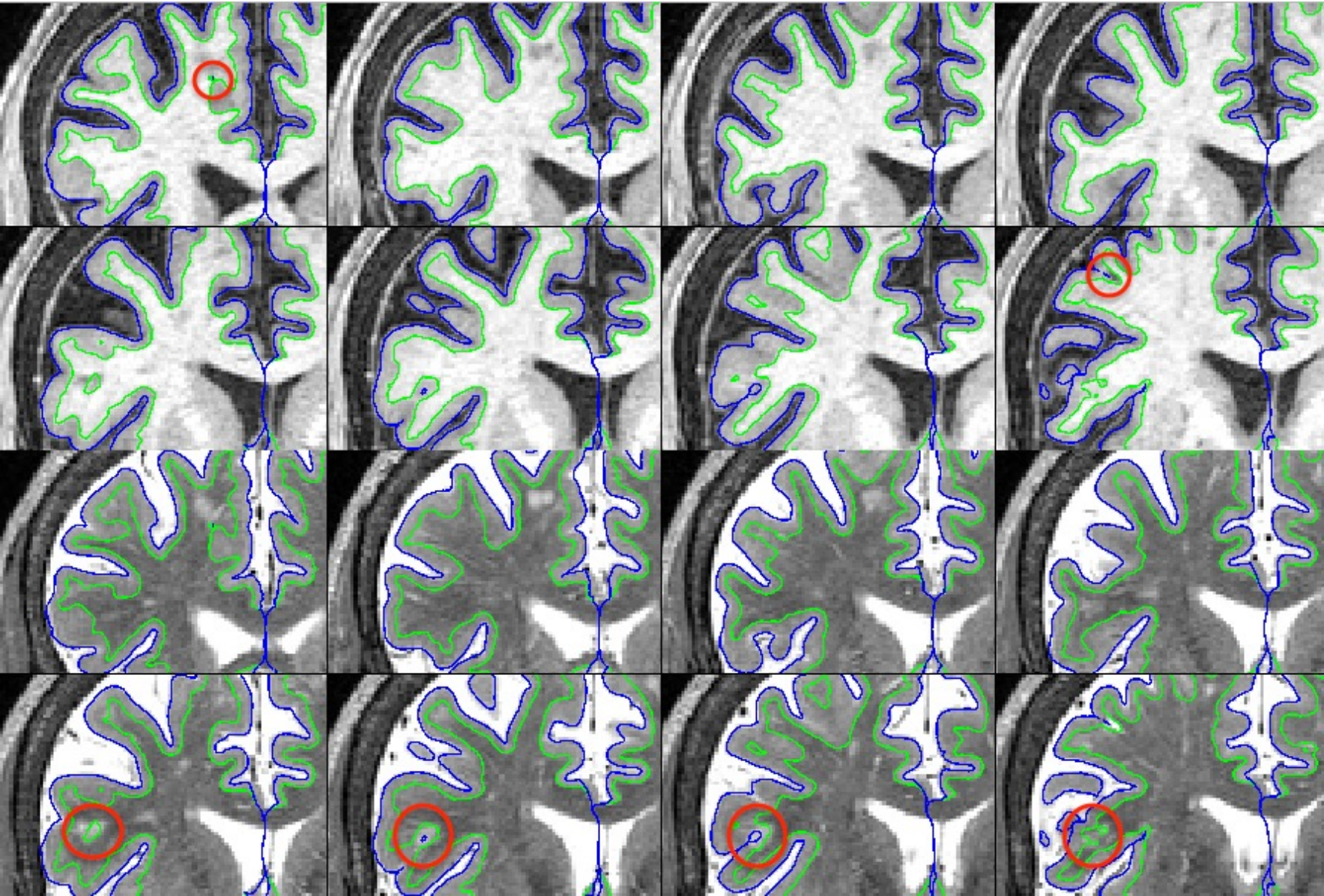
HCD2908062_V1: bilat medial dorsal blemishes due to VR spaces (B3)



HCA7133155_V1: L parietal black spot due to wm age spot (B3)



HCA9140061_V1: blemishes due to wm age spots & VR spaces (B3)



HCA9086990_V2: blemishes due to wm age spots & VR spaces (B3)

