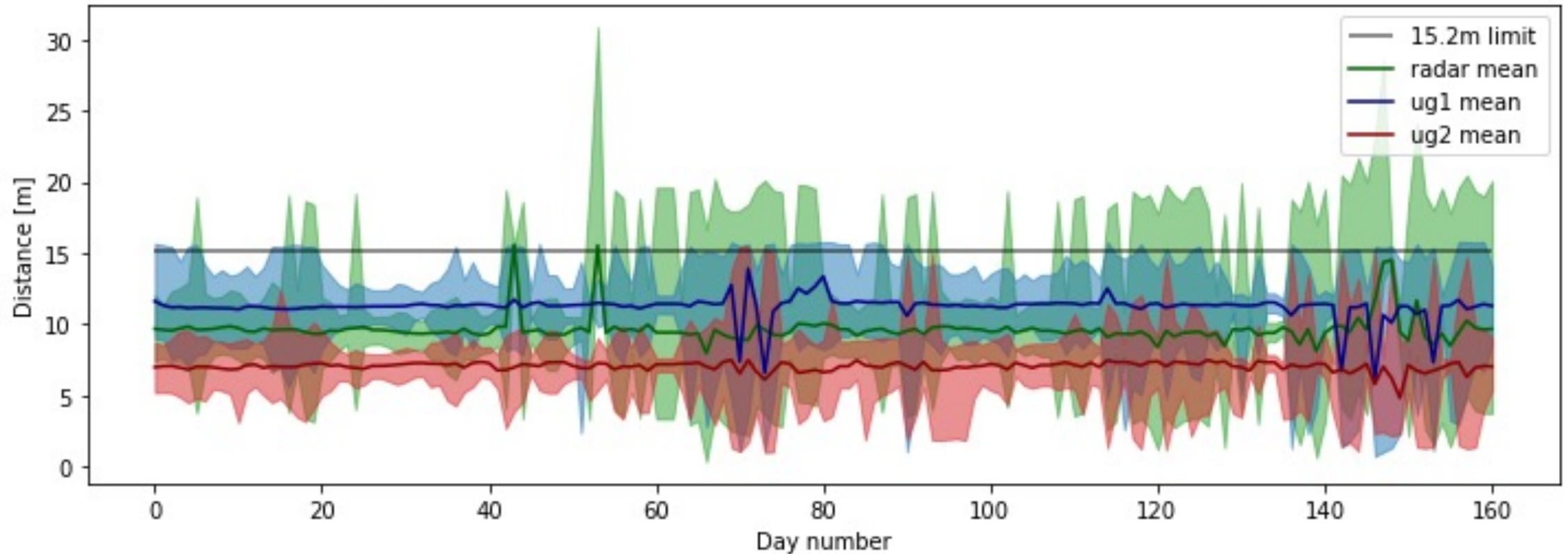
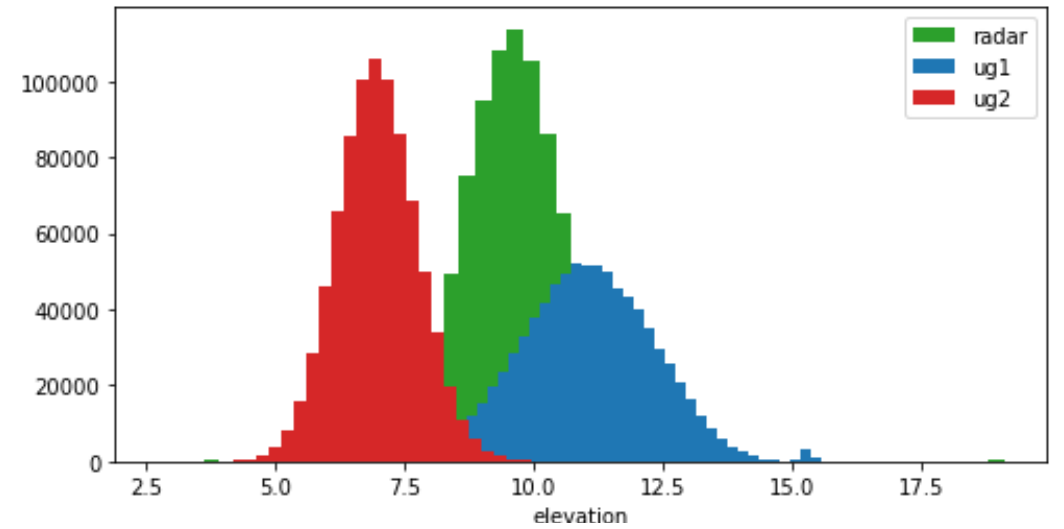
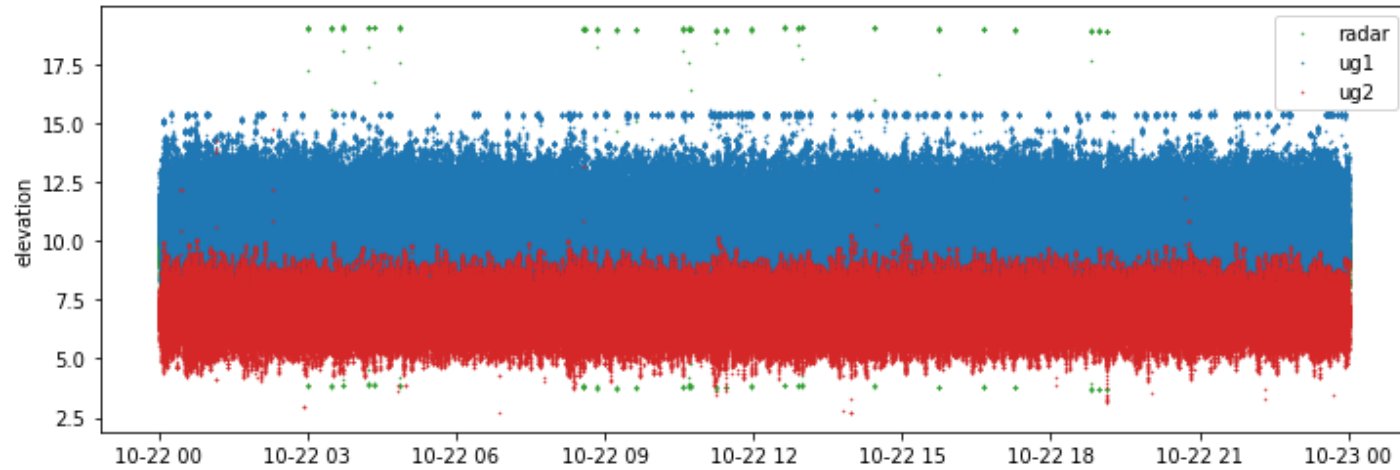


Daily min, max, and mean values

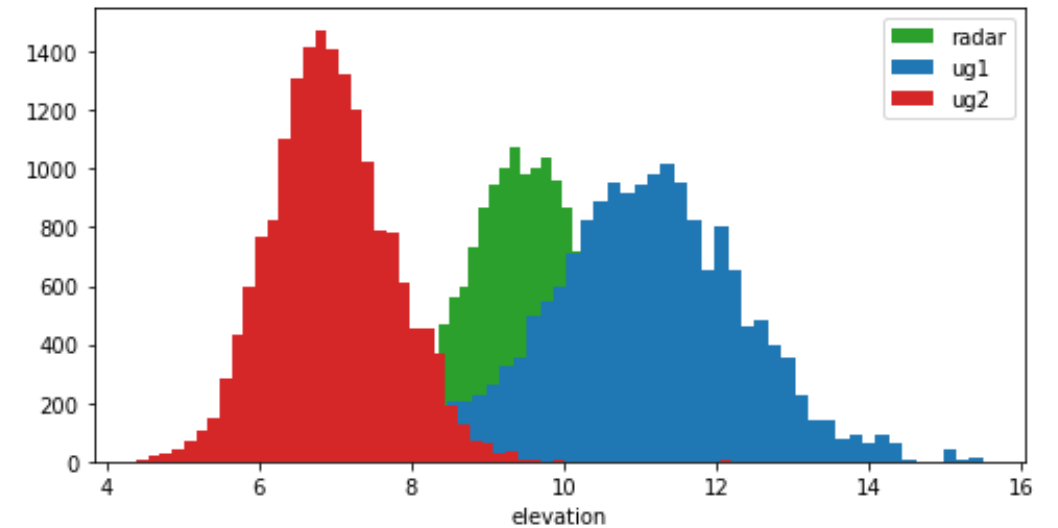
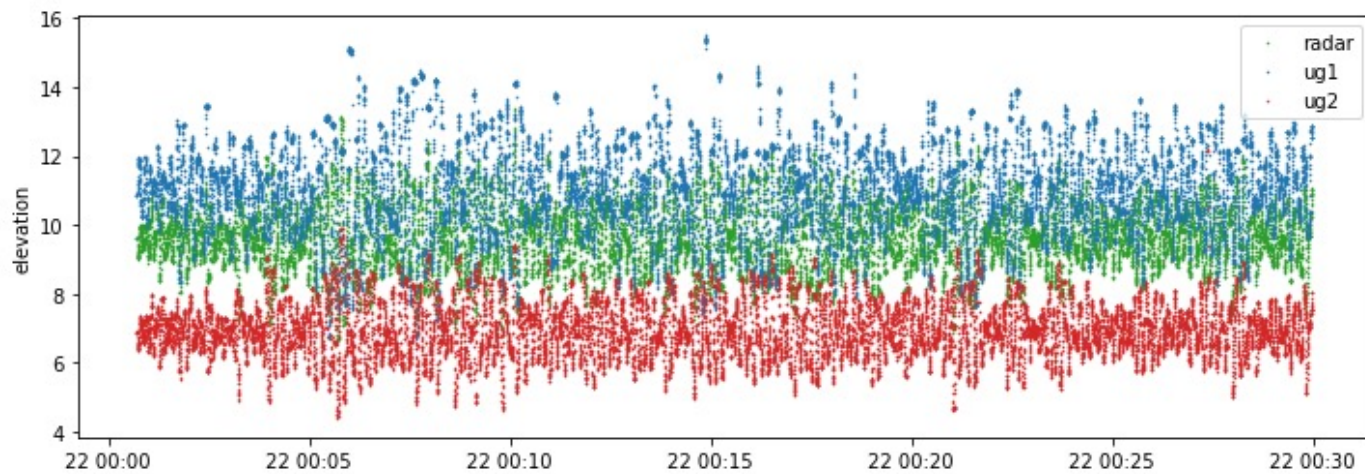
Altimeter	Min	Mean	Max	Exceeding 15.2m
ug1	0.72	9.63	15.78	2.73%
ug2	0.98	7.02	15.50	0.001%
radar	0.33	11.22	30.94	2.89%



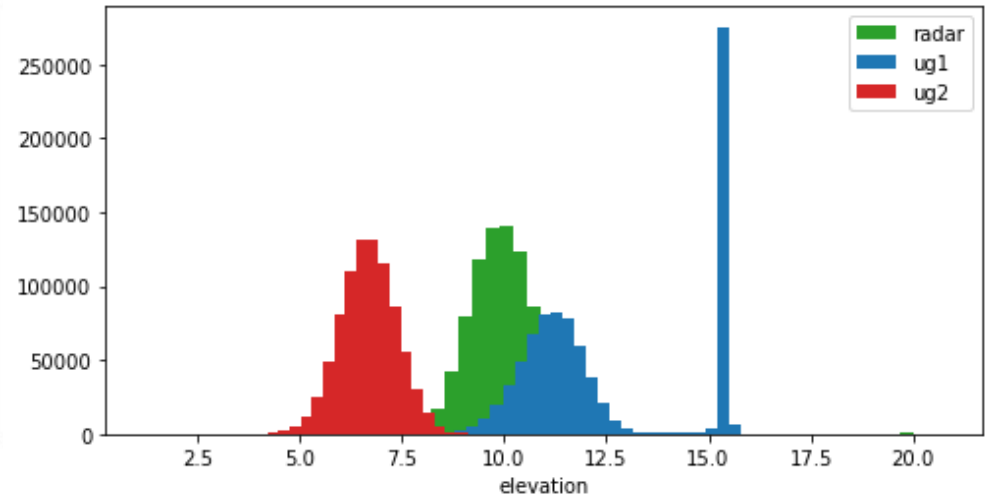
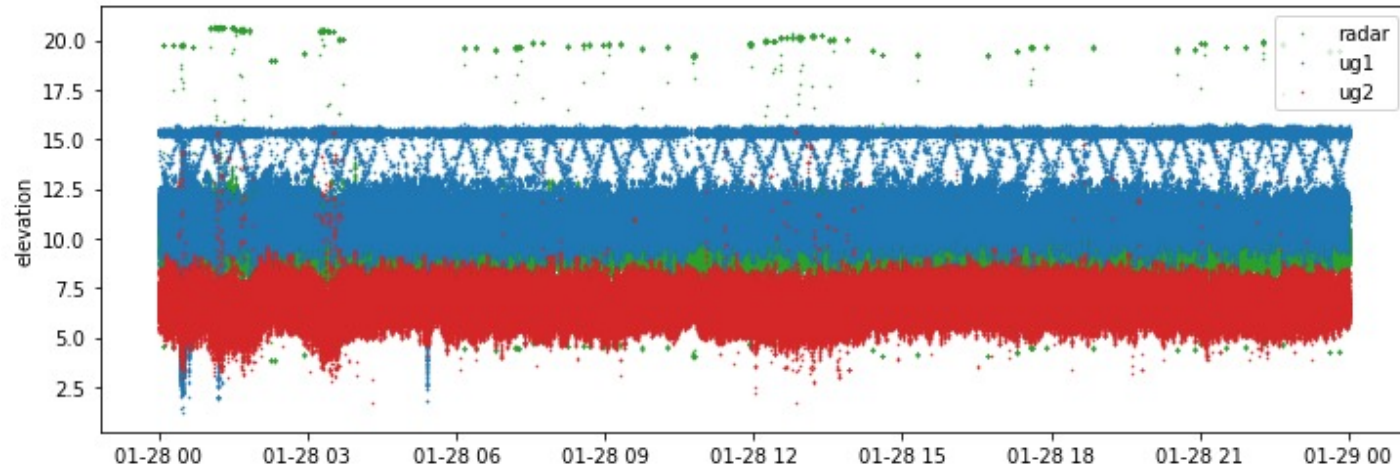
A «calm» day 22.10.2021



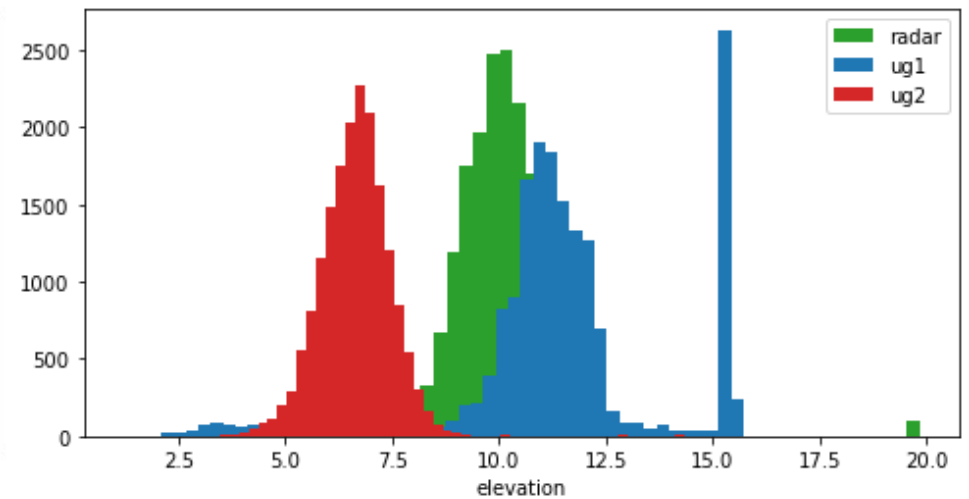
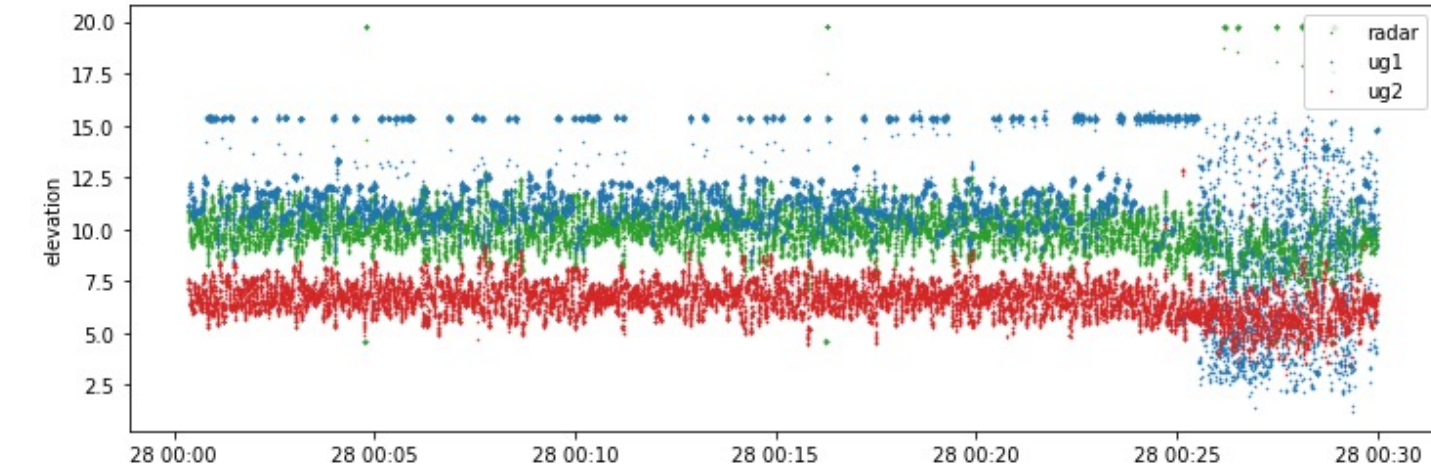
30 minutes of 22.10.2021



A «rough» day 28.01.2022



30 minutes of 28.01.2022

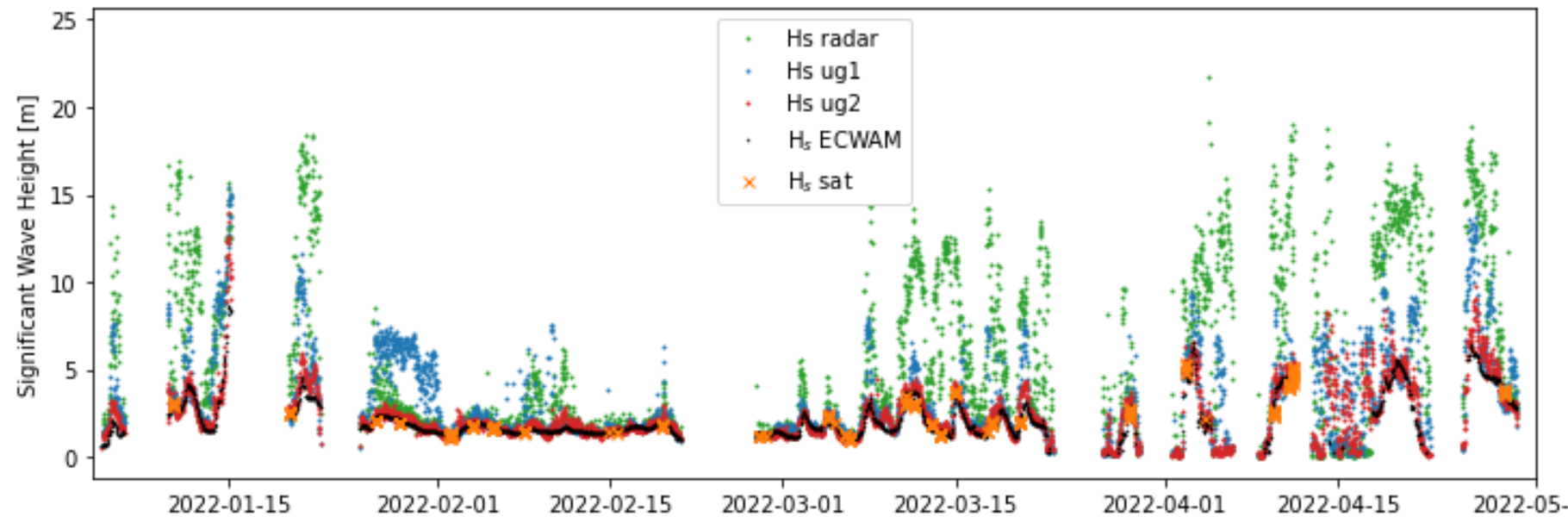


Comparing the three probes

Autumn 2021

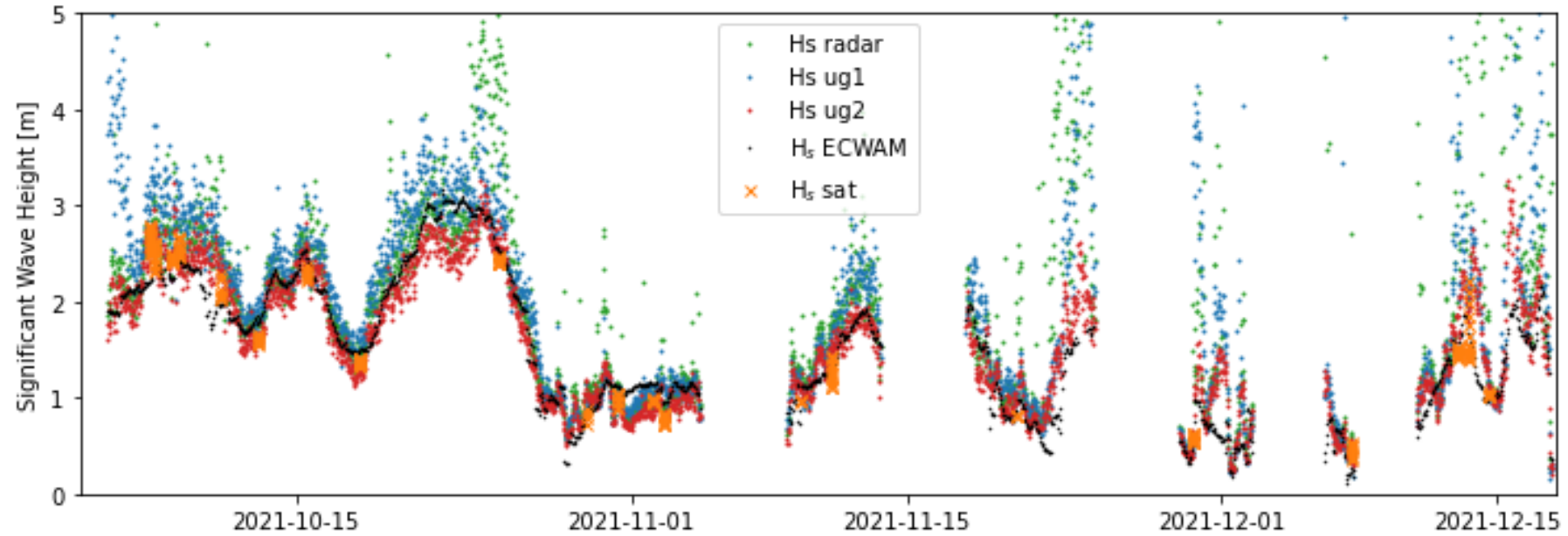


Spring 2022

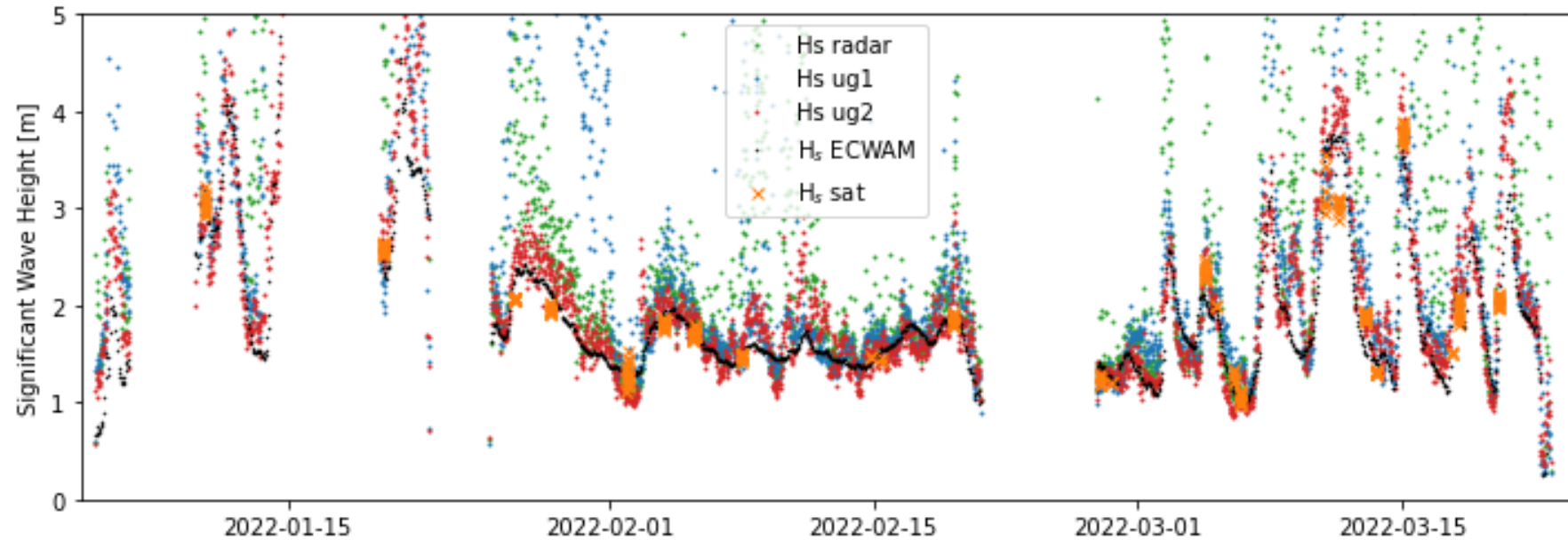


Comparing the three probes (ylim=5)

Autumn 2021

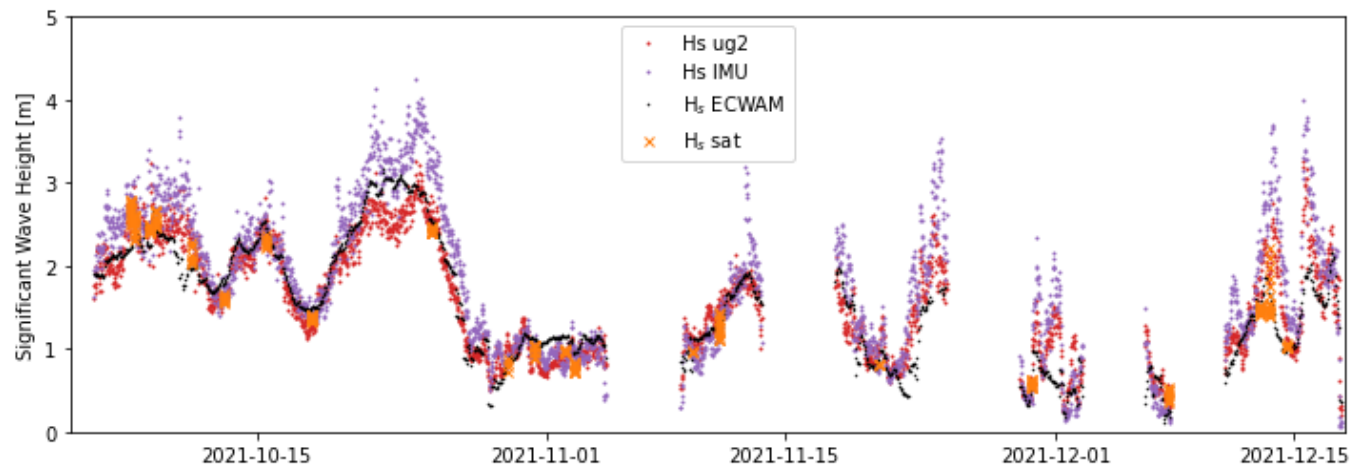


Spring 2022

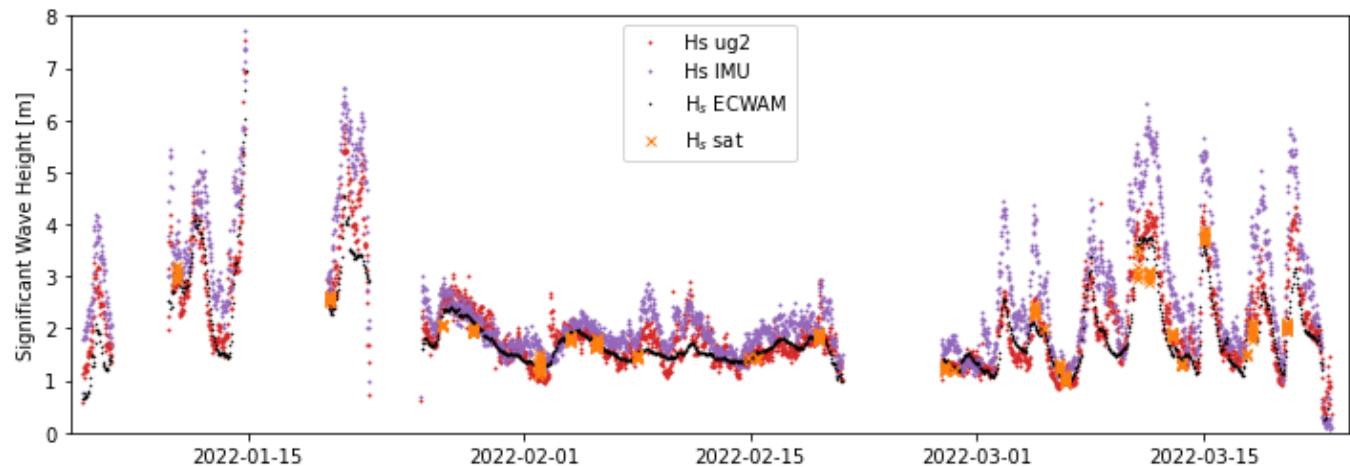


Comparing IMU to ug2

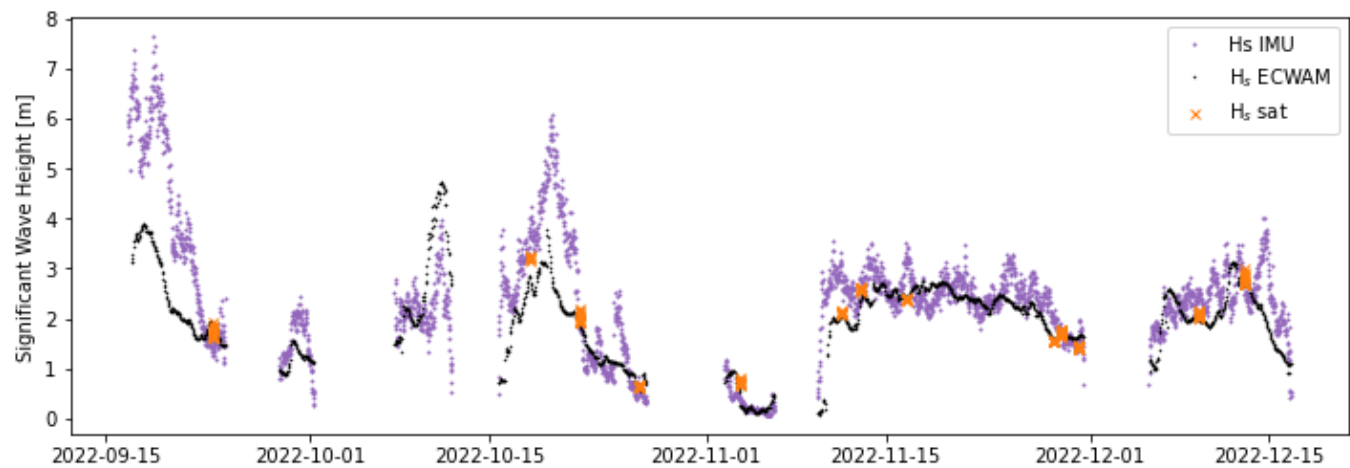
Autumn 2021



Spring 2022



Autumn 2022

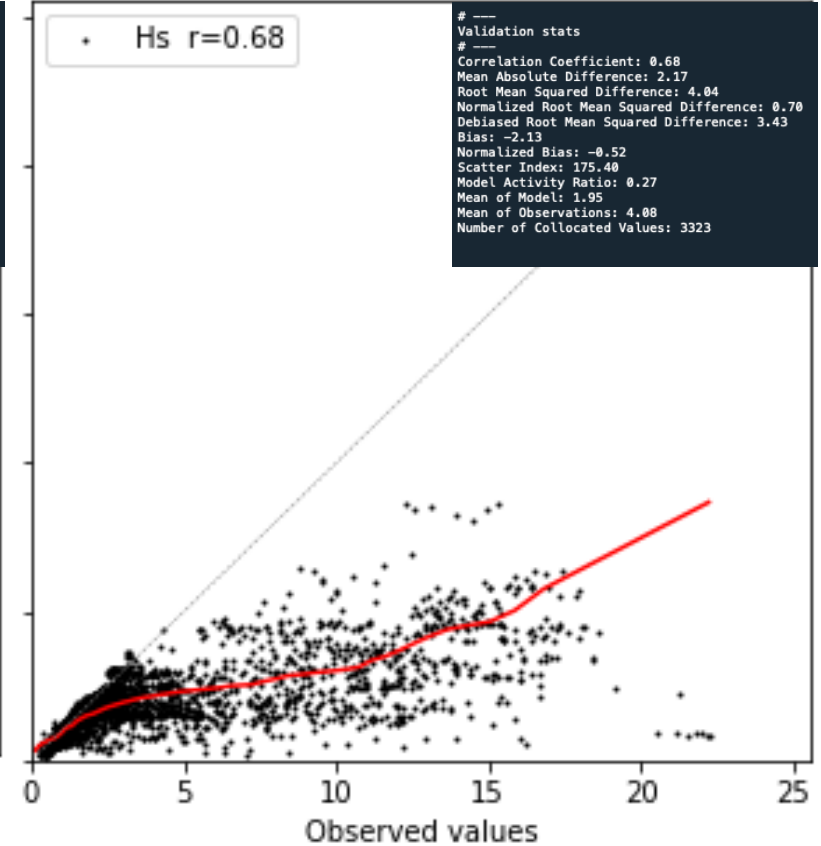
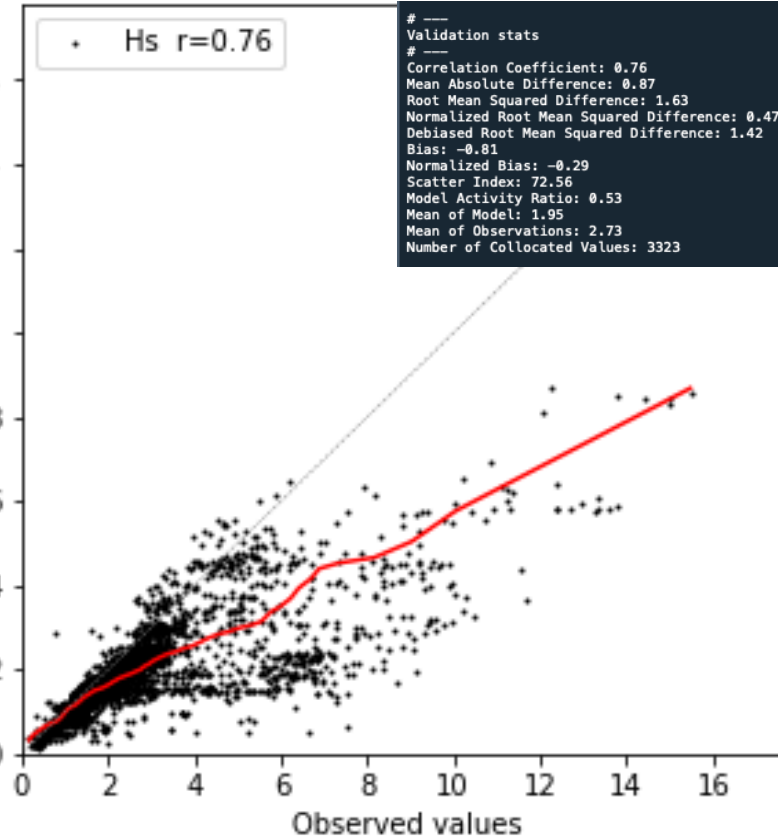
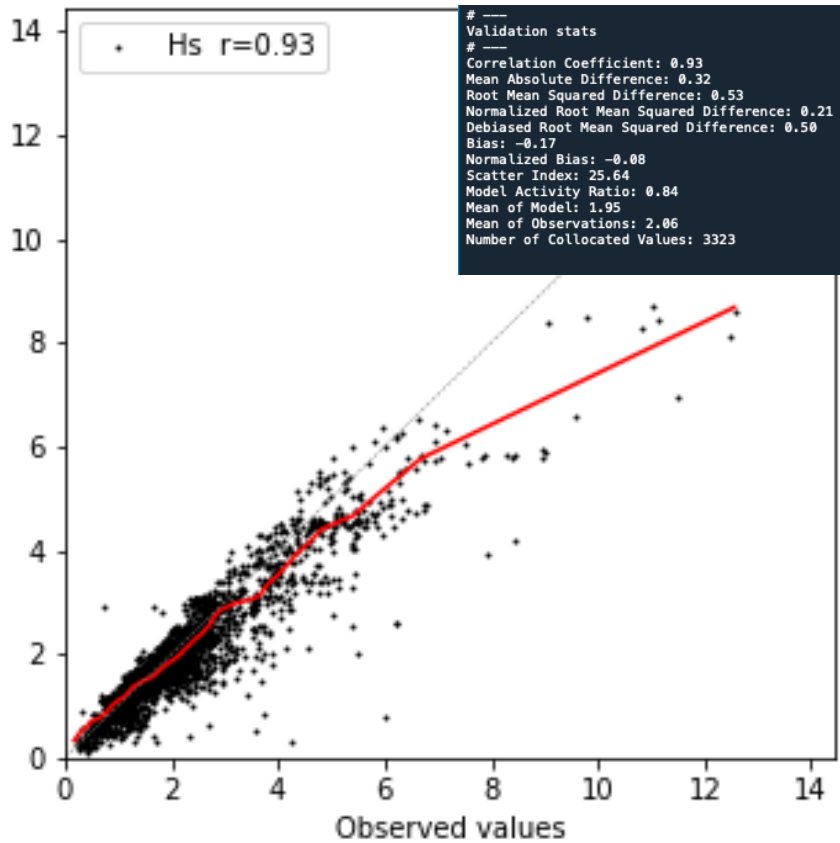


Model Verification – ug2 vs ug1 and radar

ug2

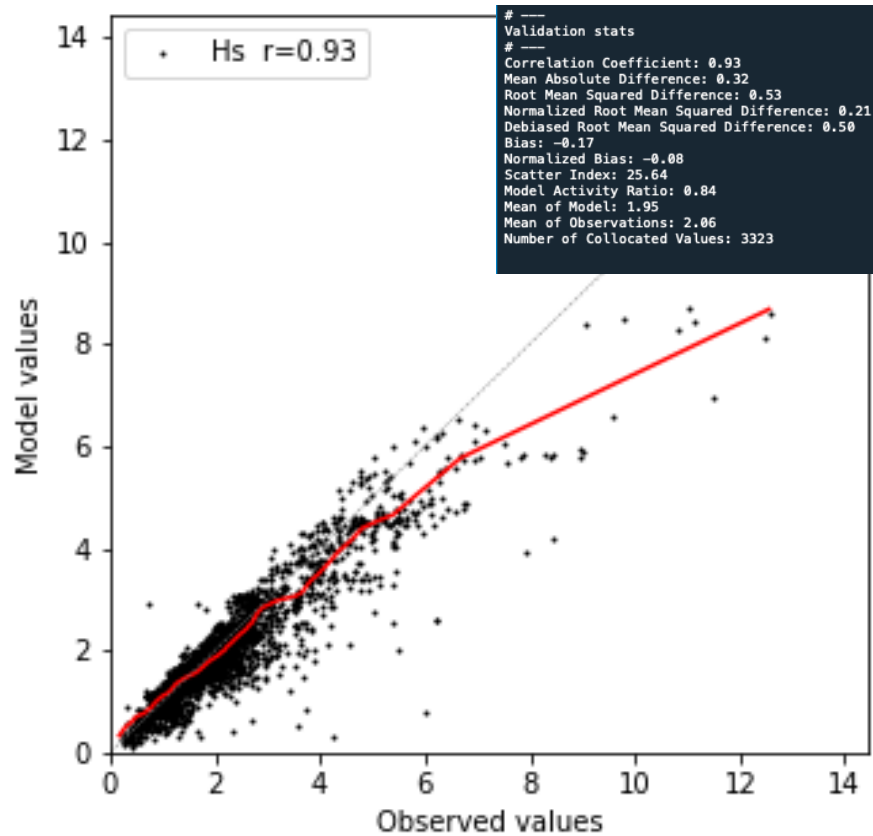
ug1

radar

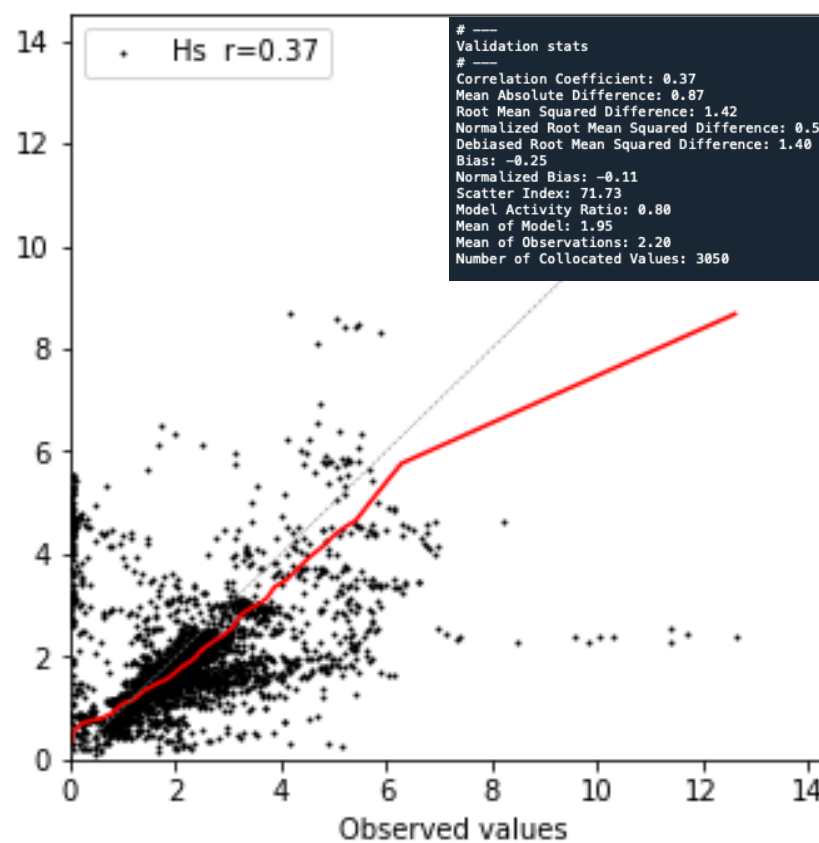


Model verification– ug2 vs IMU

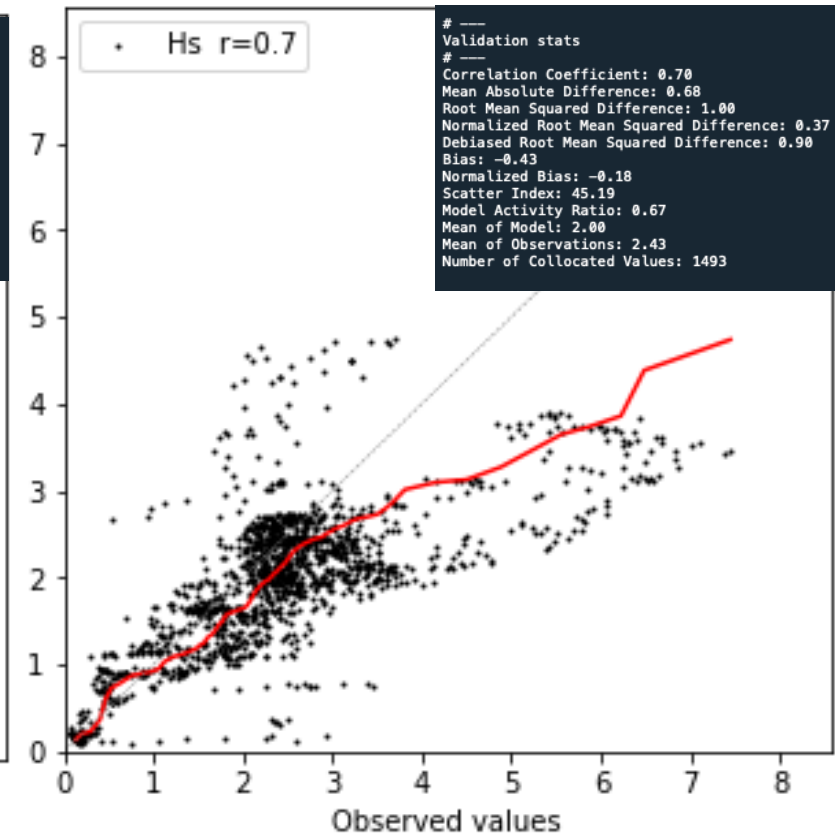
ug2



IMU old system

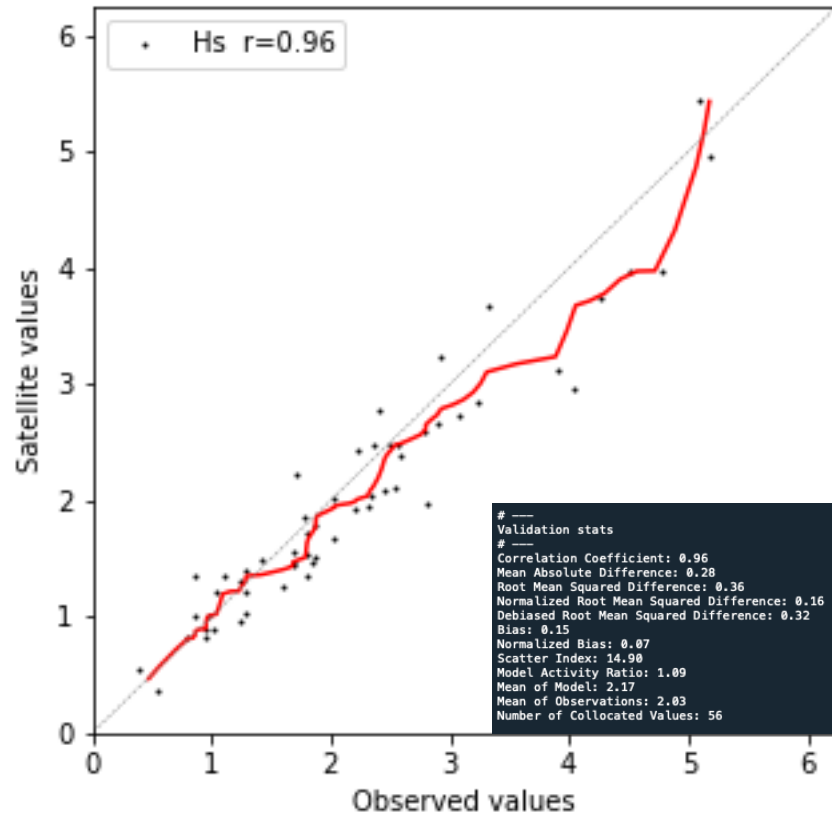


IMU new system

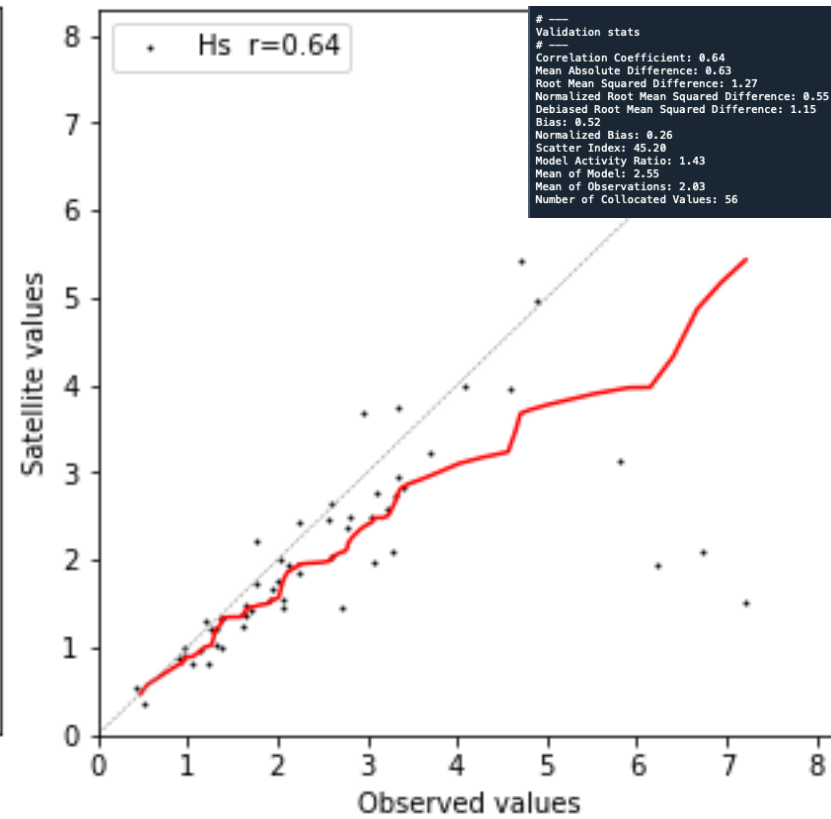


Satellite verification – ug2 vs ug1 vs radar

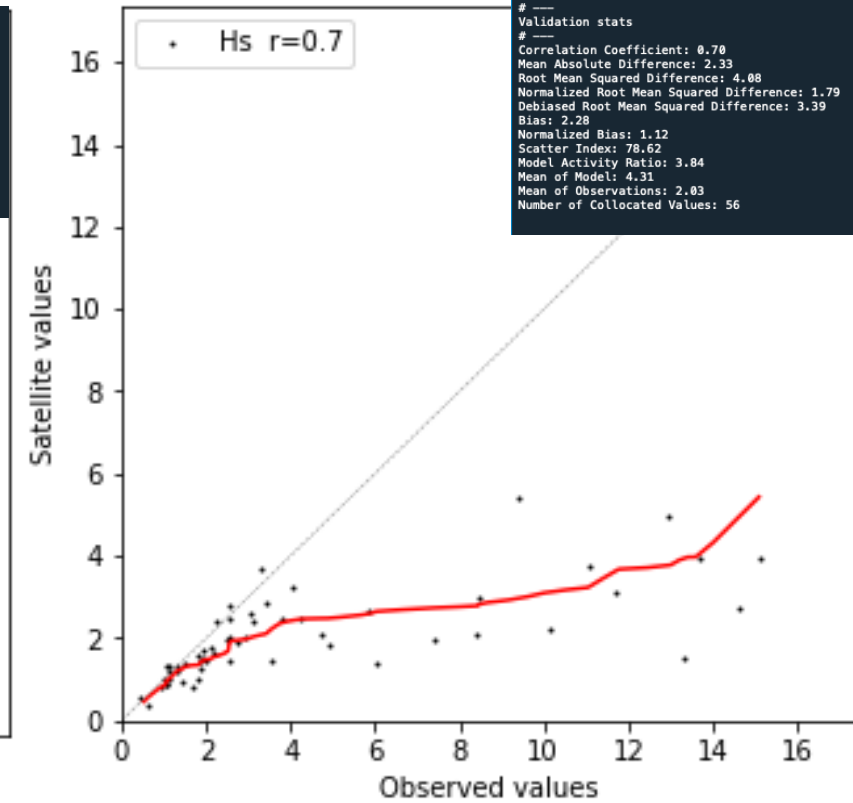
ug2



ug1

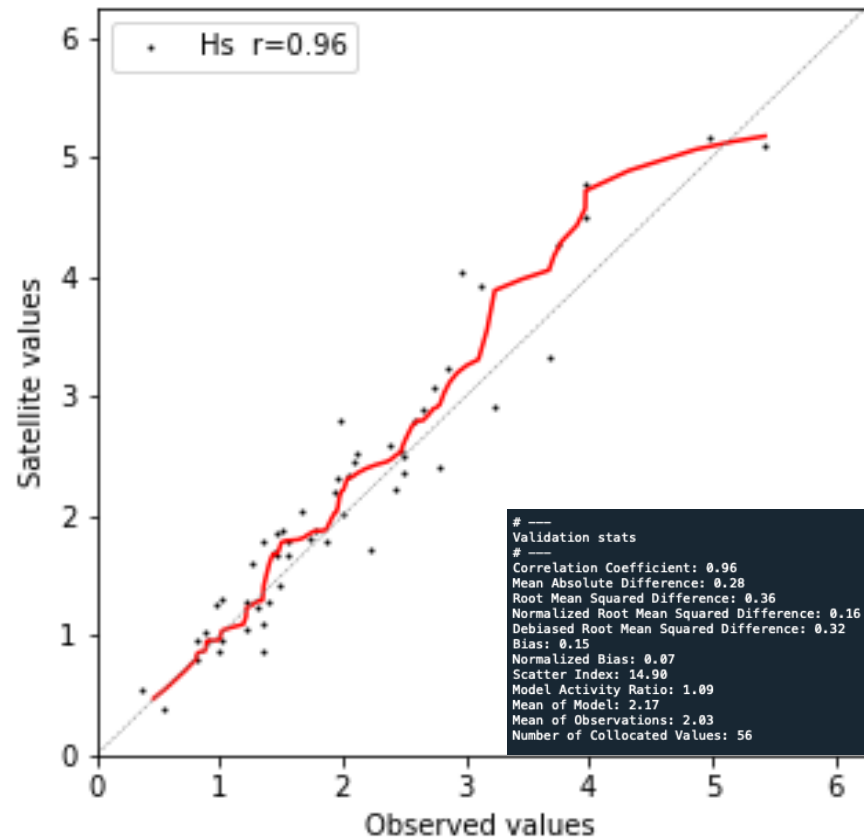


radar

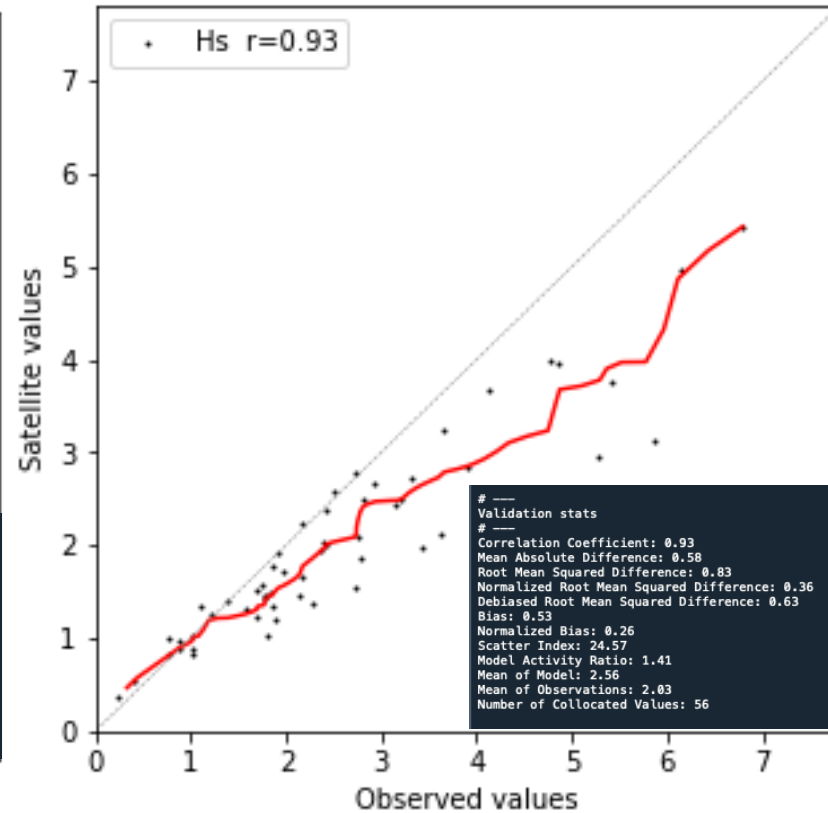


Satellite verification – ug2 vs IMU

ug2



IMU old system



IMU new system

