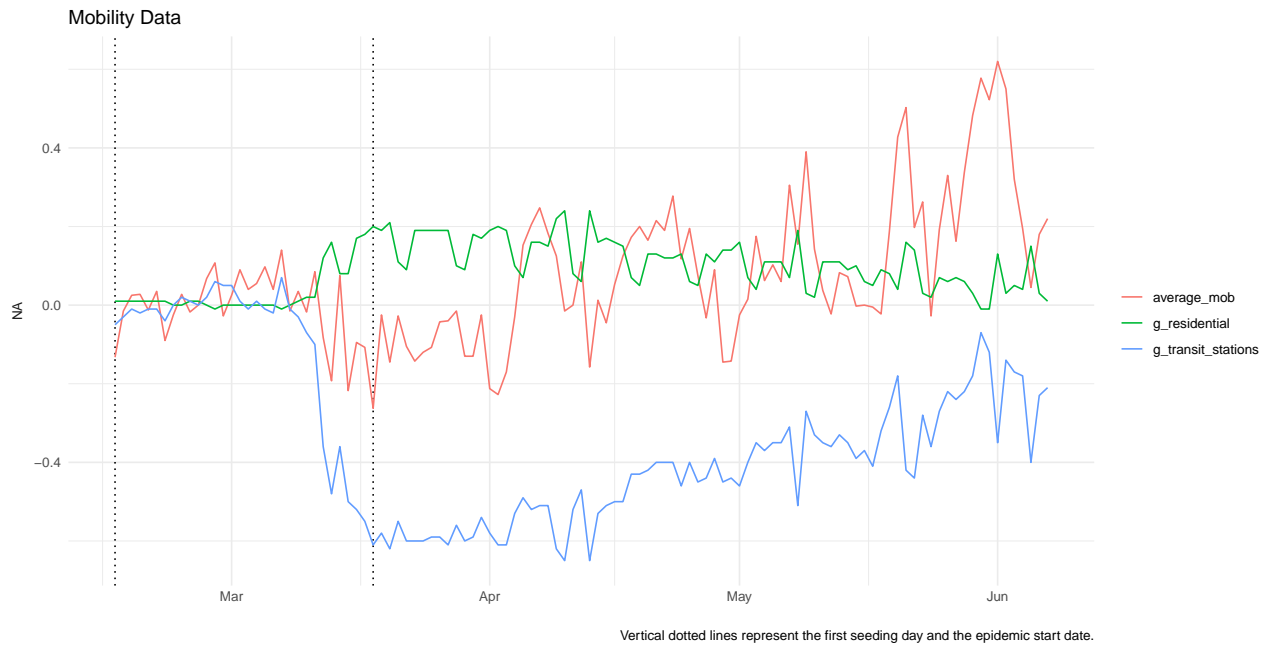
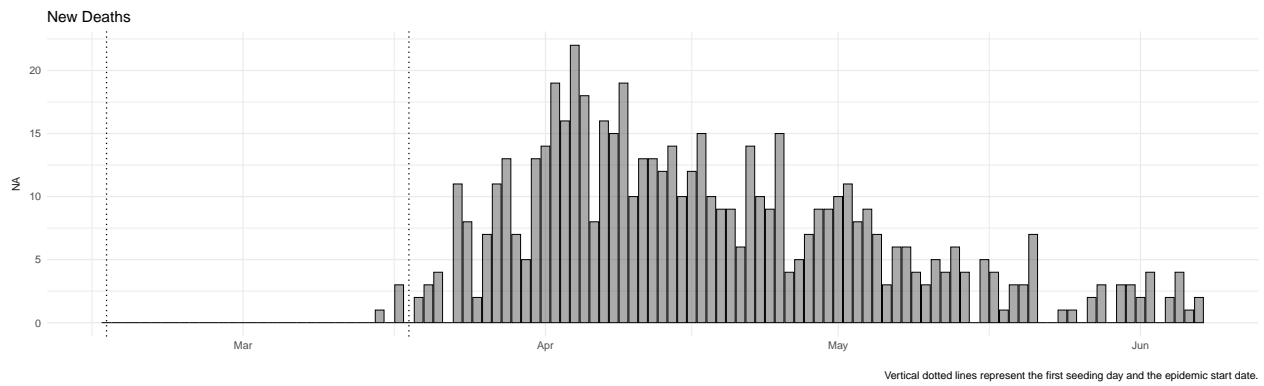
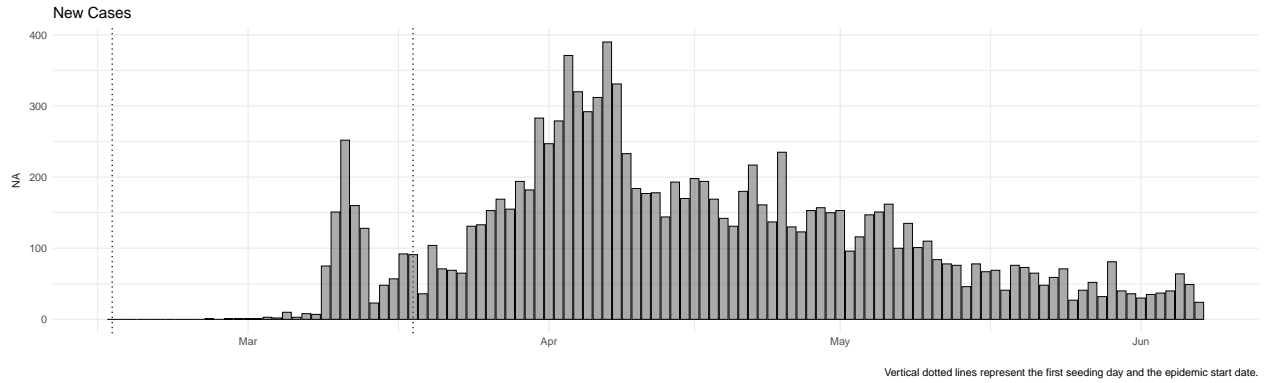


Denmark

Data



Analysis

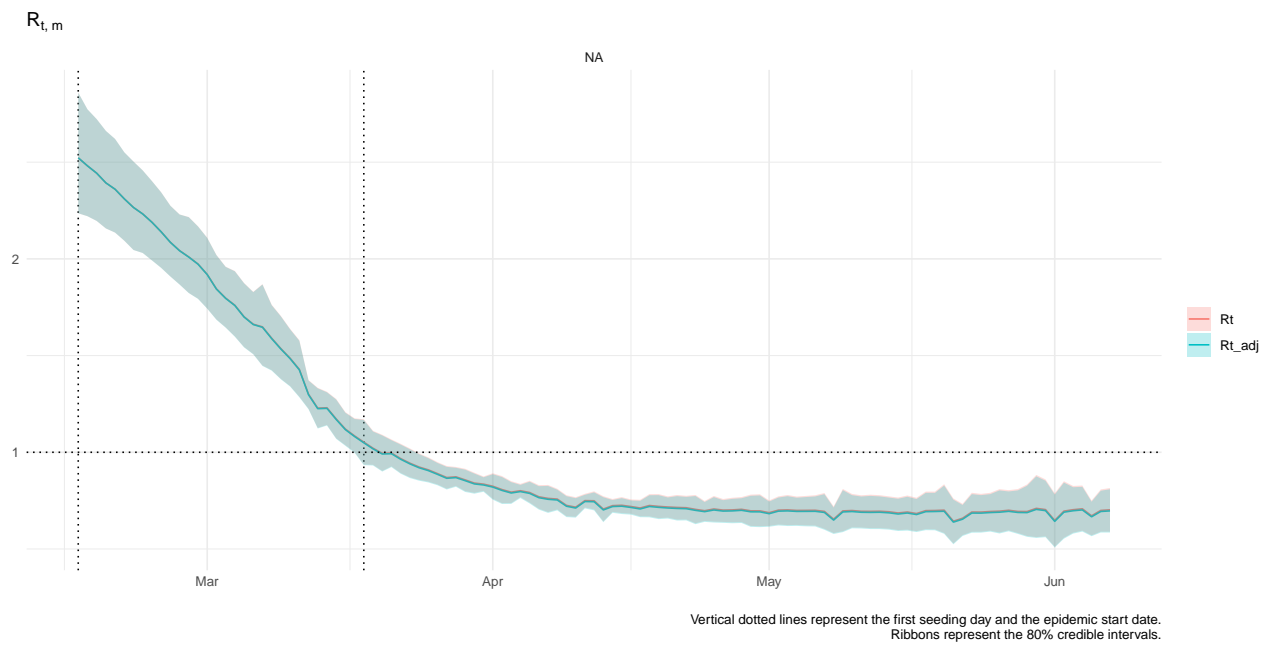
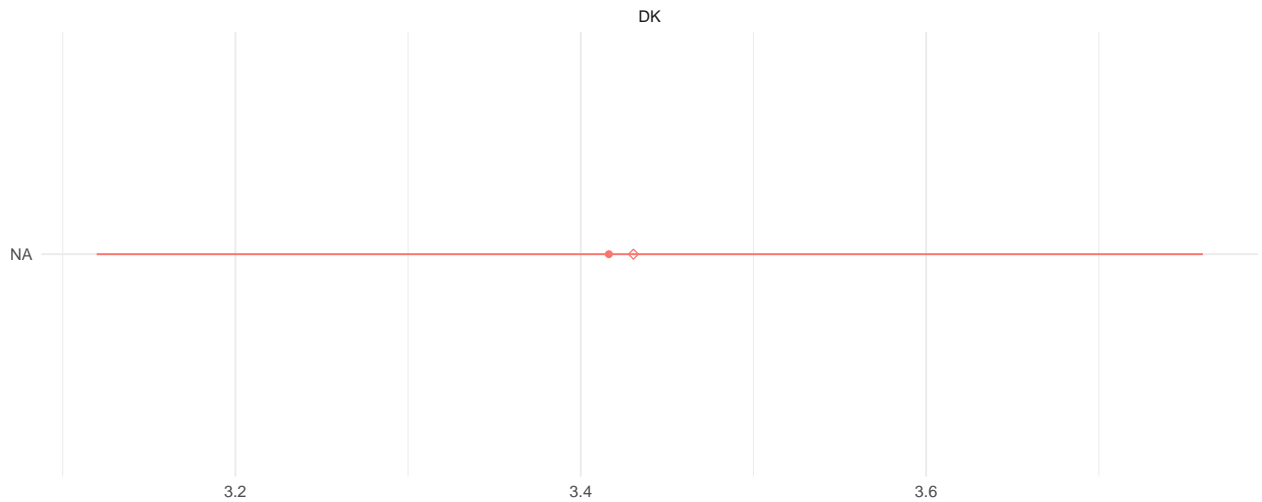
Number of divergent transitions =

Maximum \hat{R} =

Minimum Bulk ESS =

Minimum Tail ESS =

$R_{0,m}$



Contact rate function:

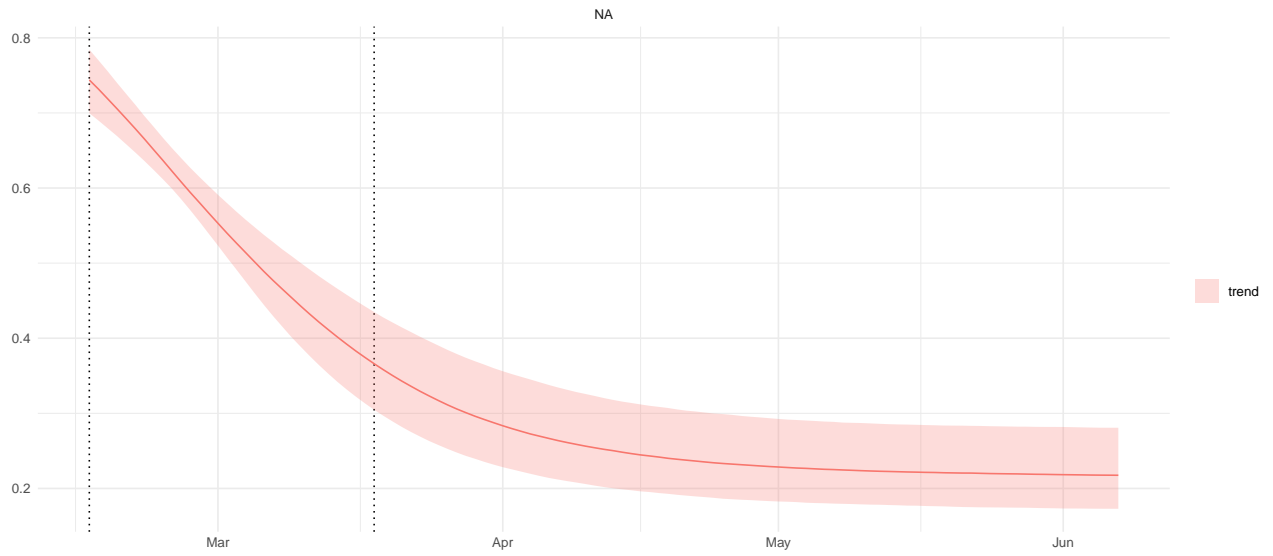
$$cr(t; t^*, \lambda_j, \kappa) = \lambda_j + \frac{1 - \lambda_j}{1 + \exp(\kappa(t - t^*))}$$

where

$$\lambda_j \sim \text{Beta}(3, 1)$$

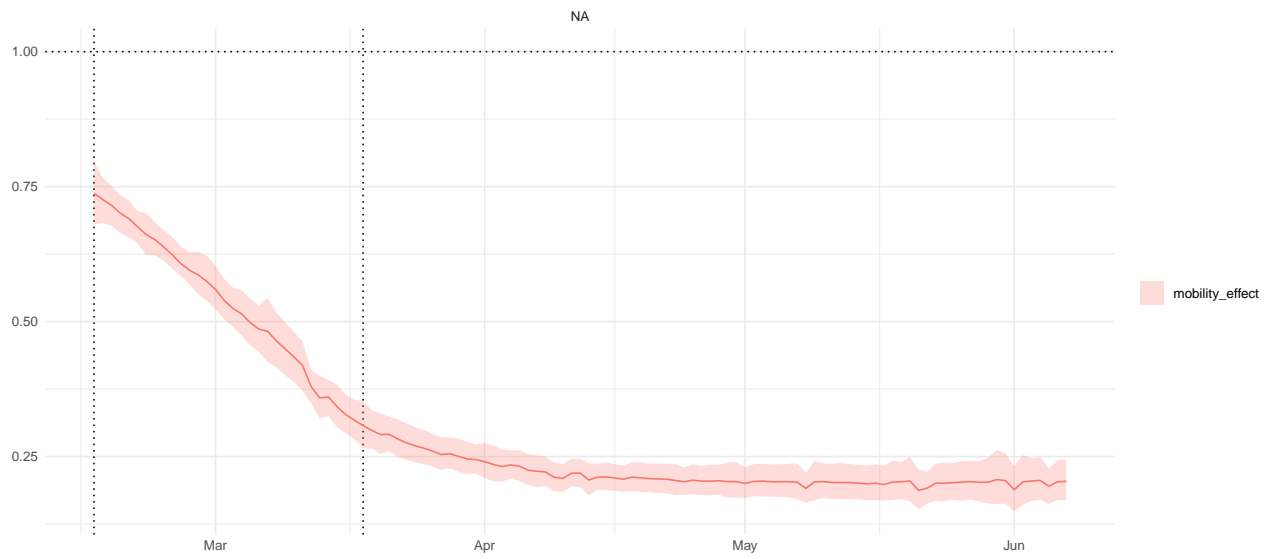
$$\kappa \sim \text{NegHalfNormal}(0, 1).$$

Contact Rate

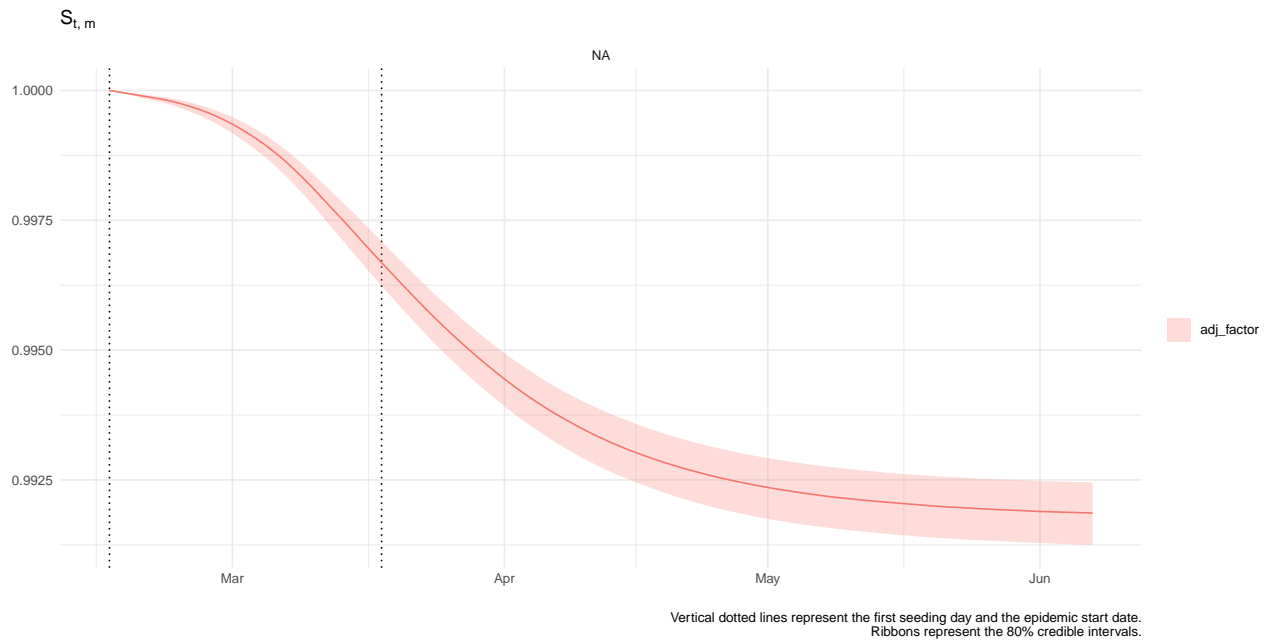


Vertical dotted lines represent the first seeding day and the epidemic start date.
Ribbons represent the 80% credible intervals.

Mobility effect

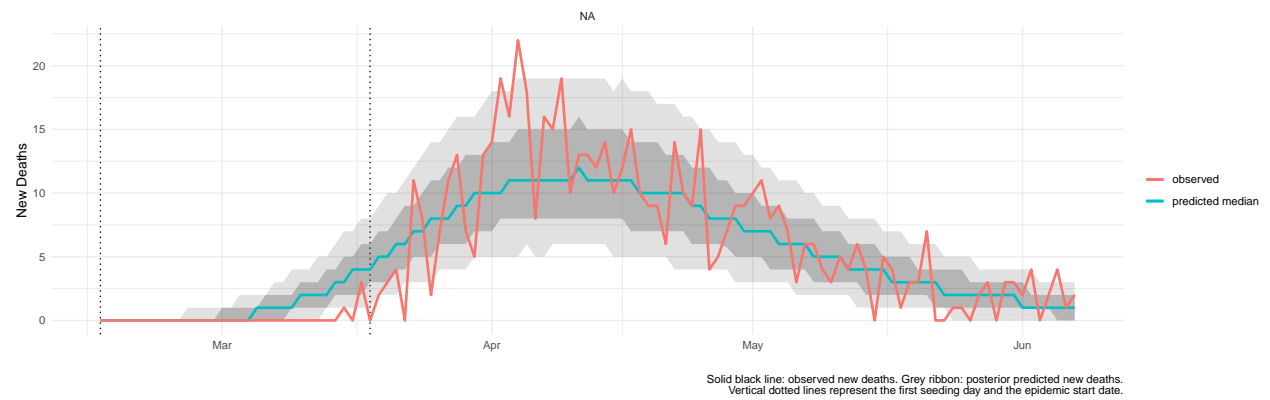
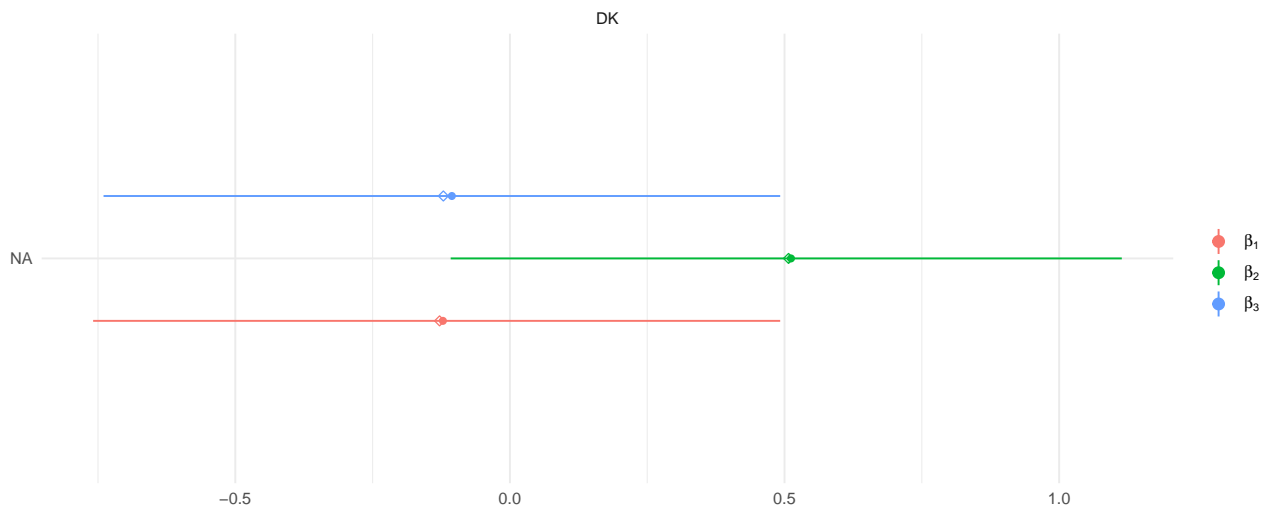


Vertical dotted lines represent the first seeding day and the epidemic start date.
Ribbons represent the 80% credible intervals.

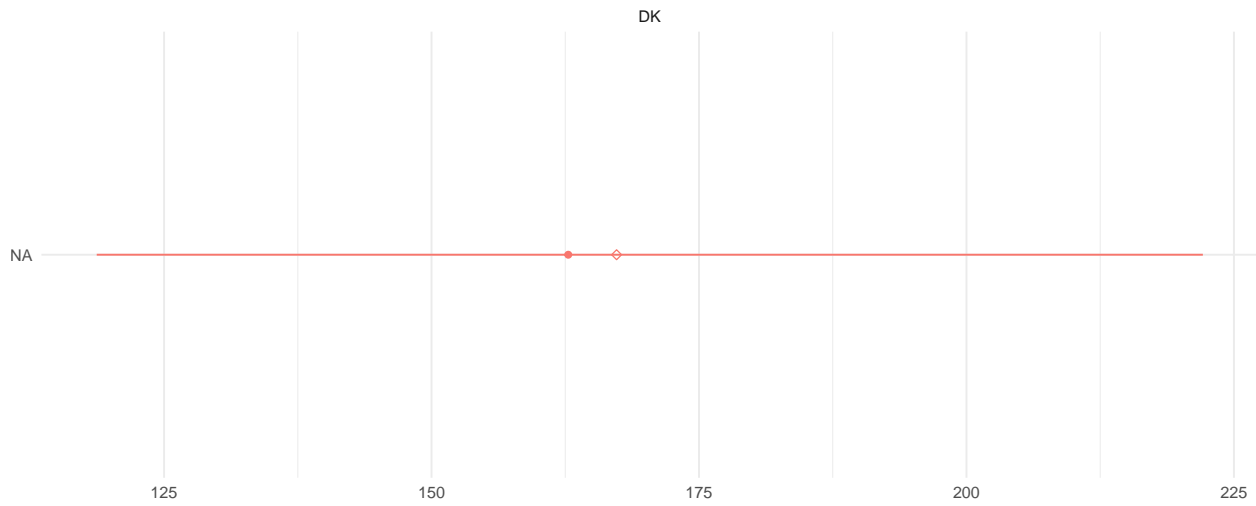


Mobility linear model: $\beta_1 \cdot X_{\text{residential}} + \beta_2 \cdot X_{\text{transit}} + \beta_3 \cdot X_{\text{average}}$.

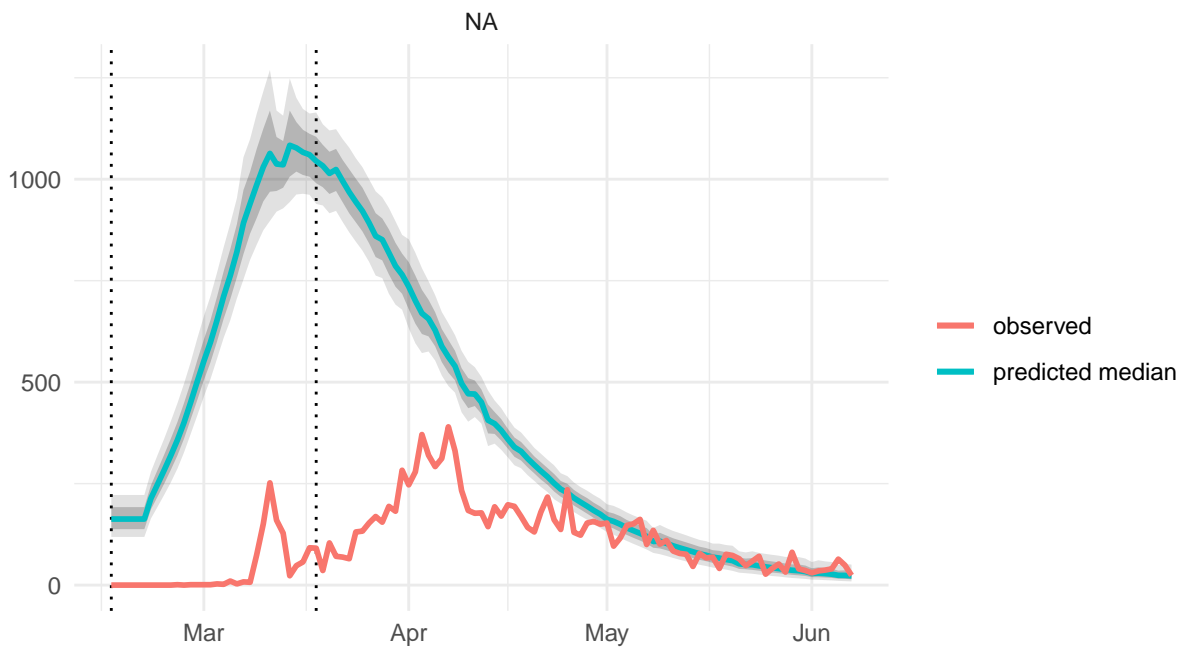
β



Imputed Cases



New Cases predicted vs observed



Solid black line: observed new deaths. Grey ribbon: posterior predicted new deaths.
Vertical dotted lines represent the first seeding day and the epidemic start date.

IFR

DK

NA

-0.02

0.00

0.02

0.04

0.06

Diagnostics

