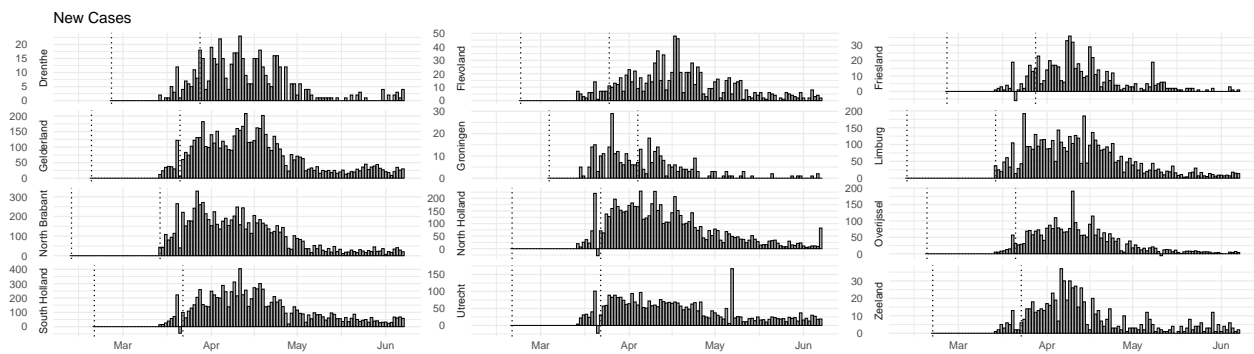
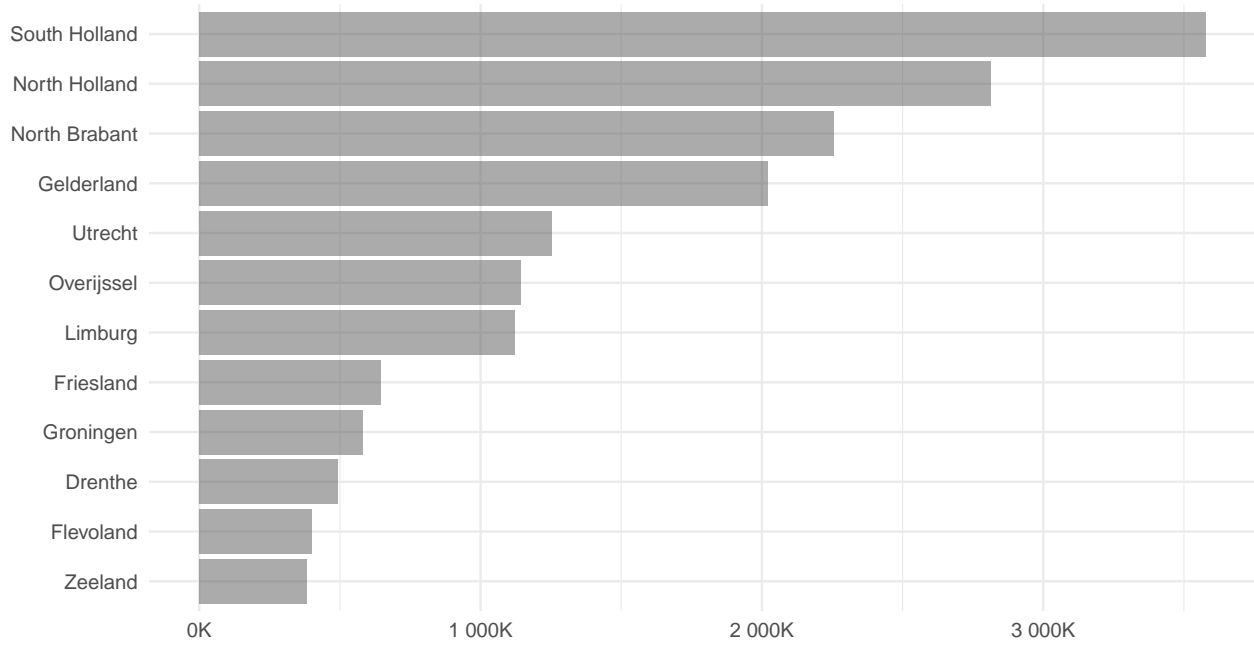


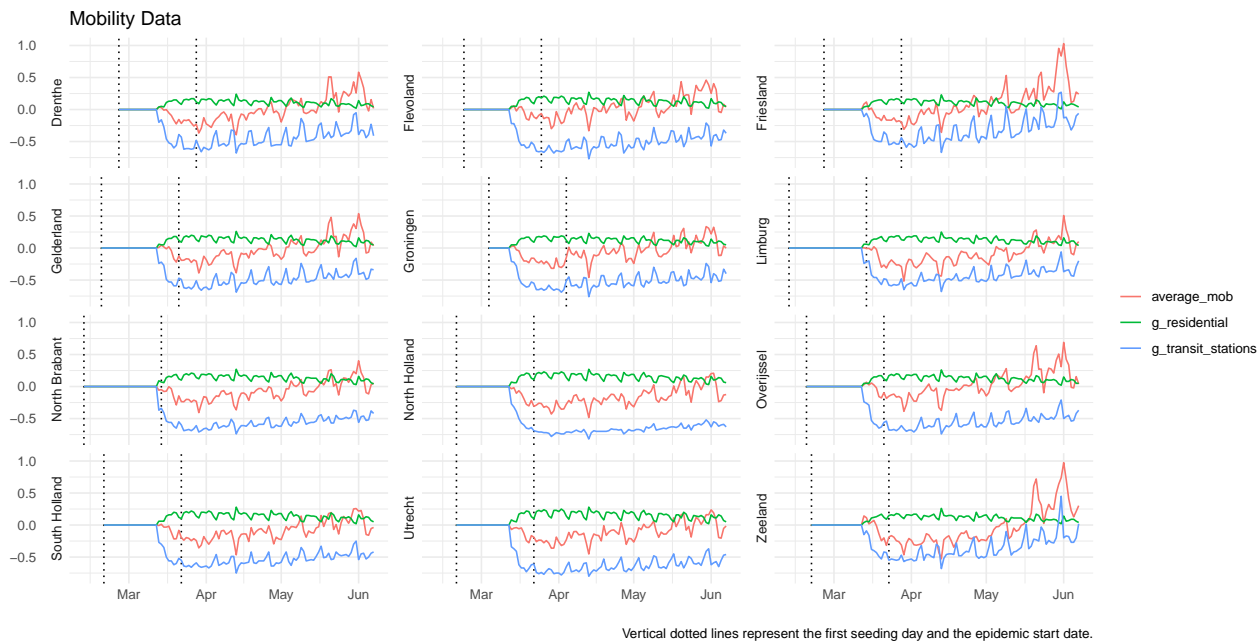
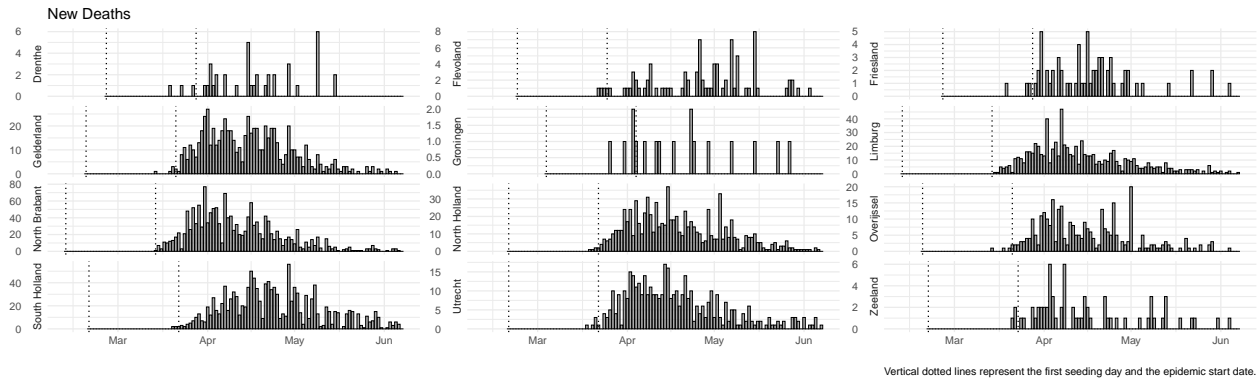
Netherlands

Data

Population



Vertical dotted lines represent the first seeding day and the epidemic start date.



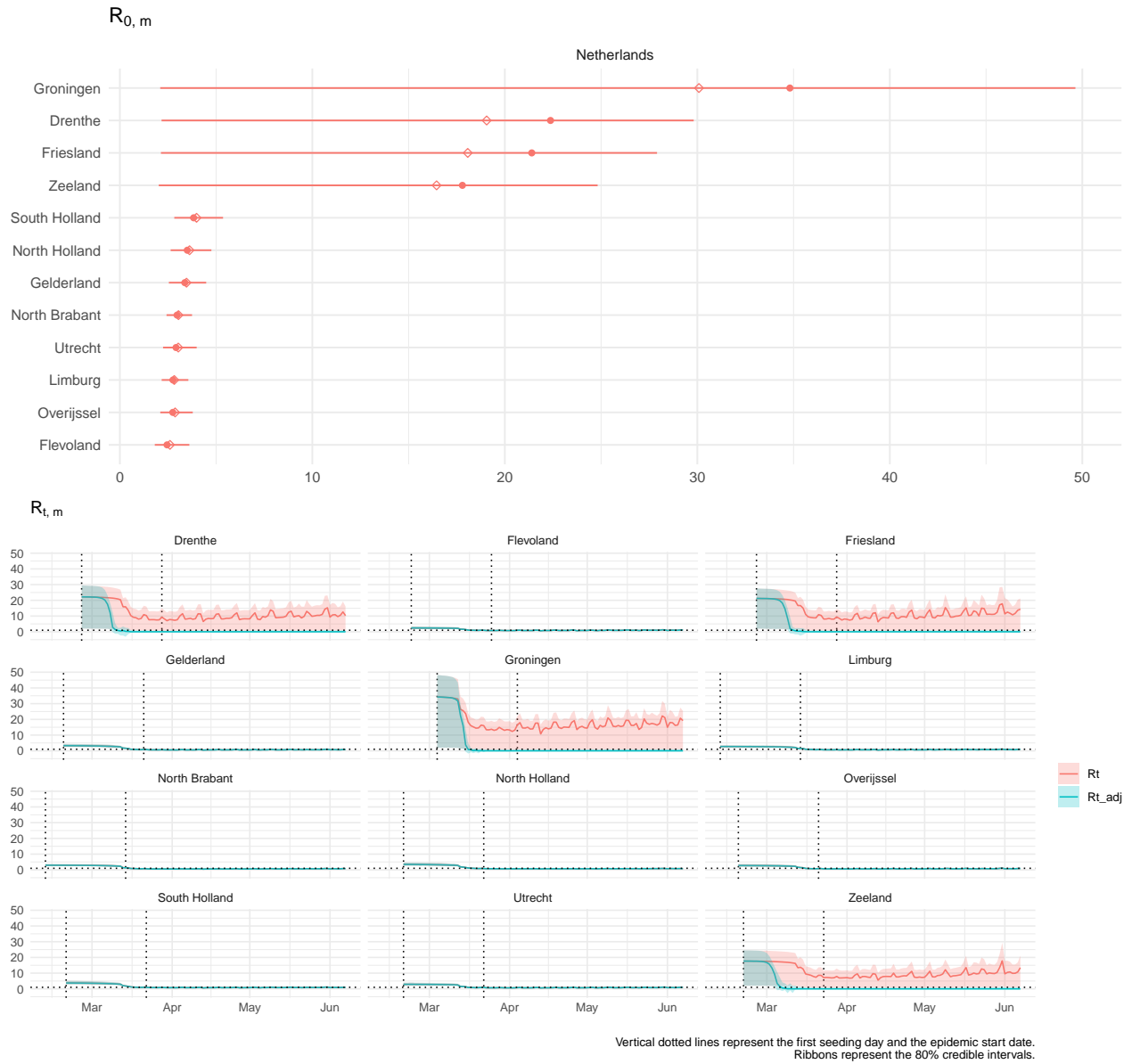
Analysis

Number of divergent transitions = 284

Maximum \hat{R} = 2.4498102

Minimum Bulk ESS = 4.8668873

Minimum Tail ESS = 5.7984882



Contact rate function:

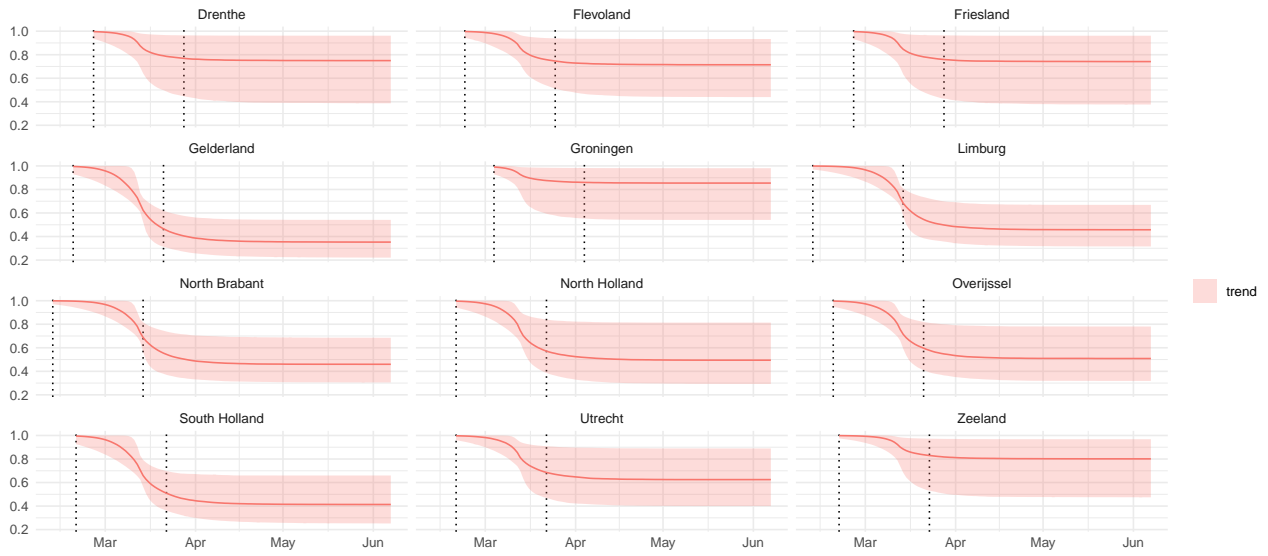
$$cr(t; t^*, \lambda_j, \kappa) = \lambda_j + \frac{1 - \lambda_j}{1 + \exp(\kappa(t - t^*))}$$

where

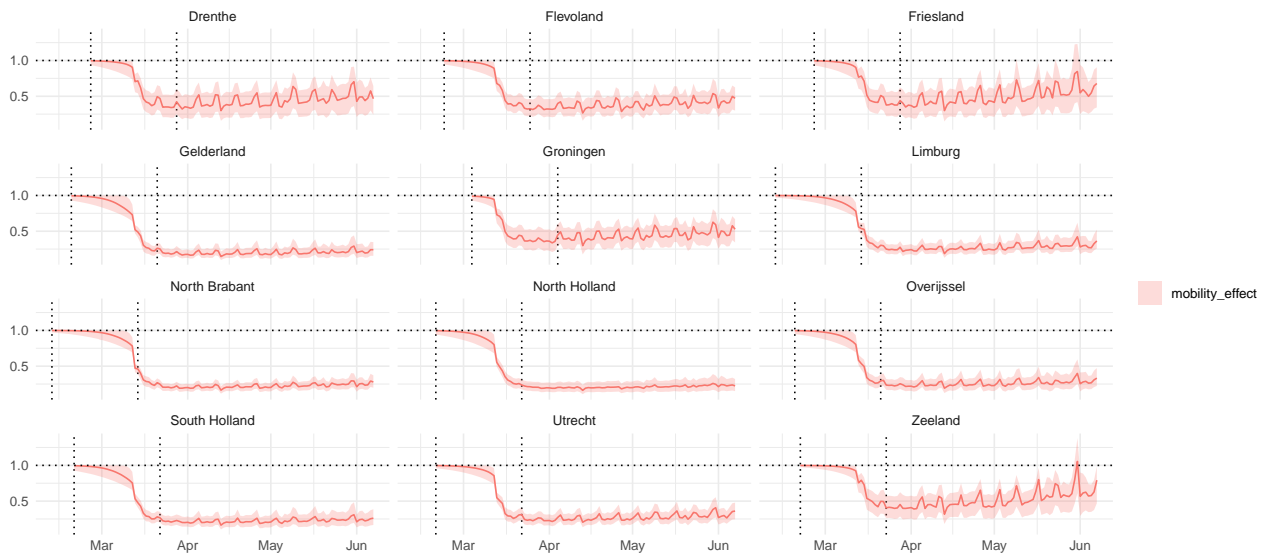
$$\lambda_j \sim \text{Beta}(3, 1)$$

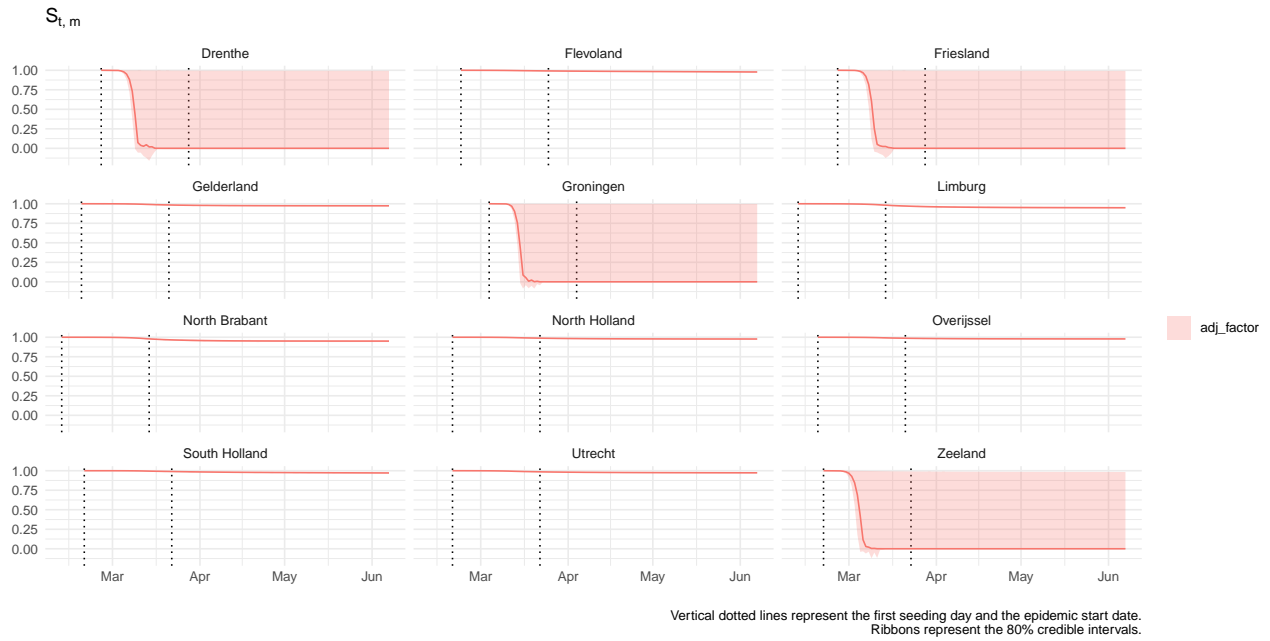
$$\kappa \sim \text{NegHalfNormal}(0, 1).$$

Contact Rate

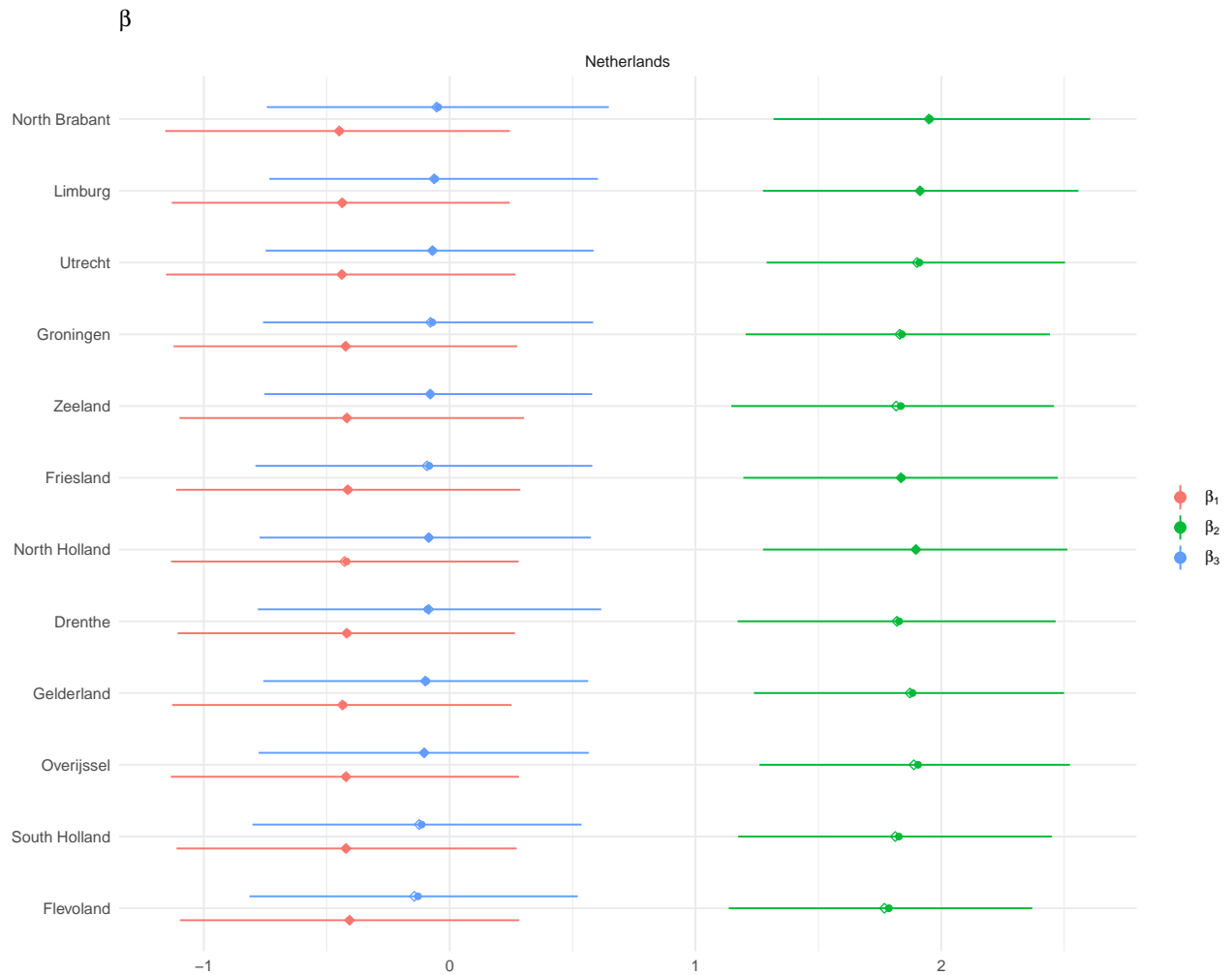


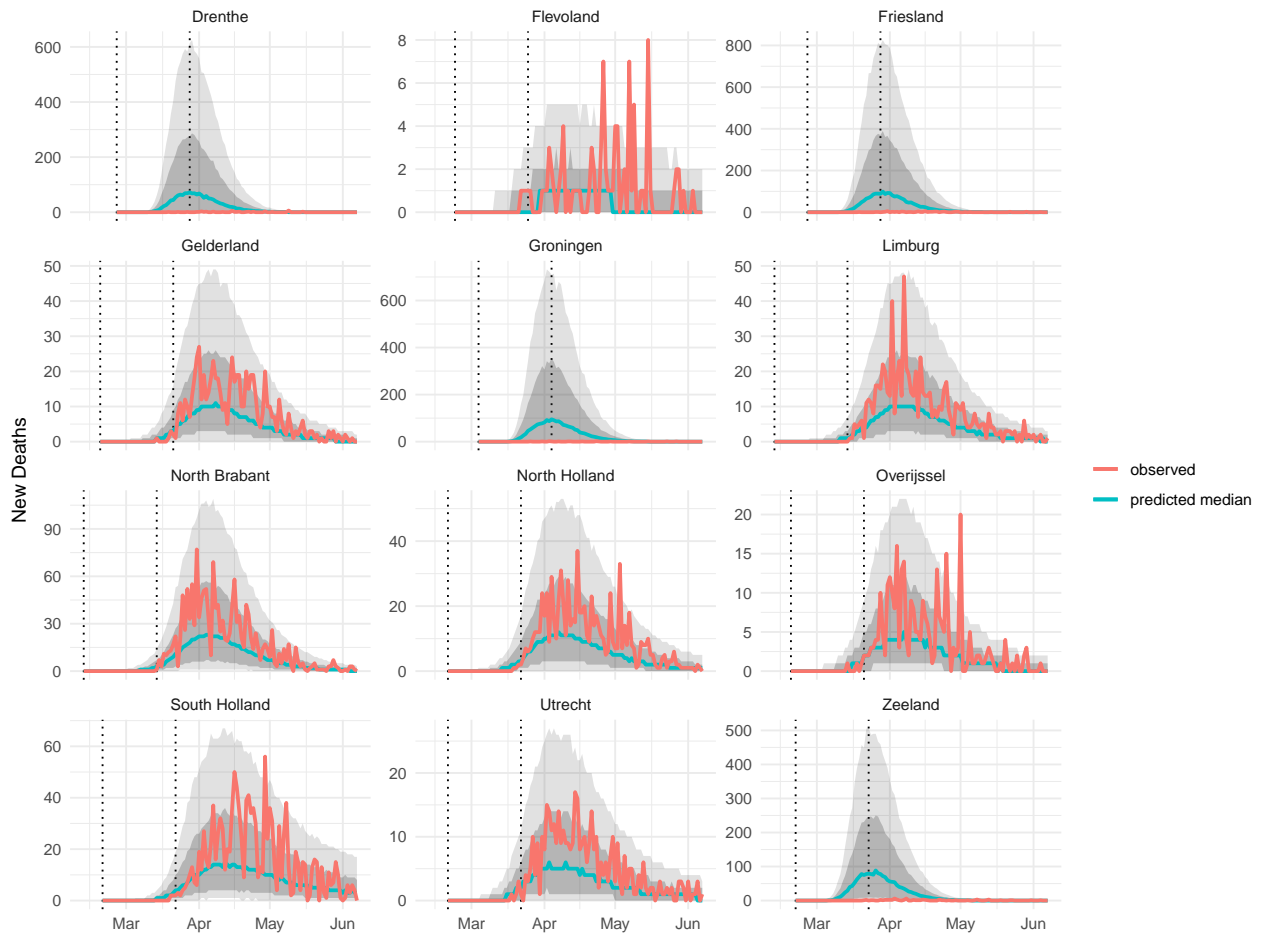
Mobility effect





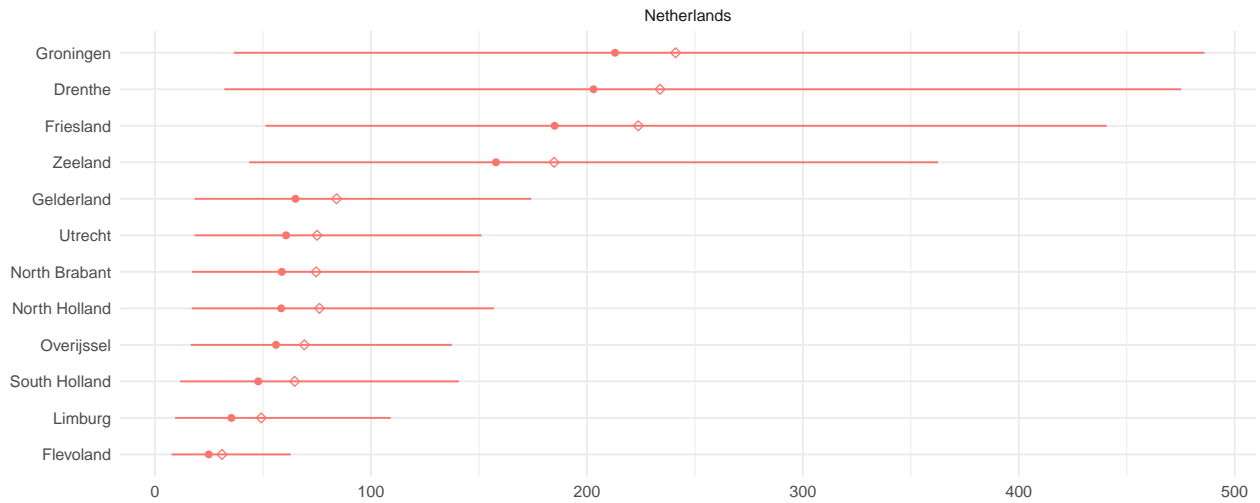
Mobility linear model: $\beta_1 \cdot X_{\text{residential}} + \beta_2 \cdot X_{\text{transit}} + \beta_3 \cdot X_{\text{average}}$.



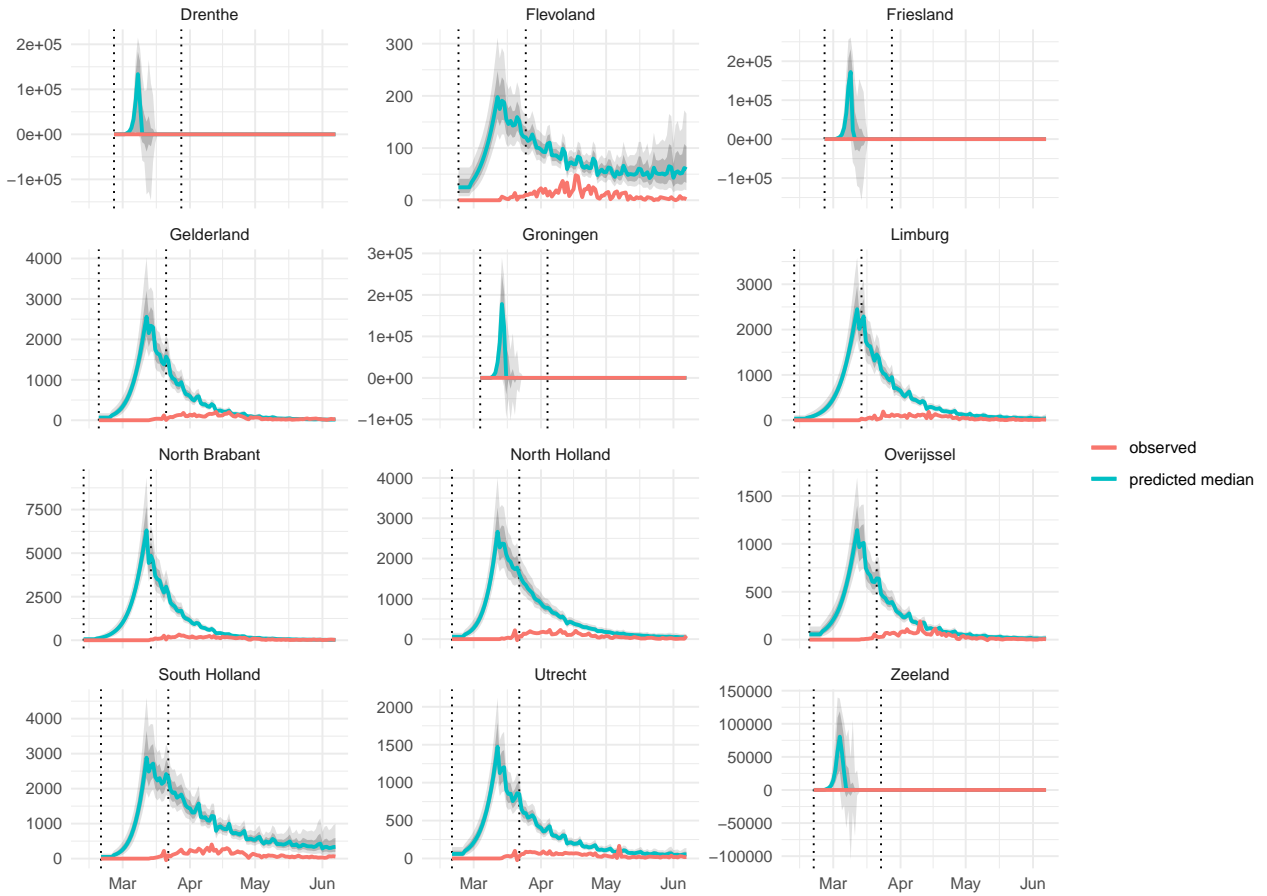


Solid black line: observed new deaths. Grey ribbon: posterior predicted new deaths. Vertical dotted lines represent the first seeding day and the epidemic start date.

Imputed Cases

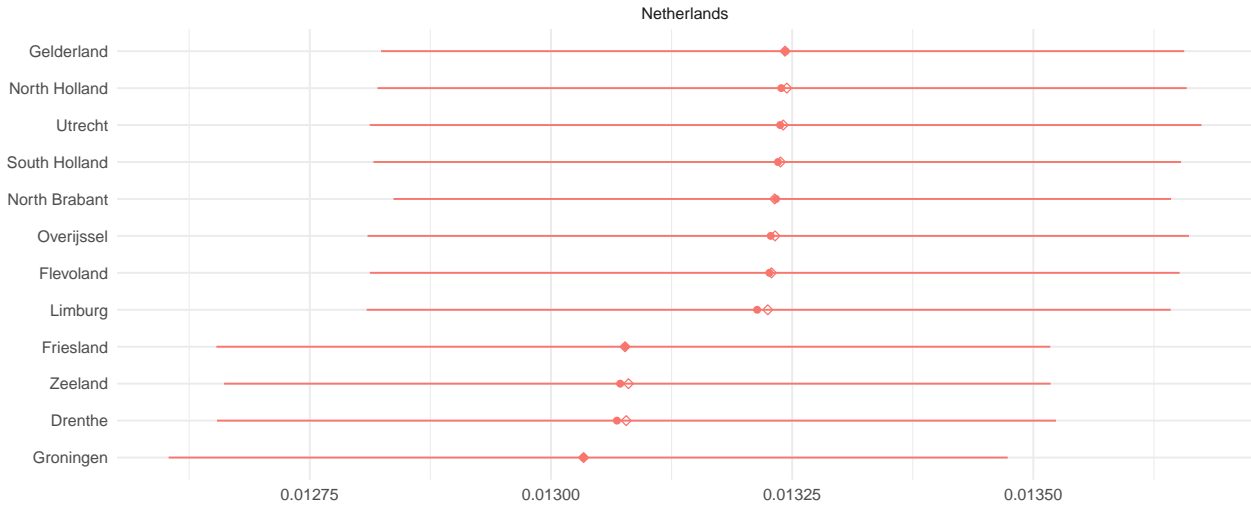


New Cases
predicted vs observed



Solid black line: observed new deaths. Grey ribbon: posterior predicted new deaths.
Vertical dotted lines represent the first seeding day and the epidemic start date.

IFR



Prior Prediction

Not Available.

Diagnostics

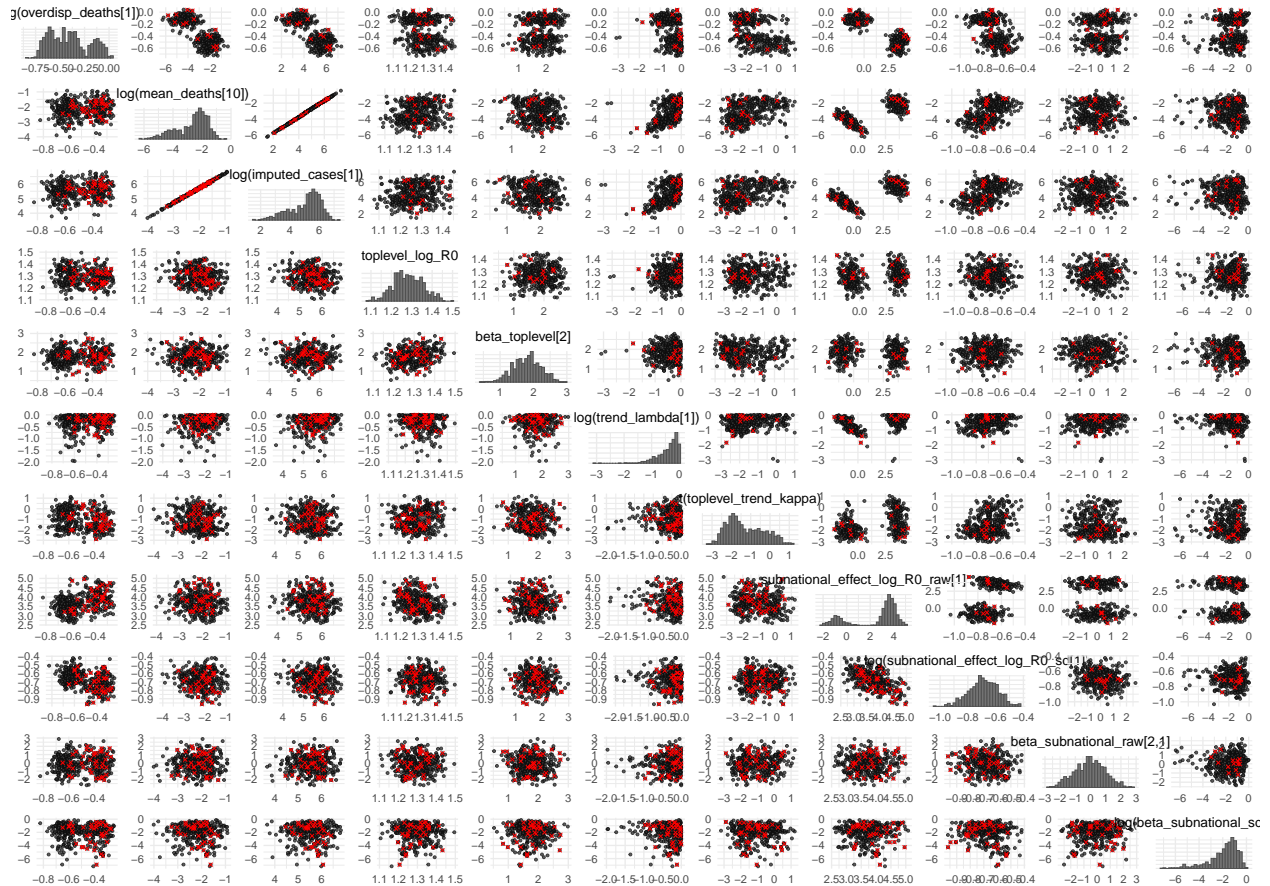
```
## This is bayesplot version 1.7.2
```

```
## - Online documentation and vignettes at mc-stan.org/bayesplot
```

```
## - bayesplot theme set to bayesplot::theme_default()
```

```
## * Does _not_ affect other ggplot2 plots
```

```
## * See ?bayesplot_theme_set for details on theme setting
```



Posterior distribution of parameters

