

# Installation Guide for Bike Rack

## Preparation:

- Cleaning cloth & cleaning liquid (recommended)
- Clean the trunk/hitch with a soft cloth before installation
- Wearing gloves to install in highly recommended

## ⚠ [Safety Warning/Caution]

- Do not load exceed the designated carrying capacity (140lbs/63.5kg)
- Do not over-tighten the knobs
- Please remove all accessories on the trunk/hitch before installation



## Step 1:

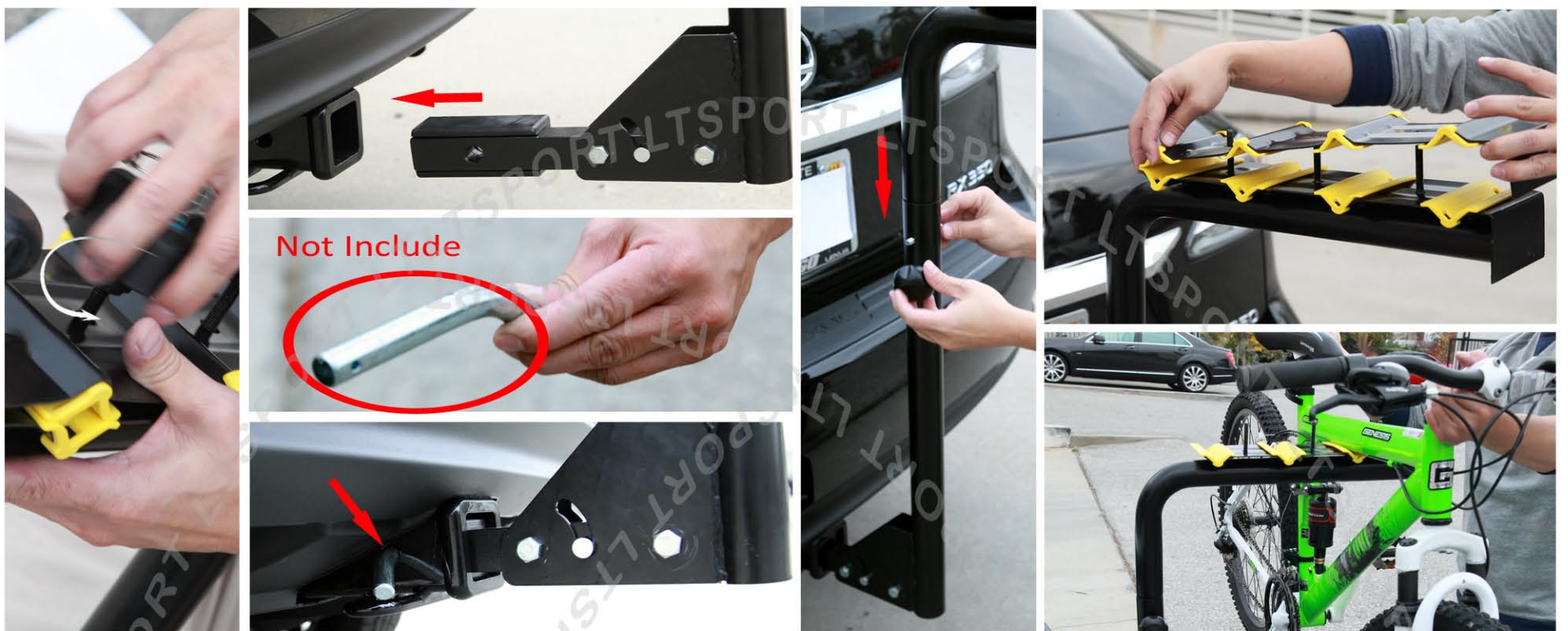
- Thread the bolts from the bottom of the clamp
- Insert the locking pin(clip), washer, and hitch bolt to lock the lever
- Screw on the bolts with the spacers and locking nuts



## Step 2:

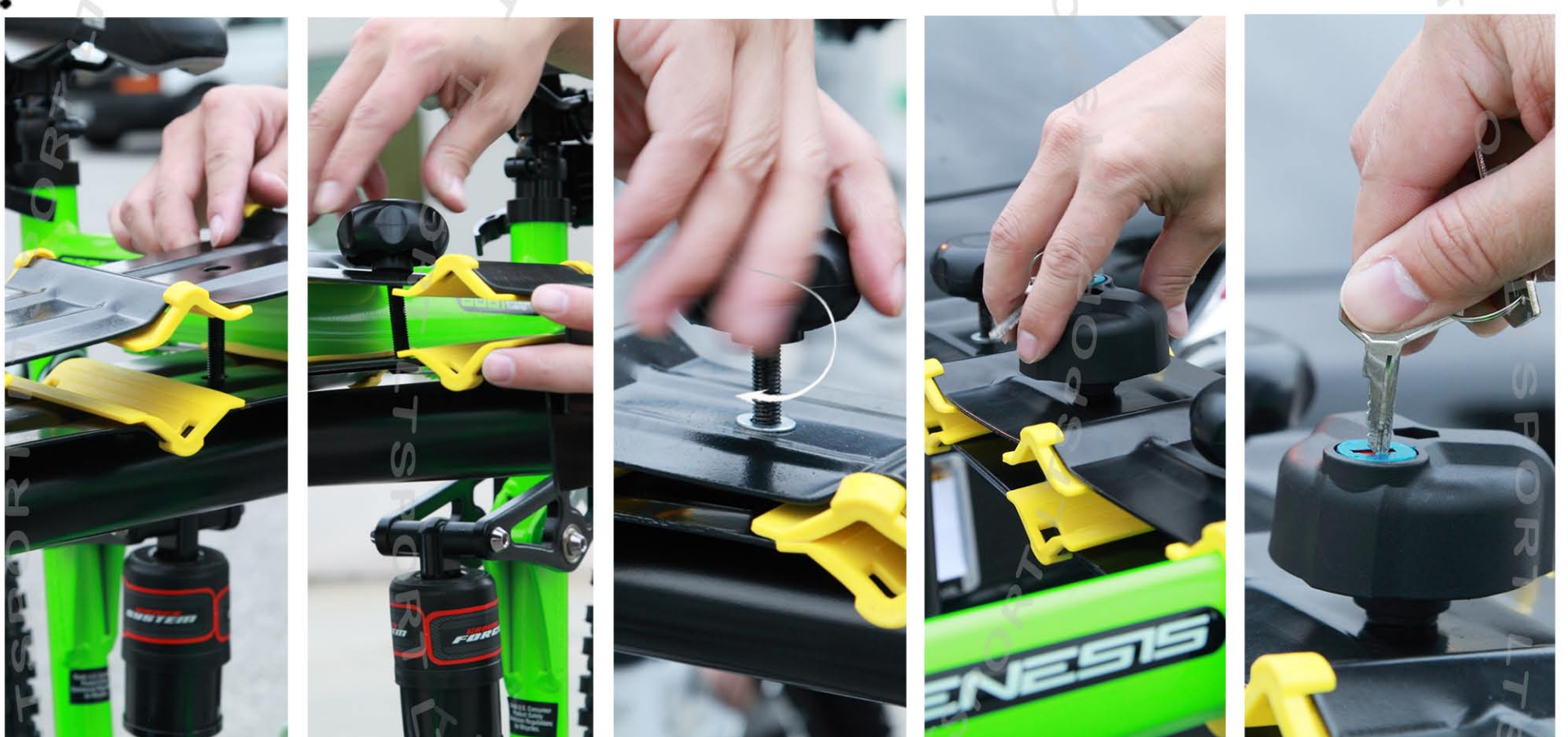
- Slide the hitch receiver extension to the supporting arm
- [Loading the bike]

Take off the top of the plate of the cradle and place the bike on the clamp



## Step 3:

- Put the top plate back and tighten the black knob



## Step 4:

- Lock the bike rack with the key

