

# FEWD Wire Frames

Construction Website

Top Nav

[About](#) [Services](#) [Job History](#) [Careers](#) [Contact Us](#)

Carousel

Caption w/ Job Title

Footer

Top Nav

[About](#) [Services](#) [Job History](#) [Careers](#) [Contact Us](#)

Contact Info

Contact Form

Name

Email

Phone Number

Subject of Interest

Footer

Top Nav

[About](#) [Services](#) [Job History](#) [Careers](#) [Contact Us](#)

Selector

Photo

Profile Write Up

Footer

Top Nav

[About](#) [Services](#) [Job History](#) [Careers](#) [Contact Us](#)

Services

Carousel Photos of Service

Footer

# Research

Construction Websites



[HOME](#)

[ABOUT US](#)

[SERVICES](#)

[PROJECT PORTFOLIO](#)

[NEWS & MEDIA](#)

[CONTACT US](#)

# CONTACT US

## GET IN TOUCH WITH US

In order to build long lasting and strong relationships, communication is key.

Our staff is happy to assist with any and all inquiries.

## CONNECTICUT



HEADQUARTERS:  
The Associated Construction  
Company  
1010 Wethersfield Avenue  
Suite 206  
Hartford, CT 06114

CONTACT INFORMATION:  
Phone: (860) 234-2200  
Fax: (860) 234-2201  
General: [admins@accgc.com](mailto:admins@accgc.com)  
Marketing: [marketing@accgc.com](mailto:marketing@accgc.com)  
Estimating: [estimating@accgc.com](mailto:estimating@accgc.com)

### CONTACT US

Send us an email and we'll get back to you, asap.

Name\*

Email\*

Message\*

SEND





SPAZZARINI

CONSTRUCTION COMPANY, INC.

**Spazzarini  
Construction Co.**  
38 Post Office Road  
Enfield CT 06082

**(860) 745-5683**  
Fax: (860) 745-9024

[info@spazzarini.com](mailto:info@spazzarini.com)

[Employee Login](#)



General Contracting, Road Construction & Site Preparation

SPAZZARINI Construction

[Company](#)

[Services](#)

[Resources](#)

[Projects](#)

[Contact](#)



Roads & Bridges

[Home](#) • [History](#) • [Credentials](#) • [Affiliations](#) • [Safety](#) • [Employment](#) • [Brochure](#)

## Welcome

In operation since the 1920's, Spazzarini Construction Company, Inc. is one of the premier site contractors in the Connecticut area. We have built our reputation for customer satisfaction by delivering quality construction on time and within budget.

[View, print, or download our brochure!](#)

Specializing in heavy construction services, we provide services to both the public and private sectors including highway roadwork and full site construction ranging from commercial shopping malls to residential housing developments.

### Our Services

- [General Contracting](#)
- [Demolition Contracting](#)
- [Road & Bridge Work](#)
- [Highway Construction](#)
- [Site Preparation](#)
- [Grading & Paving](#)
- [Commercial Buildings](#)
- [Residential Housing Complexes](#)
- [Public & Private Projects](#)
- [Snow Removal](#)

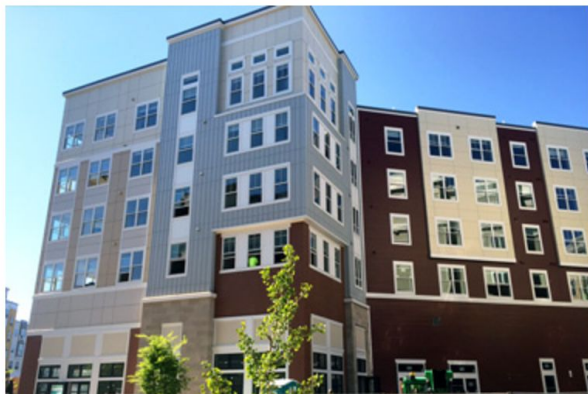


## FEATURED PROJECT: COLLEGE & CROWN: A CENTERPLACE

One of the premier residential developments in downtown New Haven, located at the nexus of the area's primary business district, Yale University, and New Haven's major retail corridor. College & Crown includes 160 luxury apartments ranging from studios to two-bedroom units

[LEARN MORE](#)





Founded in 2008, **Centerplan Construction** quickly emerged as a top firm in the region, and was ranked by “Inc.” magazine as the 100th fastest growing privately held companies, and 4th fastest growing privately held construction companies in the United States from 2009 to 2012.

Centerplan Construction provides a full range of services including pre-construction, construction management, cost estimating, and general contracting. With a healthy pipeline of future projects, its portfolio is rapidly expanding, and crosses a wide spectrum of projects including urban mixed use, multi-and-single family residential, commercial retail, industrial, medical and education facilities.



1 Ohio Avenue  
Norwich CT 06360  
Voice: (860) 823-1780  
Fax: (860) 885-1421  
E-Mail: [Contact Form](#)

[Home](#)

[About Nutmeg](#)

[Our Services](#)

[Project Galleries](#)

[In The News](#)

[Plan Room](#)

[Contact](#)

## Plan Room

Subcontractors and vendors that currently have access to our FTP site click below.

[Plan Room Login](#)

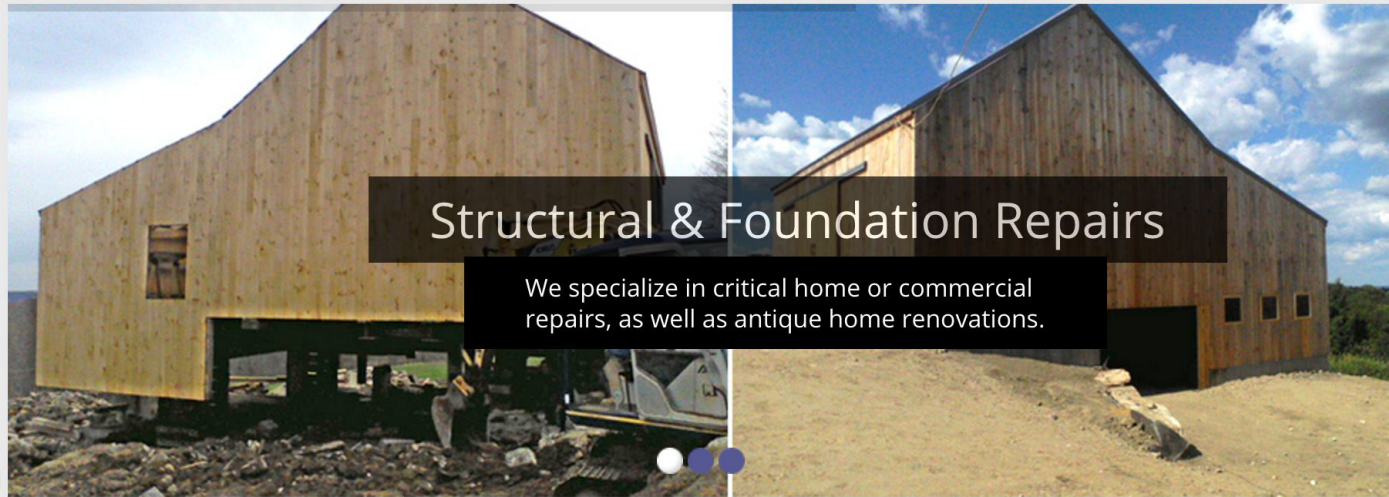
Don't have an account? [Fill out our Sub Contractor's Pre Qualification Form](#)



Main Entrance 1st Floor







## Foundation Repair Ridgefield & Westport, CT

JC Merritt • Your Honest Contractor • No Hassles • No Gimmicks

JC Merritt, Inc. is a knowledgeable company that specializes in structural repairs and foundation

✓ *Shoreline Restoration*



## Contact JC Merritt, Inc.

*Serving Fairfield & Litchfield Counties*



We would love to hear from you. Contact us with any questions or inquiries about our services, about a project you have in mind or might need help with. We are also available for **24/7 EMERGENCIES**.



JC Merritt, Inc.

279 Litchfield Road  
New Milford, CT 06776

Serving Fairfield & Litchfield Counties



**860.355.8238**

### SERVICES

- [Structural Repair](#)
- [Home Remodeling](#)
- [Shoreline Restoration](#)
- [Additions](#)



# Kapura

*General Contractors*



**Call Us Today**  
**860-747-2100**

[Home](#) | [About Us](#) | [Services](#) | [Pictures](#) | [Contact Us](#)



**INSURANCE RESTORATION & RECONSTRUCTION • DEMO & EXCAVATION • DAMAGE MITIGATION • CONSULTING SERVICES • CHURCH & HISTORICAL RESTORATION**

Kapura General Contractors is a comprehensive construction and fire damage restoration company with 35 years of full service general contracting & quality construction experience. Bill Kapura, owner and CEO, plays an active role in the day-to-day operations of the corporation. Kapura General Contractors employs a full staff, including estimators, project managers, and related tradesmen. Our professional team works diligently with clients to ensure that their projects are managed with the utmost care. We look forward to hearing from you.

**35 YEARS OF  
FULL SERVICE  
GENERAL  
CONTRACTING**



A Commercial Construction & Maintenance Company



• Commercial Construction



• Commercial Maintenance

**Van Horst Commercial Construction-  
dedicated to building satisfied clients nationwide.**

Van Horst Commercial Construction and Maintenance of East Hartford, CT makes pleasing clients its number one priority.

Whether you require new commercial construction, commercial building renovation, commercial office build-out, or on-call emergency building repair, you must be 100% satisfied with both the finished construction quality AND the commercial contractor experience provided by Van Horst.

• Enter





**Newfield**  
CONSTRUCTION

PROJECTS BIDDING

EXPERIENCE. WE BUILD ON IT.

[PROFILE](#) [SERVICES](#) [PROJECTS](#) [NEWSROOM](#) [CAREER OPPORTUNITIES](#) [CONTACT US](#) [HOME](#)



### ECSU STUDENT CENTER

Willimantic, CT

- 50,000 SF Addition and 30,000 SF Renovation
- New fitness center, food court, student lounge and game room, staged theater, ballroom

» [Learn more](#)

» [See similar projects](#)







**203.375.1383**

300 SPERRY AVENUE  
STRATFORD, CT 06615



Paving The Way Since 1957

[ABOUT US](#) [FEATURED PROJECTS](#) [OUR ENVIRONMENT](#) [SAFETY](#) [DIRECTIONS](#) [CONTACT](#)



PREV



NEXT

**Burns Construction Company**, founded in 1957, has been providing construction services with a long history of services of various communities. From paving driveways to major highway contracts, our crews are fully equipped to handle any sized project. We also own and operate an aggregate and asphalt recycling facility, enabling us to better serve our clients.

**BURNS COMPANY HISTORY**

CONSTRUCTION SERVICES



RESIDENTIAL SERVICES



SAND & GRAVEL

