



Airframe configuration screen

QGroundControl

January 2016 | vs 1.1

Document history

Version	Date	Change description
1.0	12/21/2015	Proposing some changes on airframe setup screen to guarantee the consistency between PX4 and APM configuration. Adding the possibility to undo any parameter selection on APM.
1.1	01/11/2016	Adjusting the airframe setup screen for PX4.

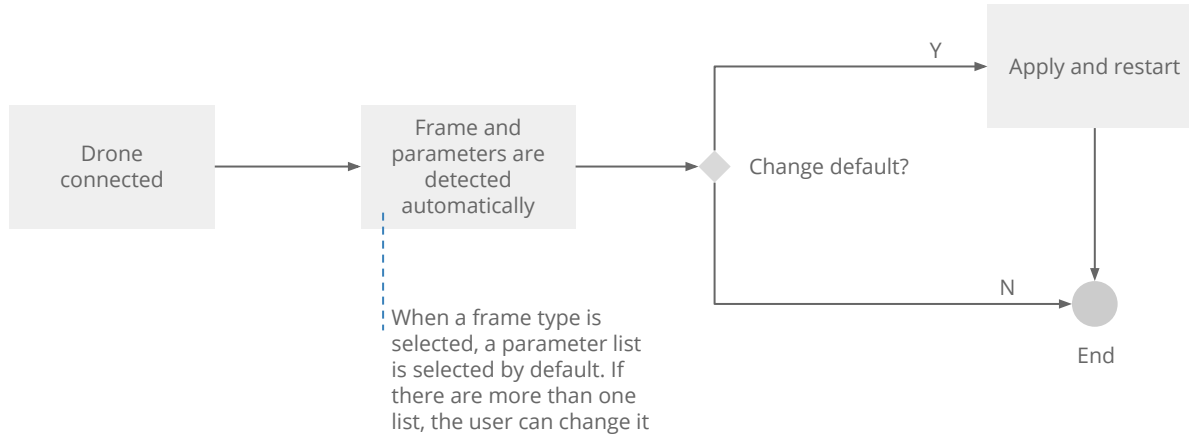
Table of contents

Airframe configuration for PX4	4
Flow	5
Current UI	6
Suggested adjustments	7
Airframe configuration for APM	10
Flow	11
Current UI	12
Suggested adjustments	14



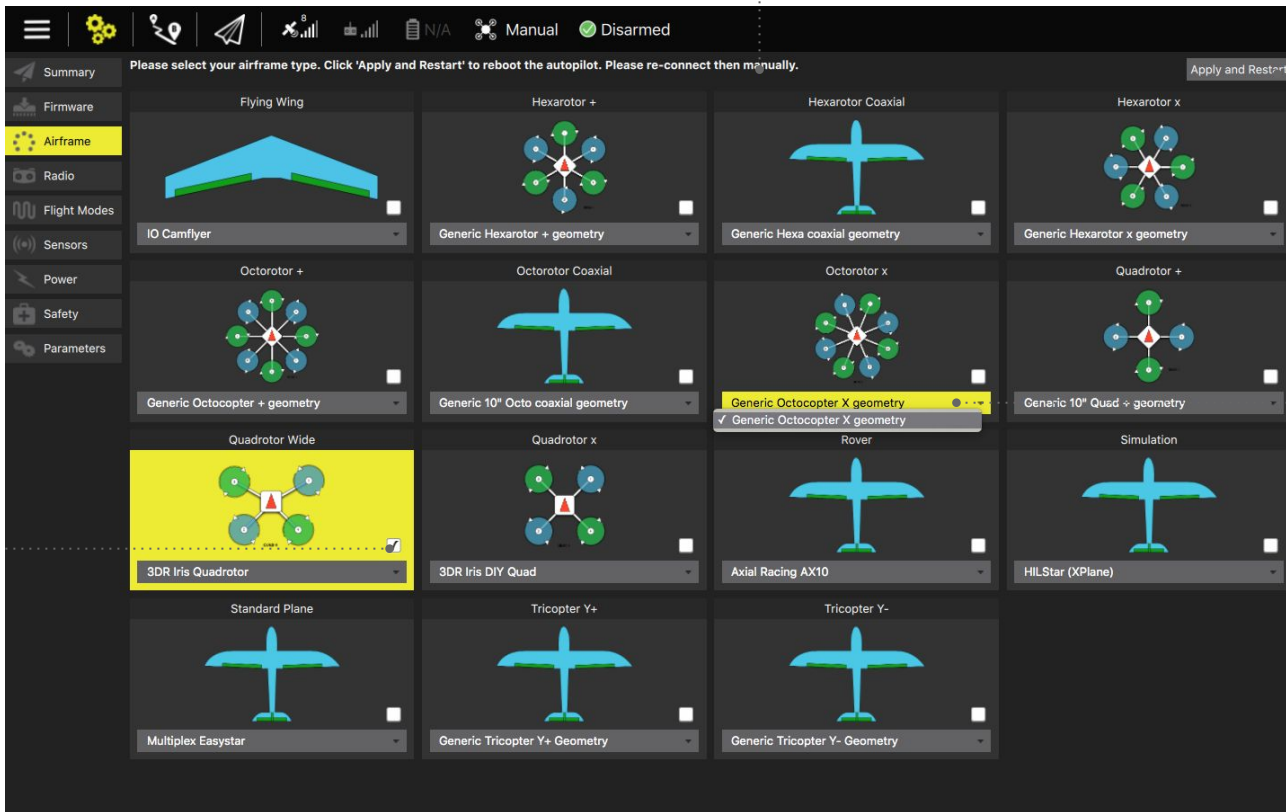
Airframe configuration for PX4

Flow



Current UI

The instructions should be more visible



The button's position doesn't show the action is mandatory

For items with only one option, it isn't necessary to show the dropdown

Because of the entire element is selectable, the check box is not necessary

Suggested adjustments

Give a screen title is important to positioning the user on interface. It's clearer than just the item selected on side menu, indeed it's complementary.

Once the drone is identified, this information can be displayed and an explanation about what could be done on the screen comes next

Airframe

You've connected a **3DR Iris DIY Quad**. If you'd like to change this configuration, please select the desired frame type below then click on "Apply and restart".

The screenshot shows a configuration screen with a header 'Airframe' and a sub-header 'Hexarotor +' above a grid of options. The 'Quadrotor x' option is selected and highlighted with a dark border. Below the 'Hexarotor +' header, there is a 'Generic Hexarotor + geometry' option with a red dot. Below the 'Quadrotor x' header, there is a '3DR Iris DIY Quad' option with a dropdown arrow. The grid consists of six placeholder boxes arranged in two rows and three columns.

Tap anywhere to select the frame type

Differentiate visually the selected drone

The dropdown is available only when there are options to be chosen, otherwise just show the name of parameters list

Airframe configuration for PX4


Suggested adjustments

Airframe

Clicking "Apply & restart" will save the changes you have made to your airframe configuration. Your vehicle will also be rebooted in order to complete the process.


Apply & restart

Hexarotor +



Generic Hexarotor + geometry

Quadrotor x



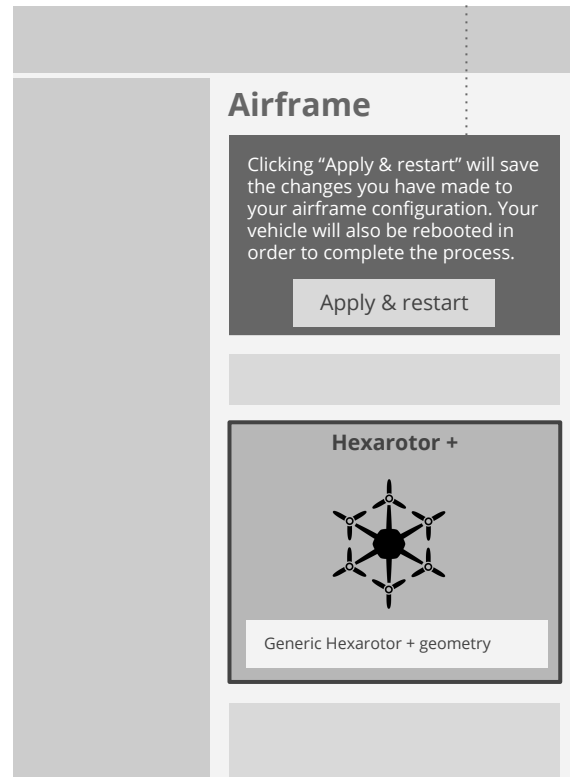
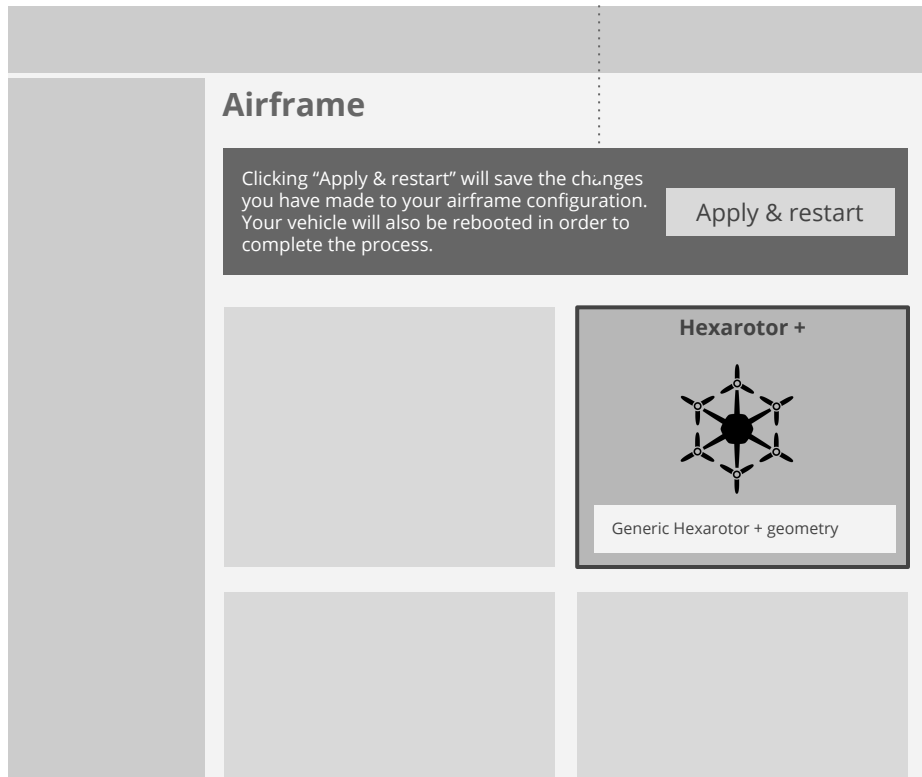
3DR Iris DIY Quad ▼

When a different frame type is selected, the button "Apply & restart" appears. The user should tap here to change the configuration

Only after the confirmation the configuration is sent to the drone

Airframe configuration for PX4

Suggested adjustments

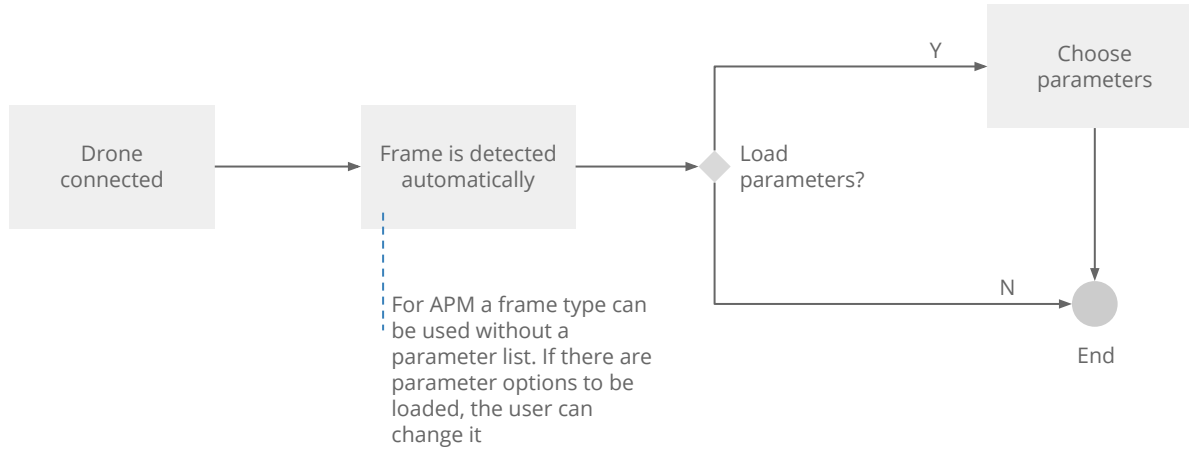


The text should keep the proportionality of font size on smaller screens.



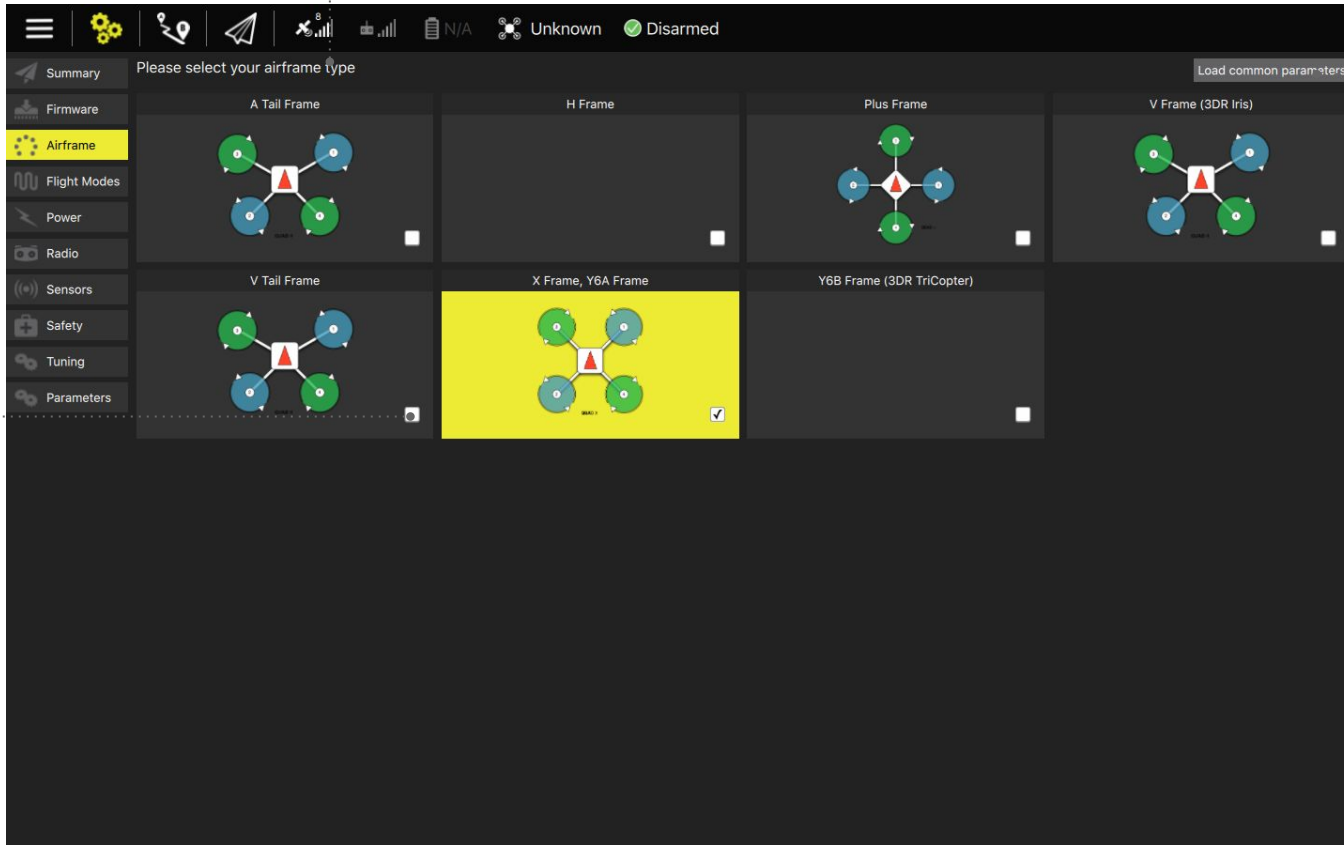
Airframe configuration for APM

Flow



Current UI

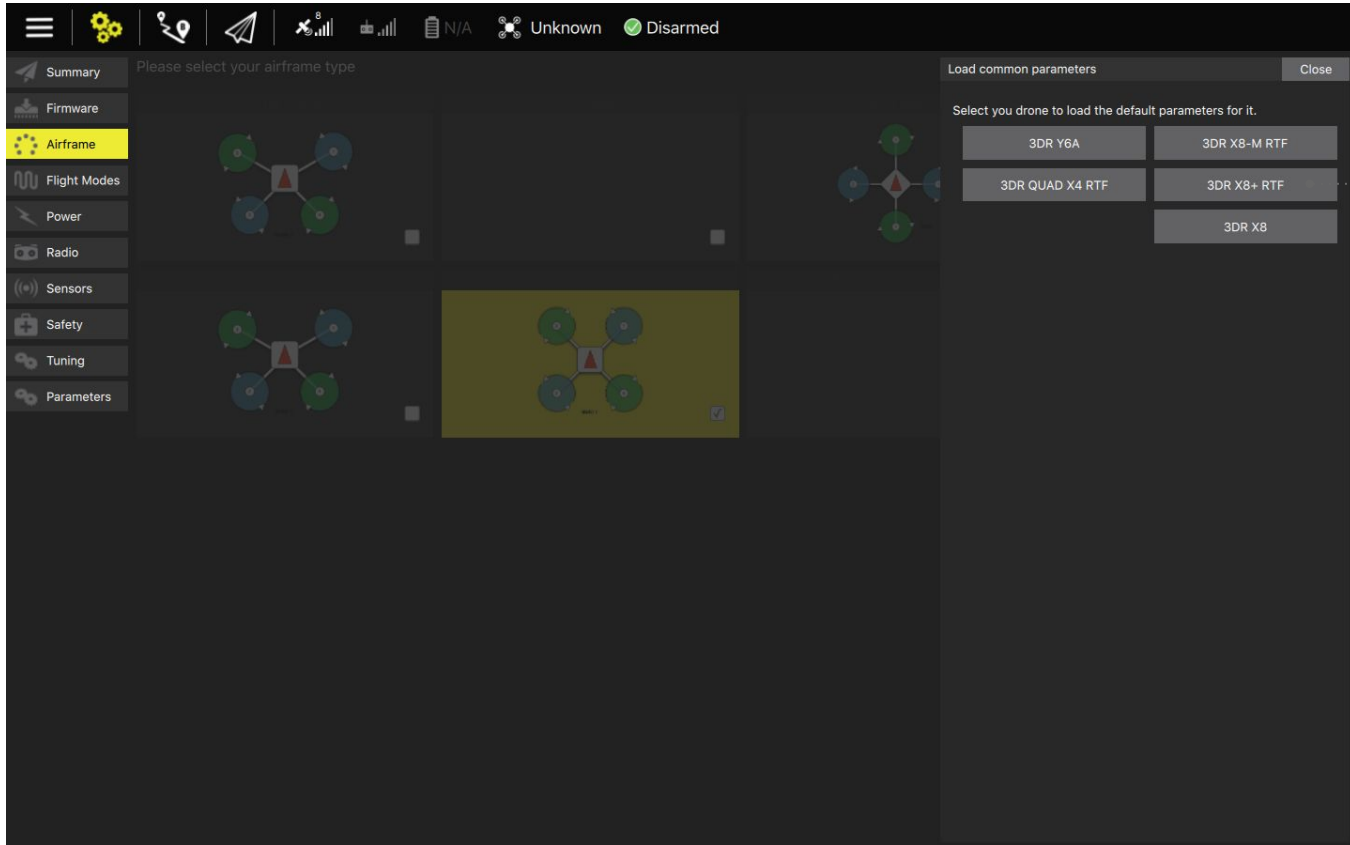
The instructions should be more visible



It is not clear this button is about the airframe selected, because of its position

Because of the entire element is selectable, the check box is not necessary

Airframe configuration for APM Current UI

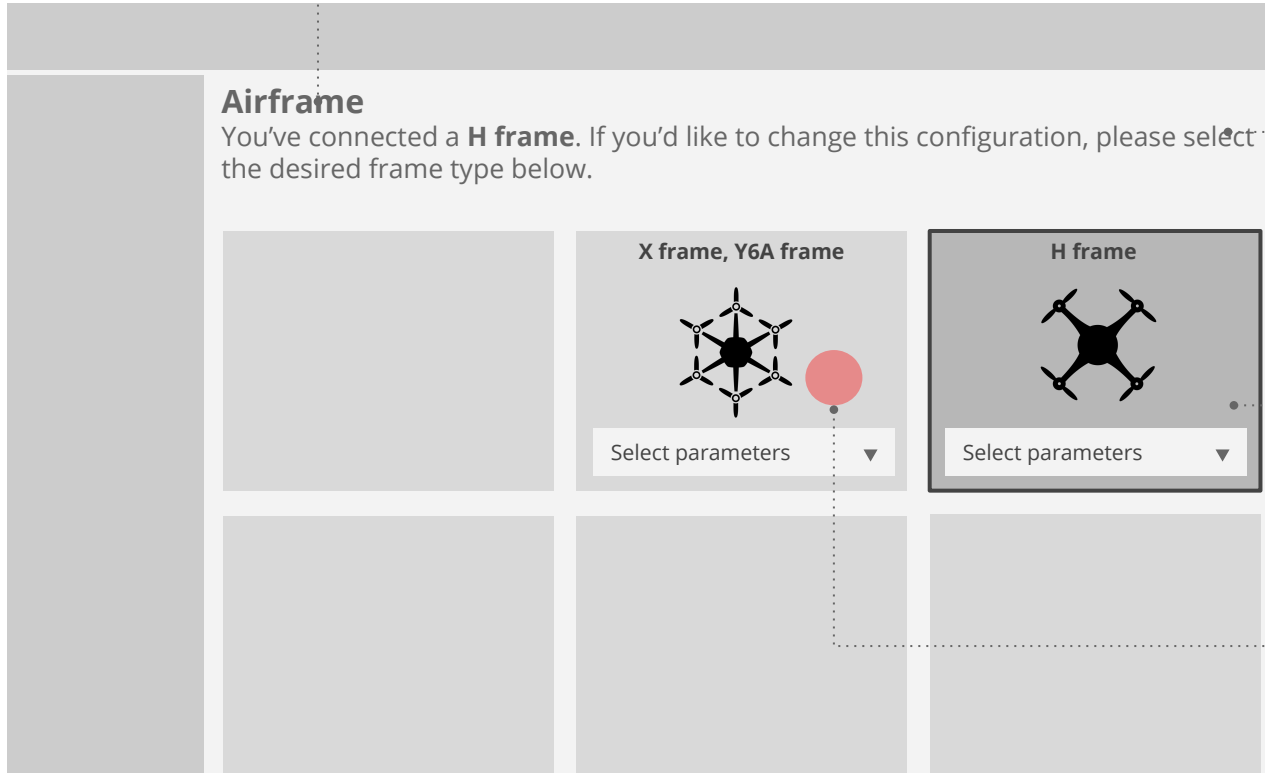


There isn't user feedback about which model was chosen

It's inconsistent with PX4 UI

Airframe configuration for APM
Suggested adjustments

Give a screen title is important to positioning the user on interface. It's clearer than just the item selected on side menu, indeed it's complementary.



Once the frame is identified, this information can be displayed and an explanation about what could be done on the screen comes next

Differentiate visually the selected drone

Tap anywhere to select the frame type

Airframe configuration for APM

Suggested adjustments

Airframe
You've connected a **H frame**. If you'd like to change this configuration, please select the desired frame type below.

X frame, Y6A frame

H frame

Default state: Select parameters ▼

Mouse over: Start over the selected option

- Select parameters
- 3DR Y6A
- 3DR QUAD X4 RTF
- 3DR X8-M RTF
- 3DR X8+ RTF
- 3DR X8

State after selection: 3DR X8-M RTF ▼

• Select parameters ▼

Select parameters

- 3DR Y6A
- 3DR QUAD X4 RTF
- 3DR X8-M RTF
- 3DR X8+ RTF
- 3DR X8