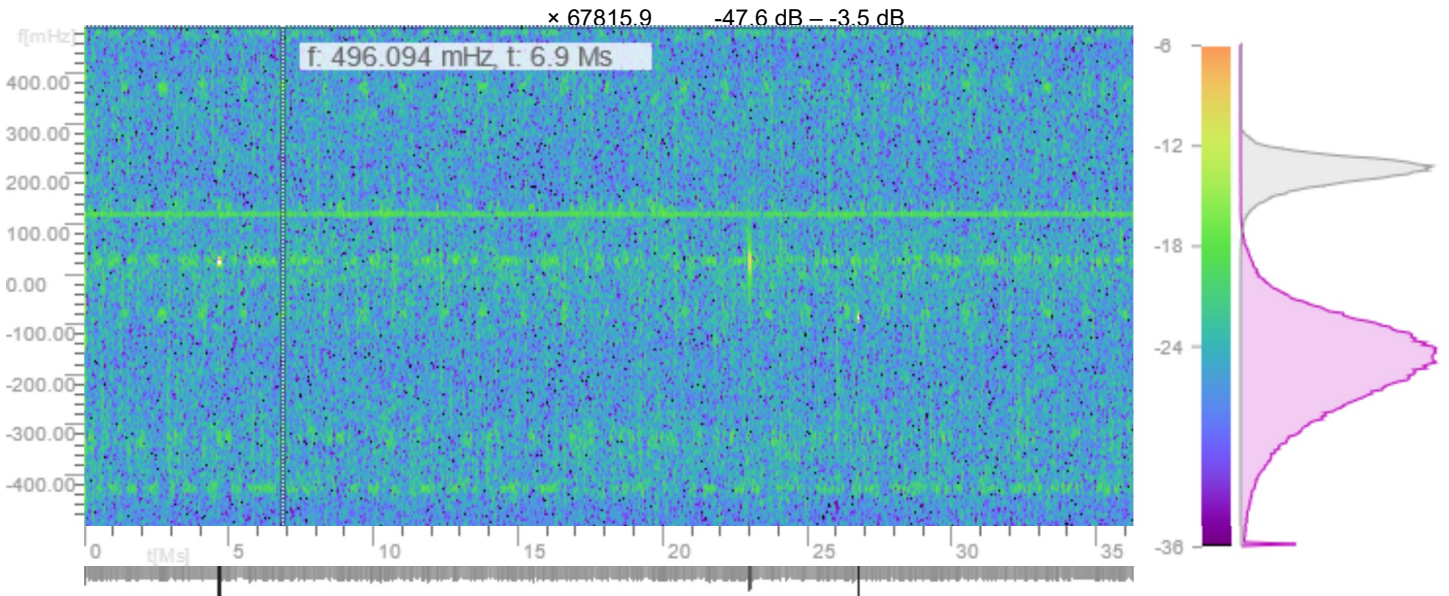


I/Q SPECTROGRAM

Dark Theme TRIQ.ORG

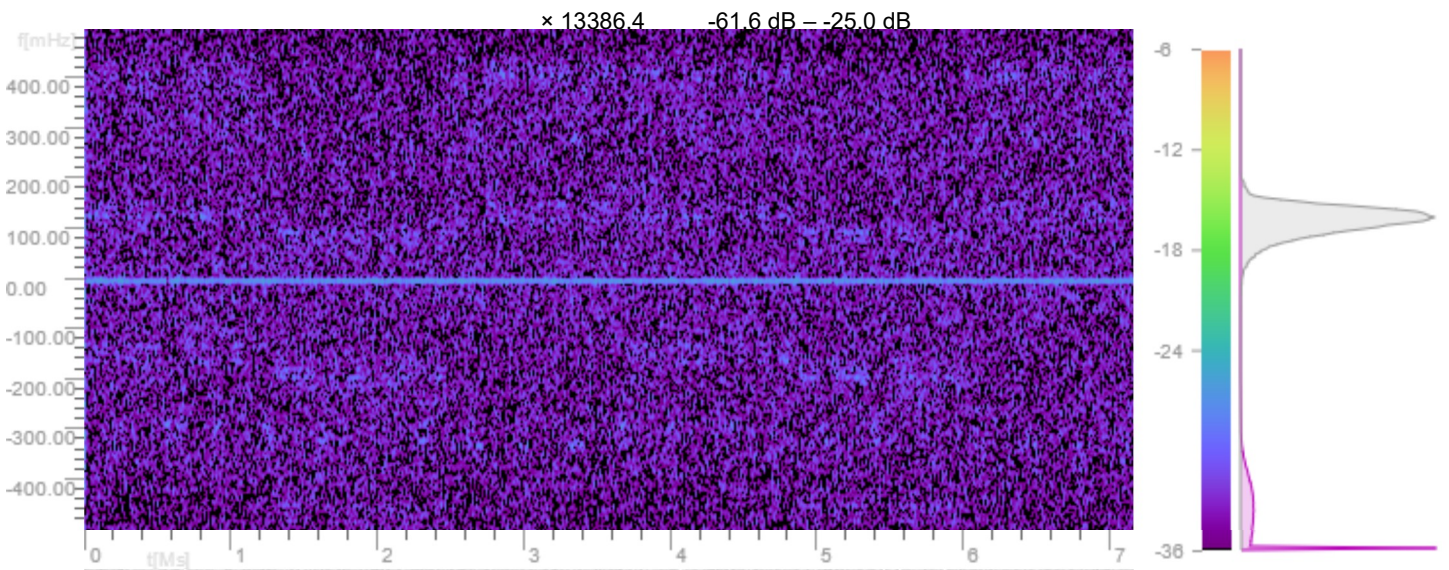
Display size FFT window... FFT windowing function Overall gai... Gain range (... Color
☰ ⓘ 🔍 ↕ 🔍 512... ▾ N=5... ▾ Blackman-H... ▾ +6 ... ▾ +30 ... ▾ Cub

INFO grab_1615355959.cu8 n/a 120848384 bytes 2021-03-10T06:00:19.043Z CU8 60424192 S



Display size FFT window... FFT windowing function Overall gai... Gain range (... Color
☰ ⓘ 🔍 ↕ 🔍 512... ▾ N=5... ▾ Blackman-H... ▾ +6 ... ▾ +30 ... ▾ Cub

INFO grab_1615356102.cu8 n/a 23855104 bytes 2021-03-10T06:02:42.262Z CU8 11927552 S



I/Q SPECTROGRAM

 Dark Theme TRIQ.ORG

Choose a file or drag it here.

.cu4 .cs4 .cu8 (.data .complex16u) .cs8
(.complex16s) .cu12 .cs12 .cu16 .cs16 .cu32
.cs32 .cu64 .cs64 .cf32 (.cfile .complex) .cf64
(also audio containing I/Q data if supported
by the browser: .wav .bwf .webm .ogg .opus
.flac .mp4 .m4a .aac .mp3)