

ISO

INTERNATIONAL ORGANIZATION FOR STANDARDIZATION

ISO RECOMMENDATION R 1173

ASSEMBLY TOOLS FOR BOLTS AND SCREWS

HEXAGON DRIVE ENDS FOR POWER TOOLS

1st EDITION

January 1970

COPYRIGHT RESERVED

The copyright of ISO Recommendations and ISO Standards belongs to ISO Member Bodies. Reproduction of these documents, in any country, may be authorized therefore only by the national standards organization of that country, being a member of ISO.

For each individual country the only valid standard is the national standard of that country.

Printed in Switzerland

Also issued in French and Russian. Copies to be obtained through the national standards organizations.

BRIEF HISTORY

The ISO Recommendation R 1173, *Assembly tools for bolts and screws – Hexagon drive ends for power tools*, was drawn up by Technical Committee ISO/TC 29, *Small tools*, the Secretariat of which is held by the Association Française de Normalisation (AFNOR).

Work on this question led to the adoption of a Draft ISO Recommendation.

In October 1968, this Draft ISO Recommendation (No. 1705) was circulated to all the ISO Member Bodies for enquiry. It was approved, subject to a few modifications of an editorial nature, by the following Member Bodies :

Australia	India	Switzerland
Belgium	Ireland	Thailand
Brazil	Israel	Turkey
Czechoslovakia	Italy	U.A.R.
France	Poland	United Kingdom
Germany	Portugal	U.S.S.R.
Greece	Spain	Yugoslavia
Hungary	Sweden	

No Member Body opposed the approval of the Draft.

This Draft ISO Recommendation was then submitted by correspondence to the ISO Council, which decided, in January 1970, to accept it as an ISO RECOMMENDATION.

iTeh STANDARD PREVIEW
(standards.iteh.ai)

ISO/R 1173:1970

<https://standards.iteh.ai/catalog/standards/sist/58b0ac55-8cd4-47d1-afda-1582de8cdee3/iso-r-1173-1970>

ASSEMBLY TOOLS FOR BOLTS AND SCREWS**HEXAGON DRIVE ENDS FOR POWER TOOLS****1. SCOPE**

This ISO Recommendation, relating to assembly tools for bolts and screws, deals with hexagon drive ends for power tools.

It includes two tables, the first showing the dimensions of male hexagons and the other the dimensions of female hexagons.

2. INTERCHANGEABILITY

Hexagon maximum and minimum dimensions have been selected so as to allow for interchangeability between metric and inch productions.

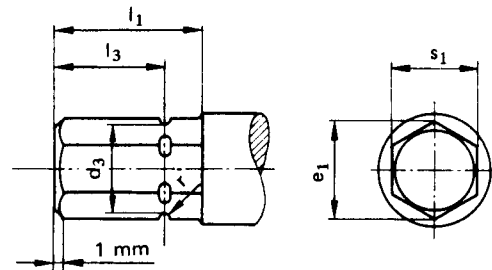
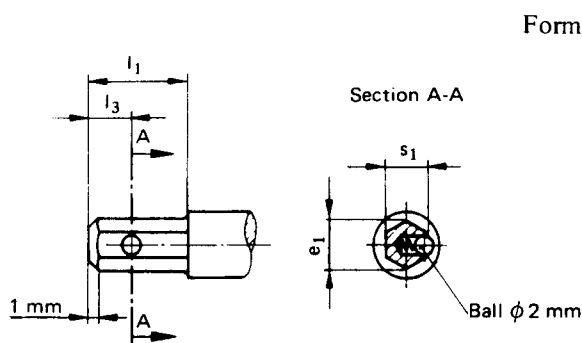
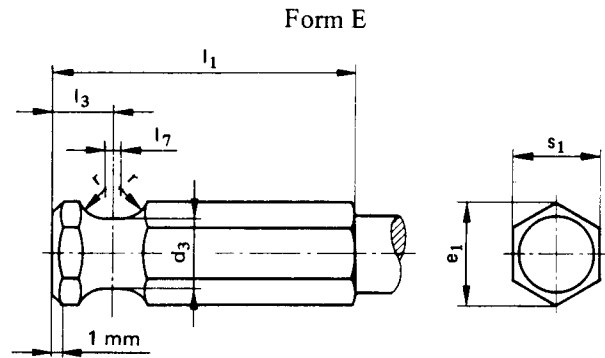
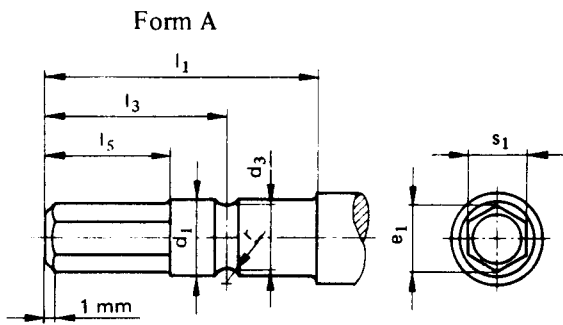
Deviations between maximum and minimum dimensions of s_1 and s_2 correspond to tolerances of grade 10*.

Sizes e have been calculated by using the formula $e = 1.13 s$.

* See ISO Recommendation R 286, *ISO system of limits and fits – Part 1 : General, tolerances and deviations*.

3. DIMENSIONS

3.1 Male hexagons



Nominal dimension 4

Nominal dimensions 6.3 and 8

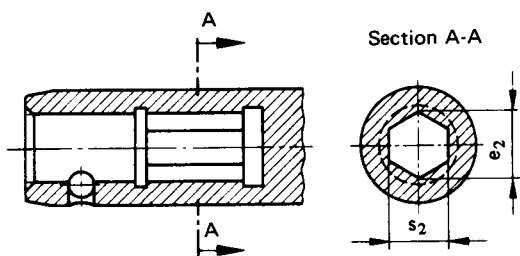
Dimensions in millimetres

Form	Nominal dimensions	s ₁		d ₁ h9	d ₃ h12	e ₁		l ₁ min.	l ₃	Tolerance ± 0.1	l ₅ ± 0.1	l ₇	r	Nominal dimensions in inches
		max.	min.			max.	min.							
A	3	3.000	2.960	3.6	3.0	3.39	3.34	19.5	11.9	± 0.11	7.5	—	1.0	—
	5.5	5.500	5.452	6.7	5.7	6.21	6.16	24.0	16.0	± 0.11	11.0	—	1.25	—
C	4	3.962	3.914	—	—	4.48	4.42	9.0	4.0	± 0.07	—	—	—	$\frac{5}{32}$
	6.3	6.350	6.292	—	6.7	7.18	7.11	11.0	8.2	± 0.09	—	—	0.3	$\frac{1}{4}$
	8	7.930	7.872	—	8.2	8.96	8.90	13.5	10.2	± 0.11	—	—	0.3	$\frac{5}{16}$
E	6.3	6.350	6.292	—	4.7	7.18	7.11	25.0	9.5	± 0.09	—	1.0	2.4	$\frac{1}{4}$
	(8)	7.930	7.872	—	6.3	8.96	8.90	27.0	5.4	± 0.07	—	1.2	2.4	$\frac{5}{16}$
	11.2	11.112	11.042	—	8.7	12.56	12.48	31.5	6.7	± 0.09	—	1.2	2.8	$\frac{7}{16}$
	16	15.875	15.805	—	13.5	17.94	17.86	44.0	8.7	± 0.09	—	1.6	4.0	$\frac{5}{8}$
	(20)	19.050	18.966	—	16.7	21.53	21.43	50.0	8.7	± 0.09	—	1.6	4.0	$\frac{3}{4}$

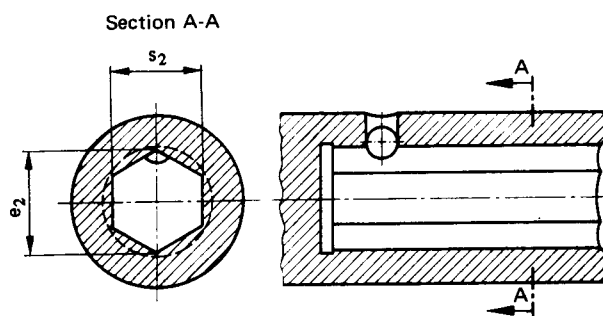
Dimensions placed between parentheses should be avoided as far as possible.

3.2 Female hexagons

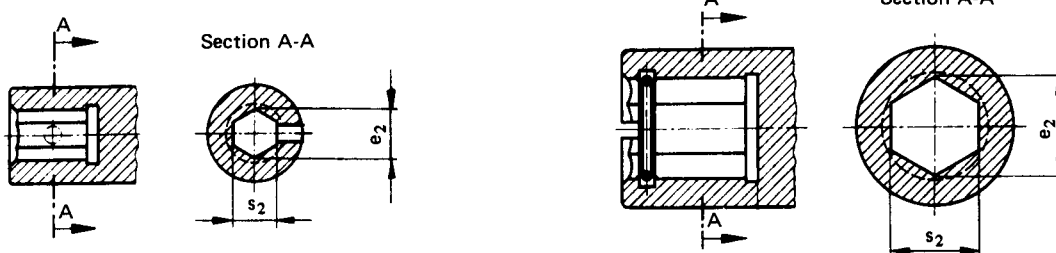
Form B



Form F



Form D



Nominal dimension 4

Nominal dimensions 6.3 and 8

Dimensions in millimetres

Form	Nominal dimensions	s_2		e_2	Nominal dimensions in inches
		max.	min.	min.	
B	3	3.060	3.020	3.41	—
	5.5	5.578	5.530	6.25	
D	4	4.040	3.992	4.51	$\frac{5}{32}$
	6.3	6.448	6.390	7.22	$\frac{1}{4}$
	8	8.028	7.970	9.00	$\frac{5}{16}$
F	6.3	6.448	6.390	7.22	$\frac{1}{4}$
	(8)	8.028	7.970	9.00	$\frac{5}{16}$
	11.2	11.232	11.162	12.61	$\frac{7}{16}$
	16	15.995	15.925	18.00	$\frac{5}{8}$
	(20)	19.199	19.115	21.60	$\frac{3}{4}$

Dimensions placed between parentheses should be avoided as far as possible.

Female hexagons should be produced by the manufacturer in such a way that they perfectly fit the male hexagons.