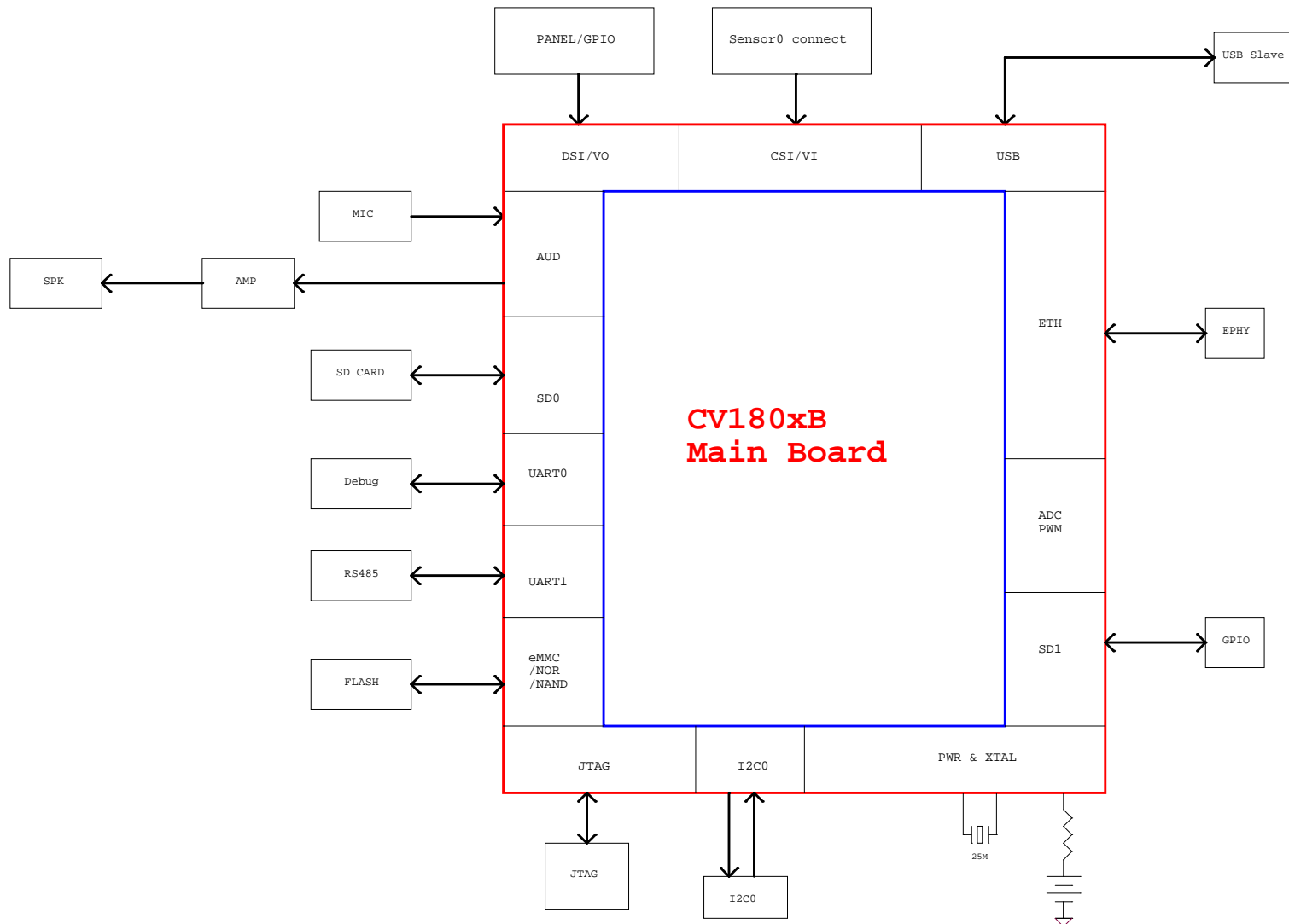
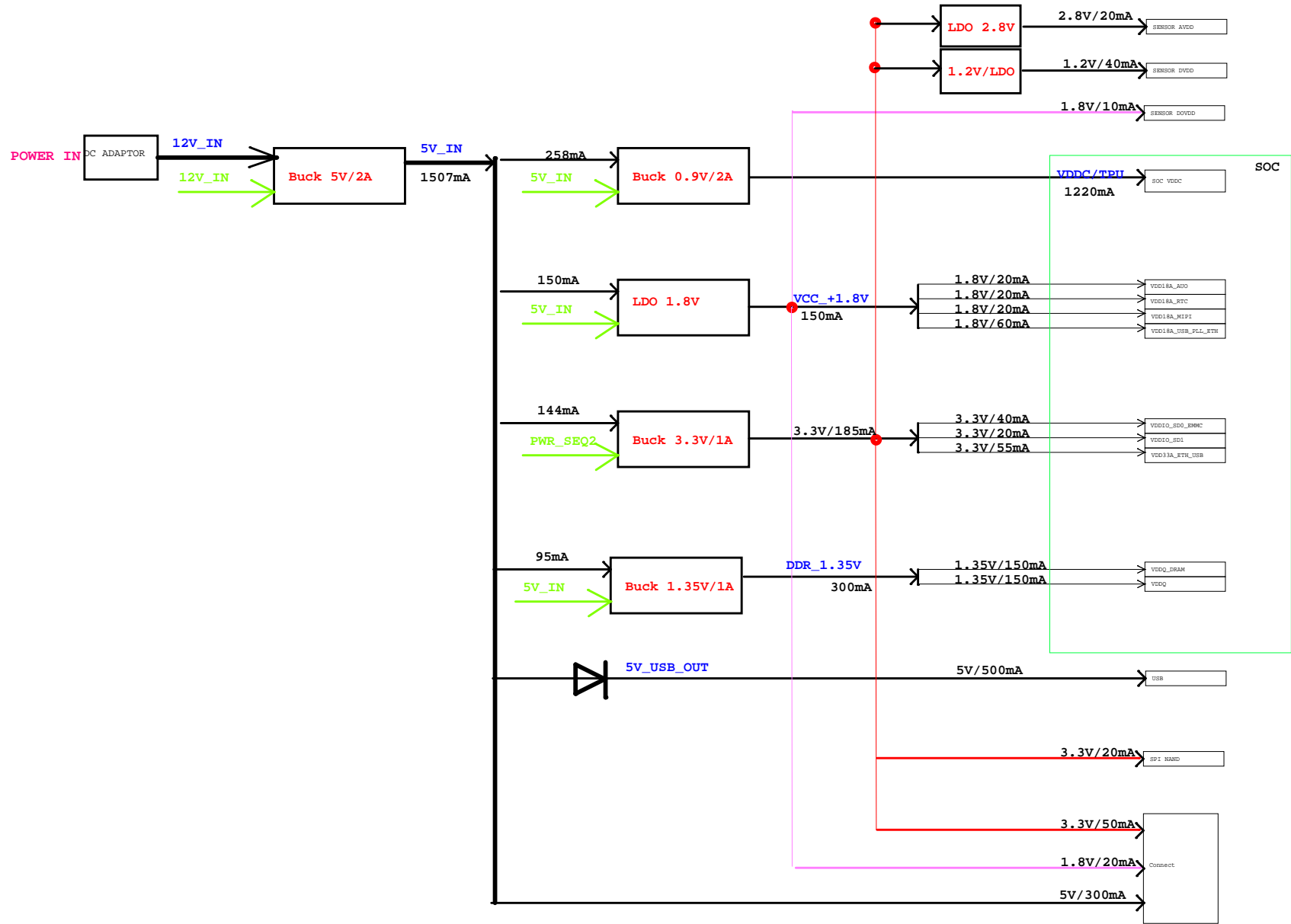
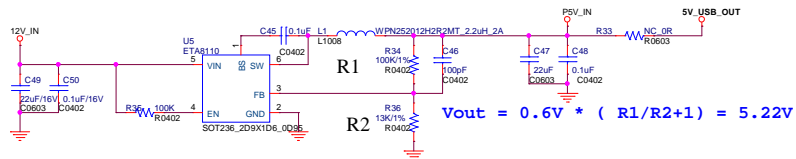


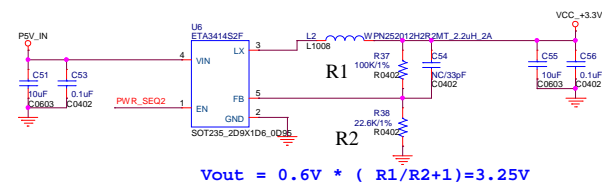
Block Diagram for CV180xB



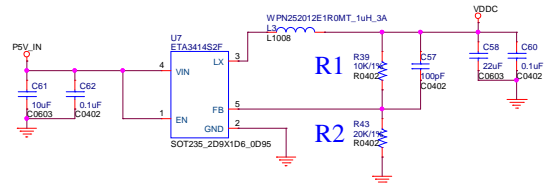




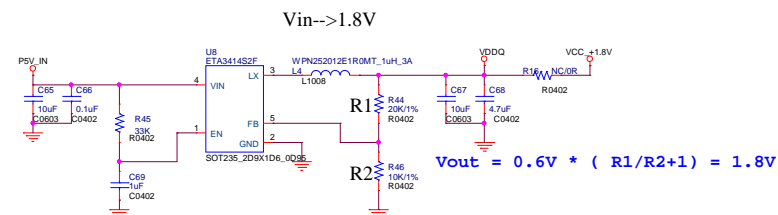
PWR_SEQ02



Note:
CR1811: DDR3L
Vout=1.35V
CV1810: DDR2L
Vout=1.8V

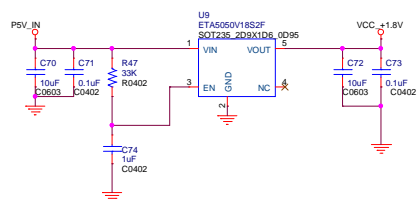


$R2 \cong 20k\Omega$ for stability consideration.

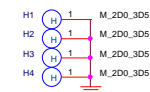


Note:
CR1811:
U9,C70,C71,R47,C74,C72,C73上件
R17 NC

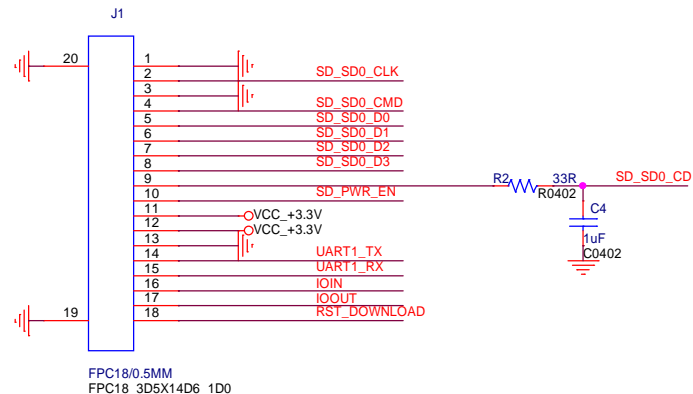
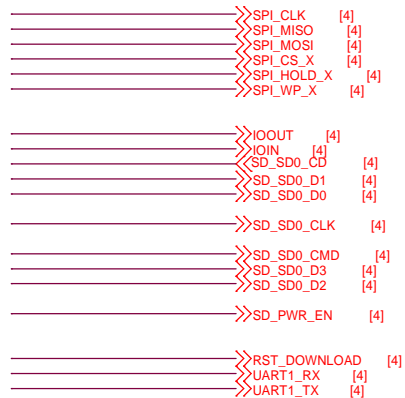
CR1810:
U9,C70,C71,R47,C74,C72,C73 NC
R17上件



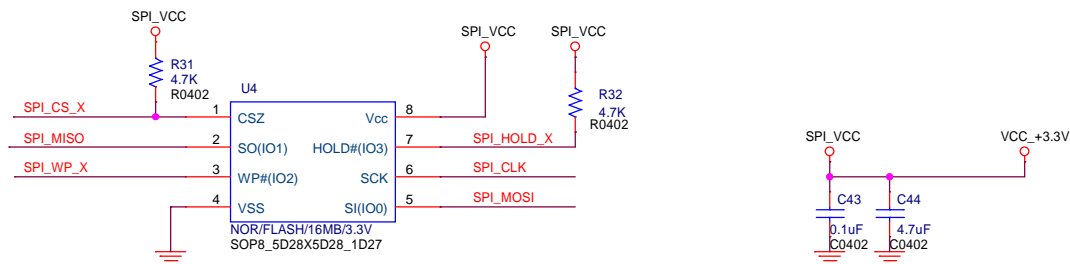
→PWR_SEQ02 [4]



NET



SPINOR

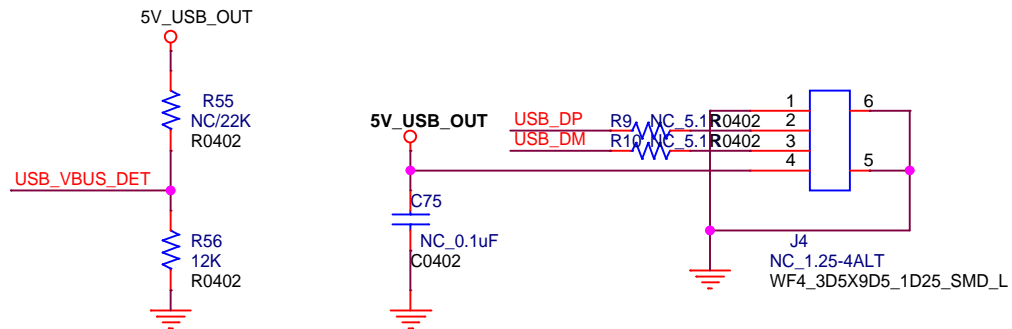


Title	01_Cover		
Size	Document Number	CV180xB_QFN68_SIP_DDR	Rev 1.0.0
Date:	Monday, September 26, 2022	Sheet 6	of 10

NET

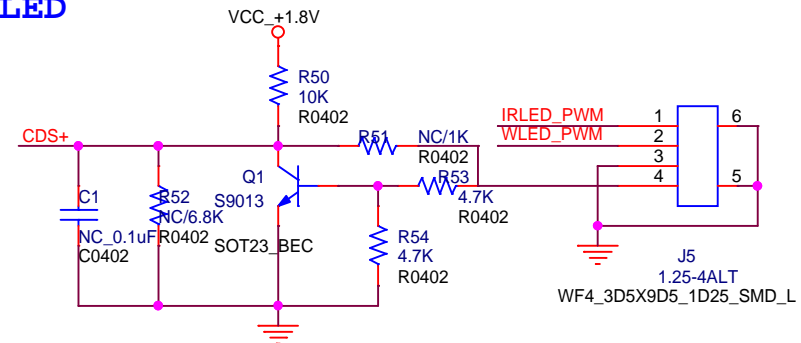


USB



VBUS_DET: (Host or device)
 LOW---- USB Host
 High---- USB Device

LED



Title

01_Cover

Size

Document Number

CV180xB_QFN68_SIP_DDR

Rev
1.0.0

Date:

Monday, September 26, 2022

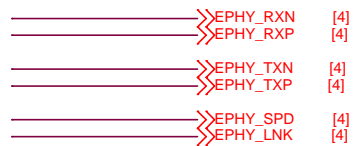
Sheet

7

of

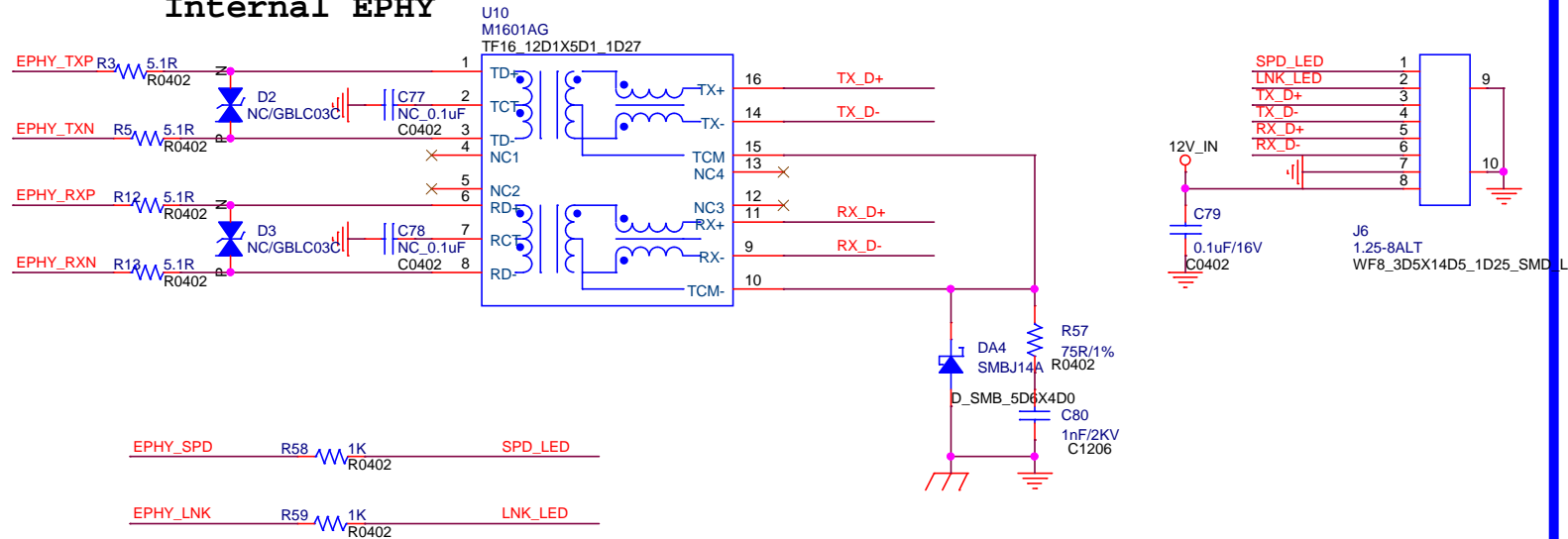
10

NET



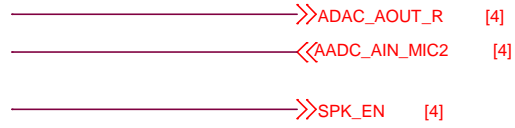
ETH

Internal EPHY

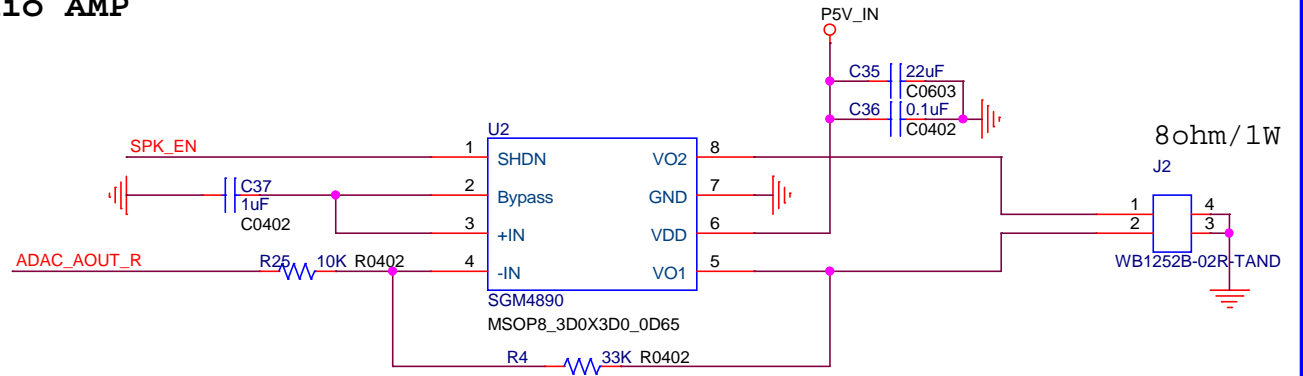


Title		
01_Cover		
Size	Document Number	Rev
	CV180xB_QFN68_SIP_DDR	1.0.0
Date:	Monday, September 26, 2022	Sheet 8 of 10

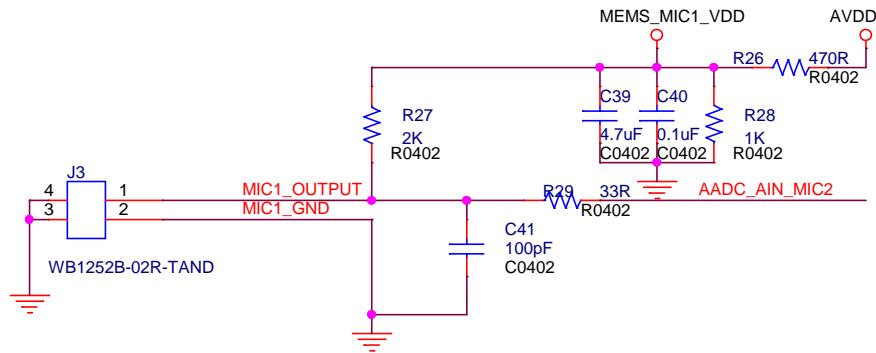
NET



Audio AMP



MIC



Title		
01_Cover		
Size	Document Number	Rev
	CV180xB_QFN68_SIP_DDR	1.0.0
Date:	Monday, September 26, 2022	Sheet 9 of 10

