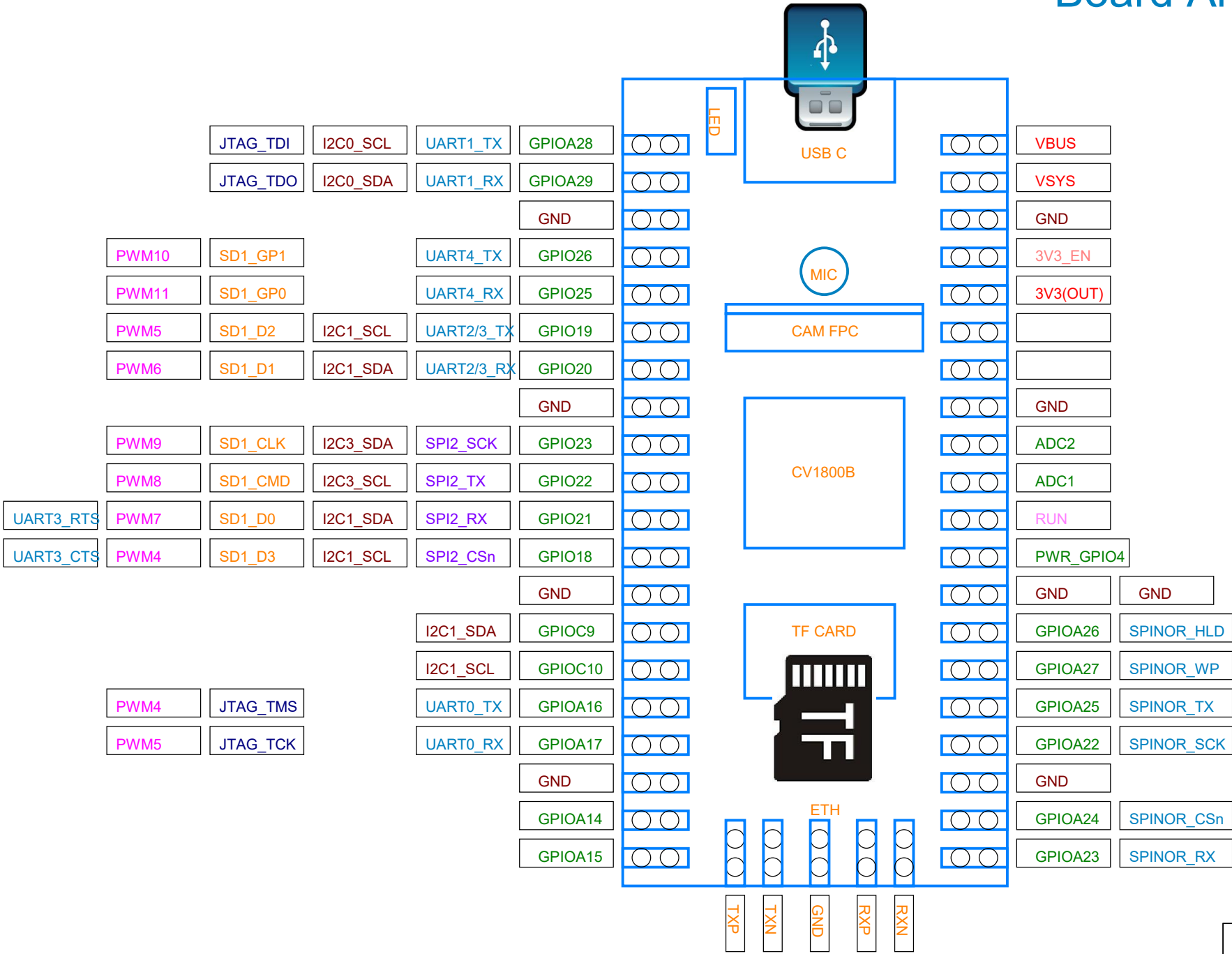
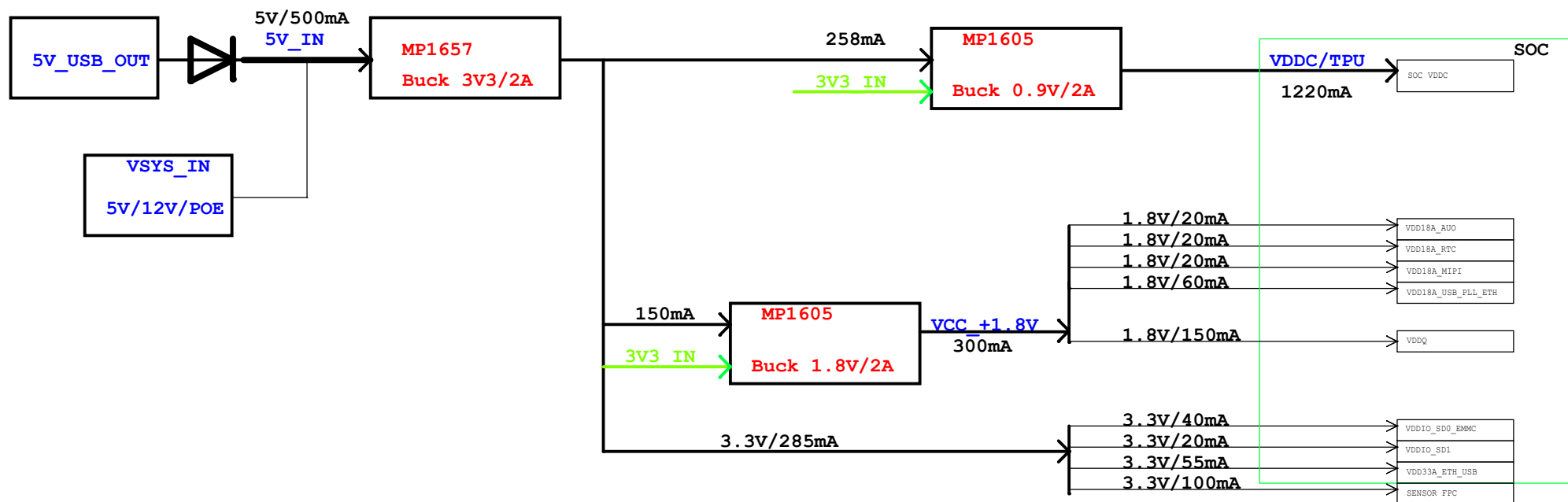


Board Architecture



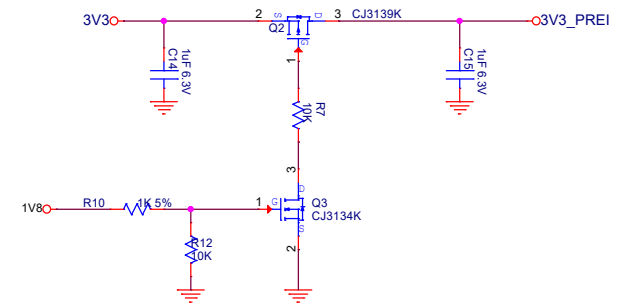
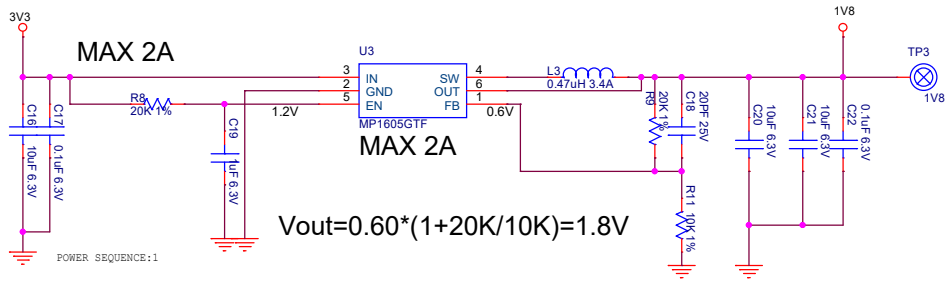
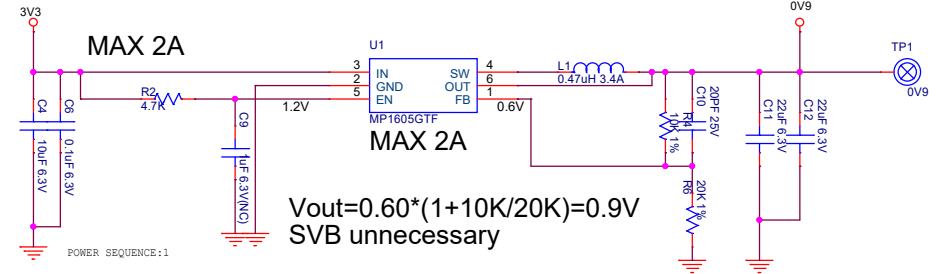
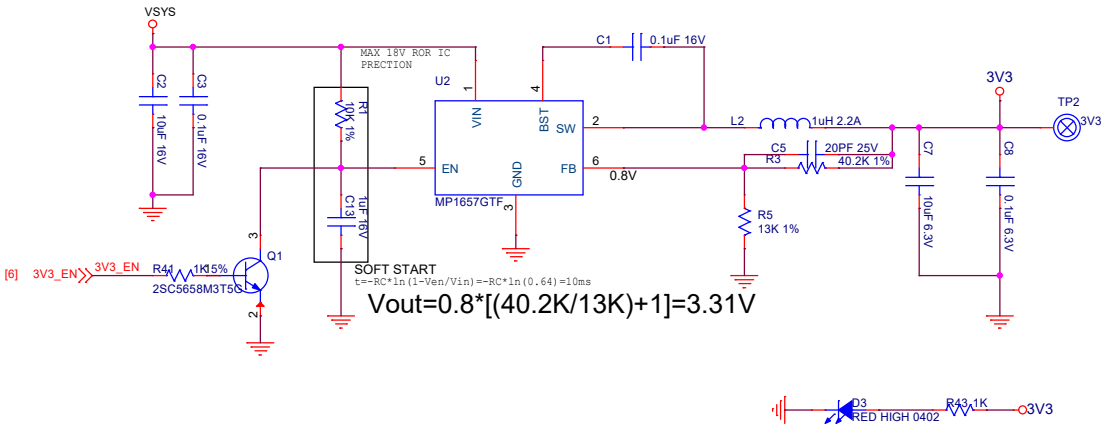
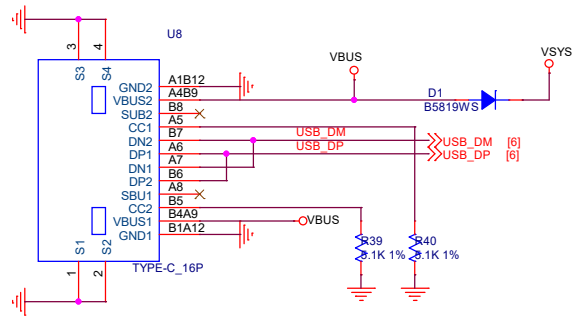
Power Tree



milky

Project: CV1800B			
File: 02 Power Tree			
Date:	Saturday, September 23, 2023	Rev:	1.2
Designed by:	<designer>	Sheet:	4 of 9

Power

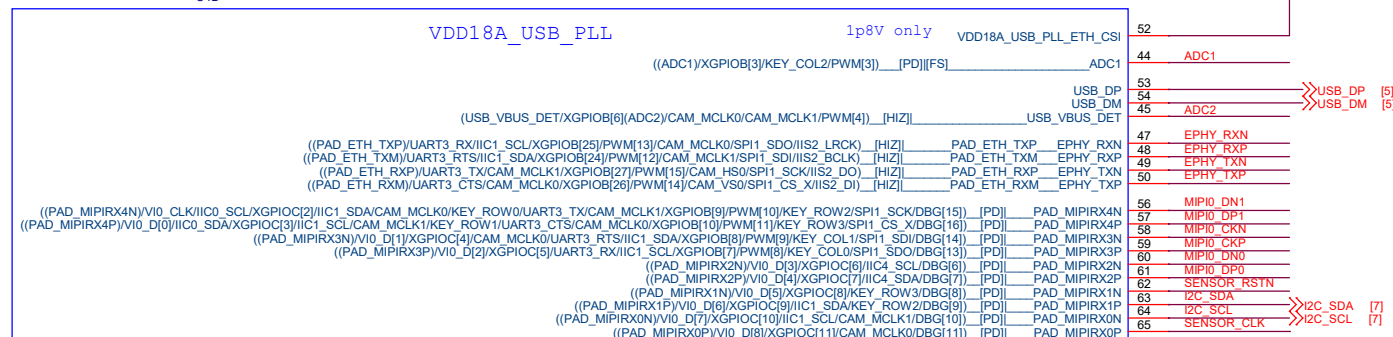


milkV

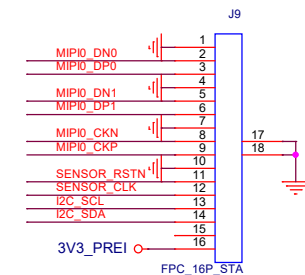
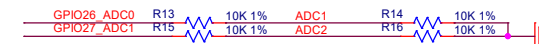
Project:	CV1800B		
File:	03 Power		
Date:	Saturday, September 23, 2023	Rev:	1.2
Designed by:	<designer>	Sheet:	5 of 9

USB&ETH&MIPI

U4B

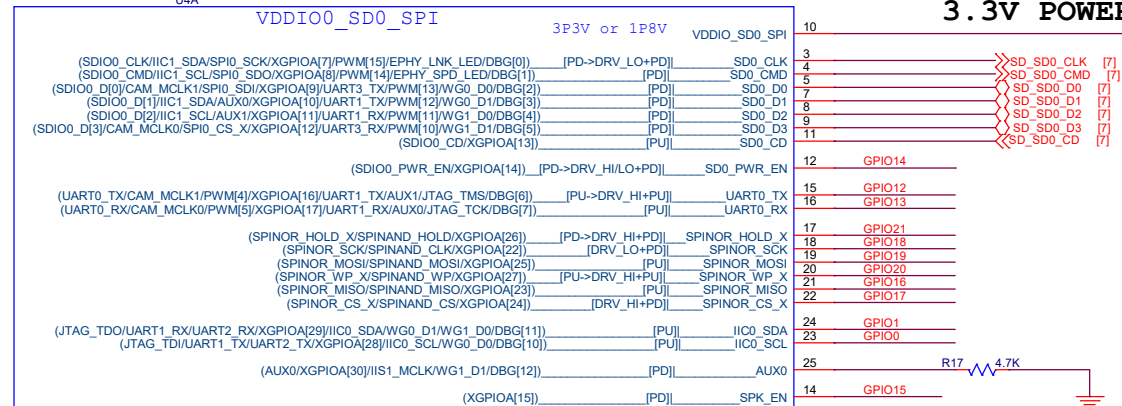


CV180xB_QFN68

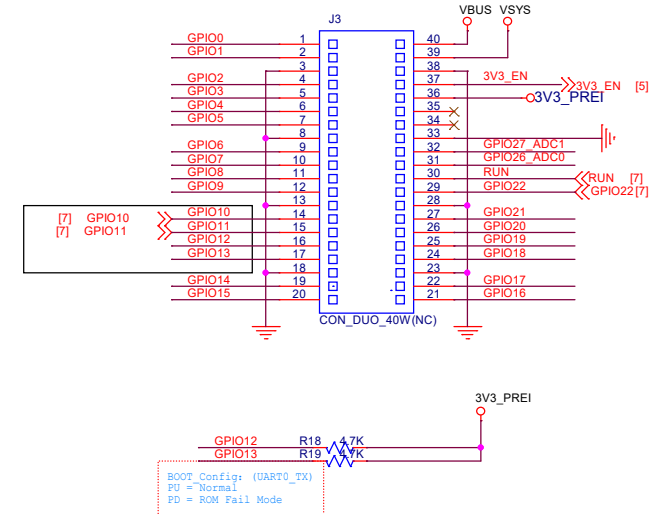


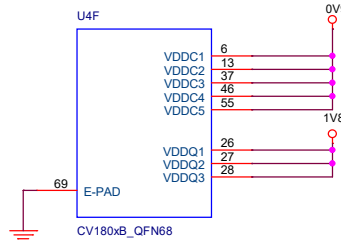
VDDIO_SD0_EMMC

U4A

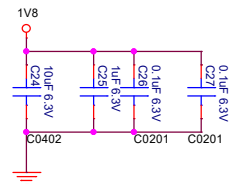


CV180xB_QFN68

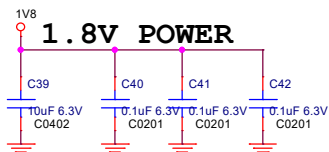
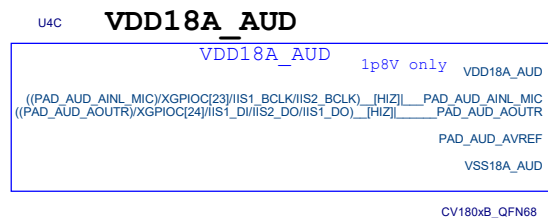
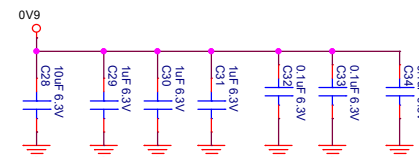




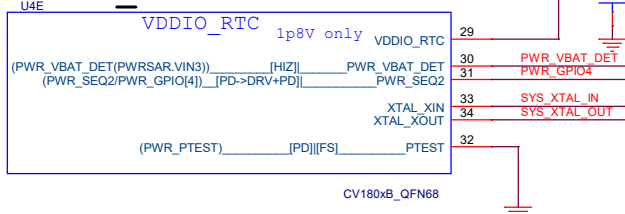
DDR2 POWER



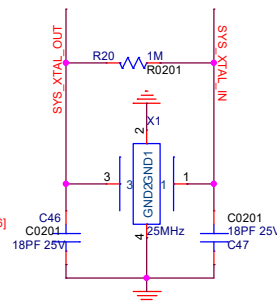
VDDC&TPU POWER



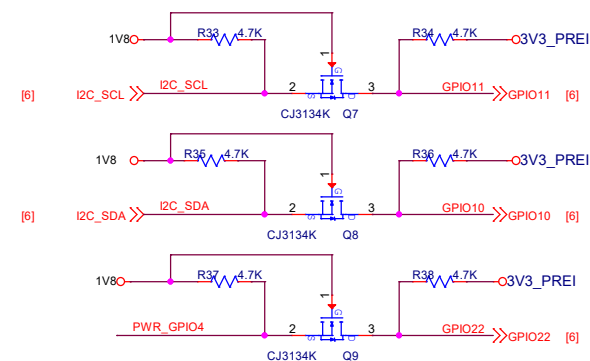
VDDIO_RTC



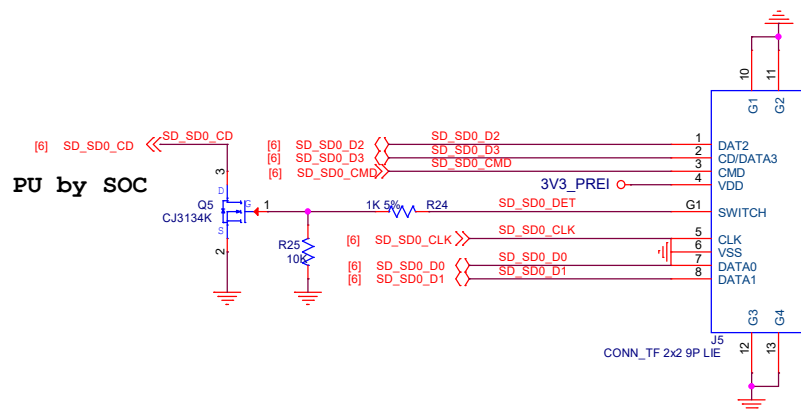
SYS XTAL



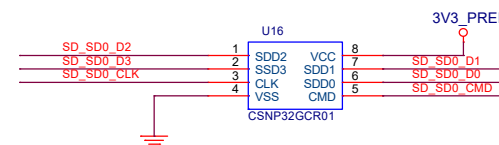
LEVEL SHIFT



TF_SOCKET



SD NAND



Project:	CV1800B		
File:	05 CV1800B PART2		
Date:	Saturday, September 23, 2023	Rev:	1.2
Designed by:	<designer>	Sheet:	7 of 9